

CERTIFICATE OF LOCATION OF GOVERNMENT CORNER

Lake Belt

East 1/4 Corner of Section 1, Township T101N, Range R32W, 5th P.M.

STATE OF MINNESOTA, County of MARTIN

At the corner location shown on the sketch:

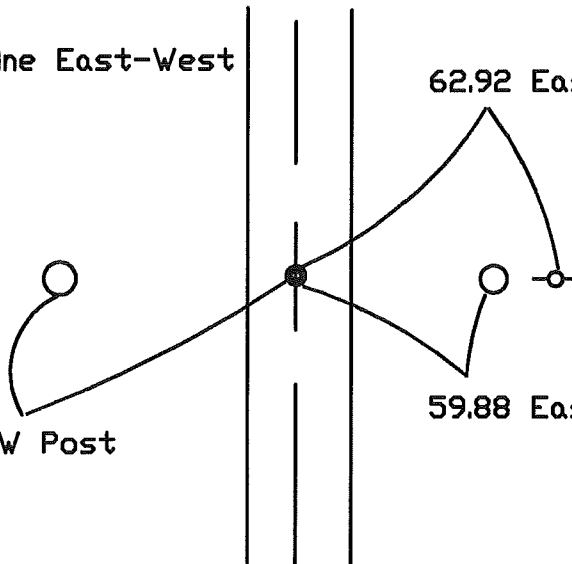
- On 7-13-99 found a 3/4" I.R. (6" Deep)
DATE
- left monument as found, lowered monument, removed monument (explain)
- On 7-13-99 Placed a 5/8" X 5" I.R. W/Alum. Cap over I.R. (Surface)
DATE

SKETCH OF REFERENCE TIES



1.4 South = P.P. line East-West

62.92 East = B.C. in P.P.



59.65 West = R/W Post

59.88 East = R/W Post

Statement of evidence relative to this corner location is on back of page.

I hereby certify that this document and the data contained herein was prepared by me or under my direct supervision.

SIGNATURE DATE

Registration No. _____

- Land Surveyor, Professional Engineer
- County Surveyor, County Engineer

OFFICE OF THE REGISTER OF DEEDS
 County of MARTIN

I hereby certify that this document was filed in the Reg. of Deeds office at

_____.M. on the

____ day of _____ A.D., 19____

Register of Deeds _____

By _____, Deputy

DOCUMENT NO. _____