

# CERTIFICATE OF LOCATION OF GOVERNMENT CORNER

SOUTHEAST Corner of Section 17, Township 102 N., Range 30 W., 5TH P.M.

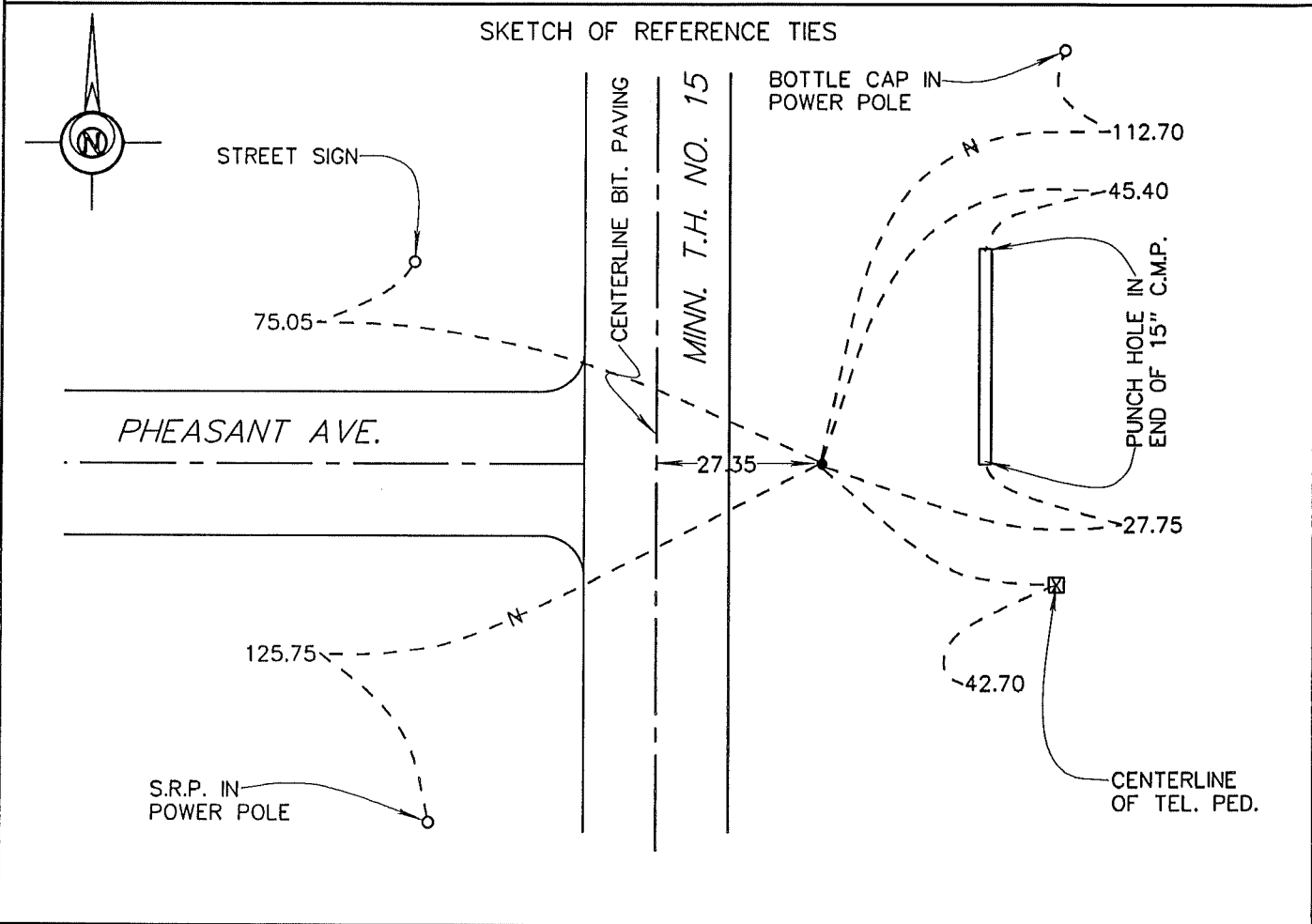
STATE OF MINNESOTA, County of MARTIN

At the corner location shown on the sketch:

On 8-23-95 found a 5/8" X 18" BOLT (8" DEEP).  
DATE

left monument as found,  lowered monument,  removed monument (explain)

On 8-23-95 placed a 5/8" X 24" IRON MONUMENT WITH ALUMINUM CAP (6" DEEP).  
DATE



Statement of evidence relative to this corner location is on back of page.

I hereby certify that this document and the data contained herein was prepared by me or under my direct supervision.

John Madson 5/14/96  
SIGNATURE DATE

Registration No. 13593

- Land Surveyor,  Professional Engineer
- County Surveyor,  County Engineer

OFFICE OF THE COUNTY RECORDER  
County of MARTIN

I hereby certify that this document was filed in the Co. Recorders Office at \_\_\_\_\_ M. on the \_\_\_\_\_ day of \_\_\_\_\_ A.D., 19\_\_\_\_

County Recorder \_\_\_\_\_

By \_\_\_\_\_, Deputy

DOCUMENT NO. \_\_\_\_\_

**S.E. Cor., Sec. 17, T. 102 N., R. 30W.  
(Fairmont Twp)**

**Statement of Evidence**

The corner was originally established during the Public Land Survey of 1854, by Oswald Brunius.

The Martin County Highway Dept. Tie Records indicate the corner was a stone "+", with a 3/4" steel rod over stone (4" deep). Ties - 38.72 E = 3/4" iron shaft R.P., 106.90 NW = 3/4" iron shaft R.P.

On Aug. 23, 1995, I found a 5/8" x 18" bolt (8" deep) in accordance with previous ties. Replaced bolt with a 5/8" x 24" iron rod with alum. cap (6" deep)

The History shown was obtained from the Martin County Highway Dept. Tie Records and existing Certificates of Location, only. Further History information may be obtained from the Martin County Recorder.