

OIL AND FLAMMABLE INTERCEPTORS

MINNESOTA DEPARTMENT OF LABOR AND INDUSTRY

REQUIREMENTS FOR OIL AND FLAMMABLE INTERCEPTORS

Refer to the 2020 Minnesota Plumbing Code, Sections 1009.0, 1011.0, and 1017.0 for more information about oil and flammable waste interceptors.

WHEN ARE INTERCEPTORS REQUIRED?

The 2020 Minnesota Plumbing Code requires an interceptor for oily or flammable wastes that may damage the sewer system, including where drains are provided in the following locations:

- Auto repair shops and service stations
- Factories where oily and/or flammable wastes are produced
- Car washes
- Enclosed parking garages over 1,000 square feet

GENERAL DESIGN REQUIREMENTS

- The interceptor must have a 2-inch minimum vapor vent extending independently to the outer air.
- Drains upstream of the interceptor must be properly sized, may not be trapped, and must drain dry. A sand interceptor meeting Section 1016.0 is permitted upstream of a flammable waste interceptor in vehicle wash facilities.
- Outlet drains must be at least 3 inches in diameter with full-size cleanout to grade.
- A discharge line vent must be taken off above the centerline of the drain and must rise within 45 degrees of the vertical to 6 inches minimum above the lowest floor drain flood level before offsetting horizontally. This vent may not connect to the interceptor's vapor vent.
- Interceptors must be readily accessible and provided with a gas-tight cover.
- Facilities served by on-site sewage disposal systems must have an approved interceptor prior to discharging into an exterior holding tank. The holding tank must be dedicated to the flammable waste interceptor discharge only. A dedicated holding tank does not mean the waste interceptor may be omitted.

INTERCEPTOR TYPES

Rated interceptors are interceptors that have a maximum flow rate determined by the manufacturer. Rated interceptors must be stamped or labelled by the manufacturer with the maximum flow rate. When rated interceptors are used:

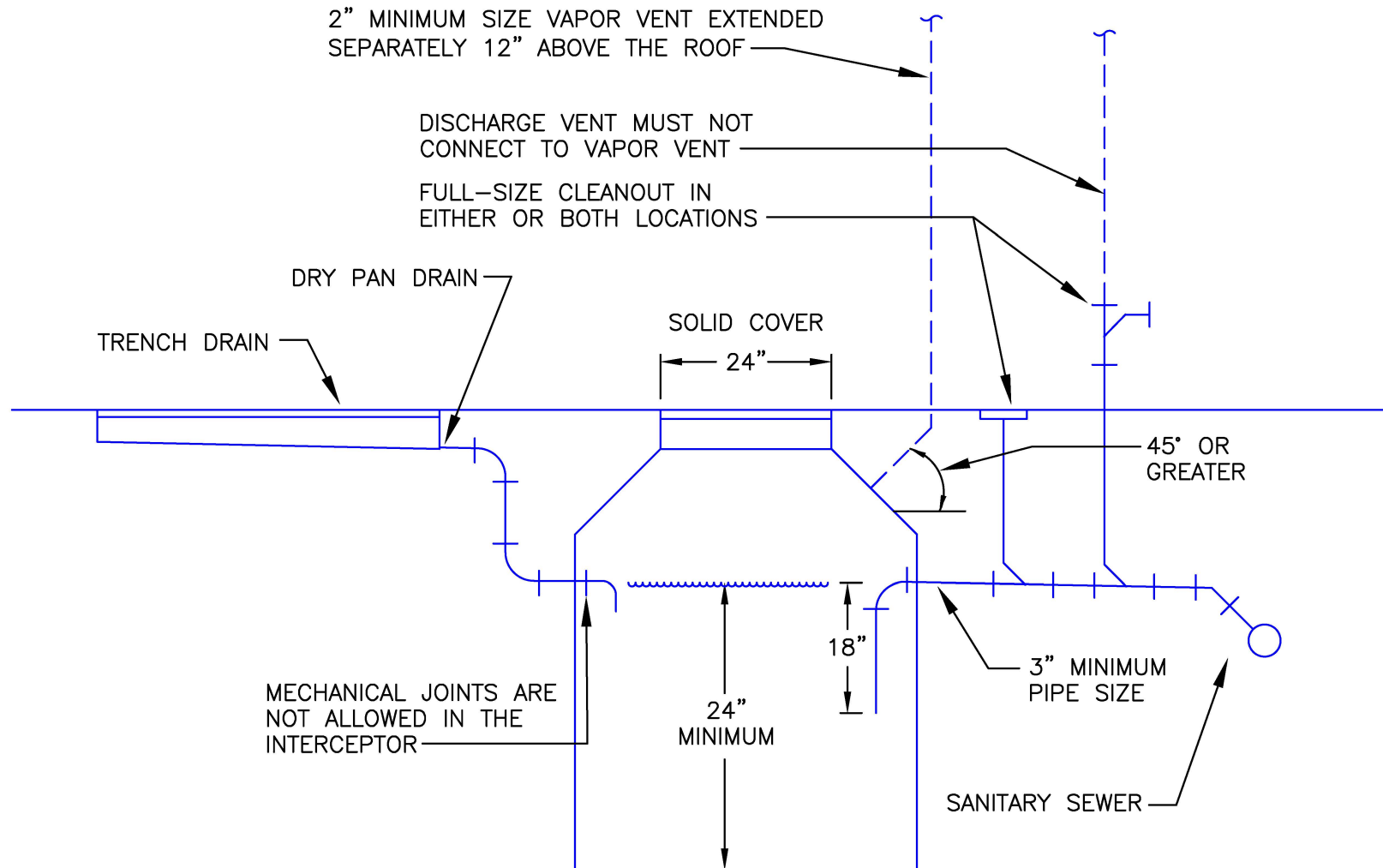
- Each interceptor shall be rated equal or greater than the incoming flow and shall be provided with 2-inch minimum overflow line to a minimum 550-gallon waste oil tank.
- The overflow storage tank must be approved for the application and must have a 2-inch minimum pump-out connection at grade, and a 1.5-inch minimum vent terminating independently outside the building at least 10 feet above grade at an approved location.
- The local fire department may have additional requirements for the overflow storage tank and should also be consulted prior to installation.

Unrated interceptors do not have a maximum flow rate determined by the manufacturer. Unrated interceptors must include:

- At least 2 feet of depth below the discharge pipe invert.
- A water seal not less than 18 inches on the outlet.
- Where not more than three motor vehicles are stored, or are stored and also serviced, the minimum capacity is 6 cubic feet. For each additional vehicle up to 10 vehicles, 1 cubic foot must be added for each vehicle. Beyond 10 vehicles, the sizing must be approved by the administrative authority.
- Where vehicles are serviced and not stored, the minimum capacity is 6 cubic feet or 1 cubic foot for each 100 square feet of drained surface, whichever is greater. "Serviced" means vehicle repair, maintenance, oil or other fluids change, or similar.

Engineered interceptors are specifically designed for an individual project by a licensed professional engineer. The professional engineer and the interceptor manufacturer must document that the interceptor is properly designed and sized for the specific project.

M.R. CHAPTER 4714, SECTION 1017.0



STORAGE AREA:

WHERE UP TO 3 MOTOR VEHICLES ARE STORED, THE INTERCEPTOR MUST HAVE A MINIMUM CAPACITY OF 6 CUBIC FEET. 1 CUBIC FOOT OF CAPACITY MUST BE ADDED FOR EACH VEHICLE UP TO 10 VEHICLES. FOR MORE THAN 10 VEHICLES, THE MINIMUM CAPACITY IS 35 CUBIC FEET.

SERVICE AREA:

WHERE VEHICLES ARE SERVICED, THE INTERCEPTOR MUST BE SIZED USING A NET CAPACITY OF 1 CUBIC FOOT FOR EACH 100 SQUARE FEET OF SURFACE TO BE DRAINED INTO THE INTERCEPTOR, WITH A MINIMUM OF 6 CUBIC FEET.