

# INSPIRATION

“ YOU DO YOUR PART AND I’LL DO MINE ”

- JENNIE DEAN

SIMPLE   DETERMINED   SELF-DIRECTED   UNDAUNTED   PURITY OF VISION   PROFOUND BELIEF IN EDUCATION



## FOCUS GROUP FEEDBACK

**HARD TO FIND** EVEN WHEN YOU ARE THERE

SITE IS **OPEN** & VISIBLE

HOW TO **MARKET** THE SITE FOR VIRGINIA TOURISM -  
“HISTORIC HEART WITH A MODERN BEAT.”

GET PEOPLE TO “**SEE**” THIS SITE

NEED TO **HONOR** THE EDUCATORS

**LIKE**

BRONZE MAP TO VISUALIZE THE SITE SPATIALLY  
SENSORY - BUTTONS TO PUSH TO LEARN HISTORY  
FOUNDATIONS/MODELS

**IMPROVEMENTS**

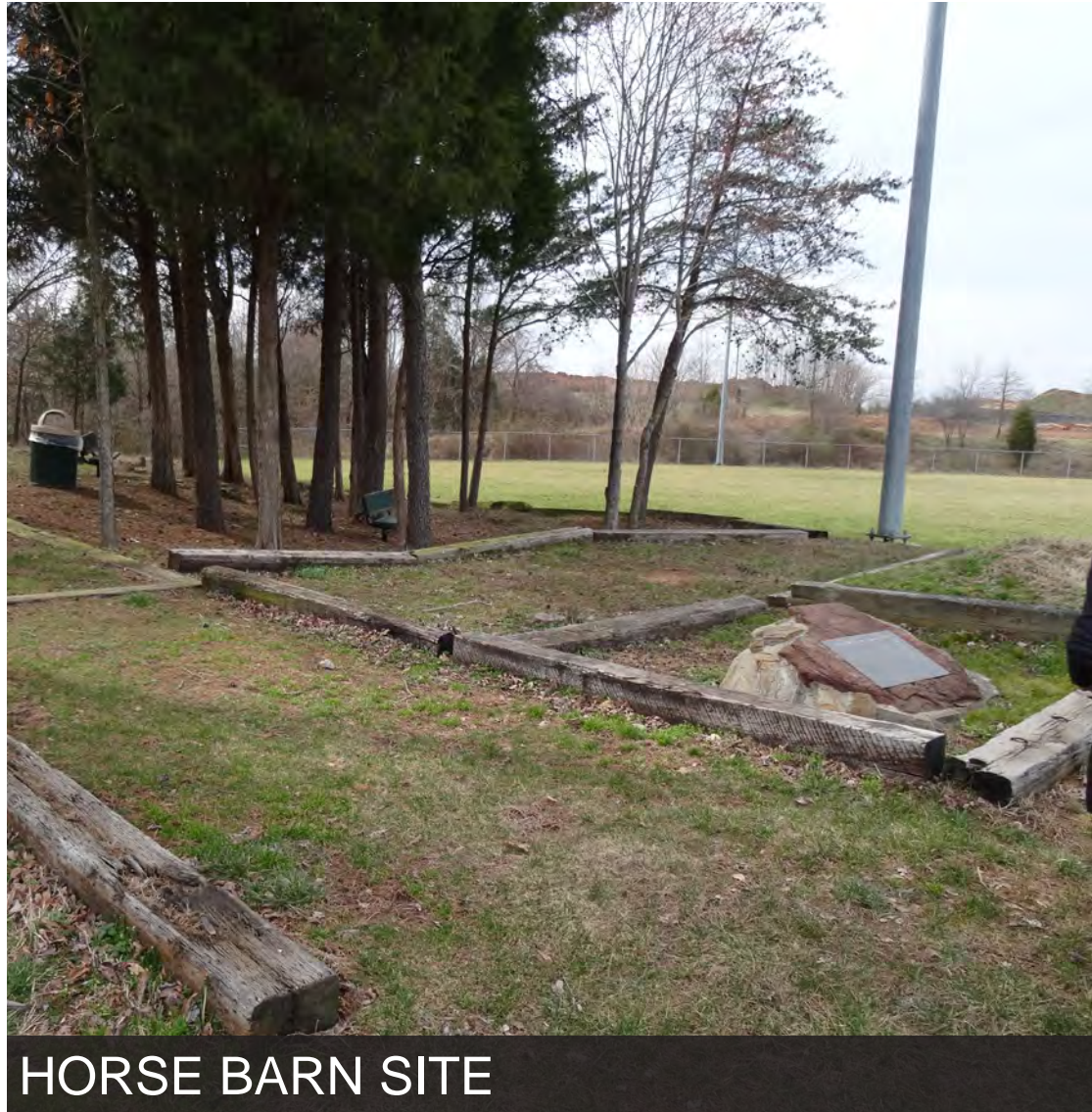
INCORPORATE STUDENTS - REMIND PEOPLE THIS WAS A SCHOOL  
TECHNOLOGY NEEDS TO BE UPDATED (QR READER, ETC.); MAKE INTERACTIVE  
TESTIMONIALS  
WALKING/INTERPRETIVE TOURS

**POTENTIAL USES**

HISTORIC SITE TO TEACH ABOUT AND HONOR MS. DEAN AND THE SCHOOL  
LEARN FROM THE SITE/INTERPRETATION  
AMPHITHEATER  
SCHOOL USE

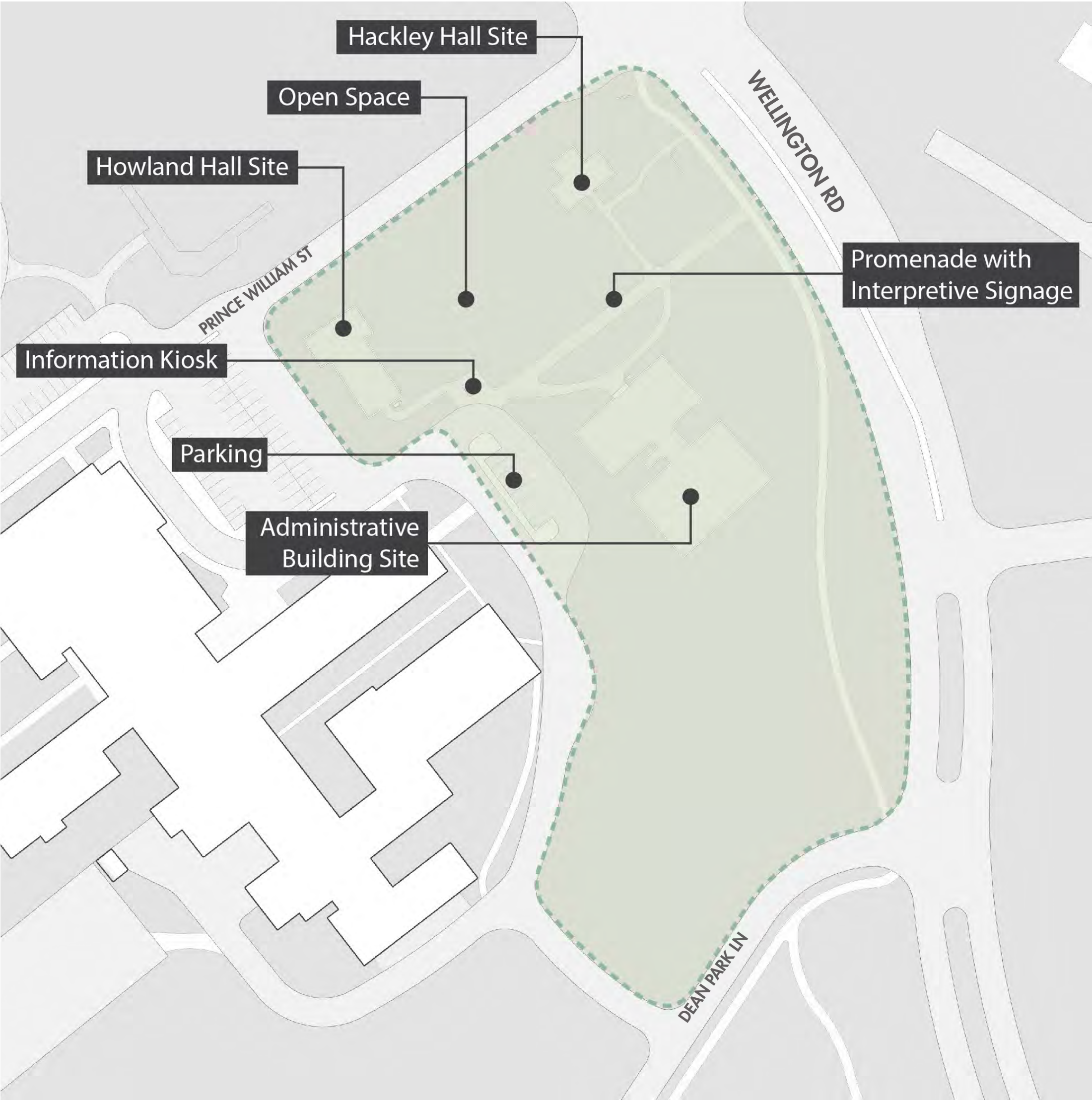


# EXISTING CONDITIONS SITE AND SURROUNDINGS





# EXISTING CONDITIONS ANALYSIS



LOCATION AND SITE ELEMENTS



CONNECTIONS

- ROADS
- PATHS/SIDEWALKS



TOPOGRAPHY



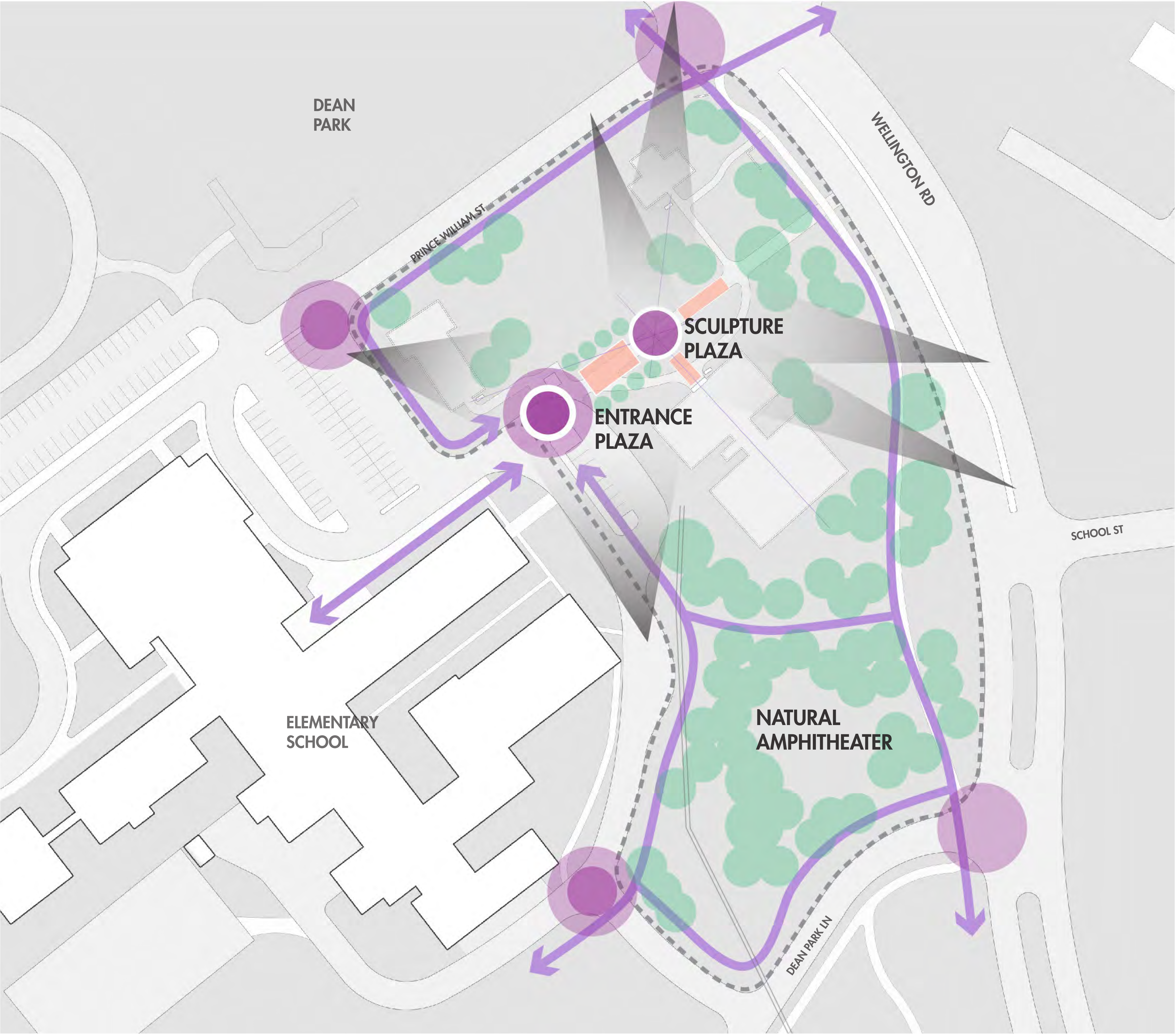
 **JENNIE DEAN MEMORIAL**  
MANASSAS, VA



**MEETING**  
COMMUNITY MEETING  
JUNE 2018



# FRAMEWORK CONCEPT DEVELOPMENT



## EXPLORED VARIOUS OPTIONS



- ENTRANCE PLAZA
- SCULPTURE PLAZA
- PLAZA AREA CONNECTIONS
- PRIMARY SITE ENTRANCE
- SECONDARY SITE ENTRANCE
- PATHWAY CONNECTIONS
- TREE CLUSTERING
- VIEWS



# CONCEPT PLAN PRESERVE AND IMPROVE



## CONCEPT IDEAS

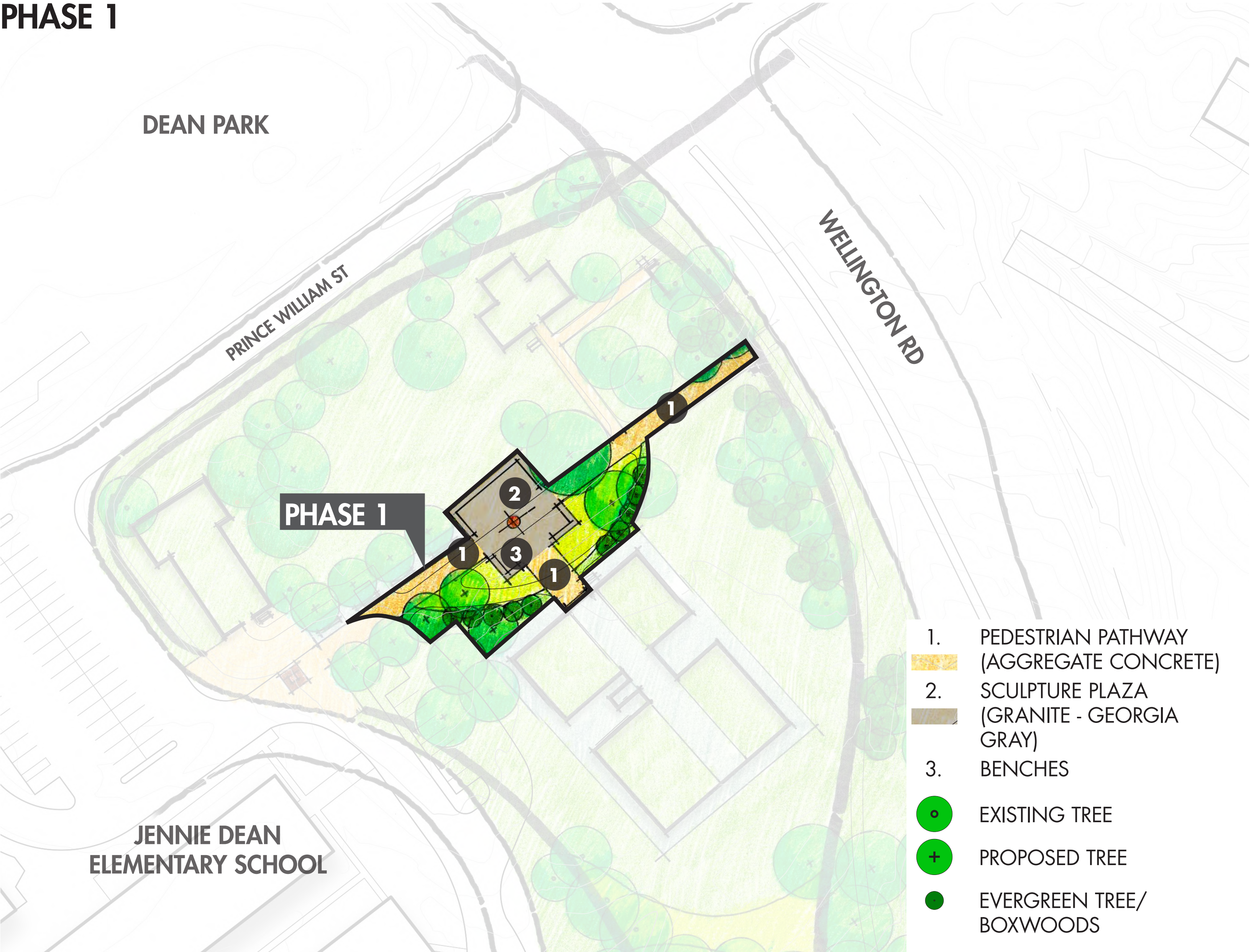
- CREATE A DEFINED VISITOR ENTRANCE PLAZA
- LOCATE THE JENNIE DEAN SCULPTURE ALONG PRIMARY VISTA FROM ENTRANCE PLAZA
- CREATE A TREE-LINED PATHWAY CONNECTING ENTRANCE PLAZA TO SCULPTURE PLAZA
- OPEN VIEW CORRIDORS WITH STRATEGIC CLUSTERING OF TREES
- CREATE A NATURAL AMPHITHEATER AREA FRAMED BY VEGETATION AND PATHWAYS
- PROMOTE MULTIPLE PROGRAMMING OPPORTUNITIES AT THE AMPHITHEATER AREA - OUTDOOR CLASSROOMS, TEMPORARY ART INSTALLATIONS, ETC.
- RELOCATE EXISTING PARKING TO PROVIDE SPACE FOR REALIGNMENT OF ROAD FOR BETTER ENTRY EXPERIENCE
- REALIGN AND ADD PATHWAYS
- ADD TREES AND VEGETATION FOR BUFFER AND BEAUTY
- PROMOTE LIGHTING AND SEASONAL INTEREST
- PROVIDE INTERPRETIVE ELEMENTS AND AMENITIES - BENCHES; INTERACTIVE ELEMENTS; DIGITAL EXPERIENCE WITH QR CODES, TOUCHPADS, ETC.
- CONNECT TO DEAN PARK, HORSE BARN AREA WITH TRAILS

- |  |                               |
|--|-------------------------------|
| 1. ENTRANCE PLAZA  | EXISTING TREE                 |
| 2. SCALE MODEL   | PROPOSED TREE                 |
| 3. INTERPRETIVE PANELS   | EVERGREEN TREE/ BOXWOODS      |
| 4. SCULPTURE PLAZA   | PLANTING BED                  |
| 5. BENCHES   | SCULPTURE PLAZA (GRANITE)     |
| 6. GRAVEL PATHWAYS   | PATHWAYS (AGGREGATE CONCRETE) |
| 7. REALIGNED/NEW SHARED USE PATHS                                | LAWN                          |
| 8. AMPHITHEATER/OUTDOOR CLASSROOM/ MULTIPURPOSE USE              |                               |
| 9. PLANTING BED  |                               |
| 10. TREE CLUSTER   |                               |
| 11. LAWN/MEMORIAL GARDEN   |                               |
| 12. REALIGNED ROAD   |                               |
| 13. DROP-OFF AREA/LIMITED PARALLEL PARKING                       |                               |
| 14. SIGNAGE/IDENTITY ELEMENT                                     |                               |
| 15. PRESERVE THE CIRCULAR/OVAL CONFIGURATION AND EVERGREEN TREES |                               |



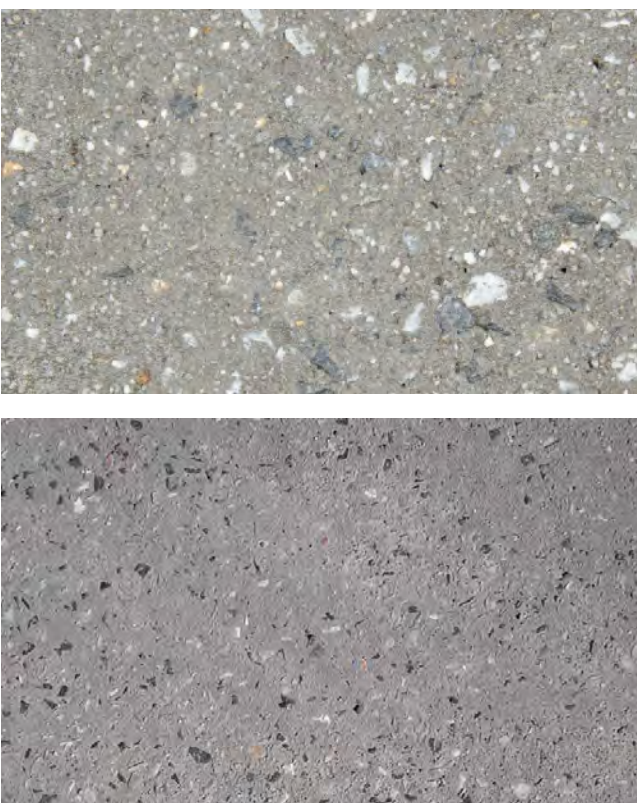
# MASTER PLAN UPDATE PHASING & SCULPTURE

## PHASE 1



## PHASE 1 MATERIALS

PEDESTRIAN PATHWAYS  
AGGREGATE CONCRETE



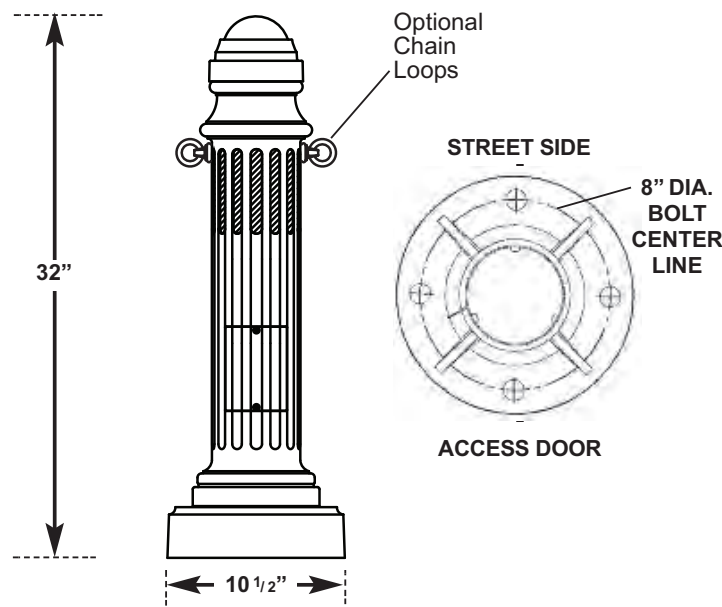
SCULPTURE PLAZA  
GRANITE



BENCHES  
STEEL



BOLLARDS  
CAST ALUMINUM WITH  
INTEGRATED LED LIGHTING



## MASTER PLAN UPDATE

In 1992, the Manassas City Council formally approved a master plan for the development of a five-acre archaeological memorial located on the original site of the Manassas Industrial School for Colored Youth. The original master plan included the outlining of the foundations of 3 original buildings, a statue of Miss Jennie Dean, landscaping, pathways, an information kiosk, parking, an amphitheater and future restrooms. Phase 1 of the master plan was dedicated in 1995 and included just the replicated foundations, an information kiosk and model of the original campus with associated parking and gravel walkways. The statue and amphitheater were proposed for later phases of the project. Now, in 2018 the City proposes to update the original master plan with a refreshed landscape plan, a more natural amphitheater, handicapped accessible walkways, new information kiosks and most significantly a plaza with the originally planned statue of Miss Jennie Dean.

The statue, with an accessible plaza and walkway, is proposed to be completed first, with new walkways, the amphitheater and enhanced access coming later in conjunction with improvements to Dean Park. If fundraising is successful, the City would anticipate installing the statue and plaza in the fall of 2019, 126 years from when the Manassas Industrial School was chartered on October 7, 1893.



## MISS JENNIE DEAN SCULPTURE

ARTIST CHRIS HILL

*"Jennie Dean was, above all, an altruist determined to elevate the welfare of her people through education, faith and tradesmanship. In order to convey this, I have designed Jennie Dean with an outstretched hand reaching towards viewers, as if inviting to lift them up. Her forward leg is bracing for the viewer to take her hand. She is bent slightly at the waist in order to lower her hand within reach. Her hand will be approximately eye level with the viewer. Her left arm is outstretched, forming a clear line between the head, the heart, and the hand. These are the three parts of the body Jennie Dean had wished to strengthen through academic education, participation in faith services, and training in trade and industry. Over time, I hope that people will take her hand and wear away its patina. When this hand begins to polish and shine, it will reflect the engagement Jennie Dean continues to inspire in the community."*

*Her forward movement symbolizes the progress Miss Jennie Dean made in overcoming challenges, and creates a dynamic pose with tension and flow from all sides of the sculpture. The ball of her back foot is seated on the base, but her heel is raised, suggesting her forward motion. She is in stride with her dress flowing behind her in such a way that it breaks into the space surrounding the sculpture. The hexagonal base will be adorned with six bronze reliefs of classroom scenes illustrating trades taught at the school.*

*Although Jennie Dean is seated in her only known photograph, this pose would not convey who she was. A seated pose would suggest she was an observer or witness to the world around her, a pose better suited for a judge or for a more monumental space like the Lincoln Memorial. Because the Jennie Dean sculpture is to be viewed in the round—unlike a seated sculpture that is typically viewed from the front only—I wanted to create a statue that engages the viewer, is in forward motion, and is visually interesting from all sides. I believe these design considerations will create an engaging Jennie Dean Memorial sculpture, and encourage viewers to learn about Jennie Dean and the impact she had. My hope is that this landmark will not only be a focal point for the community Jennie Dean served, but also draw in new visitors to this historic site."*

Artist Chris Hill, June 1, 2018

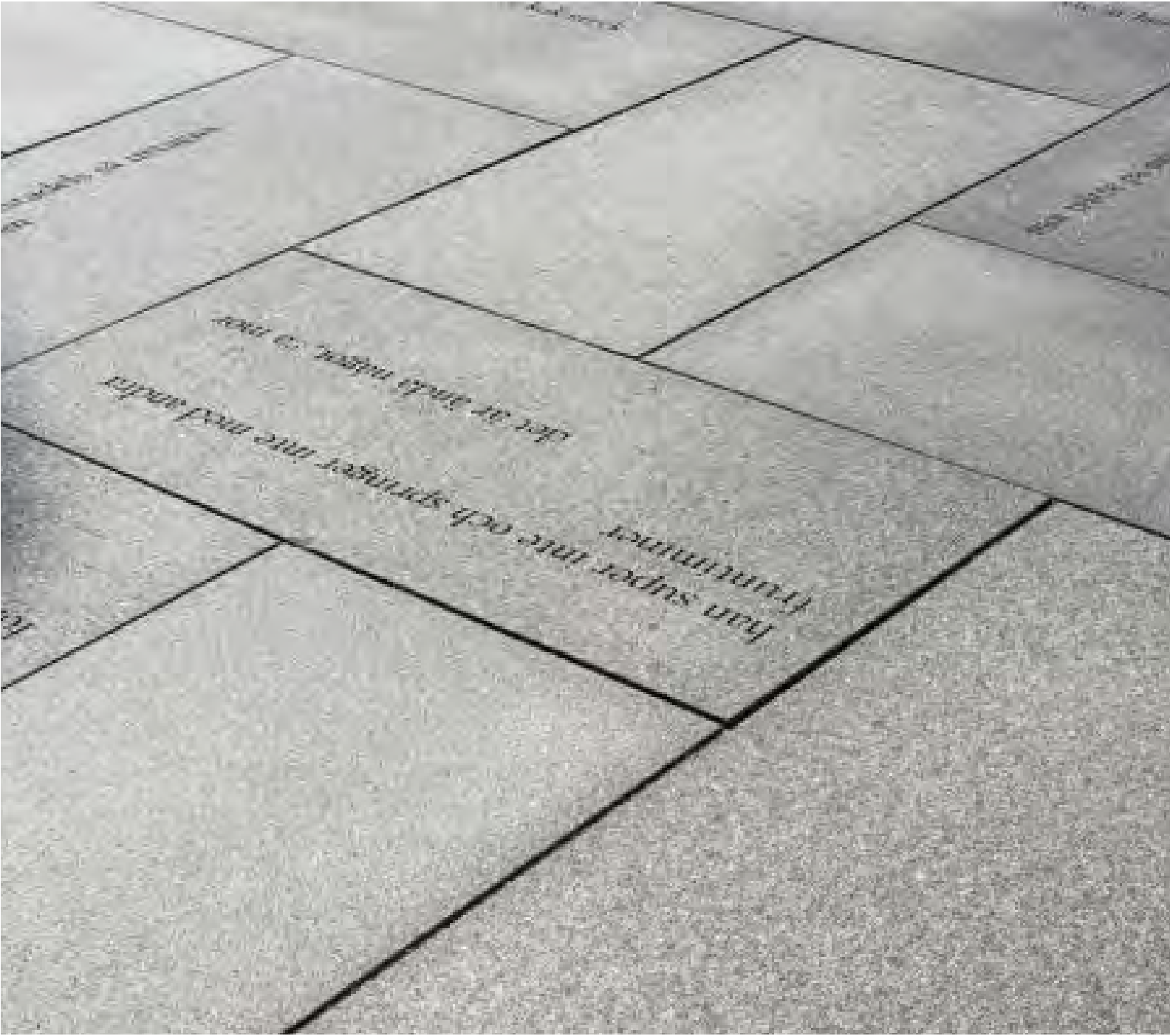


# PRECEDENTS

## ENTRANCE PLAZA EXPERIENCE



## PAVING



## INTERPRETIVE ELEMENTS



## TECHNOLOGY



## BENCHES





# PRECEDENTS

SIGNATURE TREE AND TREE CLUSTER



PLANTING BEDS



SEASONAL INTEREST



MEMORIAL GARDEN



TREE ALLEE



NIGHT APPEAL





# PRECEDENTS

## NATURAL AMPHITHEATER



## COMMUNITY EVENTS



## OUTDOOR CLASSROOM



## CULTURE/HISTORY EVENTS





# CONCEPT PLAN PRESERVE AND IMPROVE [TREE REMOVAL PLAN]



## CONCEPT IDEAS

- CREATE A DEFINED VISITOR ENTRANCE PLAZA
- LOCATE THE JENNIE DEAN SCULPTURE ALONG PRIMARY VISTA FROM ENTRANCE PLAZA
- CREATE A TREE-LINED PATHWAY CONNECTING ENTRANCE PLAZA TO SCULPTURE PLAZA
- OPEN VIEW CORRIDORS WITH STRATEGIC CLUSTERING OF TREES
- CREATE A NATURAL AMPHITHEATER AREA FRAMED BY VEGETATION AND PATHWAYS
- PROMOTE MULTIPLE PROGRAMMING OPPORTUNITIES AT THE AMPHITHEATER AREA - OUTDOOR CLASSROOMS, TEMPORARY ART INSTALLATIONS, ETC.
- RELOCATE EXISTING PARKING TO PROVIDE SPACE FOR REALIGNMENT OF ROAD FOR BETTER ENTRY EXPERIENCE
- REALIGN AND ADD PATHWAYS
- ADD TREES AND VEGETATION FOR BUFFER AND BEAUTY
- PROMOTE LIGHTING AND SEASONAL INTEREST
- PROVIDE INTERPRETIVE ELEMENTS AND AMENITIES - BENCHES; INTERACTIVE ELEMENTS; DIGITAL EXPERIENCE WITH QR CODES, TOUCHPADS, ETC.
- CONNECT TO DEAN PARK, HORSE BARN AREA WITH TRAILS

- |  |                               |
|--|-------------------------------|
| 1. ENTRANCE PLAZA  | EXISTING TREE TO BE RETAINED  |
| 2. SCALE MODEL   | EXISTING TREE TO BE REMOVED   |
| 3. INTERPRETIVE PANELS   | PROPOSED TREE                 |
| 4. SCULPTURE PLAZA   | EVERGREEN TREE/ BOXWOODS      |
| 5. BENCHES   | PLANTING BED                  |
| 6. GRAVEL PATHWAYS   | SCULPTURE PLAZA (GRANITE)     |
| 7. REALIGNED/NEW SHARED USE PATHS                                | PATHWAYS (AGGREGATE CONCRETE) |
| 8. AMPHITHEATER/OUTDOOR CLASSROOM/ MULTIPURPOSE USE              | LAWN                          |
| 9. PLANTING BED  |                               |
| 10. TREE CLUSTER   |                               |
| 11. LAWN/MEMORIAL GARDEN   |                               |
| 12. REALIGNED ROAD   |                               |
| 13. DROP-OFF AREA/LIMITED PARALLEL PARKING                       |                               |
| 14. SIGNAGE/IDENTITY ELEMENT                                     |                               |
| 15. PRESERVE THE CIRCULAR/OVAL CONFIGURATION AND EVERGREEN TREES |                               |