

City of Manassas
Department of Community Development
Department of Engineering
October 13th 2022

Liberia 3rd Lane Eastbound Virtual Public Information Meeting



Meeting Agenda

- Transportation Planning Program Overview
- Project Overview
- Proposed Design Elements
- Funding and Schedule
- Public Comment



Transportation Planning Program Overview



Transportation Planning Program



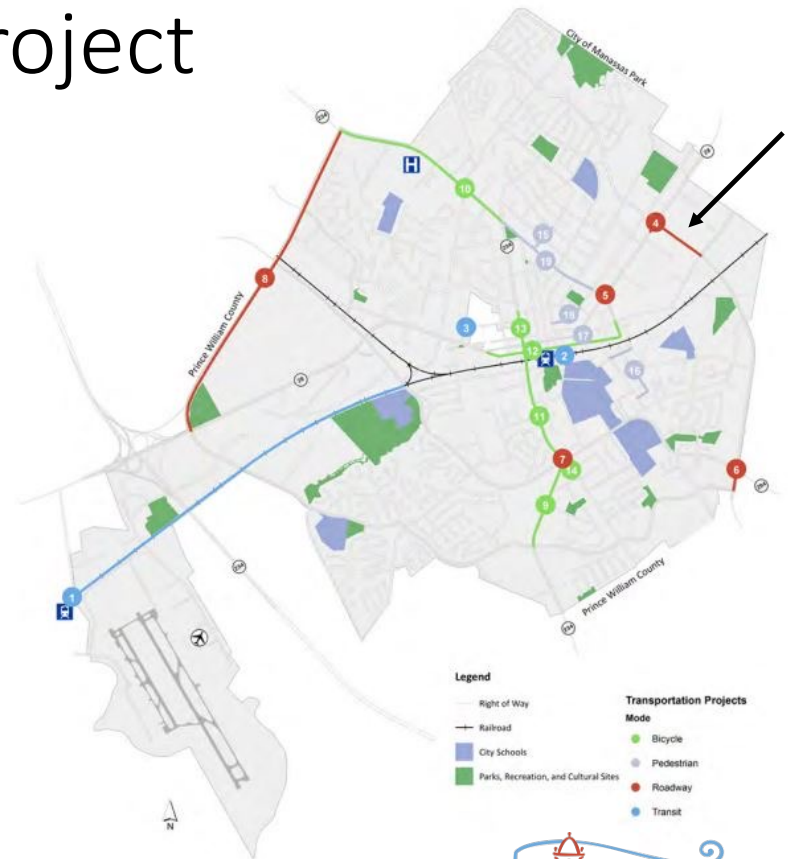
- Top Priority in 2016
- Creation of Transportation Planning Program in Community Development in 2017.
- City's first Transportation Master Plan (TMP) in 2019
- 2040 Comprehensive Plan adopted in Feb 2020



Comprehensive Plan – Key Project

Table 6.1 - Key Transportation Projects

Project #	Name & Description	Project Total Cost Estimate¹	Notes
1	Virginia Railway Express Broad Run Station expansion and third track from Broad Run Station to Wellington Rd.	\$110,700,000	
2	Virginia Railway Express Manassas Station platform extension	\$9,125,000	
3	OmniRide bus routes enhancement & hub relocation	\$500,000	
4	Improve Liberia Ave. & Rt. 28 Intersection and widen eastbound Liberia Ave. to three lanes up to Euclid Ave.	\$3,665,000	CIP Project T-046 - Phase 2
5	Convert signalized intersection to roundabout at Rt. 28 & Sudley Rd.	\$3,740,000	CIP Project T-085
6	Improve Liberia Ave. & Prince William Pkwy./Hastings Dr. intersection	TBD	Need for additional study to determine scope and cost
7	Improve Wellington Rd. & Dumfries Rd./Grant Ave. intersection	\$250,000	Included in CIP Project T-021
8	Widen Godwin Dr. to six lanes from Sudley Rd. to Nokesville Rd.	\$40,735,000	Coordinate with Rt. 28 Corridor roadway improvements (Godwin Drive extension)
9	Construct shared-use path on Dumfries Rd. from Wellington Rd. to Hastings Dr.	\$2,460,000	
10	Add bike facilities on Sudley Rd. from Godwin Dr. to Grant Ave.	\$4,880,000	
11	Construct shared-use path on Grant Ave. from Prince William St. to Wellington Rd.	\$850,000	CIP Project T-021
12	Add bike lanes on Center St. & Prescott Ave. from Church St. to Quarry Rd.	\$100,000	Need for additional study after completion of Rt. 28 Corridor roadway improvements (Godwin Dr. extension)
13	Add bike lanes on Grant Avenue from Portner Ave. to Prince William St.	\$100,000	
14	Add bike facilities (sharrows and shared-use path) on South Grant Ave. from Orchard Ln. to Wellington Rd.	\$450,000	
15	Construct sidewalk on one side of Jackson Ave. from Sudley Rd. to Weir St.	\$735,000	
16	Improve pedestrian safety and access along the Fairview Ave. corridor	\$1,245,000	
17	Conduct pedestrian safety study and improvements at the intersection of Zebedee St./Quarry Rd./Centreville Rd.	TBD	Need for additional study to determine scope and cost
18	Construct sidewalk on south side of Mathis Ave. from Main St. to Maple St.	\$395,000	Need for additional study to determine scope and cost
19	Construct sidewalk on north side of Sudley Rd. from Grant Ave. to Mathis Ave.	\$1,000,000	
20	Citywide traffic signal optimization and software/equipment upgrade	\$500,000	
21	Citywide multimodal wayfinding project	TBD	Need for additional study to determine scope and cost

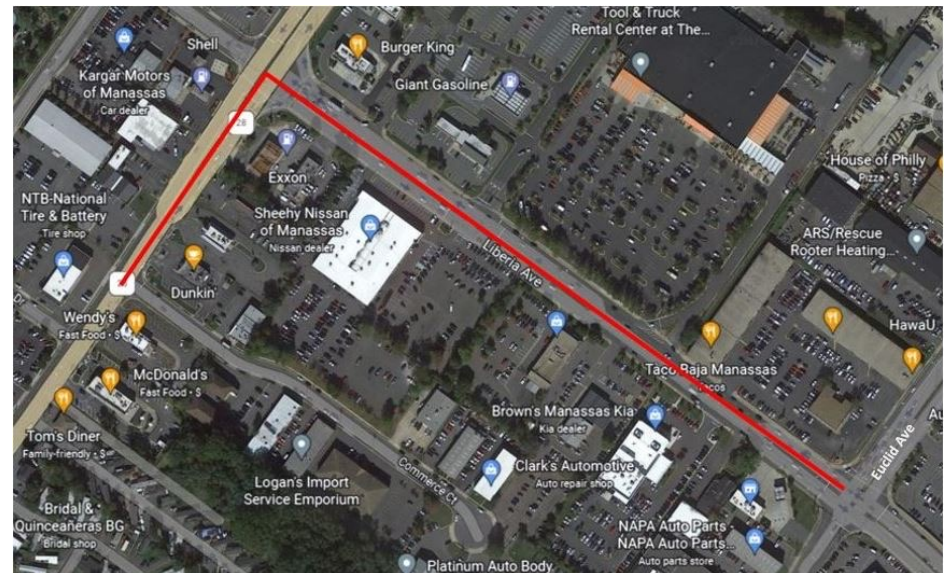


Project Overview



Location

- Liberia Ave between Route 28 and Euclid Ave
- Route 28 northbound between Commerce Ct and Liberia Ave
- Heavily used commercial corridor



How did we get here?

- Unsuccessfully applied for Smart Scale funding in FY 2017 to widen Liberia Ave to six lanes between Prince William Parkway and Route 28.
- VDOT Strategically Targeted Affordable Roadway Solutions (STARS) Study completed shortly afterward to identify affordable corridor improvements.
 - Resulted in completion of a signal optimization project
- Corridor re-evaluated as part of the 2019 TMP.
 - City traffic model recommended widening Liberia Ave to three lanes in the eastbound direction between Route 28 and Euclid Ave
 - Level of Service (LOS) at Route 28 and Liberia Ave will improve from F to D in the AM peak in existing conditions and LOS will improve from E to D in the PM peak in 2040



Project Goals

- Congestion Relief
- Improve regional road network connectivity between the City of Manassas, City of Manassas Park, and Fairfax County
- Improve pedestrian safety and connectivity
- Improve access management along the corridor



Concept Development

- Concept developed in January 2022
 - Currently at **10% design** – very early in the project development process!
 - Narrowed down to two alternatives, but the preferred alternative can be a mix
- Roadway improvements
 - Total of 0.47 miles of roadway improvements along Route 28 and Liberia Ave
 - Widening of Liberia Ave to three through lanes in the eastbound direction between Route 28 and Euclid Ave
 - Extend existing Route 28 northbound left turn lane onto Liberia Ave
- Pedestrian improvements
 - Sidewalk infill along Route 28
 - Wider sidewalk with 3' buffer along Liberia Ave
 - New pedestrian crossings on Liberia Ave
- Transit improvements
 - Coordinate with PRTC/OmniRide to improve future bus stops and pullout lanes



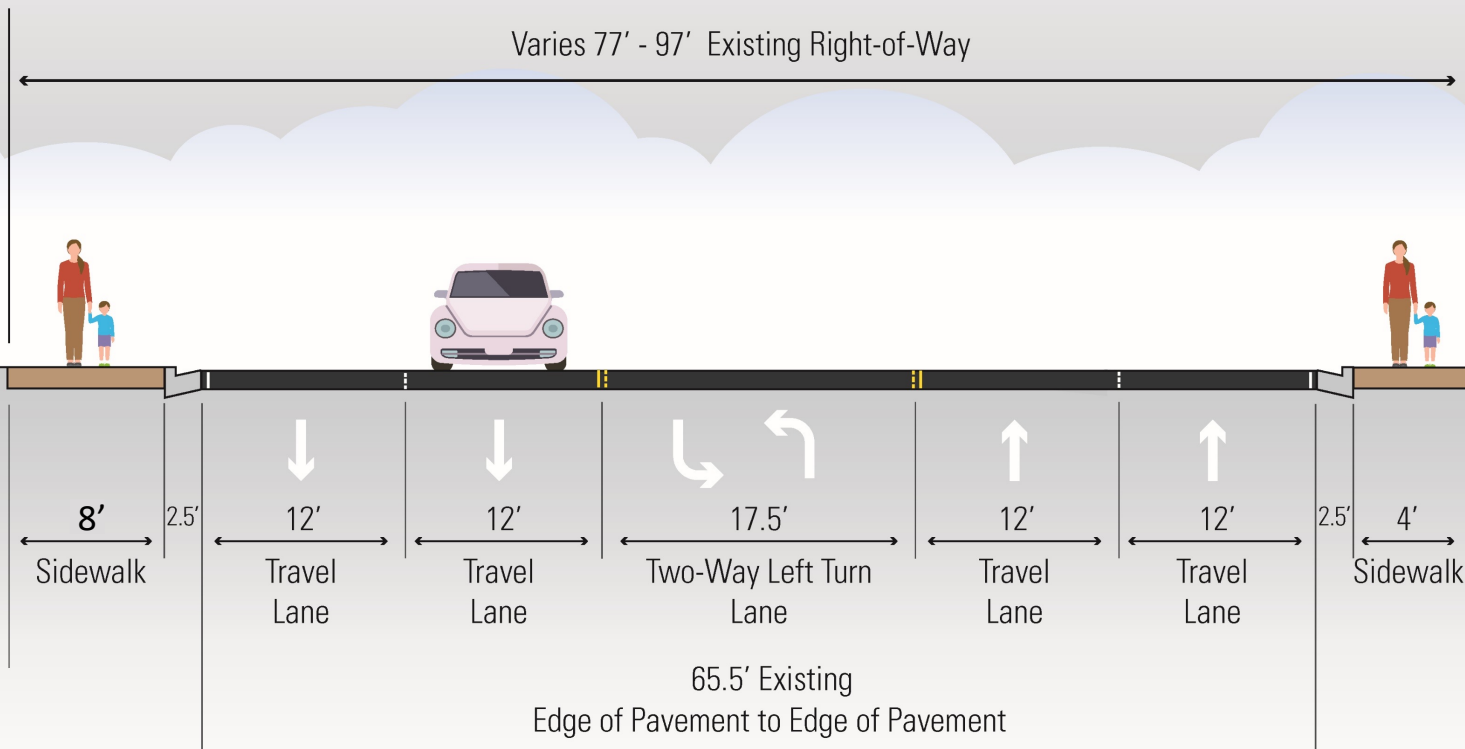
Proposed Design Elements



Project Overview



Liberia Avenue Typical Section - Existing

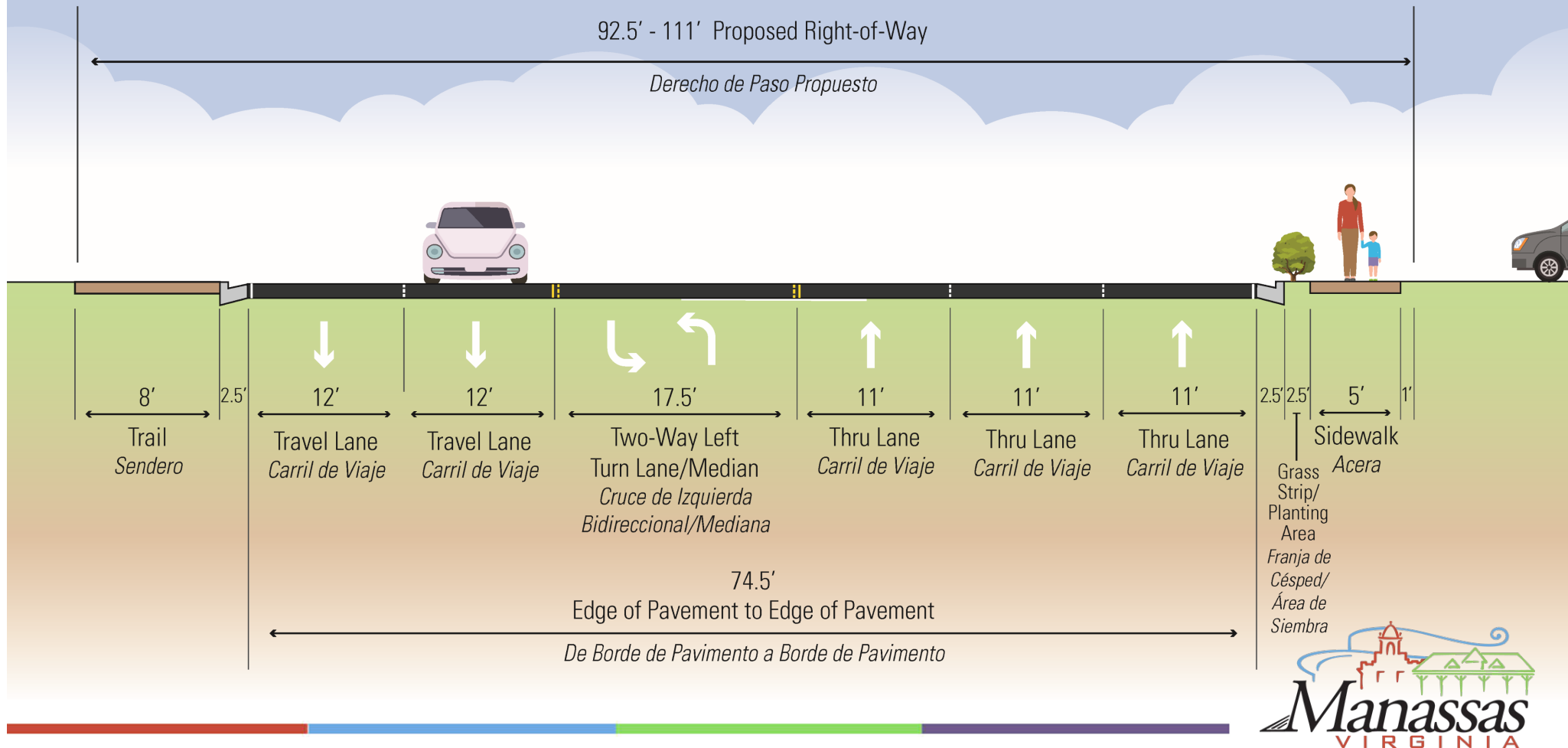


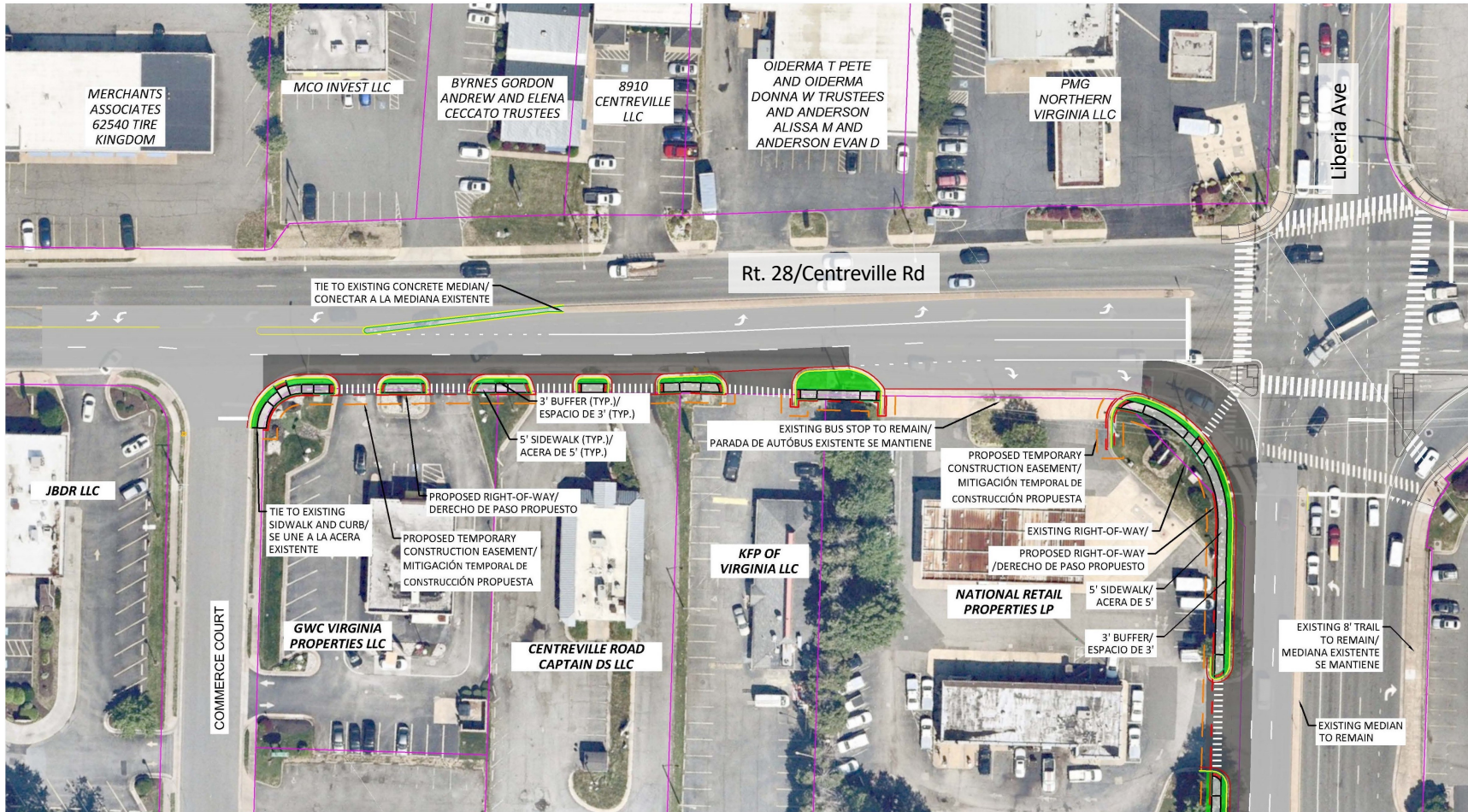
Alternative 1

- Liberia Ave
 - Additional 11' travel lane in eastbound direction (3 total)
 - Maintain 18' median to allow for directional and two-way left-turn lanes
 - Add a 5' sidewalk with 3' buffer on south side
 - Crosswalks at all intersections and driveways on south side
 - Signal relocation at Liberia Avenue and Home Depot/Manassas Junction/Sheehy Nissan
- Route 28
 - Extended northbound Left Turn Lane at Liberia Avenue
 - Continuous 5' sidewalk on east side from Commerce Ct to Liberia Ave



Liberia Avenue Typical Section – Alternative 1





Route 28 Improvements Alternative 1

DRAFT

THIS CONCEPTUAL
PLAN WAS PRODUCED
FOR DISCUSSION
PURPOSES ONLY.

PROP FULL DEPTH
ASPHALT PAVEMENT
PROP CONCRETE
(SIDEWALK/ MED)
PROP GRASS MEDIAN/
BUFFER
PROP MILL AND OVERLAY
PROP CURB & GUTTER

EXIST CURB/ EDGE OF
PAVEMENT
PROP ROW
PARCELS

ROAD EDGE
HYDRANTS
VALVES

ALTERNATIVE 1 LIBERIA AVENUE WIDENING

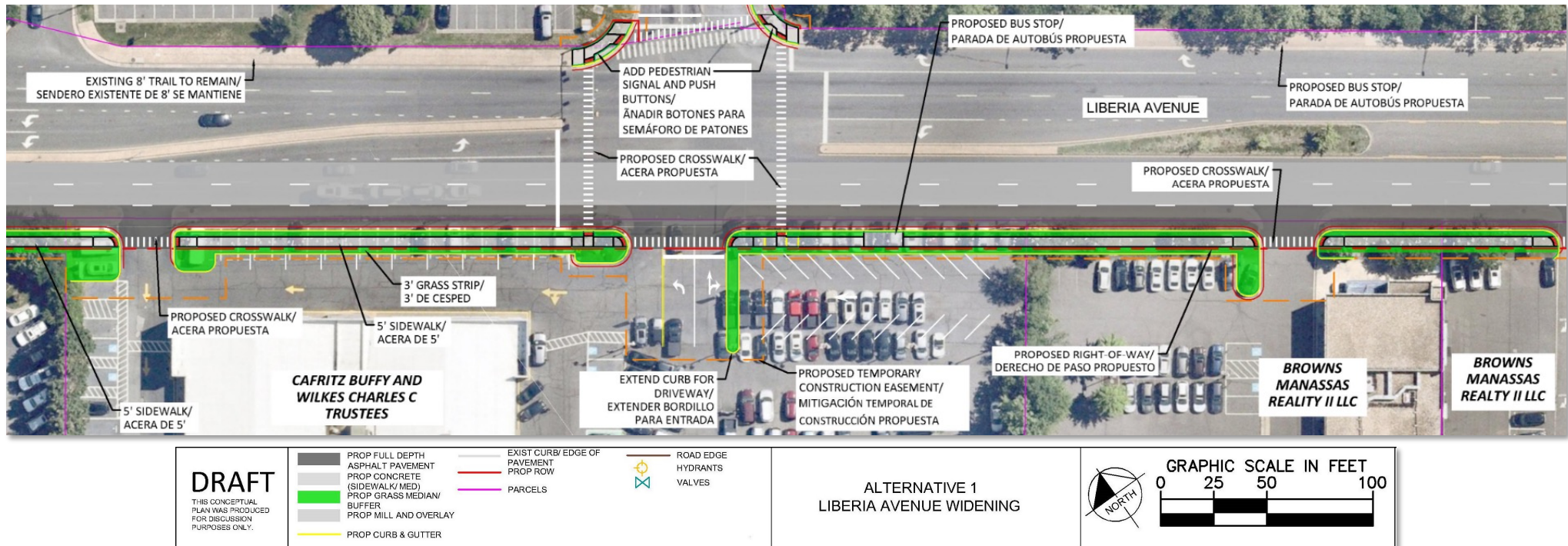


GRAPHIC SCALE IN FEET
0 25 50 100



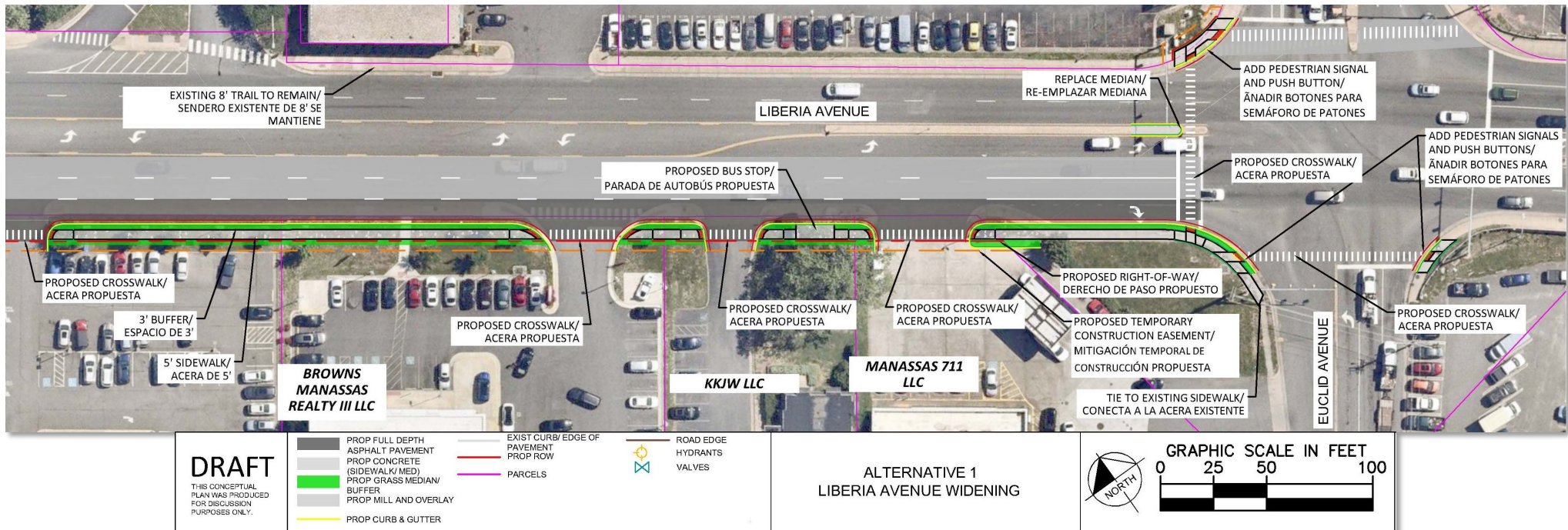
Liberia Ave (Route 28 to Brown's Subaru)

Alternative 1



Liberia Ave (Brown's Subaru to Euclid Ave)

Alternative 1

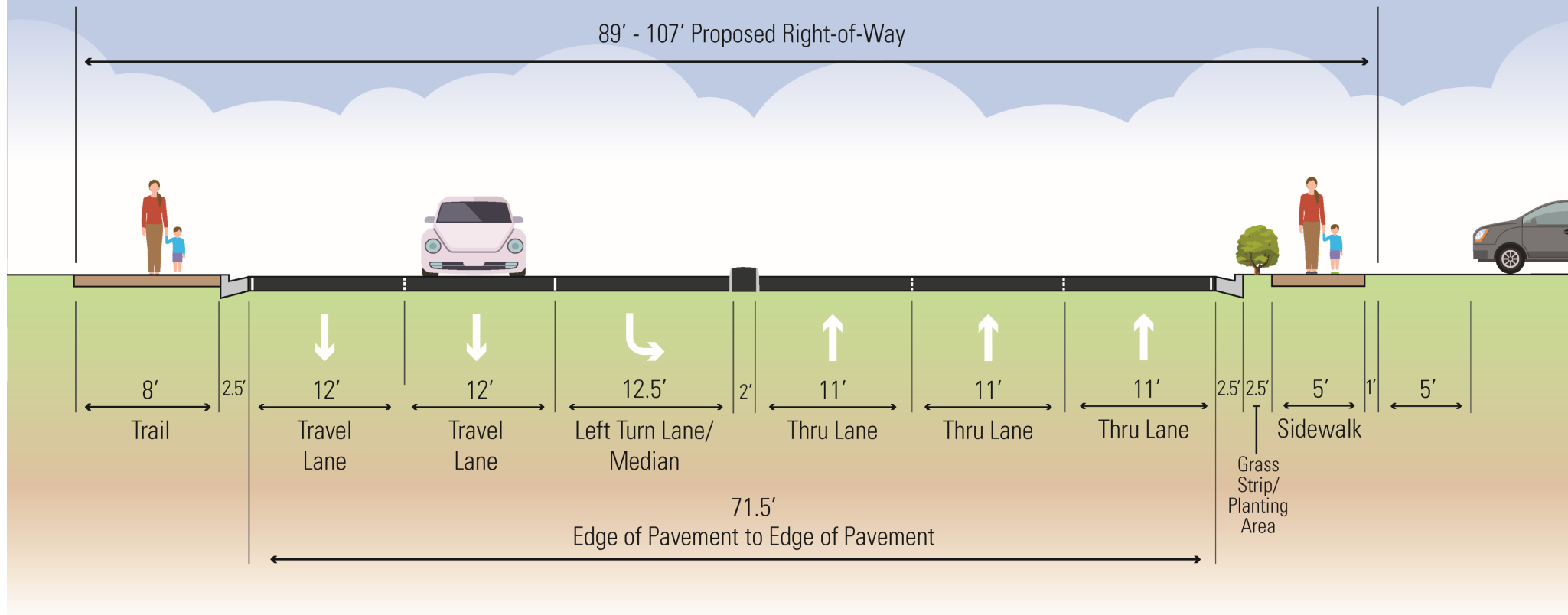


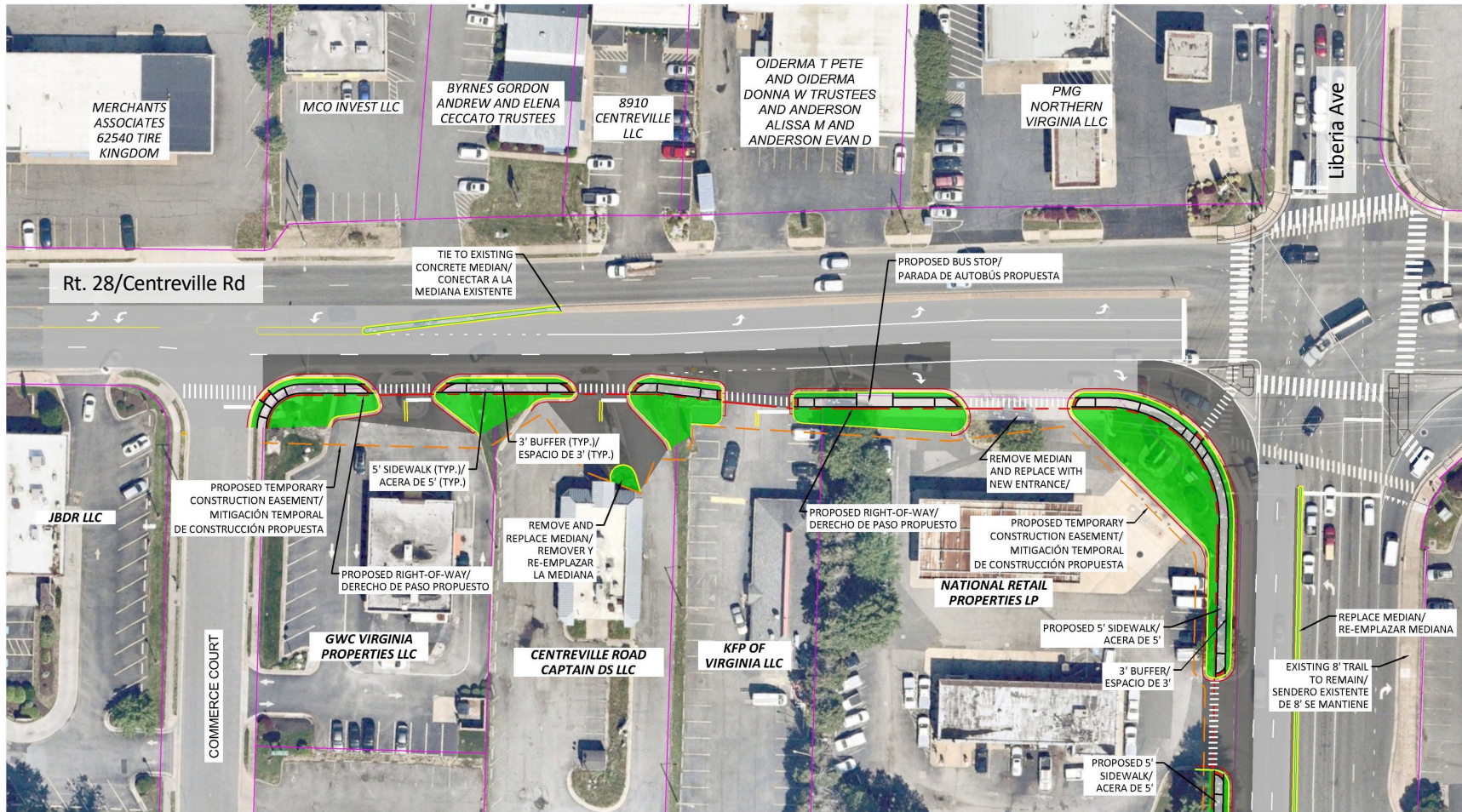
Alternative 2

- Liberia Ave
 - Additional 11' travel lane in eastbound direction (3 total)
 - Modified 15' median with directional left-turn lanes
 - Add a 5' sidewalk with 3' buffer on south side
 - Crosswalks at all intersections and driveways on south side
 - Signal relocation at Route 28 and Home Depot/Manassas Junction
- Route 28
 - Extended northbound Left Turn Lane at Liberia Avenue
 - Continuous 5' sidewalk on east side from Commerce Ct to Liberia Ave
 - Access Management / entrance improvements to driveways from Commerce Ct to Liberia Ave with bus stop relocated to the south
 - New, dedicated bus stop shifted south



Liberia Avenue Typical Section – Alternative 2





Route 28
Alternative 2

DRAFT

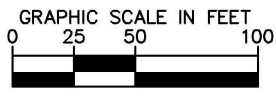
THIS CONCEPTUAL PLAN WAS PRODUCED FOR DISCUSSION PURPOSES ONLY.

- PROP FULL DEPTH ASPHALT PAVEMENT
- PROP CONCRETE (SIDEWALK/ MED)
- PROP GRASS MEDIAN/ BUFFER
- PROP MILL AND OVERLAY
- PROP CURB & GUTTER

- EXIST CURB/ EDGE OF PAVEMENT
- PROP ROW
- PARCELS

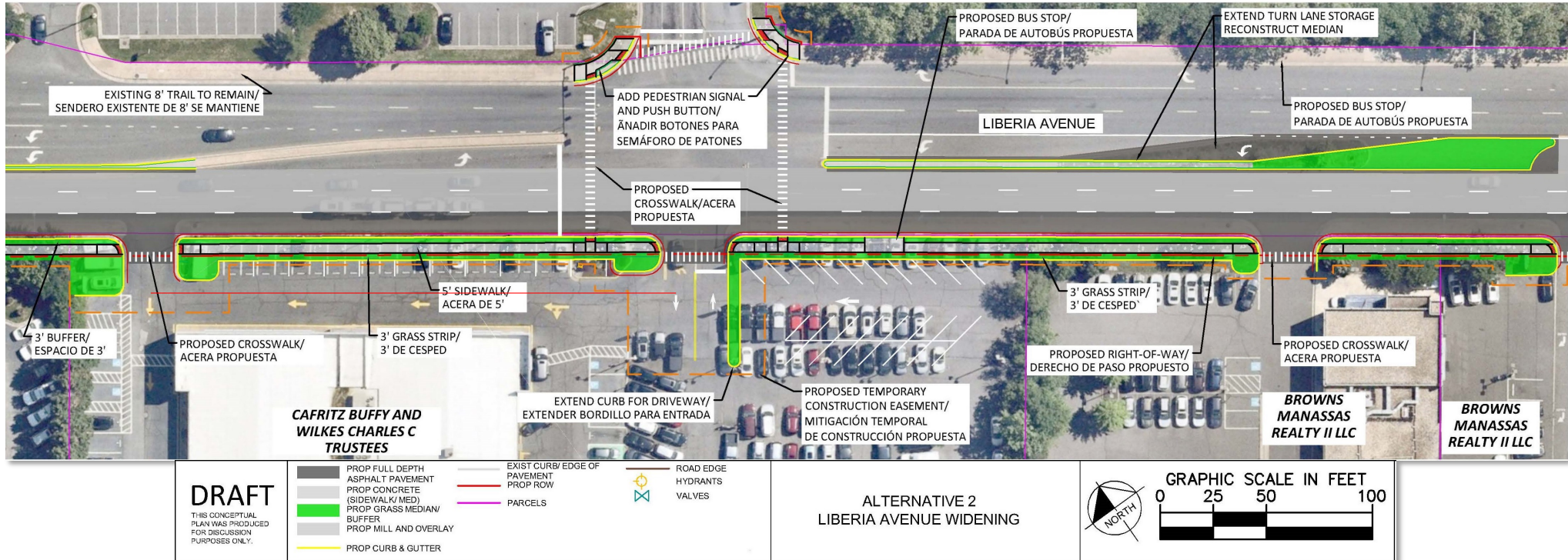
- ROAD EDGE
- HYDRANTS
- VALVES

ALTERNATIVE 2 LIBERIA AVENUE WIDENING



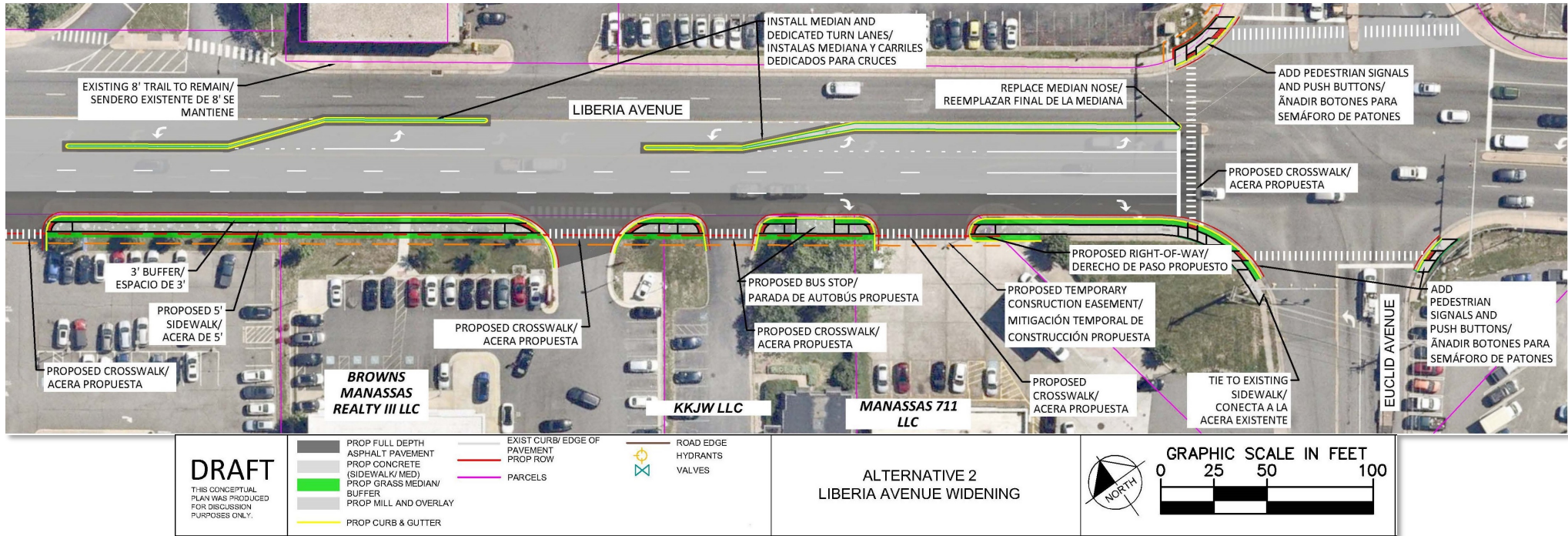
Liberia Ave (Route 28 to Brown's Subaru)

Alternative 2



Liberia Ave (Brown's Subaru to Euclid Ave)

Alternative 2



Project Funding and Schedule

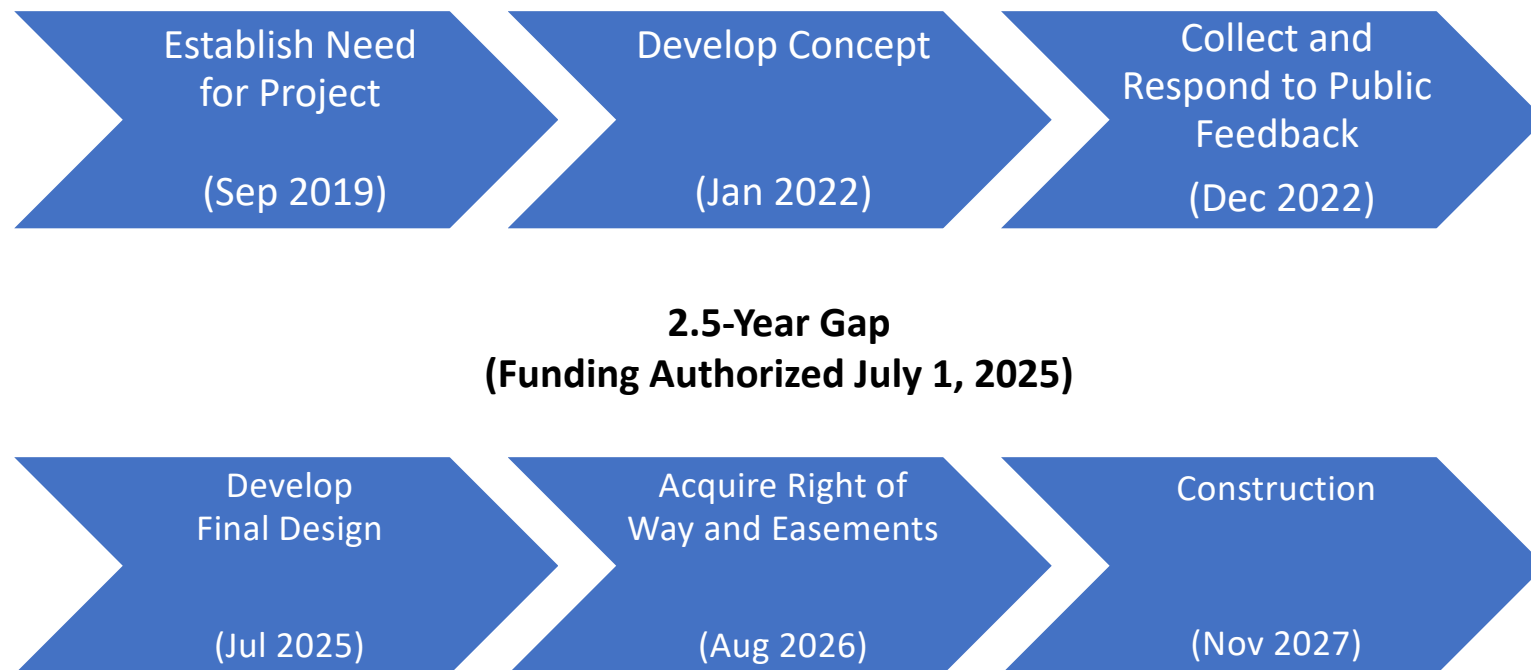


Funding

- Project Cost: \$8.9 million
- Funding Source: Northern Virginia Transportation Authority (NVTa) Regional Funds
- Design and Construction funded in FY26 – FY27



Schedule



How to comment?

Take the survey!

www.manassasva.gov/liberia3rdlane

Share Your Voice on the Liberia Ave. 3rd Lane Eastbound Plans

We Want Your Feedback!

The Liberia Ave. 3rd Lane Eastbound project will widen Liberia to three through-lanes in the eastbound direction between Route 28 and Euclid Ave.; extend existing Route 28 northbound left turn lane on Liberia Ave.; improve future bus stops and potential pull-off lanes; and improve sidewalks and crossings.

View two alternative plans:

[Alternative 1](#) Widening to the south with bidirectional center left-turn lane

[Alternative 2](#) Widening to the south with dedicated left-turn lanes

Which design do you prefer? *

- ☐ Alternative 1: (Widening to the south with bidirectional center left-turn lane)
- ☐ Alternative 2: (Widening to the south with dedicated left-turn lanes)
- ☐ A mix of both (tell us why)
- ☐ Neither (tell us why)

Do you support this project?

- ☐ Yes
- ☐ No

Do you have additional comments?

Type here...



Questions or Comments?

Brian Leckie

Transportation Planner II

703-257-8235

bleckie@manassasva.gov

John Keenan, PE, CFM

Senior Engineer

703-257-8447

jkeen@manassasva.gov

Project webpage:

www.manassasva.gov/liberia3rdlane

