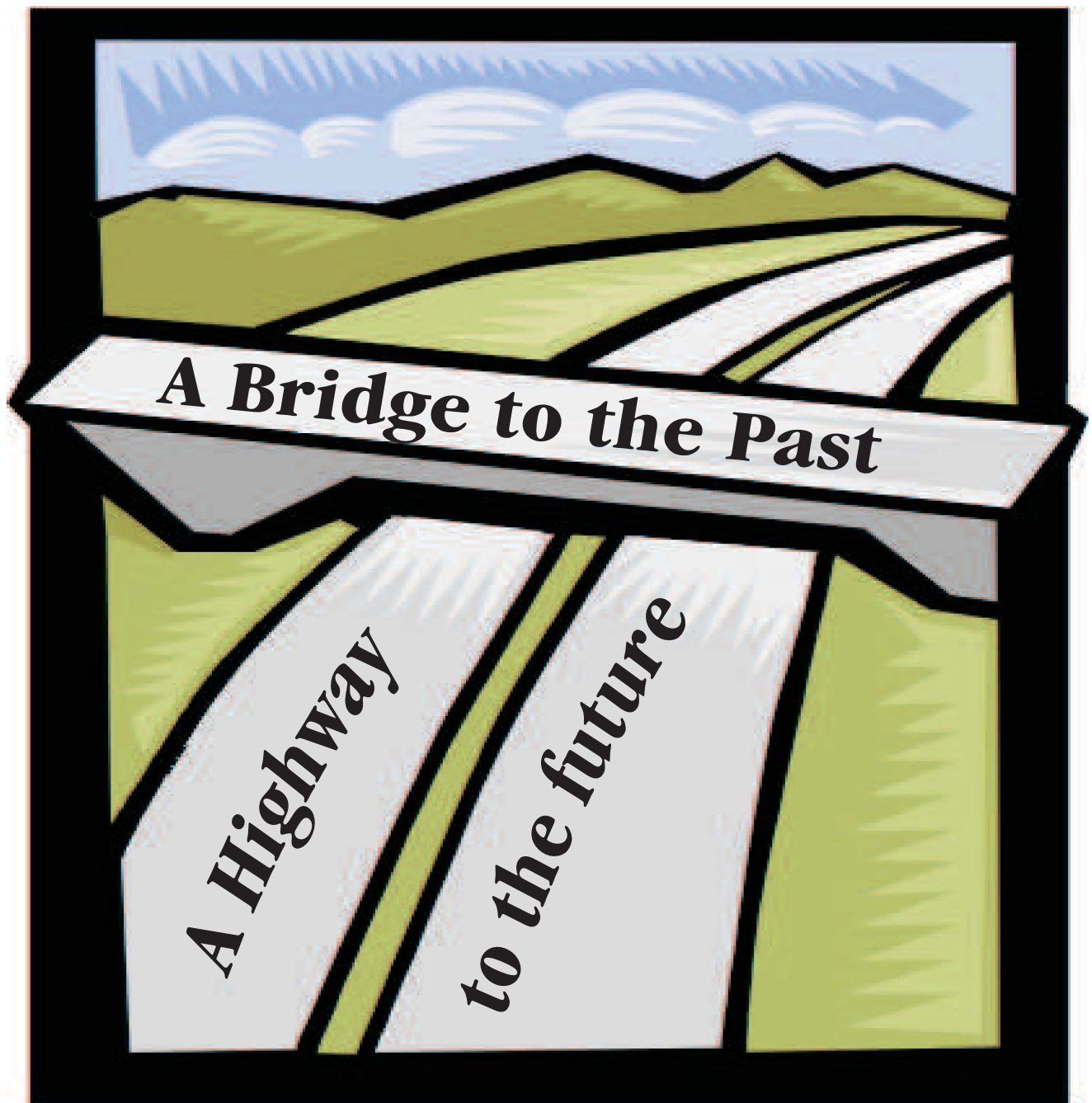


The Logan Library Annual Report



2006



Logan Library Annual Report 2006

Throughout 2006 the library has continued to refine and develop the collections and services it provides in order to ensure high quality services to the public. The on-going analysis of library services, by the library staff, is showing changes in how the public is using the library and of the public's changing expectations of what the collections and services provided by the library should be.

During 2006 the library board conducted a community survey to better understand the needs and wants of the public in regards to the library. This survey, along with the collection and analysis of the information the library staff performs on a regular basis, is very helpful as we determine the needs for the library for the coming year and for the next 5 to 10 years.

Summary of Statistics 2006:

Circulation:	765,256
Interlibrary loans:	7,745
Reference questions:	42,632
Online visits:	937,923
Visitors to library:	250,191
Items in collection:	179,293

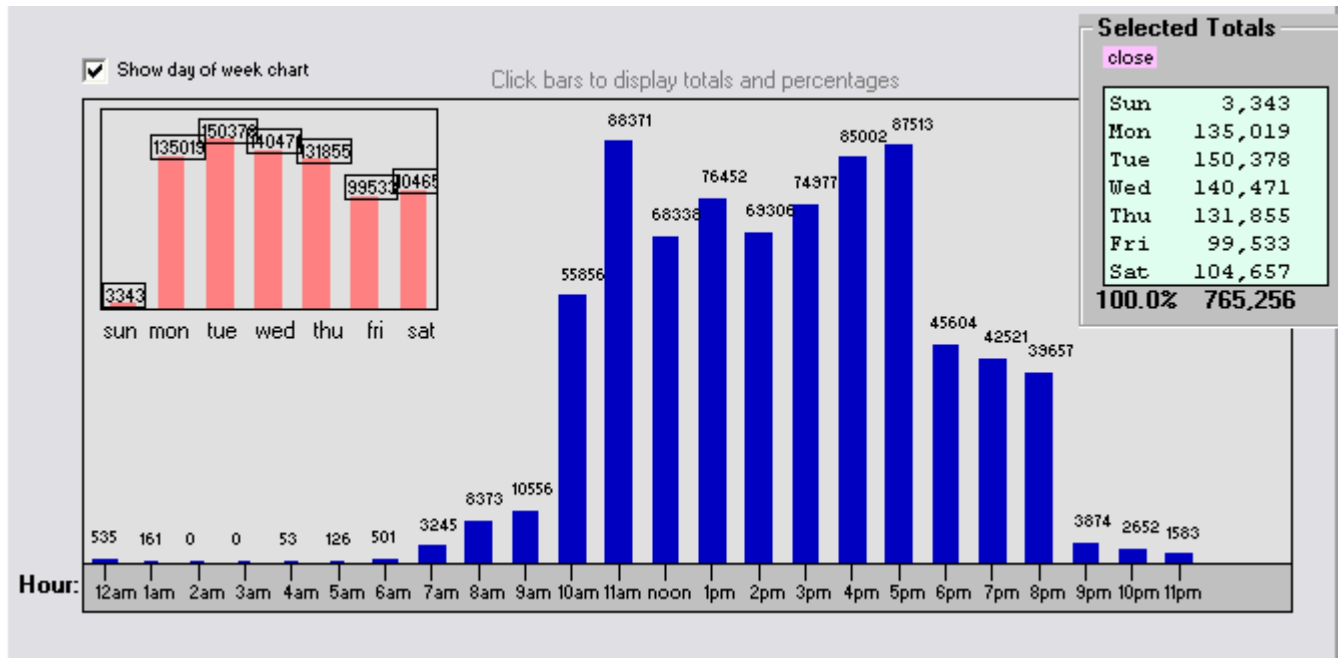
**Logan Library
Annual Report
2006**

Selected Performance Measures



2006 Circulation

Based on Charges in Workflows and Renewals in both Workflows and iBistro



2006 Transactions

5,625	AV -- Add Item (Vol/call#s,copies)
1,709	BY -- Bill User
630,862	CV -- Charge Item (No reserve/bookin
631,244	EV -- Discharge Item (Checkin non-bo
13,898	FV -- Remove Item (Title/call#/copy)
5,349	FY -- Remove User (Patron/staff)
10,687	FZ -- Remove Hold (Remove hold)
2,767	Ju -- Create Request (Patron request
2,304	JV -- Create Item (Title/call#/copy)
5,157	JY -- Create User (Patron or staff)
67,336	JZ -- Create Hold (Place a hold)
4	KV -- Duplicate Item
888	KY -- Duplicate User (Copy existing
244	OV -- Transfer Item (to another libr
87,086	PY -- Pay User (Paying user bill)
69,448	RV -- Renew Item (One non-reserve it
64,946	RY -- Renew User (All/some user char
597	Wi -- Use Gateway (Use gateway eleme

Doubleclick to show Data Codes

1,600,157 Transaction Codes

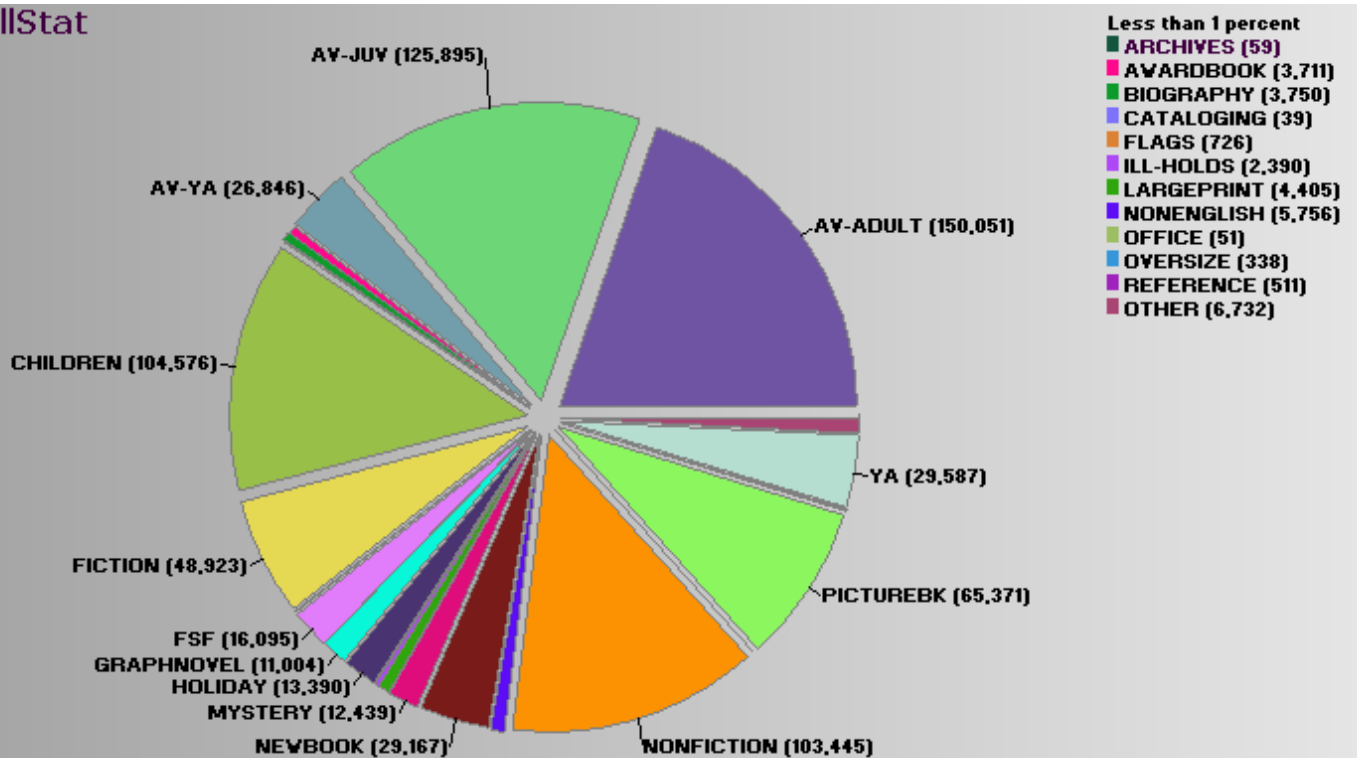
1,600,150 TOTAL Transactions



2006 Circulation

Based on Charges in Workflows and Renewals in both Workflows and iBistro

CallStat



Totals

File: C:\Documents and Settings\logancity\My Documents\DailyTransactions\stat\2006\2006.stat
 Dates: 1/1/2006 to 12/31/2006
 Codes: CV RV RY ; Transactions: 765,257

TOTAL by Home Location

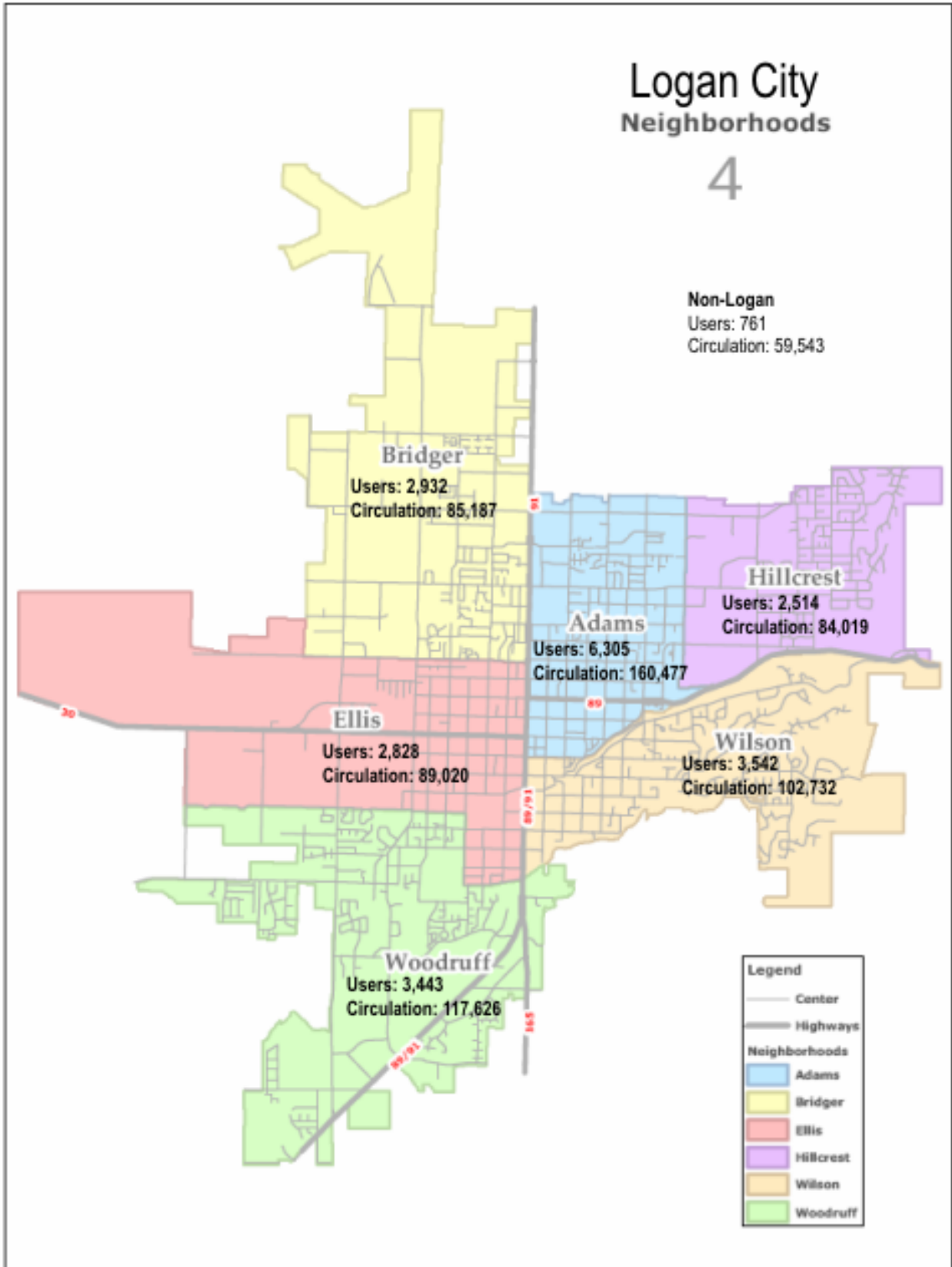
Total Circulation 765,257

All-765,257
CV: 630,863
RV: 69,448
RY: 64,946

CV: Total Charges
 RV: Total Inhouse Renewals
 RY: Total Renewals iBistro



Circulation by Neighborhood – 2006

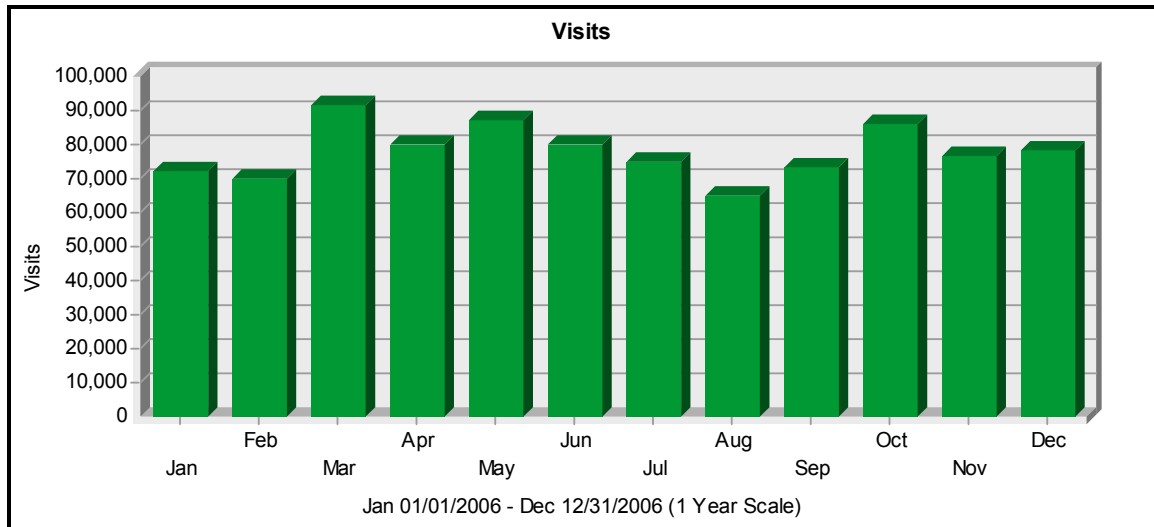




WebPage Usage Statistics - 2006

General Statistics

The Visits graph displays the overall number of visits to your Web site. The General Statistics table provides an overview of the activity for your Web site during the specified time frame.

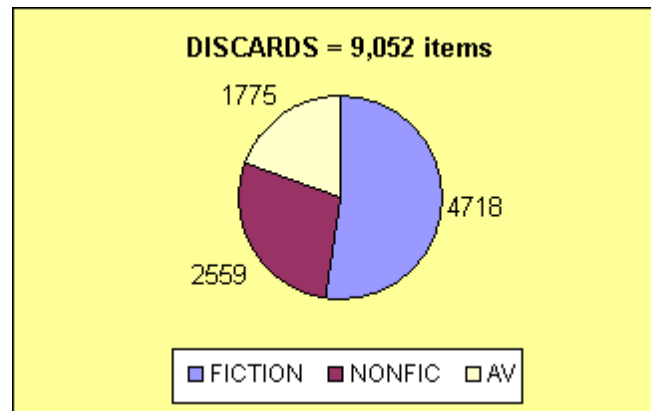
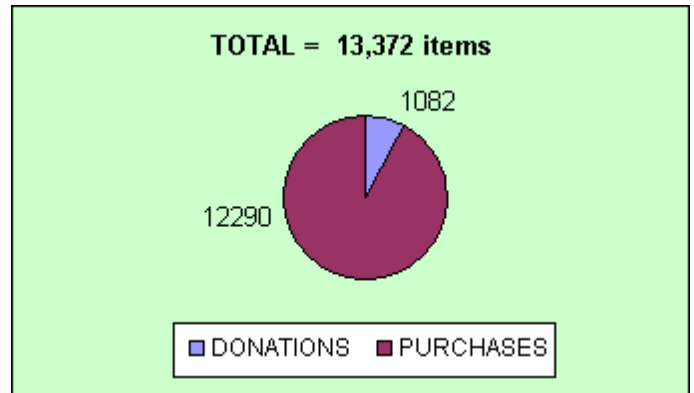
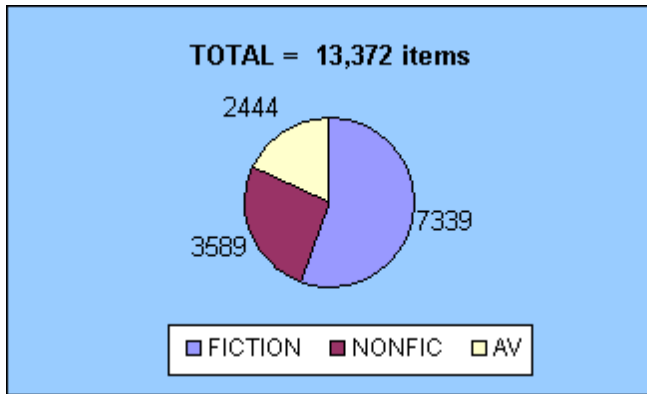
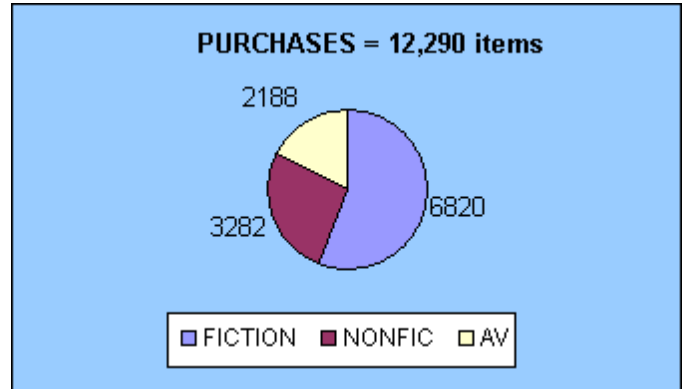
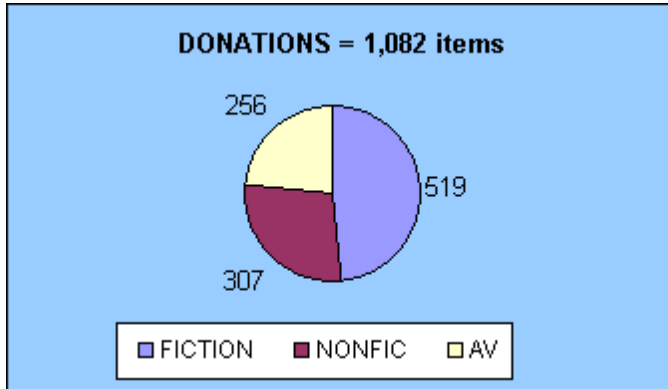


General Statistics - Report Range: 01/01/2006 00:00:00 - 12/31/2006 23:59:59		
Hits	Entire Site (Successful)	10,281,801
	Average per Day	28,169
	Home Page	826,373
Page Views	Page Views	4,579,917
	Average per Day	12,547
	Average per Unique Visitor	17
	Document Views	4,188,215
Visits	Visits	937,923
	Average per Day	2,569
	Average Visit Length	00:21:32
	Median Visit Length	00:00:01
	International Visits	8.30%
	Visits of Unknown Origin	10.59%
	Visits from United States	81.10%
	Visits Referred by Search Engines	225,590
	Visits from Spiders	327,568
Visitors	Unique Visitors	258,136
	Visitors Who Visited Once	220,521
	Visitors Who Visited More Than Once	37,615



Technical Processing Statistics

Acquisitions, discards, and total holdings



Added in 2006 8,121 titles 13,372 items

Items in collection = 179,293*

Titles in collection = 136,539*

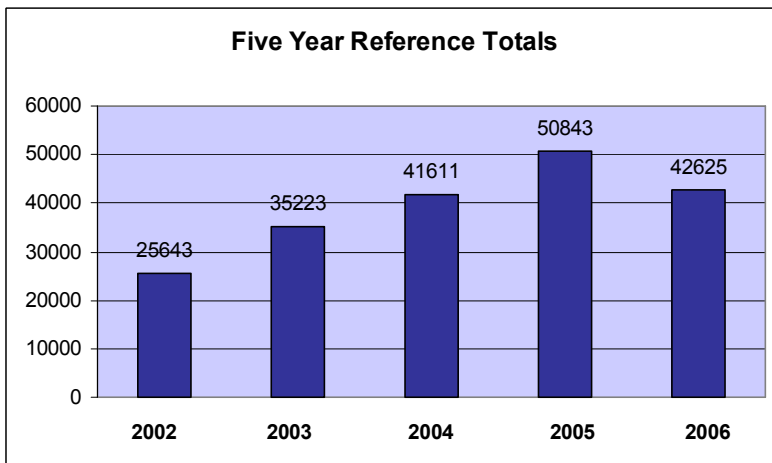
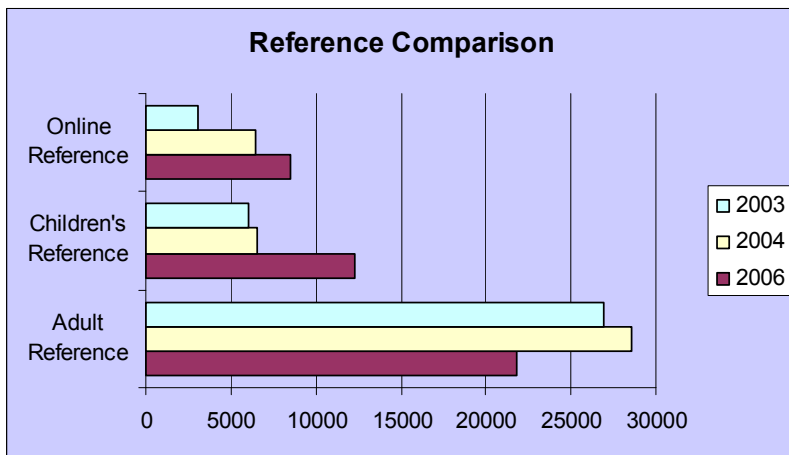
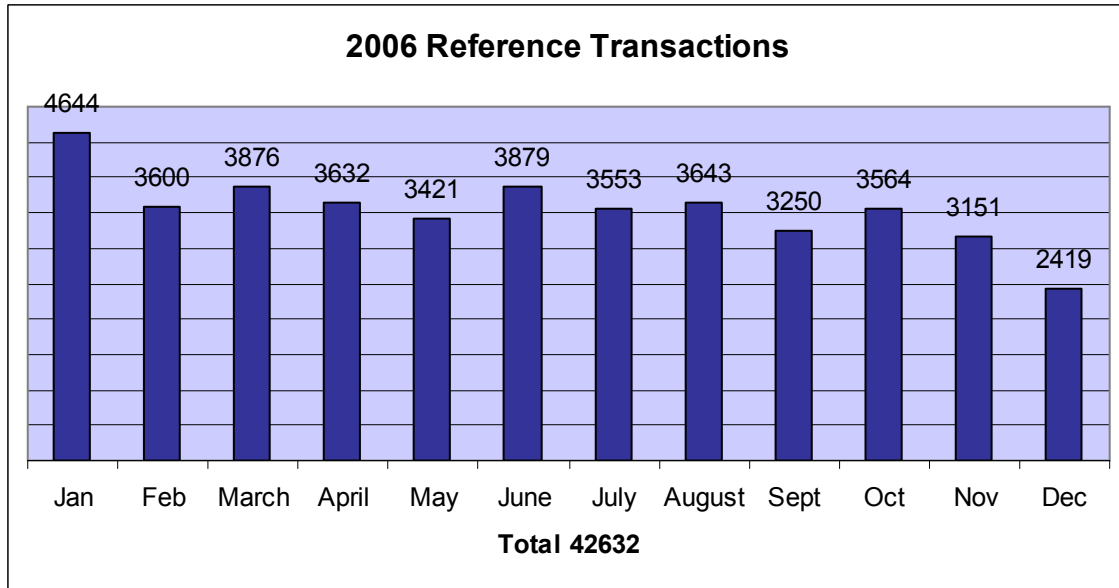
*includes 12,183 e-resources

Netlibrary = 10,740 eaudio books = 1,143

Total e-resources = 12,183

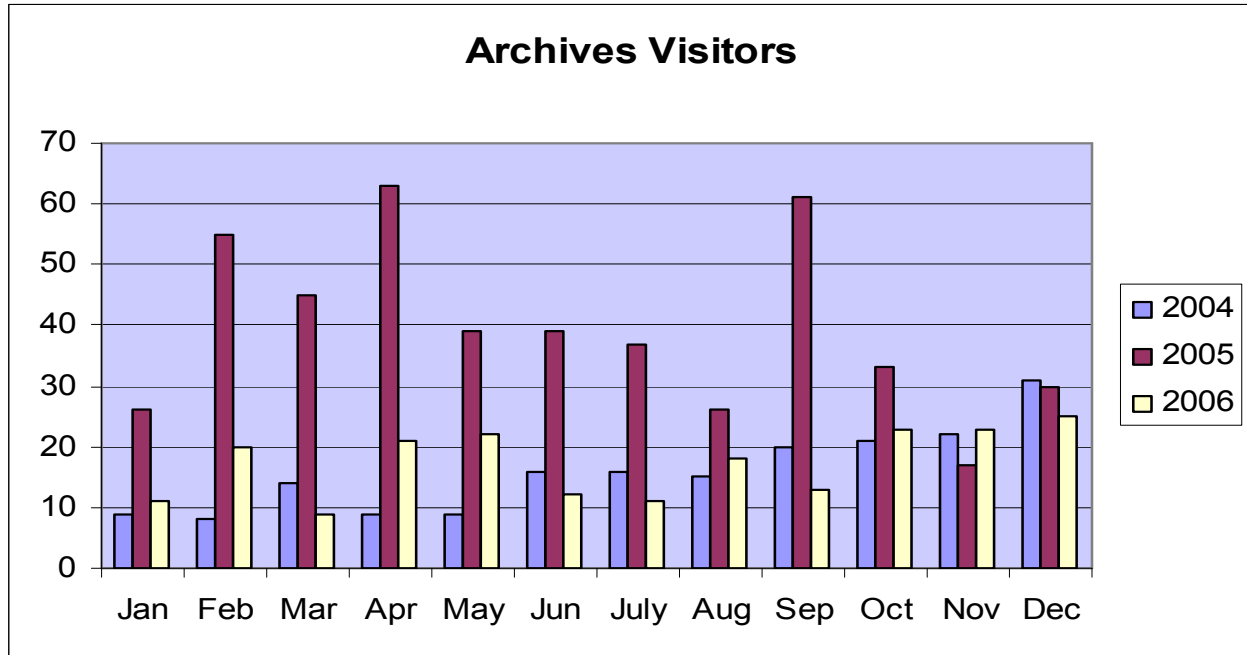


2006 Reference



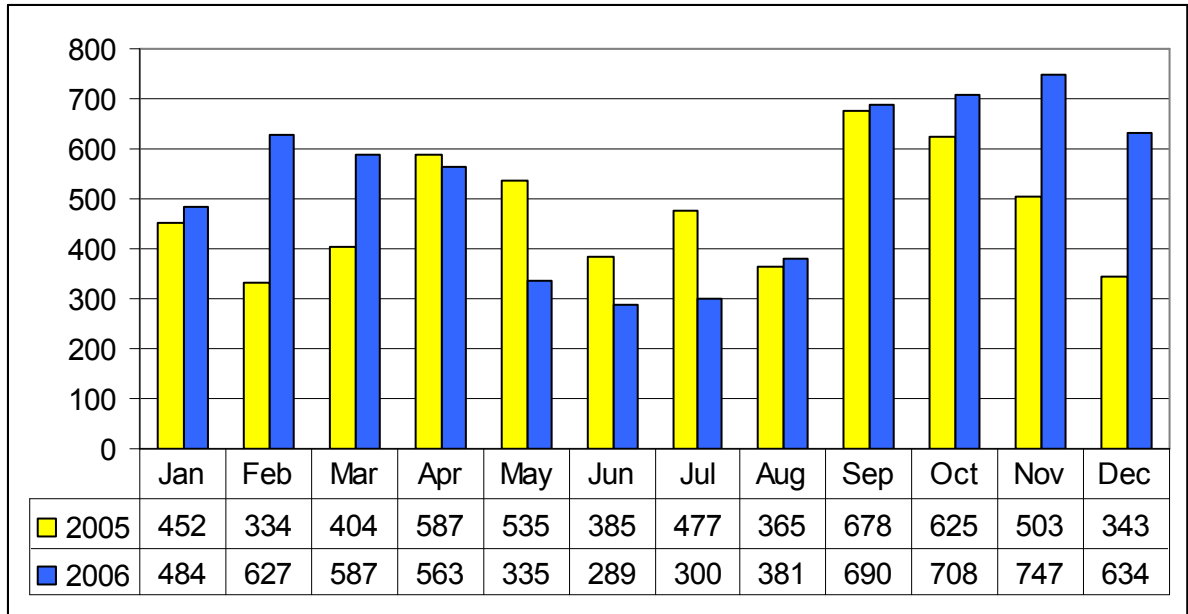


2006 Archives





Reference Database Usage



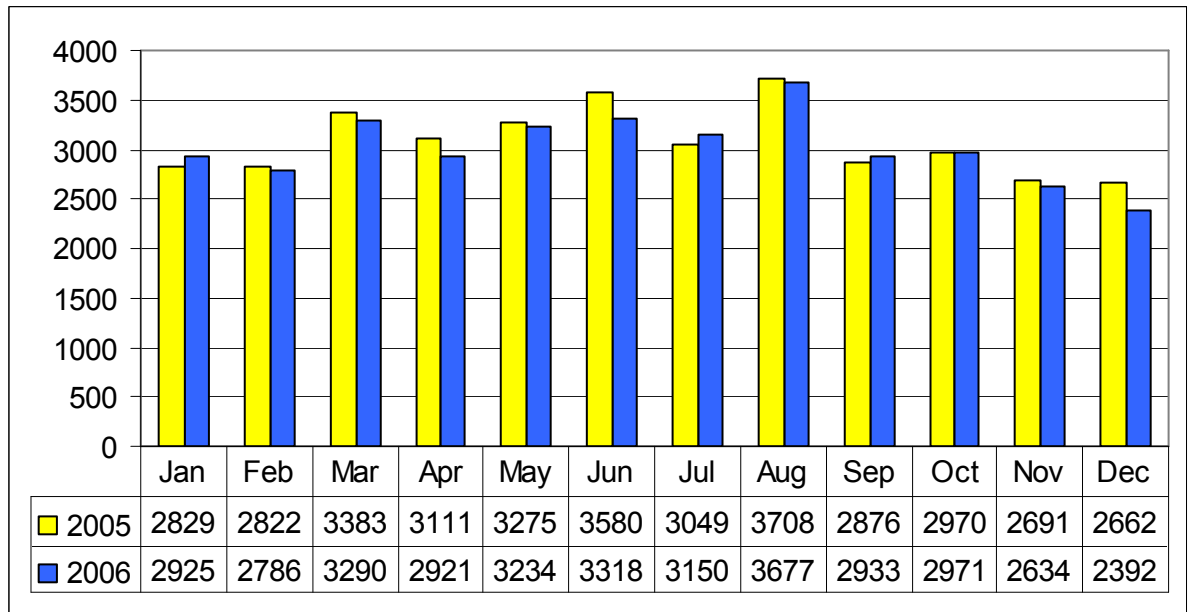
Total Usage

2005: 5688

2006: 6345



Number of Computer Reservations



Total Usage

2005: 38961

2006: 38237

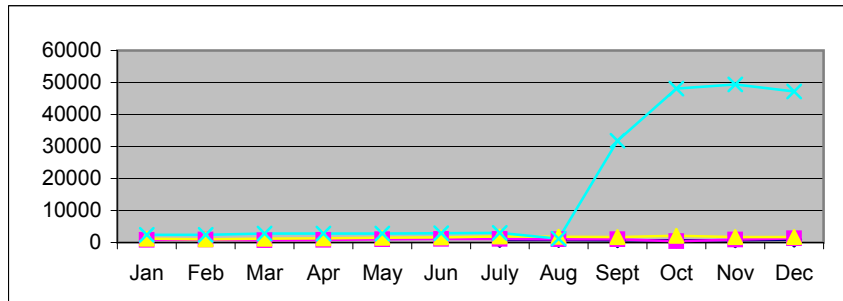


Community Calendar and Organizations

2006 Yearly Statistics

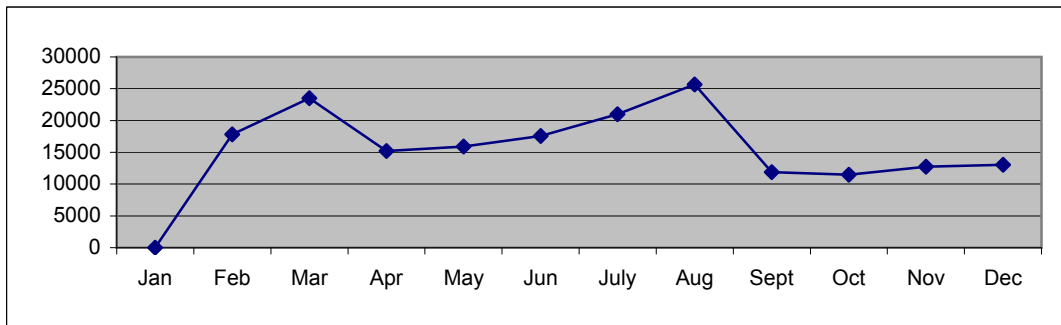
Community Calendar - Total # of monthly hits

	Jan	Feb	Mar	Apr	May	Jun	July	Aug	Sept	Oct	Nov	Dec	TOTAL
2003 Hits							801	754	668	692	692	906	4513
2004 Hits	841	872	742	850	1037	1057	1091	1049	1026	426	892	1319	11202
2005 Hits	1188	1009	1237	1261	1467	1604	1934	1771	1656	2114	1726	1742	18709
2006 Hits	2446	2363	2763	2754	2826	2925	2973	1186	31,785	48,073	49,441	47,167	196702



Community Organizations - Total # of monthly hits

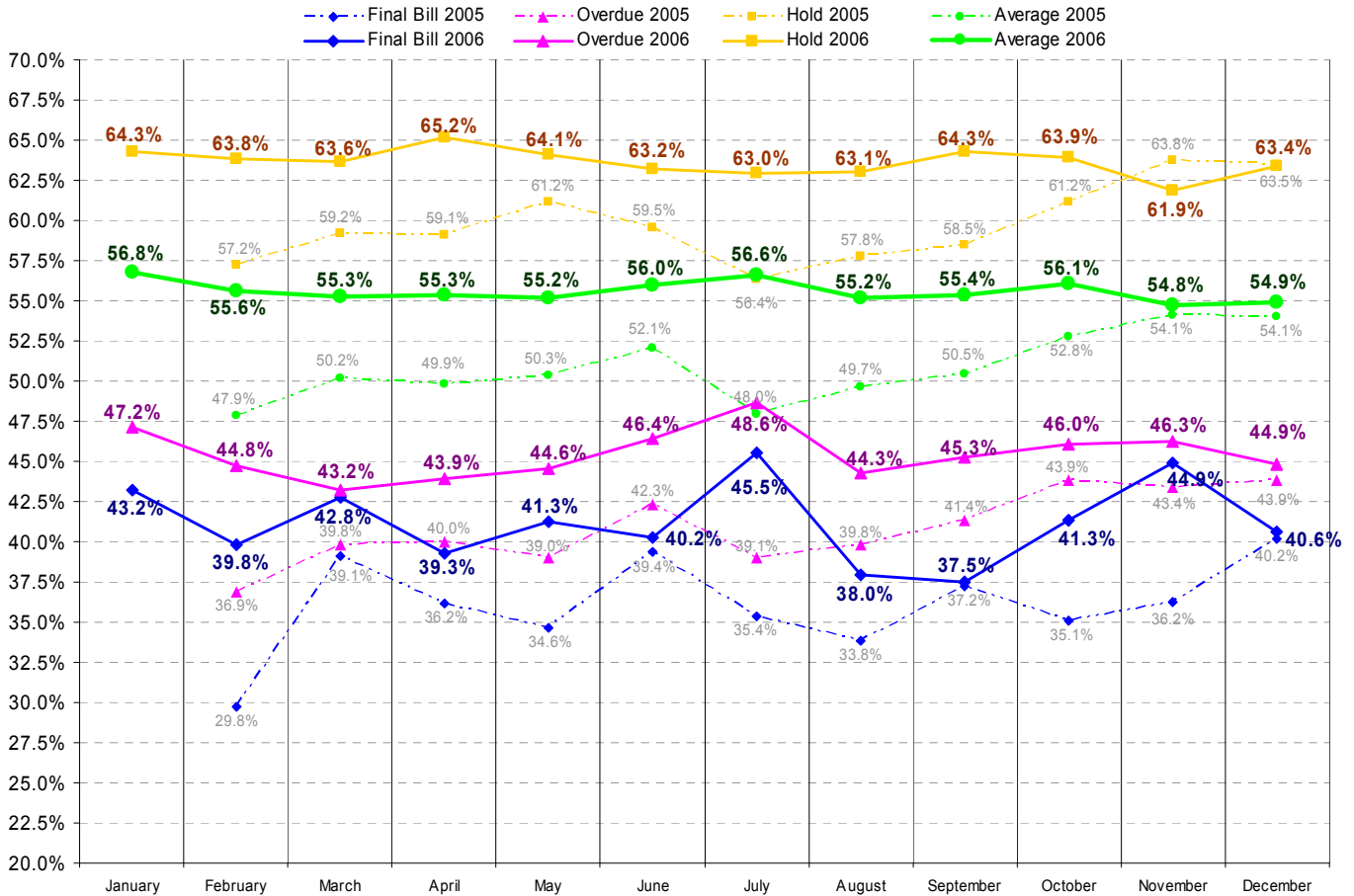
	Jan	Feb	Mar	Apr	May	Jun	July	Aug	Sept	Oct	Nov	Dec	TOTAL
2006 Hits		17,840	23,484	15,225	15,908	17,543	20,976	25,681	11,865	11,499	12,715	13,054	185790





**Email Notification
YEAR END REPORT 2006**

Percent of Notices Sent Via Email



Running Averages	Final Bill		Overdue		Hold		Average	
	2005	2006	2005	2006	2005	2006	2005	2006
	36.1%	41.2%	40.9%	45.4%	59.8%	63.6%	50.8%	55.6%
	38.6%		43.2%		61.7%		53.2%	

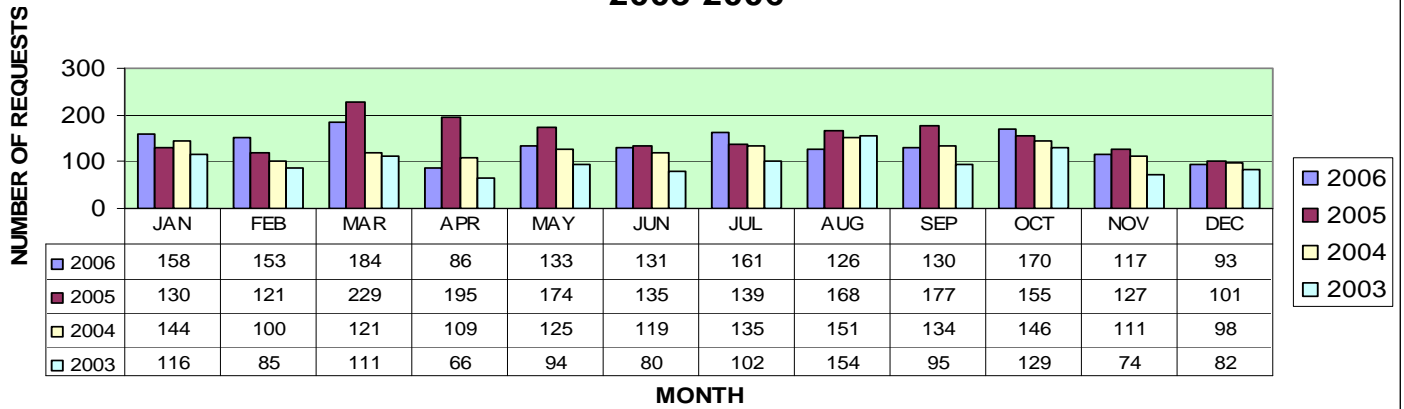
Month	Money Saved on Postage	
	2005	2006
January		\$1,028.38
February	\$849.80	\$979.02
March	\$1,082.55	\$1,137.38
April	\$996.10	\$1,031.56
May	\$999.60	\$1,083.36
June	\$1,088.85	\$1,053.02
July	\$970.90	\$1,070.78
August	\$1,064.70	\$1,168.83
September	\$1,022.70	\$1,006.03
October	\$1,020.25	\$1,152.18
November	\$1,040.20	\$1,028.23
December	\$966.35	\$994.93

Postage Saved	2005		2006	
		\$11,102.00		\$12,733.70
		\$23,835.70		

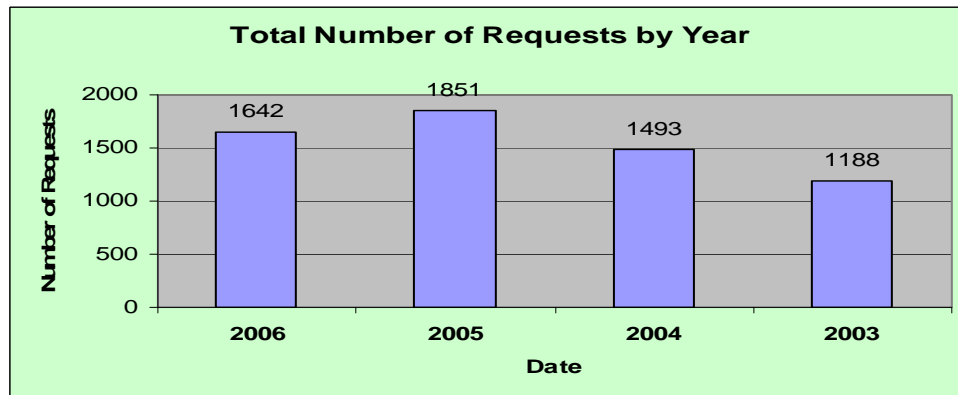
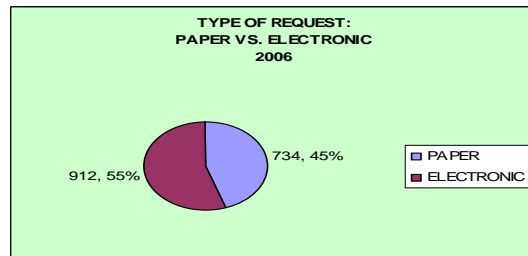
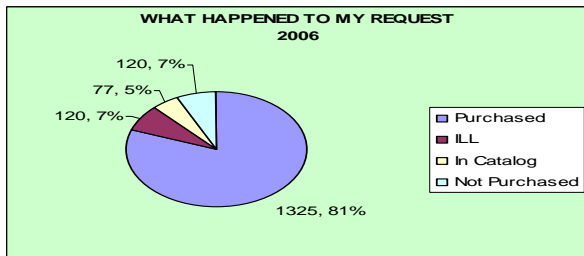
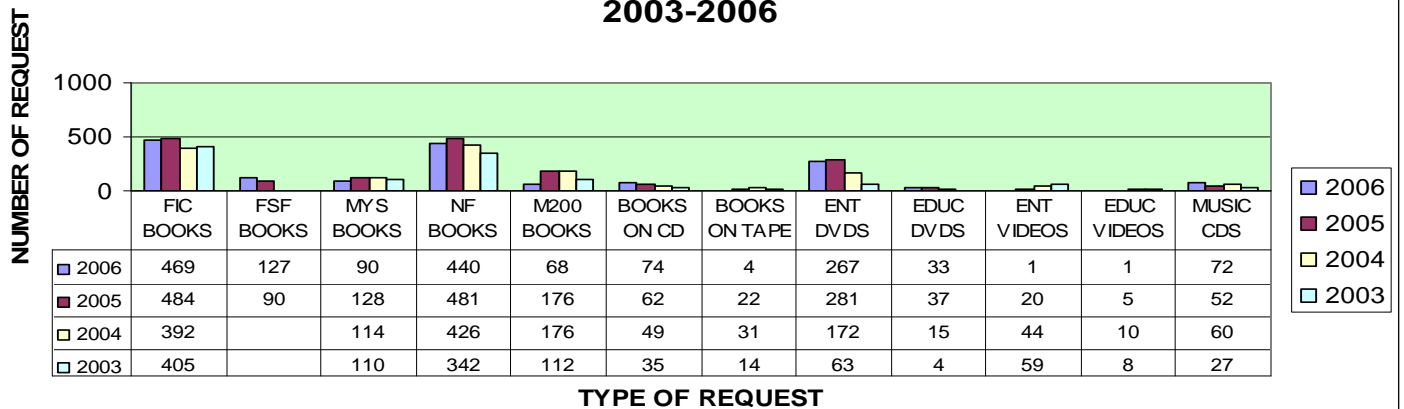


PRINT AND ELECTRONIC REQUESTS FOR TITLES TO BE PURCHASED FOR ADULTS

**NUMBER OF ADULT REQUESTS RECEIVED BY MONTH
2003-2006**



**NUMBER OF REQUESTS RECEIVED BY FORMAT AND GENRE
2003-2006**





Request statistics for Children's Collection 2006

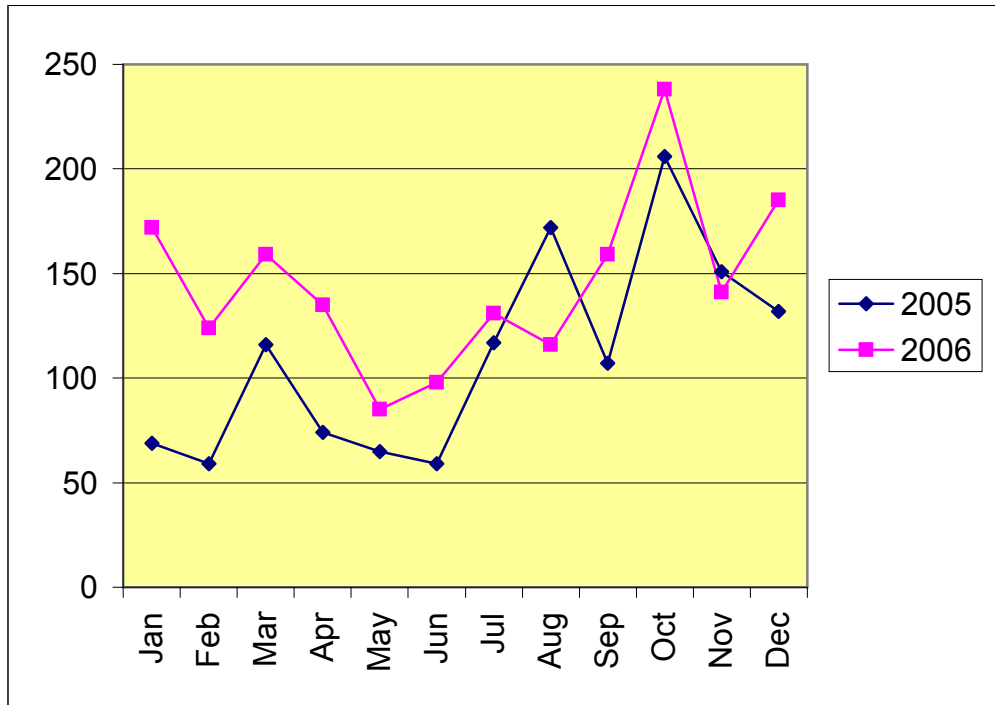
(requests to purchase new materials for the Children's book and audio-visual collections)
compared with statistics from 2005

2005

Jan	69
Feb	59
Mar	116
Apr	74
May	65
Jun	59
Jul	117
Aug	172
Sep	107
Oct	206
Nov	151
Dec	132

2006

Jan	172
Feb	124
Mar	159
Apr	135
May	85
Jun	98
Jul	131
Aug	116
Sep	159
Oct	238
Nov	141
Dec	185

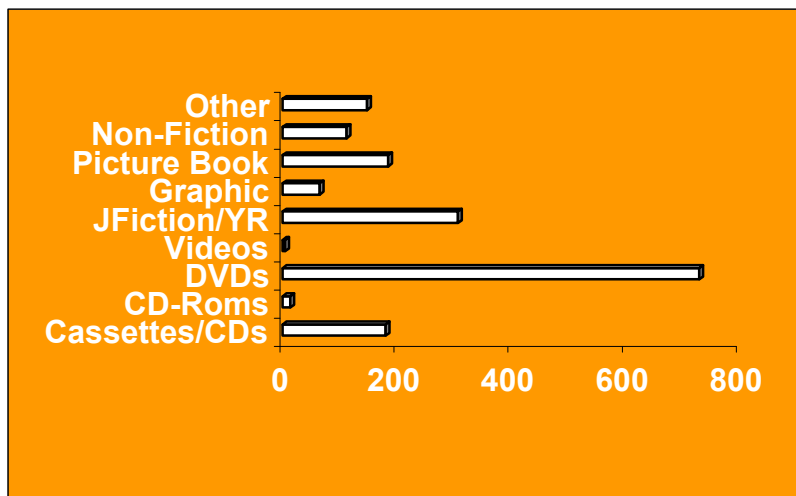


Requests Jan-Dec 2005: **1327**

Requests Jan-Dec 2006: **1743**

Children's Requests by type of material, January-December 2006

Cassettes/CDs	180
CD-Roms	13
DVDs	729
Videos	4
JFiction/YR	307
Graphic Novels	65
Picture Book	185
Non-Fiction	112
Other	148
(holiday, board books, non-English)	
Total	1743





Request Statistics for YA Collection 2006

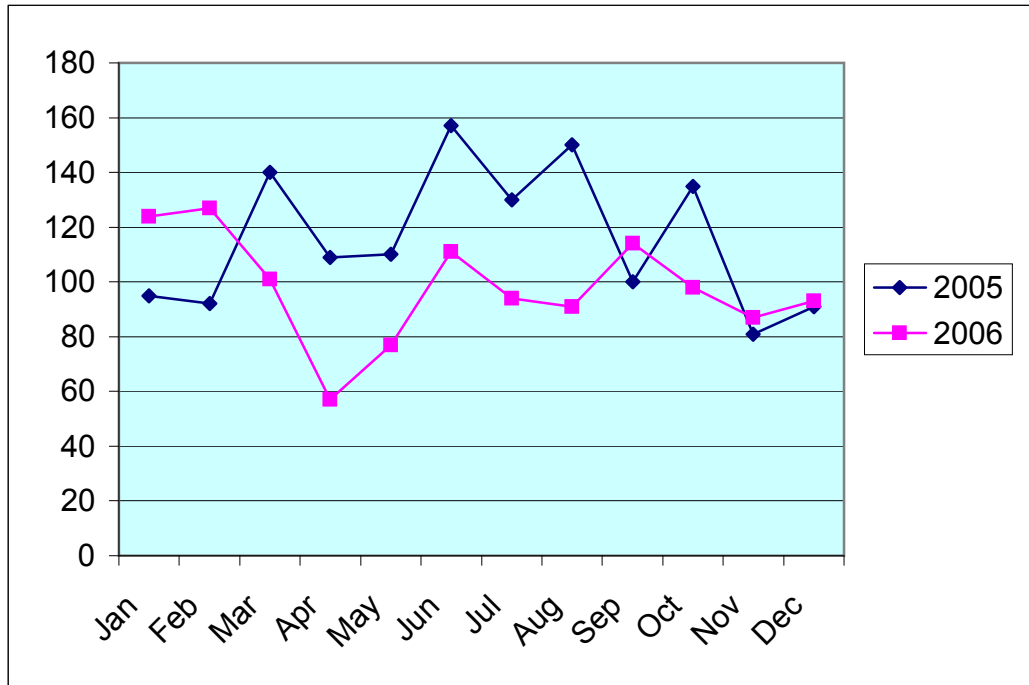
(requests to purchase new materials for the YA book and audio-visual collections)
compared with statistics from 2005

2005

Jan	95
Feb	92
Mar	140
Apr	109
May	110
Jun	157
Jul	130
Aug	150
Sep	100
Oct	135
Nov	81
Dec	91

2006

Jan	124
Feb	127
Mar	101
Apr	57
May	77
Jun	111
Jul	94
Aug	91
Sep	114
Oct	98
Nov	87
Dec	93

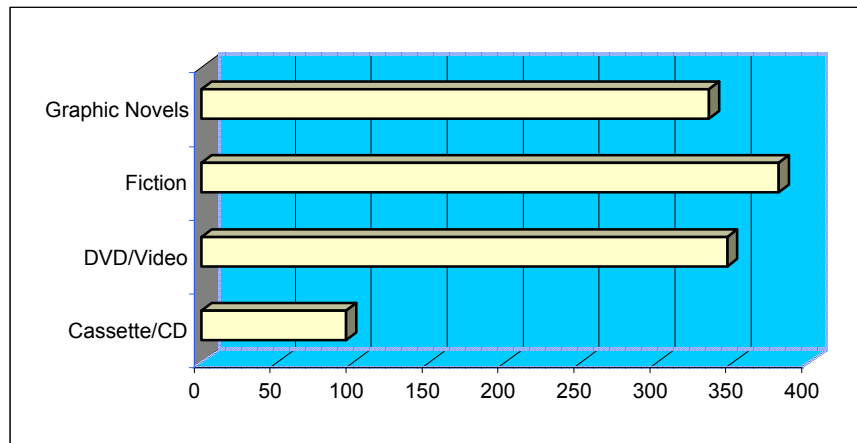


2005 requests, January - December 1392

2006 requests, January - December 1174

YA Requests by type of material, January-December 2006

Cassette/CD	95
DVD/Video	346
Fiction	380
Graphic Novels	334
Other	19
Total	1174



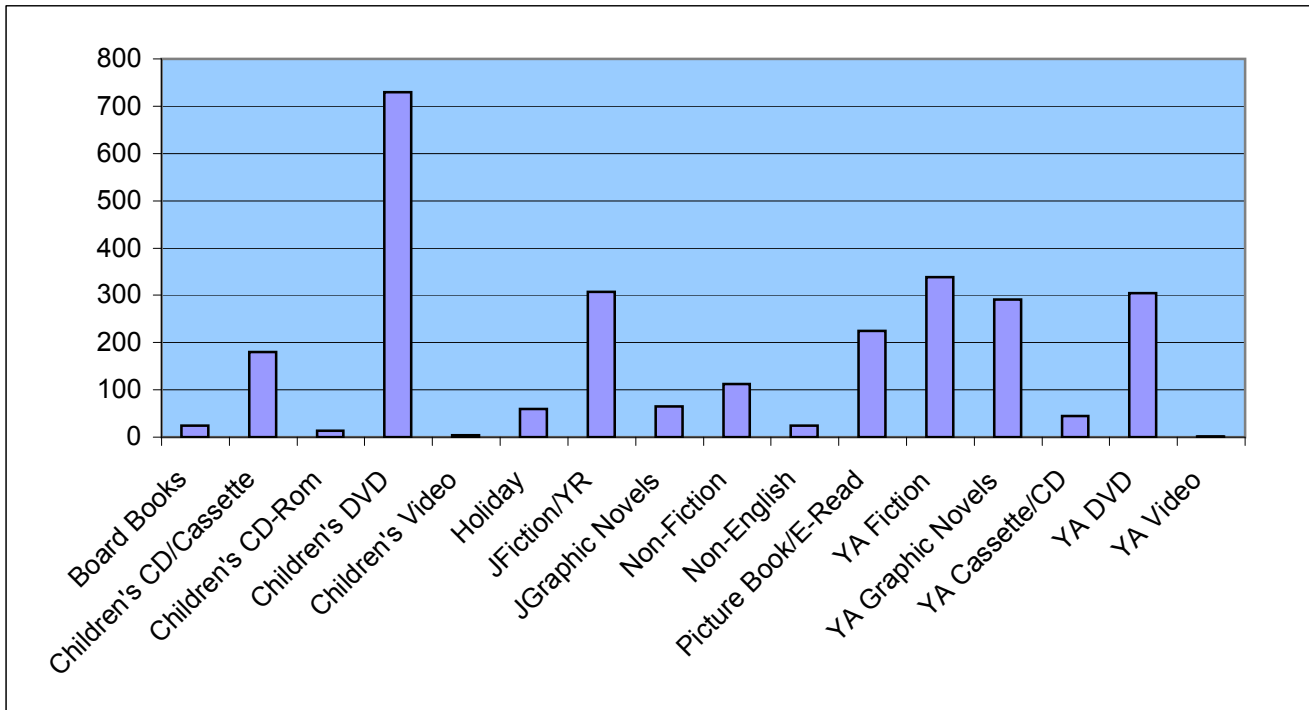


LOGAN LIBRARY

Performance Measure

Children's/Teen Requests January-December 2006

	Jan-June	July-Dec	Total
Board Books	15	9	24
Children's CD/Cassette	68	112	180
Children's CD-Rom	9	4	13
Children's DVD	362	367	729
Children's Video	0	4	4
Holiday	17	42	59
JFiction/YR	121	186	307
JGraphic Novels	26	39	65
Non-Fiction	65	47	112
Non-English	12	13	25
Picture Book/E-Read	84	141	225
YA Fiction	129	210	339
YA Graphic Novels	126	165	291
YA Cassette/CD	25	20	45
YA DVD	139	165	304
YA Video	2	0	2
Total Requests:	1200	1524	2724



We also had 309 requests for graphic novels which were added to the adult collection.

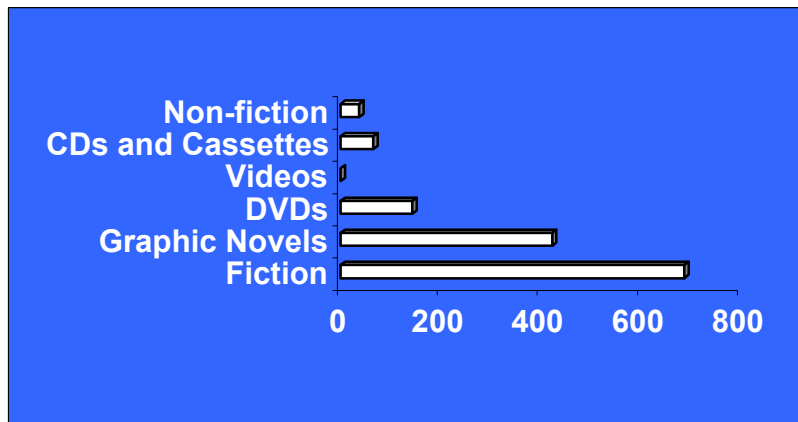
Grand total of requests for 2006: 3033



LOGAN LIBRARY
Performance Measure

Materials Purchased for the YA Collection, January-December 2006

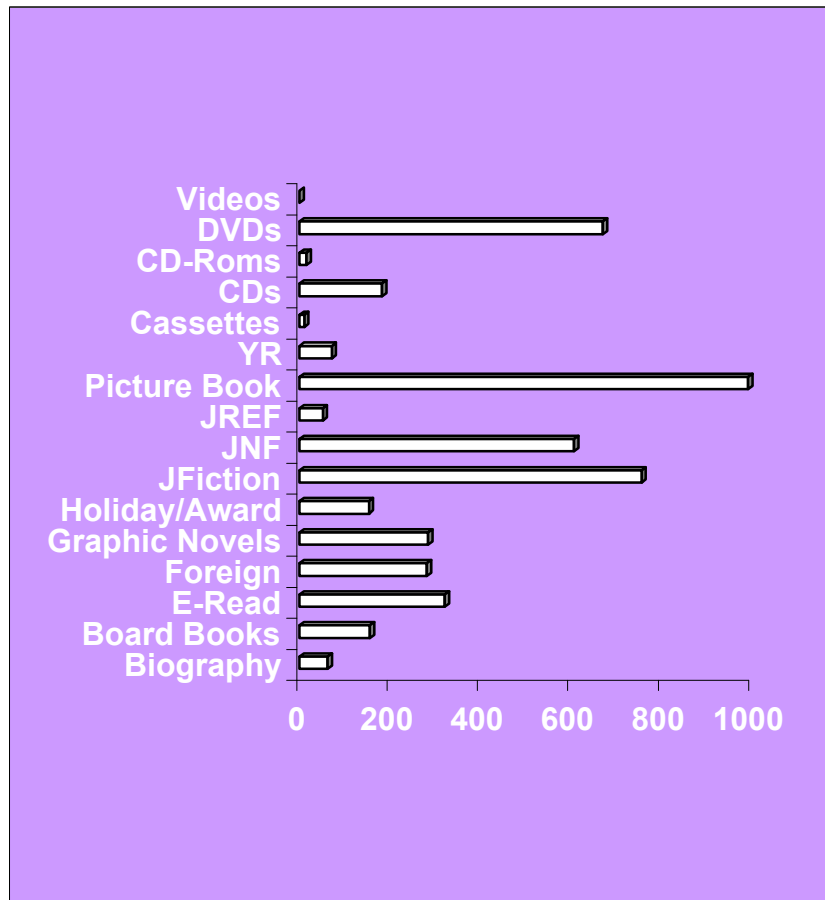
Fiction	687
Graphic Novels	423
DVDs	144
Videos	0
CDs and Cassettes	66
Non-fiction	38



Total items purchased: 1358

Materials Purchased for the Children's Collection, January-December 2006

Biography	62
Board Books	155
E-Read	321
Foreign Language	281
Graphic Novels	284
Holiday/Award	153
JFiction	756
JNF	607
JREF	51
Picture Book	992
YR	71
Cassettes	10
CDs	182
CD-Roms	15
DVDs	671
Videos	0



Total items purchased: 4611

Total for both collections: 5969

Includes items purchased with grants and donations



2006-Yearly Report

Everton Collection Statistics

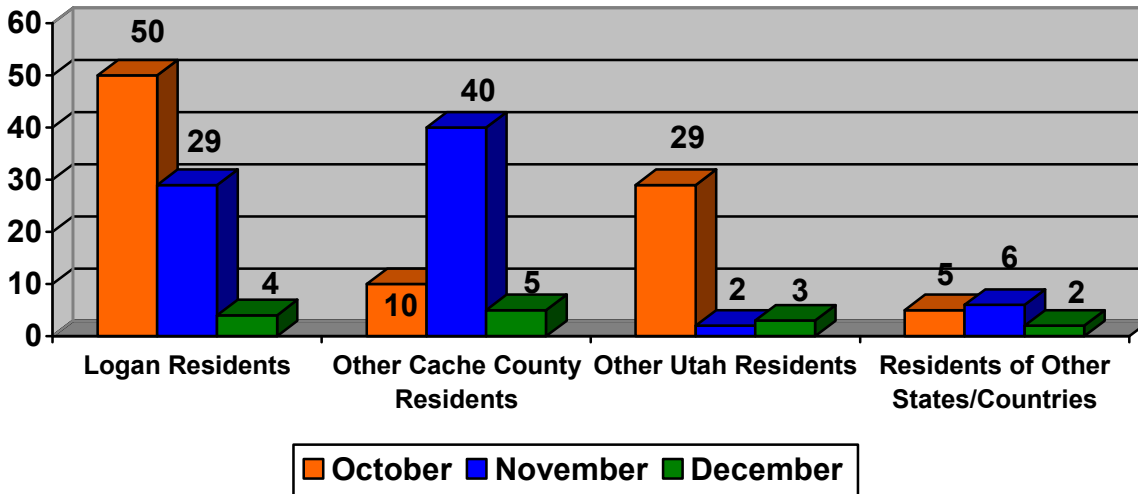
The Everton Genealogy Collection opened to the public on October 10, 2006.

Volunteers:

- 353.75 hours of volunteer time worked.
- As we were open 48 days over the past three months, this gives us about 7.3 hours of volunteer time each day that we were open.

Patrons

- 192 patrons over the past three months
- As we were open 48 days, this comes to exactly 4 patrons each day.
- Following pie graph shows the patrons' place of residence



Major Projects in 2006

- Organizing and cleaning the collection to prepare for opening.
The donation has needed to be turned from a collection of books into a library.
- Recruiting a team of responsible volunteers.
There are currently 11 volunteers.
- Updating and correcting the searchable Title Database.
The Title Database has served over the past three months as a temporary catalog for the collection for our patrons. Items are being added or edited constantly in the database.
- Shelf-reading the collection.
This includes examining each item in the collection and comparing it to a list of items that came with the donation. Over 21,000 items have now been shelf-read.

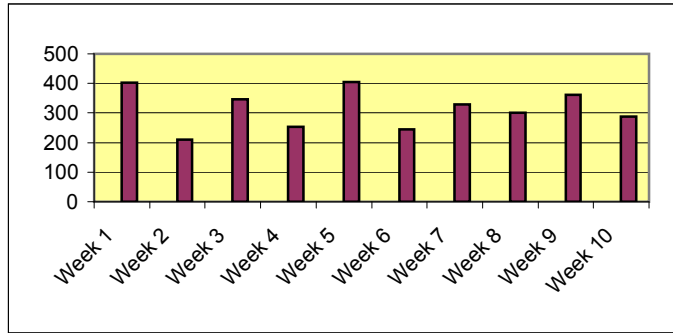
Summer Reading Program 2006 - Statistics

Enrollment: 1952 children

Last year's enrollment: 2203

Number of Reading Records turned in:

Week 1	402
Week 2	210
Week 3	347
Week 4	254
Week 5	405
Week 6	244
Week 7	328
Week 8	301
Week 9	361
Week 10	287
After Week 10	16



Total: 3155 Average of 315/week

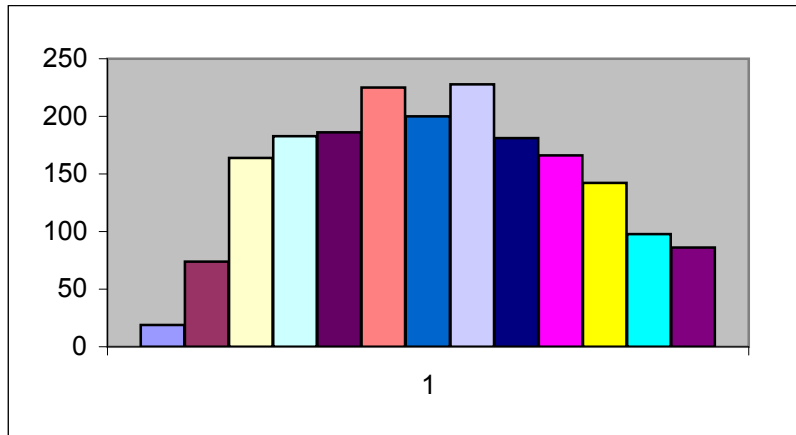
This represents 883,400 minutes of reading time, equaling 14723 hours or 614 24-hour days

(Last year: 3437 in 10 weeks - average of 343.7/week, 668 days total)

Number of participants who turned in at least one reading record: 1249 (66%)

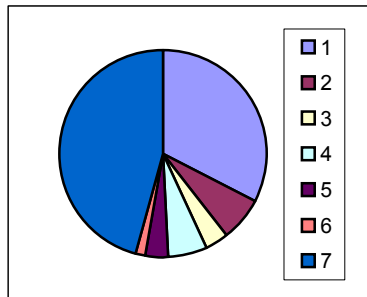
Breakdown by age:

0	19
1	74
2	164
3	183
4	186
5	225
6	200
7	228
8	181
9	166
10	142
11	98
12	86



Schools Attended:

1. Preschool-age children	635
2. County Schools	136
3. Home School	69
4. Private or Charter Schools	122
5. Edith Bowen	68
6. Summer Visitors	25
7. Logan City Schools	897

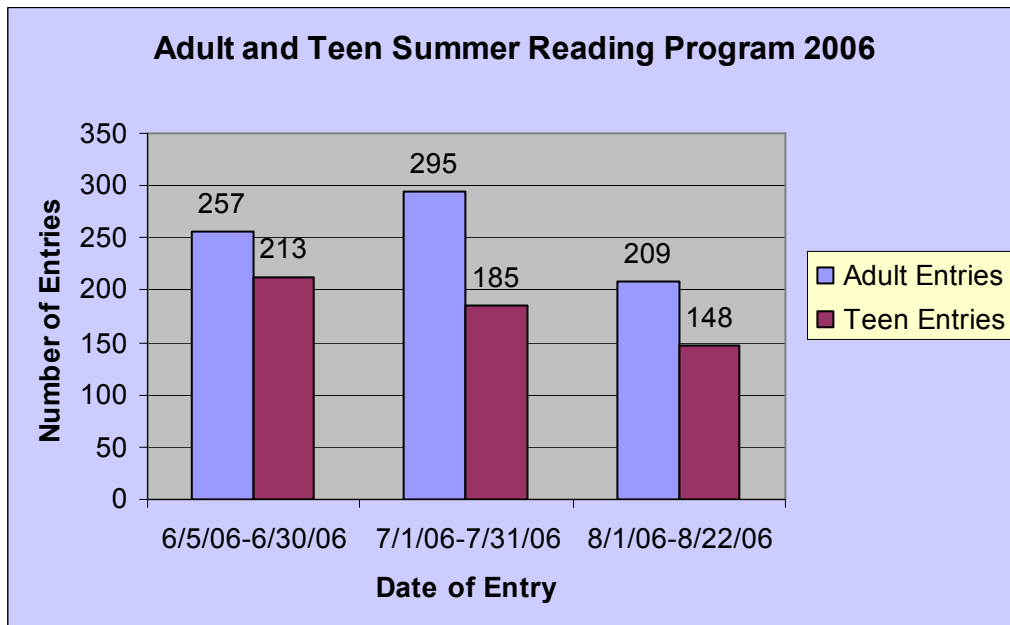
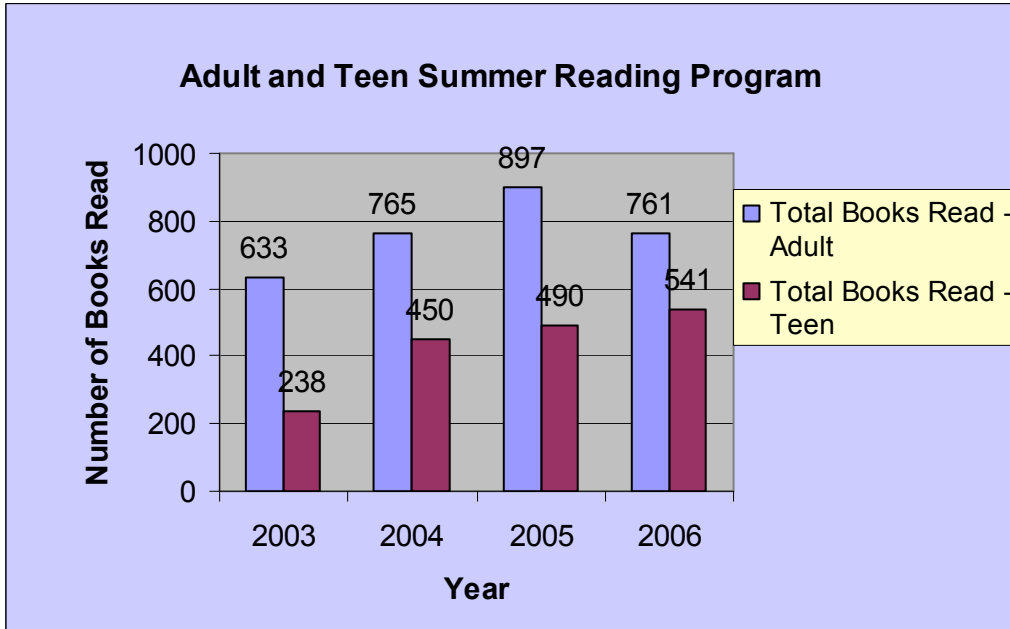


Logan City Schools:

Adams	106
Bridger	104
Ellis	111
Hillcrest	154
Wilson	127
Woodruff	120
MLMS	155



ADULT AND TEEN SUMMER READING PROGRAM



LOGAN LIBRARY BOARD 2006

Chair
Ann Herron
Mark Fjeldsted
Blythe Ahlstrom
Susan Jaggi
Mary Anderson
Karren Pyfer
Herm Olsen

LOGAN LIBRARY STAFF

Director Ronald Jenkins

Senior Librarian Janet Fiesinger

Librarians
Karen Clark
Kara Huggard
Melanie Liechty
Patricia Record
Becky Smith

Associate Librarians
Jerry Anderson
Jason Cornelius
Michelle Olsen

Library Technical Assistants
Ann Calvert
Kelsie Congdon
Lindsey Cannon
Laura Dial
Katrina Farrow
Allison Hancey
Katie Jaggi
Marie Kangas
Bron Logan
Julie Miller
Debbie Ogilvie
Sarah Pincock
Barbara Price
Stefanie Rieben

Library Pages
Anna Baker
Shari Lundstrom
Jodi Miller



THE LOGAN LIBRARY

255 North Main, Logan, Utah 84321 (435) 716-9132

Hours: Mon. - Thurs.: 10:00 a.m. - 9:00 p.m.

Fri. - Sat.: 10:00 a.m. - 6:00 p.m.

<http://library.loganutah.org>