

# LOGAN PARKS AND RECREATION

We Create Quality Life-Long Experiences For All



FALL 2019 AND WINTER 2020

## LEISURE GUIDE



[pr.loganutah.org](http://pr.loganutah.org)

## CITY OF LOGAN

Mayor	Holly H. Daines
Council Member	Amy Z. Anderson
Council Member	Jess W. Bradfield
Council Member	Tom Jensen
Council Member	Herm Olsen
Council Member	Jeannie F. Simmonds

## FALL 2019 AND WINTER 2020

Every effort is made to ensure the accuracy of program information; however, errors may occur. Please call to verify information. All programs are subject to change without notice.

If you need special accommodations for any of our activities, please notify staff at time of registration.

## MANAGEMENT STAFF

Director	Russ Akina
Cemetery Sexton	Justin Allen
Golf Professional	Jeff John
Golf Course Superintendent	Randy Oldham
Parks Superintendent	Ed Stephens
Recreation Manager	Dan Blakely

## PARKS AND RECREATION DEPARTMENT

The mission of the Logan Parks and Recreation Department is to sustain and enhance the quality of life for the citizens of Logan.

195 South 100 West  
Logan, UT 84321  
(435) 716-9250 | Fax: (435) 716-9254  
pr.loganutah.org

The City of Logan does not discriminate on the basis of race, color, religion, gender, age, sexual orientation, disability, national or ethnic origin, veteran status, or any other basis prohibited by law in its employment, programs, and activities.



## CONTENTS

## On the Cover: Trapper Park—River View

3	LOGAN AQUATIC CENTER CLOSING SEPTEMBER 2
4	LEARN-TO-SWIM LESSONS DISCOUNT NIGHT
5	AQUATIC FITNESS FIT FOR LIFE, HYDROFIT
6	AQUATIC CENTER HIGHLIGHT SHOWCASE
7	LOGAN RIVER GOLF COURSE GOLF CAMP
8	GOLF COURSE HIGHLIGHT HAPPENINGS
9	GOLF COURSE HIGHLIGHT UCAIR GRANT
10	LOGAN CITY PARKS SYSTEM PARK INFORMATION
11	PARKS DIRECTORY ADDRESSES, AMENITIES
12	PARKS HIGHLIGHT DOG FRIENDLY PARKS PILOT
13	LOGAN CITY TRAIL GUIDE MAP, TRAIL INFO
14	PRIDE IN OUR WORK PROJECTS UPDATE
15	PRIDE IN OUR WORK PROJECTS UPDATE
16	LOGAN COMMUNITY RECREATION CENTER
17	RECREATION CENTER RENTAL FEE SCHEDULE
18	ADULTS STEP IT UP, TWO PITCH SOFTBALL
19	ADULTS HEALTH SEMINAR FOR ACTIVE SENIORS
20	ADULTS 3 ON 3 BASKETBALL, FALL BASKETBALL
21	YOUTH KIDS FITNESS CLUB, CO-ED INDOOR SOCCER
22	YOUTH FLAG FOOTBALL, JR. JAZZ BASKETBALL
23	RECREATION HIGHLIGHT NEW REUNION KITS
24	MEDIA RELEASE, RISK STATEMENT, REFUNDS
25	REGISTRATION WALK IN, MAIL IN, FAX IN
26	GROUP FITNESS AEROBICS SCHEDULE
27	LOGAN CITY SKATE PARK AMENITIES, RULES
28	ZOOTAH HOURS, MEMBERSHIP FEES, MISSION
29	ZOO HIGHLIGHT QUALITY TIME WITH FAMILY
30	FREQUENTLY ASKED QUESTIONS
31	FACILITIES SPECIAL EVENT INFORMATION
32	LOGAN CITY CEMETERY HOURS, FEES
33	CEMETERY HIGHLIGHT INTERNMENT
34	VOLUNTEER PROJECTS HIGHLIGHT THANK YOU
35	VOLUNTEER APPRECIATION POOL PARTY
36	ADMINISTRATION HIGHLIGHT FALL CHALLENGE
37	RAPZ TAX PROJECTS UPDATE
38	PARK PULSE AMERICAN'S TOP OUTDOOR ACTIVITIES
39	PARK PULSE NRPA ASKED THE PUBLIC
40	THANK YOU SQUARE ONE PRINTING



Welcome



Leisure Pool



Covered Pavilion

# LOGAN AQUATIC CENTER

2019 SUMMER SEASON  
ENDS SEPTEMBER 2

FOR MORE INFORMATION ABOUT FACILITIES OR PROGRAMS VISIT OR CALL  
451 SOUTH 500 WEST, LOGAN, UTAH 84321 • (435) 716-9280

Recreation Manager—Dan Blakely • [pr.loganutah.org](http://pr.loganutah.org)

## FACILITIES—HOURS—FEES

SMOKING ON THE FACILITY GROUNDS IS PROHIBITED  
INCLUDING THE PARKING AREA

### AVAILABLE PROGRAMS AND AMENITIES

- Active Senior Adult Fit for Life
- Adaptive Aquatics
- Adjacent Park
- Concessions
- Covered Pavilion
- Diving Well
- Family Discount Night
- Lap Pool/Swimming
- Learn-to-Swim Lessons
- Leisure Pool
- Life Jacket Checkout with ID
- Locker Rooms and Showers
- Lounge Chairs
- Picnic Tables with Umbrellas
- Water Aerobics
- Water Slides

### OPEN SWIM HOURS

Monday	12:00 pm–8:00 pm
Tuesday–Saturday	12:00 pm–7:00 pm
Sunday	12:00 pm–6:00 pm
Holidays	12:00 pm–7:00 pm

School Hours: August 19–30  
Monday 3:30 pm–8:00 pm;  
Tuesday–Friday 3:30 pm–7:00 pm;  
Saturday and Sunday Regular Hours

### OPEN SWIM FEE

3 & under *	No Charge
Spectator	\$2.00
Individual	\$5.00
Active Senior Adult (60+)	\$3.25
Military (with ID)	\$3.25

\*State Pool Rule R392-302-30 (C)

"Any child under three years old, any child not toilet trained, and anyone who lacks control of defecation shall wear a water resistant swim diaper and waterproof swimwear. Swim diapers and waterproof swimwear shall have waist and leg openings fitted such that they are in contact with the waist or leg around the entire circumference."

### LAP SWIM HOURS (NOW–AUGUST 17)

Monday–Friday	5:30 am–7:45 am
Monday	8:30 pm–10:45 pm
Tuesday–Friday	9:45 pm–10:45 pm
Holidays	No Lap Swim Available

### LAP SWIM FEES

Individual	\$3.00
Active Senior Adult (60+)	\$2.25

OPEN SWIM PASS FEES	(10) Punch Pass	3 Month Pass	*Platinum
Individual (age 4+)	\$40	\$120	\$250
Active Senior Adult (60+) and Military	\$25	\$80	\$150
Family (4 immediate family members)	NA	\$275	\$425
Aquatic Fitness/Lap Swim	\$20.75	\$75	NA
Active Senior Adult (Lap Swim/Water Aerobics)	\$12.50	\$55	NA

\* Includes one year pass to the Logan Recreation Center  
FEES ARE SUBJECT TO CHANGE

For more information contact Logan Parks and Recreation at (435) 716-9250

## YOUTH LEARN-TO-SWIM LESSONS

**Program Description:** American Red Cross Learn-to-Swim program taught by Certified American Red Cross Water Safety Instructors at the Logan Aquatic Center. This program is available to all children wanting to learn how to swim.

**Anticipated Outcome:** By the end of the course each participant will increase confidence in swimming and be more educated in water safety. Participants will learn proper swim techniques based on the specific class taken.

## ADULT LEARN-TO-SWIM LESSONS

**Beginning Adult** lessons are targeted to adults 16+ who would like to develop basic skills and increase comfort level in the water.

**Advanced Adult** lessons are targeted to adults 16+ who are already familiar with basic swimming skills, but who want to improve skills for fitness workouts or triathlon training.

**Times Offered:** 8:15 am, 9:05 am, 10:00 am, 10:50 am (Adult lessons are taught one on one)

## ADULT AND YOUTH LESSON INFORMATION

**Register:** NOW at the Logan Aquatic Center or online at [pr.loganutah.org](http://pr.loganutah.org) (until full)

**Fee:** \$40 per participant (a two week notice is required in order to receive a refund. A \$5 fee is charged for all refunds.)

**Location:** Logan Aquatic Center, 451 South 500 West

**Swim Session Dates:** **Session V:** July 29–August 8

**Health Benefit:**



### SUMMER YOUTH LEARN-TO-SWIM CLASS SCHEDULE (THREE CLASSES OF EACH LEVEL TAUGHT EVERY TIME SLOT)

8:15 am	Pre-A	Pre-B	Pre-C	Level-1
	Level-2	Level-3	Level-4	Level-5
	Level-6	Dive	Water Babies	
9:05 am	Pre-A	Pre-B	Pre-C	Level-1
	Level-2	Level-3	Level-4	Level-5
	Level-6	Dive	Water Babies	
10:00 am	Pre-A	Pre-B	Pre-C	Level-1
	Level-2	Level-3	Level-4	Level-5
	Level-6	Dive	Water Babies	
10:50 am	Pre-A	Pre-B	Pre-C	Level-1
	Level-2	Level-3	Level-4	Level-5
	Level-6	Dive	Water Babies	

Pre A=3 year olds, Pre B=4 year olds, Pre C=5 year olds, Level 1=6 year olds plus. Participants will advance through levels 1-6 as they pass requirements for each level.  
**ALL CLASSES ARE SUBJECT TO CHANGE**

Sports  
Quotes of  
All-Time

"Age is no barrier. It's a limitation you put on your mind."—Jackie Joyner-Kersey

Register for recreation programs at [pr.loganutah.org](http://pr.loganutah.org)

## BSA MERIT BADGE CLASSES

**Program Description:** An opportunity for scouts to enroll and complete the merit badge requirements for the Lifesaving and Swimming Merit Badge. **Participants are required to bring extra clothes and swim suit.**

**Anticipated Outcome:** Participants will learn proper rescue techniques based on course; pass off necessary requirements for merit badges; and receive the merit badge upon completion of requirements.

**Register:** Now (until full)

**Health Benefit:**



### SWIMMING MERIT BADGE

**Time:** 9:00 am–11:30 am

**Fee:** \$15

**Session IV:** July 27

### LIFESAVING MERIT BADGE

**Time:** 9:00 am–11:30 am

**Fee:** \$15

**Session IV:** August 3

## FAMILY DISCOUNT NIGHT

**When:** Every Monday night

**Location:** Logan Aquatic Center

**Fee:** \$15 per family—for immediate family members only

**Time:** 4:00 pm–8:00 pm

**Holidays:** 3:00 pm–7:00 pm

## LOGAN AQUATIC CENTER RENTAL

Full payment is required at time of reservation. Scheduling is available up to one year in advance. For more information email [tasma.taylor@loganutah.org](mailto:tasma.taylor@loganutah.org).

**Day/Time:** Tuesday–Saturday, 7:30 pm–9:30 pm

**Fee:** \$600/exclusive group use (up to 600 people) (\$1 per person after 600)

## LOGAN AQUATIC CENTER PAVILION RENTAL

Enjoy the covered pavilion located inside the Logan Aquatic Center. Great for birthday parties, family get-togethers, and other group events. For more information call (435) 716-9250 or (435) 716-9281 or visit [pr.loganutah.org](http://pr.loganutah.org) to reserve.

**Fee:** \$34 (per 3 hours)

**Times:** 12:00 pm–3:00 pm or 4:00 pm–7:00 pm

## ADAPTIVE AQUATICS

Adaptive Aquatics is offered every Saturday. People with disabilities are welcome to utilize the Logan Aquatic Center. Immediate family members are encouraged to come and swim with their loved ones. There is no charge for this program for participants or families. Lifeguards on duty at all times.

**Day:** Saturdays

**Begins/Ends:** Now through August 24

(no class August 10)

**Time:** 9:00 am–11:30 am

**Fee:** No Charge for participant or family

**Health Benefit:**





Aqua Power Aerobics



Fit for Life

### 30 MINUTE AQUA POWER AEROBICS

Come for a quick workout during swim lessons.

**Fee:** \$1 per class

**Begins:** June 3

**Times Available:** 8:15 am, 9:05 am, 10:00 am, and 10:50 am

**Health Benefit:**



### BODY FACTORY AQUATIC FITNESS

**Begins/Ends:** Now through August 16  
(except August 8–10)

**Fee:** \$3 per class  
\$20.75 for 10 punch pass  
\$75 for 3 month unlimited pass

**Active Senior:** \$1.50 per class

**Adult Fee:** \$12.50 for 10 punch pass  
\$55 for unlimited 3 month pass

#### AQUA POWER AEROBICS

Don't sweat, get wet! A great one hour calorie burning workout for improving and maintaining muscular strength, flexibility, and cardiovascular endurance. Terrific for all fitness levels. No swim skills required.

**Health Benefit:**



#### HYDROFIT

Plunge into deep water fitness! This challenging workout combines strength training with cardiovascular conditioning while utilizing hydrofit equipment for maximum resistance. Designed for the beginner, intermediate, advanced and sport/specific athletes.

**Health Benefit:**



#### FIT FOR LIFE

This workout emphasizes safe strength and endurance training in the most ideal environment, allowing greater ease of movement with less strain on bones and joints.

**Health Benefit:**



### LOGAN AQUATIC CENTER BODY FACTORY AQUATIC FITNESS SCHEDULE

Time	Monday	Tuesday	Wednesday	Thursday	Friday
7:00 am	Fit For Life	Fit For Life	Fit For Life	Fit For Life	Fit For Life
7:00 am	Hydrofit	Hydrofit	Hydrofit	Hydrofit	Hydrofit
8:00 am	Aqua Power Aerobics	Aqua Power Aerobics	Aqua Power Aerobics	Aqua Power Aerobics	Aqua Power Aerobics
8:00 am	Hydrofit	Hydrofit	Hydrofit	Hydrofit	Hydrofit
8:30 pm	Hydrofit				
9:45 pm	Hydrofit	Hydrofit	Hydrofit	Hydrofit	Hydrofit
9:45 pm	Aqua Power Aerobics	Aqua Power Aerobics	Aqua Power Aerobics	Aqua Power Aerobics	Aqua Power Aerobics

All classes are subject to change due to demand. If facility is closed during public hours for any reason there will be no night classes.

# LIFEGUARD SHOWCASE

The Logan Aquatic Center Lifeguard Showcase puts guards on display as they compete in teams of five to see who has the best set of skills.

Teams compete in three categories; Emergency response, technical skills, and response time.

This activity is fun for all ages. It gives patrons a behind the scenes look at the Logan Aquatic Center and how guards are trained to respond to emergency situations.

Guards are judged on their individual skills and given an end score to determine which team is the ultimate Logan Aquatic Center lifeguard champions.

Sports  
Quotes of  
All-Time

*"A trophy carries dust. Memories last forever."*—Mary Lou Retton

Sports  
Quotes of  
All-Time

*"One man practicing sportsmanship is far better than 50 preaching it."*  
—Knute Rockne



Game Face



Emergency Response



Technical Skills

For [more information](#) contact Logan Parks and Recreation at (435) 716-9250



Tournament Room Rental

# LOGAN RIVER GOLF COURSE

FOR MORE INFORMATION ABOUT FACILITIES OR PROGRAMS VISIT OR CALL  
550 WEST 1000 SOUTH, LOGAN, UTAH 84321 • (435) 750-0123

Pro—Jeff John, Superintendent—Randy Oldham • [theriver.loganutah.org](http://theriver.loganutah.org)

## JUNIOR GOLF CAMPS

**Program Description:** Come experience adult assisted golf for youth ages 4 to 14 years. No experience necessary. Kids learn basic fundamentals of golf—putting, chipping, driving, and etiquette—while having fun. Camp includes three days (Monday–Wednesday) of instruction and a play day on the final day (Thursday).

**Anticipated Outcome:** By the end of this program, participants will develop fundamental skills; increase confidence in playing ability; find instruction and facilities satisfactory; and be educated enough to participate in future golf camps and junior tournaments.

**Fee:** \$50 per participant  
**Times:** 8:00 am–9:00 am  
9:15 am–10:15 am  
10:30 am–11:30 am

**Health Benefit:**



- Presidents Cup Camp August 5–8  
Register at Logan River Now

## GOLF LESSONS

Improve your game and learn from professional instructors.

**Jeff John—Head Golf Professional PGA**

**Lesson Fee:**

- \$50 for a 45 minute lesson
- \$125 for a series of 3 lessons
- \$60 for a series of 3 lessons per person in groups of 3 or more

## TOURNAMENT ROOM RENTAL

Now accepting reservations.

- Three Hours or Less \$350.00
- Five Hours or Less \$600.00
- Full Day \$700.00
- Cleaning Fee \$100.00  
(Per event if using outside caterer)

No additional fee for outdoor patio use. Make a reservation by calling the Logan River Golf Course at (435) 716-9275. Fees subject to change.

## 4 HOLE LUNCH SPECIAL

Spend lunch at the course. Golf up to 4 holes for \$6. Does NOT include cart. Estimated time is approximately one hour.

## GOLF COURSE FEES

### AVAILABLE PROGRAMS AND AMENITIES

- 7 Day Advance Reservations
- 18 Hole Course
- Driving Range
- Facility Rental
- Food/Beverage Services
- Group Golf Lessons
- Open Daily
- Private Golf Lessons
- Putting Green
- Tournaments Available

### JUNIOR (17 & UNDER)

9 Hole.....	\$ 11.00
18 Hole .....	\$ 22.00
20 Punch Pass (9 Hole Rounds).....	\$160.00
Season Pass .....	\$300.00

### ADULT

9 Hole.....	\$ 17.00
18 Hole.....	\$ 34.00
20 Punch Pass (9 Hole Rounds).....	\$275.00
Season Pass .....	\$950.00

### ACTIVE SENIOR ADULT (60 & OVER)

9 Hole.....	\$ 13.00
18 Hole.....	\$ 26.00
10 Punch Pass (18 Hole Rounds).....	\$230.00
Season Pass .....	\$900.00

### DRIVING RANGE

(Open daily from daylight to sunset)

Regular Bucket .....	\$ 5.00
Large Bucket.....	\$ 10.00
Season Range Pass (April–September).....	\$450.00

### POWER CART RENTAL

9 Holes.....	\$ 8.00
18 Holes.....	\$ 16.00

(Punch Pass and Season Pass Available)

**FEES ARE SUBJECT TO CHANGE**

Register for recreation programs at [pr.loganutah.org](http://pr.loganutah.org)

# LOGAN RIVER GOLF COURSE EVENTS

## WHAT'S HAPPENING AT THE RIVER

Monday nights are family nights. All range balls are half price from 6:00 pm-9:00 pm. Family night four hole special. \$20.00 per foursome after 7:00 pm.

Four Hole Special: \$6.00—on a space available basis.

Lunch Special: \$10.00 for a regular bucket of balls and the daily special. Includes sandwich, chips and a drink.

Men's and Women's Clubs have extended their tournament days to both Tuesday and Wednesday—play anytime during the day.

Couples League—Thursdays From 4:30 pm-6:00 pm. Different format every week.

Call the shop for more details or to sign up (435) 750-0123.

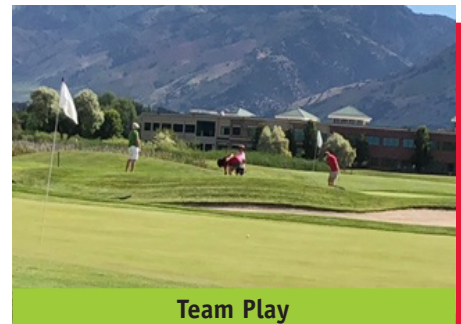
Follow us on Facebook and Twitter!

Sports  
Quotes of  
All-Time

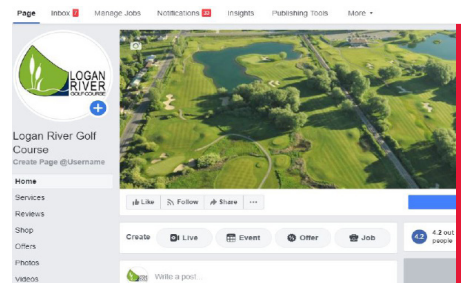
**"When you've got something to prove,  
there's nothing greater than a challenge."  
—Terry Bradshaw**



Family Golf



Team Play



Follow Us on Facebook

# LOGAN RIVER GOLF COURSE UCAIR GRANT RECIPIENT



Golf Course Utility Maintenance Vehicles



Cemetery Utility Maintenance Vehicles



Cemetery Utility Maintenance Vehicle

The Logan Parks and Recreation Department is a recipient of the 2018-2019 UCAIR Grant. The grant was awarded by the Utah Clean Air Partnership Board of Directors to Logan City in November of 2018. The City's proposal was for matching funds to replace two gasoline and diesel-powered utility maintenance vehicles for the Logan River Golf Course and Logan City Cemetery to enhance air quality. The utility maintenance vehicle is a four-wheel, two-seater, lightweight maintenance vehicle. It is intended to haul gear and equipment on site. These vehicles generally weigh about 1,000 lbs. They are versatile, well-suited for the Cemetery and the Golf Course, maneuvering in tight spaces, leaving a smaller tread mark than full-size vehicles would. These electric vehicles operate quieter than a gas or diesel-powered utility maintenance vehicle.

The grant provides matching funds for the City to replace the current ones with electric-powered utility maintenance vehicles. Since the month of March, the Cemetery and Golf Course maintenance staff have been pleased with the performance of the electric utility maintenance vehicles. Over the past six months, the staff have reported an obvious reduction in fuel consumption while accomplishing the needed tasks that are performed by utility maintenance vehicles in a timely manner and without lost time due to repairs.

For instance, the gas and diesel-powered utility maintenance vehicles in 2017 used 18 gallons of diesel and 11 gallons of gas during the months of April and May, and required 23 hours of repair, or time out of service. Comparatively, while the replacement electric utility maintenance vehicles are relatively new, for the first six months no service time was required, and there has not been a task that the electric vehicles haven't been able to perform that were previously performed by the gas and diesel-powered vehicles during 2017-18.

The City Cemetery and Logan River Golf Course maintenance staff will continue to measure and monitor the performance and effectiveness of the electric replacements. The Parks and Recreation Department greatly appreciates the opportunity to partner with UCAIR and the ability to replace fossil-fuel utility maintenance vehicles with electric vehicles to enhance air quality in Logan.



**Environmental Benefits: Reduce, Reuse, Recycle;  
Promotes Conservation and Preservation;  
Encourages Environmental Stewardship**

# LOGAN CITY PARKS SYSTEM

FOR MORE INFORMATION ABOUT FACILITIES OR PROGRAMS VISIT OR CALL  
195 SOUTH 100 WEST, LOGAN, UTAH 84321 • (435) 716-9250

pr.loganutah.org • Parks Superintendent—Ed Stephens



Bridger Park

## GREATEST PARKS IN UTAH

### PARK RESERVATIONS

- Reservations can be made one year in advance.
- Pavilions are available from 9:00 am to 3:00 pm or 3:30 pm to dusk for \$34 or \$48, or from 9:00 am to dusk for \$68 or \$96. **Park fees increase after October 15, 2019 to \$35 and \$50 or \$70 and \$100.**
- Volleyball pits can be reserved from 9:00 am to 3:00 pm or 3:30 pm to dusk for \$10 or from 9:00 am to dusk for \$20.
- All cancellations will be charged a \$5 fee; refunds will not be given due to inclement weather. A two week notice is required to receive a refund.
- Reservations can be made online at pr.loganutah.org.
- Fees are subject to change.

### RESERVABLE AREAS

- Adams Park \$34\*
- Bridgerland Park \$34
- Bridger Park \$48
- Canyon Entrance Park \$34
- Fairview Park \$34
- Hyrum Gibbons Mt. Logan Park \$34\*
- Jens Johansen Park \$34\*
- Lundstrom Park \$34
- Merlin Olsen Central Park North \$34\*
- Merlin Olsen Central Park South \$34\*
- River Hollow Park \$34\*
- Soccer Park Complex \$34
- Willard R. Dahle Memorial Park \$34
- Willow Park Center Stage \$48\*
- Willow Park Lion's \$34\*
- Willow West \$34
- Willow West Picnic Area \$34
- Willow West Rotary \$48\*

\*Electrical outlets available. Power capabilities are 10 amps per outlet.



> park tours



> reservations


## PARK RULES AND INFORMATION

- Confetti, piñatas and water balloons are not allowed in City parks.
- The use of loud speakers, public address systems, or amplified music (portable stereos) must be in accordance with City ordinances.
- City ordinance dictates that all parks close at dusk.
- Drinking fountains are the only water source available in City parks. Water spigots/taps are not available to the general public.
- Please do not remove tables from reservable areas.
- Vehicles are restricted to designated parking areas only. Absolutely no vehicles are allowed on the grass.
- No alcoholic beverages allowed in any City park.
- Smoking is NOT permitted in any City park.
- No littering. Leave areas in good, clean condition.
- No domestic pets allowed unless otherwise posted.
- No weapons or firearms allowed on park property, unless otherwise allowed by state law.
- Due to liability and maintenance issues, dunk tanks or slip and slides are not allowed.
- Sports should be played in designated, unreserved areas only.
- Use of metal detectors in parks is prohibited.
- Take care of our trees. Slacklines and hammocks are not allowed in public parks. Do not tie anything to City trees or park structures. City Ordinance 12.12.140
- Do not feed the waterfowl or other wildlife.
- Do not use barbecue units on park picnic tables.
- Portable fire pits are prohibited.
- Soliciting or selling of merchandise, tickets, or services is prohibited without a Special Event Permit.
- The use of inflatable amusement devices requires an additional signed contract and liability insurance.
- Some ball fields and play areas are open to the public and can be used on a first come, first served basis. Organized leagues and reservations have preference over use of the ball fields and sports fields.

Sports  
Quotes of  
All-Time

**"If you can't outplay them,  
outwork them."—Ben Hogan**

Reserve a pavilion at [pr.loganutah.org](http://pr.loganutah.org)

Park Classification	LOGAN CITY PARKS SYSTEM INFORMATION		Acreage	ADA Accessible	Barbecues	Basketball Court	Dog Friendly Area	Drinking Fountain (May-September)	Electricity-10 amp (Limited Supply)	Fishing	Loop Walkways	Parking Lot	Pavilion	Pickleball Court	Picnic Areas	Playground	Reservable (Capacity)	Restroom (May-September)	Sports Area	Tennis Court	Trail Connections	View Area	Volleyball Pit	Wildlife
	<a href="#">&gt; reserve here</a> 																							
N	Adams Park-550 North 500 East		5	●	●			●	●			●					(100)	●					●	
G	Boulevard Parkway-520 East Boulevard		2	●								●									●	●		
N	Bridger Park-1181 North 400 West		3	●	●			●				●	●	●	●	●	(250)	●			●		●	
C	Bridgerland Park-900 North 100 West		7.09	●	●			●				●	●		●	●	(100)	●	●				●	
M	Brookside Park-500 North Brookside		.07																					
M	Canal Corner-800 North 300 East		.22												●									
S	Canyon Entrance Park-US 89 & Canyon Road		5.44	●	●			●		●		●	●		●		(60)	●			●		●	
G	Canyon Road Memorial Park-955 East Canyon Road		4																		●	●	●	
G	Center Street Parkway-231 East Center		.66																		●			
NRA	Deer Pen Property-1800 East 1700 North		23.42				●																●	
NRA	Denzil Stewart Nature Park-800 East 100 South		7	●				●		●	●	●			●								●	
NRA	Devere and Velda Harris Park and Nature Preserve-Dry Canyon		70				●					●											●	
S	Don Reese Park-1200 North 400 West		9	●								●			●			●	●				●	
N	Eliason Park-200 North 500 West		.46	●				●							●	●					●			
S	Fairview Park/LAC-451 South 500 West		6	●	●			●				●	●		●	●	(100)	●			●		●	
N	Garff Wayside Gardens-100 South Main		2.86	●								●			●						●			
NRA	Gateway Park - Legrand Street US 89-91		8.26	●																			●	
C	Hyrum Gibbons Mt. Logan Park-1400 East 350 South		22	●	●	●		●	●	●	●	●	●	●	●	●	(100)	●	●		●			
N	Jens Johansen Park-850 East 100 North		2.6	●	●			●	●	●	●	●	●	●	●	●	(50)	●						
N	Jones Neighborhood Park-400 West 625 North		1.25	●			●								●	●					●			
P	Kilowatt Park-331 South 300 West		1	●			●								●									
N	Logan Meadows Park-350 South 600 West		3.5				●								●	●								
S	Logan Skate Park-500 South 595 West		.79	●				●				●						●	●					
N	Lundstrom Park-1600 East 1350 North		13.33	●	●			●				●	●		●	●	(60)	●	●		●			
P	Lynn and Merle Olsen Park-Canyon Road & Center Street		1	●																				
N	Majestic Park-766 Majestic Drive		1.20	●											●	●								
C	Merlin Olsen Central Park-300 East Center		9.20	●	●	●		●	●			●	●	●	●	●	(100)	●	●	●	●		●	
N	Morningside Park-450 East 1150 North		1	●											●	●	(100)							
G	Pioneer Parkway-165 East Poplar Avenue		3	●			●								●						●			
M	Quail West Park and Open Space -1473 Quail Way		.54																					
S	Ray Hucie Hydro Park-US 89 & Canyon Road		3	●			●		●		●				●	●							●	
S	Rendezvous Park-1500 South US 89-91		8.77	●			●		●		●							●			●		●	
N	River Hollow Park-10 River Park Drive		4.3	●	●			●	●				●		●	●	(100)	●					●	
S	Second Dam Park -3670 East US 89		4.64	●	●			●	●			●	●		●	●		●			●		●	
S	Soccer Park Complex -1500 South Legrand St		25.18	●				●		●	●	●	●	●	●	●	(100)	●	●					
P	Sumac Park-1020 Sumac Drive		.25												●									
M	The Point-Mountain Road & Cliffside Drive		.10																			●		
S	Trapper Park-1497 South 1600 West		20						●		●				●	●					●		●	
N	Willard R. Dable Memorial Park-850 West 1230 South		2	●		●							●		●	●	(50)						●	
C	Willow Horseshoe Park -500 West 700 South		4.63	●	●							●	●		●	●	(60)		●		●		●	
C	Willow Park-450 West 700 South		4	●	●			●	●			●	●		●	●	(100)	●			●			
S	Willow Park Sports Complex-500 West 700 South		18	●				●				●			●	●	(300)	●			●			
S	Willow Park Zoo-419 West 700 South		9.50	●				●				●			●	●		●			●		●	
C	Willow West-500 West 700 South		7.11	●	●			●	●	●	●	●	●	●	●	●	(35-50)		●		●		●	
N	6th South Park-1900 West 600 South		19.24																					
NRA	1700 South Park-300 West 1700 South		1.6																					
Park Classification		C	G	M	N	NRA	P	S	Future Park															
Definition		Community Park	Greenway	Mini Park	Neighborhood Park	Natural Resource Area	Pocket Park	Special Use Park/Facility																

# DOG FRIENDLY PARKS PILOT PROGRAM

## A REMINDER TO DOG OWNERS

Dogs are permitted off-leash within the gated dog run area at Rendezvous Park, Deer Crest between Lundstrom Park and 1500 North, and behind the flood control impoundment at the end of Mountain Road at Dry Canyon.

## PET OWNERS ARE REQUIRED TO ADHERE TO THE FOLLOWING:

Properly bag and dispose of dog waste in provided City trash cans

Dogs must have a current license  
Dogs must not harass others  
Dogs must not be unattended  
Dogs must be under voice control  
Dogs must not be a nuisance



Dogs are NOT allowed in any other parks within the Logan City Parks System except for parks that may have a sidewalk through the park. Dogs MUST stay on the sidewalk and be on a leash at all times. Dogs are not allowed in any other area of the park.

## AS PART OF LOGAN CITY'S DOG FRIENDLY PARKS PILOT PROGRAM DOGS ARE ALLOWED OFF-LEASH IN THE FOLLOWING PARKS THROUGH APRIL 15, 2020 AT WHICH TIME THE PILOT PROGRAM WILL BE REEVALUATED BY THE CITY OF LOGAN:

Jens Johansen Park, 850 East 100 North  
Jones Neighborhood Park, 400 West 625 North  
Kilowatt Park, 331 South 300 West  
Logan Meadows Park, 350 South 600 West  
Pioneer Parkway, 165 East Poplar Avenue  
Ray Hugie Hydro Park, US 89 at Canyon Road  
Logan Service Center East Area, 810 West 600 North

**LOGAN CITY STAFF WILL PLACE RED NO DOGS ALLOWED SIGNS TO REMIND DOG OWNERS THAT DOGS ARE ONLY ALLOWED IN LOGAN'S DOG FRIENDLY PARKS AS NOTED.**



Jones Neighborhood Park



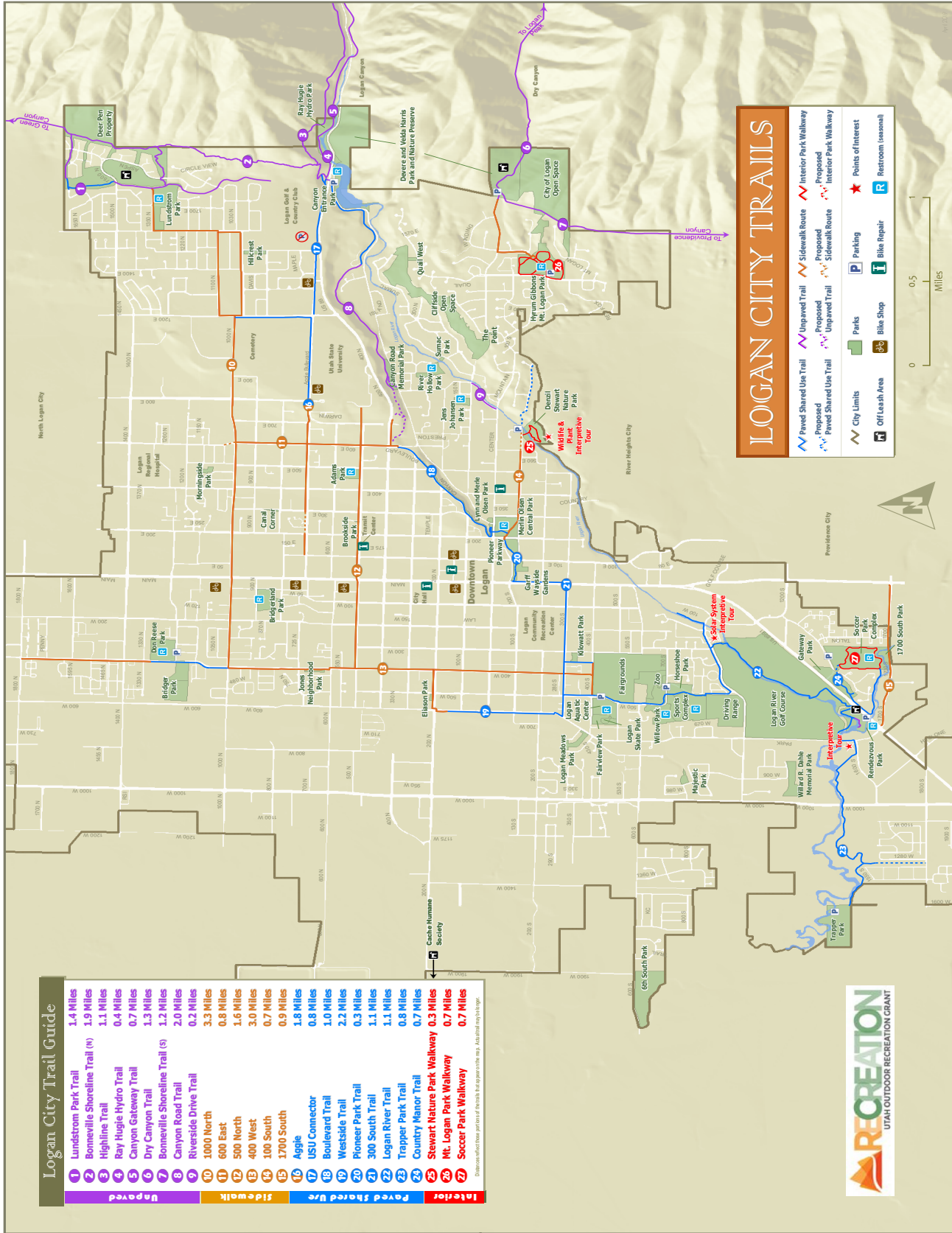
Kilowatt Park



No Dogs Allowed Sign

For more information contact Logan Parks and Recreation at (435) 716-9250

# LOGAN CITY TRAIL GUIDE



## Logan City Trail Guide

Trail Number	Trail Name	Distance
1	Lundstrom Park Trail	1.4 Miles
2	Bonneville Shoreline Trail (N)	1.9 Miles
3	Highline Trail	1.1 Miles
4	Ray Hogue Hydro Trail	0.4 Miles
5	Canyon Gateway Trail	0.7 Miles
6	Dry Canyon Trail	1.3 Miles
7	Bonneville Shoreline Trail (S)	1.2 Miles
8	Canyon Road Trail	2.0 Miles
9	Riverside Drive Trail	0.2 Miles
10	1000 North	3.3 Miles
11	600 East	0.8 Miles
12	500 North	1.6 Miles
13	400 West	3.0 Miles
14	100 South	0.7 Miles
15	1700 South	0.9 Miles
16	Aggie	1.8 Miles
17	USU Connector	0.8 Miles
18	Boulevard Trail	1.0 Miles
19	Westside Trail	2.2 Miles
20	Pioneer Park Trail	0.3 Miles
21	300 South Trail	1.1 Miles
22	Logan River Trail	1.1 Miles
23	Trapper Park Trail	0.8 Miles
24	Country Manor Trail	0.7 Miles
25	Stewart Nature Park Walkway	0.3 Miles
26	Mt. Logan Park Walkway	0.7 Miles
27	Soccer Park Walkway	0.7 Miles

Distances reflect those posted on the trailhead. Trail distances are approximate. Actual distances may vary.

## LOGAN CITY TRAILS

- Paved Shared Use Trail
- Unpaved Trail
- Sidewalk route
- Interior Park Walkway
- Proposed Paved Shared Use Trail
- Proposed Unpaved Trail
- Proposed Sidewalk route
- Proposed Interior Park Walkway
- Parks
- Parking
- Points of Interest
- City Limits
- Off Leash Area
- Bike Shop
- Restroom (seasonal)
- Bike Repair
- Restroom (seasonal)



# DEPARTMENT PROJECTS UPDATE

## MERLIN OLSEN CENTRAL PARK SIDEWALK PROJECT

New sidewalk was added connecting 300 East to the ice skate rental building, the north pavilion, with links to the playground and the existing walkway that leads to the tunnels under 200 East and Center Street. The project is made possible by Community Development Block Grant funds.



Central Park Sidewalk Project

## UCAIR AIR QUALITY GRANT

Replacement of Maintenance Utility Trucksters at the Logan Cemetery and the Logan River Golf Course. The City of Logan received an air quality grant from UCAIR to replace gas and diesel-powered maintenance utility vehicles with electric battery-powered units. The electric vehicles have a haul feature, seat two people, reduce fossil-fuel consumption, and operate quietly, perfect for Cemetery patrons and golfers, alike.

## EXPANSION OF PARKING LOT AT RENDEZVOUS PARK

22 additional parking spaces and pedestrian access was constructed to increase available parking at Rendezvous Park. This very popular park can now accommodate 43 vehicles which features a dog park and is a trailhead to the Logan River Trail. Rendezvous Park is located at 1500 South US 89-91.



Rendezvous Park Parking Lot

## LANDSCAPED ROUNDABOUT AT 1500 NORTH ASPEN DRIVE

Parks staff installed a sprinkler system and landscaped the roundabout at 1500 North Aspen Drive. This is in the vicinity referred to as Deer Crest. This location is in proximity to Lundstrom Park and the Lundstrom Park Canal Trail.



1500 North Aspen Drive Roundabout

Sports  
Quotes of  
All-Time

"Persistence can change failure into extraordinary achievement."—Marv Levy

# DEPARTMENT PROJECTS ON THE HORIZON



Angels Landing Surface

## REPLACEMENT AND UPGRADES AT ANGELS LANDING PLAYGROUND AT WILLOW WEST PARK

Removal and replacement of accessible play surface and play equipment, and construction of a walkway that connects from the playground to the Rotary Picnic Pavilion and 500 West. This project is funded in part by the Cache County RAPZ Tax program and the City of Logan.



Logan Aquatic Center 50-Meter Pool

## CONSTRUCTION OF A 1.6-ACRE PARK AT 1700 SOUTH BLACKSMITH FORK RIVER

The 1700 South Park will be located at 300 West 1700 South and includes a pedestrian bridge that crosses the Blacksmith Fork River and connects to the Logan Soccer Complex and its looped sidewalk and a nearby neighborhood trail in the Country Manor subdivision.

## 50-METER POOL RESURFACING AT THE LOGAN AQUATIC CENTER

Work is projected to commence in September of 2019 to address the 50-meter pool in preparation for the 2020 swim season. This project is funded in part with Cache County RAPZ Tax funds.



1700 South Park

## TRAPPER PARK PAVILION

A picnic pavilion is being planned for Trapper Park. The popularity of this park located at 1496 South 1600 West will enhance the park experience for patrons. Other amenities that exist at Trapper Park include a playground, a portable restroom, and is currently the end-point or starting-point of the Logan River Trail.

Sports  
Quotes of  
All-Time

"I've learned that something constructive comes from every defeat."—Tom Landry

# RECREATION CENTER

FOR MORE INFORMATION ABOUT FACILITIES OR PROGRAMS VISIT OR CALL  
195 SOUTH 100 WEST, LOGAN, UTAH 84321 • (435) 716-9250

pr.loganutah.org • Recreation Manager—Dan Blakely

## FACILITIES—HOURS—FEES

### AVAILABLE PROGRAMS AND AMENITIES

- Adult Locker Rooms
- Basketball
- Batting Cage
- Classroom
- Facilities for Rent
- Fitness Classes
- Indoor Track
- Kitchen
- Leisure Arts Gym
- Main Gym
- Equipment available to check out with a valid ID: tennis and racquetball rackets, basketballs, wallyball and pickleball equipment
- Multi-purpose Gym
- Racquetball
- Sauna
- Steam Room (Men's only)
- Tennis/Pickleball
- Wallyball
- Weight/Exercise Areas
- Weight Room
- Whirlpool
- Youth Locker Rooms

### PUBLIC HOURS

(Summer)  
Monday–Friday 5:30 am–9:30 pm  
Saturday 7:00 am–5:00 pm  
(School Year)  
Monday–Friday 5:30 am–2:30 pm  
5:30 pm–9:30 pm  
Saturday 7:00 am–5:00 pm  
(In January, February, and March the Center is open until 9:30 pm on Saturdays)

### DAILY ADMISSION FEE

Youth (4–17)..... \$3.00  
Adult (18 & older)..... \$4.00  
Active Senior Adult (60+)..... \$2.25  
Military (with ID)..... \$2.25  
Logan High Student (with ID) \$1.00

Pass Fees DO include the use of the Group Fitness Aerobics Classes. Pass Fees DO NOT include the use of the Logan Aquatic Center or Logan Community Recreation Center Programs

PASS FEES	1 Month	3 Month	6 Month	1 Year	(10) Punch
Youth (17 & under)	\$20	\$50	\$78	\$125	\$16
Adult (18 & older)	\$25	\$60	\$99	\$170	\$30
Active Senior Adult (60+) and Military	\$20	\$50	\$73	\$120	\$10.50
Family (4 immediate family members LIVING IN HOUSEHOLD)	NA	NA	\$146	\$240	NA
Each Additional Family Member	NA	NA	\$21	\$25	NA



### TENNIS AND RACQUETBALL COURT RESERVATIONS

- Reservations can be made one day in advance
- Two hour maximum per court, per person, phone call or walk-in
- Two court maximum for racquetball courts and one court maximum for tennis courts unless prior arrangements have been made through the Recreation Division Manager

### LOGAN COMMUNITY RECREATION CENTER FAMILY DISCOUNT NIGHT

Family discount night is every Monday night from 5:30 pm–9:30 pm. The whole family can pay \$5 to get into the Logan Community Recreation Center (immediate family members only) and access all amenities within the facility.

### LOGAN COMMUNITY RECREATION CENTER CLOSURE DATES

#### 2019 Holiday Closure Dates:

Monday, September 2–Labor Day  
Thursday, November 28–Thanksgiving Holiday  
Wednesday, December 25–Christmas Holiday

#### 2020 Holiday Closure Dates:

Wednesday, January 1–New Year's Holiday  
Monday, May 25–Memorial Day  
Saturday, July 4–Independence Day  
Friday, July 24–Pioneer Day



Main Gym

Register for recreation programs at [pr.loganutah.org](http://pr.loganutah.org)

## LOGAN COMMUNITY RECREATION CENTER FACILITY RENTAL FEE SCHEDULE

(These rates pertain to operating and non-operating hours of the facility)

<b>Priority 1:</b>	Logan High School and City-sponsored activities	No fee charged
<b>Priority 2:</b>	Non-profit, youth promoting, or recreation/education promoting organizations: (Non-profit is defined as no fees charged for participating or spectating and no personal gain is realized by members of the renting organization)	
	Minimal Fee	\$5/hr
	Kitchen, Classroom, Conference Room, Youth Locker Room(s)	\$10/hr or \$25/3 hr
	Adult Locker Rooms (Men's or Women's)	\$35/hr
	Indoor Tennis Courts (Deck A or C); Racquetball Courts (1, 2, 3, 4, 5, 6, 7)	\$10/hr or \$25/3 hr
	Leisure Arts Gym	\$15/hr or \$37/3 hr
	Multi-purpose North	\$10/hr or \$25/3 hr
	Multi-purpose South	\$10/hr or \$25/3 hr
	Multi-purpose Whole	\$20/hr or \$50/3 hr
	Main Gym	\$25/hr or \$60/3 hr
<b>Priority 3:</b>	Civic, social, religious, club, professional, profit organizations, for profit youth promoting or recreation/education promoting organizations:*	
	(Profit is defined as fees charged for participating or spectating and personal gain is realized by members of the renting organization)	
	Kitchen, Classroom, Conference Room, Youth Locker Room(s)	\$15/hr or \$35/3 hr
	Adult Locker Rooms (Men's or Women's)	\$50/activity
	Indoor Tennis Courts (Deck A or C); Racquetball Courts (1, 2, 3, 4, 5, 6, 7)	\$15/hr or \$35/3 hr
	Leisure Arts Gym	\$25/hr or \$60/3 hr
	Multi-purpose North	\$15/hr or \$37/3 hr
	Multi-purpose South	\$15/hr or \$37/3 hr
	Multi-purpose Whole	\$30/hr or \$75/3 hr
	Main Gym	\$35/hr or \$90/3 hr
<b>Priority 4:</b>	Individuals or organizations renting for the purpose of personal gain:*	
	Kitchen, Classroom, Conference Room, Youth Locker Room(s)	\$20/hr
	Adult Locker Rooms (Men's or Women's)	\$70/activity
	Indoor Tennis Courts (Deck A or C); Racquetball Courts (1, 2, 3, 4, 5, 6, 7)	\$20/hr or \$50/3 hr
	Leisure Arts Gym	\$35/hr or \$90/3 hr
	Multi-purpose North	\$20/hr or \$50/3 hr
	Multi-purpose South	\$20/hr or \$50/3 hr
	Multi-purpose Whole	\$40/hr or \$100/3 hr
	Main Gym	\$50/hr or \$125/3 hr
<b>Whole building Rental:</b>	Determined by LPRD Staff	
<b>Cleaning Deposit:</b>	\$100	

Based on the event, security may be required. Security may be arranged through the Logan City Police Department.

**Capacity:** Main Gym – 2500 Multi-purpose Gym – 854 Leisure Arts Gym – 520 Kitchen/Classroom – 24

\*May be required to acquire special event permit, insurance, and/or pay special event fee (up to \$75).

Sports  
Quotes of  
All-Time

"Make sure your worst enemy doesn't live between your own two ears."—Laird Hamilton

Sports  
Quotes of  
All-Time

"Set your goals high, and don't stop till you get there."—Bo Jackson

Scan This  
QR Code >

> register here



**ALL PROGRAM DATES, TIMES, FEES, AND LOCATIONS ARE SUBJECT TO CHANGE**

### STEP IT UP

**Program Description:** A chance to get in shape while earning incentive awards. For every 100 miles a patron walks, he/she can receive either 3 day passes to the Logan Aquatic Center or 5 day passes to the Logan Community Recreation Center. This program promotes healthy, active lifestyles and well-being for members of the community through walking, jogging, and running. Patrons must be 7 or older to participate. Participants can earn rewards for up to 300 miles per year.

**Anticipated Outcome:** Participants will develop positive lifestyle habits; increase level of self-satisfaction through activity; find trails to be safe and satisfactory; and be willing to have further involvement throughout the year.

**Register:** Ongoing  
**Location:** Logan Community Recreation Center,  
 195 South 100 West  
**Fee:** \$5 (includes pedometer and tracking log)  
**Health Benefit:**



Lundstrom Park Trail



Softball

### TWO PITCH SOFTBALL

**Program Description:** An opportunity for adults to play in an organized and officiated recreational softball league. There are leagues available for men, women, and co-ed teams of various skill levels. Certain league rules apply.

**Anticipated Outcome:** Participants will increase satisfaction and enjoyment through recreation and improve personal health and well being which, ultimately will leave the participant looking forward to playing next season.

**Register:** August 1 (until full)  
 (No late registrations will be accepted)  
**Where:** Logan Community Recreation Center,  
 195 South 100 West  
**Fee:** \$280 per team  
 (due at time of registration)  
**Games:** 8 league games plus playoffs. Teams will  
 play double headers each week.  
 (weather permitting)  
**Games Begin:** Week of September 9 (subject to change)  
**Game Times:** 6:00 pm to 10:00 pm  
**Leagues Offered:** Monday Men's Open  
 Monday Co-Ed  
 Wednesday Co-Ed  
 Wednesday Men's Open  
 We cannot guarantee schedules between  
 leagues will not conflict.  
**Managers Meeting:** Wednesday, September 4 at 6:30 pm  
 (Logan Community Recreation Center)  
 League by-laws will be discussed and  
 schedules will be available.

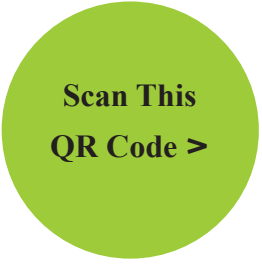
**Health Benefit:**



Sports  
Quotes of  
All-Time

**"If you can't outplay them,  
outwork them."—Ben Hogan**

For more information contact Logan Parks and Recreation at (435) 716-9250



> register here



**HEALTH SEMINAR FOR ACTIVE SENIOR ADULTS (60+)**

**Register:** Call (435) 716-9250 and put your name on the list  
**Location:** Logan Community Recreation Center, 195 South 100 West  
**Fee:** Free  
**Seminar:** Cognitive Health  
**Date:** October 22  
**Time:** 11:00 am–12:00 pm  
**Instructor:** Audrey Hivner  
**Health Benefit:**



Herald Journal Tennis Tournament

**CACHE VALLEY TENNIS ASSOCIATION TENNIS TOURNAMENT**

August 6–14 Herald Journal Tennis Tournament

For information contact CVTA (801) 520-1713, (435) 881-6402 or visit [cachevalleytennis.org](http://cachevalleytennis.org)

**PICKLEBALL TOURNAMENT**

Register using [PickleballPassport.com](http://PickleballPassport.com) or download the Pickleball Passport App. Create a free account, select tournament, and select teammate.

September 12–14 Fall Paddle Battle

(subject to change based on demand)  
**Location:** Bridger Courts, 1188 North 400 West  
**Fee:** \$15 to register, \$5 per event (includes shirt)  
**Events Offered:** Round Robin Doubles: Men's, Women's, and Mixed 2.5 (Beginners), 3.0–3.5, 4.0–4.5, 5.0  
**Health Benefit:**



**SALSA AND LATIN DANCE**

Learn how to Salsa, Cha-Cha, Merengue, and Bachata.

**Register:** Ongoing  
**Day:** Friday  
**Time:** 6:30–7:30 pm  
**Location:** Logan Community Recreation Center, 195 South 100 West  
**Fee:** \$2 per class  
**Health Benefit:**



Salsa and Latin Dance

Sports Quotes of All-Time

“Do you know what my favorite part of the game is? The opportunity to play.”  
 —Mike Singletary

Sports Quotes of All-Time

“Most people never run far enough on their first wind to find out they've got a second.”—William James

Scan This  
QR Code >

> register here



### FALL 3 ON 3 BASKETBALL

**Program Description:** An organized and officiated 3 on 3 recreational basketball league. Games will be played half court. League will follow UHSAA basketball rules.

**Anticipated Outcome:** Participants will increase quality of life through continuous exercise; be satisfied with the program facilities provided; increase confidence with playing ability; and leave looking forward to future programs.

- Register:** August 1 (until full)  
(teams will not be put on schedules after registration deadline)
- Location:** Logan Community Recreation Center,  
195 South 100 West
- Fee:** \$125 per team (due at time of registration)  
8 game season with playoffs
- Season Begins:** Week of September 30 (subject to change)
- Leagues:** Thursday Men's Over 40  
Thursday Men's 3 on 3  
Thursday Women's 3 on 3  
(subject to change)

**Health Benefit:**



3 on 3 Basketball

### FALL BASKETBALL

**Program Description:** An organized and officiated recreational basketball league. Semi-competitive and competitive leagues available for men and women at different skill levels. Certain league rules apply.

**Anticipated Outcome:** Participants will increase quality of life through continuous exercise; be satisfied with the program facilities provided; increase confidence with playing ability; and leave looking forward to future programs.

- Register:** August 1 (until full)  
(teams will not be put on schedules after registration deadline)
- Location:** Logan Community Recreation Center,  
195 South 100 West
- Fee:** \$300 per team (due at time of registration)  
8 game season with playoffs
- Games Begin:** Week of September 30 (subject to change)
- Leagues:** Monday Men's Open  
Tuesday Women's Open  
Tuesday Men's Open  
Wednesday Men's Open  
(subject to change)

**Health Benefit:**



### WINTER BASKETBALL

**Program Description:** An organized and officiated recreational basketball league. Semi-competitive and competitive leagues available for men and women at different skill levels. Certain league rules apply.

**Anticipated Outcome:** Participants will increase quality of life through continuous exercise; be satisfied with the program facilities provided; increase confidence with playing ability; and leave looking forward to future programs.

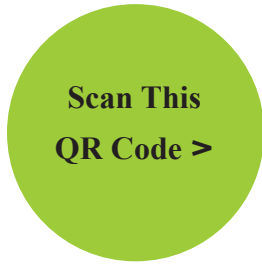
- Register:** November 1 (until full)  
(teams will not be put on schedules after registration deadline)
- Location:** Logan Community Recreation Center,  
195 South 100 West
- Fee:** \$300 per team (due at time of registration)  
8 game season with playoffs
- Games Begin:** Week of January 6 (subject to change)
- Leagues:** Monday Men's Open  
Tuesday Women's Open  
Tuesday Men's Open  
Wednesday Men's Open  
(subject to change)

**Health Benefit:**



Sports  
Quotes of  
All-Time

"Your biggest opponent isn't the other guy. It's human nature."—Bobby Knight



> register here



Kids Fitness



Indoor Soccer

ALL VOLUNTEERS WORKING WITH YOUTH MUST CLEAR A REQUIRED BACKGROUND CHECK. YOUTH PROGRAMS WOULD NOT BE POSSIBLE WITHOUT VOLUNTEERS.

KIDS FITNESS CLUB

Logan Parks and Recreation Department is pleased to announce the creation of a Kids Fitness Club. Through age appropriate games, kids will experience fun, safe, and friendly activities that will get their heart pumping and improve skills in teamwork, hand-eye coordination, and sportsmanship.

- Register: Preregistration Not Required
Date: Ongoing
Location: Logan Community Recreation Center, 195 South 100 West
Day: Saturdays
Time/Age: 8:30 am 3-4 years old, 9:30 am 5-8 years old
Fee: \$2

Health Benefit



CO-ED INDOOR SOCCER

Program Description: Come explore the fundamentals of soccer. Participants learn basic skills, sportsmanship, and build confidence and interest in the game of soccer.

Anticipated Outcome: Participants will increase their understanding of the game of soccer; increase confidence in playing ability; learn the importance of being a team player; and learn sportsmanship which will increase their desire to participate and play in the next session.

- Register: August 1 (until full), Logan Community Recreation Center, 195 South 100 West
Begins: September 10
Ends: October 3
Ages/Times: 3 and 4 year olds 5:30 pm-6:15 pm, 3 and 4 year olds 6:15 pm-7:00 pm, 5 and 6 year olds 7:00 pm-7:45 pm
Days: Tuesday and Thursday
Location: Logan Community Recreation Center, 195 South 100 West
Fee: \$25 per participant (includes shirt)

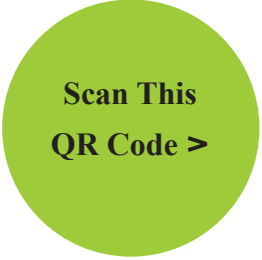
Health Benefit:



Sports Quotes of All-Time

Continuous effort—not strength or intelligence—is the key to unlocking our potential.—Liane Cardes

For more information contact Logan Parks and Recreation at (435) 716-9250



> register here



**FLAG FOOTBALL**

**Program Description:** A recreational (non-contact) youth flag football program for boys and girls grades 1-12. No experience necessary. Youth will learn the fundamentals, positions, skills, and sportsmanship required to participate in an organized and officiated league.

**Anticipated Outcome:** By the end of this program participants will understand the basic fundamentals and positions of football; will increase their confidence and skill level while enjoying the game of flag football; and have a desire to participate in future opportunities.

**Register:** August 1 (until full)  
**Play Begins:** Week of September 3  
 League runs six weeks  
**Days:** All games will be played on Tuesdays  
**Time:** Beginning at 5:00 pm (subject to change)  
**Location:** Willow Park, 500 West 700 South  
**Six Leagues Offered:**

- 1st and 2nd Grades
- 3rd and 4th Grades
- 5th and 6th Grades
- 7th and 8th Grades
- 9th and 10th Grades 7 vs 7 Passing League
- 11th and 12th Grades 7 vs 7 Passing League

**Fee:** \$30 per participant (includes shirt)

**Health Benefit:**



Flag Football



Jr. Jazz Basketball

**JR. JAZZ BASKETBALL**

**Program Description:** A recreational basketball league for boys and girls grades 1-12. No experience necessary. Participants will be taught the basic fundamentals, positions, skills, and sportsmanship required to participate in basketball. Every participant plays in every game.

**Anticipated Outcome:** By the end of this program the participant will understand the basic fundamentals of basketball positions on the court, dribbling skills, passing, and shooting basics; improve skills that will increase confidence; know and understand the importance of good sportsmanship; enjoy the game of basketball; and have a desire to participate in future opportunities.

**Register:** August 1–December 15 (or until full)  
**Games Begin:** January 4 for 9th–12th grades  
 January 11 for 1st–8th grades  
 (all games played on Saturdays)

**Leagues Offered and Fees:**

- 1st & 2nd grade (Boys) \$25 per child
- 1st & 2nd grade (Girls) \$25 per child
- 3rd & 4th grade (Boys) \$30 per child
- 3rd & 4th grade (Girls) \$30 per child
- 5th & 6th grade (Boys) \$30 per child
- 5th & 6th grade (Girls) \$30 per child
- 7th & 8th grade (Boys) \$40 per child
- 7th & 8th grade (Girls) \$40 per child
- 9th & 10th grade (Boys) \$40 per child
- 9th & 10th grade (Girls) \$40 per child
- 11th & 12th grade (Boys) \$40 per child
- 11th & 12th grade (Girls) \$40 per child
- All divisions play 8 games.
- 7th through 12th grades have playoffs.

**Health Benefit:**



**Referees Needed:**

If you are interested in being a referee, please contact Nathan Swartz at (435) 716-9245.

Sports Quotes of All-Time

“Good is not good when better is expected.”—Vin Scully

# FLAG FOOTBALL GRADES 9-12, NEW REUNION KIT RENTALS



Flag Football

## FLAG FOOTBALL GRADES 9-12

The Logan Parks and Recreation Department is always looking for ways to fill the needs of our youth through making additions to our current recreational programming. This year the Department added a 9-10 grade and a 11-12 grade 7 vs 7 Passing Flag Football League.

Rules included no hand-offs, no running plays, and all passes were forward passes. The quarterback had five seconds to throw the ball with no rushing. Our current Flag Football program was only available to grades 1-8.

This new passing league gives all youth the opportunity to participate in the Logan City Flag Football program. The \$30 fee per participant included an eight-game season played on Tuesday nights.



Family Time

## NEW REUNION KIT RENTALS

The Logan Parks and Recreation Department has acquired three new reunion kits available for rent at the Logan Community Recreation Center, 195 south 100 West.

Kits include a Deluxe Badminton Rental Pack, Multi-Sport Rental Pack, and a Water Sports Rental Pack. Rental fee is \$11 per day.

For more information contact the Logan Community Recreation Center front desk at (435) 716-9250.



Reunion Kit Rental

Sports  
Quotes of  
All-Time

“Champions keep playing until they get it right.”—Billie Jean King

## MEDIA RELEASE, RISK STATEMENT, CONSENT FOR MEDICAL TREATMENT

### Media Release

I hereby consent to allow my child's picture and/or likeness to appear in any official documentary, promotional, exclusive television, radio or film coverage of the Logan Parks and Recreation Department in any manner incidental to my participation in the activity of the Logan Parks and Recreation Department without compensation to me.

Parent/Guardian Signature \_\_\_\_\_ Date \_\_\_\_\_

### Participant Risk Statement

I, the undersigned, am a parent or legal guardian of the named minor. I fully understand that participating in youth sports presents a risk of serious injury and/or death. In my capacity as a parent or legal guardian, I understand the risks and my responsibility to the named minor, of the risks involved with sports participation. I have made a conscious decision to allow the named minor to play. I agree that my health and accident insurance will be the primary insurance to cover expenses for any such injury, including rehabilitation.

Parent/Guardian Signature \_\_\_\_\_ Date \_\_\_\_\_

### Consent For Medical Treatment

As parent or legal guardian of the above named, I hereby give my consent for emergency medical care prescribed by a duly licensed Doctor of Medicine or Doctor of Dentistry. This care may be given under whatever conditions are deemed necessary to preserve the life, limb, or well being of the registrant.

Parent/Guardian Signature \_\_\_\_\_ Date \_\_\_\_\_

### REFUND POLICY

#### Class/Activity Refund

- The Parks and Recreation Department encourages all participants to schedule activities carefully to avoid conflicts.
- A \$5.00 cancellation processing fee will be assessed on all patron requested refunds. A 50% refund will be authorized if withdrawal occurs prior to the start of the second week of the program. No refunds will be issued after the second week begins.
- Requests for refunds due to special circumstances or a verified medical reason will be granted on a prorated basis up to 50% of the total.
- If a class or activity is cancelled by the department, a full refund will be processed automatically.
- Refunds will be mailed within two weeks of the request.

#### Park Reservation Refund

- A two-week notice is required in order to receive a refund for a cancellation. A \$5.00 fee is charged for all cancellations. Refunds will not be given due to inclement weather. However, rescheduling based on availability, is provided without an additional fee.



For more information contact Logan Parks and Recreation at (435) 716-9250



Recreation Center Front Desk

1. Complete the **Registration Form** below and sign the **Media Release, Risk Statement, and Consent for Medical Treatment** on page 26.
2. WALK-IN registration is accepted at the Logan Community Recreation Center, 195 South 100 West.
3. MAIL-IN registration (must include payment).  
 Logan Parks and Recreation Department  
 195 South 100 West, Logan, UT 84321
4. FAX-IN registration with credit card information and signature to (435) 716-9254. Be sure to also fax **Media Release, Risk Statement, and Consent for Medical Treatment**.
5. Some programs are available for online registration at [pr.loganutah.org](http://pr.loganutah.org)
6. For more information call (435) 716-9250.

## REGISTRATION FORM

(Please Complete and Sign the Media Release, Risk Statement, and Consent for Medical Treatment on the Previous Page)

Program/Activity \_\_\_\_\_ Day/Time \_\_\_\_\_ Activity Fee \_\_\_\_\_

Participant's Name \_\_\_\_\_

Date of Birth \_\_\_\_/\_\_\_\_/\_\_\_\_ Age \_\_\_\_\_ Male \_\_\_\_\_ Female \_\_\_\_\_

Grade \_\_\_\_\_ Current School \_\_\_\_\_ Elementary School Area \_\_\_\_\_

Address \_\_\_\_\_ City \_\_\_\_\_ Zip \_\_\_\_\_

Cell Phone \_\_\_\_\_ Other Phone \_\_\_\_\_ E-mail \_\_\_\_\_

Emergency Contact \_\_\_\_\_ Phone \_\_\_\_\_ Relation \_\_\_\_\_

Other Information (allergies, medications, disabilities, behavioral problems, etc.) \_\_\_\_\_

\_\_\_\_\_

\_\_\_\_\_

I am willing to volunteer as: Head Coach \_\_\_\_\_ Assistant Coach \_\_\_\_\_ Team Helper/Other etc. \_\_\_\_\_

I would like to donate an additional \$ \_\_\_\_\_ (amount) for City sponsored youth recreation.

\_\_\_\_\_

Due to the inability to grant ALL requests, we ask that you not request to be placed on a certain team or with a certain player/coach. Should you make a request, there is no guarantee it will be honored.

### CREDIT CARD PAYMENT

Check type of card:     VISA             MC             DISCOVER

Card # \_\_\_\_\_ - \_\_\_\_\_ - \_\_\_\_\_ - \_\_\_\_\_            Expiration Date \_\_\_\_ / \_\_\_\_

Signature of Card Holder \_\_\_\_\_            Date \_\_\_\_\_

Register for recreation programs at [pr.loganutah.org](http://pr.loganutah.org)



**\$2 per Aerobic Class**  
**\$20 Unlimited One Month Pass**  
**\$25 Unlimited One Month+Facility Use**  
**\$15 Active Senior Adult Unlimited One Month Pass**

# GROUP FITNESS AEROBICS

AT THE LOGAN COMMUNITY RECREATION CENTER

CENTRAL LOCATION  
 GREAT VARIETY  
 LOW PRICE

Time	Monday	Tuesday	Wednesday	Thursday	Friday	Saturday
5:45 am	Boot Camp (SC) (Upstairs Track)	Power Toning (SC)	HIIT & Tone (JS/SC/LH/KS)	Power Toning (SC)	Bags Class (SC) (Downstairs)	
6:00 am					High Fitness (MD)	
8:15 am	Step, Strengthen, & Stretch (DW)	Yoga/Pilates (DW)	Morning Muscles (DW)	Muscle Conditioning (DW)	Anti-Age (VC)	
8:30 am						Zumba (EH) Dance Fit (JS) Kids Fitness Club (JW)
9:30 am						Yoga (CD/DA/DS/VC) Kids Fitness Club (JW)
10:30 am-12:00 pm						Anti-Age Plus (EH/VC)
12:00 noon	Yoga (CD)		Yoga (CD)		Yoga (CD)	
5:30 pm	Yoga (DS)		Strong By Zumba (EH/VC)	Step & Tone Circuit (DA)		
6:30 pm	Total Body Toning (LH)	Zumba (VC/EH)	Anti-Age (VC)	Zumba (VC/EH)	Salsa and Latin Dance (BS)	
7:30 pm		Yoga (CD)	Yoga (DA)	Yoga Intermediate 7:30-9:00 pm (CD)		
8:30 pm	Step & Sculpt (KS)	Hip Hop Cardio (JS)	Dance Fit (JS)			

Schedule Subject to Change

- |                       |                      |
|-----------------------|----------------------|
| BH = Brandi Horman    | JW = JJ Whicker      |
| BS = Bill Schindelar  | JG = Joyce Gardner   |
| CD = Chelsea Despain  | KS = Kellie Stewart  |
| DA = Debbie Andrew    | LH = Lauren Howell   |
| DS = Dianna Schaffer  | MD = Marianne Dixon  |
| DW = Dorothy Watts    | MP = Mikkal Peterson |
| EH = Ella Heap        | SC = Shauna Carter   |
| GW = Greta Ward (Sub) | SH = Shauna Hillyard |
| HC = Heidi Carlston   | SY = Shauna Young    |
| JS = Jennifer Schmidt | VC = Vera Carlson    |

**Fitness classes from 5:45 am to 8:30 pm**  
**Monday through Saturday. Classes to**  
**accommodate all fitness levels and age groups.**  
**Call or come by and take a class TODAY!**

(June 17, 2019)



Tricks



Rails



Bowls



Boards

# LOGAN CITY SKATE PARK

FOR MORE INFORMATION ABOUT FACILITIES OR PROGRAMS VISIT OR CALL  
500 SOUTH 595 WEST, LOGAN, UTAH 84321 • (435) 716-9250

Parks Superintendent—Ed Stephens • [pr.loganutah.org](http://pr.loganutah.org)

## ONE OF THE BEST IN THE STATE

### AVAILABLE PROGRAMS AND AMENITIES

- Designed for the Beginner, Intermediate, and Advanced Skater
- Eight Foot Bowls
- Open Daily Dawn to Dusk
- 17,000 Square Feet

### SKATE PARK RULES

- OPEN DURING DAYLIGHT HOURS ONLY
- HELMETS AND PADS ARE STRONGLY RECOMMENDED
- NO GLASS CONTAINERS, ALCOHOL, TOBACCO, OR DRUGS
- NO ADDITIONAL OBSTACLES OR MATERIALS
- NO LOUD MUSIC OR OFFENSIVE LANGUAGE
- NO ORGANIZED EVENTS WITHOUT PRIOR WRITTEN APPROVAL
- SCOOTERS ARE PERMITTED
- BIKES ARE NOT PERMITTED
  - THESE CAUSE DAMAGE TO THE CEMENT FRAMEWORK
  - PARK BOWLS AND FEATURES WERE DESIGNED FOR SKATEBOARDS ONLY
- IF A CONFLICT ARISES CONTACT LOGAN CITY DISPATCH AT (435) 753-7555

THIS IS A TOBACCO AND SMOKE FREE ZONE

Enforced by Municipal Ordinance 12.24.040

For more information contact Logan Parks and Recreation at (435) 716-9250

# ZOOTAH

ZOOTAH

FOR MORE INFORMATION ABOUT FACILITIES OR PROGRAMS EMAIL [COMMUNITY@ZOOTAH.ORG](mailto:COMMUNITY@ZOOTAH.ORG), VISIT 419 WEST 700 SOUTH, LOGAN, UTAH 84321 OR CALL • (435) 750-9894

<http://www.zootah.org>

[WWW.FACEBOOK.COM/WILLOWPARKZOO](http://WWW.FACEBOOK.COM/WILLOWPARKZOO)

HOURS CHANGE SEASONALLY  
PLEASE CHECK THE WEBSITE OR FACEBOOK FOR UPDATES

## AVAILABLE PROGRAMS AND AMENITIES

- Lend a Hand
- Utah Certified Museum
- Education Programs Available
- Home to Over 70 Species
- Outreach Presentations
- Special Events

## DAILY ADMISSION

Adults (age 12 and up)	\$5.00
Children age 2–11	\$4.00
Children Under 2	Free

## ANNUAL ZOO MEMBERSHIPS

Individual.....	\$40
Individual Plus One.....	\$50
Family.....	\$60
Grandparents.....	\$60
Family and Friends Circle.....	\$70
Add a Caregiver .....	\$15

Benefactor memberships are available. Call (435) 890-0356.

Passes include discounts to over 60 other zoos in Utah, Idaho, and across the nation.

## FOLLOW US ON FACEBOOK FOR ZOO ACTIVITIES

- Boo at the Zoo (Oct)
- Fall Field Trips
- Public Education Classes
- STEM Fair
- Weekly Storytime
- Zoo Member and Public Appreciation Nights
- Feeding/Trainings
- New Animals/Exhibits
- Scout Nights
- Parents Empowered Event
- Zoo Lights (Dec)

Register for recreation programs at [pr.loganutah.org](http://pr.loganutah.org)



Field Trip



Hyrax

Zootah is managed by the non-profit 501 (C)(3) Willow Park Zoo Foundation. For more information contact Troy Cooper, Zoo Director, at [director@zootah.org](mailto:director@zootah.org) or (435) 890-3039.

## ZOO MISSION STATEMENT

At Zootah, we strive to affect positive change in people's lives, one animal at a time!



# LOOKING FOR A PLACE TO RELAX?



Sleeping Porcupine



Muntjac



Fall at the Zoo

Are you looking for a shady, relaxing place to spend some quality time with your family? Then come on down to Zootah. The park's tall willow, cottonwood, and linden trees provide relief from the hot summer sun while you leisurely stroll across the zoo enjoying the sights and sounds of more than 70 species of native and exotic animals. In addition to our petting zoo, there is a wide variety of activities, animal encounters, and fun for the entire family.

This summer Zootah has partnered with the Bear River Health Department, My Discovery Destination and Parents Empowered of Utah to provide a wide variety of interpretive educational models to strengthen the family's role in teaching their children the dangers of and suggestions for family activities that reduces the risk of underage drinking. So come take a peek at the incredible displays that are stationed throughout the zoo.

Zootah is planning some late summer events including: Parents Empowered Event in August, member nights in August, September and October as well as a public appreciation night in August. Check out our website and Facebook pages for more details on these events.

Fun times at the zoo does not end when school starts in the fall. As a matter of fact there is just as much to do, or more, during the cool, glorious days of autumn. For school teachers- fall field trips can be a great way to teach science to your students. Staff members provide interactive and engaging teaching methods that are sure to be a hit with your class.

We're also planning our annual Boo at the Zoo in October which is a two day event that is fun for all ages. There will be games, activities, and treats for the entire family. Check our website and Facebook pages for more details.

To finish off 2019 the zoo will be open for Zoo Lights during the month of December. You won't want to miss this amazing festival of lights with a touch of Santa and his reindeer mixed in as well. This event just keeps growing with more and more lighted displays, activities, hot chocolate and much more fun. We invite you to bring your friends and family and enjoy a touch of the holiday spirit here at the zoo. Details and times will be posted on our social media accounts or by calling our informational phone line at 435-750-9894.

Sports  
Quotes of  
All-Time

"We love the zoo. It's a great walk with the grandchildren with friendly staff as well. It's a fun small zoo."—Zoo Patron

## WHAT ARE THE ICONS LISTED AT THE END OF EACH PROGRAM DESCRIPTION?

In each issue of the Leisure Guide, Logan Parks and Recreation Department staff have identified programs that provide physical, cognitive, social, and environmental health benefits to individuals and the community. Program health benefits are identified by an icon attached to each program description.

### Physical Benefits:

- Helps Reduce Obesity
- Boosts the Immune System
- Increases Life Expectancy
- Diminishes the Risk of Heart Disease



### Cognitive Benefits:

- Aids in Reducing Depression
- Aids in Relieving Stress
- Helps Improve Self-Esteem
- Aids in Personal Growth



### Social Benefits:

- Strengthens Communities
- Promotes Social Bonds
- Supports Youth



### Environmental Benefits:

- Reduce, Reuse, Recycle
- Promotes Conservation and Preservation
- Encourages Environmental Stewardship



## HOW CAN I GET ACCESS TO A WATER SOURCE IN THE PARK?

Other than drinking fountains, the Logan Parks and Recreation Department does not provide public access to water. We recommend you fill water coolers at home and bring them with you to the park.

## ARE INFLATABLES ALLOWED IN CITY PARKS?

With a \$75 fee, a signed use agreement, proof of insurance, and two week notice—inflatables are permitted. Most inflatable vendors have insurance policies that meet the City of Logan qualifications.

## WHAT SHOULD I DO IF SOMEONE IS USING THE AREA/SPACE I RESERVED?

Have reservation confirmation with you and respectfully inform them that you have paid to reserve the area. If they refuse to move, contact Logan City Dispatch at (435) 753-7555.

## CAN I BRING MY DOG TO MY PARK RESERVATION?

No, dogs are not allowed in City parks unless otherwise noted

## DOES MY PARK RESERVATION INCLUDE THE VOLLEYBALL PIT AND THE PLAYGROUND?

No, reservations only include the pavilion and the tables beneath it. Playgrounds cannot be reserved. Volleyball pits can be reserved for an additional \$10.

## HOW FAR IN ADVANCE CAN I MAKE A PARK RESERVATION?

Parks can be reserved one year in advance, to the date.

## WHEN ARE PARK RESTROOMS OPEN?

Restrooms are open from April 15 through October 15. Restrooms are not constructed for cold weather conditions due to added costs.

## CAN I RESERVE THE LOGAN RIVER GOLF COURSE CLUBHOUSE FOR AN EVENT?

Yes, the Tournament Room seats up to 160 people and is equipped with all the amenities to house events or corporate activities. Reservations can be made by contacting Jeff John or Erik Skinner at the Logan River Golf Course Pro Shop at (435) 750-0123.

## WHAT TIME DOES MY TEAM PLAY?

Adult and youth schedules along with game scores and statistics for adults are posted online. Schedules are also available at the Logan Community Recreation Center, 195 South 100 West, or by calling the front desk at (435) 716-9250.

## HOW DO I FIND OUT IF MY GAME IS CANCELLED DUE TO BAD WEATHER?

Cancellation decisions will be made by 4:00 pm on game day. Cancellation information for adults and youth will be posted on our website on the Recreation Division youth or adult home pages. Cancellation information can also be obtained by calling the Logan Community Recreation Center at (435) 716-9250 or for Adult Softball by calling the Quad at (435) 750-9897 for a pre-recorded message that is updated by 4:00 pm as needed.

## WHEN DO I REGISTER FOR PROGRAMS?

Spring and summer program registration begins March 1. Fall and winter program registration begins August 1.

Sports  
Quotes of  
All-Time

"Persistence can change failure into extraordinary achievement."—Matt Biondi

For more information contact Logan Parks and Recreation at (435) 716-9250

# ARE YOU HOLDING A SPECIAL EVENT ON CITY PROPERTY?



Face Painting



Bike Rodeo



Fun Run

## PLANNING TO HOLD A SPECIAL EVENT AT A CITY PARK OR AT THE RECREATION CENTER?

Most special events require a signed permit from City Hall. The permit application fee is \$75 and the application is available at City Hall or online.

If you have questions about the special event application/permit process, information pamphlets are available at the Logan Community Recreation Center, City Hall, or online.

## NOT SURE IF YOUR SPECIAL EVENT REQUIRES A SPECIAL EVENT PERMIT?

Logan City Municipal Code defines a special event as: “Any short term event at a temporary location that is open to the public for a fee, where the public can participate as a spectator or a participant. Special events shall also include any event available to the public that requires the full or partial closure of the public right of way or the use of City property whether or not a fee is required. Specials events include, but are not limited to, races, concerts, dances, exhibitions, lectures, parades, or other types of entertainment.” §5.04.010

## QUESTIONS REGARDING SPECIAL EVENTS?

For questions regarding special events to be held at the Logan Community Recreation Center or in a Logan City park, contact (435) 716-9241. For questions regarding special events at any other location, contact (435) 716-9025.

Register for [recreation programs](https://recreationprograms.pr.loganutah.org) at [pr.loganutah.org](https://pr.loganutah.org)

# LOGAN CITY CEMETERY

FOR MORE INFORMATION ABOUT FACILITIES VISIT OR CALL  
1000 NORTH 1200 EAST, LOGAN, UTAH 84321 • (435) 750-9895

pr.loganutah.org • Cemetery Sexton—Justin Allen

ESTABLISHED IN 1865

## INFORMATION

The cemetery has 53 acres of land with about 47 of those acres occupied. There were 264 grave spaces sold and 205 burials from July 1, 2018 through June 30, 2019.

Approximately 7,800 burial spaces are available for purchase.

## HOURS OF OPERATION

- The cemetery grounds are open every day, from dawn until dusk.
- The cemetery office is open Monday through Friday, 7:30 am–4:00 pm and closed on legal holidays.

## LOCATING A GRAVE

- A map and a self-help burial directory are located on the east side of the office building.
- Burial information is online at [namesinstone.com](http://namesinstone.com).

## FEES

	Fee	Military/Veteran Fee
Burial Space	\$750	\$650
Infant/Half Space	\$200	N/A
Cremation Space	\$750	\$650
Open/Close Weekday	\$625	\$525
Open/Close Saturday	\$1,200	\$1,100
Infant Open/Close Weekday	\$300	N/A
Infant Open/Close Saturday	\$350	N/A
Cremation Open/Close Weekday	\$350	\$300
Cremation Open/Close Saturday	\$400	\$350
Additional Charge after 4:00 pm	\$350	\$350
Deed Transfer	\$60	\$60
Upright Headstone Installation	\$100	\$100
Flat Headstone Installation	\$25	\$25
Deed Transfer	\$60	\$60

**FEES ARE SUBJECT TO CHANGE**



Larson Lego Headstone



Kay's Fudge Recipe Headstone

## HISTORICAL WALKING TOUR

[pr.loganutah.org](http://pr.loganutah.org)



Bindrup Lions



Poet May Swenson Headstone

# CEMETERY INFORMATION



Welcome



Cemetery



Cemetery

## INTERMENT

Funeral directors and responsible party are accountable for the observance of all the rules and regulations contained herein concerning funerals and burials. Interments are limited to deceased humans and will be made only upon the written order of the owner of the space or of persons legally representing the owner. Charges and directions for all interments must be given to the Cemetery Sexton and confirmed in writing. The City of Logan shall not be responsible for any mistakes occurring from the lack of precise and proper instructions as to the proper space where interment is desired. When instructions regarding the location of a grave cannot be obtained or are indefinite, or for any reason the grave cannot be opened where specified, the Sexton may, in his discretion, open it in a location he deems best and proper so as not to delay the funeral and affect the interment. No interment will be permitted, or remains received unless the proper certificate or permit required by law or ordinance is furnished.

Removals and interments shipped from another location must be accompanied by a similar permit. If there is an existing headstone on the burial space, the responsible party must make arrangements for removal and pay for these services prior to the grave being opened. Logan City does not move headstones.

## SCHEDULING A GRAVE OPENING

All interments and graveside services must be scheduled and completed under the direction of the Cemetery Sexton. The Logan City Cemetery can typically accommodate a maximum of four burials per day; however, the Sexton reserves the right to adjust the maximum based on the type and/or scheduled time of the burial. When scheduling an interment or service, the directing funeral home must provide the Sexton **48-hour notice in advance of the day of the burial. Saturday burials must be scheduled by noon on Thursday. If there is an intervening Sunday or holiday, arrangements must be made at least 72 hours in advance.** The directing funeral home must provide the following information:

- Name, birth date, birthplace, death date, and names of mother and father of the deceased
- Burial location
- Date, time, and location of funeral services

The Sexton can be contacted via phone, email, or in person at the Logan City Cemetery.

Sports  
Quotes of  
All-Time

"Nobody who ever gave his best regretted it."—George Halas

# THANK YOU FOR YOUR COMMUNITY SERVICE

## VOLUNTEER POOP SCOOP TROOP

Logan Parks and Recreation Department, along with Mayor Holly Daines and a host of volunteers, cleaned selected Logan City trails the week of March 18-23, 2019. This volunteer clean-up effort was organized to remove dog feces from City parks and trails before a one year Dog Friendly Parks pilot program began on April 15 allowing dogs in selected City parks.

Poop Troop Clean-up week trails included Canyon Road Canal Trail, Stewart Nature Park Trail, Logan River Trail, Lundstrom Park Canal Trail, Bonneville Shoreline Trail, Highline Trail, and the Gateway trail.

The first 50 people received a free limited-edition volunteer t-shirt. Trash bags and buckets were provided.



Poop Scoop Troop Clean-up Project

## STEWART NATURE PARK

A group of volunteers planted native shrubs at Stewart Nature Park on Saturday, April 13, 2019.



Stewart Nature Park Project

## LOGAN CITY CEMETERY

A group of student and teacher volunteers from Edith Bowen Laboratory School planted trees and did some clean-up at the Logan City Cemetery in conjunction with Earth Day on Monday, April 22, 2019.

Health Benefit:



Sports  
Quotes of  
All-Time

"When you win, say nothing, when you lose, say less."—Paul Brown



Jens Johansen Sod Project

Register for [recreation programs](https://recreation.loganutah.org) at [pr.loganutah.org](https://pr.loganutah.org)

# 2019 VOLUNTEER APPRECIATION FAMILY SWIM NIGHT



**THANK YOU  
VOLUNTEERS**

**WHEN:**  
Saturday, September 7  
12 noon-4:00 pm

**WHAT:**  
Swimming, Prizes, T-shirts, Face  
Painting, and Food

**WHERE:**  
Logan Aquatic Center,  
451 South 500 West

**QUESTIONS:**  
Contact Dan Blakely at (435) 716-9247,  
dan.blakely@loganutah.org or  
Nathan Swartz at (435) 716-9245,  
nathan.swartz@loganutah.org

**SPONSORED BY: IBF/Factory Pizza**

**VOLUNTEER APPRECIATION POOL PARTY**



**LOGAN PARKS AND RECREATION DEPARTMENT**  
195 SOUTH 100 WEST



[pr.loganutah.org](http://pr.loganutah.org)

# FALL FAMILY PLAYGROUND BUCKET LIST CHALLENGE

## COME PLAY

Join us for the Logan Parks and Recreation Department Family Playground Bucket List Challenge! Romp and stomp on all 21 of our outdoor playgrounds!

- Grab your Family Playground Bucket List Challenge check off sheet from the Logan Community Recreation Center, 195 South 100 West, or online at [pr.loganutah.org](http://pr.loganutah.org)
- Check off the parks when you visit and play on each playground
- If you would like to have your Family Playground Bucket List Challenge photo on the Logan City Facebook page please email them to [debbie.harvey@loganutah.org](mailto:debbie.harvey@loganutah.org)
- Return your completed check off sheet to the Logan Community Recreation Center to redeem your prize and be entered into a drawing for a chance to win an iFit Band or a Logan Aquatic Center family pool pass
- One drawing entry per family
- Program begins August 1, 2019
- Deadline to enter is October 15, 2019
- When taking photos use the hashtags: [#loganutah](#) [#creatingcommunity](#)

Sports  
Quotes of  
All-Time

"Always make a total effort, even when the odds are against you."—Arnold Palmer



Bridger Park Playground



Lundstrom Park Playground



Willard R. Dahle Memorial Park Playground

For more information contact Logan Parks and Recreation at (435) 716-9250

# RAPZ TAX PROJECTS UPDATE



Canyon Connector Trail

### CANYON CONNECTOR TRAIL

This vital multi-use trail link between 1500 East and the Bonneville Shoreline Trail along US 89 was completed on May 23, 2019. The Canyon Connector Trail connects to a trail corridor constructed by Utah State University at the intersection of 1500 East 700 North near the Logan Golf and Country Club. The trail was a collaborative effort between the City of Logan, Utah State University, Logan Golf and Country Club, and UDOT. The 2,300 linear-foot trail was designed by Cache Landmark of Logan and constructed by Whitaker Construction.

### BRIDGER BIKE PARK CONSTRUCTION

2.5 acre Mountain Bike and BMX Skills Facility. The Bridger Bike Park construction began July 22. The bike park facility includes berms, table top jumps, rollers, kicker ramp, large rock garden, skinny straight ladder and zigzag offset, rock ledge stack/podium step-ups, trails, and a start hill. The facility is designed for beginner, intermediate, and advanced bikers. A pavilion will be built by the City at a future date. Completion of the bike park is projected for mid-September. This project is funded in part by the City of Logan, Cache County RAPZ Tax Program, Utah Outdoor Recreation Grant, and the Cache Trails Alliance.

### DAHLE MEMORIAL PARK RESTROOM CONSTRUCTION

Construction of a restroom for Willard R. Dahle Memorial Park will begin later this summer and is projected to be operational for the 2020 summer season. Dahle Memorial Park is located at 850 West 1230 South in Logan. Other amenities at Dahle Memorial Park include a playground, picnic pavilion, volleyball pit, basketball court, and a grass field area. The park is located near Logan River Golf Course and the Logan River Trail.

### TRAIL CONNECTION AND PARK LANDSCAPING AT 100 SOUTH LOGAN RIVER

Last year a new pedestrian/City maintenance-only access bridge was constructed at the end of 100 South near River Circle Drive. Now a trail connection will be built to connect 100 South with Johnson Cove Drive and Stewart Nature Park. The park landscaping site is east of the new bridge and will include grass areas and shade trees, a few picnic tables, and a future restroom in addition to the trail between 100 South and Johnson Cove Drive. Site work will continue into next summer.

### LOGAN RIVER TRAIL RAILROAD CROSSING

Preparations are being made this summer for construction of the Logan River Trail railroad crossing at US 89-91 near Rendezvous Park in Logan. The project involves a separated safety crossing through the Union Pacific Railroad right-of-way for trail users. In addition to the US 89-91 project, pedestrian crossing improvements will also be made at 400 South near the Logan Aquatic Center, and Park Avenue (600 West) between 300 South and 400 South in Logan. This project is a collaboration between Union Pacific Railroad, UDOT, and the City of Logan. Site work will continue into next summer.



Stewart Nature Park Bridge



Logan River Trail Railroad Crossing

Sports  
Quotes of  
All-Time

“You have to expect things of yourself before you can do them.”—Michael Jordan

## NRPA PARK PULSE

### Americans' Top Outdoor Recreation Activities

PICNICS	58%
SWIMMING	48%
WALKING	45%

#### OTHER POPULAR OUTDOOR RECREATION ACTIVITIES INCLUDE:

Community  
social events  
38%

Attending performing  
arts events  
32%

Camping  
30%

Playing in team  
sports or leagues  
12%

Playing racquet  
sports  
11%

Running/Cycling  
races  
10%



Each month, through a poll of Americans that is focused on park and recreation issues, NRPA Park Pulse helps tell the park and recreation story. Questions span from the serious to the more lighthearted. The survey was conducted by Wakefield Research ([www.wakefieldresearch.com](http://www.wakefieldresearch.com)).

Visit [nrpa.org/Park-Pulse](http://nrpa.org/Park-Pulse) for more information.



**NRPA** National Recreation  
and Park Association  
*Because everyone deserves a great park*

## NRPA PARK PULSE

### WE ASKED THE PUBLIC:

*How much do you agree or disagree that having easy access to low-cost/no-cost fitness and educational opportunities, such as those at local recreation or community centers, enhance your community?*



**91%** of Americans believe their community is enhanced by having easy access to their local recreation or community centers.

People of all ages agree that access to these spaces enhances communities:

Millennials



Gen Xers and Baby Boomers



Seniors ages 65+



Each month, through a poll of Americans that is focused on park and recreation issues, NRPA Park Pulse helps tell the park and recreation story. Questions span from the serious to the more lighthearted. The survey was conducted by Wakefield Research ([www.wakefieldresearch.com](http://www.wakefieldresearch.com)).

Visit [www.nrpa.org/Park-Pulse](http://www.nrpa.org/Park-Pulse) for more information.

For more information contact Logan Parks and Recreation at (435) 716-9250



ADDING A  
**SPLASH**  
 OF  
**COLOR**  
 ONE JOB  
 AT A TIME



square**one**printing

435.753.8875 • 630 West 200 North | Logan, Utah • sq1.biz

Sports  
 Quotes of  
 All-Time

"During my 18 years I came to bat almost 10,000 times. I struck out about 1,700 times and walked maybe 1,800 times. You figure a ballplayer will average about 500 at bats a season. That means I played seven years without ever hitting the ball."—Mickey Mantle

Register for [recreation programs](https://www.recreationprograms.org) at [pr.loganutah.org](https://pr.loganutah.org)