



# CITY OF LOGAN REDEVELOPMENT AGENCY

**Resolution  
No. 18-39 RDA**

## **A RESOLUTION APPROVING AGENCY ASSISTANCE FOR A ROAD MEDIAN IMPROVEMENT PROJECT IN THE SOUTH MAIN REDEVELOPMENT PROJECT AREA (RDA)**

**WHEREAS**, the City of Logan has adopted policies for assistance in projects and improvements in Redevelopment and Economic Development Project Areas; and

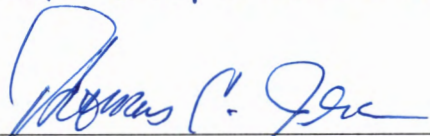
**WHEREAS**, the Redevelopment Agency of the City of Logan previously funded landscaping improvements at the location commonly referred to as the “Y” at the juncture of Highway 89/91 and S.R. 165 and which improvements consisted of beautifying the medians by replacing the asphalt with low-maintenance plant and other landscaping material; and

**WHEREAS**, the proposed Road Median Improvement Project (“Project”) will effectively restore the plant and other landscaping material which is to be removed as part of a broader project to enhance pedestrian circulation along South Main Street with the addition or relocation of new sidewalks, crosswalks, light poles, and traffic signals and which will impact the medians;

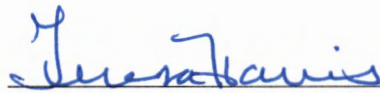
**NOW THEREFORE BE IT RESOLVED**, that the Redevelopment Agency of the City of Logan does hereby resolve to appropriate an estimated \$17,178 for the “Project” for the work outlined in the attached landscape plan.

This resolution duly adopted upon this 4 day of September 2018, by the following vote:

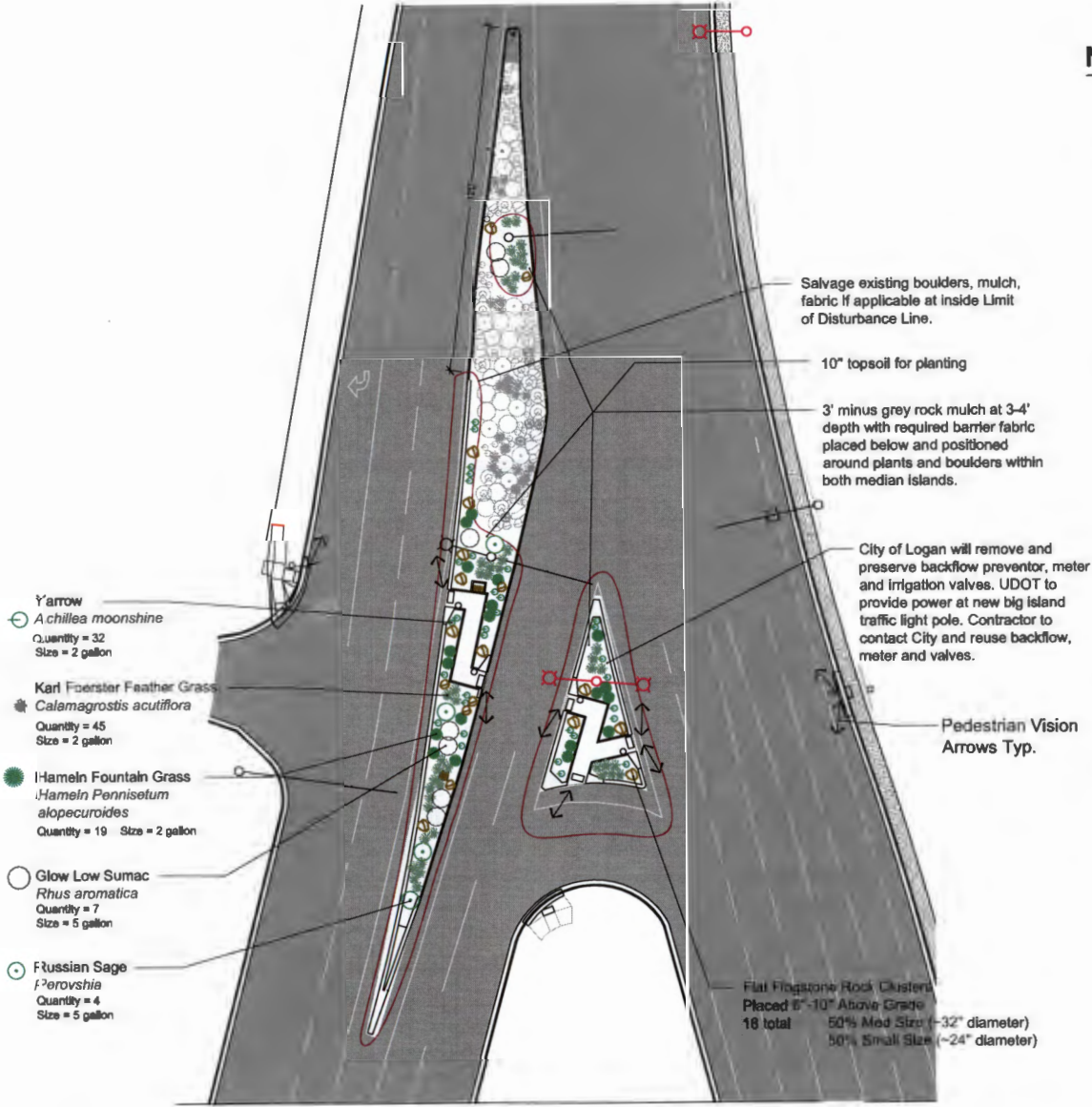
Ayes: *Anderson, Bradfield, Jensen, Olson, Simmonds*  
Nays: *none*  
Absent: *none*

  
\_\_\_\_\_  
Thomas C. Jensen, Chair  
Redevelopment Agency

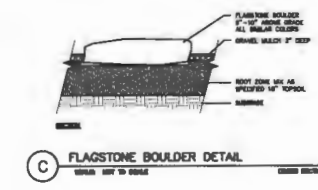
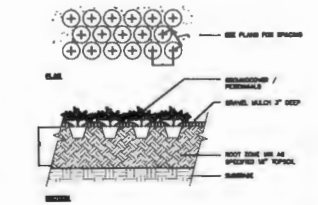
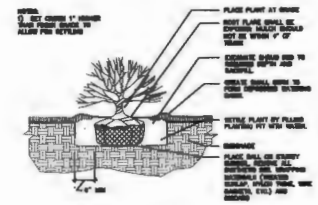
Attest:

  
\_\_\_\_\_  
Teresa Harris, City Recorder





## New Landscape Plan Details and Notes



- NOTES:**
1. All plant material taller than 18" shall be planted outside of site distance lines.
  2. UDOT approved barrier fabric shall be used to separate top soil from adjacent road base material below the travel lanes and shoulders on HWY 89/91.
  3. Refer to limit of disturbance plan prior to planting plan.
  4. Drip Irrigation shall be used to increase watering efficiency and reduce over-spray onto the adjacent Highway.
  5. A flow sensor shall be used on the irrigation system to automatically shut down the system in the event of a break to eliminate the risk of road sub structure failure.
  6. 3" minus greyish-brownish gravel mulch to be placed in planter areas at a depth of 3" with weed barrier fabric placed underneath.
  7. In areas of flagstone stone pockets use large flat (flagstone) to give appearance of large buried boulders (no more than 6-10" is visible above grade).
  8. Contractor shall obtain applicable UDOT permits, including traffic control, to construct landscaping inside the Right-Of-Way.
  9. Contractor shall supply UDOT with an irrigation plan for approval as part of the UDOT permitting process.
  12. Plant quantities shall match plans.
  13. Contractor to provide electrical connection for irrigation controller.
  14. Irrigation sleeves will be provided by UDOT contractor

SCALE 1-40 NORTH

Revisions

0

0

0

**"Y" Intersection**  
New Landscape Plan (Post Crosswalks)

Drawn By  
Approved By RH MD

Prepared For

**LOGAN**  
CITY UNITED IN SERVICE

Date  
AUG/11/2018

Sheet Number  
V2

**L-P1**

Bid Alternative 2