

**CITY OF LOGAN
RESOLUTION 18-21**

**A RESOLUTION BY THE CITY OF LOGAN APPROVING AN ADJUSTMENT OF
SOLID WASTE COLLECTION AND DISPOSAL FEES AND
MANDATORY CURBSIDE RECYCLING.**

WHEREAS, the Solid Waste Advisory Board, was formed to advise the Board of Trustees of Cache County Service Area No. 1 regarding solid waste collection and disposal

WHEREAS, the Board and Cache County Council recognizes the need to adjust the solid waste rates to address the operation of the North Valley Landfill, Transfer Station and Transfer Haul.

WHEREAS, the Board and Cache County Council recognizes the need to adjust the solid waste rates to address the operation of the North Valley Landfill, Transfer Station and Transfer Haul.

WHEREAS, the Logan City Council recognizes the need to adjust the solid waste rates to address the operation of the North Valley Landfill, Transfer Station and Transfer Haul.

BE IT RESOLVED by Logan City Council:

Section 1. Residential Garbage Pickup (includes landfill tipping fees (TF) unless otherwise noted).

Logan City		
90 gallon	\$12.65 14.15	per month \$1.50 Increase
Extra pick up	\$3.87 ea container	No Change
60 gallon (minimum fee)	\$10.50 11.90	per month \$1.40 Increase

The minimum fee for multi-family dwelling units serviced by commercial bins, shall be the 60 gallon rate plus recycling, multiplied by the number of dwelling units.

Special Pickup/Bulky Waste Charge	\$20.00 plus TF (except green waste)
-----------------------------------	--------------------------------------

Cache County		
90 gallon	\$13.25 15.15	per month \$1.90 Increase
Extra pick up	\$4.19 ea. container	No Change
60 gallon	\$11.00 12.90	per month \$1.90 Increase

The minimum fee for multi-family dwelling units serviced by commercial bins, shall be the 60 gallon rate plus recycling, multiplied by the number of dwelling units.

Special Pickup/Bulky Waste Charge	\$26.00 plus TF (except green waste)
-----------------------------------	--------------------------------------

Section 2. Commercial Garbage Pickup

a. Front Load Refuse hauled by Service Area	\$5.40 cu. yd. per pickup
2 yard bins	\$6.59 cu yd per pickup 22% Increase
3 and 4 yard bins	\$5.67 cu yd per pickup 5% Increase
6 and 8 yard bins	\$5.57 cy yd per pickup 3% Increase

Bin Size (yards)	Frequency (Empties/Week)					
	1	2	3	4	5	6
2	\$ 57.11	\$ 114.23	\$ 171.34	\$ 228.45	\$ 285.57	\$ 342.68
3	\$ 73.71	\$ 147.42	\$ 221.13	\$ 294.84	\$ 368.55	\$ 442.26
4	\$ 98.28	\$ 196.56	\$ 294.84	\$ 393.12	\$ 491.40	\$ 589.68
6	\$ 144.82	\$ 289.64	\$ 434.46	\$ 579.28	\$ 724.10	\$ 868.92
8	\$ 193.09	\$ 386.19	\$ 579.28	\$ 772.37	\$ 965.47	\$ 1,158.56

b. Temporary Dumpster Rental

Front Load Rental Fee
Collection/Disposal Fee

\$10.00 weekly or \$1.43 daily
Same as Section 2(a)

Roll-off Rental Fee (beginning day 15 of rental)
Collection/Disposal Fee

\$40.00 weekly or \$5.71 daily
Same as Section 2(c)

c. Roll-off Refuse

Each Pickup

~~\$123.75~~ \$126.00 each \$2.25 Increase
Plus, Applicable TF

d. Minimum Commercial Fee

Logan City

\$ ~~12.65~~ \$14.15 per month

Cache County

\$ ~~13.25~~ \$15.15 per month

* ED: Environmental Department

Section 3. New Home Automated Container (A.C.) Service Fee.

Delivery of A.C. in Logan City – for any number of containers	\$20.00
Delivery of A.C. in Cache County – for any number of containers	\$26.00
Delivery of A.C. by customer	\$5.00

Section 4. Landfill Tipping Fees (TF).

Car or truck up to ¾ ton	\$10.00	No Change
Small single axle trailer	\$10.00	No Change
Dual axle trailer and trucks larger than ¾ ton		Applicable TF
General refuse	\$29.00 \$34.50/ton	\$5.50 Increase
Construction debris & tree stumps	\$21.00 \$30.00/ton	\$9.00 Increase
Uncovered or otherwise unsecured loads	Additional fee	\$10.00

Section 5. Recyclable Item Fees.

a. Tire (size measured by inside diameter)

15 inches or less	\$2.00 ea.
Larger than 15 but less than 20 inches	\$5.00 ea.
20 to 25 inches	\$10.00 ea.
Over 25 inches	\$100.00 ea.
Tires with rim, additional	\$5.00 ea

b. Pallets

~~Clean to go to Green Waste Facility~~ \$9.00 per ton

Note: There is no charge for separated, recyclable items such as newspaper, ferrous metals, aluminum, carpet pad, used oil, and compostable waste trimmings.

Section 6. Special Handling Fees (SHF).

a. Medical and Infectious Waste

~~Minimum Fee: \$17.00 up to 0.5 cubic yard or 100 gallons in Volume, standard size "Black Beauty" dumpster \$8.00 cu. yd.~~

Loads greater than 1 cubic yards \$17.00/cu. yd.

b. Hydrocarbon contaminated soil fees

(1000 ppm in accordance with landfill hazardous waste disposal procedures) Applicable TF plus \$17.50/ton

c. Household refrigerators, freezers, air conditioners

or other appliances originally having contained refrigerant which are not certified and marked as having been legally evacuated. \$30.00 SHF ea unit

d. Sludge

Applicable TF Plus \$17.50 ton/SHF

e. Any other items requiring special handling

Applicable TF Plus \$17.50ton/SHF

f. Metal bottles or other containers which are or have been pressurized, including but not limited to propane bottles and fire extinguishers.

\$10.00 SHF ea. Unit

g. Asbestos & asbestos contaminated materials

\$500.00/ton

Section 7. Dead Animal Fees

Animal disposal for farmers is free

Section 8. Residential Curbside Green Waste Collection (April – November)

Logan, Smithfield, North Logan, Providence, Hyde Park, River Heights, Millville, Nibley, Hyrum.....

90 Gallon

~~\$4.00~~ \$5.00 per month
(12-month billing period)

Section 9. Green Waste Facility Product Pricing (includes sales tax)

Finished Compost	\$20.00/cu. yd.
Coarse Wood Chips	\$8.00/cu. yd.
Medium Wood Chips	\$12.00/cu. yd.
Pallet Wood Chips	\$10.00/cu. yd.
Premium Wood Chips	\$15.00/cu. yd.
Christmas Tree Wood Chips	\$10.00/cu.yd.
Firewood	\$10.00 per cord
Colored Chips	\$30.00/cu.yd.
Bagged Compost	\$1.50/1 cu.ft.

Section 10. Commercial/Curbside Recycling Collection

Countywide Mandatory
Curbside Recycling

\$3.00 per resident per month, once
every other week pick up

a. Roll-off Recyclables

Each Pick up (Green Waste, Other Recyclables)

\$45.00 each
If, ED* receives recycling
revenue

Each Pick up (cardboard)

\$ 0.00 each
If, ED* receives recycling
revenue

b. Roll-off Cardboard and other recyclables

~~\$123.75~~ \$126.00/per pick-up
no rebate to ED

c. Front Load Cardboard

\$0.00 each
If, ED* receives recycling
revenue

d. Front Load Mixed recycling and other recyclables

~~\$6.00~~ \$6.60/yard - Every
Other Week Pick-Up
(~~\$12.00~~ \$13.20/yard Week)

Bin Size (yards)	Frequency (Empties/Week)	
	bi-weekly	1
4	\$ 26.40	\$ 52.80
6	\$ 39.60	\$ 79.20

Section 11. Spring Cleanup/Green Waste Drop Site

Provide one time spring clean up for every community, or keep the green waste drop site/s at a location identified and monitored by the local community, or credit \$2.15 per residential customer per year to the local community for green waste management

Section 12. Hardship Allowance

Cache County Residential customers may apply for reduced recycling rate annually on the basis of hardship through the Solid Waste Advisory Board.

Section 13. Special Event Rates (SER), also see attached letter

Residential Containers

Logan

\$3.15 per empty

All Other Areas outside of Logan

\$3.30 per empty

For all services provide two times the requested numbers of containers or charge ½ of the amount of containers.

Commercial Containers

For all SER commercial services the rate is the same as shown in section 4 except no rental fee and the size of the container will be double the size of the requested container or the charge will be ½ of the service fee.

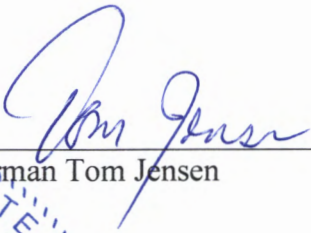
The effective date of this resolution shall be July 1, 2018

THIS RESOLUTION duly adopted upon this 5 day of June, 2018 by the following vote:

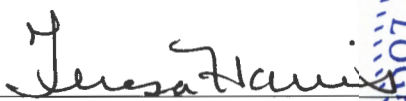
Ayes: Anderson, Bradfield, Jensen, Olsen, Simmonds

Nays: none

Absent: none


Chairman Tom Jensen

Attest:


Teresa Harris

City Recorder



SOLID WASTE COST OF SERVICE/RATE STUDY – EXECUTIVE SUMMARY

CACHE COUNTY COUNCIL PRESENTATION APRIL 17, 2018

1. BACKGROUND AND INTRODUCTION

In recent years, the City of Logan (City) has constructed state of the art facilities to accommodate the management of refuse, recycling and green waste collection and disposal for all of Cache County. With the startup operations of the new transfer station and second landfill site, the utility needed to identify costs associated with all services offered and assure that revenue generated by rates would sufficiently recover depleted reserves used for the development of these facilities as well as cover the department's needs over the next decade. MSW Consultants was hired to conduct a cost of service study to conclude with a recommend rate path to accomplish this objective. The recommended rates have been reviewed and accepted by the Solid Waste Advisory Board (SWAB).

2. FINDINGS

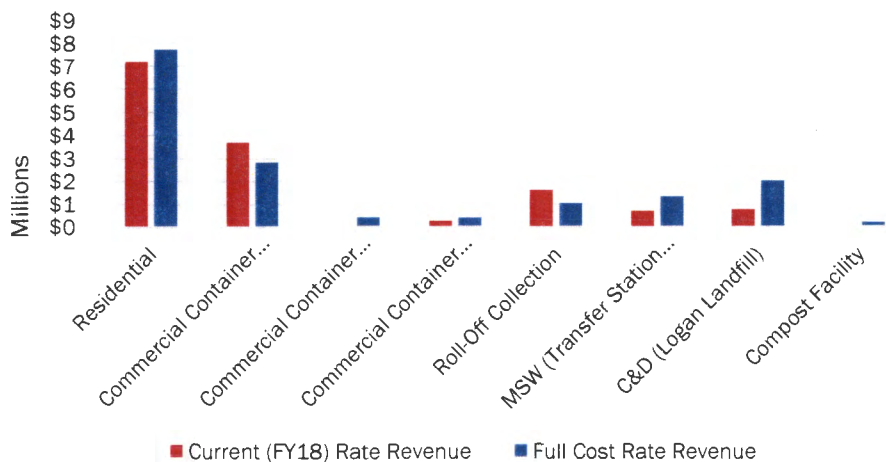
As shown in Table 2-1, the current rates will not generate enough revenue to fund the system, instead resulting in a deficit of \$1.5 million or 9.5 percent.

Table 2-1 System Surplus (Deficit)

Item	Dollars	Percent
Current Revenues	\$14,335,114	90.5%
Full Cost	\$15,837,687	100.0%
Surplus (Deficit)	(\$1,502,573)	-9.5%

A detailed breakdown of revenue sufficiency by service is shown in Figure 2-1.

Figure 2-1 Revenue Sufficiency Under Existing Rates



The recommended rate change is intended to be a single year event in FY19. There will be no further rate increases for the next five years, as displayed in Table 2-2.

Table 2-2 Anticipated Rate Path for Next 5 Years

	2020	2021	2022	2023	2024
Anticipated Rate Increase	0%	0%	0%	0%	0%

EXECUTIVE SUMMARY

Key rates within this recommendation are contained in Table 2-3 and Table 2-4 below.

Table 2-3 Recommended Residential & Commercial Cart Rates and Facility Tip Fees

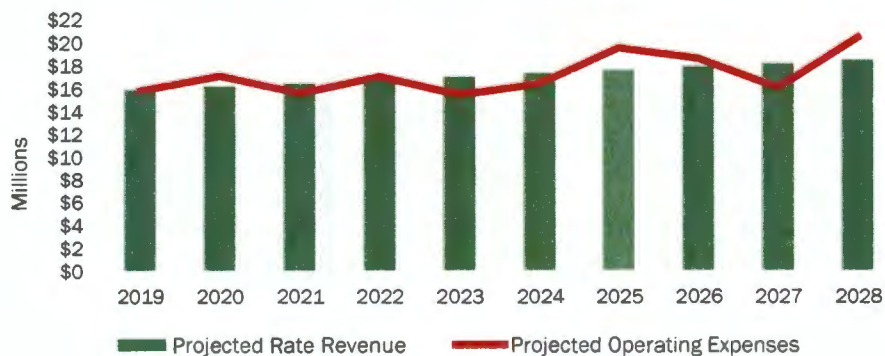
Customer Class	Description	Existing Rate	Recommended Rate	Percent Change
Residential	Logan-Refuse 60-Gal & Recycling 90-Gal 1x/wk	\$13.50	\$14.90	10.4%
	Logan-Refuse 90-Gal & Recycling 90-Gal 1x/wk	\$15.65	\$17.15	9.6%
	Cache Co-Refuse 60-Gal & Recycling 90-Gal 1x/wk	\$14.00	\$15.90	13.6%
	Cache Co-Refuse 90-Gal & Recycling 90-Gal 1x/wk	\$16.25	\$18.15	11.7%
	Logan-Green Waste Curb Collection	\$4.00	\$5.00	25.0%
	Cache Co-Green Waste Curb Collection	\$4.00	\$6.00	50.0%
Commercial	Logan-Commercial Refuse 90-Gallon 1x/wk	\$12.65	\$23.85	88.5%
	Cache Co-Commercial Refuse 90-Gallon 1x/wk	\$13.25	\$25.10	89.4%
Roll-off	Refuse Roll-Off (per Haul)	\$123.75	\$126.00	1.8%
	Pallet/Mixed Recycling/Plastics/Metals (per Haul)	\$45.00	\$47.50	5.6%
Tip Fees	General Refuse (per Ton)	\$29.00	\$34.50	19.0%
	Construction and Demolition Debris (per Ton)	\$21.00	\$30.00	42.9%
	Clean Green Waste Material (per Ton)	\$0.00	\$0.00	N/A

Table 2-4 Recommended Commercial Dumpster Rates

Size	Frequency						Percent Change
	1x/wk	2x/wk	3x/wk	4x/wk	5x/wk	6x/wk	
2	\$57.10	\$114.19	\$171.29	\$228.38	\$285.48	\$342.58	22.0%
3	\$73.71	\$147.42	\$221.13	\$294.84	\$368.55	\$442.26	5.0%
4	\$98.28	\$196.56	\$294.84	\$393.12	\$491.40	\$589.68	5.0%
6	\$144.61	\$289.22	\$433.84	\$578.45	\$723.06	\$867.67	3.0%
8	\$192.82	\$385.63	\$578.45	\$771.26	\$964.08	\$1,156.90	3.0%

The projected operating results are presented in Figure 2-2. As a result of these rate increases, the City will continue to meet County-wide waste management needs, while meeting capital, vehicle replacement and landfill closure/post-closure funding needs as well as operating reserve policies over the next decade.

Figure 2-2 Projected Operating Results



City of Logan Solid Waste Cost-of-Service and Rate Study Results

PRESENTED TO
CACHE COUNTY COUNCIL

APRIL 17, 2018



Introduction



www.mswconsultants.com

- Serving the municipal waste and recycling industry
- Local government focus
- National client base
- Operationally informed financial, policy, and market analysis

Topics



- Project Summary
- Cost-of-Service and Rate Study
- Revenue Sufficiency
- Rate Options
- Next Steps

Project Summary



Project Tasks

- **Assembly and Review of System Data**
 - Financial
 - Tonnage
 - Customer Base
 - Operational
- **Benchmarking Research**
- **Field Observations**
 - Collection Operating Audits
 - Facility Tours
- **Rate Study**
 - Revenue Needs Analysis
 - Cost-of-Service
 - Rate Design and Recommendations

Benchmarking Research

- **City of Logan solid waste system compared to six cities of comparable population**
 - Ogden, Orem, Provo, West Jordan, West Valley, Idaho Falls (ID)
- **Logan provides excellent service**
 - Relatively higher service level compared to peers
 - Owns all services and facilities except MRF
 - High quality facilities
 - "Free" Services to User
 - Community Drop-offs throughout County
 - Green Waste Drop-offs
 - Commercial Cardboard recycling collection

Collection System Observations

- Productivity levels meet industry norms
- Geographically distributed customer base
 - High density
 - Rural
- Premium services provided for no charge
 - Locked container
 - Excessive backing



Solid Waste Facilities



Compost Facility



Logan Landfill



North Valley Landfill



Key Observations

- Comprehensive, vertically integrated system serving all of Cache County
- Conservative financial management has provided high service levels at a competitive cost to rate payers
- Significant investment in solid waste infrastructure over past several years
- Depleted operating reserves, plus new facility infrastructure, has increased full costs
- Last rate increase in 2006!!!

Cost-of-Service and Rate Model

Solid Waste System Functions

Function

Management & Administration

Collection

Automated Refuse
Automated Recycling
Automated Yard Waste
Bulky Waste
Commercial Container Refuse
Commercial Container OCC
Commercial Container Mixed Recycling
Roll-Off Collection

Facilities

Logan Landfill
Compost Facility
HHW Facility
New Transfer Station
Transfer Haul
North Valley Landfill

Greenwaste/Forestry

Out of System

Components of System Full Cost

• Operational Obligations

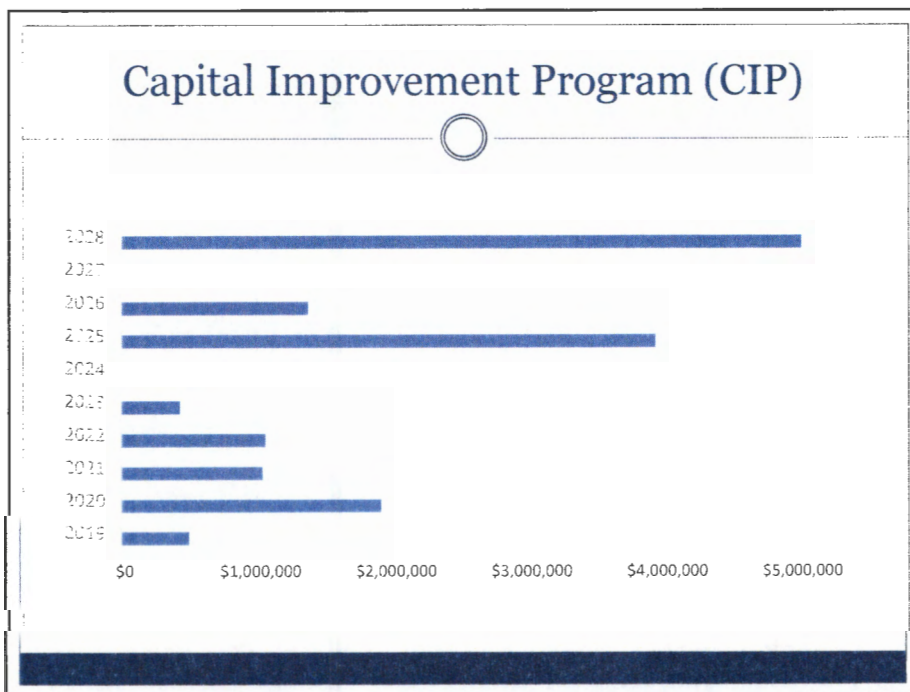
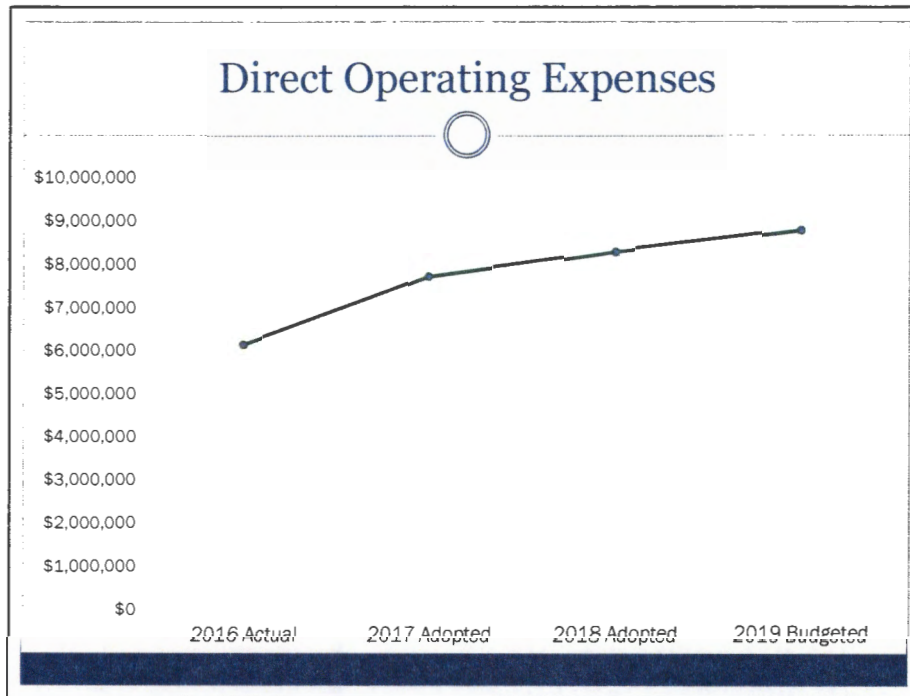
Projected Direct Operating Expense
Capital Improvement Program
Landfill Closure and Post-Closure
Equipment Replacement

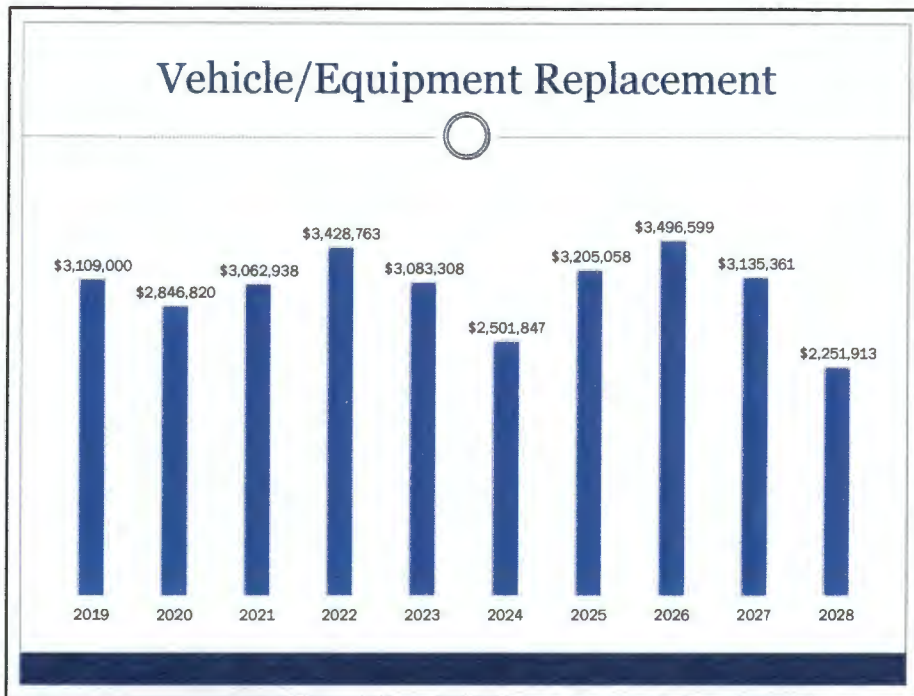
• System Expenses

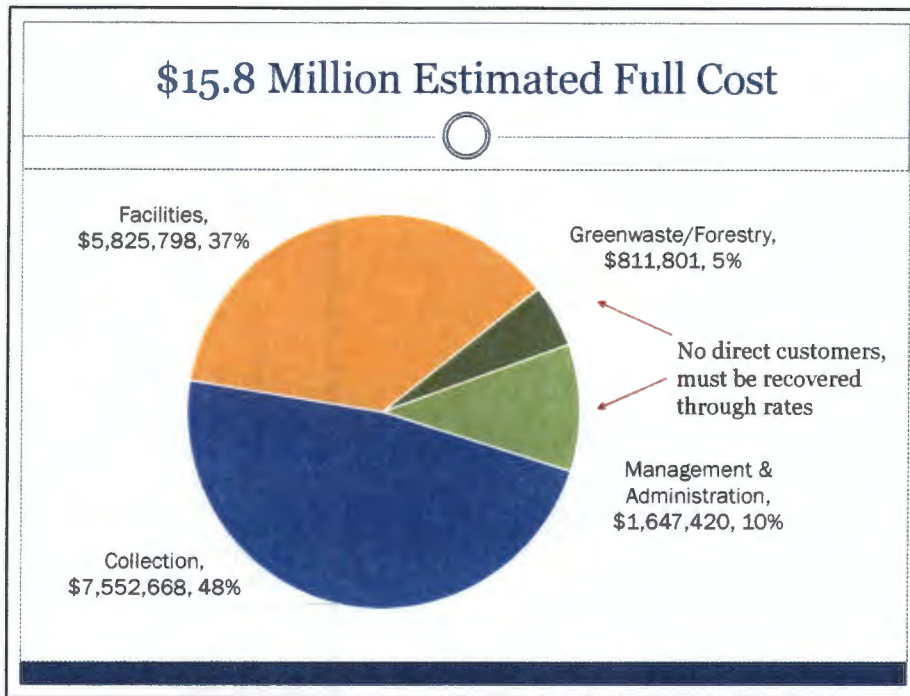
General Fund Transfer
Administrative Fee
Expense

• Not recovered through solid waste rates

911 Communications Fee
Pre-treatment

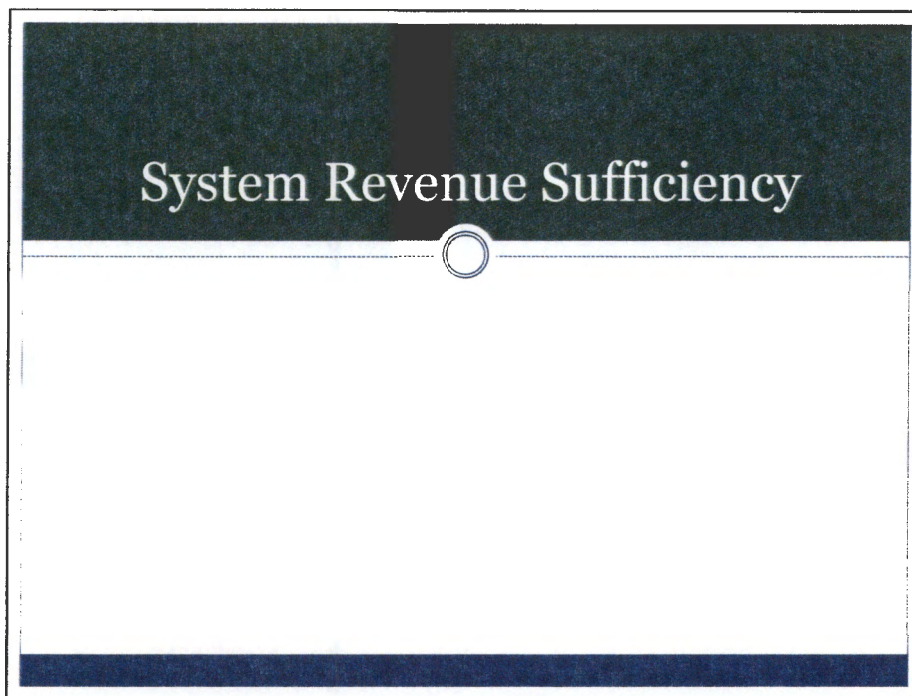




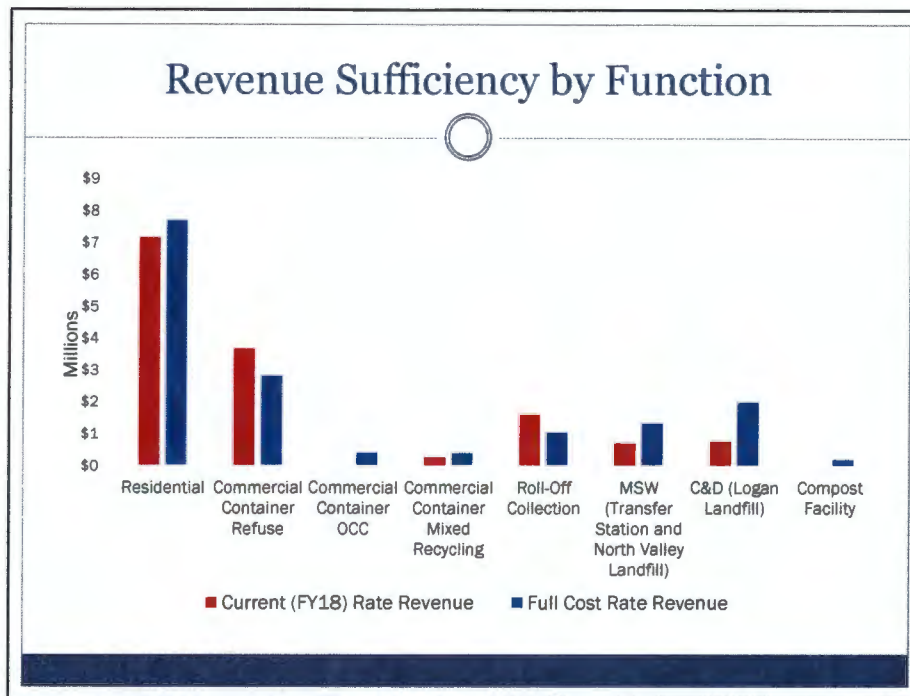


Allocated Cost of Service

Function	Annual Revenue Need
Management & Administration	\$1,647,420
Collection	\$7,552,668
Automated Refuse	\$2,410,827
Automated Recycling	\$1,614,133
Automated Yard Waste	\$307,417
Bulky Waste	\$201,551
Commercial Container Refuse	\$1,378,839
Commercial Container OCC	\$387,462
Commercial Container Mixed Recycling	\$374,250
Roll-Off Collection	\$878,190
Facilities	\$5,825,798
Logan Landfill	\$1,679,827
Compost Facility	\$396,223
HHW Facility	\$352,375
New Transfer Station	\$632,725
Transfer Haul	\$845,399
North Valley Landfill	\$1,919,249
Greenwaste/Forestry	\$811,801
Total	\$15,837,687
Out of System	\$1,087,479
Total	\$16,925,166



System Revenue Sufficiency		
Item	Dollars	Percent
Current Revenues	\$14,335,114	90.5%
Full Cost	\$15,837,687	100.0%
Surplus (Deficit)	(\$1,502,573)	-9.5%



Takeaways

- Overall system revenue need increases by ~10%
\$14.3 to \$15.8 million
- Disposal cost (tip fees) escalates significantly with parallel disposal facilities plus a new transfer station
NVL usage constraints
- Commercial container refuse collection subsidizes commercial recycling
- Green waste composting incurs meaningful cost, but not currently charging a processing fee

Rate Recommendation

Rate Recommendation Process

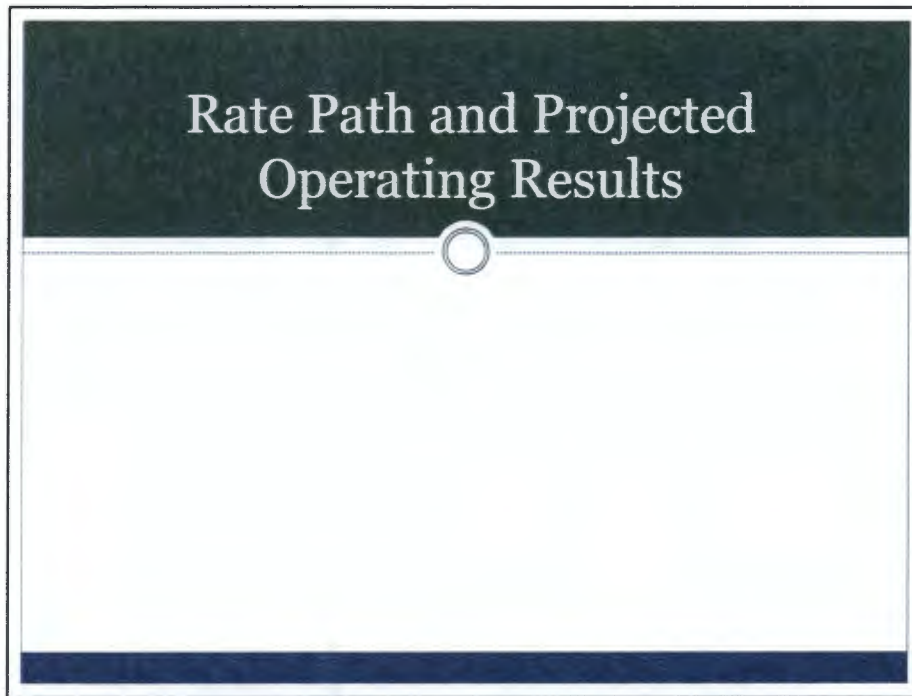
- Consultant and Staff prepared 3 options
- March 27 Presentation to SWAB
- Accepted SWAB recommendation

Recommended Rates

Service			Current Rate	Proposed Rate	Percent Change
Residential Collection	City	Refuse 90-Gallon and Recycling 90-Gallon	\$15.65	\$17.15	10%
		Refuse 60-Gallon and Recycling 90-Gallon	\$13.50	\$14.90	10%
		Voluntary Curbside Green Waste	\$4.00	\$5.00	25%
	County	Refuse 90-Gallon and Recycling 90-Gallon	\$16.25	\$18.15	12%
		Refuse 60-Gallon and Recycling 90-Gallon	\$14.00	\$15.90	14%
		Voluntary Curbside Green Waste	\$4.00	\$6.00	50%
Commercial Collection		Container matrix: See next slide			
		Mixed Recycling - 4 CY	\$48.00	\$52.80	10%
		Mixed Recycling - 6 CY	\$72.00	\$79.20	10%
Roll-off Collection		Cost per Pull	\$123.75	\$126.00	2%
Facility Tip Fees	MSW	Transfer Station and NVL	\$29.00	\$34.50	19%
	C&D	Logan Landfill	\$21.00	\$30.00	43%
	Green Waste	Compost Facility	\$0.00	\$0.00	N/A

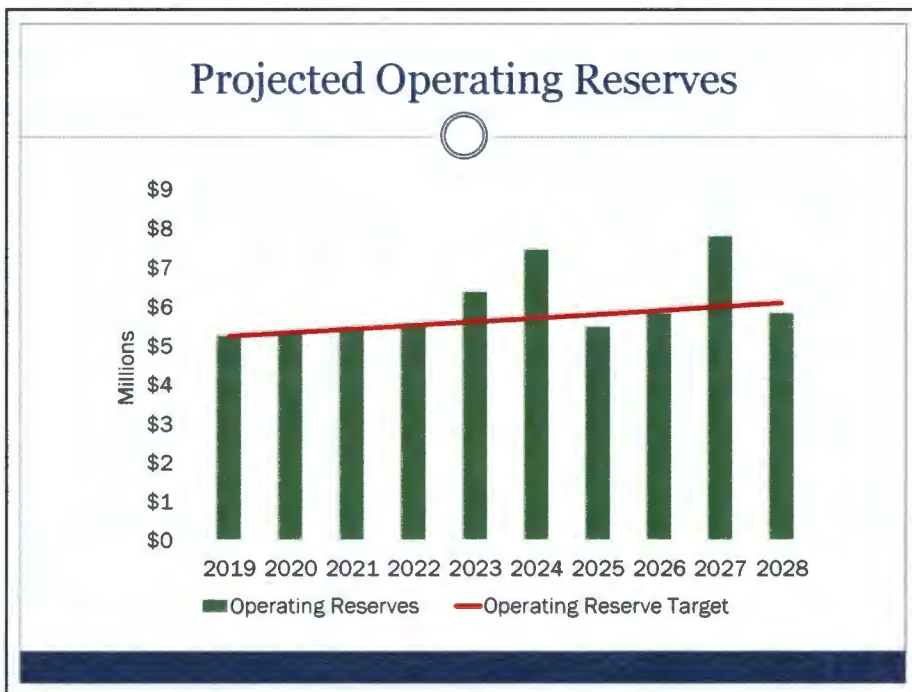
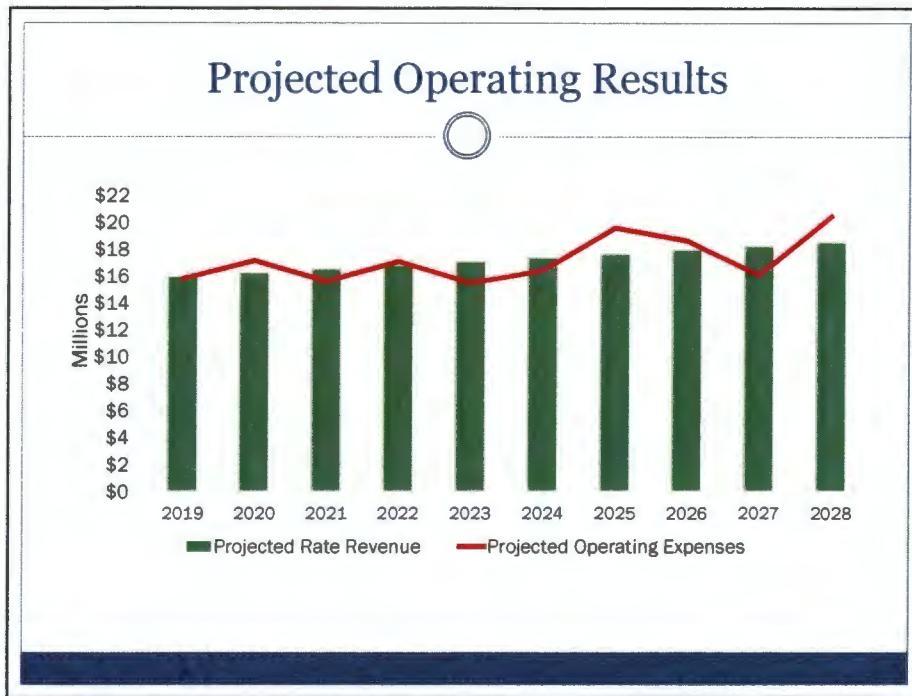
Recommended Rates (cont.)

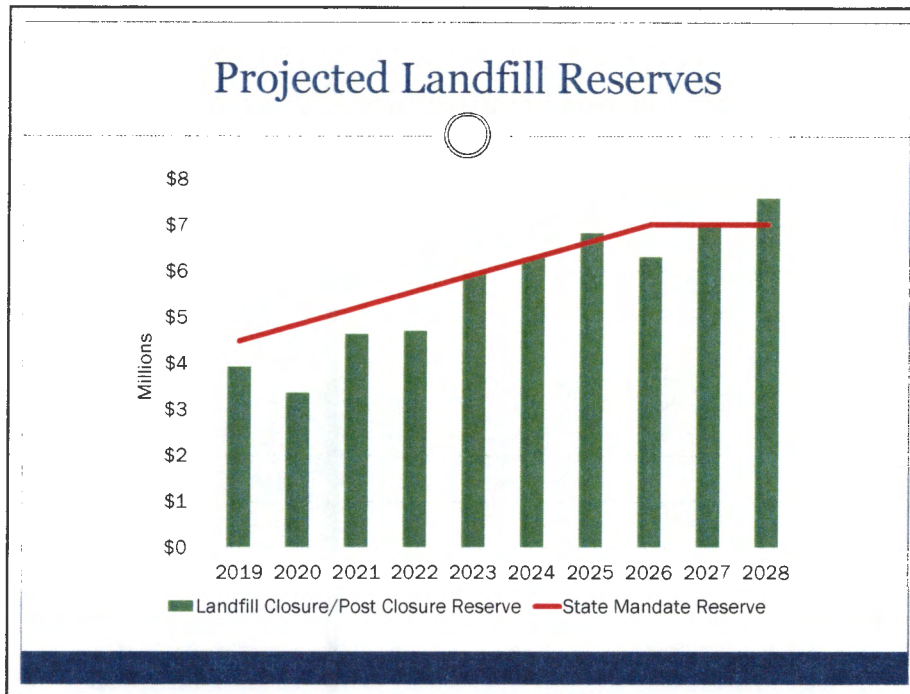
		Frequency Size	1	2	3	4	5	6
Current Rates	2		\$66.80	\$132.60	\$199.40	\$266.20	\$332.00	\$398.80
	3		\$70.20	\$140.40	\$210.60	\$280.80	\$351.00	\$421.20
	4		\$93.60	\$187.20	\$280.80	\$374.40	\$468.00	\$561.60
	6		\$140.40	\$280.80	\$421.20	\$561.60	\$702.00	\$842.40
	8		\$187.20	\$374.40	\$561.60	\$748.80	\$936.00	\$1,123.20
		Frequency Size	1	2	3	4	5	6
Proposed Rates	2		\$67.10	\$134.10	\$201.10	\$268.20	\$335.30	\$402.40
	3		\$73.71	\$147.42	\$221.13	\$294.84	\$368.55	\$442.26
	4		\$98.28	\$196.56	\$294.84	\$393.12	\$491.40	\$589.68
	6		\$144.61	\$289.22	\$433.84	\$578.45	\$723.06	\$867.67
	8		\$192.82	\$385.63	\$578.45	\$771.26	\$964.08	\$1,156.90
		Frequency Size	1	2	3	4	5	6
Change	2		2%	2%	2%	2%	2%	2%
	3		5%	5%	5%	5%	5%	5%
	4		5%	5%	5%	5%	5%	5%
	6		3%	3%	3%	3%	3%	3%
	8		3%	3%	3%	3%	3%	3%



Recommended Rate Path

Rates	2020	2021	2022	2023	2024
Facility Tip Fees	0%	0%	0%	0%	0%
Residential Collection	0%	0%	0%	0%	0%
Commercial Collection	0%	0%	0%	0%	0%
Roll-off Collection	0%	0%	0%	0%	0%





- ### Recommendations
- Implement the recommended 1-time rate increase, effective FY19 (July 2018). If rates are not increased until January 2019 there will be an additional \$500-\$750,000 reserve deficit.
 - Inform incorporated cities and unincorporated areas about rate impacts as soon as possible
 - Update full costs annually and track financial performance
 - Update this study every 3 to 5 years
 - Convert multi-family rates to align with single family rates (\$/unit)

Conclusions

- The City provides a critical, County-wide service through its vertically integrated waste management system
- The one-time rate increases identified in this study provide:
 - Long-term financial stability
 - Continued conservative management of the system
 - Equitable rates for customers that are reasonably aligned with underlying costs

Questions

JOHN CULBERTSON, PRINCIPAL
407-380-8951
JCULBERTSON@MSWCONSULTANTS.COM

RESOLUTION 2018 – 01
CACHE COUNTY SERVICE AREA NO. 1
SOLID WASTE ADVISORY BOARD

A RESOLUTION BY THE CACHE COUNTY SERVICE AREA #1 SOLID WASTE ADVISORY BOARD APPROVING AN ADJUSTMENT OF SOLID WASTE COLLECTION AND DISPOSAL FEES AND MANDATORY CURBSIDE RECYCLING.

WHEREAS, the Solid Waste Advisory Board, was formed to advise the Board of Trustees of Cache County Service Area No. 1 regarding solid waste collection and disposal

WHEREAS, the Board and Cache County Council recognizes the need to adjust the solid waste rates to address the operation of the North Valley Landfill, Transfer Station and Transfer Haul.

BE IT RESOLVED by Cache County Service Area # 1 Solid Waste Advisory Board:

Section 1. Residential Garbage Pickup (includes landfill tipping fees (TF) unless otherwise noted).

Logan City	
90 gallon	\$14.15 per month
Extra pick up	\$3.87 ea container
60 gallon (minimum fee)	\$11.90 per month

The minimum fee for multi-family dwelling units serviced by commercial bins shall be the 60 gallon rate plus recycling, multiplied by the number of dwelling units.

Special Pickup/Bulky Waste Charge	\$20.00 plus TF (except green waste)
-----------------------------------	--------------------------------------

Cache County	
90 gallon	\$15.15 per month
Extra pick up	\$4.19 ea. container
60 gallon	\$12.90 per month

The minimum fee for multi-family dwelling units serviced by commercial bins shall be the 60 gallon rate plus recycling, multiplied by the number of dwelling units.

Special Pickup/Bulky Waste Charge	\$26.00 plus TF (except green waste)
-----------------------------------	--------------------------------------

Section 2. Commercial Garbage Pickup

a. Front Load Refuse hauled by Service Area	
2 yard bins	\$6.59 cu yd per pickup
3 and 4 yard bins	\$5.67 cu yd per pickup
6 and 8 yard bins	\$5.57 cu yd per pickup

Bin Size (yards)	Frequency (Empties/Week)					
	1	2	3	4	5	6
2	\$ 57.11	\$ 114.23	\$ 171.34	\$ 228.45	\$ 285.57	\$ 342.68
3	\$ 73.71	\$ 147.42	\$ 221.13	\$ 294.84	\$ 368.55	\$ 442.26
4	\$ 98.28	\$ 196.56	\$ 294.84	\$ 393.12	\$ 491.40	\$ 589.68
6	\$ 144.82	\$ 289.64	\$ 434.46	\$ 579.28	\$ 724.10	\$ 868.92
8	\$ 193.09	\$ 386.19	\$ 579.28	\$ 772.37	\$ 965.47	\$ 1,158.56

- b. Temporary Dumpster Rental
- | | |
|--|--------------------------------|
| Front Load Rental Fee | \$10.00 weekly or \$1.43 daily |
| Collection/Disposal Fee | Same as Section 2(a) |
| Roll-off Rental Fee (beginning day 15 of rental) | \$40.00 weekly or \$5.71 daily |
| Collection/Disposal Fee | Same as Section 2(c) |
- c. Roll-off Refuse
- | | |
|-------------|---------------------|
| Each Pickup | \$126.00 each |
| | Plus, Applicable TF |
- d. Minimum Commercial Fee
- | | |
|--------------|--------------------|
| Logan City | \$ 14.15 per month |
| Cache County | \$ 15.15 per month |

* ED: Environmental Department

Section 3. New Home Automated Container (A.C.) Service Fee.

Delivery of A.C. in Logan City – for any number of containers	\$20.00
Delivery of A.C. in Cache County – for any number of containers	\$26.00
Delivery of A.C. by customer	\$5.00

Section 4. Landfill Tipping Fees (TF).

Car or truck up to ¾ ton	\$10.00	No Change
Small single axle trailer	\$10.00	No Change
Dual axle trailer and trucks larger than ¾ ton		Applicable TF
General refuse	\$34.50/ton	
Construction debris & tree stumps	\$30.00/ton	
Uncovered or otherwise unsecured loads	Additional fee	\$10.00

Section 5. Recyclable Item Fees.

a. Tire (size measured by inside diameter)	
15 inches or less	\$2.00 ea.
Larger than 15 but less than 20 inches	\$5.00 ea.
20 to 25 inches	\$10.00 ea.
Over 25 inches	\$100.00 ea.
Tires with rim, additional	\$5.00 ea.

Note: There is no charge for separated, recyclable items such as newspaper, ferrous metals, aluminum, carpet pad, used oil, and compostable waste trimmings.

Section 6. Special Handling Fees (SHF).

a. Medical and Infectious Waste	
Minimum Fee:	\$17.00
Loads greater than 1 cubic yards	\$17.00/cu. yd.
b. Hydrocarbon contaminated soil fees	
(1000 ppm in accordance with landfill	Applicable TF plus
Hazardous waste disposal procedures)	\$17.50/ton
c. Household refrigerators, freezers, air conditioners	\$30.00 SHF ea unit
or other appliances originally having contained refrigerant	
which are not certified and marked as having been legally evacuated.	
d. Sludge	Applicable TF Plus
	\$17.50 ton/SHF
e. Any other items requiring special handling	Applicable TF Plus
	\$17.50ton/SHF
f. Metal bottles or other containers which are or have been	\$10.00 SHF ea. Unit
pressurized, including but not limited to propane bottles	
and fire extinguishers.	
g. Asbestos & asbestos contaminated materials	\$500.00/ton

Section 7. Dead Animal Fees

Animal disposal for farmers is free

Section 8. Residential Curbside Green Waste Collection (April – November)

Logan, Smithfield, North Logan, Providence, Hyde Park, River Heights, Millville,	
Nibley, Hyrum.....	
90 Gallon	\$5.00 per month
	(12-month billing period)

Section 9. Green Waste Facility Product Pricing (includes sales tax)

Finished Compost	\$20.00/cu. yd.
Coarse Wood Chips	\$8.00/cu. yd.
Medium Wood Chips	\$12.00/cu. yd.
Pallet Wood Chips	\$10.00/cu. yd.
Premium Wood Chips	\$15.00/cu. yd.
Christmas Tree Wood Chips	\$10.00/cu.yd.
Firewood	\$10.00 per cord
Colored Chips	\$30.00/cu.yd.
Bagged Compost	\$1.50/1 cu.ft.

Section 10. Commercial/Curbside Recycling Collection

Countywide Mandatory	\$3.00 per resident per month, once
Curbside Recycling	every other week pick up
a. Roll-off Recyclables	

- Each Pick up (Green Waste, Other Recyclables) \$45.00 each
If, ED* receives recycling revenue
- Each Pick up (cardboard) \$ 0.00 each
If, ED* receives recycling revenue
- b. Roll-off Cardboard and other recyclables \$126.00/per pick-up
no rebate to ED
- c. Front Load Cardboard \$0.00 each
If, ED* receives recycling revenue
- d. Front Load Mixed recycling and other recyclables \$6.60/yard - Every Other Week Pick-Up
(\$13.20/yard Weekly)

Bin Size (yards)	Frequency (Empties/Week)	
	bi-weekly	Weekly
4	\$ 26.40	\$ 52.80
6	\$ 39.60	\$ 79.20

Section 11. Spring Cleanup/Green Waste Drop Site

Provide one time spring clean up for every community, or keep the green waste drop site/s at a location identified and monitored by the local community, or credit \$2.15 per residential customer per year to the local community for green waste management

Section 12. Hardship Allowance

Cache County Residential customers may apply for reduced recycling rate annually on the basis of hardship through the Solid Waste Advisory Board.

Section 13. Special Event Rates (SER), also see attached letter

Residential Containers

Logan \$3.15 per empty
All Other Areas outside of Logan \$3.30 per empty
For all services provide two times the requested numbers of containers or charge ½ of the amount of containers.

Commercial Containers

For all SER commercial services the rate is the same as shown in section 4 except no rental fee and the size of the container will be double the size of the requested container or the charge will be ½ of the service fee.

Section 14. Solid Waste Collection and Disposal Fee Review

The Solid Waste Advisory Board recommends that the Logan City Environmental Department shall provide a cost of service update at least once every three years to avoid large rate increases.

The effective date of this resolution shall be July 1, 2018.

THIS RESOLUTION duly adopted upon this 16TH day of APRIL, 2018 by the following vote:

Yeas: Hamud, Daines, Buttars, Young, Berentzen, Adams, (Field), (Dupont)

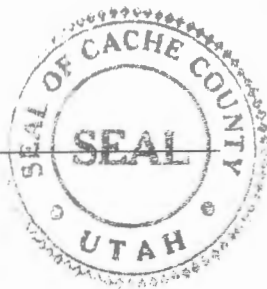
Nays:

Absent: Miller, Bailey, Hair, White, Payne
Field, Dupont

By: Craig W. Buttars
Craig W. Buttars, Chair

Attest:

By: Janeen Allen
Janeen Allen, Secretary



SWAB

3/29/18

Name	Org.	Phone
Issa Hamud	city of Logan	435-786-9752
Tyler Richard	City of Logan	716-9756
Holly Daines	"	" 757-2630
Chris W Butlers	Cache County	755 1850
Sean Dhan	Heald School	202-329-9117
Jeff Young	Richmond City	435-232-8056
Dave Ericson	Cache County Board	435-770-0283
Jeff Spatig	City of Logan	435-716-9794
Alex BEARNSON	Revue	435-757-6403
CARL Fransen	City of Logan	754-9740
Lloyd Berentzen	Bear River Hlth.	792-6483
Steve Larsen	Logan City	716-9760
DEAN ADAMS	CITIZEN LOGAN CITY	752-5156

KELLY FIELD

RYAN DUPONT

LEWISTON CITY

APPROVED BY TEXT

CITIZEN REPRESENTATIVE

APPROVED BY EMAIL



+1 (435) 770-4267



Kelly Field

today.

Thu, Mar 29, 10:40 AM

I can support the
proposed rate in-
crease or a less-
er amount.

Tue, Apr 3, 7:51 PM

What happened

at the solid



Janeen Allen - Re: Solid Waste Advisory Board Meeting Agenda, Minutes and Resolution

From: Ryan Dupont <ryan.dupont@usu.edu>
To: Janeen Allen <Janeen.Allen@cachecounty.org>
Date: 3/29/2018 1:12 PM
Subject: Re: Solid Waste Advisory Board Meeting Agenda, Minutes and Resolution
Cc: A00582158-issa_hamud-usu <issa.hamud@loganutah.org>

Janeen;

I will not be able to attend the meeting tomorrow as I have on campus class and meeting obligations that I can't get out of. I do want to go on record as supporting the fee increases as necessary for the proper funding of solid waste management in the Valley. Please convey this to the rest of the Advisory Board. Thank you and sorry I can't make the meeting. Regards. RRDupont

Dr. R. R. Dupont

Professor of Civil and Environmental Engineering

Utah Water Research Laboratory

Utah State University

8200 Old Main Hill

Logan, UT 84322-8200

On Mar 28, 2018, at 9:29 PM, Janeen Allen <Janeen.Allen@cachecounty.org> wrote:

<RESOLUTION 2018-01 - Approving and Adjustment of Solid Waste Collection and Disposal Fees and Mandatory Curbside Recycling.pdf>

Waste Water Treatment



- **No significant change on WWT budget**
- **We anticipate budget adjustment for the new treatment plant after we receive Guaranteed Maximum Price for MWH**
- **Final Design documents have been submitted to the DWQ and we expect they will take about 2 months to review them. We expect Construction Permit before August 2018**
- **MWH Constructors is preparing subcontract packages for 37 different subcontracts. MWH has scheduled the first subcontract bid packages to be submitted in early July.**
- **It is anticipated that we will be starting construction in August 2018 assuming a satisfactory Guaranteed Maximum Price negotiation with MWH Constructors.**
- **You will see activity in the month of May on site as we perform a groundwater pumping test and a preload area to verify projected settlements due to onsite fill. This work is part of the preconstruction phase of the project.**

CRAIG W BUTTARS
COUNTY EXECUTIVE / SURVEYOR

199 NORTH MAIN
LOGAN, UTAH 84321
TEL: 435-755-1850
FAX: 435-755-1981



COUNTY COUNCIL
DAVID L. ERICKSON, *CHAIR*
KARL B. WARD *VICE CHAIR*
GREGORY MERRILL,
BARBARA Y. TIDWELL
JON WHITE
GINA H. WORTHEN
GORDON A. ZILLES

May 29, 2018

Mayor Holly H. Daines
290 North 100 West
Logan, UT 84321

Re: NOTICE OF SOLID WASTE SERVICE RATE CHANGES

Dear Mayor Daines,

After careful consideration and review of the data presented by an independent consultant, the recommendation of the Solid Waste Advisory Board, and public comments received at the open public hearing, the Board of Trustees (Cache County Council) of the Cache County Service Area #1 approved new solid waste service rates that will go into effect July 1, 2018.

The rate increase will help fund increased operational costs due to the new landfill (North Valley landfill), the new transfer station, and the waste transfer service from the transfer station to the new landfill. These new facilities are essential to our solid waste services area and they provide a long-term cost savings to residents.

Attached is a copy of the new rate schedule approved by the Board of Trustees, and if you have questions about the rate changes, please contact Issa Hamud, Logan City Environmental Director at 435-716-9752.

Thank you,

Craig W Buttars
Cache County Executive

RESOLUTION 2018 - 01
CACHE COUNTY SERVICE AREA NO. 1
BOARD OF TRUSTEES

**A RESOLUTION BY THE CACHE COUNTY SERVICE AREA #1 BOARD OF TRUSTEES
APPROVING AN ADJUSTMENT OF SOLID WASTE COLLECTION AND DISPOSAL
FEES AND MANDATORY CURBSIDE RECYCLING.**

WHEREAS, the Solid Waste Advisory Board, was formed to advise the Board of Trustees of Cache County Service Area No. 1 regarding solid waste collection and disposal

WHEREAS, the Board and Cache County Council recognizes the need to adjust the solid waste rates to address the operation of the North Valley Landfill, Transfer Station and Transfer Haul.

BE IT RESOLVED by Cache County Service Area # 1 Board of Trustees:

Section 1. Residential Garbage Pickup (includes landfill tipping fees (TF) unless otherwise noted).

Logan City	
90 gallon	\$14.15 per month
Extra pick up	\$3.87 ea container
60 gallon (minimum fee)	\$11.90 per month

The minimum fee for multi-family dwelling units serviced by commercial bins shall be the 60 gallon rate plus recycling, multiplied by the number of dwelling units.

Special Pickup/Bulky Waste Charge	\$20.00 plus TF (except green waste)
-----------------------------------	--------------------------------------

Cache County	
90 gallon	\$15.15 per month
Extra pick up	\$4.19 ea. container
60 gallon	\$12.90 per month

The minimum fee for multi-family dwelling units serviced by commercial bins shall be the 60 gallon rate plus recycling, multiplied by the number of dwelling units.

Special Pickup/Bulky Waste Charge	\$26.00 plus TF (except green waste)
-----------------------------------	--------------------------------------

Section 2. Commercial Garbage Pickup

a. Front Load Refuse hauled by Service Area	
2 yard bins	\$6.59 cu yd per pickup
3 and 4 yard bins	\$5.67 cu yd per pickup
6 and 8 yard bins	\$5.57 cu yd per pickup

Bin Size (yards)	Frequency (Empties/Week)					
	1	2	3	4	5	6
2	\$ 57.11	\$ 114.23	\$ 171.34	\$ 228.45	\$ 285.57	\$ 342.68
3	\$ 73.71	\$ 147.42	\$ 221.13	\$ 294.84	\$ 368.55	\$ 442.26
4	\$ 98.28	\$ 196.56	\$ 294.84	\$ 393.12	\$ 491.40	\$ 589.68
6	\$ 144.82	\$ 289.64	\$ 434.46	\$ 579.28	\$ 724.10	\$ 868.92
8	\$ 193.09	\$ 386.19	\$ 579.28	\$ 772.37	\$ 965.47	\$ 1,158.56

b. Temporary Dumpster Rental

Front Load Rental Fee \$10.00 weekly or \$1.43 daily
Collection/Disposal Fee Same as Section 2(a)

Roll-off Rental Fee (beginning day 15 of rental) \$40.00 weekly or \$5.71 daily
Collection/Disposal Fee Same as Section 2(c)

c. Roll-off Refuse

Each Pickup \$126.00 each
Plus, Applicable TF

d. Minimum Commercial Fee

Logan City \$ 14.15 per month
Cache County \$ 15.15 per month

* ED: Environmental Department

Section 3. New Home Automated Container (A.C.) Service Fee.

Delivery of A.C. in Logan City – for any number of containers \$20.00
Delivery of A.C. in Cache County – for any number of containers \$26.00
Delivery of A.C. by customer \$5.00

Section 4. Landfill Tipping Fees (TF).

Car or truck up to ¾ ton	\$10.00	No Change
Small single axle trailer	\$10.00	No Change
Dual axle trailer and trucks larger than ¾ ton		Applicable TF
General refuse	\$34.50/ton	
Construction debris & tree stumps	\$30.00/ton	
Uncovered or otherwise unsecured loads	Additional fee	\$10.00

Section 5. Recyclable Item Fees.

a. Tire (size measured by inside diameter)

15 inches or less	\$2.00 ea.
Larger than 15 but less than 20 inches	\$5.00 ea.
20 to 25 inches	\$10.00 ea.
Over 25 inches	\$100.00 ea.
Tires with rim, additional	\$5.00 ea

Note: There is no charge for separated, recyclable items such as newspaper, ferrous metals, aluminum, carpet pad, used oil, and compostable waste trimmings.

Section 6. Special Handling Fees (SHF).

a. Medical and Infectious Waste	
Minimum Fee:	\$17.00
Loads greater than 1 cubic yards	\$17.00/cu. yd.
b. Hydrocarbon contaminated soil fees	
(1000 ppm in accordance with landfill	Applicable TF plus
Hazardous waste disposal procedures)	\$17.50/ton
c. Household refrigerators, freezers, air conditioners	\$30.00 SHF ea unit
or other appliances originally having contained refrigerant	
which are not certified and marked as having been legally evacuated.	
d. Sludge	Applicable TF Plus
	\$17.50 ton/SHF
e. Any other items requiring special handling	Applicable TF Plus
	\$17.50ton/SHF
f. Metal bottles or other containers which are or have been	\$10.00 SHF ea. Unit
pressurized, including but not limited to propane bottles	
and fire extinguishers.	
g. Asbestos & asbestos contaminated materials	\$500.00/ton

Section 7. Dead Animal Fees

Animal disposal for farmers is free

Section 8. Residential Curbside Green Waste Collection (April – November)

Logan, Smithfield, North Logan, Providence, Hyde Park, River Heights, Millville,	
Nibley, Hyrum.....	
90 Gallon	\$5.00 per month
	(12-month billing period)

Section 9. Green Waste Facility Product Pricing (includes sales tax)

Finished Compost	\$20.00/cu. yd.
Coarse Wood Chips	\$8.00/cu. yd.
Medium Wood Chips	\$12.00/cu. yd.
Pallet Wood Chips	\$10.00/cu. yd.
Premium Wood Chips	\$15.00/cu. yd.
Christmas Tree Wood Chips	\$10.00/cu.yd.
Firewood	\$10.00 per cord
Colored Chips	\$30.00/cu.yd.
Bagged Compost	\$1.50/1 cu.ft.

Section 10. Commercial/Curbside Recycling Collection

Countywide Mandatory	\$3.00 per resident per month, once
Curbside Recycling	every other week pick up
a. Roll-off Recyclables	

- Each Pick up (Green Waste, Other Recyclables) \$45.00 each
If, ED* receives recycling revenue
- Each Pick up (cardboard) \$ 0.00 each
If, ED* receives recycling revenue
- b. Roll-off Cardboard and other recyclables \$126.00/per pick-up
no rebate to ED
- c. Front Load Cardboard \$0.00 each
If, ED* receives recycling revenue
- d. Front Load Mixed recycling and other recyclables \$6.60/yard - Every Other Week Pick-Up
(\$13.20/yard Weekly)

Bin Size (yards)	Frequency (Empties/Week)	
	bi-weekly	Weekly
4	\$ 26.40	\$ 52.80
6	\$ 39.60	\$ 79.20

Section 11. Spring Cleanup/Green Waste Drop Site

Provide one time spring clean up for every community, or keep the green waste drop site/s at a location identified and monitored by the local community, or credit \$2.15 per residential customer per year to the local community for green waste management

Section 12. Hardship Allowance

Cache County Residential customers may apply for reduced recycling rate annually on the basis of hardship through the Solid Waste Advisory Board.

Section 13. Special Event Rates (SER), also see attached letter

Residential Containers

Logan \$3.15 per empty

All Other Areas outside of Logan \$3.30 per empty

For all services provide two times the requested numbers of containers or charge ½ of the amount of containers.

Commercial Containers

For all SER commercial services the rate is the same as shown in section 4 except no rental fee and the size of the container will be double the size of the requested container or the charge will be ½ of the service fee.

Section 14. Solid Waste Collection and Disposal Fee Review

The Solid Waste Advisory Board recommends that the Logan City Environmental Department shall provide a cost of service update at least once every three years to avoid large rate increases.

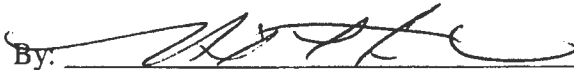
The effective date of this resolution shall be July 1, 2018

THIS RESOLUTION duly adopted upon this 22 day of May, 2018 by the following vote:

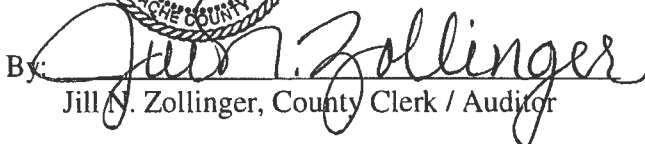
Yeas: Worthen, Zilles, Ward, Merrill, White, Tidwell.

Nays: Erickson

Absent:

By: 
David L. Erickson, Chair

Attest:

By: 
Jill N. Zollinger, County Clerk / Auditor

