

# Managing Pocket Gophers

Fact Sheet No. 6.515

Natural Resources Series | Wildlife

by W.F. Andelt and R.M. Case\*

Four species of pocket gophers are found in Colorado and distributed almost entirely in different areas (Figure 1), possibly because of different ecological requirements or competition. Plains pocket gophers (*Geomys bursarius*) are abundant in sandy and silty soils of the plains but are not abundant in compacted soils. The northern pocket gopher (*Thomomys talpoides*) occurs in deep, sandy soils of the plains to shallow gravel in mountainous areas. It is the most common species in mountain rangelands and forests. The Botta's (formerly called valley) pocket gopher (*Thomomys bottae*) is found primarily in well-developed soils of warm valleys in southern Colorado. The yellow-faced pocket gopher (*Pappogeomys castanops*) inhabits a portion of southeastern Colorado where the plains pocket gopher is found. However, the yellow-faced pocket gopher is confined to drier sites. Pocket gophers attain the highest densities on light-textured soils with good herbage production. Shallow soils limit pocket gophers due to tunnel cave-ins and poor insulation from warm summer and cold winter temperatures.

Distinguishing among the four species of pocket gophers in Colorado is moderately easy. The northern and Botta's pocket gophers have smooth upper incisors with a single indistinct groove near the inner border and have smaller bodies and proportionately smaller front feet than the plains and yellow-faced pocket gophers. The northern pocket gopher usually is dark-colored with a whitish chin and belly whereas the Botta's pocket gopher is often reddish-brown with a blackish chin and reddish belly. These two species are often difficult to tell apart. The plains pocket gopher has two distinct grooves on the front surface of each upper incisor whereas the yellow-faced pocket gopher has one distinct groove.

## Biology, Reproduction and Behavior

Pocket gophers feed on roots they encounter from digging, from vegetation they pull into the tunnel from below, and vegetation above ground near the tunnel. They like above-ground vegetation when it is green and succulent. Pocket gophers prefer alfalfa. Many trees and shrubs are clipped just above ground, especially under snow cover.

Pocket gophers construct burrow systems by loosening the soil with their claws and incisors, then use their forefeet and chest to push the soil out of the burrow. The soil is deposited in fan-shaped mounds 12 to 18 inches wide and 4 to 6 inches high.

Burrow systems consist of a main tunnel, generally 4 to 18 inches below the soil surface, and a variable number of lateral burrows extending from the main. Lateral burrows end with a soil mound or only a soil plug at the surface. Burrows are about 2 to 3 1/2 inches in diameter, depending on the size of the gopher. A burrow system may be linear to highly branched, may contain up to 200 yards of tunnels, and may have a hundred or more mounds.

Pocket gophers usually construct one to three mounds per day although the rate varies. One gopher brings about 2 1/4 tons

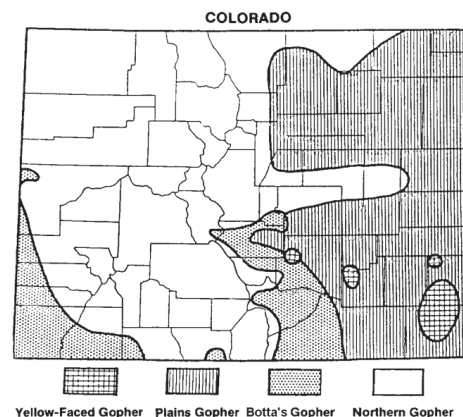
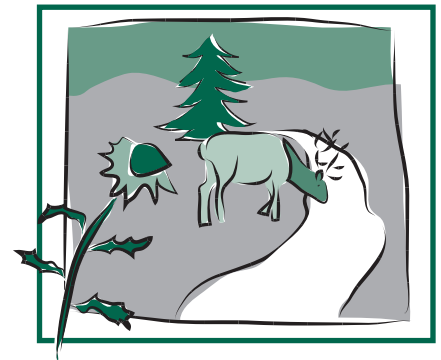


Figure 1: Pocket gopher distribution.



## Quick Facts

- Four species of pocket gophers are found in Colorado.
- Pocket gophers reduce productivity of portions of alfalfa fields and native grasslands by 20 to 50 percent.
- Damage by pocket gophers can be reduced by exclusion, cultural methods and habitat modification, trapping, and toxicants applied by hand or with a burrow builder.

\*W.F. Andelt, Colorado State University Cooperative Extension wildlife specialist and associate professor, fishery and wildlife biology; and R.M. Case, forestry, fisheries and wildlife, University of Nebraska. 5/2006



of soil to the surface each year. Mound-building activity usually is greatest in spring and fall.

Pocket gophers usually breed in the spring and produce one litter of one to 10 young (typically three to four) after a gestation period of about 20 days. Usually, only one adult is found in each burrow system except during breeding and while raising young. Six to eight plains pocket gophers per acre are considered high densities whereas northern pocket gophers occasionally reach densities of 20 per acre. Young pocket gophers usually begin dispersing from the natal burrow in June when about one-third grown.

Pocket gophers are consumed by owls, hawks, badgers, coyotes, foxes, bobcats, skunks, weasels, bullsnakes and rattlesnakes.

## Damage and Control

Pocket gophers reduce the productivity of alfalfa fields and native grasslands on which they are found by 20 to 50 percent. If gophers are present on 10 percent of a field, they may reduce overall forage productivity of the field by 2 to 5 percent. Gopher mounds dull and plug sickle bars when harvesting hay or alfalfa. Gophers sometimes damage trees by girdling or clipping stems and by pruning roots. Gophers may, at times, destroy underground utility cables and irrigation pipes.

In retrospect, gophers are beneficial in several ways. Their burrowing activities increase soil fertility by adding organic matter in the form of plant materials and feces. Their burrowing increases soil aeration, increases water infiltration, reduces compaction, and increases the rate of soil formation by bringing up subsoil subjecting it to weatherization.

Gophers are not protected by state or federal laws. When selecting a damage-control program, consider nonlethal measures such as habitat modification or appropriate alfalfa varieties, which may be as cost effective as lethal measures and should minimize adverse environmental impacts. It is important to maintain biodiversity, or to retain the existing plants and animals that may later benefit humans and assist in maintaining ecosystem function.

## Exclusion

Pocket gophers can be excluded from valuable plots of ornamental trees and shrubs with a 1/4 to 1/2-inch mesh hardware cloth fence buried at least 18 inches. The bottom of the fence should be bent at a 90-degree angle so that a 6-inch apron of wire projects horizontally toward the gopher. Place the fence in shallow soil at least 2 feet from the nearest plants to avoid root injury. This method is of limited practicality because of expense and labor. Cylindrical plastic Vexar mesh tubes placed over the entire seedling, including bare root, can reduce damage to newly planted seedlings.

## Crop Management

Alfalfa varieties with several large roots rather than a single tap root suffer less when pocket gophers feed on them and are more resistant to grazing by grasshoppers. Each cut section of roots from a multi-rooted variety will send up a new shoot that may compensate for losses due to gophers.

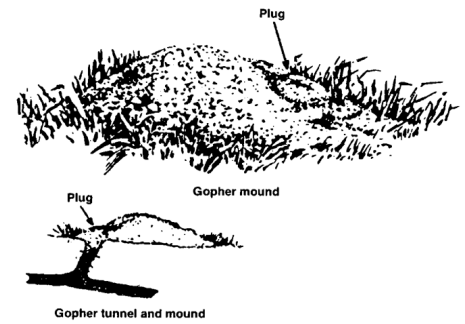
Rotating alfalfa with grain crops effectively controls pocket gophers because annual grains do not produce large enough roots to support gophers year round. Planting 50-foot wide **buffer strips of grain** around a hay field can provide unsuitable habitat and minimize immigration of pocket gophers.

Controlling broad-leaf forbs with 2, 4-D herbicide treatments can effectively control northern and Botta's pocket gophers because they prefer the underground storage structures of the forbs. This method is less effective for plains pocket gophers because they easily survive on grasses. In orchards and shelterbelts, forb control will likely limit gopher damage.

Flood irrigation can effectively control gophers, especially in fields that are leveled to remove high spots that might serve as refuges. The wet-flooded soil generally prevents diffusion of gasses in and out of the burrow and sticks to the pocket gopher's fur and claws creating an inhospitable environment.

## Trapping

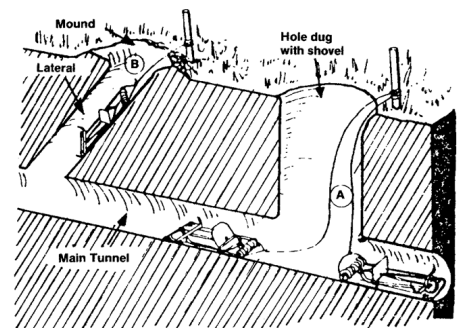
Trapping is one of the best methods to reduce pocket gopher numbers on small to moderate-sized fields (less than 50 acres) and to remove remaining animals after a



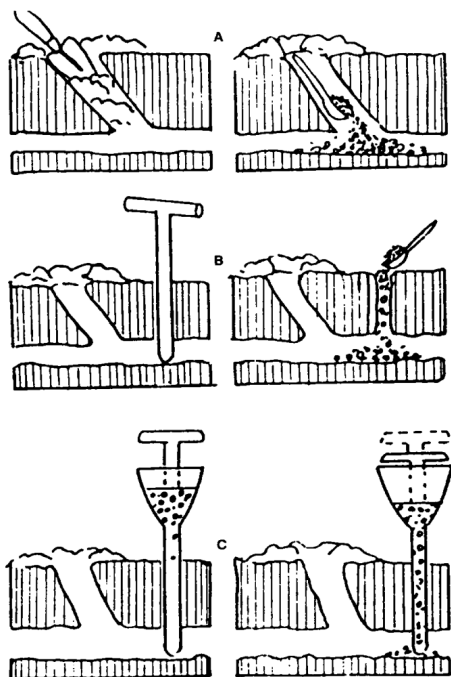
**Figure 2:** Pocket gopher mound and its relation to the tunnel system.

poison control program. Body-gripping traps (Death Clutch 1, Macabee, Victor, Guardian Gopher Trap), available from hardware and trapping supply stores, work exceptionally well for capturing gophers. Traps can be set in the main tunnel or in a lateral, preferably near the freshest mounds. The lateral tunnel usually can be located by a circular plug (sometimes a depression) in the fan-shaped mound (Figure 2). Probe into the depression, usually in the direction away from the mound, until the direction of the tunnel is determined. Remove the several-inch plug of soil with a garden trowel or a spade. Insert a trap, secured to a wire and marker stake, with the body gripping jaws about 6 to 8 inches into the tunnel (Figure 3).

Traps also can be set in the main tunnel located about 12 to 18 inches from the mound. After uncovering the main tunnel with a shovel, set two traps as shown in Figure 3. The tunnels either can be left open or covered after setting traps. Check traps twice daily since gophers often visit the traps within a few hours. If a trap is not visited within 48 hours, move it to a



**Figure 3:** Trap placement in burrow systems: (A) Place two traps set in opposite directions in main tunnel; (B) set single trap in lateral tunnel from which soil plug has been removed. Wire each trap to a stake.



**Figure 4:** Gopher bait application. (A) Hand application: remove plug in tunnel, starting from gopher mound. Place quantity of bait into main tunnel with a long-handled spoon. Seal tunnel with sod, do not cover bait with soil. (B) Probe application: Locate main tunnel with probe as described in text. With spoon, drop bait into tunnel through hole made by probe. Cover probe hole with sod. Bait-dispensing probe: Locate main tunnel with probe, push lever or plunger to dispense bait into tunnel, cover probe hole with sod.

new location. Trapping usually is most successful in the spring and fall when gophers are actively building mounds.

## Toxicants

Four rodenticides are registered for pocket gopher control in Colorado: strychnine (0.25 to 0.5 percent active ingredient), zinc phosphide (2 percent active ingredient), chlorophacinone (Rozol) (0.005 percent active ingredient), and diphacinone (Eaton's Answer) (0.005 percent active ingredient).

Strychnine, formulated on milo, barley or wheat, is a widely used toxicant but is highly toxic and potentially hazardous to all wildlife. It usually is labeled as a Restricted-Use Pesticide. Underground baiting with strychnine presents minimal hazards to non-target wildlife but any grain spilled on the surface may be hazardous to ground-feeding birds.

In some studies, zinc phosphide has been less effective than strychnine. Diphacinone (Eaton's Answer) is blended with a water resistant material and is formulated in bait blocks. The blocks

provide long-term control because the bait remains effective after killing resident gophers so that invading gophers also are eliminated. Since chlorophacinone (Rozol) is a multiple dose anticoagulant, more bait is required to achieve adequate control.

To poison pocket gophers, place the bait in their tunnel systems by hand or with a burrow builder machine.

Place bait into a burrow system by hand after opening the main tunnel or with a hand probe. Treat two or three of the freshest mounds within each burrow system (a circle with about a 100-foot diameter). To place bait in the burrow system by hand, locate the main tunnel by digging with a shovel 12 to 18 inches from the plug side of the mound. Place the recommended amount of bait, following label directions, in each direction of the opened main tunnel and well into the system. Close off each tunnel with sod clumps and soil so gophers do not attempt to close the system and cover the bait with soil.

A less time-consuming baiting method involves using a pointed-rod hand probe. Locate the main tunnel 12 to 18 inches from the plug side of the mound by pressing the probe into the ground (Figure 4). Determine the location of the tunnel by the decreased friction on the probe. Place bait through the probe hole into the tunnel. A reservoir-type bait probe dispenser also is available for poisoning gophers (Figure 4). A button is pushed on the bait probe when it is pushed in the burrow and a metered dose of bait drops into the burrow. Place the recommended amount of bait down each of two or three probe openings and then cover the probe holes with sod.

The burrow builder mechanically delivers bait underground so large acreages can be economically treated for pocket gopher control. Burrow builders are available in a standard hydraulically operated unit or a three-point hitch model. The device consists of a knife and torpedo assembly that makes an artificial burrow at desired soil depths, a coulter blade that cuts roots of plants ahead of the knife, a seeder assembly for bait dispensing, and packer wheel assembly to close the furrow behind the knife. The seeder box has a metering device for dispensing various poison baits at desired rates. Burrow builders can be used successfully in agricultural mountainous areas if the soil is not extremely rocky. However,

## Other

Shooting pocket gophers is impractical because they seldom wander above ground.

Protect buried utility cables and irrigation lines by enclosing with lead, PVC, or other conduit materials exceeding 2.9 inches in diameter. Pocket gophers can damage cables armored with soft metals (lead, aluminum) if the diameters are less than 2.9 inches. Crushed rock or gravel greater than 1 inch in diameter placed around cables may protect them.

operations on steep slopes can result in poorly constructed tunnels or damage to the torpedo.

To achieve good results with a burrow builder:

1. Adjust the burrow builder to construct tunnels at the same depth as those constructed by gophers in your area so gophers intercept the tunnels.
2. Use the machine only when the soil moisture is adequate because if the soil is too dry the burrow may collapse and if the soil is too wet the slot over the tunnel may not close (generally, the soil moisture is adequate if a compressed handful holds its shape).
3. Space the burrows at 20- to 30-foot intervals in areas of infestation (burrow spacing is dependent on gopher densities and species involved; usual spacing for the northern and Botta's pocket gophers is 20 to 25 feet and 25 to 30 feet for the plains and yellow-faced pocket gophers).
4. Periodically check to assure formation of a good burrow and check if bait is dispensing down the tube.
5. Enclose the perimeter of the field with artificial burrows to prevent reinvasion.
6. Follow directions provided with the burrow builder machine.

Recommended application rates of 1 to 2 pounds per acre of 0.35 to 0.5 percent strychnine provide 85 to 95 percent control. Clean up any spilled bait and properly dispose. Bury any dead gophers found above ground to reduce hazards to predators and scavengers. Harrowing the field about one week after treatment to level

mounds and then retreating by hand or trapping at new mounds should result in more complete control.

Fumigants, such as aluminum phosphide and gas cartridges, are not very successful for controlling pocket gophers because gophers either sense the poisonous gas and plug the tunnel or the fumigants diffuse into the soil, particularly when it is dry. Pocket gophers reportedly can be controlled by injecting exhaust from an old vehicle without antipollution devices into the burrow for about 3 minutes.