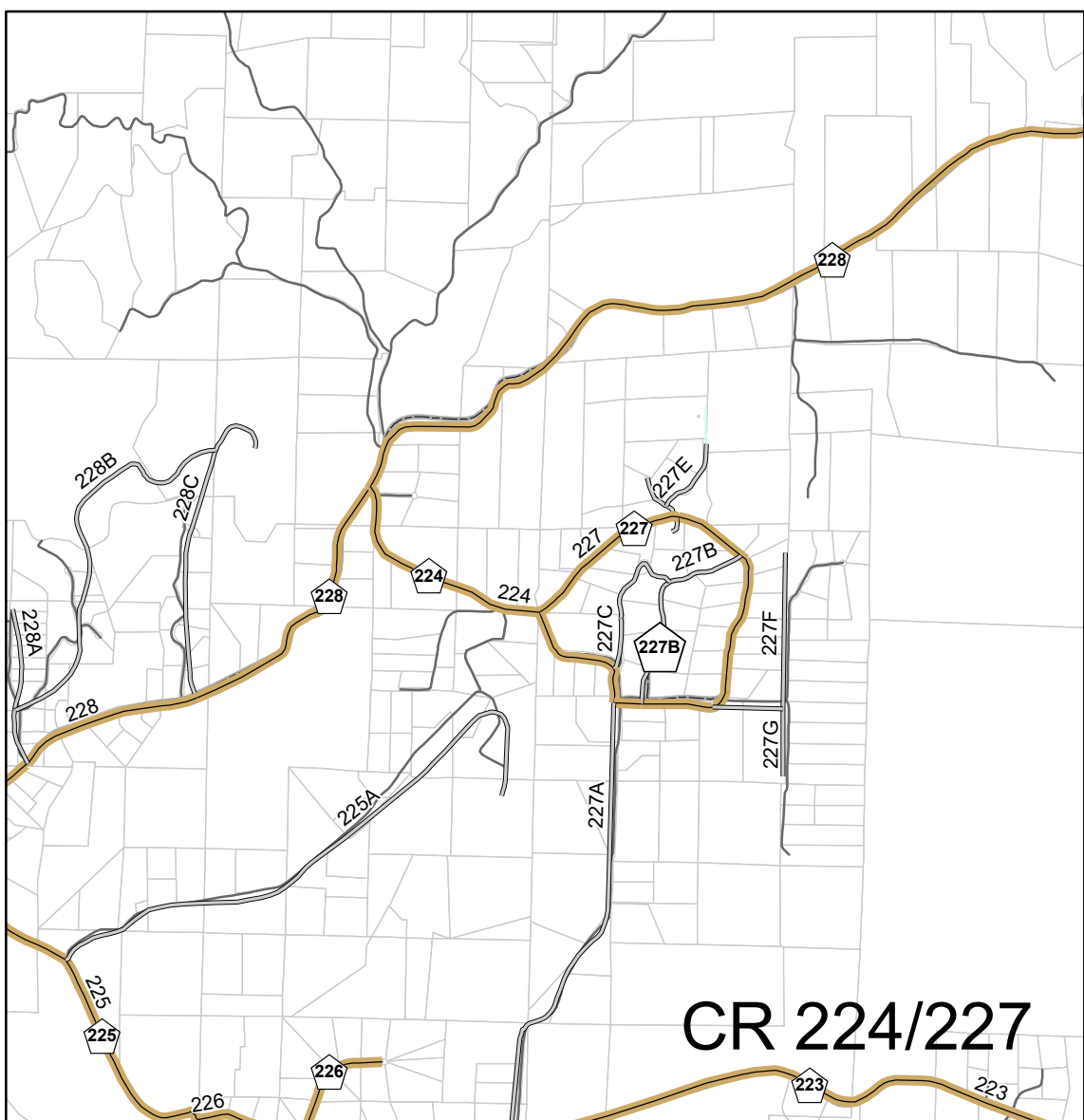
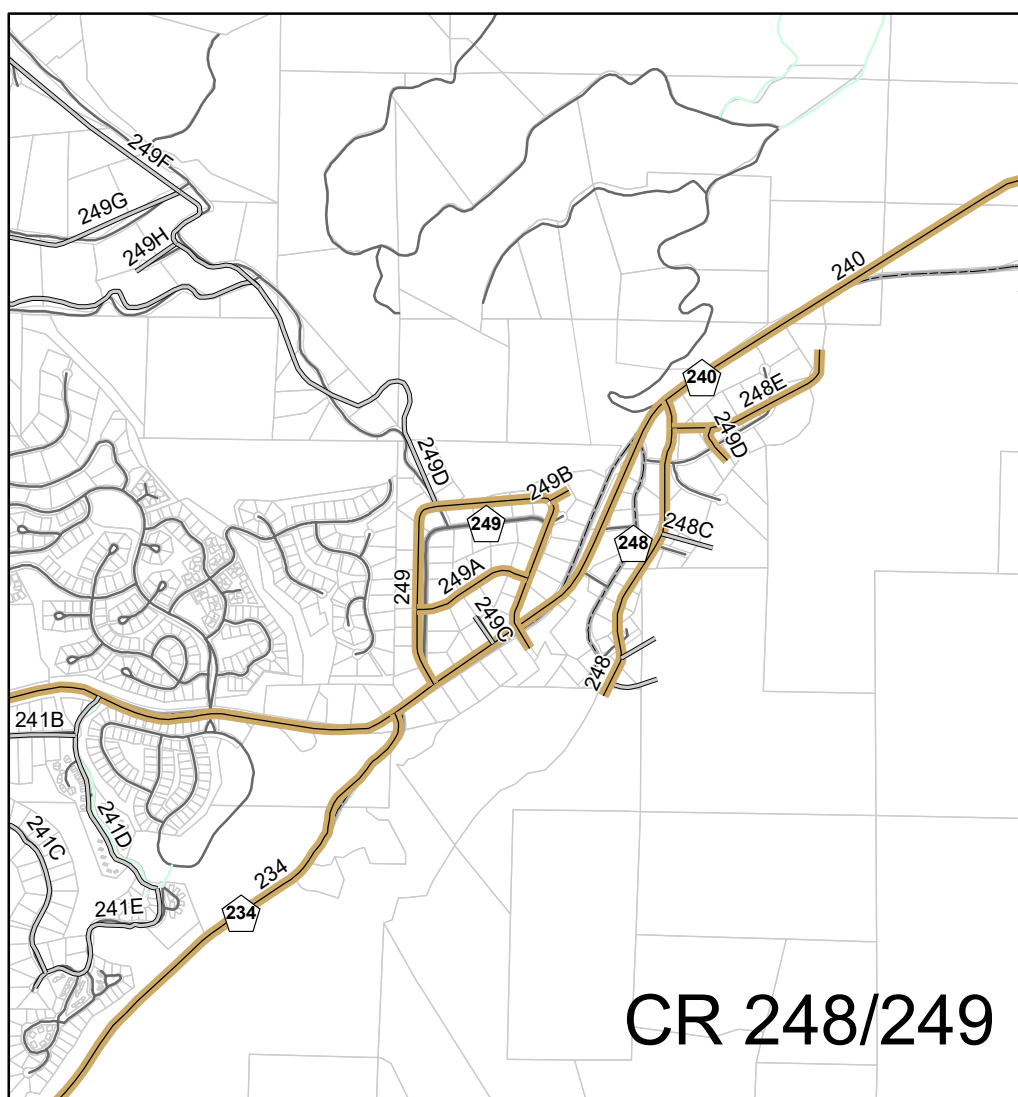
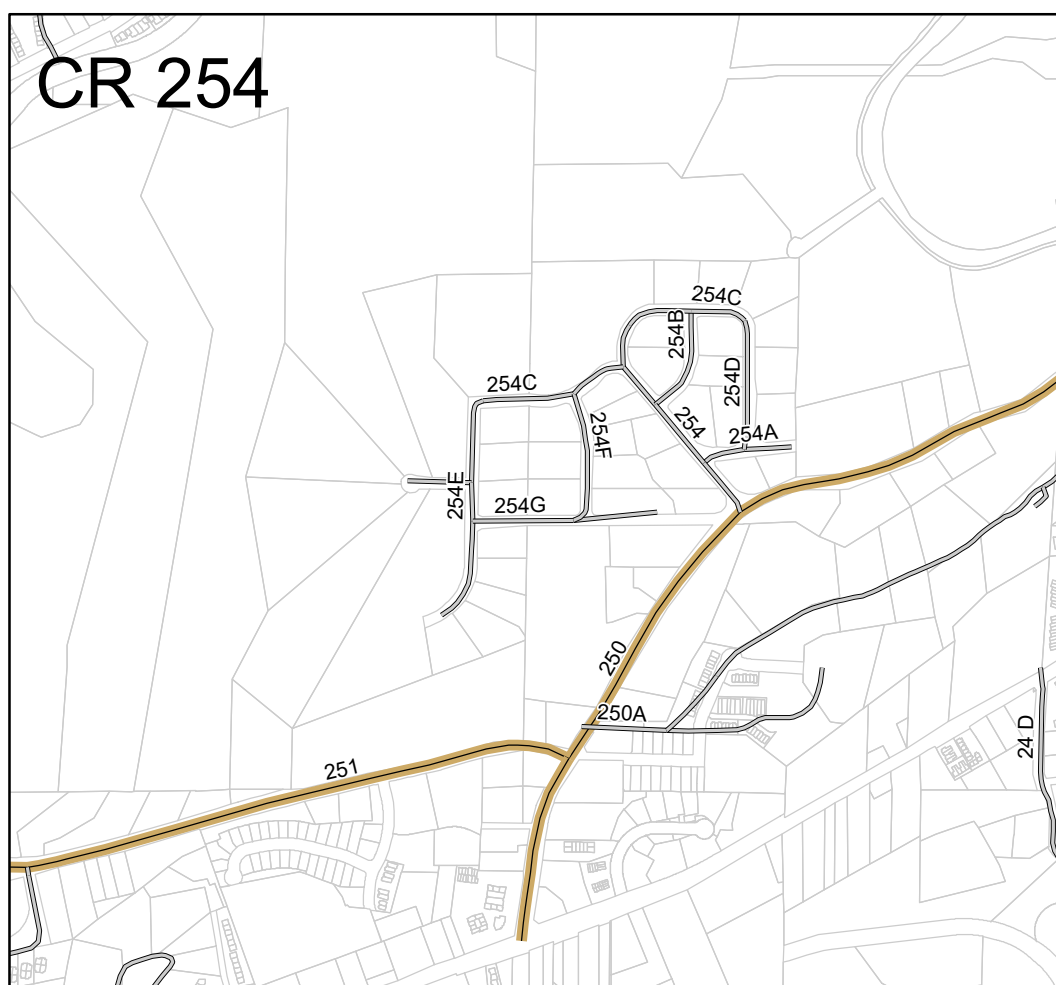
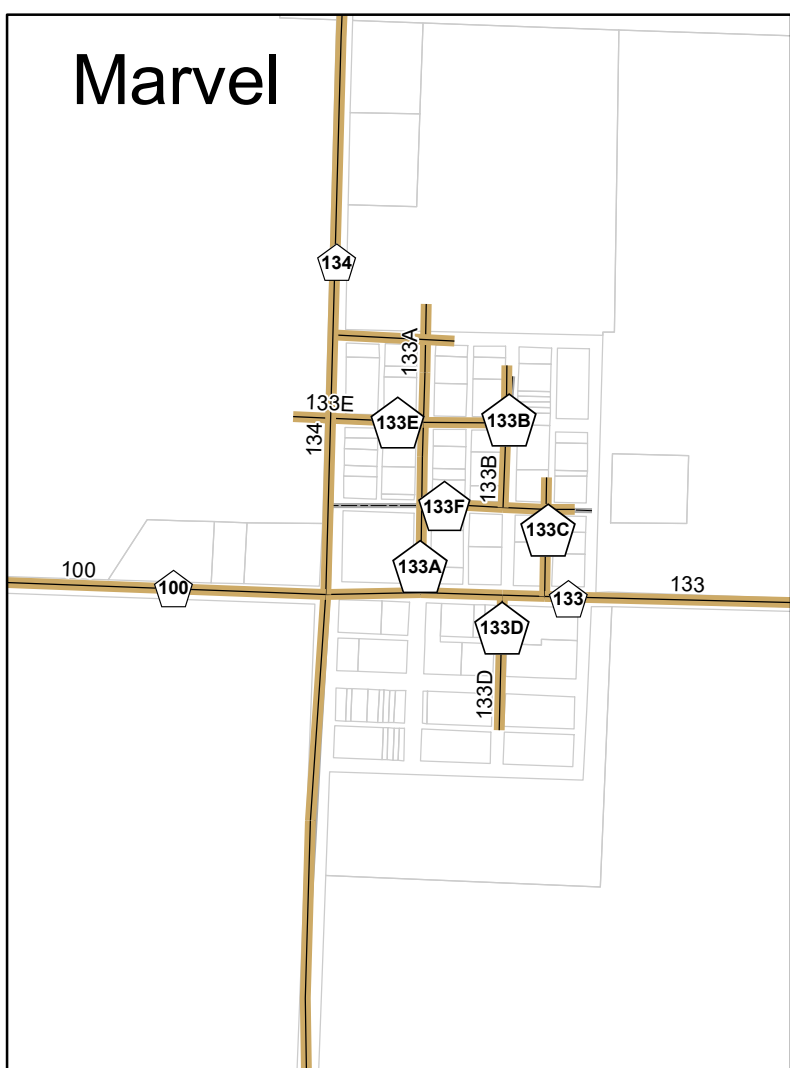
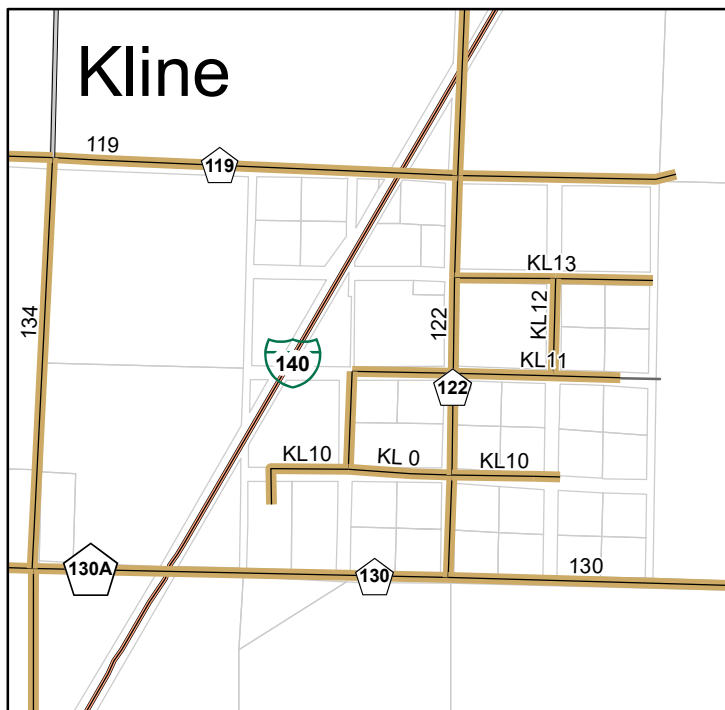
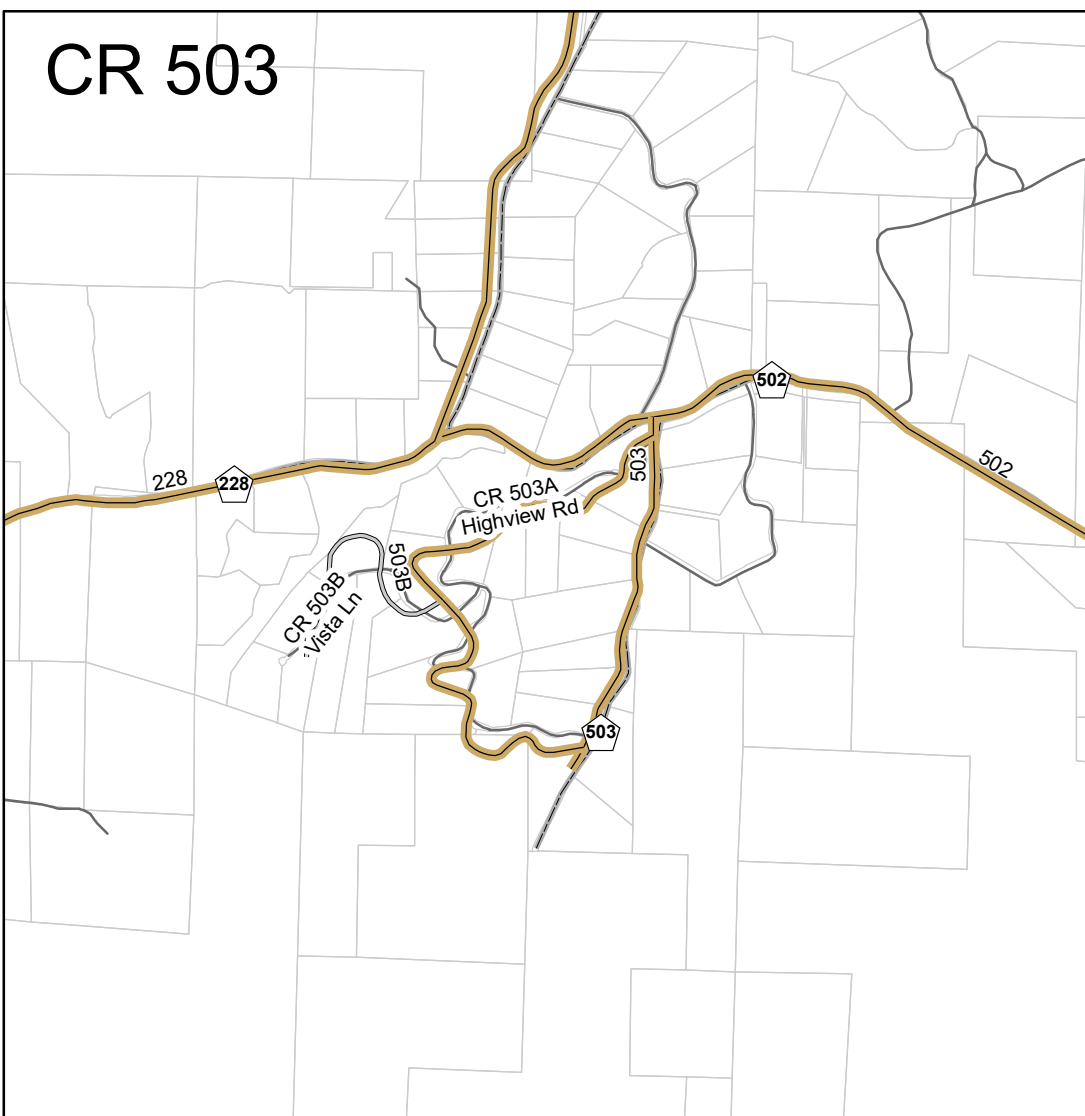
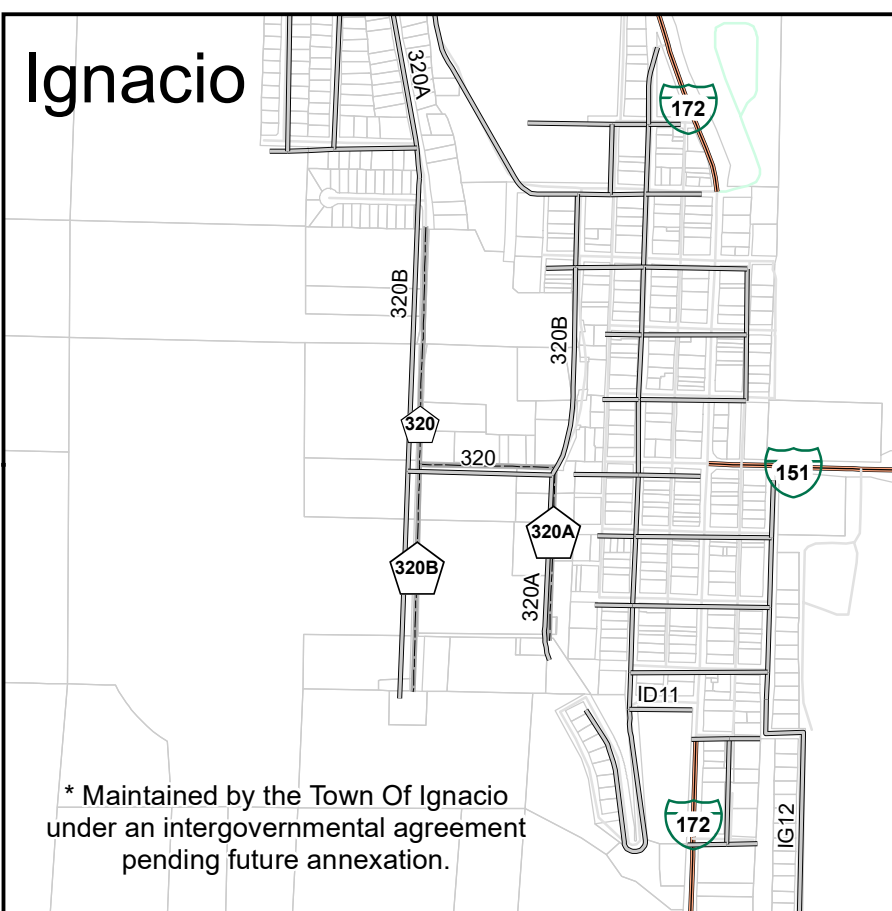
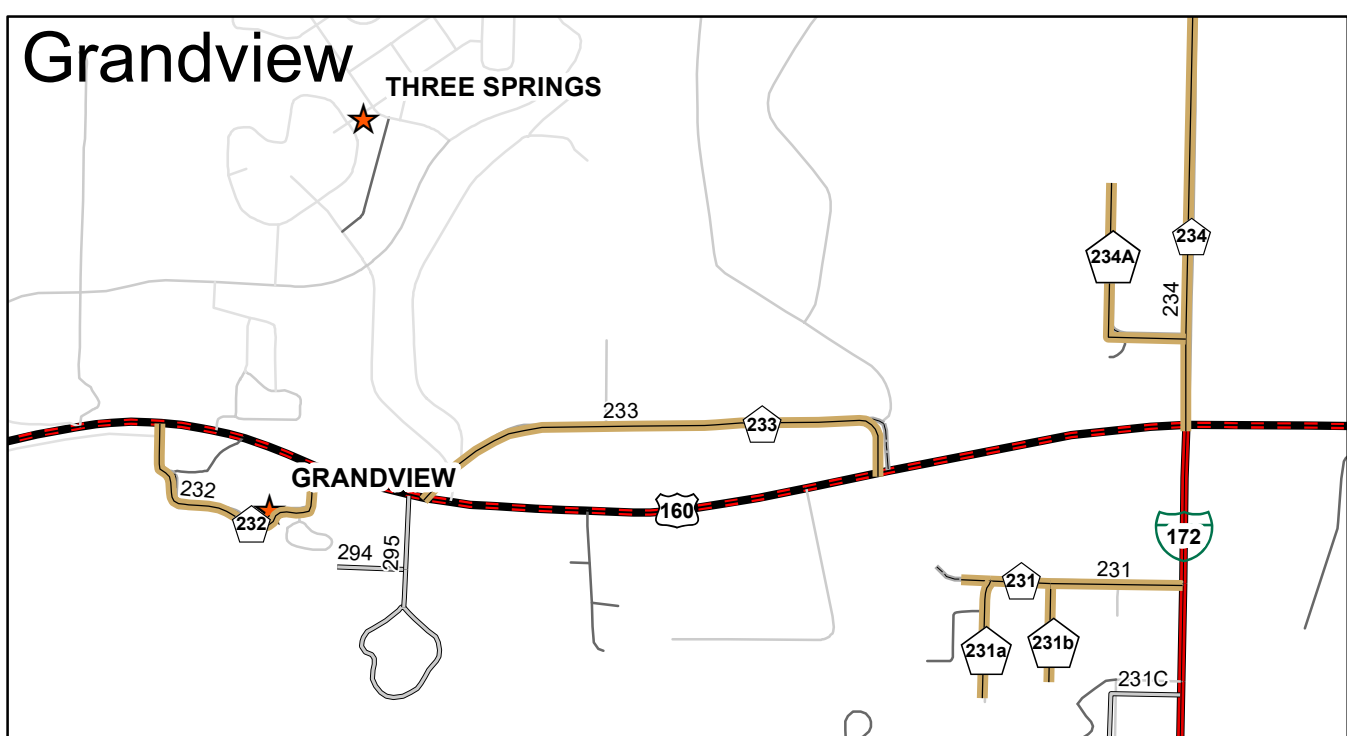
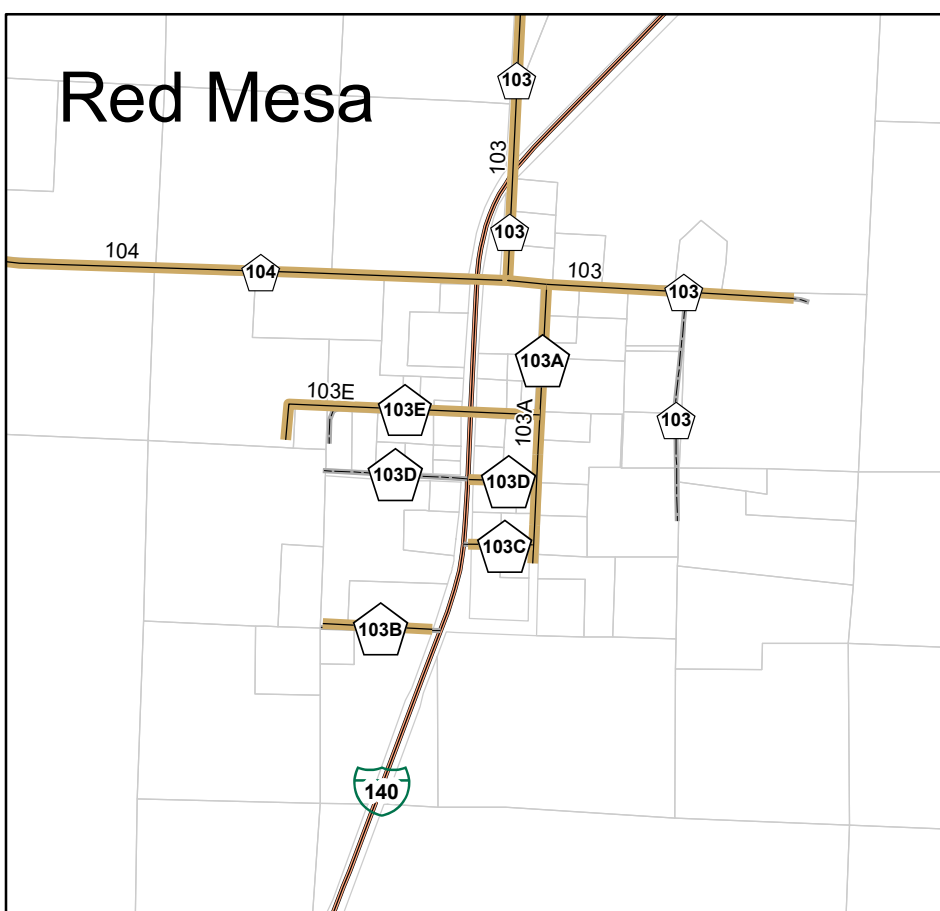
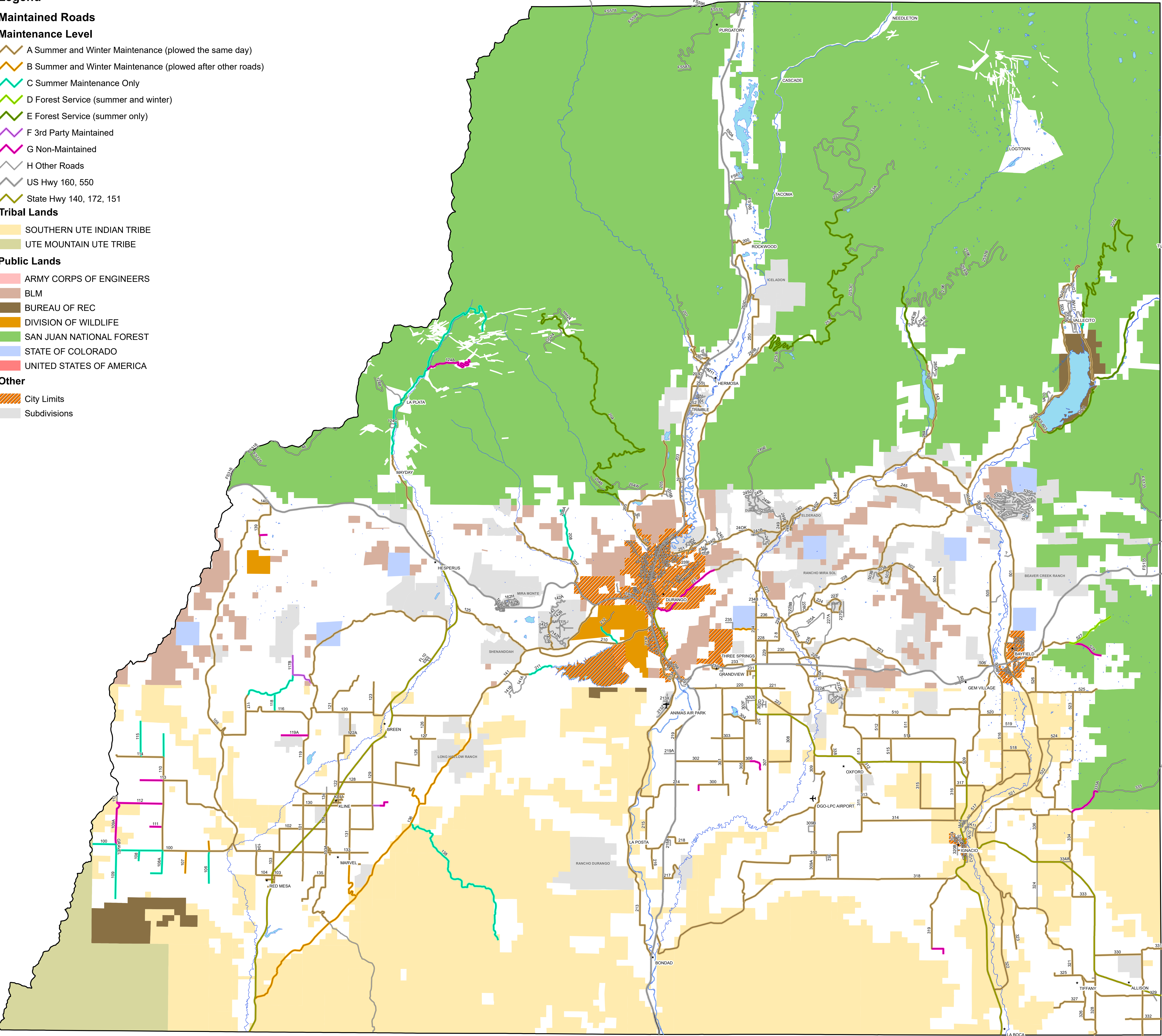


# 2024 La Plata County Road Maintenance Map



- Legend**
- Maintained Roads**
- Maintenance Level**
- A Summer and Winter Maintenance (plowed the same day)
  - B Summer and Winter Maintenance (plowed after other roads)
  - C Summer Maintenance Only
  - D Forest Service (summer and winter)
  - E Forest Service (summer only)
  - F 3rd Party Maintained
  - G Non-Maintained
  - H Other Roads
  - US Hwy 160, 550
  - State Hwy 140, 172, 151
- Tribal Lands**
- SOUTHERN UTE INDIAN TRIBE
  - UTE MOUNTAIN UTE TRIBE
- Public Lands**
- ARMY CORPS OF ENGINEERS
  - BLM
  - BUREAU OF REC
  - DIVISION OF WILDLIFE
  - SAN JUAN NATIONAL FOREST
  - STATE OF COLORADO
  - UNITED STATES OF AMERICA
- Other**
- City Limits
  - Subdivisions



"Resolution 2024-10 adopted the 2024 County Road Maintenance Map as required by La Plata County Code Section 42-94; in order to continue protecting the health, safety, and welfare of the residents of La Plata County, reaffirm the necessity of the long-term restrictions on access previously approved by the Board pertaining to the following sections of county roads: County Road 237 (Horse Gulch) (Resolution No. 2002-18); and County Road 212 (Smelter Mountain) (Resolution No. 2020-34); and County Road 211 (Resolution 2011-18) County Road 108A (Resolution No. 2019-10); and County Road 124 (La Plata Canyon) (Resolution 2020-37)."

**DISCLAIMER:**  
This information is provided as is without warranty of any kind, either expressed or implied, including but not limited to the implied warranties of merchantability and fitness for a particular purpose. In no event shall La Plata County be liable for any damages whatsoever including direct, indirect, incidental, consequential, loss of business profits, or special damages. It should only be used for general planning purposes.

\*Service maintenance map only. This map does not represent ownership of roads or right-of-way.  
County road designation is not determinative of county road ownership. County road sign posting may be for mail delivery, school bus, or emergency services purposes.

