

# JOSEPHINE COUNTY VOTERS' PAMPHLET

OFFICIAL GENERAL ELECTION  
NOVEMBER 8, 2016



## **ATTENTION**

This is the beginning of the Josephine County voters' pamphlet. The county portion of this joint voters' pamphlet is inserted in the center of the state's portion. Each page of the county voters' pamphlet is clearly marked with a gray color bar on the outside edge. All information contained in the county portion of this pamphlet has been assembled and printed by County Clerk Trisha Myers.



Greetings,

The county voter's pamphlet for the **November 8, 2016 General Election** has been inserted within the state pamphlet in a cost-savings cooperative effort between Josephine County and the Secretary of State. Each page of your county voters' pamphlet is clearly marked with a gray color bar on the outside edge. Please read through your pamphlet as it will provide you with information regarding the candidate races and ballot measures at hand.

### **Are you registered to vote?**

Voters' Pamphlets are mailed to each household rather than each registered voter. Therefore, the receipt of this voters' pamphlet does not guarantee you are a registered voter. You may check your registration status at [www.oregonvotes.gov](http://www.oregonvotes.gov) or by contacting your local elections office at (541) 474-5243. The deadline to register to vote in the November 8, 2016 General Election is **October 18, 2016**. Additional voter registration information is available in the state portion of your voters' pamphlet.

### **Ballots!**

Ballots are scheduled to be mailed to each registered voter on October 20<sup>th</sup>. If you are a registered voter and have not received your ballot in the mail by Thursday, October 27<sup>th</sup>, please call your County Clerk's office at (541) 474-5243.

### **What's on the Ballot?**

Your ballot will only contain the races and measures in which you are eligible for. You are only eligible to vote on the issues pertaining to the districts in which you reside. Therefore, it is important to remember that not all of the races and measures contained within this pamphlet will appear on your ballot.

### **Postmarks do not count!**

Your ballot must be received by your County Clerk's office or deposited in an Official Ballot Drop Site no later than 8:00 p.m. on Election Day, November 8<sup>th</sup>. If you have not mailed your ballot by November 1<sup>st</sup>, you should consider depositing it in an Official Ballot Drop Site to ensure that it is received before the deadline.

### **It's your choice and it's your voice!**

I encourage you to exercise your right to vote. Casting your ballot is an easy and effective way to make your voice heard throughout your community, your state, and your nation.

TRISHA MYERS

Josephine County Clerk & Recorder

**Notice:** The County Voters' pamphlet contains measure arguments and candidate statements submitted by those who have chosen to pay the required fee. The candidate statements and measure arguments contained in this pamphlet are printed as submitted and have not been verified for accuracy by the county.

# Index to Voters' Pamphlet

---

All candidates were invited to participate in this pamphlet. The following candidates submitted information.

<b>Measures</b>		Page
17-73 .....		17-5
17-74 .....		17-7
17-75 .....		17-15
17-76 .....		17-19
<b>Candidates</b>		Page
Arce, Eva L.I. ....		17-23
Burrow, Chris .....		17-24
Dalegowski, Daniel .....		17-26
DeYoung, Dan .....		17-20
Dillinger, Mark .....		17-27
Eames, Barry .....		17-26
Flaming, Tyler P. ....		17-24
Gardiner, John L. ....		17-28
Hartline, Don .....		17-25
Heck, Keith .....		17-20
Hunker, Bill .....		17-21
Lovelace, Valerie .....		17-25
Moore, Donald G. ....		17-27
Morgan, Lily .....		17-21
Myers, Trisha .....		17-22
Rafferty, James .....		17-22
Wertz, Mary Theresa .....		17-23
<b>Voting Information</b> .....		17-4
<b>Drop Site Locations</b> .....		17-32

# Voting Instructions

USE A PEN (BLUE OR BLACK INK)

At the November 8, 2016 General Election, the voters of Josephine County should cast their votes as illustrated below.

## TO VOTE FOR A CANDIDATE

FILL IN THE OVAL  TO THE LEFT OF YOUR RESPONSE.

## TO WRITE IN A NAME

FILL IN THE OVAL  TO THE LEFT OF THE LINE AND WRITE THE NAME ON THE LINE.

## TO VOTE ON A MEASURE

FILL IN THE OVAL  TO THE LEFT OF THE YES OR NO.

### EXAMPLES

<u>CANDIDATE</u>	<u>WRITE-IN</u>	<u>MEASURE</u>
<b>President</b> Vote for One	<b>President</b> Vote for One	<b>Measure 17.20</b>
<b>Question:</b> Shall the City Charter be amended to change the specific city council appointment time lines?		
<input type="radio"/> JOHN ALLEN	<input type="radio"/> JOHN ALLEN	<input checked="" type="radio"/> Yes
<input checked="" type="radio"/> THOMAS JEFFERSON	<input type="radio"/> THOMAS JEFFERSON	<input type="radio"/> No
<input type="radio"/> J. Q. PUBLIC	<input type="radio"/> J. Q. PUBLIC	
<input type="radio"/> Write-In _____	<input checked="" type="radio"/> <b>Billy Kidd</b> Write-In _____	

### OVERVOTE

IF YOU VOTE FOR MORE CANDIDATES THAN ALLOWED, OR IF YOU VOTE BOTH YES AND NO ON A MEASURE, IT IS CALLED AN OVERVOTE. YOUR VOTE **WILL NOT COUNT** FOR THAT CANDIDATE OR MEASURE.

### UNDERVOTE

IF YOU CHOOSE NOT TO VOTE ON A CONTEST, IT IS CALLED AN UNDERVOTE. A VOTE WILL NOT BE COUNTED FOR THAT CONTEST. YOU DO NOT HAVE TO VOTE ON ALL CONTESTS. THOSE YOU DO VOTE ON WILL STILL BE COUNTED.

### EXAMPLES

<b>OVERVOTE</b> <b>Measure 17.20</b> <b>Question:</b> Shall the City Charter be amended to change the specific city council appointment time lines? <input checked="" type="radio"/> Yes <input checked="" type="radio"/> No	<b>UNDERVOTE</b> <b>Measure 17.20</b> <b>Question:</b> Shall the City Charter be amended to change the specific city council appointment time lines? <input type="radio"/> Yes <input type="radio"/> No
--	---

IF YOU CHANGE YOUR CHOICE, SPOIL YOUR BALLOT, OR LOSE IT, CONTACT THE COUNTY CLERK'S OFFICE AT (541) 474-5243.

## **REMEMBER TO VOTE BOTH SIDES OF YOUR BALLOT** **–Returning Your Voted Ballot–**

Vote your ballot.

Fold the ballot and insert it into the secrecy envelope.

Seal the secrecy envelope and insert it into the colored return envelope.

Seal the colored return envelope and sign the statement on the back of the envelope.

Your ballot will not be counted if your envelope is not signed.

Place the appropriate first class postage on the return envelope and mail it so that it is received in the Josephine County Clerk's Office or at an Official Ballot Drop Site location (no postage required) no later than 8:00 p.m. Tuesday, November 8, 2016.

**IMPORTANT: YOUR BALLOT WILL NOT BE COUNTED IF IT IS NOT RECEIVED BY 8:00 P.M. NOVEMBER 8, 2016.**

# Measure 17-73 City of Grants Pass

Referred to the People by the Grants Pass City Council

## 17-73

**Prohibits marijuana registrants and licensees in Grants Pass.**

**QUESTION:** Shall medical marijuana processors, medical marijuana dispensaries, and recreational marijuana producers, processors, wholesalers, and retailers be prohibited in Grants Pass?

**SUMMARY:** State law allows operation of registered medical marijuana processors, medical marijuana dispensaries and licensed recreational marijuana producers, processors, wholesalers, and retailers. State law provides that a city council may adopt an ordinance to be referred to the voters to prohibit the establishment of any of those registered or licensed activities.

Approval of this measure would prohibit the establishment and operation of medical marijuana processors, medical marijuana dispensaries, recreational marijuana producers, processors, wholesalers, and retailers within the City of Grants Pass. If this measure is approved, the City will be ineligible to receive distributions of state marijuana tax revenues and will be unable to impose a local tax or fee on the production, processing or sale of marijuana or any product into which marijuana has been incorporated.

ineligible to receive distributions of state marijuana tax revenues.

Currently, under ORS 475B.345, a City may impose up to a three percent tax on the sale of marijuana items by a marijuana retailer in the City. However, a City that adopts an ordinance prohibiting the establishment of medical marijuana processors, medical marijuana dispensaries, or recreational marijuana producers, processors, wholesalers, or retailers may not impose a local tax or fee on the production, processing or sale of marijuana or any product into which marijuana has been incorporated. Approval of this measure would therefore prevent the City from imposing a local tax on those activities.

*(This information furnished by the Grants Pass City Council.)*

## Explanatory Statement

Approval of this measure would prohibit the establishment and operation of certain marijuana activities within the City.

ORS 475B.400 to 475B.525 provides that the Oregon Health Authority will register medical marijuana processors and medical marijuana dispensaries. Medical marijuana processors compound or convert marijuana into concentrates, extracts, edible products, and other products intended for human consumption and use. Medical marijuana dispensaries facilitate the transfer of marijuana and marijuana products between patients, caregivers, processors, and growers. ORS 475B.005 to 475B.399 provides that the Oregon Liquor Control Commission will license recreational marijuana producers (those who manufacture, plant, cultivate, grow or harvest marijuana), processors, wholesalers, and retailers.

The City Council may adopt an ordinance prohibiting the establishment of any of those entities within the City, but the Council must refer the ordinance to the voters at a statewide general election. The Grants Pass City Council has adopted an ordinance prohibiting the establishment of medical marijuana processors, medical marijuana dispensaries, and recreational marijuana producers, processors, wholesalers, and retailers within the City and, as a result, has referred this measure to the voters.

If approved, this measure would prohibit medical marijuana processors, medical marijuana dispensaries, and recreational marijuana producers, processors, wholesalers, and retailers within the City.

Approval of this measure has revenue impacts. Currently, ten percent of state marijuana tax revenues will be distributed to cities to assist local law enforcement in performing their duties under ORS 475B.760(2). If approved, this measure would make the City

# Measure 17-73 City of Grants Pass

## ORDINANCE NO. 16-5691

### AN ORDINANCE OF THE CITY OF GRANTS PASS DECLARING A BAN ON MEDICAL MARIJUANA PROCESSING SITES, MEDICAL MARIJUANA DISPENSARIES, RECREATIONAL MARIJUANA PRODUCERS, RECREATIONAL MARIJUANA PROCESSORS, RECREATIONAL MARIJUANA WHOLESALERS, AND RECREATIONAL MARIJUANA RETAILERS; REFERRING ORDINANCE; AND DECLARING AN EMERGENCY.

#### WHEREAS:

1. ORS 475B.400 to 475B.525 provides that the Oregon Health Authority will register medical marijuana processing sites and medical marijuana dispensaries; and
2. ORS 475B.005 to 475B.399 directs the Oregon Liquor Control Commission to license the production, processing, wholesale, and retail sale of recreational marijuana; and
3. ORS 475B.800 provides that the City Council may adopt an ordinance to be referred to the electors of the City prohibiting the establishment of certain state-registered and state-licensed marijuana businesses in the area subject to the jurisdiction of the City; and
4. The City Council desires to refer the question of whether to prohibit recreational marijuana producers, processors, wholesalers, and retailers, as well as medical marijuana processors and medical marijuana dispensaries to the voters of Grants Pass.

#### NOW, THEREFORE, THE CITY OF GRANTS PASS HEREBY ORDAINS:

#### DEFINITIONS.

Marijuana means the plant Cannabis family Cannabaceae, any part of the plant Cannabis family Cannabaceae and the seeds of the plant Cannabis family Cannabaceae.

Marijuana processing site means an entity registered with the Oregon Health Authority to process marijuana.

Marijuana processor means an entity licensed by the Oregon Liquor Control Commission to process marijuana.

Marijuana producer means an entity licensed by the Oregon Liquor Control Commission to manufacture, plant, cultivate, grow or harvest marijuana.

Marijuana retailer means an entity licensed by the Oregon Liquor Control Commission to sell marijuana items to a consumer in this state.

Marijuana wholesaler means an entity licensed by the Oregon Liquor Control Commission to purchase items in this state for resale to a person other than a consumer.

Medical marijuana dispensary means an entity registered with the Oregon Health Authority to transfer marijuana.

**BAN DECLARED.** As described in section ORS 475B.800, the City of Grants Pass hereby prohibits the establishment and operation of the following in the City of Grants Pass:

- (a) Marijuana processing sites;
- (b) Medical marijuana dispensaries;
- (c) Marijuana producers;
- (d) Marijuana processors;
- (e) Marijuana wholesalers;
- (f) Marijuana retailers.

**REFERRAL.** This ordinance shall be referred to the electors of the City of Grants Pass at the next statewide general election on November 8, 2016.

**EMERGENCY.** This ordinance being necessary for the immediate preservation of the public peace, health and safety, an emergency is declared to exist, and this ordinance shall be in full force and effect upon its passage.

**ADOPTED** by the Council of the City of Grants Pass, Oregon, in regular session this 3rd day of August 2016, with the following specific roll call vote:

**AYES:** Hannum, Roler, DeYoung, Lovelace, Lindsay

**NAYS:** None      **ABSTAIN:** None      **ABSENT:** Riker

**SUBMITTED** to and Approved by the Mayor of the City of Grants Pass, Oregon, this 3 day of August 2016.

/s/ Darin Fowler  
Darin Fowler, Mayor

#### ATTEST:

/s/ Karen Frerk      Date submitted to Mayor: 8/3/2016  
Karen Frerk, City Recorder

Approved as to Form, Mark Bartholomew, City Attorney  
/s/ Mark Bartholomew

# Measure 17-74 Josephine County

## Referred to the People by Initiative Petition

# 17-74

### Four-Year Deputies, Prosecution, Treatment and Jail Beds Tax

**QUESTION:** Shall County levy \$1.42 per \$1,000 assessed valuation for Deputies, Prosecution, Treatment, Jail Beds for four years beginning 2017-2018? This measure may cause property taxes to increase more than three percent.

**SUMMARY:** The purpose of this levy will be a \$1.42 per \$1,000 assessed valuation increase in real property taxes to pay for enhanced law enforcement purposes (including overhead). A five-person citizen oversight committee would ensure that monies are spent only "for law enforcement purposes". The Oversight Committee would be appointed by the County Budget Committee.

"Law Enforcement Purposes" are:

- Increase the number of patrol deputies to suppress criminal activity;
- Increase the number of deputies to enforce protective orders;
- Reduce deputy response times for incidents;
- Increase recording of responses to citizen incidents;
- Increase the number of detectives investigating crimes;
- Increase prosecution resources to reduce plea bargains and deter repeat offenders;
- Enhance treatment programs for those likely to benefit;
- Enhance probation services;
- Increase juvenile justice services;
- Provide more jail beds to narrow the "revolving door" criminals have historically enjoyed.

Any monies that come in from Federal Timber payments or from the Secure Rural Schools Fund for law enforcement purposes would remain dedicated for those purposes.

The amount of tax to be raised by this measure in 2017-2018 is approximately \$10,150,700, in 2018-2019 - \$10,455,300, in 2019-2020 - \$10,768,900, in 2020-2021 - \$11,092,000. The tax cost for this measure is an ESTIMATE ONLY based on the best information available from the County Assessor at the time of the estimate and may reflect the impact of early payment discounts, compression and the collection rates.

This measure requires that all monies received from Federal Timber payments or Secure Rural Schools Funding for law enforcement purposes shall remain dedicated to funding law enforcement purposes.

This measure creates a Citizen Oversight Committee, appointed by the county Budget Committee, that shall require that money be spent solely for law enforcement purposes.

This measure calls for a levy rate of \$1.42 per thousand dollars of assessed value. This measure shall be in effect for four-years starting in 2017. This measure automatically expires after four-years.

The estimated revenue to be raised by this measure in fiscal year 2017-2018 is approximately \$10,150,700; in 2018-2019 – \$10,445,300; in 2019-2020 – \$10,768,900; in 2020-2021 – \$11,092,000.

*(This information furnished by Ryan Mulkins, Josephine County District Attorney.)*

## Explanatory Statement

The revenue from this measure shall be spent on law enforcement in Josephine County. The funding will be used to:

- Increase jail capacity - to provide more jail beds to house criminals;
- Hire more Josephine County Sheriff's Office rural patrol deputies to respond to and investigate crimes occurring in Josephine County;
- Hire more Josephine County Sheriff's Office patrol deputies to enforce protective orders;
- Add Detectives to the Josephine County Sheriff's Office to investigate serious and complex crimes - (The Josephine County Sheriff's Office currently has no Detectives);
- Retain Deputy District Attorneys in the Josephine County District Attorney's Office to charge and prosecute cases investigated by law enforcement agencies;
- Increase treatment programs for criminal offenders with substance abuse and/or mental health problems;
- Increase probation supervision for criminal offenders; and/or
- Increase services to juveniles in Josephine County.



# Measure 17-74 Arguments

## Argument in Favor

### Good Reasons to vote YES on Public Safety Levy

**#1** -Public Safety costs will be spread more evenly between City and County; revenue is projected to be over \$10 million dollars. With the Federal Timber payments, the County Sheriff will have an adequate budget for better law enforcement. Timber payments are given to over 700 counties – Congress will not deny payments to only Josephine County. Sheriff Dave Daniel is doing a professional job and needs the opportunity to expand his effectiveness.

**#2** -Currently, Grants Pass City residents pay a Supplemental Levy of \$1.79, scheduled to expire in 2017. With the passage of the proposed countywide Levy, City residents will have the opportunity to vote NO on their Supplemental Levy and reduce their City property tax. The City, County, and School Districts need to increase accountability; consultant fees and no-bid contracts should be scrutinized. City residents also have more expenses coming, such as the \$300 million Public Works Bond approved by the City Council without a vote of the people.

**#3** -Although claimed by some people to be the answer to Public Safety funding, significant tax revenue from the marijuana industry has not materialized.

**#4** -Josephine County is poised to attract “Traded Sector” companies to this beautiful area. “Traded Sector” companies offer a product or service which is sold outside the County, bringing in revenue and increasing job opportunities. “Secondary Jobs” are those jobs which serve the existing economy (such as restaurants, retail stores, and other services). “Secondary jobs” circulate the money in the community, while “Traded Sector” companies bring in new money.

Ideally, we want to attract high-paying “Traded Sector” companies to Josephine County. These companies look at local Public Safety, Educated Workforce, and a Cooperative Business Climate, among other factors.

**To learn more about Issues and  
How you can help pass the Public Safety Levy visit:  
[www.GrantsPassOregon.com](http://www.GrantsPassOregon.com)**

Paid for by Toni Webb, Community Advocate for Transparency and Accountability

*(This information furnished by Toni Webb.)*

## Argument in Favor

### A Message from the Rogue Valley Fire Chiefs Association

The limited law enforcement presence presents a unique challenge for all of our emergency responders in Josephine County.

Rural fire departments or emergency responders should never be put in the position of no law enforcement back up for emergency calls. Nevertheless, it is happening with an awfully familiar regularity. Responders arrive to an emergency situation, often an assault, where the assault is still in progress. It is happening because residents in our community know firsthand there will be no response if they call for law enforcement and instead call saying there is a fire or medical emergency because the lights and sirens will scare away the offender. Our emergency responders, often firefighters, arrive at violent and dangerous situations they are not trained to respond to because there is no one else to call.

We must have adequate law enforcement in order to keep our firefighters and emergency responders safe. We have a community responsibility to make sure they are safe.

The Rogue Valley Fire Chiefs Association encourages you to vote YES on Measure 17-74. The men and women who keep our communities safe, both law enforcement and emergency responders, need your help and they need it today.

Sincerely,

Mike Kuntz

*VP, Rogue Valley Fire Chiefs Association*

*(This information furnished by Mike Kuntz, Rogue Valley Fire Chiefs Association.)*

"Measure arguments are printed as submitted. The printing of this argument does not constitute an endorsement by Josephine County, nor does the county warrant the accuracy or truth of any statements made in the argument."

"Measure arguments are printed as submitted. The printing of this argument does not constitute an endorsement by Josephine County, nor does the county warrant the accuracy or truth of any statements made in the argument."



# Measure 17-74 Arguments

## Argument in Favor

During the battered women's movement of the 1970s and 1980s, the protection of women from violence happening in their homes required a community-wide response. Across the country, Americans stood up and did the heavy lifting necessary to protect their friends and neighbors from unsafe conditions. In order to provide them with a basic standard of safety, there were efforts across the nation to increase the number of law enforcement and probation officers, battered intervention providers, judges, deputy district attorneys, nurses and doctors, jail beds and staff, and advocacy services.

Today, we are faced with a similar situation for Josephine County. Public safety in our county has eroded to dangerous levels with virtually no ability for emergency responders to come to our rescue in times of need.

The Illinois Valley Safe House Alliance provides services to victims and survivors of sexual assault, domestic and dating violence, stalking and human trafficking. Most of the survivors we talk with have given up on calling law enforcement. Their reasons are many: calls may not be classified as urgent, there are no officers on duty, and available officers are often 40 minutes away (if not farther), to name only a few. This is not even to mention the simple fact that our limited jail space means their abusers will be released from jail in a matter of hours and they could face retaliation.

The public safety levy is a step forward in protecting the most vulnerable in our community. It will cost the average homeowner \$24 monthly. We are paying much more for the social costs of our public safety crisis in our neighborhoods, schools, hospitals and streets.

Let's keep our family, friends, neighbors and children safe. Vote YES on Measure 17-74.

Chris Mallette

*Illinois Valley Safe House Alliance*

*(This information furnished by Chris Mallette, Illinois Valley Safe House Alliance.)*

## Argument in Favor

Vote YES on 17-74 to for Josephine County Law Enforcement

For 92 years, the Grants Pass & Josephine County Chamber has been committed to meeting the needs of the local business community. We share a commitment to help businesses thrive and create jobs for our working families in the Grants Pass & Josephine County area. Creating a strong local economy depends on cultivating the atmosphere, policies, programs and culture where business can grow.

Our commitment to the community is why the Chamber of Commerce encourages you to vote **YES** on the County 4 year Levy. We also know money from this levy can only be used to for these purposes:

- Increase jail capacity and stop the revolving door to criminals.
- Increase the number of patrol deputies to suppress criminal activity;
- Increase the number of deputies to enforce protective orders;
- Reduce deputy response times for incidents;
- Increase recording of responses to citizen incidents;
- Increase the number of detectives investigating crimes;
- Increase prosecution resources to reduce plea bargains and deter repeat offenders;
- Enhance treatment programs for those likely to benefit;
- Increase juvenile justice services;

Businesses and skilled professionals are choosing not to locate here because of the lack of a working law enforcement system. We are losing the work force necessary to support business; therefore our existing businesses are losing customers and the community is not being supported for its needs.

We all know that jails and juvenile services are very important to creating a healthy local economy. National and local studies have identified public safety as the top quality-of-life factor cited by corporate executives in selecting locations for new business investment.

Join the Grants Pass Chamber of Commerce and vote YES on Measure 17-74. To provide a positive business climate and protect our community from criminals trying to take away our communities good name.

Grants Pass & Josephine County Chamber of Commerce

*(This information furnished by Colene Martin, Grants Pass & Josephine County Chamber of Commerce.)*

"Measure arguments are printed as submitted. The printing of this argument does not constitute an endorsement by Josephine County, nor does the county warrant the accuracy or truth of any statements made in the argument."

"Measure arguments are printed as submitted. The printing of this argument does not constitute an endorsement by Josephine County, nor does the county warrant the accuracy or truth of any statements made in the argument."

# Measure 17-74 Arguments

## Argument in Favor

**Every day in my medical practice I see young mothers whose addiction to dangerous drugs is compromising the health of their unborn children.** As an OB-GYN physician, I deliver many babies who are already addicted to the drugs their mothers are taking. Those babies likely will suffer withdrawal symptoms at birth. Exposure to drugs can compromise an unborn baby's chance of having a healthy childhood and a productive life.

**The loss of adequate public safety has become a serious public health issue in our county.** I moved here in 2001 to join a local women's health practice. The number of pregnant women who use drugs during pregnancy has increased to a troubling percentage over that time. Chances are the baby I deliver to a drug-addicted mother will face painful drug withdrawal before even having a chance to develop into a normal child.

**I believe there is a direct link to babies born with drugs in their system and the public safety crisis.** As a doctor, I can't say that the lack of law enforcement is responsible for the increase in drug use among pregnant women, but common sense tells me the trends are strongly related.

Josephine County is known far and wide as a haven for law-breakers and drug dealers. It is widely known that we lack even the most basic resources such as enough jail beds to lock up criminals. As a result, law enforcement is forced to hand out tickets instead of getting criminals off the street; many of which will continue to sell drugs to young women.

**Giving our children a good start in life is our best hope for a bright future. I will vote YES for measure 17-74.** As a doctor, a mother, and a resident of Josephine County, this is something positive I can do for my community and the new babies I get to meet every day.

Felicia Cohen, MD

*(This information furnished by Felicia Cohen, MD.)*

## Argument in Favor

### **Yes on Measure 17-74 = Funding for Law Enforcement**

We all have a fundamental right to understand how government spends our tax dollars. As a former insurance agent, I understand the importance of accountability. Unfortunately, government programs are rarely as efficient as they should be if they do not have appropriate checks and balances. Thankfully, the way Measure 17-74 has been written, the money collected is directed to very specific services and can only be spent with due authority.

That means, by law, monies generated by the levy would be required to be spent on the following:

- Increase the number of patrol deputies to suppress criminal activity;
- Increase the number of deputies to enforce protective orders;
- Reduce deputy response times for incidents;
- Increase recording of responses to citizen incidents;
- Increase the number of detectives investigating crimes;
- Increase prosecution resources to reduce plea bargains and deter repeat offenders;
- Enhance treatment programs for those likely to benefit;
- Enhance probation services;
- Increase juvenile justice services;
- Provide more jail beds to narrow the "revolving door" criminals have historically enjoyed.

Most importantly, Josephine County Commissioners would have no discretion on how the funds are spent.

The levy would cost the average homeowner approximately \$24 a month. While this increase may be burdensome for some homeowners, state law protects the elderly and homeowners on fixed and limited incomes who can't afford local property taxes to help them stay in their homes.

A YES vote on Measure 17-74 guarantees that police and deputies will finally have the funding they need to help keep our communities safe.

Harry T. Mackin

*(This information furnished by Harry T. Mackin.)*

"Measure arguments are printed as submitted. The printing of this argument does not constitute an endorsement by Josephine County, nor does the county warrant the accuracy or truth of any statements made in the argument."

"Measure arguments are printed as submitted. The printing of this argument does not constitute an endorsement by Josephine County, nor does the county warrant the accuracy or truth of any statements made in the argument."

# Measure 17-74 Arguments

## Argument in Opposition

### Oregon's Unfunded PERS Liability Climbs to \$21.8 Billion!

Could PER's be the real reason for 17-74?

This "Ballot Title" was challenged by Mr. Rossi in Court, (Case # 16CV23788), Jim was attempting to protect voters from this "Vague, Un-concise and Confusing measure", even Judge Newman stated the Ballot Summary was vague, then, ruled to allow the measure as written. **Vote No!**

*"Increase the number of patrol deputies.."* **From \*8.65 FTE's to ??**  
*"Increase the number of deputies to enforce protective orders;"* **From \*3.1 FTE's to ??**

*"Reduce deputy response times..."* **Not even when we had full funding!**

*"Increase recording of responses to citizen incidents;"* **From \*75 FTE's to ??**

*"Increase the number of detectives investigating crimes;"* **From \*0 FTE's to ??**

*\*source Sheriff's 2015-16 budget/schedule"D"*

*"Increase prosecution resources..."* **Prosecutions are Mandated by the State, and paid by, US!**

*"Enhance treatment programs for those likely to benefit;"* **Itemize them!**

*"Enhance probation services;"* **How?** (already Budgeted for \$ 5,623,000.00 with 30 FTE's)

*"Increase juvenile justice services;"* **Give Juveniles some of our jail space, & save \$90,300.00!**

*"Provide more jail beds..."* **We already have 262 beds!**

If passed, 17-74 Levy Revenue will be place in the Josephine County General Fund, after, 10% is skimmed off for the **Internal Services Fund**. Neither, the Oversight Committee or 17-74 measure **will** have, the Authority beyond, insuring the Taxes go to the General Fund, for the Board of County Commissioners to distribute at will.

If passed, will the current Funds already budgeted for Law Enforcement, still go to Law Enforcement? **Very Doubtful!**

### **Obvious Solutions:**

**Stop** paying our DA's salary & benefits **\$ 32,297.00**. (DA's State Salary **IS** \$90,972.00)

How's about **renting jail beds** out to other counties?

Since **80%** of the Crime is committed in Grants Pass, shouldn't Grants Pass pay for **80%** of the 262 jail beds?

Donations to the Sheriff, go directly to the Sheriff's Budget, not the general fund, avoiding the ISF's. **So, Donate** rather than passing 17-74, its Tax-Deductible.

### **Vote No**

Paid by w4acg.com

*(This information furnished by Kurt Ramme, We're for A Constitutional Government.)*

## Argument in Opposition

### As A Businessman . . .

As a professional businessman, when I approach a bank and ask for 42 million dollars, I know the bank will ask for a detailed description of what I am planning to do with the money.

The bank will want to see my justification for needing the 42 million dollars. They may question how I arrived at my overhead percentages, or what my employee benefits package costs are, or the variables in my seasonal expenses.

Banks expect a detailed breakdown of how the money they provide will be used. And they will insist on assurances that I spend the money as proposed.

If I approach the bank without those details, the bank executive would smile pleasantly and inform me that:

- 1) I am an amateur and therefore will need professional guidance with loan applications before approaching the bank again.
- 2) I have not thought through my plan sufficiently and am not clear on what the goals of my project are.
- 3) I have unrealistic expectations of a bank's generosity.

### The Taxpayers are the Bank.

When taxpayers are asked for 42 million dollars, they expect to receive similar accountability and financial details as does a bank. They expect the same assurances as a bank that the money will be used as promised. And without those details and assurances they too conclude that:

- 1) The people asking are amateurs.
- 2) They have no detailed plan.
- 3) They have unrealistic expectations of the taxpayer's generosity.

That is why the taxpayers, like a bank, smile pleasantly and say "No."

**Please smile pleasantly with me and Vote "NO"** on the \$1.42 property tax levy that is created by amateurs, with no detailed plan, and totally unrealistic expectations of the Taxpayer's generosity.

Bill Hunker, Candidate for County Commissioner, Position 3

*(This information furnished by William Hunker.)*

"Measure arguments are printed as submitted. The printing of this argument does not constitute an endorsement by Josephine County, nor does the county warrant the accuracy or truth of any statements made in the argument."

"Measure arguments are printed as submitted. The printing of this argument does not constitute an endorsement by Josephine County, nor does the county warrant the accuracy or truth of any statements made in the argument."

# Measure 17-74 Arguments

## Argument in Opposition

**Vote No on 17-74 ~ We simply can't afford it!**

County Tax Rates will increase between **11.3** and **23.7%**.

**Delinquent** 2015 property Taxes was \$ 185,310.00. Many more could be on the edge of **becoming** delinquent! **When** Taxes go up, Businesses will raise prices!

**Did you know**, the 2015-16, **Per-Capita** personal average income was ~ \$ 33,577.00? And the, **Josephine Counties** 2012 **Outstanding** General Obligation **PERS Bond** is \$ 8,205,000.00?

**Adding** more taxes at a time when we can least **afford** it, is irrational!

**Also Vote No on State Measure 97 ~ Its BAD for Business!**

Measure 97 is anticipated to increase Oregon State Revenues by **3 Billion Dollars** per **Y E A R** beginning, July 1, 2017, on **Gross Sales**. Out-of-state/and other sales could be exempt.

Don't be, **fooled** into believing this is **ONLY** a corporation tax. This is an Oregon State **Sales Tax**.

This **TAX** is calculated on Gross Sales of \$ 25 Million or more, not on profits, as in income taxes.

**Meaning: If** corporation "A" sells to corporation "B" and corporation "B" sells to a wholesale distributor and the wholesale distributor sells to a retailer and the retailer then sells to customers, guess who pays the Collective Tax? The **Oregon Consumer**, that's who! Don't think for a second that the, corporations, distributors and the retailers **will** absorb **Measure 97 Tax increase!**

**Measure 97** claims to spend the **3 Billion Dollars** a year on "Education, Healthcare and Senior Services. **But**, Oregon's **Unfunded PERS** Liability Climbed to **\$21.8 Billion**.

**Why?** Could it be because, there's more than 121,000 Oregon Retirees living in Oregon, and over 19,500 Retirees across the nation, receiving Oregon PER's!

Most of us realize, if we continue paying PER's it could bankrupt Oregon, we need **retroactive** reform, Now!

**Vote No on State Measure 97 and the AllCare Measure 17-74**

Consider voting for Arron Auer (governor) Bill Hunker (commissioner) Mr. Rafferty (clerk) paid by Hardwoods Plus Company

*(This information furnished by James Rafferty.)*

## Argument in Opposition

**Vote No on 17-74 and State Measure 97**

1. **The Board of County Commissioners Refuse to Fund our Sheriff**, even when given the opportunities to do so, **Why Should We?**
2. There's **No Crime Crisis** in Josephine County!
3. If passed, **GP City taxes could go up as high as \$ 13.98/1000** assessed property value.
4. When Taxes go up, **Rents Go Up!** Apt., Home, Businesses, and the cost of living.
5. If passed, **\$ 4,246,690.00** of the Levy would go to the **Internal Services Fund**.

**Who's Behind This Levy?**

Josephine County Safety Committee pac #18088. James Dittmer and Colene Martin, were both the Initiative Petition Chief Petitioners. Colene Martin is currently the Grants Pass & Josephine County Chamber of Commerce **President/CEO**, and, currently on the board of **Directors**, of Mid Rogue IPA and Mid Rogue Foundation, which have ties to AllCare Health.

JoCo Safety Levy pac #18188 was formed, by Josh Balloch VP of Government Relations AllCare Health. Why have two active Political Action Committees? **Smoke-n-Mirrors?**

**Who's Funding 17-74?**

AllCare Physicians pac replaced Mid Rogue Physicians pac. It was, Mid Rogue Physicians pac#17638 who previously donated \$20,000 to CUFS pac in support of the May 2015 property tax Levy.

The Levies Major donor, AllCare Physicians pac donated **\$17,000.00** to Josephine County Safety Committee pac #18088, which in-turn donated \$4,238.00 to JoCo Safety Levy pac #18188. Additionally, one individual donated \$200.00.

**Why**, is AllCare Health, CEO, Doug Flow involved in Josephine County Property Tax issues, and **investing** Thousands **\$\$\$** of their profits? **What do they aim to gain?**

**Why**, does it appear that AllCare Health media ad's are in support of 17-74 without directly expressing their support? It might be to influence the voters without having to publicly report their activities?

The preponderance of evidence implies that AllCare Health is emphatically supporting measure **17-74 Property Tax Levy!**

Please **Vote No on 17-74 and State Measure 97**

for more info & Paid By w4acg.com

*(This information furnished by Jim Rafferty, We're for a Constitutional Government.)*

"Measure arguments are printed as submitted. The printing of this argument does not constitute an endorsement by Josephine County, nor does the county warrant the accuracy or truth of any statements made in the argument."

"Measure arguments are printed as submitted. The printing of this argument does not constitute an endorsement by Josephine County, nor does the county warrant the accuracy or truth of any statements made in the argument."

# Measure 17-74 Arguments

## Argument in Opposition

BAIT and SWITCH!

1. The BAIT. To provide a safer environment against crime in Josephine county. Hiring more employees such as Sheriff patrol persons, Detectives, and MORE jail beds. A five person OVERSIGHT committee appointed by the Budget committee, to ensure proper expenditures of taxation. Why do we need another committee?
2. The SWITCH. Moneys go to the general fund. The debt for the retirees of Pers. Some of which are from law enforcement, so guess that counts as law enforcement distribution of tax dollars?
3. The BAIT. \$1.47 per \$1000.00 of Assessed valuation.
4. The SWITCH. The tax cost for this measure is an ESTIMATE ONLY. The TRUTH. This measure may cause property taxes to INCREASE more than 3%.
5. The BAIT. Jail BEDS to narrow the "Revolving Door".
6. The SWITCH. Who is watching the Door? Lots of beds are not used NOW!  
TAXES ARE NOT THE ANSWER TO LOWER CRIME RATES.  
PROPERTY TAXES ARE NOT THE ANSWER to MISMANAGEMENT. TAXES ARE NOT THE ANSWER. THE ANSWER IS ACCOUNTABILITY!  
THIS TAX LEVY IS AN ILLUSION. THE MAGICIANS ARE THOSE WHO WANT YOUR MONEY. WHEN THEY HAVE YOUR MONEY IT WILL DISAPPEAR. And you won't know where it went ....

*(This information furnished by Sandy Drake.)*

## Argument in Opposition

***Oregon is the Number 1 Tax and Spend State in the West.***

Oregon's governments spend \$8,157 dollars per person, per year. No other Western State comes close. Per capita, Oregon outspends 39 other states.

In fact, Oregon spends \$2,606 dollars MORE per person every year, than California, who spends only \$5,551 per capita.

***Josephine County is holding up their end of the bargain.***

The City of Grants pass is proposing a huge 300-million-dollar bond. (Look for big jumps in your city water bill.) These are the folks who awarded the \$108,000-dollar bus shelters. True tax and spend Oregonians.

Now the county has a new, small group of, (to borrow Einstein's definition) "insane" people who are hoping, once again, for a different result. They creatively added 2 more cents to the failed levy of last year, making a nice round \$1.42. True Oregon tax and spend wisdom at work.

This newest iteration of the levy was created by AllCare Health. I have a problem with a tax initiative being birthed in the boardroom of one of the largest corporations in Josephine County and then attempting to sell it as a grass-roots effort. -- a "by the people and for the people" initiative.

AllCare health donated 20 thousand dollars to last year's losing property tax levy. This year they are virtually the sole backers of this new levy. If it were a true grass-roots effort, it would not be on the ballot today.

***AllCare Health's money wields influence.***

AllCare just donated \$20,000 to Kate Brown, Oregon's Governor. Their two next largest candidate donations went to a Josephine County Commissioner Candidate (\$5,000) and a sitting Josephine Commissioner (\$3,500). Political donations are legal. However, if you believe there is no potential conflict of interest when County Commissioners vote on county insurance issues with AllCare Health as the county's current health insurance vendor -- you are naive.

Bill Hunker, County Commissioner Candidate, Position 3

*(This information furnished by William Hunker.)*

"Measure arguments are printed as submitted. The printing of this argument does not constitute an endorsement by Josephine County, nor does the county warrant the accuracy or truth of any statements made in the argument."

"Measure arguments are printed as submitted. The printing of this argument does not constitute an endorsement by Josephine County, nor does the county warrant the accuracy or truth of any statements made in the argument."



# Measure 17-74 Arguments

## Argument in Opposition

### VOTE 'NO' ON MEASURE 17-74

#### We said **NO eight times** already!

Voters have said "No" to eight Public Safety levies since 2004. Many simply can't afford the extra expense.

But our County Commissioners aren't listening. If this Measure passes, for the next four years:

#### **Your property taxes will be increased significantly! Rents will be going up even higher!**

Landlords must increase rents to pay these additional taxes.

To find out exactly how much extra you will pay, multiply 0.00142 times the Assessed Value of your property. This is the additional taxes owed.

#### **0.00142 x Assessed Value of Property = Additional Taxes Now ADD that amount to what you already pay!**

#### **Can you afford this?**

Remember: assessed Values go up 3% each year, and many people can barely pay their current tax burdens.

#### **Renters, Seniors and those on fixed-incomes will be hit the hardest!**

It has to stop! Citizens are fed up with local government promising to do better if we only give them more money. The reality is the County is not accountable for the funds already collected

Just look at the Measure's write-up. There's no specific appropriation for the funds, and they don't even define what is considered "overhead."

To make matters worse, this Measure allows for an "Oversight Committee" to ensure the distribution of funds. These five people, appointed by the Budget Committee, are not accountable to the electorate in any way. If they misappropriate money, we have absolutely no recourse to correct the situation.

And this is the same Budget Committee who refused to give reserve funds from Public Works to the Sheriff this year.

#### **They purposely did not give the Sheriff available money!**

Don't be fooled! This extra money will most assuredly go to the salaries, benefits and PERS retirements of government employees. It will have very little impact on improved or increased services to the public.

### VOTE 'NO' ON MEASURE 17-74

*(This information furnished by Anthony Javoric.)*

## Argument in Opposition

### Measure 17-74, The AllCare Health Property Tax Levy, **VOTE NO!!!**

We the people are pissed off, the corruption in Josephine County never stops. Once again, AllCare Health has funded the new property tax levy without providing a spreadsheet on how our hard earned tax dollars will be spent. The last property tax levy was voted down and Josephine County was still able to come up with 3 brand new sheriff patrol SUV's. I call that forcing government to be efficient with our tax dollars. Why should we expect anything less?

Now to cover it's investment, AllCare Health has donated \$5,000 to commissioner candidate Lily Morgan. Who believe this is not intended buy her loyalty and support for future AllCare Health tax proposals? Lily Morgan has never worked in private industry only government, she is a long time union member and well invested into PERS. Her voting record as a city council member was for ALL tax measures. Morgan's campaign manager, a life long democrat, was the chief petitioner on the last property tax levy. Morgan will continue to tax & spend, the democrat way.

AllCare Health, rather then lower our medical bills, has donated outrageous amounts of money to political candidates. \$20,000 to Governor Brown and \$5,000 to City Councilwoman Morgan. Does anyone have any questions the intent of AllCare Health? They are circumventing you and I the voter and placing corporate interests first.

This voting cycle we face a \$6 billion state tax increase affecting every citizen in Oregon an additional \$600.00 per year, \$43 million Josephine County tax increase, \$300 million city tax increase and don't forget about the coming minimum wage increase. Oregon is the highest per capita in tax & spend of all the western states. Who can even afford to live in Oregon anymore? Now we have corporations buying influence by campaign donation and Morgan took their money.

Vote **NO** on ALL proposed taxes.

Vote **HUNKER**, the "No New Taxes" candidate.

*(This information furnished by Joseph Rice, Pacific Patriot Network.)*

"Measure arguments are printed as submitted. The printing of this argument does not constitute an endorsement by Josephine County, nor does the county warrant the accuracy or truth of any statements made in the argument."

"Measure arguments are printed as submitted. The printing of this argument does not constitute an endorsement by Josephine County, nor does the county warrant the accuracy or truth of any statements made in the argument."

# Measure 17-75 Josephine County

Referred to the People by the Josephine County Board of Commissioners

## 17-75

An Ordinance Imposing a Tax on Selling Retail Recreational Marijuana

**QUESTION:** Shall the County impose a 3% tax on the retail sale of recreational marijuana and marijuana products?

**SUMMARY:** This measure establishes a tax of 3% on the retail sale of recreational marijuana and marijuana products. The tax would not apply to sales that occur within the city limits of Grants Pass and Cave Junction. Retail sellers of recreational marijuana would pay the tax directly to the County. The tax applies only to recreational marijuana. The tax would not apply to transactions that are authorized under the Oregon Medical Marijuana Program.

Marijuana has the definition found in state law. That definition includes all parts of the plant Cannabis family Moraceae, but does not include industrial hemp.

This tax applies only to retail sales. Retail sales include direct sales to marijuana consumers. Retail is different from wholesale. Wholesale involves sales to purchasers who will resell the marijuana to other sellers.

This tax would generate an unknown amount of revenue. The County could spend the revenue only on public health, education and treatment related to marijuana and marijuana products, and public safety.

returns each quarter with the Tax Collector to demonstrate that they are complying with this ordinance. The owners would also pay the tax each quarter. Failure to comply with the records requirements could result in a \$1000.00 fine. Failure to pay the tax could result in a penalty of up to 40% of the unpaid portion of the tax. Failure to pay fines or penalties could result in a tax lien against the real and personal property of the business owner.

The ordinance would go into effect upon approval by a majority of voters in this election. The ordinance would not apply to sales that occurred before its effective date.

This tax would generate an unknown amount of revenue. The revenue from this tax could be used only for public health, education and treatment related to marijuana and marijuana products, and public safety.

*(This information furnished by the Josephine County Board of Commissioners.)*

## Explanatory Statement

Two years ago, Oregonians voted to legalize recreational marijuana. State law now allows counties to impose up to a 3% tax on retail sales of recreational marijuana and marijuana products. A county can impose the tax only upon approval by the voters. Retail sales include any transfer of marijuana and marijuana products, except for transactions that are authorized under the Oregon Medical Marijuana Program and transactions between licensed sellers. Retail is different from wholesale. Wholesale involves sales to purchasers who will resell the marijuana to other persons.

This ordinance provides for a 3% tax on the total amount of the gross taxable retail sales of recreational marijuana. This ordinance would apply to sales that occur only within the unincorporated areas of the County. The ordinance does not apply within the city limits of Grants Pass and Cave Junction. The owners of businesses that sell retail recreational marijuana would collect the tax from their customers at the time of sale. The business owners would then be responsible for paying the tax to the Josephine County Treasurer/Tax Collector.

This ordinance defines marijuana the same way that state law defines the substance. Under current law, Marijuana includes all parts of the plant Cannabis family Moraceae, whether growing or not; the resin extracted from any part of the plant; and every compound, manufacture, salt, derivative, mixture, or preparation of the plant or its resin. Marijuana does not include industrial hemp. The definition of marijuana in the ordinance is found in state law. If the definition in state law changes then the definition in the ordinance would also change.

Owners of retail recreational marijuana businesses would file tax



# Measure 17-75 Josephine County

## ORDINANCE NO. 2016-005

### AN ORDINANCE IMPOSING A TAX ON THE RETAIL SALE OF RECREATIONAL MARIJUANA AND MARIJUANA PRODUCTS

WHEREAS, the Josephine County Charter provides that the County has all powers necessary for the conduct of its affairs, consistent with the Constitutions and laws of the United States and the State of Oregon; and

WHEREAS, Oregon's voters and Legislature have enacted laws relating to the taxation of retail sales of recreational marijuana and marijuana products; and

WHEREAS, counties are newly authorized by state law to enact a tax of up to three percent (3%) on the retail sale of recreational marijuana and marijuana products to consumers within their jurisdictions; and

WHEREAS, a county tax on retail sales of recreational marijuana and marijuana products shall go into effect only upon approval by the majority of a county's electors at a regularly scheduled general election; now, therefore,

The People of Josephine County ordain as follows:

#### **SECTION 1.00 TITLE**

This ordinance shall be known as the Josephine County Retail Sale of Recreational Marijuana Tax Ordinance.

#### **SECTION 2.00 PURPOSE AND INTENT**

The purpose of this Ordinance is to impose a tax on the retail sale of recreational marijuana and marijuana products within the unincorporated areas of Josephine County.

#### **SECTION 3.00 DEFINITIONS**

The following are definitions for the purpose of this ordinance and for the purpose of any agreement entered into pursuant hereto and for any actions taken as authorized pursuant to this ordinance and otherwise:

- A. "Consideration" means anything of value that is given or received either directly or indirectly, whether through sales, barter, trade, fees, charges, dues, contributions, donations, or reimbursements, whether financial or otherwise.
- B. "Consumer" means a person who purchases, acquires, owns, holds or uses recreational marijuana or marijuana products other than for the purposes of resale to a Business Owner.
- C. "Distribute" means to deliver, convey, transfer, sell, consign or otherwise give to another, recreational marijuana or marijuana products. Outright gifts are excluded from the meaning of "distribute," "distributed" or "distribution." Any transfer for financial consideration, however received, is a distribution. Distribution also includes, but is not limited to, any transfer that is accompanied by or results in a reciprocal gift, donation, reimbursement, trade, or any other form or transfer for financial consideration.
- D. "Gross taxable sales" means the total amount received in money, credits, property or any other consideration from the sale of recreational marijuana or marijuana products.
- E. "Marijuana" has the definition found in ORS 475.005(16). Marijuana does not include industrial hemp, as defined in ORS 571.300.
- F. "Marijuana product" means any and all products

of whatever type that contain any element, salt, compound, derivative, mixture, resin, or other preparation of marijuana and that is intended for use or consumption by any means.

- G. "Owner of Business" or "Business Owner" means that person or entity holding the license from the Oregon Liquor Control Commission (OLCC) to sell recreational marijuana or marijuana products.
- H. "Person" includes any natural person, any corporation, professional corporation, nonprofit corporation, cooperative corporation, any profit or nonprofit unincorporated association, business trust, limited liability company, general or limited partnership, joint venture, any legal entity, and any unincorporated group acting in common.
- I. "Retail" and "Retail sale" includes any distribution of recreational marijuana or marijuana products, and does not include transactions that are authorized under the Oregon Medical Marijuana Program.
- J. "Sale" or "sell" means the transfer of recreational marijuana or marijuana products from one person to another for consideration. A transfer of recreational marijuana or marijuana products is a sale if the person transferring the marijuana received any type of consideration as described herein, whether directly or indirectly, whether at the time of the transfer or at some other time.
- K. "Tax" means the tax imposed by this ordinance on the sale or transfer of recreational marijuana or marijuana products.

#### **SECTION 4.00 AUTHORITY**

- 4.01 The Board of County Commissioners of Josephine County recognizes, declares and establishes the authority of the Board of Commissioners to tax the sale of recreational marijuana and marijuana products within Josephine County, and to assess, calculate, collect and enforce a tax on all such activities.
- 4.02 This ordinance does not apply to premises located within the city limits of incorporated cities within Josephine County, nor to activities conducted solely within such city limits.

#### **SECTION 5.00 TAXATION**

- 5.01 There is hereby levied and shall be paid by every Business Owner a tax on the privilege of retail distribution or sales of recreational marijuana and marijuana products to consumers as defined in this ordinance.
- 5.02 The tax shall be in the amount of three percent (3%) of the total amount of the gross taxable sales of recreational marijuana and marijuana products to consumers per calendar quarter. Every Business Owner shall be responsible for the collection of the tax from the consumer at the time of the sale, and shall be responsible for the payment of the tax to the Josephine County Tax Collector. Any tax owing to Josephine County through the office of its Tax Collector shall be a debt owed to the County by the Business Owner. The County may undertake any action permitted by law to collect the debt.
- 5.03 Every Business Owner shall be entitled to a deduction

# Measure 17-75 Josephine County

against the tax of the amount in the form of refunds actually returned to the purchaser.

- 5.04 Every Business Owner shall file a Notice of Operation with the Josephine County Tax Collector within 30 days of passage of this ordinance, or upon establishment of the business, whichever is sooner.
- 5.05 Every Business Owner shall make a return to the Josephine County Tax Collector on the fifteenth day of January, April, July, and October, reporting the total amount of gross sales for the immediately preceding three-month period. The return on January fifteenth shall report the gross sales for the preceding months of October, November and December; the return on April fifteenth shall report the gross sales for the preceding months of January, February and March; the return on July fifteenth shall report the gross sales for the preceding months of April, May and June; and the return on October fifteenth shall report the gross sales for the preceding months of July, August, and September.
- 5.06 Every return listed in Section 5.05 shall be accompanied by payment of the total amount of the tax for that quarter. Payment of the tax is due at the time the return is filed. The return is filed when the Josephine County Tax Collector actually receives it.
- 5.07 A Business Owner aggrieved by any action or decision of the Board of County Commissioners may appeal the decision by filing a writ for judicial review with the Circuit Court of the State of Oregon for Josephine County.
- 5.08 Every person engaged in the retail sale of recreational marijuana and marijuana products shall keep accurate records detailing the revenue and expenses incurred. Such records shall specify the time period for which they apply, which shall be not less than one week and not more than one month. Such records shall be kept and maintained upon the premises where the activity is conducted, and such records shall be available for inspection by County authorities during business hours upon twenty-four (24) hours' notice.

## **SECTION 6.00 ENFORCEMENT**

- 6.01 Enforcement of the provisions of this ordinance is the joint responsibility of the Josephine County Sheriff and the Josephine County Tax Collector. Each of those officers is authorized by the adoption of this ordinance to take any and all actions necessary to enforce the provisions of this ordinance, consistent with the provisions of the Constitutions, statutes, and rules of the State of Oregon and the United States.
- 6.02 Notice of Noncompliance with this ordinance shall be by written notice, delivered by certified mail to the occupant or person in charge of the premises where the violation occurred, by certified mail to the Owner of the Business, and by posting of the written notice in a prominent place at or on the front door of the premises.
- 6.03 The Owner of the Business may contest the Notice of Noncompliance by delivering a written statement to the Board of County Commissioners no more than twenty-one (21) calendar days after the date of the Notice of Noncompliance. The Board of County Commissioners shall then schedule a public hearing regarding the violation as soon as practicable, and shall provide the

Business Owner with an opportunity to be heard and to present relevant evidence.

- 6.04 After the Tax Collector notifies noncompliant persons pursuant to the process set forth in this ordinance, the Board of County Commissioners may impose penalties through a written Order consistent with Section 7 of this ordinance. Such an order may be approved no fewer than twenty-one (21) calendar days after the Tax Collector provides a Notice of Noncompliance to all persons that the Tax Collector finds to be in violation, or after a public hearing to contest the Notice of Noncompliance, whichever is later.
- 6.05 An aggrieved Business Owner may appeal the imposition of any penalty imposed under this ordinance by filing a writ for judicial review with the Circuit Court of the State of Oregon for Josephine County.

## **SECTION 7.00 PENALTIES**

- 7.01 Failure to pay the tax in the full amount at the time it is due is a violation of the provisions of this ordinance. Any Business Owner who fails to pay the total amount of the tax at the time it is due shall pay a penalty of ten percent (10%) of the unpaid portion of the tax. If the balance due is not paid within thirty (30) days of the due date, the Business Owner shall pay an additional penalty of thirty percent (30%) of the unpaid balance.
- 7.02 If a Business Owner fails to make the return required by Section 5.05 when due, the Josephine County Tax Collector shall estimate the tax due. Within forty-five (45) days after the due date of the tax, the Tax Collector shall assess against the Business Owner the estimated tax and notify the Business Owner in writing of the assessment pursuant to Section 6. The Tax Collector shall also notify in writing the Sheriff, the Board of County Commissioners and the Oregon Liquor Control Commission of the noncompliance. If the Business Owner fails to file the return and pay either the estimated tax and associated penalties or the actual tax based upon the return and the associated penalties, the Sheriff, the Tax Collector, and the Board of County Commissioners shall take any action permitted by law to collect the tax and to secure the cessation of the Business Owner's activities until payment is made.
- 7.03 Failure to maintain the records required by this ordinance or failure to make such records available for inspection is a violation of this ordinance and shall subject the violator to a penalty of \$1,000.00.
- 7.04 All fines, penalties and unpaid taxes imposed or assessed under the provisions of this ordinance shall become liens against the real and personal property of the Owner of the Business. Josephine County may use any legal means to facilitate the collection of all such fines and penalties, as well as the taxes imposed by this ordinance.

## **SECTION 8.00 EFFECT OF ADOPTION**

- 8.01 Upon its effective date, this ordinance imposes a tax upon the privilege of engaging in the retail sale of recreational marijuana or marijuana products within the unincorporated areas of Josephine County, and imposes restrictions and regulations upon persons engaging in such activities.
- 8.02 This ordinance is not retroactive. Transactions

# Measure 17-75 Josephine County

---

conducted prior to the effective date of the ordinance are not affected and are not subject to the tax. All transactions conducted on or after the effective date of this ordinance are subject to the tax.

- 8.03 The revenue from this tax shall be used for public health, education and treatment related to marijuana and marijuana products, and public safety.

## **SECTION 9.00 SEVERABILITY**

In the event that any part of this ordinance shall be held by a court to be invalid or unenforceable, the remaining sections shall be unaffected and shall remain in full force and effect.

## **SECTION 10.00 EFFECTIVE DATE**

First reading by the Board of County Commissioners this 27 day of July, 2016.

Second reading and adoption by the Board of County Commissioners at least thirteen (13) days from the first reading this 10 day of August, 2016. This ordinance shall take effect upon approval by the voters of an authorizing measure at the election of November 8, 2016.

JOSEPHINE COUNTY  
BOARD OF COMMISSIONERS

/s/ Cheryl Walker  
Cheryl Walker, Chair

/s/ K.O. Heck  
K.O. Heck, Vice Chair

/s/ Simon G. Hare  
Simon G. Hare, Commissioner

ATTEST:

/s/ Wendy Watkins  
Recording Secretary

APPROVED AS TO FORM:

/s/ M. Wally Hicks  
Wally Hicks, Legal Counsel

# Measure 17-76 Williams Rural Fire Protection District

Referred to the People by the Williams Rural Fire Protection District Board

## 17-76

### Five-year local Option Tax for General Operations

**QUESTION:** Shall the fire district levy \$0.65/\$1000 assessed value for five years for improvements and general operating purposes beginning 2017/2018? This measure may cause property taxes to increase more than three percent.

**SUMMARY:** The Board of the Williams Rural Fire Protection District has determined that the need exists for the district to continue to replace and/or upgrade various equipment and facilities. This is necessary to continue to maintain our level of service to the community and operation of the district.

This measure authorizes the district to levy property tax at a rate \$0.65 per \$1000.00 assessed valuation each year commencing the fiscal year beginning July 1, 2017 for five consecutive years. This levy would fund the replacement and upgrade of public safety equipment and facilities to include: a Disaster Operations Center/Shelter for major disasters in the community, improvement to facilities for resident volunteer firefighter living quarters, replacement of Type 6 wildland engine and the cost of borrowing. An estimate of the total to be raised each fiscal year is:

FY 2017-18 \$107,033

FY 2018-19 \$109,709

FY 2019-20 \$112,451

FY 2020-21 \$115,263

FY 2021-22 \$118,144

strike, and the Williams Fire District wants to be prepared to offer the highest level of service to our community. We all have the responsibility to maintain a level of self-sufficiency and be prepared for a disaster but the Williams Fire District believes the need exists in our community for a Disaster Operations Center/Shelter so we can take care of our own citizens.

The new quick response wildland fire apparatus will replace the current apparatus, which is an old 1987 wildland apparatus with high mileage. It has become expensive to maintain and no longer meets the needs of the volunteer firefighters providing wildland fire response to our community. This piece of equipment is vital to the fire district to continue to provide the highest level of service to our community on wildland fires.

The addition of a resident volunteer firefighter living quarters to our facilities would allow us to provide a better level of service to the Williams Community. It has been extremely difficult to find and maintain volunteer firefighters in our community and we strive to be creative and implement new ideas that are fiscally responsible and still continue to provide the highest level of service to our community.

*(This information furnished by Mike Kuntz, Fire Chief of the Williams Rural Fire Protection District.)*

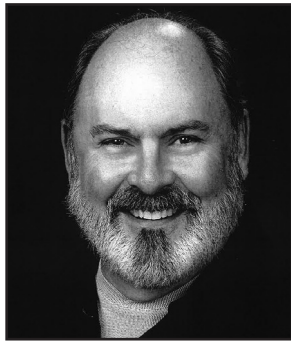
## Explanatory Statement

The residents of the Williams Rural Fire Protection District currently pay \$1.0552 per \$1000 of property value to support the operation of the Williams Volunteer Fire District. Emergency response equipment, maintenance, and operational needs have been met by a combination of the tax base, grants, donations, and a few other minor income sources. This combination of funding is insufficient to support the three major projects that the Williams Fire District Board believes the fire district needs in order to offer an improved level of service to the residents of the Williams community. The three major projects are a Disaster Operations Center/Shelter, improvement to facilities for resident volunteer firefighter living quarters and a new quick response wildland fire apparatus.

The Williams Rural Fire Protection District is looking for approval by the voters for \$0.65 per \$1000 assessed value for a period of five years which will increase the tax rate to a total of \$1.7052 per \$1000 assessed value. This rate continues to be significantly less than the rate paid by residents of the Applegate Fire District, Illinois Valley Fire District, and Wolf Creek Fire Districts.

The Disaster Operations Center would be constructed on the property behind the current fire station and be used for a Red Cross shelter in the event of any disaster in our Williams Community including but not limited to a major wildland fire, earthquake, flood event or any other event where there is a need to feed or house our citizens. This building will also act as a backup communications center for our community in the event of a major disaster. No one knows when a disaster will

**Josephine County**  
County Commissioner, Position 2



**Dan DeYoung**  
Nonpartisan

**Occupation:** Grants Pass City Council President.

**Occupational Background:** Owner, All Seasons Heating and Air, 34 yrs.

**Educational Background:** Grants Pass High School, 12.

**Prior Governmental Experience:** Grants Pass City Council President; Budget Committee; Rogue Valley Commission on Transportation, 6 yrs; Middle Rogue Metropolitan Planning Organization, 2yrs.

A Grants Pass native, Dan has served our country in the US Navy, the community as the 'Voice of Boatnik' with the Grants Pass Active Club for 30 years, and various organizations in the valley.

Running a business for 34 years gave DeYoung the opportunity to have firsthand experience in operating a budget, managing personnel, setting goals and learning the value of an honest day's work. Dan has taken these tools and put them to work for the City of Grants Pass for the last 6 years.

Dan's extensive business background will bring a common sense approach that is desperately needed in County Government and government in general. He'll take that valuable experience and put it to work for you.

"Josephine County is my home. It's not broken, but we face serious challenges to not only ensure the safety of our citizens, but to restore a sense of community and pride; to use this land of natural beauty and resources to further support and improve our lives. I plan to take my experience in volunteer service, business and government leadership to be a part of a team that brings fresh clarity of purpose and efficiency to our county while exploring and implementing long term, stable solutions for generations to come" – Dan DeYoung

"I've witnessed Dan DeYoung's innovative thinking and leadership for 30 years. Don't waste this vote... Dan has the guts, integrity and perseverance this job needs. Josephine County needs the leadership Dan will bring to the office." - Kurt Heater

"As a fellow business man for the last 34 years, I feel Dan will bring fresh ideas and a needed management style to Josephine County." - Dave Thomason

*(This information furnished by Dan DeYoung.)*

Candidate statements are printed as submitted. The above information has not been verified for accuracy by the county.

**Josephine County**  
County Commissioner, Position 2



**Keith Heck**  
Nonpartisan

**Occupation:** Commissioner, Position Two.

**Occupational Background:** Program Director, KWBI-FM, Morrison, CO; Missionary, Thailand with Overseas Missionary Fellowship; Executive Director,

Gospel Rescue Mission; Pastor: Englewood, CO; Boulder, CO; Bartlesville, OR, Grants Pass, OR; County Commissioner, Position Two.

**Educational Background:** Anaheim Adult High School, Anaheim, CA - Diploma; BIOLA University; Western Bible College, now merged with Colorado Christian University, Lakewood, CO, Bachelor Arts, Biblical Education.

**Prior Governmental Experience:** County Commissioner, elected November 2012.

I have been privileged to serve the citizens these last four years as one of your Commissioners. I had much to learn. I believe the County has benefited. I am asking for your continuing support by re-electing me for another four-year term.

My purpose of continuing to serve as your Commissioner is first and foremost to continue to listen to you as to your concerns and then presenting your concerns to those seeking solutions. I do not need to always be talking. I know that together we can solve your problems. I am a believer in a united approach to solving issues.

I have deep confidence in a God who is good and does good and therefore we can seek much greater heights than what we see and currently enjoy. I am an optimistic realist who believes that, together, we can conquer great obstacles even in the face of great peril.

The issues facing us as citizens are large. I am also confident that as we work together toward a common goal of what is in the best interest to the citizens we can and will be successful. I want to be on board that winning team.

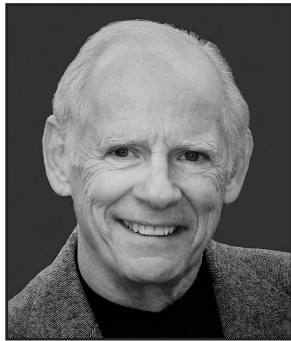
I desire to emulate Michelangelo who stated at the end of his life: "I am still learning." May we all continue to learn.

*(This information furnished by Keith Heck.)*

Candidate statements are printed as submitted. The above information has not been verified for accuracy by the county.



**Josephine County**  
County Commissioner, Position 3



**Bill Hunker**  
Nonpartisan

**Occupation:** Building my own home, managing investments.

**Occupational Background:** Chief Operating Officer, Wholesale & Hearty Foods. Took it public in 1991. Became the fastest growing stock in America in

1993; Brought builders and bankers together to finance building projects in downtown Wailuku, Maui; Television producer for 23 years; Independent Producer for US Navy Trident Missile Guidance National Quality Awareness program for 7 years.

**Educational Background:** Bachelor of Science, Pacific Union College, CA; Masters Courses: Stanford U., University of Oregon.

**Prior Governmental Experience:** None.

**Vote Bill Hunker for financial sanity and stability.**

Trust is built by effective leadership & transparency. Without transparency there can be no accountability. I will hold department heads accountable to live within a budget the citizens can afford, and prioritize spending responding to citizen input.

**As your Commissioner, I will:**

- Use all possible funds within the existing budget for the Sheriff's office. The current Commissioners have left millions sitting in reserve funds that could fund the Sheriff. I will do everything in my power to change that.
- Aggressively pursue our legal rights to responsibly use the timber and minerals in our county.
- Remove bureaucratic red tape to economic development and create a welcoming and supportive environment for entrepreneurs, industry, and small businesses.
- Protect your private property rights by minimizing regulations and restrictions.
- Continuously work to ensure that Josephine County lives within its means
- Keep you fully informed and pay attention to your input.
- Not be influenced by special interest groups.

**I do not support the proposed \$1.42 Tax Levy, the latest attempt to fleece the taxpayers while leaving millions of dollars in County reserve accounts untouched.**

Josephine County is an exceptional place to live, to work, to conduct business and develop a thriving economy. I have the private sector business experience to make that happen.

**Vote for a Private-Sector Professional . . . It's Time**

For more, visit: [www.billhunker.com](http://www.billhunker.com)

*(This information furnished by Bill Hunker.)*

Candidate statements are printed as submitted. The above information has not been verified for accuracy by the county.

**Josephine County**  
County Commissioner, Position 3



**Lily Morgan**  
Nonpartisan

**Occupation:** Parole/Probation Supervisor.

**Occupational Background:** City Councilor (2010-2015); Public Safety professional; Business professional (marketing).

**Educational Background:** Graduate, Grants Pass HS; BA (sociology), Seattle Pacific University; MA (management) candidate, Southern Oregon University.

**Prior Governmental Experience:** Twice Elected Grants Pass City Council President/Councilor; Parole/Probation Officer, Josephine County; 911 Dispatcher, Grants Pass; Dispatcher/Reserve Deputy, Josephine County Sheriff's Office.

I was born in Josephine County to small business owners and raised to be community minded and to serve others. This value is something my entire life has been focused on.

If elected, I pledge to work tirelessly to strengthen confidence in our county government, keep our community safe, minimize waste and bring more jobs and business into our county.

I will work with my fellow commissioners and county staff to earn your trust. Together we can make a dramatic improvement in the performance and integrity of our county government.

Keeping people safe is my first priority. As a public safety professional, I have seen firsthand the chaos directly caused by the collapse of public safety funding in Josephine County. We absolutely must address this crisis with a permanent solution that grows our economy.

We can and must do better as a community to make Josephine County safe for our children and their future families. I will lead by reaching out to citizens and our public safety community to build consensus around new and creative solutions to make our community safe.

As part of the City Council, I fought to prioritize spending and cut projects to rent jail beds. We reduced fees to make the process easier for new businesses to create jobs; updated the charter to give voters more say on vacancies; created an audit process for higher transparency and accountability, and returned tax dollars after completing a redevelopment agency.

I will apply my experience and skills every day to make sure you and your family feel safe and respected in your interactions with your county government.

[www.votelilymorgan.com](http://www.votelilymorgan.com)

*(This information furnished by Lily Morgan.)*

Candidate statements are printed as submitted. The above information has not been verified for accuracy by the county.

## Josephine County County Clerk & Recorder



**James Rafferty**  
Nonpartisan

**Occupation:** Business Owner.

**Occupational Background:** 24 years Hardwoods Plus Company; 20 years Telecommunications, Harris Corp. Farinon Division; 1965-1969 USAF Honorably Discharged.

**Educational Background:** Graduated, Sequoia High School; Attended Jr. College night school off-n-on 1969-1972.

**Prior Governmental Experience:** Team member, Hwy-199 Expressway Upgrade, Citizens Advisory Committee 2005-2008.

**I Pledge, Not to spend OR receive more than \$750.00 for my campaign.**

[www.w4acg.com](http://www.w4acg.com) [rfcc@w4acg.com](mailto:rfcc@w4acg.com) 541-226-4411 [facebook](#)

**Hello**, I'm Mr. Rafferty, seeking your vote for this Distinguished Office, which, I will faithfully and morally hold. I'm, duty bound by my oath, the US/State Constitutions and JoCo Charter. **I will NOT take PER's!**

### **If I'm Elected Clerk,**

the county clerk's office will **endeavor** to provide, voters with at least **Two** candidates for every JoCo elected office.

I'll **evaluate** and downsize large precincts, forming new precincts as needed.

I aim to **provide** the option of voting at, **Your** precinct, **On election days only**.

the county clerk's office will provide a **public accounting** of all ballots purchased & issued.

the county clerk's office **will hand count & tabulate** ballots. The count **will be** accurate with no question of honesty that some claim counting machines have.

the county clerk's office will verify **100%** of Initiative, Referendum and Re-call petitions, **No Sampling**.

the county clerk's office **will accept** and record lawful **Land Patents**, issued by the BLM which gives a Title at Law that's far Superior to title's acquired by other means. (*granted by Congress, April 24, 1820*)

### **Also**

- I intend to Provide a "Notary Public" service.
- Explore Adding "**None of the Above**" as a Josephine County Ballot option.
- Investigate "**Drug & Alcohol Testing**" for all JoCo candidates.
- Research "**Citizen Generated**," Advisory Ballot Questions.
- Recommend **changing Oregon's Primary Election to "March"**.

**Elect Mr. Rafferty Josephine County Clerk**

Please Consider Electing Aaron Auer Governor and Bill Hunker Commissioner

*(This information furnished by James Rafferty.)*

Candidate statements are printed as submitted. The above information has not been verified for accuracy by the county.

## Josephine County County Clerk & Recorder



**Trisha Myers**  
Nonpartisan

**Occupation:** Josephine County Clerk & Recorder.

**Occupational Background:** Chief Deputy County Clerk: Josephine County, 2012-2015; Deputy County Clerk: Josephine County, 2006-2012; Substitute

Teacher; Grants Pass School District #7 & Three Rivers School District, 2003-2006.

**Educational Background:** Hidden Valley High School; Rogue Community College, Landscaping, General Studies; Southern Oregon University, B.S.-Psychology, M.A.-Teaching.

**Prior Governmental Experience:** County Clerk & Recorder; Chief Deputy County Clerk; Deputy County Clerk; Board of Property Tax Appeals Clerk, Recording Specialist; Oregon Association of County Clerks.

### ***TRISHA MYERS has the experience and knowledge required to maintain records as County Clerk & Recorder.***

The Clerk's office is responsible for maintaining the official records of Josephine County pertaining to Voter Registration, Elections, Real Property, Mining Claims, Commissioners' Journal, Marriages, and Board of Property Tax Appeals. As your current County Clerk and a long-time employee of the Clerk's office, I have been directly involved in maintaining these records in accordance to the law and making them available for public inspection and purchase.

### ***TRISHA MYERS has the experience and knowledge required to conduct elections as County Clerk & Recorder.***

Of all of the services the Clerk's office provides, the most complex is ensuring that elections are conducted within accordance to local, state, and federal requirements. During my time at the Clerk's office, I have been involved with twenty-two elections. My duties have included all aspects of the elections process from Petitions, Voter Registration, Candidate Filings, Voters' Pamphlet Filings, Ballot Creation, Ballot Insertion, Signature Verification, Tabulation, Write-in Processing, and Certification.

### ***TRISHA MYERS has the experience and knowledge required to serve the citizens as County Clerk & Recorder.***

It's imperative the County Clerk have an extensive working knowledge of local, state, and federal requirements that encompass the services the office provides to the citizens of Josephine County. I have the experience and knowledge and understand the importance of these services and look forward to continuing to serve the citizens of Josephine County.

Vote  
**TRISHA MYERS**  
for  
County Clerk & Recorder

*(This information furnished by Trisha Myers.)*

Candidate statements are printed as submitted. The above information has not been verified for accuracy by the county.



## Josephine County County Treasurer



**Eva L.I.  
Arce**  
Nonpartisan

**Occupation:** Josephine County Treasurer.

**Occupational Background:** Josephine County Treasurer 2013 - to Present; Chief Deputy Treasurer/Chief Administrative Supervisor Josephine County

2006-2013; Chief Deputy Tax Collector 2002-2013; Accounting Technician Josephine County 1999-2002; Accounting Specialist Josephine County 1995-1999; Bakery owner/Manager; Cashier.

**Educational Background:** Grants Pass Public Schools grades 1 through 12; Rogue Community College Technology and Business classes; Rosny College Hobart Tasmania Australia Accounting and Australian History; Continuing Education classes in Taxation and Treasury management; Session leader in various continuing education classes in Taxation.

**Prior Governmental Experience:** Josephine County Treasurer 2013- to Present; Chief Deputy Treasurer/Chief Administrative Supervisor Josephine County 2006-2013; Chief Deputy Tax Collector 2002-2013; Accounting Technician Josephine County 1999-2002; Accounting Specialist Josephine County 1995-1999; President of the Oregon Association of County Tax Collectors 2005.

Eve Arce has worked diligently in her first term of office as the Josephine County Treasurer to maintain the high standards of customer service to the public and receiving the best possible return for money invested.

Eve Arce has worked in the Josephine County Treasurer's office since 1995. Eve has implemented many cost saving and efficiency measures in the Treasury Office. The same work today is accomplished with three less staff than in 1997. Eve Arce understands the need to continually find ways to reduce costs and improve efficiency and will work to maintain excellent customer service.

The treasurer is the county banker, managing cash and investments, ranging from \$30 million to over \$60 million, accounts for all County income and pass-through receipts. Eve Arce believes the County Treasurer plays a very important role in county government, keeping cash safe, maximizing investment returns, and making sure money is available to pay bills on time.

Eve Arce has the integrity, experience and ability to continue the safe and efficient management of the Treasurer's office in the best interests of the citizens of Josephine County. Eve will ensure continued efficient and productive financial management as well as friendly and courteous service in the Treasurer's Office.

*(This information furnished by Eva L.I. Arce.)*

Candidate statements are printed as submitted. The above information has not been verified for accuracy by the county.

## City of Grants Pass City Council, Ward 1



**Mary Theresa  
Wertz**  
Nonpartisan

**Occupation:** Graphic Design Lead.

**Occupational Background:** Reporter, Illinois Valley News, Cave Junction.

**Educational Background:** University of Oregon, 1993 BA,

Journalism; News-Editorial, Rogue Community College.

**Prior Governmental Experience:** None.

I love living in Grants Pass. We are a hub for many outdoor recreational opportunities like river rafting, fishing, hiking and mountain biking. We have a reputation as a friendly community open to all. Our unique city is becoming a favored destination for visitors. I want to help promote and lead our city as a new member of the city council. I offer my experience and enthusiasm and vision for an even better community.

Our schools and libraries need to be adequately funded to provide quality education to our youth. We need more affordable, subsidized rental housing for seniors on fixed incomes and families living on minimum wage. I will be a strong advocate for bike and walking paths, parks, art and recreational programs, which are all vital to a healthy community.

Let's work to recruit businesses that focus on environmentally friendly products and employee people at a living wage. Let's promote organic farms growing non-GMO food and herbs on our fertile farmland.

Grants Pass should have some services reinstated, like the juvenile shelter/detention facility. I will work for programs that help get people off the streets and back to work. Public safety is a concern for all city residents.

My background as a single mother and full-time employee will provide a fresh perspective on the city council. I offer a positive vision for moving our city forward and am ready to work for you and our wonderful community.

I respectfully ask for your vote for Grants Pass City Council Ward 1 (Northwest).

*(This information furnished by Mary Theresa Wertz.)*

Candidate statements are printed as submitted. The above information has not been verified for accuracy by the county.

**City of Grants Pass**  
City Council, Ward 1



**Tyler P  
Flaming**  
Nonpartisan

---

**Occupation:** Commercial real estate owner/manager; Real estate developer.

**Occupational Background:** Pharmacist Service Drug Store; Former owner/operator Service Drug Store; Commercial real

estate owner/manager.

**Educational Background:** Grants Pass High School, 12; Lewis and Clark College (freshman year); Oregon State University, Bachelors of Science; Pharmacy.

**Prior Governmental Experience:** None.

I am a long time resident of Grants Pass and am running for City Council, Ward 1. Since returning to the area approximately twenty-years ago, I have been active in community and various civic organizations including the Grants Pass Rotary Club, Grants Pass Active Club, and Board of Directors for the Barnstormers Theatre. I also serve as an advisor for the Grants Pass High School Rotary Interact Club, and recently to the AS-PIRE program (also at GPHS), which provides assistance and mentoring to students to achieve increased access to higher education and training beyond high school.

I believe in fiscally responsible, accountable local government. I am conservative in my political leanings, while forward looking towards a sustainable and efficient government administration. As a councilman, my role is to ensure that the interests for our city and the values of our community are protected.

I am committed to our community and committed towards making it better for all. I look forward to serving on the council and both the challenges and opportunities to come.

*(This information furnished by Tyler P. Flaming.)*

Candidate statements are printed as submitted. The above information has not been verified for accuracy by the county.

**City of Grants Pass**  
City Council, Ward 2



**Chris  
Burrow**  
Nonpartisan

---

**Occupation:** Retired; Teacher.

**Occupational Background:** Electronic Technician; Architectural Artist; Food Machinery Company; Earthlink; Hobby Shop; Teacher.

**Educational Background:**

Beardon High School; University of Tennessee, (Liberal Arts); State Technical Institute at Memphis, (Architecture), Business management courses; Drafted, Ship Fitter A/B school; Fire Fighting A school; Ship Damage Control A school; Security and weapons training, 15 yrs.

**Prior Governmental Experience:** United States Navy.

The position of City Council is a Non-Partisan Position. I intend to bring a Veterans view point to the council. My experience with other Veterans more than anything has given me strength and resolve. Our community has made a sincere effort to attend our Veterans but we can do more.

In the thirty years of my residence here, I have developed a love for and a deep connection with my neighborhood. I'd like to encourage more communication between the residents of Grants Pass and the council.

I have run a successful small business. I have developed the skills and strengths necessary not only for successful private business endeavors, but those same and likewise essential qualities which an effective council member must possess. From vision, innovation and creativity to sustain a competitive edge in the market place, to leadership and supervision over personnel and the insight and analysis necessary for profit and financial health, I will bring all these skills and strengths to the position.

*(This information furnished by Chris Burrow.)*

Candidate statements are printed as submitted. The above information has not been verified for accuracy by the county.



**Valerie Lovelace**  
Nonpartisan

**Occupation:** Retired Elementary Teacher Grants Pass School District 7; currently serving appointed position on Grants Pass City Council; Advisory Board, Imagine That Creative Children's Center.

**Occupational Background:** 4 years Rogue River Middle/Elementary School; 23 years Lincoln Elementary.

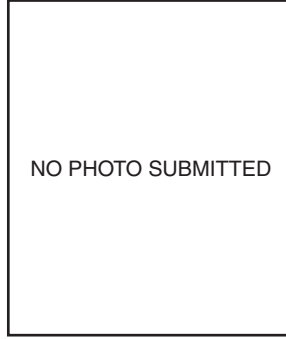
**Educational Background:** BS Elementary Education Southern Oregon University; Graduate work Counseling.

**Prior Governmental Experience:** Currently filling appointed position City Council Ward 2.

I have lived in Southern Oregon for 40 years. In 1976 I moved to Williams where I lived for 6 years before moving to Grants Pass. I have raised my 4 children in this wonderful community, and have been involved in their activities, as well as teaching for the past 38. As a teacher I served in various leadership roles including Site Council at Lincoln Elementary School. My passion as a teacher of 5th & 3rd grade was Math and Science, as well as teaching civic responsibility and economics. Benjamin Franklin remains my hero. I am lucky enough now to have the time and energy to give back. My hopes are to keep this community a wonderful place to raise families, and provide opportunities for them to prosper and be safe. I also know our climate draws those wanting to retire in a beautiful environment, I can't blame them, that is why I stay. Balancing growth while maintaining safety is a job of government. I believe in a responsive and responsible government. As a councilor it is my job to keep the communication open between the public and those managing our money. The city is a multi-million dollar business operation responsible for keeping its citizens safe and enhancing their quality of life. They need to use the citizen's money responsibly, considering both quality and fiscal concerns when making decisions. It is the council's job to keep them accountable, and help make those decisions. Please vote for me to continue in my role as City Councilperson Ward 2.

*(This information furnished by Valerie Lovelace.)*

Candidate statements are printed as submitted. The above information has not been verified for accuracy by the county.



**Don Hartline**  
Nonpartisan

**Occupation:** retired.

**Occupational Background:** contract sign maker, Hufman signs, Roseburg Or., 1989-1998; Donrey media, Reno & Las Vegas, nv., 1984-1986, 1988-1989.

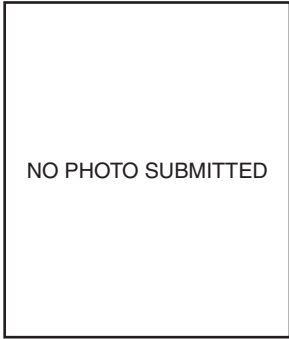
**Educational Background:** St. Aquinas, Thomas high school, San Berdo, ca.; sonar school, usn, San Diego, ca., STG 3.

**Prior Governmental Experience:** none.

*(This information furnished by Don Hartline.)*

Candidate statements are printed as submitted. The above information has not been verified for accuracy by the county.

**City of Grants Pass**  
City Council, Ward 4 (4 Year Term)



**Barry Eames**  
Nonpartisan

**Occupation:** Retired.  
**Occupational Background:** Owned and operated Eames and Associates Real Estate Appraisers company for 35+ years; Mr. Eames was a founding board member of the Community Bank

of Grants Pass and served as Board Chairman from 2000 to 2001.

**Educational Background:** Graduated Grants Pass High School 1964; Graduated from the University of Oregon with a Bachelor of Business Administration degree in 1970; Earned the Senior Residential Appraiser designation from the Society of Real Estate Appraisers.

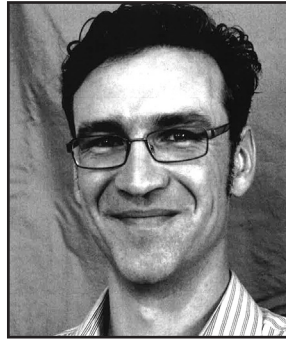
**Prior Governmental Experience:** Served on the Josephine County Airport Advisory Board.

Barry Eames has lived in the city of Grants Pass for the previous 55 years. During that time he has completed his schooling, raised a family and operated a Real Estate Appraisal Company. He has been active in civic affairs as a member of the Grants Pass Active Club for over 20 years and as a member of The Grants Pass Rotary Club. He has a commercial pilots license and has over 2,000 hours of flight time. He feels that living in the City of Grants Pass has been a blessing. As a city councilman, he will work diligently to maintain the friendly atmosphere of the city while assuring that services are provided to the citizens for a comfortable life. This includes well planned and sustainable growth by providing the necessary infrastructure. Mr. Eames feels that serving on the city council will be a privilege and an honor and will work tirelessly for the citizens of Grants Pass.

*(This information furnished by Barry Eames.)*

Candidate statements are printed as submitted. The above information has not been verified for accuracy by the county.

**City of Cave Junction**  
Mayor



**Daniel Dalegowski**  
Nonpartisan

**Occupation:** Owner/operator of Drupalique LLC.

**Occupational Background:** Illinois Valley Community Access to Technology and Information (2007 to 2011); Oh Sung Sik English Academy (2005 to 2006).

**Educational Background:** Illinois Valley High School (Class of 1998); Portland State University (Bachelor of Science: History).

**Prior Governmental Experience:** Cave Junction City Council #3 (2011 to present); Cave Junction City Council president (2013 to present); Director, Illinois Valley Watershed Council; Associate Director, Illinois Valley Soil and Water Conservation District.

Cave Junction, Illinois Valley, and Southern Oregon are in the midst of swift and significant change. A peculiar, hidden economic boom is apparent in the tall fences everywhere, new people from all over the world, and new businesses providing soil, amendments and growing supplies. Likewise, many established businesses are seeing a revival--particularly restaurants, gas stations, and other service providers--due to an exploding customer base.

On the other hand, there are serious problems facing our community: inadequate law enforcement, insufficient resources for those that have fallen through the cracks, and sub-standard visitor and tourist services to name a few.

I believe that if we carefully understand the changes underway and use the limited power of city government to guide those changes that we can achieve a more positive future.

As mayor of Cave Junction I will strive to:

- \* Welcome entrepreneurs including those operating in the cannabis industry;
- \* Establish new funding mechanisms for the City including special business privilege taxes that fairly reflect real profits in cannabis and other industries;
- \* Provide law-enforcement service at night;
- \* Work with existing public and private service providers to create effective pathways out of addiction;
- \* Revise City plans to include missing essential components: town square, more visitor parking, and waterfront park; and
- \* Be open to new ideas and not dead-set on any agenda.

With a holistic, adaptive approach, we can create a more resilient and prosperous community in the midst of change that is inevitable.

*(This information furnished by Daniel Dalegowski.)*

Candidate statements are printed as submitted. The above information has not been verified for accuracy by the county.

**City of Cave Junction**  
Mayor



**Donald G Moore**  
Nonpartisan

**Occupation:** Retired.

**Occupational Background:** United Airlines, 32 1/2 years- Three Meritorious Award; Co-owner, Francis & Moore Construction; President & CEO, Dependable Van Pool.

**Educational Background:** San Jose City College; Merit College; Boeing Commercial Aviation; United Airlines Management School.

**Prior Governmental Experience:** Mayor, City of Cave Junction, 2008-2010; City council Member, October 2007-2008; Chair, Josephine County Rural Planning Commission; Airport Advisory Commission; JOCO Long Term Budget Committee; Energy Auditor For State & Federal Buildings.

My fellow citizens of Cave Junction, if you elect me as your Mayor, I will strive for a fair & balanced city budget and operate within that budget and not waste it on frivolous matters and lawsuits.

During my incumbency as Mayor, I have performed as Public Works Director to cut cost for the city. In that capacity, I coordinated and approved the Kerby Water District that until now brings money to the city and was able to establish our own water backflow testing instead of outsourcing the service. The money saved was used to hire a deputy police help for 20 hours a week. We have deputies when I was mayor and we can do it again.

It was the **safety of the people** that made me coordinate with ODOT to put up a traffic light at River and 199 streets in the city. It is for the same reason that I intend to hire additional police force to provide protection for the citizens and businesses in the city.

It is my oath to bring revenue to this city that will foster economic development with will create jobs for all.

I am again compelled by my genuine desire to support my fellow citizens of Cave Junction to better our city from its present situation. My solid experience and proven record are what I offer you to choose my leadership again. Together we can build a great city that at this time we can only hope for.

*(This information furnished by Donald G. Moore.)*

Candidate statements are printed as submitted. The above information has not been verified for accuracy by the county.

**City of Cave Junction**  
City Council, Position 4



**Mark Dillinger**  
Nonpartisan

**Occupation:** Retired.

**Occupational Background:** Hotelier.

**Educational Background:** N/A.

**Prior Governmental Experience:** None.

“IF IT IS TO BE, THEN IT IS UP TO ME” is the moto of this candidate. Our city is falling into a state of disrepair. We do not like what we see. Visitors and Citizens alike do not feel safe doing the things that they did five short years ago. In order to reverse that trend we must be willing to use creative solutions. Code Enforcement is one of the fastest ways to start accomplishing this task. Residents must be able to feel safe and confident in being a part of the rebuilding efforts that challenge our City’s future. We need to be listened to and not feel summarily dismissed. We need to know where our leaders stand and know that those leaders have but ONE agenda. That agenda must be to quickly reverse the trend that brings down the value of our properties and that discourage income producing visitors to our valley. Too long have our officials been accused of promoting personal agendas rather than those items that affect us all.

Having a career as a hotelier in one of the world’s most visited tourist and vacation destinations gives this candidate the genuine experience to know that a city must do to survive the future. He is proud to be pragmatic, unafraid, results oriented, bold, honest, action-taking, and creative in dealing with issues that may require compromise rather than autocratic decision making and hidden agendas. He is for us!!

*(This information furnished by Mark Dillinger.)*

Candidate statements are printed as submitted. The above information has not been verified for accuracy by the county.



## City of Cave Junction City Council, Position 4



**John L  
Gardiner**  
Nonpartisan

**Occupation:** Livestock farmer;  
River Restoration Consultant.

**Occupational Background:**  
1970: Engineer, Soil Mechanics  
Ltd, UK; 1972: Thames Water  
Authority, Rivers Division; 1989:  
Technical Planning Manager,

National Rivers Authority, UK; 1995 - 1998: Tenured Professor  
of Sustainable Management, London; 1998 - 2001: Principal-in-  
Charge, Philip Williams Associates, Portland.

**Educational Background:** 1960: Hampton Grammar School;  
1967: Imperial College, London University - BSc Civil Engineer-  
ing; 1987-90: Southampton University - PhD in River Basin  
Management.

**Prior Governmental Experience:** Cave Junction City Council -  
elected 2013; IV Soil & Water Conservation District - elected 2014.

I was elected to the Cave Junction City Council 4 years ago,  
and have maintained good attendance. My experience as a  
professional Civil Engineer (50yrs in river management), has  
been helpful in dealing with the City's water issues. With Ford  
Leadership Program Cohort #2, I helped convert a lifeless  
ditch outside Evergreen Elementary School into an attractive  
bioswale as our community project.

As an IVCDO Board Member, I'm seeking more ways to benefit  
the youth of our community. Developing a City Parks & Recre-  
ation Master Plan would enable us to win grants to expand our  
parks and recreation facilities. A second baseball park near  
the existing one in Jubilee Park would offer first class baseball  
to our young athletes, and would put Cave Junction on the  
baseball tournaments map.

I support 'localization' of our IV economy. By spending our  
dollars locally, our local economy improves - meaning more  
prosperity and jobs, unlike spending in regional superstores.  
Many people would appreciate shopping near home.

Our community enjoys a rich artistic life - from regular musical/  
theatrical performance to 'fine art', soon to be further recog-  
nized by the planned Creativity Awards, part of our new IV  
20/20 Strategic Plan conducted by IVCDO in 2016.

I've heard pleas for representation for non-City residents on  
the Council. Many owners/managers of City businesses live  
outside City limits. I welcome City business representation on  
the Council. Please attend CJ City Council meetings and let  
your voice be heard.

*(This information furnished by John L. Gardiner.)*

**Candidate statements are printed as submitted. The above information has  
not been verified for accuracy by the county.**

**BE SURE TO  
SIGN  
YOUR  
BALLOT RETURN  
ENVELOPE**



**VOTE!**

**VOTE!**

**VOTE!**

BALLOTS  
**MUST** BE RETURNED  
BY 8:00 PM  
ON  
ELECTION DAY  
NOVEMBER 8, 2016

See next page for a List of Official Ballot Drop Site Locations.

# **BALLOTS MUST BE RETURNED BY 8:00 PM ON ELECTION DAY NOVEMBER 8, 2016**

**POSTMARKS DO NOT COUNT! If you are unable to mail your ballot by November 1st, please consider using an Official Ballot Drop Site to ensure your ballot is received before the deadline.**

## **Josephine County Official Ballot Drop Site Locations**

Open from October 20, 2016 until 8:00 p.m. on November 8, 2016

### **Josephine County Courthouse:**

**The County Clerk's Office** (7:50 a.m.-5:00 p.m., Monday-Friday) *Open 7 a.m. until 8 p.m. on election day*

**Justice Building side, ground floor next to the elevator** (24 hours / 7 days)

**Next to the "C" Street Entrance (Tax Office Entrance)** (24 hours / 7 days)

### **South Grants Pass:**

**Washington Federal, 290 Union Avenue, front parking lot** (24 hours / 7 days)

### **Library Drive-up Ballot Drop:**

**Josephine Community Library, Parking lot behind library. Enter from "C" Street** (24 hours / 7 days)

### **Merlin:**

**Umpqua Bank, Merlin Rd. & Monument Dr., parking lot** (24 hours / 7 days)

### **Murphy:**

**Hidden Valley Market, in front, on the left side of the building** (24 hours / 7 days)

### **Cave Junction:**

**Cave Junction City Hall, near front entrance** (24 hours / 7 days)