

**CITY OF HUNTINGTON WOODS
HISTORIC DISTRICT COMMISSION**

**AGENDA
July 6, 2022
City Hall
26815 Scotia**

7:30 P.M.

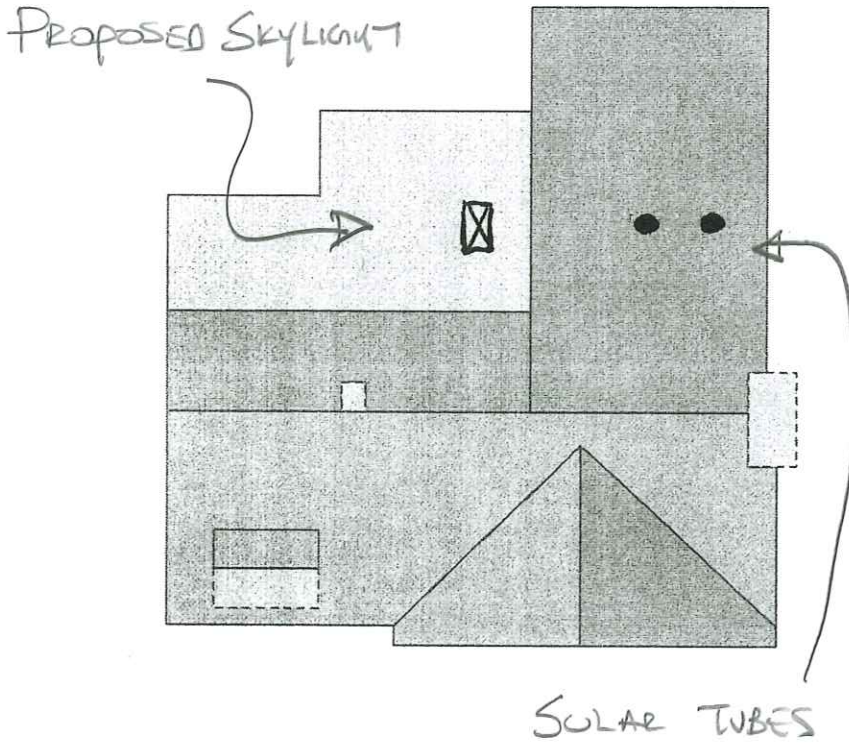
1. Call to Order
2. Approval of Minutes - May 4, **2022**
3. Applications
 - A. Matter of a review for Skylight and roof perforations for light tubes to the Appledorn Residence at 26836 York.
4. Other Business
5. Public Participation

You are invited to view the plans or documents online and present your thoughts to the Historic District Commission at the meeting, or you may view the plans or documents online at hwmi.org during the week prior to the meeting and present your thoughts by writing to the Historic District Commission at: Huntington Woods City Offices, 26815 Scotia Road, Huntington Woods, MI 48070. You may also email any thoughts or comments to hberry@hwmi.org. If you have any additional questions, please call the Planning Department at (248)581-2637.

Hank Berry Zoning Administrator- hberry@hwmi.org - 248-581-2637

Structure #2 Summary

26836 York Rd, Huntington Woods, MI 48070, USA



Measurements

Total Roof Area	1351 sqft
Total Pitched Area	795 sqft
Total Flat Area	555 sqft
Total Roof Facets	9 facets
Predominant Pitch	12/12
Total Eaves	68ft 2in
Total Valleys	36ft 11in
Total Hips	0ft 0in
Total Ridges	44ft 6in
Total Rakes	122ft 7in
Total Wall Flashing	34ft 1in
Total Step Flashing	35ft 2in
Total Transition	35ft 5in
Total Parapet Walls	0ft 0in
Total Unspecified	57ft 7in
Hips + Ridges	44ft 6in
Eaves + Rakes	190ft 8in

Pitch	0/12	2/12	12/12
-------	------	------	-------

Area (sqft)	231	325	795
Squares	2.4	3.3	8.0

Waste %	0%	10%	12%	15%	17%	20%	22%
---------	----	-----	-----	-----	-----	-----	-----

Area (sqft)	1,351	1,487	1,514	1,554	1,581	1,622	1,649
Squares	13.6	14.9	15.2	15.6	15.9	16.3	16.5

We've calculated the waste percentages you might expect for this job. A number of factors are involved in determining which waste percentage to use including: how complex the roof is, and your roof application style. These numbers only include the roof area. You will also need to calculate the quantity of materials you will need for hips, valleys, ridges, and starter lengths.
 This report was prepared by Roofr. Copyright © 2022 Roofr.com | All rights reserved.