

City of Hitchcock



Monthly Newsletter
July 2019

STORMWATER RUNOFF

WHAT IS STORMWATER RUNOFF?

During rain events, impervious surfaces such as rooftops, driveways, parking lots, and roads prevent water from being absorbed into the ground. When a rainfall event occurs, the portion of water that is not absorbed into the ground becomes what is known as “stormwater runoff”. All properties contribute to stormwater runoff and property owners are responsible for storm drainage flowing through their property.

This flowing water picks up and carries a wide variety of pollutants and debris – such as soil, fertilizers, pesticides, pet waste, trash and motor oil – which then flow into storm drains or channels and eventually empty into the waterways used for recreation and drinking water. Unlike typical household wastewater (from sinks, toilets and showers), stormwater is not filtered and treated at a wastewater treatment plant. This means that the everyday pollutants carried by stormwater runoff have a direct impact on our local water quality.

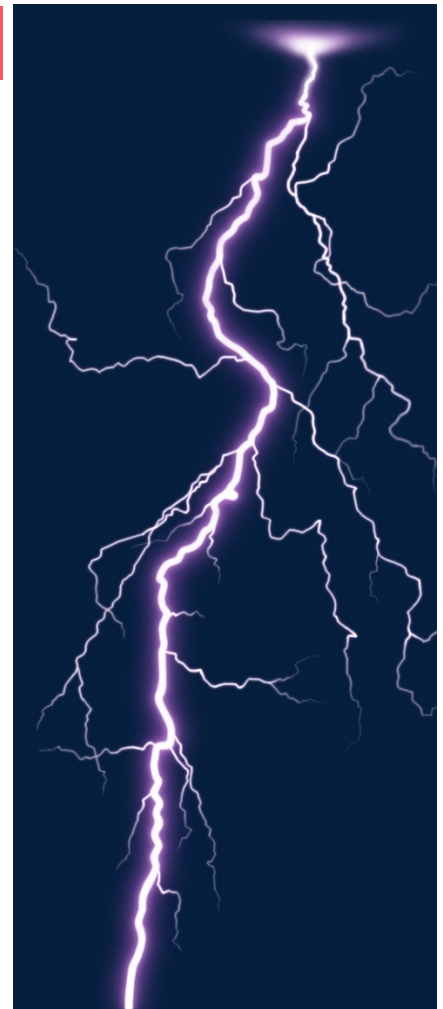
Property owners are responsible for maintaining drainage easements located on their property in a neat and clean manner. This may include routine grounds keeping such as grass mowing as well as removal of trash, vegetation, and debris. Owners should ensure that drainage systems and structures are kept free of yard waste (grass clippings, tree trimmings, fallen limbs, and leaves) or other obstructions (privacy fencing or retaining walls) that may block the flow of water. Driveways, and their associated culverts, bridges, or other appurtenances that cross public drainage systems (e.g., that cross over ditches or streams) are also property owner responsibilities.

Vegetative growth (trees, shrubs), firewood, driveways and their associated culverts or bridges, and fences or retaining walls may be permitted or allowed in easements as long as they do not block the flow of storm drainage. Drainage from gutters, french drains, downspouts, swimming pools, retention walls, or other private systems directed to neighboring properties is a civil matter between the property owners. Moreover, owners that place obstructions, or fail to maintain property within public drainage easements (i.e. structures, sheds, buildings, curbs, retaining walls) may be subject to civil action from adjacent property owners and may be subject to a notice of violation as determined by the City.

While the City may propose or recommend possible solutions, the City cannot design or otherwise engineer improvements on private property. Additionally, the City can not recommend a particular contractor or undertake any work outside a dedicated city drainage easement. (CONT. pg. 2)

BOARD VOLUNTEERS NEEDED

The City is currently accepting applications for volunteers to serve on the following boards: Planning & Zoning Commission, Zoning Board of Adjustment, Parks & Recreation, Economic Development Corp. Board, Charter Review Committee, TIRZ Board and Property Maintenance Board of Appeals. Applications may be picked up at City Hall.



INSIDE THIS ISSUE

Stormwater Runoff	1
Flood Safety.....	2
Owner Responsibilities.....	2
Hurricane Preparedness.....	3
Smoke Testing.....	4
Shed Information.....	4
City Departments.....	4

IMPOTANT INFORMATION

July 4th Holiday

City Offices will be closed
Thursday July 4th

WAYS TO PAY YOUR UTILITY BILL

Online at cityofhitchcock.org
By Phone at (833) 282-0826

In Person at the City Hall at
7423 Hwy. 6

Drop Box located in the
parking lot of City Hall

Cash, Check, Money Order,
Credit Card

Continued from page 1:

HOW YOU CAN HELP

Keep easements and storm drains free of litter and debris. Do not rake, blow, or dump grass clippings or leaves into the storm drainage system. Keep the area easily accessible in case repairs or maintenance are necessary. Do not place sheds or other permanent structures in the easement or on top of drainage structures. Avoid obstructing the flow of stormwater with privacy fencing.

Apply pesticides and fertilizers in accordance with label instructions to minimize chemicals entering the stormwater system. Never dump pet waste, used motor oil, paint, chemicals, or other substances into a storm drain. Additionally, due to various chemicals existing in swimming pools, owners should never drain a swimming pool into storm drains without first treating the water to remove detrimental chemicals. These pollutants are often extremely difficult and costly to remediate or remove.

Report dumping or spilling of hazardous materials into a drainage system to the Fire Department by calling 911 in case of an emergency, or contact Candy Serna at 409-986-5559 or email at cserna@cityofhitchcockpd.com in a non-emergency situation.

PROPERTY AND HOMEOWNER RESPONSIBILITIES

- Keeping drainage ditches trimmed and clear of trash and debris.
- Keeping trees trimmed and maintaining at least a **14ft. clearance from the street to allow for passage of Emergency Vehicles and school busses.**
- Having the property address clearly posted and visible from the road.
- Prevent grease from going down household drains. This prevents buildups from blocking sewer lines.
- Keep pets inside fences and not allow them to roam freely in the area. Pick up after your pets when walking them.

FLOOD SAFETY

1. Do not walk through flowing water.

Drowning is the No. 1 cause of flood related deaths, mostly during times of rapidly rising water. Currents are deceptive; six inches of moving water can sweep you off your feet.

2. Do not drive through a flooded area.

More people drown in their cars than anywhere else. Vehicles also push water into homes and cause additional property damage. Do not drive around road barriers. **“Turn around, don’t drown!”**

3. Stay away from power lines and electrical wires.

The No. 2 cause of flood deaths after drowning is electrocution. Electrical current can travel through water. Report downed power lines to the power company. Have your electricity turned off by the power company.

4. Evacuate if needed.

If emergency officials tell you to evacuate or leave your home, go immediately to a safe shelter, hotel or relative’s house.

5. Look before you step.

After a flood, the ground and floors are covered with debris including broken bottles and nails. Floors and stairs that have been covered with mud can be quite slippery. Fence planks with nails can wash into your yard, driveway, or city street.

IMPORTANT USEFUL WEBSITES

www.fema.gov

www.usgs.gov

www.floods.org

www.tfma.org

www.weather.gov

www.floodsmart.gov



PREPARATION LIST FOR A HURRICANE SUPPLY KIT



EMERGENCY

- FLASHLIGHT
- EXTRA BATTERIES
- BATTERY OPERATED RADIO
- LANTERN
- CLOCK
- FANS
- CLOCK
- EXTRA BLANKETS
- TENT
- MATCHES
- HAND SANITIZER

PETS

- LEASH
- HARNESS
- WATER FOR 3 DAYS FOR EACH PET
- DRY PET FOOD
- SHOT RECORDS
- PET BED/BLANKET
- PET CARRIER/KENNEL

FIRST AID

- BAND-AIDS
- PEROXIDE
- BUG SPRAY
- SUNSCREEN
- FEMININE HYGIENE
- DRY SHAMPOO
- SOAP
- MATCHES
- PRESCRIPTIONS
- THERMOMETER
- CHILDREN'S TYLENOL
- ADULT TYLENOL
- FIRST AID KIT

MISCELLANEOUS

- TOILET PAPER
- GARBAGE BAGS
- ZIP-LOC BAGS
- UMBRELLA
- PONCHOS
- PHONE CHARGER
- FLARES
- CLEANING SUPPLIES

FOOD

- MANUAL CAN OPENER
- WATER FOR 3 DAYS FOR EACH PERSON
- FOOD ITEMS
 - CANNED FOOD
 - PEANUT BUTTER
 - CEREAL
 - PROTEIN BARS
 - CRACKERS
 - PACKAGED MEATS
- DISPOSABLE PLATES & UTENSILS
- NAPKINS

PAPERWORK

- ID
- SOCIAL SECURITY CARD
- PASSPORT
- WILLS
- INSURANCE PAPERS
- MEDICAL CARDS
- VACCINATIONS RECORDS
- BIRTH CERTIFICATES

- FILL UP GAS TANKS IN ALL VEHICLES
- FILL UP BATHTUBS WITH WATER
- TURN OFF SPRINKLERS AND WATER VALVES
- BOARD UP OR TAPE WINDOWS
- TAKE OUT CASH
- SECURE OUTDOOR ITEMS
- BRING IN TRASH
- TRIM TREE LIMBS

HURRICANE SEASON

JUNE 1- NOV. 30

Be Prepared!

Make an Evacuation Plan.

Find activated evacuation routes at DriveTexas.org or by dialing (800)452-9292.

Sign Up for Emergency Alerts

Make sure your device is enabled to receive Wireless Emergency Alerts (WEAs)

Prepare an Emergency Kit

Be sure to double check before a storm hits.

Review Your Insurance Policy

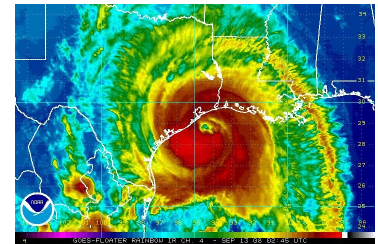
Make sure your home and car are properly covered.

Register with the State of Texas Emergency Assistance Registry (STEAR)

Register at STEAR.dps.texas.gov or by dialing 2-1-1 if you are disabled and are going to need assistance for evacuations.

OTHER ONLINE RESOURCES

- www.dps.texas.gov/dem
- www.texasprepares.org
- www.redcross.org
- www.ready.gov
- www.gov.texas.gov



HITCHCOCK EMERGENCY MANAGEMENT

The City of Hitchcock will be following the Emergency Management Plan established by the Galveston County Office of Emergency Management (GCOEM)

<https://gcoem.org/>

When tropical weather approaches the Upper Texas Gulf Coast, the GCOEM will alert the Chief of Police and will coordinate and conduct an initial meeting approximately 96 hours prior to 39mph winds reaching the coastline.

If the plan calls for evacuation, it will be done by using groups of zip code zones. Hitchcock is in "Zip Zone A"

PRIMARY EVACUATION ROUTES

- Interstate 45
- Highway 146
- Highway 6
- Highway 124

The State of Texas will provide wrecker assistance and comfort stations with emergency food, ice and fuel along I-45, U.S. 290, and Highway 59.

Galveston County has a contract with the City of Austin for shelter for individuals with access, functional and medical needs.

Unfortunately, due to budgetary and manpower constraints the City of Hitchcock will not be able to provide a shelter.

Pet Safety

Please remember to keep your pets secure and safe during the upcoming 4th of July Holiday. Fireworks can frighten our four legged friends and cause unhealthy levels of stress for them and their owners.

SMOKE TESTING

A sanitary sewer rehabilitation project will be taking place in specific areas of Hitchcock. This project will consist of two phases: Phase I – Smoke Testing and Evaluation, Phase II – Cleaning and Televising as needed, for point repairs or rehabilitation of manholes. After Phase I is complete, the engineer will provide the contractor with exhibits depicting the locations for necessary cleaning and televising, as well as, depict the locations and types of rehabilitations or repairs. The contractor will place notice on resident’s doors when work will start.

What is it? Smoke testing is the process of injecting artificially produced smoke into the sewer lines to locate leaks. If the sewer is in good condition then the forced smoke will only emerge from manhole lids and vents located on the roofs of homes and buildings. If the line has a defect, the smoke will emerge from the break or crack alerting the crew to the defect.

What to expect? During smoke testing, field crews force smoke into the sanitary sewer. The possibility exists for smoke to enter a residence due to infrequently used drains or defects in the sewer pipes. If the smoke does enter the home, smoke alarms may be activated. The smoke is not harmful to people, pets, plants, clothes, drapes or furniture. It does not stain and is not flammable.

MORE INFORMATION TO COME



SHEDS AND STORAGE BUILDINGS

When purchasing or building a shed, remember that a building permit is required. Please check with the permit department before a storage shed is moved onto or built on any property.

It is important that you understand all the codes and regulations that must be met in order to convert a shed to a residential living area.

For More Information visit the Municode website at

https://library.municode.com/tx/hitchcock/codes/code_of_ordinances

HOW TO CONTACT US

NAME	TITLE	CONTACT
RANDY STRICKLIND	MAYOR	rstricklind@cityofhitchcock.org
FARD K. ABDULLAH	CITY COMMISSIONER DISTRICT 1	district1@cityofhitchcock.org
CHRIS ARMACOST	CITY COMMISSIONER, DISTRICT 2	district2@cityofhitchcock.org
Wayne Newton	CITY COMMISSIONER, DISTRICT 3	district3@cityofhitchcock.org
MARK COOK	CITY COMMISSIONER, DISTRICT 4	district4@cityofhitchcock.org
MARIE GELLES	CITY ADMINISTRATOR	(409)986-5591
WILMON SMITH	CHIEF OF POLICE	(409)986-5559
LUCY DIERINGER	CITY SECRETARY	(409)986-5591
CAMELINA SERNA	CODE ENFORCEMENT OFFICER	(409)986-5591
D. JOE WOOD	COMMUNITY DEVELOPMENT	(409)316-7234
SABRINA SCHWERTNER	EXECUTIVE DIRECTOR OF ECONOMIC DEVELOPMENT	(409)795-1974
DARRELL HUNTER	INSPECTOR	(409)986-5591
JACOB COOLEY	MECHANIC	(409)986-5715
RUTH ANN SORRELL	MUNICIPAL COURT CLERK	(409)986-9702
ANDY JENKINS	STREET SUPERINTENDENT	(409)986-5591
JOEY DIERINGER	UTILITY SUPERVISOR	(409)986-5591
BILL GARVIN	WASTE WATER TREATMENT PLANT CHIEF OPERATOR	(409)986-5591
ANIMAL CONTROL		(409) 948-2485
MOSQUITO CONTROL		(281) 337-4289
24 HOUR UTILITY EMERGENCY		(409)986-5559
NON EMERGENCY POLICE		(409)986-5559