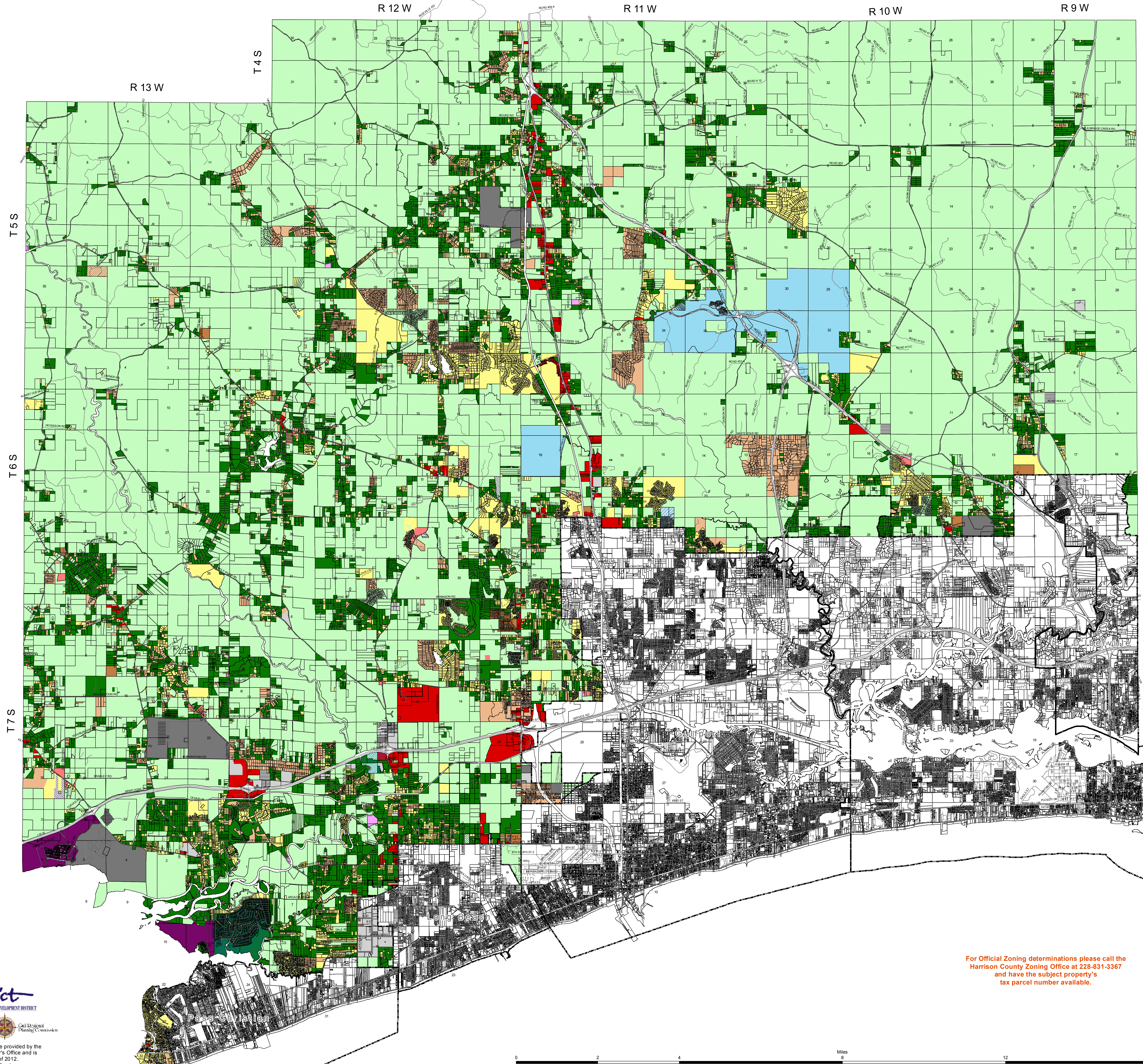


# Harrison County Zoning District Map As Amended Through June 31, 2016



- Special Overlay Districts**
- Airport District
  - PQQFU
  - PUD
  - Educational District
  - Recreational District
  - Waterfront District
  - Master Planned Community
- Zoning Districts**
- A-1 General Agriculture
  - E-1 Very Low Density Residential
  - R-1 Low Density Residential
  - R-2 Medium Density Residential
  - R-3 High Density Residential
  - O-1 Office
  - C-1 Neighborhood Commercial
  - C-2 General Commercial
  - C-3 Resort Commercial
  - I-1 Light Industry
  - I-2 General Industry

This is the Zoning Map of Harrison County, Mississippi as amended through June 31, 2016. This is NOT the "Official Zoning Map of Harrison County" as adopted by the Harrison County Board of Supervisors on June 1, 2004. However, this map reflects the most current changes to the Harrison County Zoning Map.



For Official Zoning determinations please call the Harrison County Zoning Office at 228-831-3367 and have the subject property's tax parcel number available.

