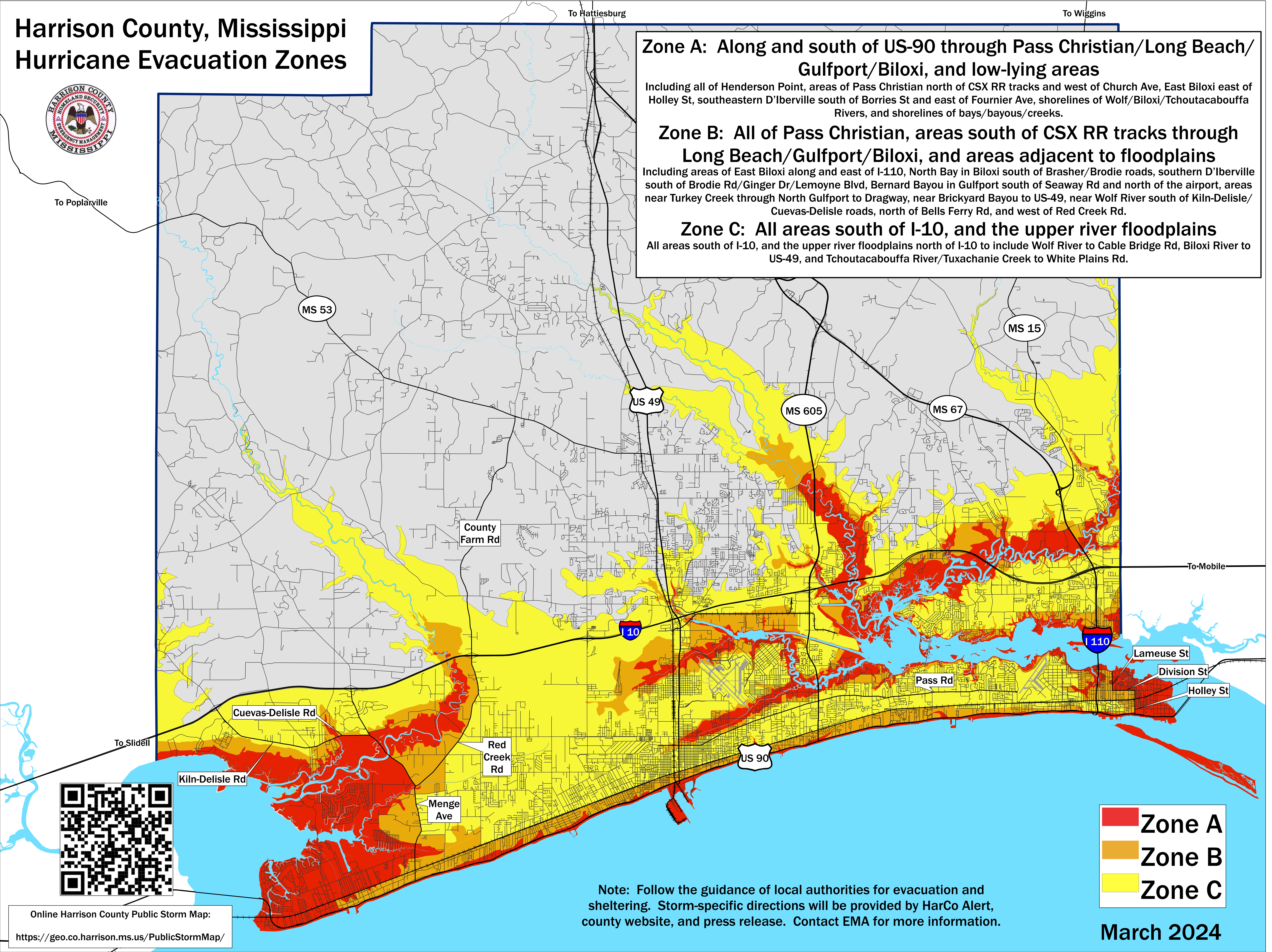


Harrison County, Mississippi Hurricane Evacuation Zones



Zone A: Along and south of US-90 through Pass Christian/Long Beach/ Gulfport/Biloxi, and low-lying areas

Including all of Henderson Point, areas of Pass Christian north of CSX RR tracks and west of Church Ave, East Biloxi east of Holley St, southeastern D'Iberville south of Borries St and east of Fournier Ave, shorelines of Wolf/Biloxi/Tchoutacabouffa Rivers, and shorelines of bays/bayous/creeks.

Zone B: All of Pass Christian, areas south of CSX RR tracks through Long Beach/Gulfport/Biloxi, and areas adjacent to floodplains

Including areas of East Biloxi along and east of I-110, North Bay in Biloxi south of Brasher/Brodie roads, southern D'Iberville south of Brodie Rd/Ginger Dr/Lemoyne Blvd, Bernard Bayou in Gulfport south of Seaway Rd and north of the airport, areas near Turkey Creek through North Gulfport to Dragway, near Brickyard Bayou to US-49, near Wolf River south of Kiln-Delisle/Cuevas-Delisle roads, north of Bells Ferry Rd, and west of Red Creek Rd.

Zone C: All areas south of I-10, and the upper river floodplains

All areas south of I-10, and the upper river floodplains north of I-10 to include Wolf River to Cable Bridge Rd, Biloxi River to US-49, and Tchoutacabouffa River/Tuxachanie Creek to White Plains Rd.

- Zone A
- Zone B
- Zone C

Note: Follow the guidance of local authorities for evacuation and sheltering. Storm-specific directions will be provided by HarCo Alert, county website, and press release. Contact EMA for more information.

March 2024

Online Harrison County Public Storm Map:

<https://geo.co.harrison.ms.us/PublicStormMap/>