



September 23, 2022

Steve Cabral, PhD, PE
Crossman Engineering
151 Centerville Avenue
Warwick, RI 02886

RECEIVED

DEC 02 2022

Planning Department
Town of Groton, CT

RE: Parcel ID 3100-1267-1142 | 421 Route 12, Groton, Connecticut

Dear Dr. Cabral,

On September 22, 2022, Avizinis Environmental Services, Inc., (AES) staff visited the above referenced property in Groton, Connecticut to review the wetland resources on the lot, specifically to assess whether any regulated freshwater wetlands exist on the property that would interfere with any proposed development of the property.

The State of Connecticut regulates wetlands and watercourses of the state via the 1972 Inland Wetlands and Watercourses Act (Sections 22a-36 to 22a-45, inclusive, of the Connecticut General Statutes). The regulatory authority to uphold the provisions of the act is carried out by the towns therein. The Town of Groton subsequently promulgated the latest version of the town regulations, the Inland Wetlands and Watercourses Regulations (last amended July 1, 2011).

There are no wetlands present on the property or within close proximity to the property that would incur any jurisdictional setback onto the property.

Please do not hesitate to contact us with any questions.

Sincerely,

A handwritten signature in blue ink, appearing to read "Edward Avizinis", written over a horizontal line.

Edward Avizinis, CPSS, PWS | President





2020 AERIAL MAP
 421 Route 12
 Groton, Connecticut

LEGEND
 PROPERTY LINE



General Notes:
 1. This map should not be interpreted as a survey quality graphic. It is designed for preliminary planning purposes only. AES recommends consultation with a Professional Land Surveyor for accurate site feature locations.
 2. Property lines as depicted on this map have been approximated from plat maps available from the town assessor's online database.
 3. Aerial photograph base map and other data layers acquired from the CT DEEP and CTGIS database.

Map created by:

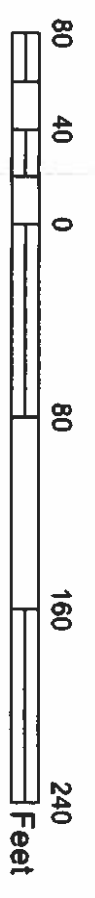
 Patrick J. Evelyand, GIS Specialist 08/31/2022



USDA - NRCS SOIL SURVEY MAP
 421 Route 12
 Groton, Connecticut

LEGEND

- 29B - Agawam fine sandy loam, 3 to 8 percent slopes
- 32B - Haven and Enfield soils, 3 to 8 percent slopes
- 66B - Narragansett silt loam, 2 to 8 percent slopes
- 306 - Udorhents-Urban land complex



General Notes:
 1. This map should not be interpreted as a survey quality graphic. It is designed for preliminary planning purposes only. AES recommends consultation with a Professional Land Surveyor for accurate site feature locations.
 2. Property lines as depicted on this map have been approximated from plat maps available from the town assessor's online database.
 3. Aerial photograph base map and other data layers acquired from the CT DEEP and CTGIS database.

Map created by:

 Patrick J. Loveland, GIS Specialist





USGS TOPOGRAPHIC MAP
 421 Route 12
 Groton, Connecticut

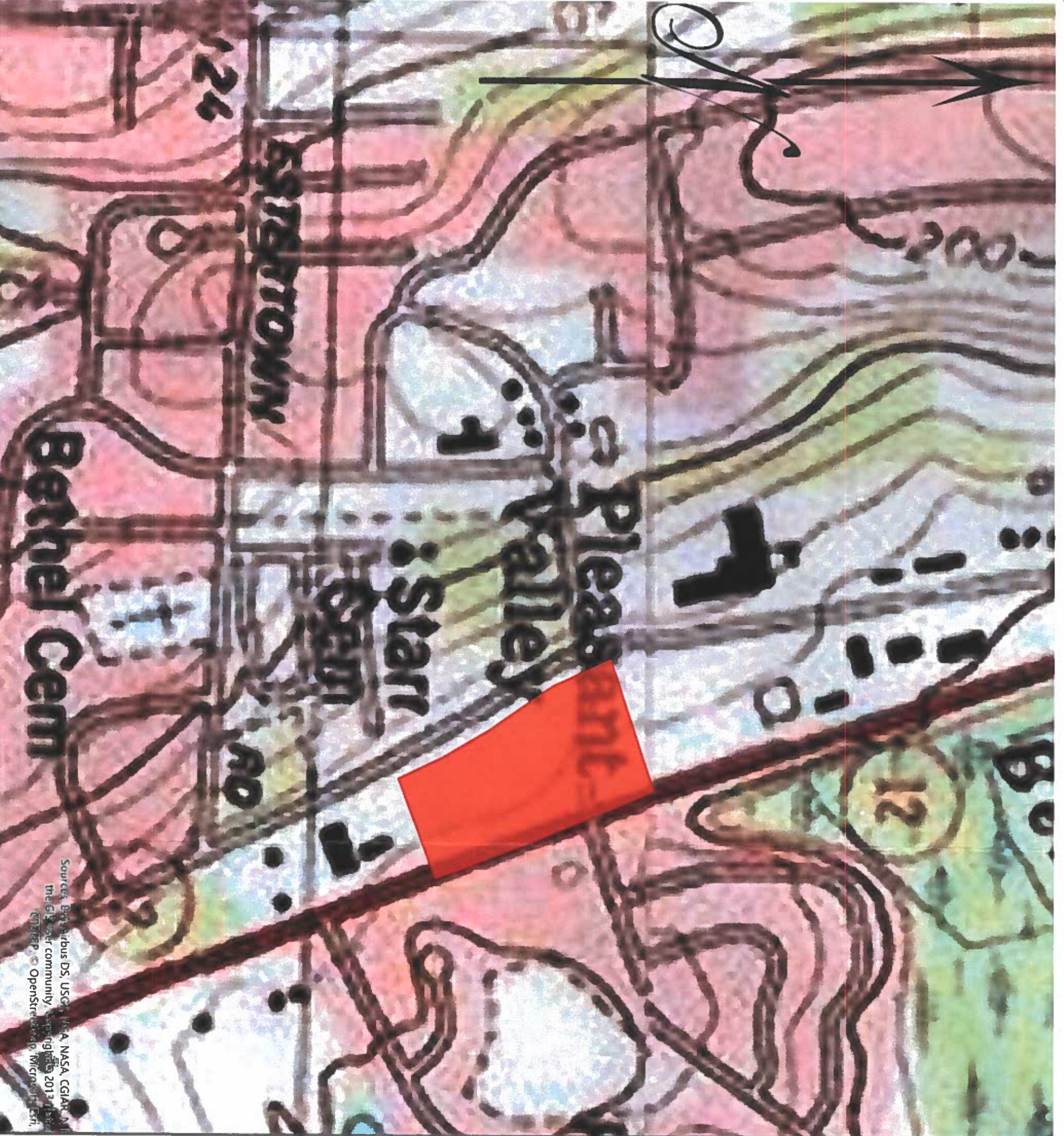
LEGEND
 PROPERTY LINE



General Notes:
 1. This map should not be interpreted as a survey quality graphic. It is designed for preliminary planning purposes only. ALES recommends consultation with a Professional Land Surveyor for accurate site feature locations.
 2. Property lines as depicted on this map have been approximated from plat maps available from the town assessor's online database.
 3. Aerial photograph base map and other data layers acquired from the CT DEEP and CTGIS database.

Map created by:

 Patrick J. Loveland, GIS Specialist



Source: Esri, DeLorme, USGS, NASA, GNIS, NPS, the GIS user community, Swisstopo, IGN, etc. © 2013 Microsoft, CNR, etc. © OpenStreetMap contributors, Microware, etc.