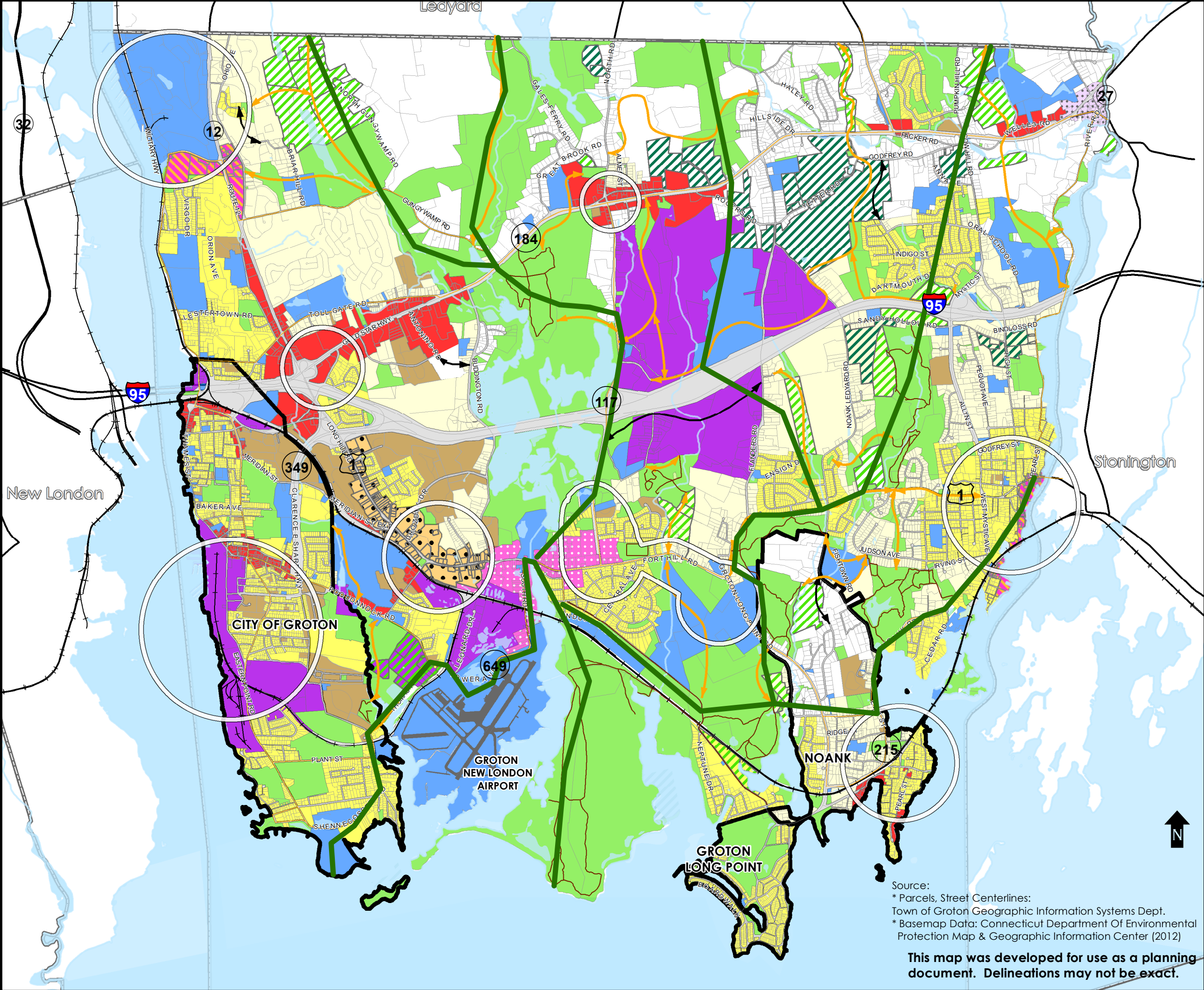


Future Land Use

- Residential**
 - Rural Residential
 - Low Density Residential
 - Medium Density Residential
 - High Density Residential
- Open Space & Agriculture**
 - Existing Open Space and Parks
 - Desirable Open Space, Parks, and Connections
 - Desirable Agriculture
- Business**
 - General Commercial
 - Industrial
 - Design Districts
- Other Uses**
 - Government Facilities, Institutional, and Infrastructure
 - Nodes
- Special Focus Areas**

Downtowns
 - Downtown Groton

Villages
 - Old Mystic
 - Poquonnock Bridge
- Connectivity**
 - Proposed Greenways
 - Existing Trails or Bikeways
 - Proposed Trails or Bikeways
 - Proposed Vehicular Transportation Connections
 - Airport
 - Town and Jurisdictional Boundary



Source:
* Parcels, Street Centerlines:
Town of Groton Geographic Information Systems Dept.
* Basemap Data: Connecticut Department Of Environmental
Protection Map & Geographic Information Center (2012)

This map was developed for use as a planning
document. Delineations may not be exact.