



VIA E-Mail

April 8, 2014

Significant Environmental Hazard Program
Remediation Division Bureau of Water Protection and Land Reuse
Department of Environmental Protection
79 Elm Street
Hartford, Connecticut 06101 - 5127

**RE: Significant Environmental Hazards Abatement
Former Mystic Oral School for the Deaf
Groton, Connecticut**

Loureiro Engineering Associates Inc. (LEA), on behalf of the State of Connecticut Department of Economic and Community Development (CT DECD), has prepared this letter of notification for the completion of actions taken to abate a significant environmental hazard detected in soil at the Mystic Oral School for the Deaf (hereinafter referred to as the "Site") located at 0 Oral School Road, Groton, Connecticut, as shown on Figure 1.

On January 10, 2013, LEA submitted a notification of significant environmental hazard form in accordance with Connecticut General Statutes (CGS) 22a-6u in regards to the levels of pesticides detected in the upper six inches of soil at locations SS-300 and SS-319 along the perimeter of the Crouter building. Please see figure 2 for details. The soil samples contained concentrations of pesticides above 30 times the applicable direct exposure criteria.

Actions taken to abate the hazards were completed on April 7, 2014, when temporary fencing was installed to create non-accessible areas measuring 6 feet tall by 4 feet wide by 8 feet long. The locations where the significant environmental hazards were detected serve as the center point for both of the enclosed areas. The fencing at both areas was installed immediately adjacent to the Crouter building, and in both areas, the fence posts were installed no more than two inches away from the building exterior. Pictures of the fencing surrounding SS-300 and SS-319 are provided in attachment 1 and 2, respectively.

These temporary abatement measures will serve only until permanent hazard abatement can be completed, which is expected during the remediation of the site.

Should you have any questions or comments, please do not hesitate to contact me at 860-410-2956.

Sincerely,

LOUREIRO ENGINEERING ASSOCIATES, INC.

Loureiro Engineering Associates, Inc.

100 Northwest Drive • Plainville, CT 06062 • 860.747.6181 • Fax 860.747.8822 • www.Loureiro.com

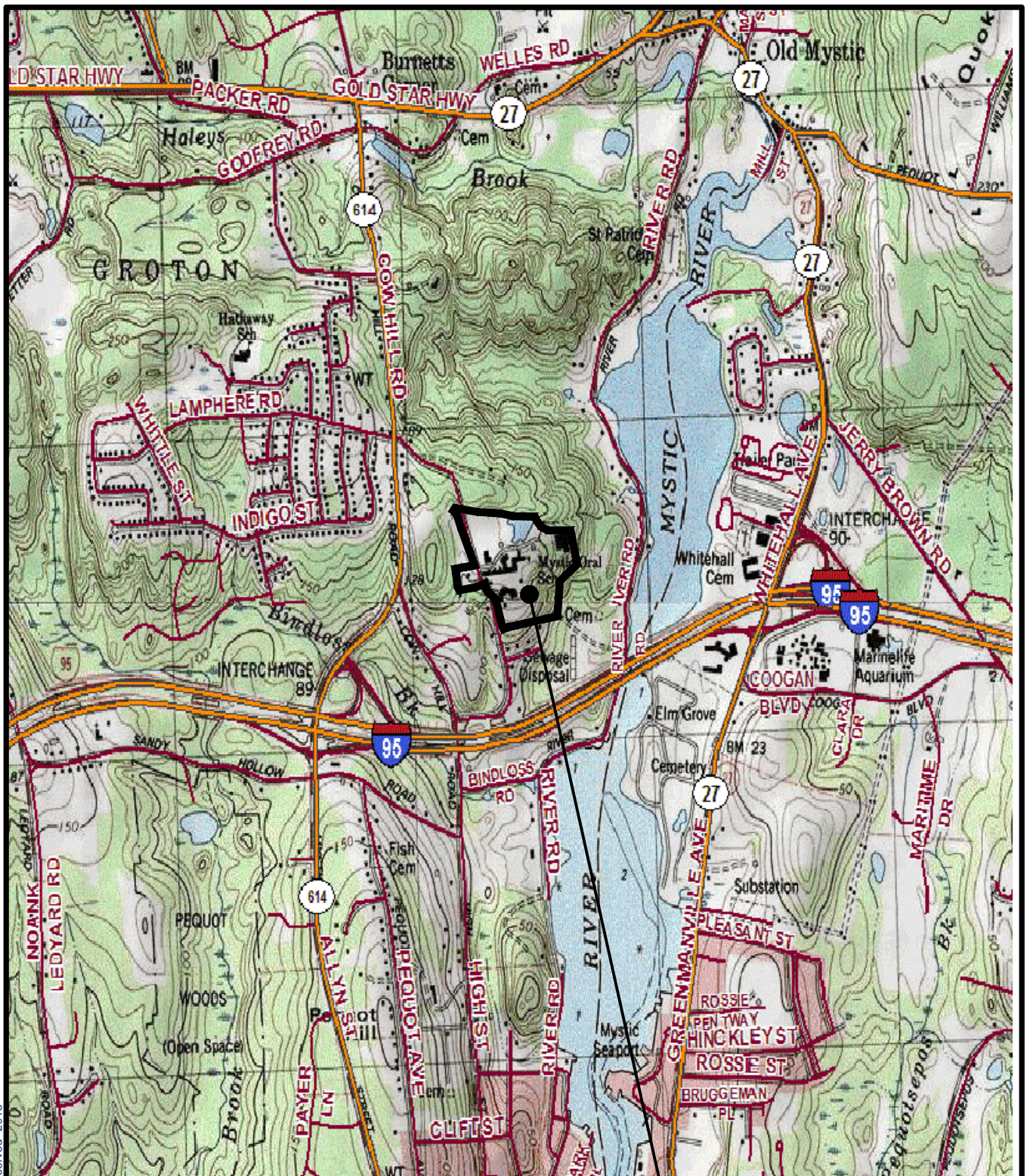
AN EMPLOYEE-OWNED COMPANY



Darby W. Hittle, L.E.P.
Senior Project Manager

Attachments

cc: Don Friday - Environmental Analyst - Office of Brownfield Remediation - DECD



APPROXIMATE SCALE IN FEET
MAP REFERENCE:

SECTION OF THE USGS 7.5 MINUTE SERIES TOPOGRAPHIC MAP FOR OLD MYSTIC & MYSTIC, CT, DATED 1983, 1984 & PHOTOREVISED 1989 & 1996. MAP CREATED WITH TOPO! © 2008 NATIONAL GEOGRAPHIC & © 2007 TELE ATLAS, NORTH AMERICA, INC., RELEASE 01/2007.



SITE LOCATION

Significant Environmental Hazard Report
Former Mystic Oral School

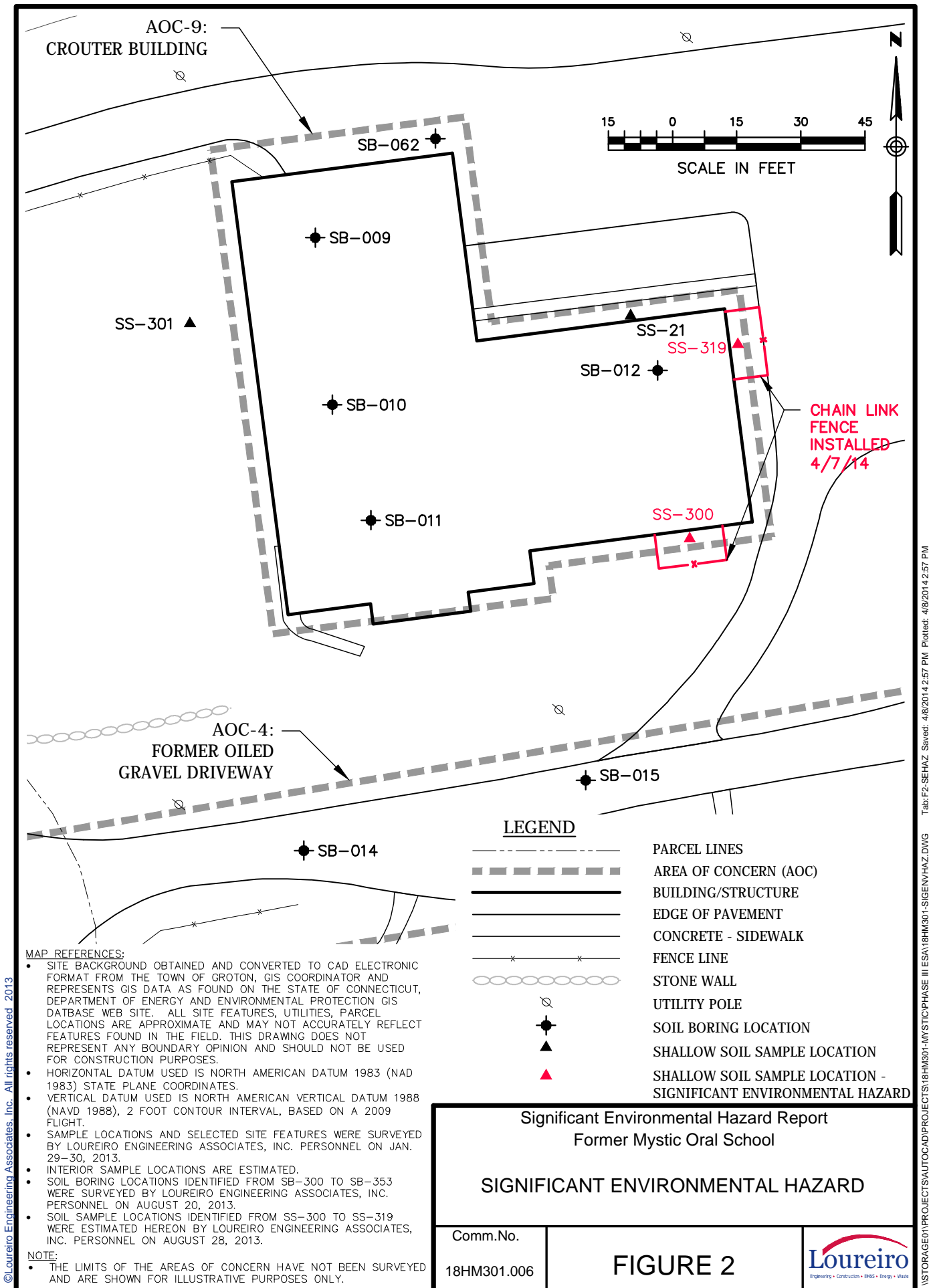
SITE LOCATION MAP

Comm.No.

18HM3.01

FIGURE 1





Attachment 1

Pictures of Fence Installation Surrounding
Sample Location SS-300



Attachment 2

Pictures of Fence Installation Surrounding
Sample Location SS-319

