

THE GRISWOLD  
EASTERN POINT  
NEW LONDON, CONN.





The Finest Summer Resort Hotel in America.



THE GRISWOLD,  
EASTERN POINT,  
NEW LONDON, CONNECTICUT.

H. D. SAXTON, Manager





**E**ASTERN POINT is located on the east bank of the famous Thames River, overlooking Long Island Sound, "The Yachting Playground of America." With its location it combines all the desirable features of a summer resort.

The Griswold boasts of its unsurpassed service and cuisine, splendid appointments,—no expense being spared in making it modern and up-to-date in the most minute detail. All rooms are furnished in mahogany, lighted by electricity, and have long distance telephone. A la carte service in our new grill room.

Morning concert on piazza by our celebrated orchestra; dancing every evening; sacred concert on Sundays.

Guests are invited to visit our farms, "The Branford Farms," which supply the hotel with all milk, cream, poultry and vegetables, assuring our patrons the best the market affords.

The Shenecossett Country Club, which adjoins the hotel grounds, extends its privileges to our patrons. It has one of the finest 18-hole courses in New England, constructed under the direction of Donald J. Ross, golf architect. Alex. Smith, professional, will be in charge of the club.

Automobile tourists may reach The Griswold via the "New York and Boston Shore Route." The famous State roads on this route and in the vicinity are unsurpassed. Modern garage facilities.

There are four excellent tennis courts for the use of guests. At the beach will be found bath houses for those desiring to enjoy the unexcelled bathing in the waters of Long Island Sound.



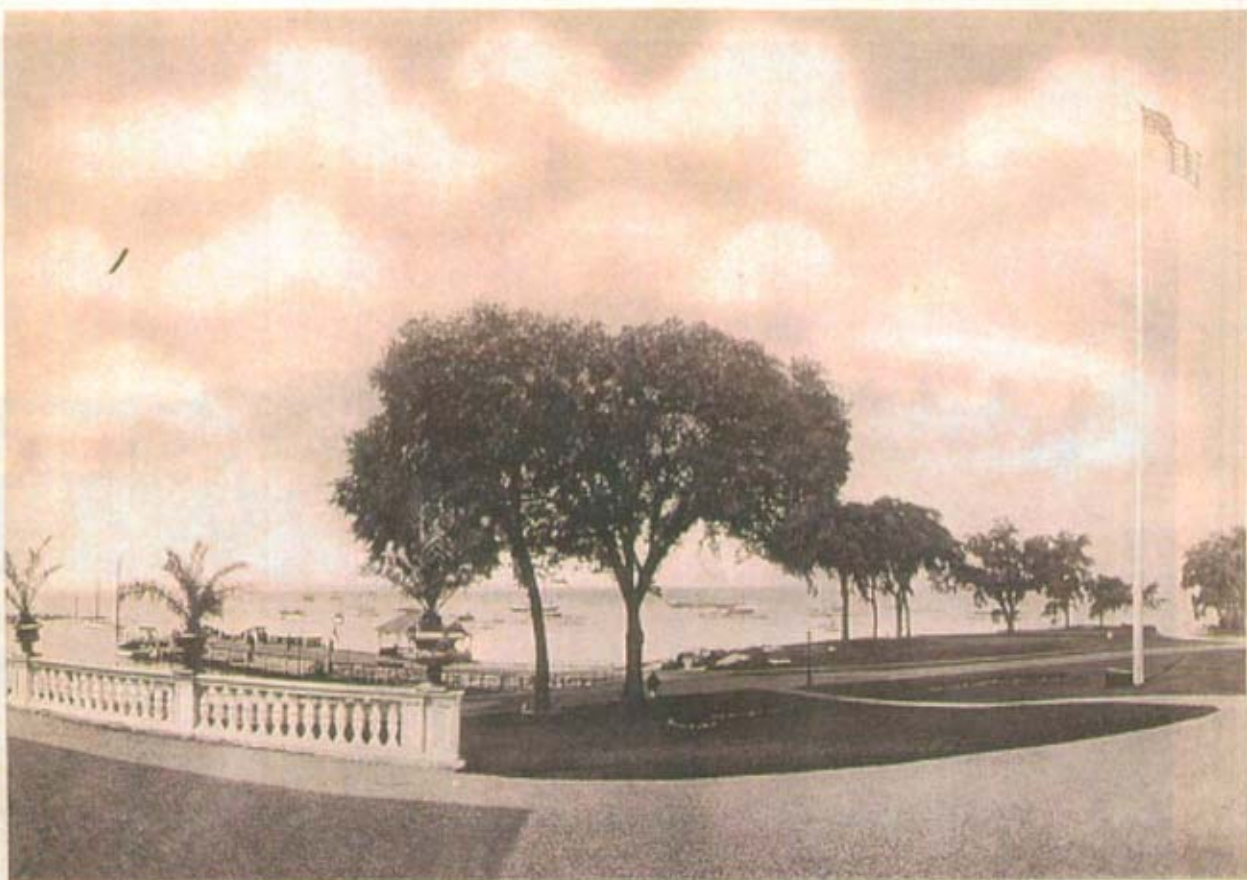


ALONG THE SHORE.

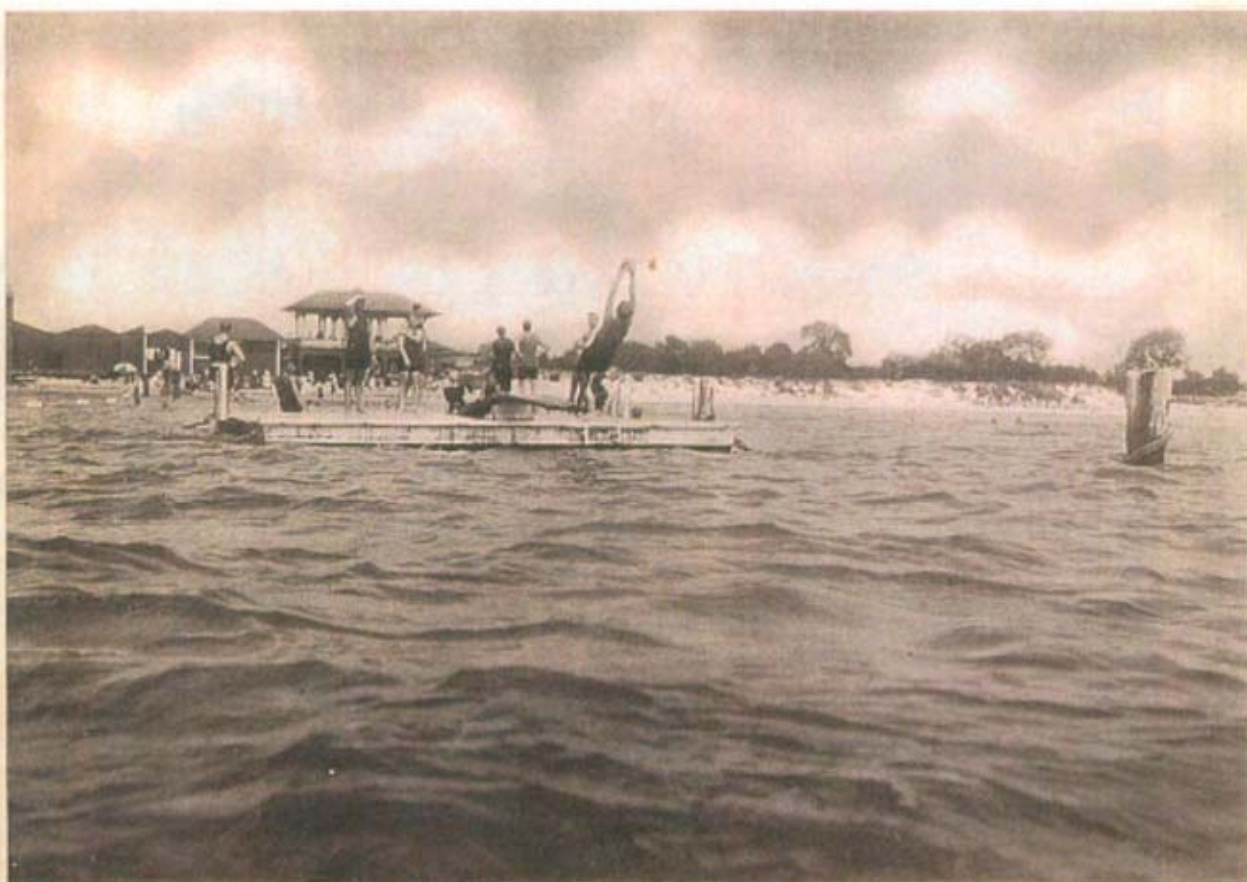


COURT YARD.



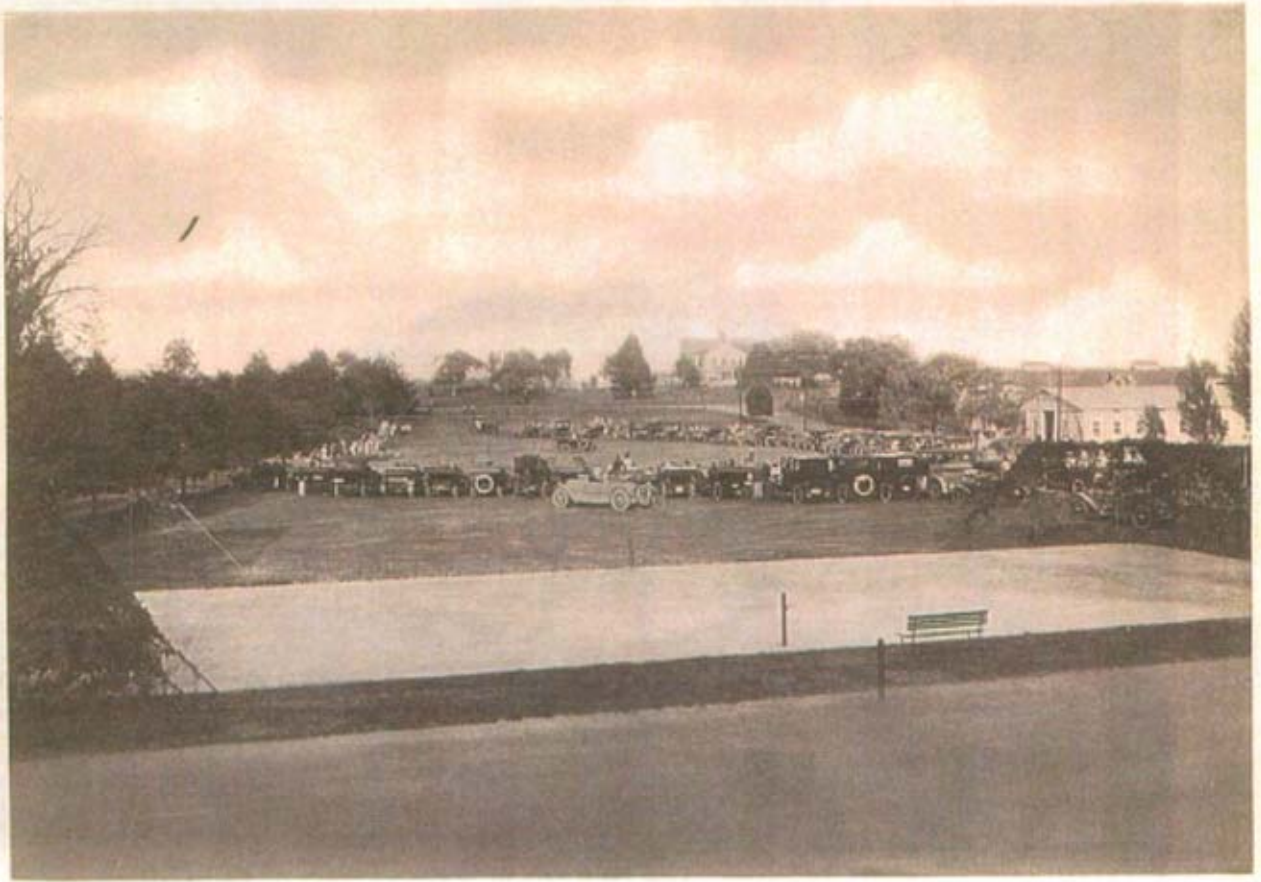


VIEW FROM MAIN ENTRANCE.



DIVING FROM THE RAFT.





FIELD DAY.

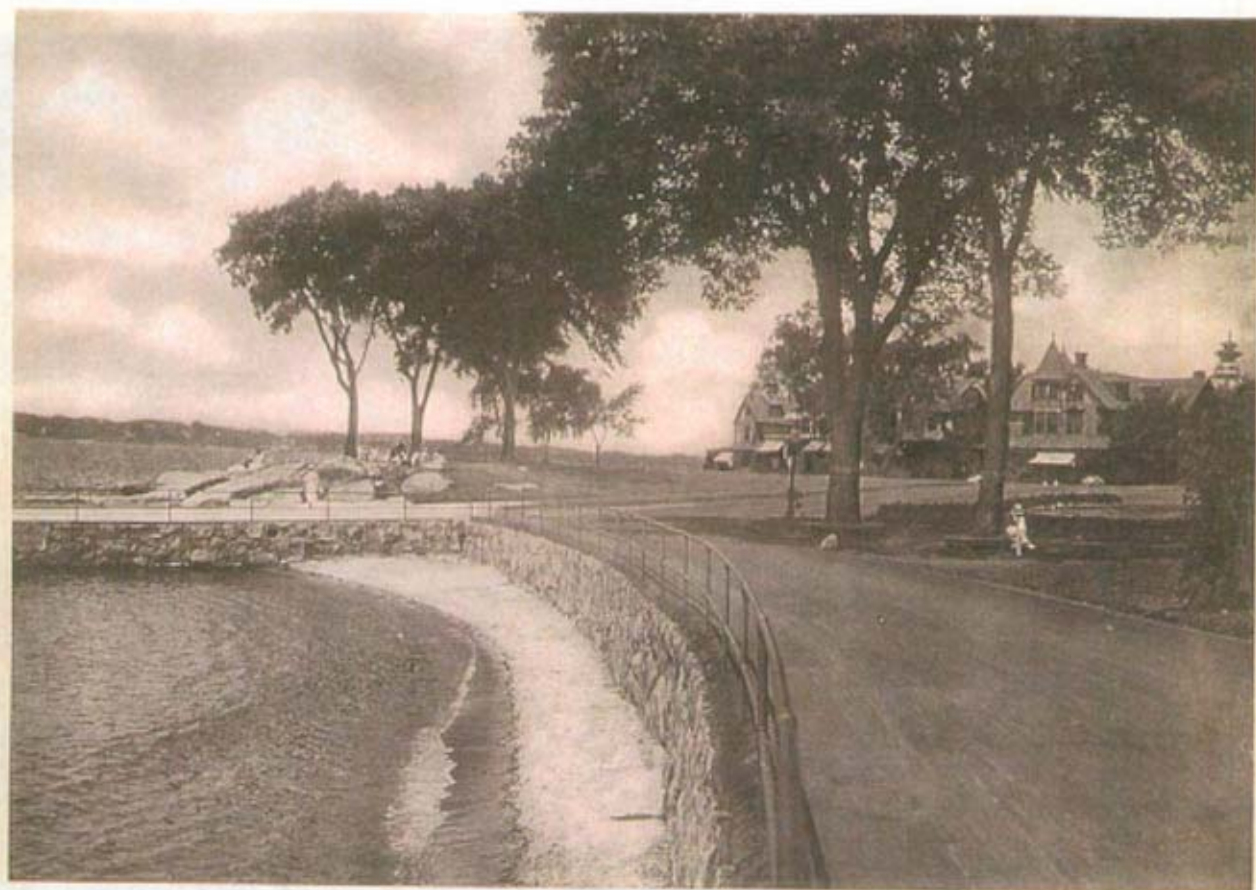


SHORE DRIVE.





DEPARTURE OF NEW YORK YACHT CLUB FLEET.



SHORE AVENUE.





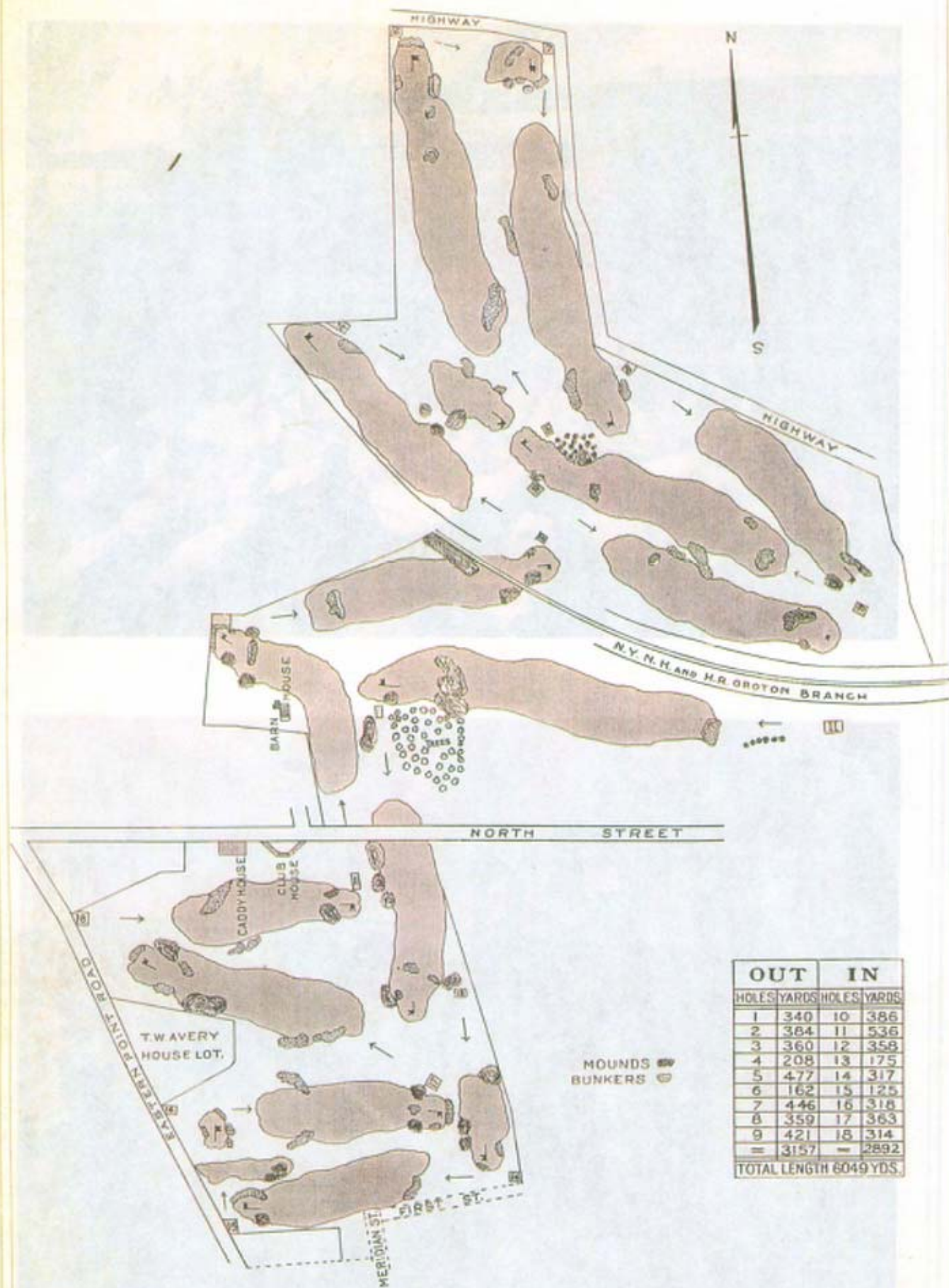
VIEWS FROM BRANFORD FARMS.





VIEWS FROM BRANFORD FARMS.





THE SHENECOSSETT COUNTRY CLUB





DRIVING FROM FIRST TEE.

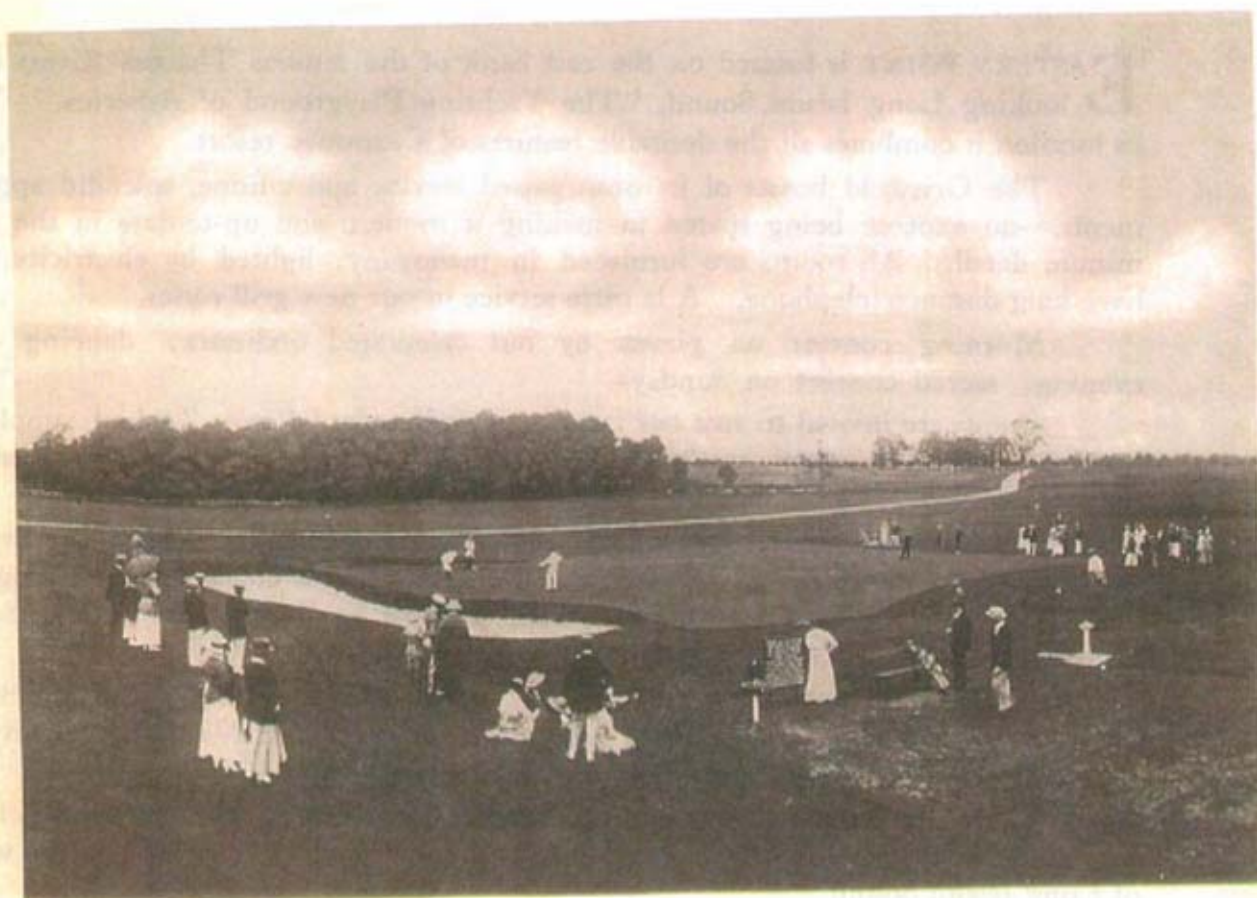


NUMBER TWO GREEN.





FOURTH GREEN.



ELEVENTH GREEN.



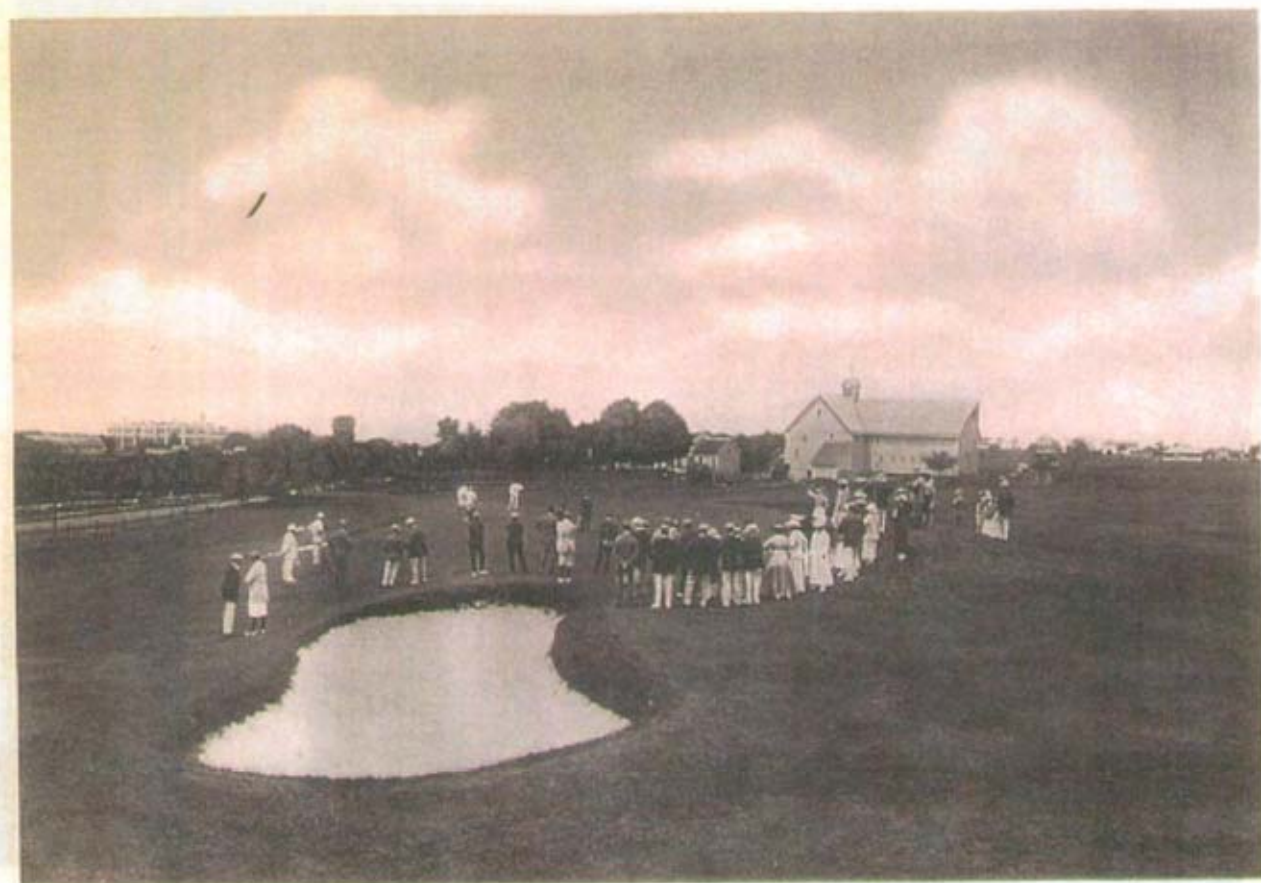


NINTH GREEN.



TWELTH TEE





FIFTEENTH GREEN.

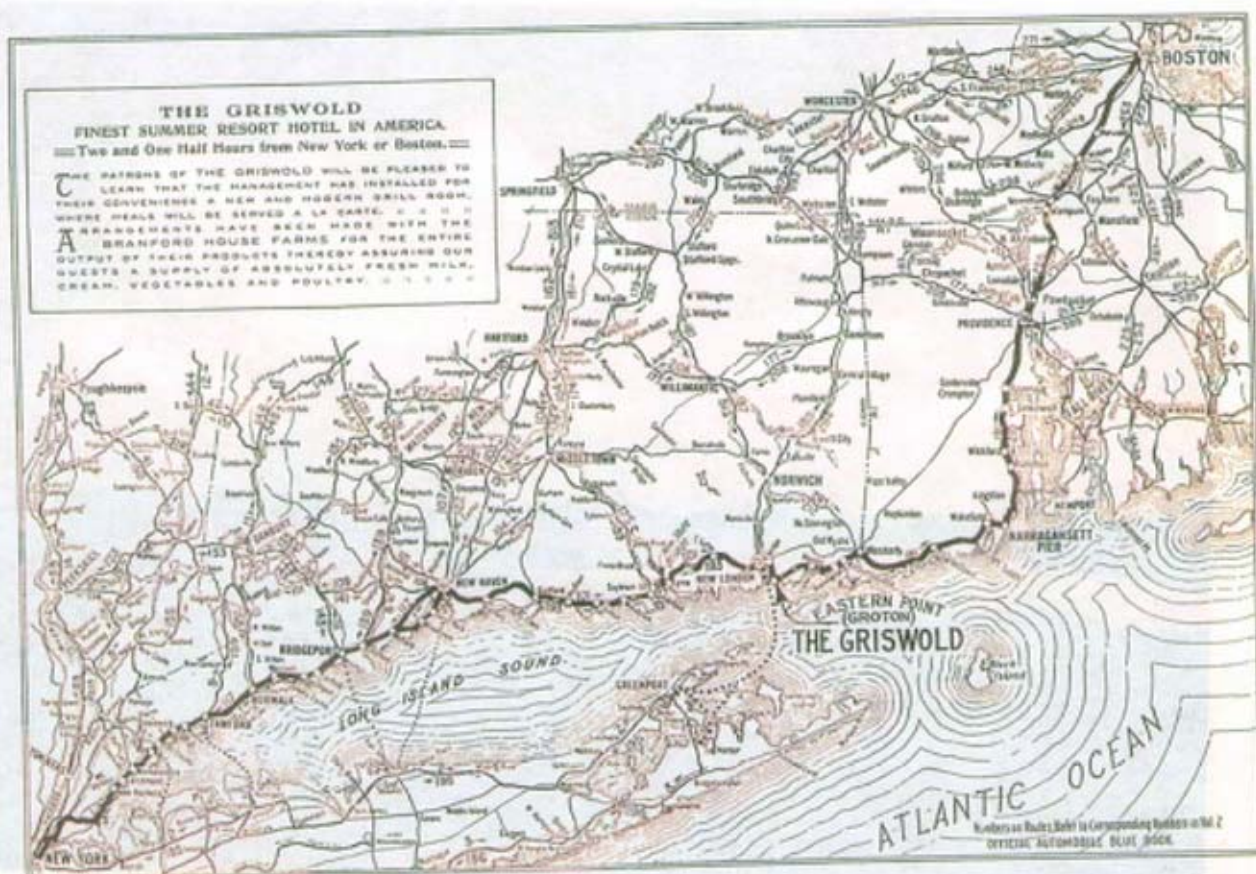


FOURTEENTH GREEN.





THE SHENECOSSETT COUNTRY CLUB HOUSE.







**R**ESIDENT PHYSICIAN, news stand, drug store, barber shop, manicure and hair dressing parlor and valet service in connection with hotel.

Western Union Telegraph Office in the hotel.

Our power boats, "Griswold" and "Bellevue," meet all principal trains at New London depot, affording the guests a delightful fifteen minutes' sail down the beautiful Thames River direct to hotel dock.

New London is only two and one-half hours from New York or Boston via N. Y., N. H. & H. R. R. Through cars from Philadelphia, Baltimore and Washington via Pennsylvania Railroad. Worcester and intermediate points without change via Norwich & Worcester Railroad. Montreal and the West via Grand Trunk and Central Vermont Railroads.

Early reservations should be made.

Room plans and full information upon request.

ADDRESS

H. D. SAXTON,

THE GRISWOLD, Eastern Point, New London, Conn.

Until June 5th, Room 1402, 305 Fifth Avenue, New York.

Telephone—Madison Square, 9957.

Open from June 9th to September 15th.





THE BELLEVUE, BELLEAIR, FLORIDA.

W. D. SEXTON, Manager.



Printed by the  
W. D. SEXTON, Manager.  
Belleair, Florida.