

matter is being discussed nothing definite has been settled. The Woodland Golf Club at Auburndale has a course of nine holes, can obtain a long lease of adjacent land, and make a first-class eighteen-hole course. The Brae Burn Golf Club has the best nine-hole course in the State, and its property runs to within a few hundred yards of the Woodland Club's course."



The plan of the Woodland people was to combine with the Brae Burn Club and have an eighteen-hole course, with a subsidiary nine holes for beginners and the less expert. The Brae Burn Club, however, intends eventually to extend its course to eighteen holes, and there is some possibility of the Newton Centre and the Newton Golf clubs, both of which now maintain nine-hole courses, joining membership with the Brae Burn Club and enjoying the extended course. The Brae Burn Club wishes to retain its in-

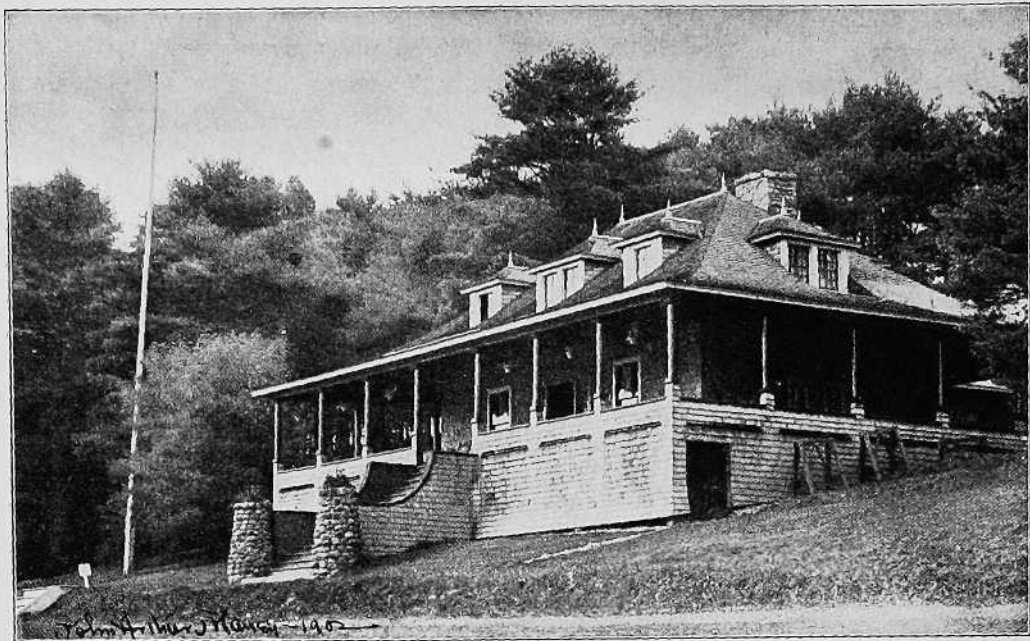
dividuality at all costs. It is a more expensive club than the Woodland Club, and will eventually be a country club, open all the year round, and with a programme of winter sports. In Newton there are three small clubs besides those mentioned, which may join membership with the Woodland Club and help to maintain a second first-class eighteen-hole course. Newton has more than 1000 golfers, and could easily support two eighteen-hole courses. The Woodland Club has only to have a first-class golf-course at a moderate fee to get all the members it wishes, as the expense of golf is a serious matter to many who are devoted to the game.



The Shennecossett Golf Club was organized as far back as 1898, and has had a prosperous career from the start. It is situated three miles from the New London (Connecticut) railroad station, and has a nine-hole course, of which the



CLUB-HOUSE, SHENNECOSSETT (GROTON, CONNECTICUT) GOLF CLUB.



CLUB-HOUSE OF THE ANTLERS CLUB, AMSTERDAM, NEW YORK.

distances are 273, 275, 202, 195, 207, 158, 203, 183, 190. The dues are \$25.



The Antlers Club is at Amsterdam, New York, and as it is situated close to the city and easily accessible by the street railroad, it is no wonder that it is popular. It was organized in 1900, and now has a membership of nearly 300. The distances of the nine-hole course are 300, 205, 250, 270, 375, 182, 255, 280, 245.



The annual meeting of the New Jersey State Golf Association was held January 22, and unusual interest attached to the proceedings on account of the proposed new handicap scheme for rating players. Briefly, the proposal was that the club should adopt as a basis for their handicapping the par score of their links. The committee considered that the present system whereby club handicaps are based as the bogey of the course, or the play of some scratch

player is inaccurate and inadvisable, because bogey is altogether too elastic.



The committee recommended the adoption of the par system, which is based entirely on the playing length of the hole, and in using the par score the association is to make use of the following standard par:

Distance up to 200 yards.....	3
Distance from 201 yards to 250 yards...	3½
Distance from 251 yards to 375 yards...	4
Distance from 376 yards to 425 yards...	4½
Distance from 426 yards to 510 yards...	5
Distance from 511 yards to 600 yards...	5½
Distance from 601 yards to 650 yards...	6



The recommendation of the executive committee was unanimously carried. Lionel H. Graham was re-elected president of the association, and at a later date he appointed the following committee: R. Bage Kerr, Lakewood; Paul Wilcox, Montclair; Percy Jackson, Yountakah; E. N. Tod, Neward; secretary and treasurer, T. T. Reid, Montclair; handi-