

FINDING SEWER CONNECTION DATA

If you are planning any kind of excavation, **ALWAYS** Call Before You Dig. It's the **LAW**.

<https://www.cbyd.com/>



On the Groton GIS Interactive Mapping [webpage](#), select the "GIS Viewer" [app](#).



GIS Viewer

This core GIS application can be viewed in any desktop browser or mobile device. Users are able to access assessment information, deeds, property cards, and pictures. Several data sets are available for overlay including: utilities, parcel annotation, districts, such as Fire and Zoning, and environmental data. Users can also toggle between several years' worth of orthophotography and different themed basemaps, as well as produce high quality GIS maps, and perform spatial operations like buffer notifications. The values shown are based on the findings during the 2021 Town Wide Revaluation, and the land & building characteristics are based on the findings for the 2021 Grand List.

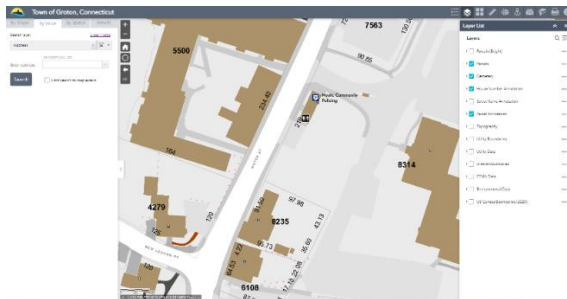
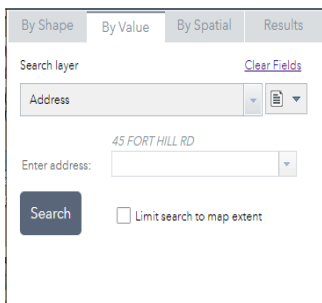
If it's your first visit to the site, you'll be greeted with a disclaimer prompt; please take a moment to read and understand the terms of use. If you agree, click the box to the left of "I have read and agree to the website terms and conditions". Then click the "I Agree" button to proceed.

Disclaimer:

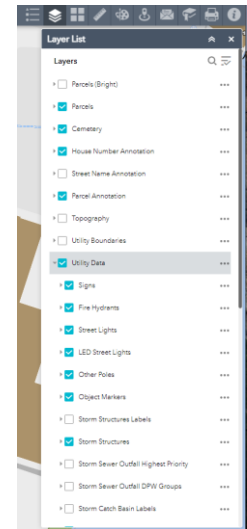
The Planimetric and Topographic information depicted on this site was compiled by Fugro and is based on an aerial flight that was performed in April 2020. The Horizontal Datum is based on North American Datum of 1983 (NAD 83 feet) and the Vertical Datum is based on National Geodetic Vertical Datum of 1988 (NGVD 88). Property information has been derived from recorded deeds, plats, public records, and other data. The intent of this information is to provide the user with a graphical representation of real property, planimetric, topographic and other digital information for the Town of Groton. The user should not rely on the data provided herein for any reason. The map and database information is believed to be accurate but accuracy is not guaranteed, and the information contained in this website is NOT under any circumstance to be construed or used as a legal description. Any errors or omissions should be reported to the Town of Groton GIS Department, IT_HelpDesk@groton-ct.gov. In no event will the Town of Groton be liable for any damages, including loss of data, lost profits, business interruption, loss of business information or other pecuniary loss that might arise from the use of this mapping service or the information it contains.

I have read and agree to the website terms and conditions

Navigate to your property of interest using the search mechanism at the left side of the app, and pan and zoom to the area in the map.

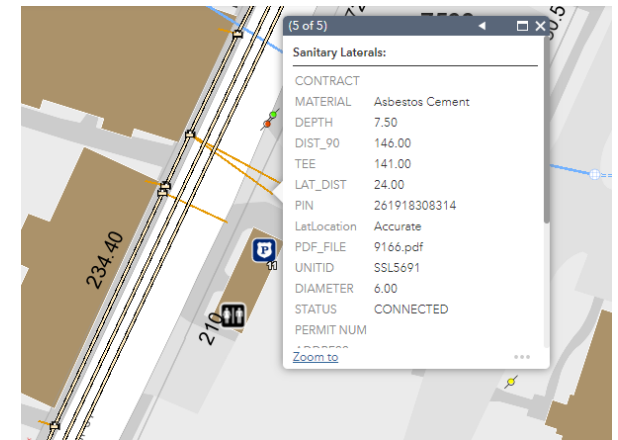


In the row of icons at the top righthand corner of the app, click the Layer List widget. Hovering the mouse over this or any of the icons will reveal a description of the widget's function.




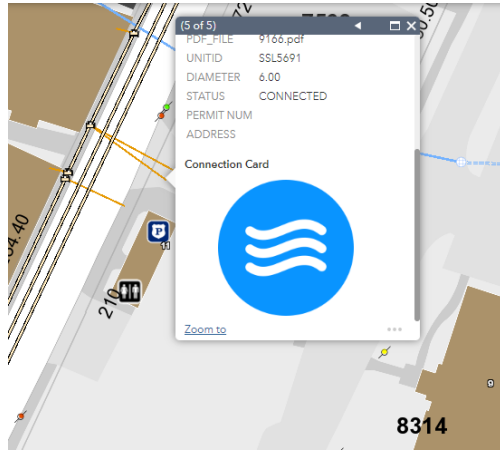
Scroll down the resulting list and turn on the Utility Data group layer. You can dig deeper into the layer list by clicking the small caret to the left of "Utility Data" to reveal and turn on/off individual layers, but sanitary sewer features will be turned on by default. All sewer data will now appear on the map including, mains, laterals, tees, manhole covers among other features. These represent a **SCHEMATIC** only and feature locations should NOT be considered survey accurate. Information about each map symbol can be found in the Legend widget.


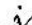
Click any of the sewer laterals for information about the system connection to the property. The resulting popup will show connection status along with several other attributes. This data is kept as up to date as possible, but is not guaranteed. If you click a location where multiple features are located (such as both a lateral and a parcel) a "(1 of X)" will appear in the gray bar at the top of the popup; use the left and right arrows (also located in the gray bar) to cycle through the different features until you reach the one you're looking for.

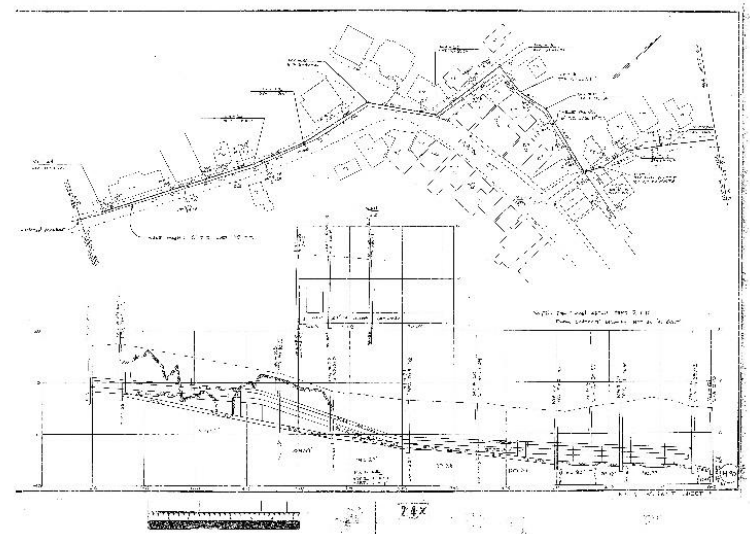
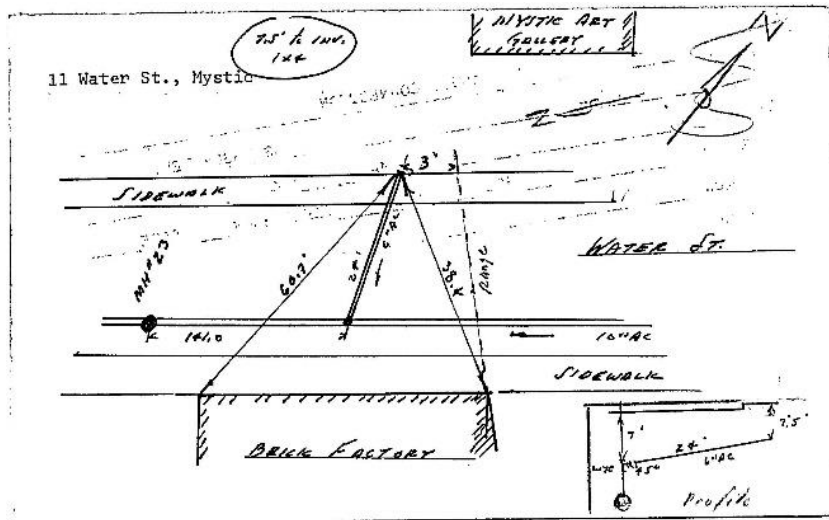
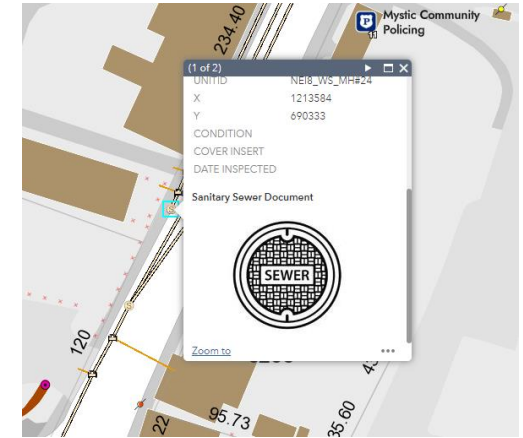


FINDING SEWER CONNECTION DATA

Additional data can be found by clicking on the connection card icon  at the bottom of the popup. This will usually provide some measurements that can help better pinpoint the location and orientation of sewer features.



Clicking any of the manhole covers  will reveal information about the wider network at large. Click the "Sanitary Sewer Document" icon  at the bottom of the popup to find additional drawings of the network in that vicinity.



Questions about the GIS site can be directed to IT_HelpDesk@groton-ct.gov
 Questions about utility data can be directed to pworks@groton-ct.gov