

SEWER HOOK-UPS ON PRESSURIZED SEWER MAINS

All sewer hook-ups on pressurized sewer mains will require grinder pump set-ups as described below:

Grinder pumps for the individual homeowner shall be a turnkey package system containing a grinder pump, a tank and alarm panel with audible and visual alarms. The grinder pump package systems for residential homes shall be designed to store a minimum of seventy (70) gallons of wastewater below the building sewer inlet to minimize pump cycling and provide adequate storage during power outages. Contact the township engineer, Prein&Newhof (616-364-8491), and talk to Chad Sosnowski for specific grinder pump specifications and designing units for multi-family and other applications.

The spec sheets for the different pump chambers are just options that can be selected depending on what the homeowner wants and/or what the plumber recommends.

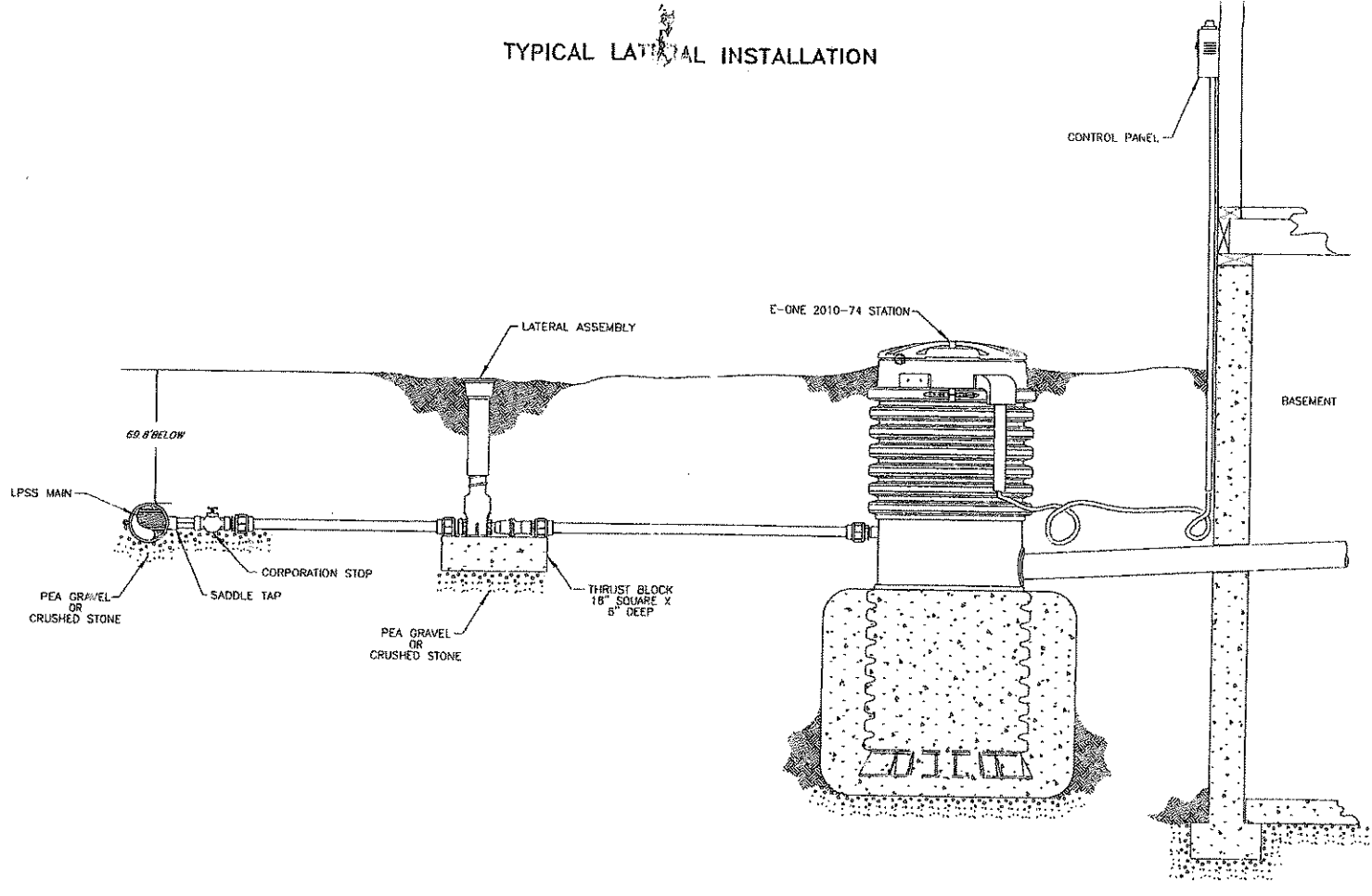
The sheet titled SRA-125-S is the whole pump chamber. The WGL20 is specs on the pump that goes into that chamber. Components in this chamber can be replaced as needed during its lifetime.

The E/ONE EXTREME is a self-contained unit that does not have replaceable components. It is a clam-shell type design that is replaced as a complete unit.

Your plumber will know where to purchase these units. Either of these units is acceptable to the township.

The street layout is too large to fax. To access this information an office visit will be required.

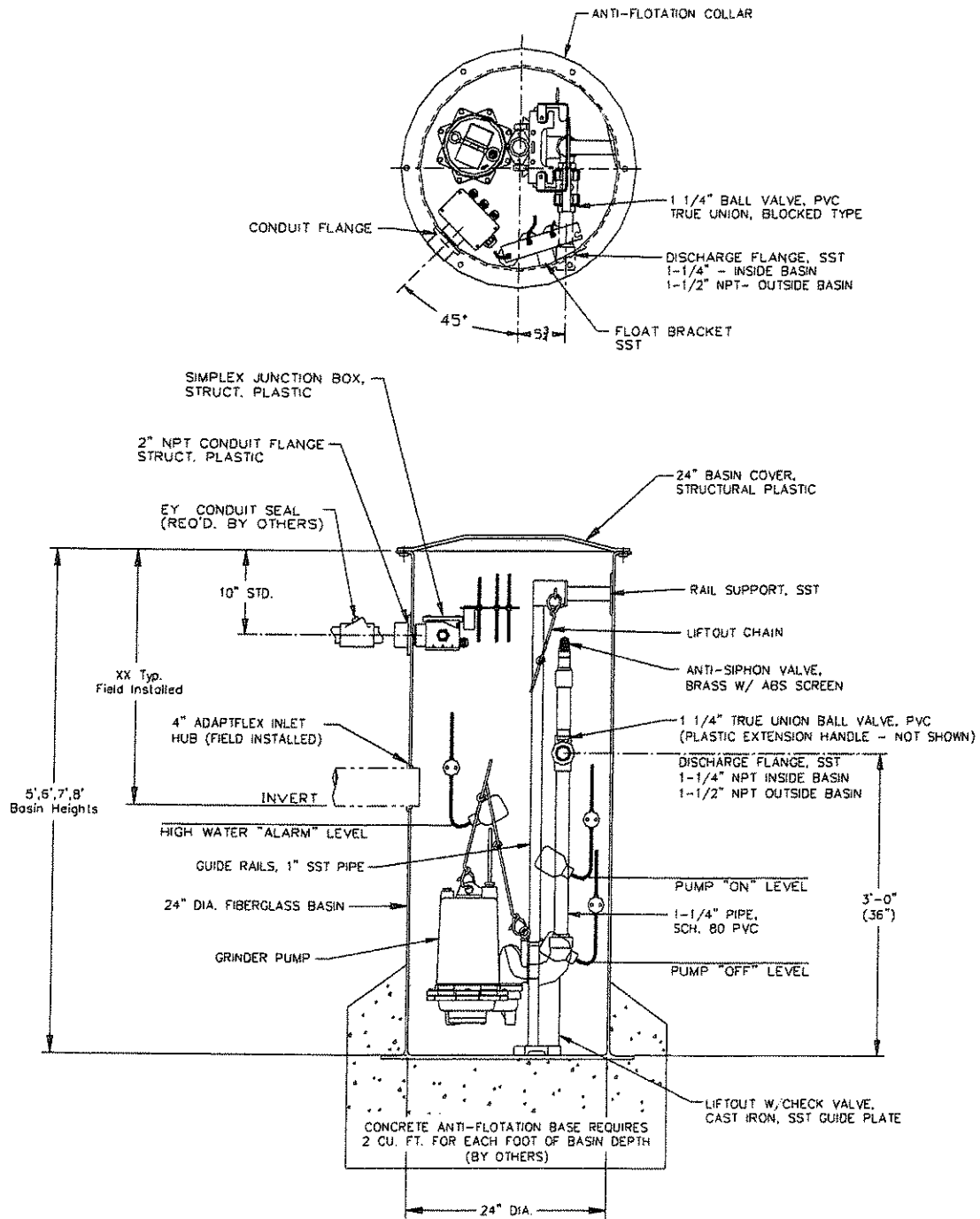
TYPICAL LATERAL INSTALLATION



environment | one
CORPORATION

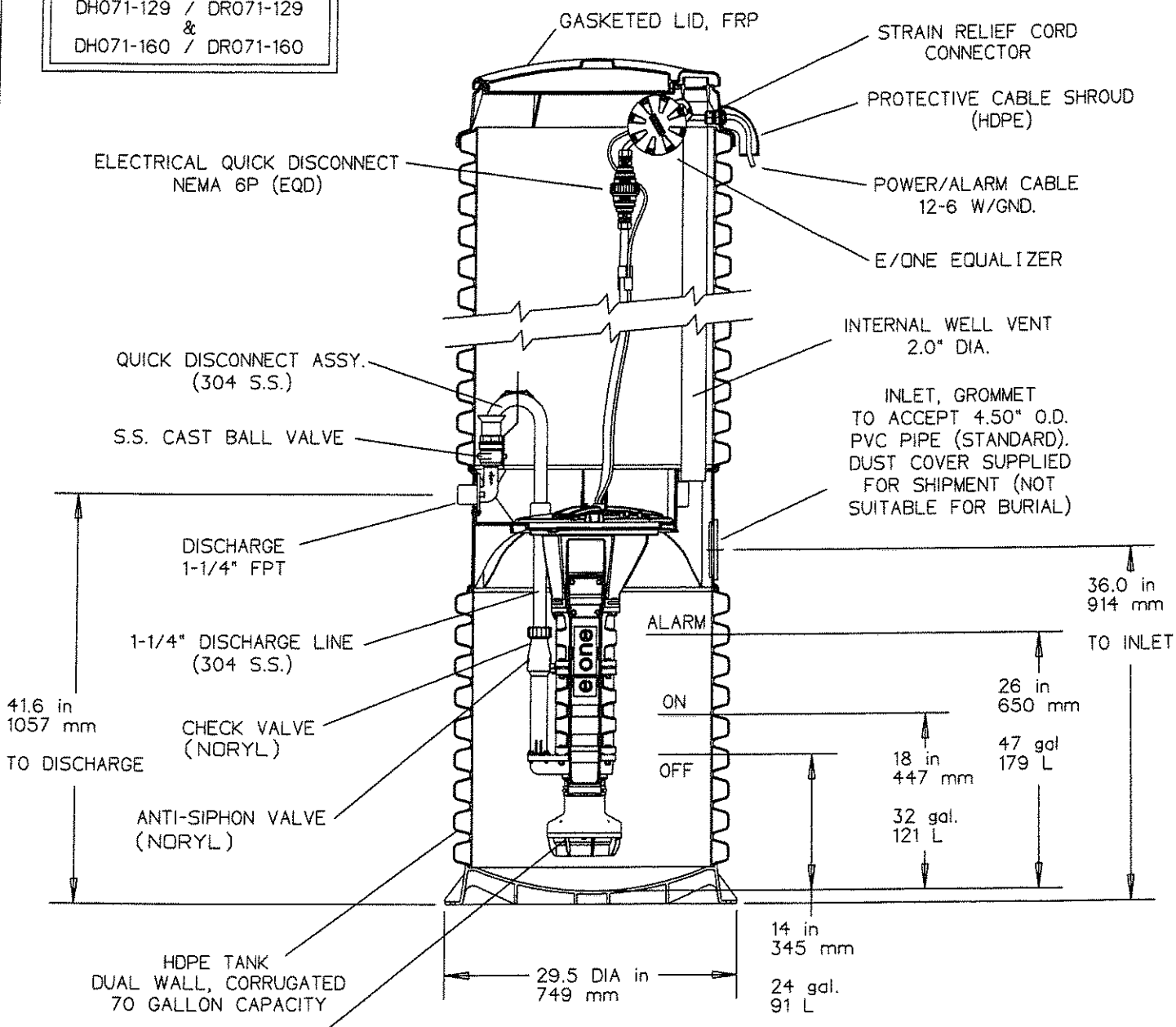
LM000114 REV. -

Pump: MG200
 Control: Float Pro
 Type: Simplex



OPTIONS : **DH071** (HARD WIRED LEVEL CONTROLS)
 DR071 (WIRELESS LEVEL CONTROLS)

FIELD JOINT REQUIRED
 FOR MODELS
 DH071-129 / DR071-129
 &
 DH071-160 / DR071-160



SEMI-POSITIVE DISPLACEMENT TYPE PUMP.
 EACH DIRECTLY DRIVEN BY A 1 HP MOTOR



CONCRETE BALLAST MAY BE REQUIRED
 SEE INSTALLATION INSTRUCTIONS
 FOR DETAILS

AD	CH	07/12/07	A	
DR BY	CHK'D	DATE	ISSUE	SCALE

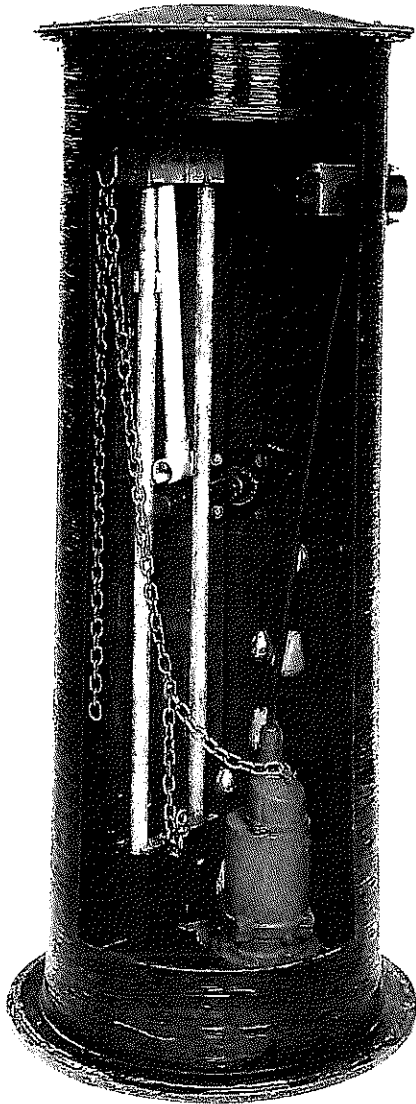


MODEL DH071 / DR071
 DETAIL SHEET

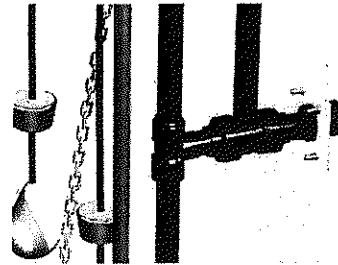
NA0050P02

SRA-125S

Simplex Rail System

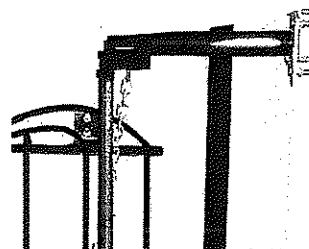
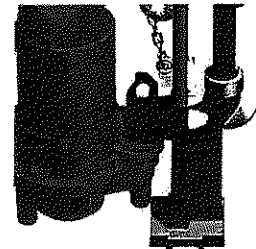


The SRA-125S Rail System is tailored to your specific hydraulic needs for low pressurized sewer system requirements. Engineered with heavy duty cast iron lift-out elbow with built-in check valve. SST hardware and anti-siphon protection, the SRA-125S Rail System is the preferred choice. Offered in simplex or duplex design with centrifugal submersible grinder pumps coupled with a range of quality controls and accessories.



PVC Shut-Off Valve and Traditional Float Controls
Easy to operate with extended handle

Lift-Out
Includes heavy-duty cast iron construction with SST brackets and integral ball check valve.



Brackets and Rails
Stainless steel brackets and rails ensures parts will not corrode.

- Built-in check valve
- Fast and easy pump removal
- No need for personnel to enter basin
- Heavy-duty cast iron construction
- Corrosion resistant with anti-flotation ring
- Multiple basin diameters and basin depths are available
- Positive machine fit with o-ring seal.
- Available with float controls

Myers

Pentair Water