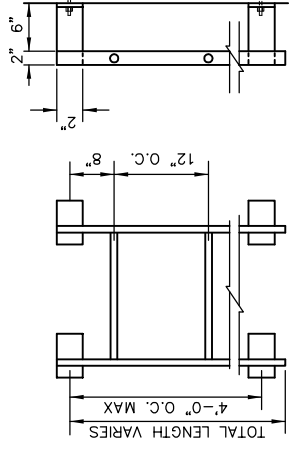


NOTES:

1. ALL BOLTS IN VAULT ARE TO BE STAINLESS STEEL OR TRIPAC.
2. THE LOW FLOW LINE VALVES MAY BE BALL VALVES TO 3" AND GATE VALVES FOR 4" OR GREATER.
3. PRECAST VAULTS MAY BE USED. VAULT REINFORCING IS FOR TRAFFIC LOADING. REINFORCEMENT AND VAULT DESIGN MAY BE ALTERED BY DESIGN ENGINEER FOR NON-TRAFFIC LOADING CONDITIONS.
4. PROVIDE INSULATING CONNECTORS BETWEEN DISSIMILAR METALS WHERE OPERATING PRESSURES ALLOW.
5. USE TAPPING SADDLES FOR ALL TAPS. NO DIRECT TAPS ALLOWED.
6. USE STAINLESS STEEL OR EPOXY COATED/LINED FOR LOW-FLOW PIPING. DUCTILE IRON MAY BE USED FOR 4" OR GREATER.
7. ALL MAINLINE PIPING BETWEEN EXTERIOR GATE VALVES TO BE DUCTILE IRON WITH RESTRAINED JOINTS.
8. LOW FLOW LINE SHALL BE PROVIDED WITH A UNION TO 3" AND RESTRAINED DISMANTLING JOINT FOR 4" AND LARGER.
9. DETAIL SHOWS AN INSTALLATION NOT SUBJECT TO FLOODING. IF THE INSTALLATION IS SUBJECT TO FLOODING, EITHER THE OPEN END OF THE AIR RELIEF VALVE SHALL BE PROVIDED WITH A #14 MESH, NON-CORRODIBLE SCREEN, DOWNWARD ELBOW, AND EXTEND AT LEAST 4 FEET ABOVE GROUND SURFACE PER THE AIR RELEASE VALVE MANHOLE DETAIL OR THE VAULT SHALL BE PROVIDED WITH A DRAIN MEETING UAC R309-550-6(7) REQUIREMENTS.

SECTION



1. LADDER SHALL BE SHOP FABRICATED TO PROPER LENGTH & INSTALLED IN ONE PIECE.
2. SIDE RAILS AND MOUNTING BRACKETS TO BE 1/4"x2" GALVANIZED STEEL PLATE.
3. RUNGS TO BE 3/4"Ø STEEL ROD.
4. ALL WELDS AND SPLICES SHALL BE BRUSHED WITH GALVANIZING AGENT IN SHOP.
5. USE 5/8"x4" BOLT CONNECTIONS.

LADDER DETAILS

PRESSURE REDUCTION VAULT TABLE

MAIN SIZE	PRV HIGH FLOW SIZE	PRV LOW FLOW SIZE	MANUAL AIR VENT	VAULT LENGTH (A)
8"	6"	3"	1"	14'-0"
10"	8"	4"	1 1/2"	14'-0"
12"	10"	6"	2"	16'-0"
14"	12"	8"	3"	16'-0"

GRANTSVILLE CITY
PRESSURE REDUCING VALVE VAULT SECTION