

Chapter 5: All Hazards Identification & Risk Assessment

Conducting risk assessment provides information on the location of hazards, the value of existing land and property in hazard locations, and an analysis of risk to life, property, and the environment that may result from natural or technological hazard events. Specifically, the three levels of a risk assessment are as follows:

- 1) ***Hazards Identification*** identifies the geographic extent and potential severity of the hazard and the probability of its occurrence. Maps are frequently used to display hazard identification data. The Wyoming State Geological Survey and the Fremont County hazards mitigation team identified nineteen (19) potential hazards, ten (10) of which were considered to be significant enough they could affect any or all communities within the county. The geographic extent of each of the identified hazards was identified using Geographic Information System (GIS) computer technology and the best available data.

Documentation of climatic events have been reported through NOAA Satellite and Information Service; National Environmental Satellite, Data, and Information Service (NESDIS); National Climatic Data Center between January 1, 1950 to July 31, 2009

- 2) ***Profiling Hazard Events*** describes the causes and characteristics of each significant hazard, how the hazard has affected Fremont County in the past, how it could affect Fremont County in the future, and what part of Fremont County's population, infrastructure, and environment is vulnerable to each specific significant hazard. A profile of each hazard discussed in this plan is provided in each hazard section. For a full description of the history of hazard specific events, please refer to the appropriate hazard chapter.
- 3) ***Vulnerability Assessment/Inventory Assets*** combines hazard identification with an inventory of the existing (or planned) property and population exposed to a hazard. Critical facilities are of particular concern because they provide essential products and services to the general public that is necessary to preserve the welfare and quality of life in Fremont County. This planning process identifies and maps critical facilities within Fremont County and are illustrated in this section. Maps of the municipalities and rural areas are included, showing the location of critical infrastructure.

Hazards Recognition

In the spring of 2010 the Wyoming Office of Homeland Security (WOHS) and the Wyoming Survey & Analysis Center (WYSAC) contracted to assess public knowledge and view about a variety of hazards and the need of hazard mitigation at the state and community levels. Even though the survey results are not specific to Fremont County, they reflect a state-wide view. The following information was obtained from Wyoming Survey & Analysis Center.

Threat of specific hazards - Wyoming residents think that the three specific hazards of severe winter weather, wildfire and drought are of medium-to-high threat to affect the state within the next five years.

Personal impact of specific hazards - The hazards of severe winter weather, drought and wildfire cause residents the most concern with regard to these hazards' potential to harm them, their families or their property.

Other findings - Nearly half of Wyoming residents claim to have personally experienced wildfire in Wyoming, while clear majorities have personally experienced severe winter weather, severe non-winter weather, and drought within the state. Over half of Wyoming households have an Emergency Supply Kit (defined in the questionnaire as extra food, water, batteries and other emergency supplies), while only one-third of Wyoming households have a hazard plan for any specific hazard that may affect them.

Not surprisingly, severe winter weather is the hazard with which the greatest percentage (85%) of responders have had personal experience, followed by severe non-winter weather and drought. Over one-third of households report to have a plan on how to handle any of the named hazards addressed in the survey.

Source: Wyoming Survey & Analysis Center. "Public Views on Wyoming Hazards and Hazard Mitigation Survey, 2010, WYSAC Technical Report No. SRC-1016 June, 2010.

Hazard Identification

The process of hazards identification results in the identification of the geographic extent and potential severity of the hazard and the probability of its occurrence. Maps are frequently used to display hazard identification data. The Wyoming State Geological Survey and the Fremont County hazards mitigation team identified nineteen (19) potential hazards, eight (8) of which were considered to be significant enough they could affect any or all communities within the county with a high probability of happening. The geographic extent of each of the identified hazards will be identified using Geographic Information System (GIS) computer technology and the best data available.

The table below shows all potential hazards that were identified and the communities that the hazard may effect. A description of each hazard is presented below the table.

POTENTIAL HAZARDS	Lander	Riverton	Dubois	Hudson	Pavillion	Shoshoni	Rural Areas
Hazards							
Civil Disobedience	X	X	X	X	X	X	X
Dam Failure	X	X		X			X
Earthquake	X	X	X	X	X	X	X
Electrical Power Failure	X	X	X	X	X	X	X
Fire -Urban Fire	X	X	X	X	X	X	X
Fire-Wildland Fire	X	X	X	X			X
Flooding -Flash	X	X	X	X	X	X	X
Flooding -River	X	X	X	X			X
Hazardous Materials Spills							
Fixed facilities	X	X	X			X	X
In Transport	X	X	X	X	X	X	X
Landslides	X		X				X
Mined-Out-Areas				X			X
Severe Weather Events							
Drought	X	X	X	X	X	X	X
Hailstorm	X	X	X	X	X	X	X
High Winds	X	X	X	X	X	X	X
Thunderstorms / lightning	X	X	X	X	X	X	X
Winter Storm/Blizzards	X	X	X	X	X	X	X
Windblown Deposits							X
Yellowstone Explosive Event	X	X	X	X	X	X	X

POTENTIAL HAZARDS DESCRIPTIONS

Civil Disobedience: Riots or terrorist acts that result in damage to property or loss of life. There have been no significant events of this type in the recent history of Fremont County.

Dam failure: Partial or complete failure of a dam. There are a number of dams in Fremont County that are classified as “high hazard” by the Wyoming State Engineer’s Office. The failure of any of those dams could result in property damage or loss of life.

Through the earlier mitigation plan it has been discovered four (4) high hazard dams that did not previously have Emergency Action Plans. This situation has been corrected with help from the Wyoming State Engineer's Office and local dam owners. At this time only (1) dam remains to be addressed. This is the Snyder Creek Detention in the Lysite area. This agency has no information regarding this particular location. Weather is a hindrance at this time and prevents this agency from doing an in-person survey. Available information is limited to a Google map. If available, more precise information on the Snyder Creek Detention will be included at the next updating of this plan.

Plans are currently on file at the Fremont County Emergency Management Agency office for Worthen Meadows and Frye Lake Reservoir. Mapping of inundation areas has been completed by the Wyoming State Engineer's Office and documentation has been completed for these areas. OSW Reservoir above Lysite, Wyoming has completed an emergency operation plan which is currently on file at Fremont County Emergency Management Agency and State Engineer’s Office in Cheyenne. Training and exercising of these plans will be completed in the future for improvement of each plan.

Potential flooding zones for Burlington Reservoir (OSW Reservoir) located above Lysite Wyoming and Frye Lake Dam and Dike for the Enterprise Irrigation and Power Company maps located above Lander Wyoming cannot be scanned into this document. The maps presented to Fremont County Emergency Management are too large to scan with current equipment available to this agency. However, they are on file at the Fremont County Emergency Management Office along with the Emergency Action Plans for these locations.



Map of:

Latitude: 43.35333 Longitude: -107.56833
Lysite, WY 82642

Notes

Snyder Creek Dam
Fremont County Wyoming



[All rights reserved. Use subject to License/Copyright](#)

Directions and maps are informational only. We make no warranties on the accuracy of their content, road conditions or route usability or expeditiousness. You assume all risk of use. MapQuest and its suppliers shall not be liable to you for any loss or delay resulting from your use of MapQuest. Your use of MapQuest means you agree to our [Terms of Use](#)



Map of:

Latitude: 42.71056 Longitude: -108.87278
Lander, WY 82520

Notes

Frye Lake Reservoir



[All rights reserved. Use subject to License/Copyright](#)

Directions and maps are informational only. We make no warranties on the accuracy of their content, road conditions or route usability or expeditiousness. You assume all risk of use. MapQuest and its suppliers shall not be liable to you for any loss or delay resulting from your use of MapQuest. Your use of MapQuest means you agree to our [Terms of Use](#)

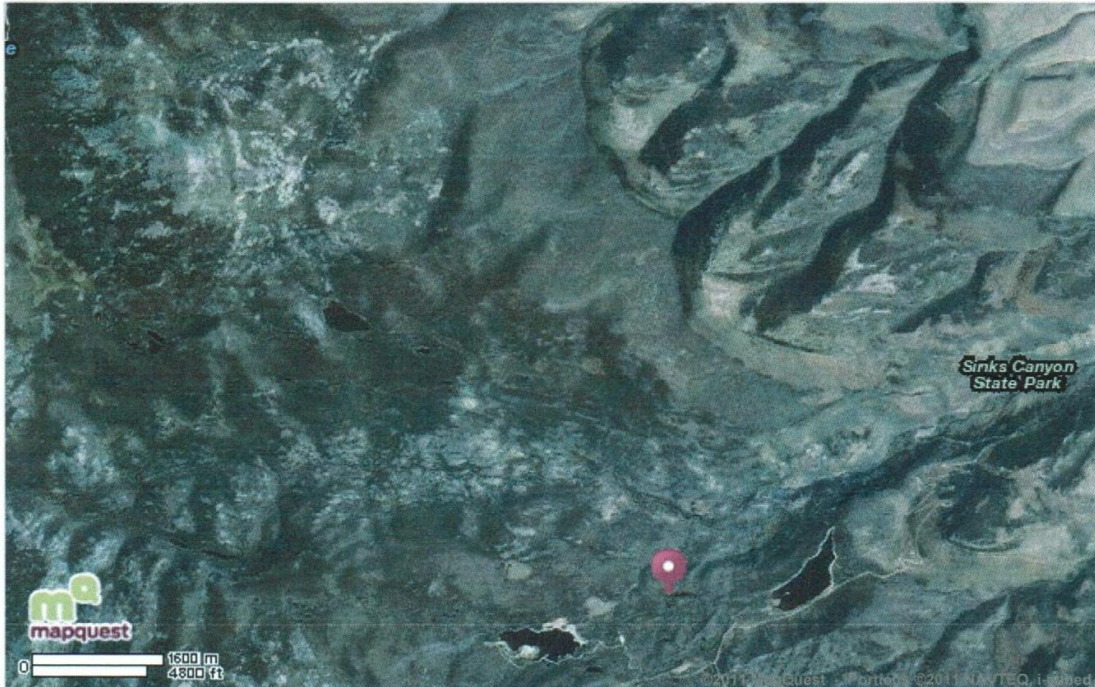


Map of:

Latitude: 42.70667 Longitude: -108.90167

Notes

Worthen Meadows Dam



[All rights reserved. Use subject to License/Copyright](#)

Directions and maps are informational only. We make no warranties on the accuracy of their content, road conditions or route usability or expeditiousness. You assume all risk of use. MapQuest and its suppliers shall not be liable to you for any loss or delay resulting from your use of MapQuest. Your use of MapQuest means you agree to our [Terms of Use](#)

POTENTIAL HAZARDS DESCRIPTIONS (CONT.)

Earthquake: The trembling of the surface of the earth caused by movement along a fault, mine collapse or explosion, or volcanic activity. Fremont County has a long history of earthquakes, some of which have caused property damage. Most earthquakes experienced in the county are not felt by anyone due to the sparse population or strength of the earthquake.

Electrical Power

Failure: The cessation of power transmission due to storms, earthquakes, landslides, equipment failure, or floods. There are numerous power failures that have been documented in Fremont County, although none have resulted in loss of life or destruction of property.

Flooding and Flash

Flooding: An overflowing of water on an area normally dry. Floods can occur as slow-rising water or they can occur quickly as flash floods. Fremont County has a long history of flooding that has resulted in the loss of life and significant property destruction. Detailed FIRMs showing building exposure values by jurisdiction are in Chapter 6.

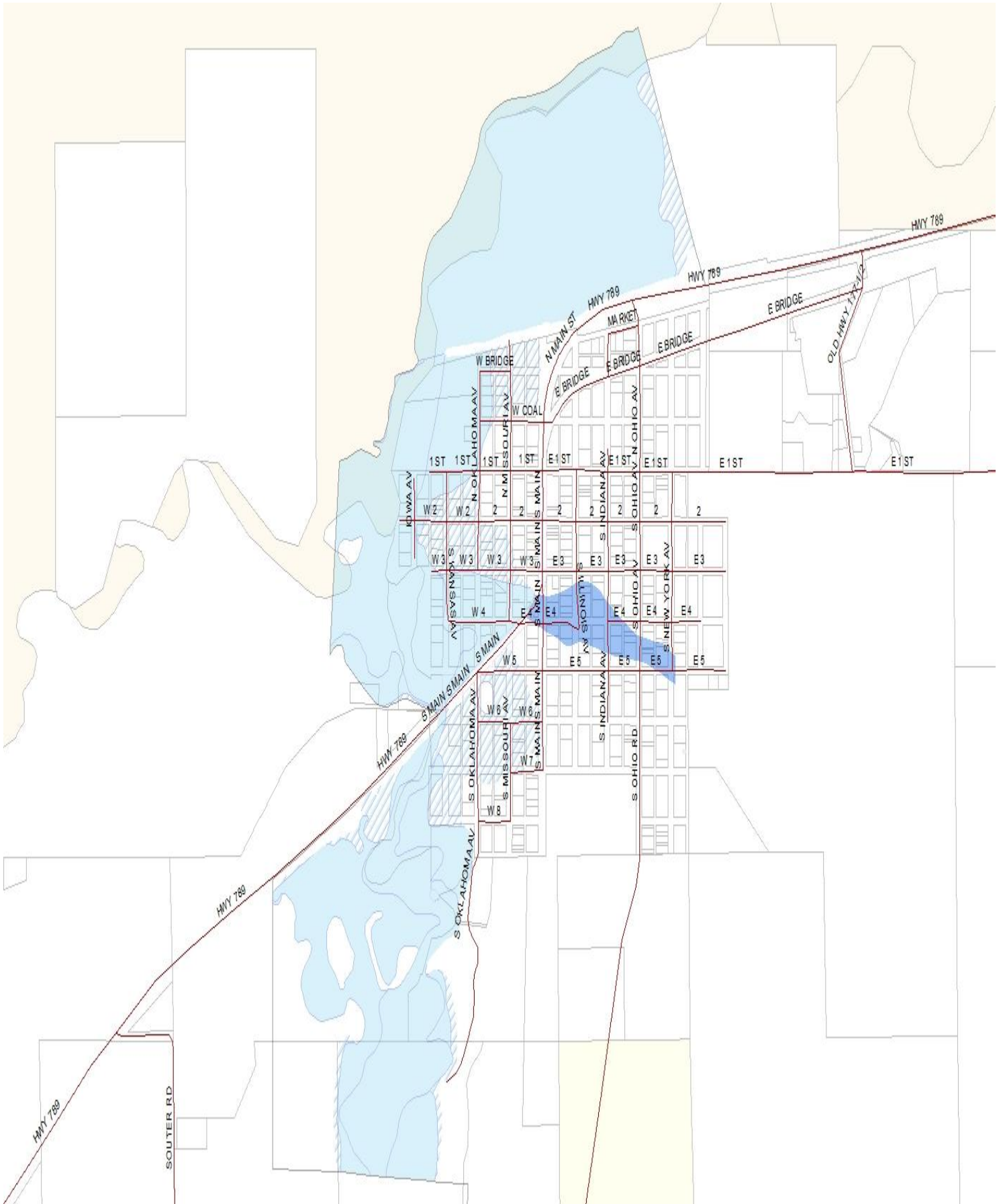
The following maps of Dubois, Riverton, Hudson and Lander are municipalities in the NFIP flood program. Areas such as Riverton have minimal impact in the flood area due to the bluff that runs along the river. Increased flooding damage would be possible in the Dubois, Lander and Hudson areas due to the waterway going through, or in close proximity to, residential areas. These maps were obtained from the Fremont County Planning Department showing the possible flooding areas in the four municipalities currently (Source: Planning Department 2011).

Any area may be affected by flash flooding due to a thunderstorm or heavy rain occurring in higher elevations. These severe rain storms or thunderstorm are more difficult to track than rising water from a stream or river.

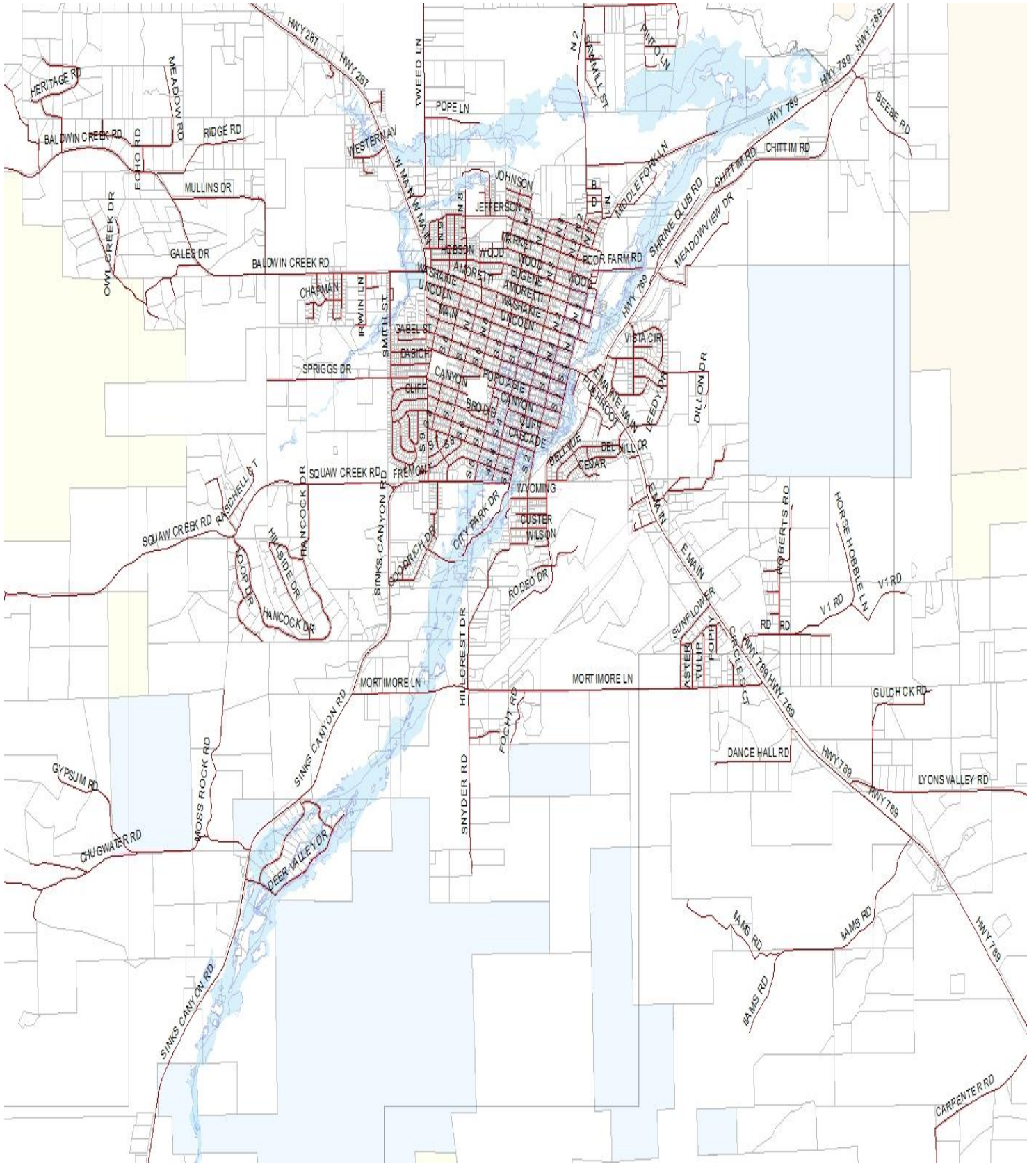
RIVERTON FLOOD ZONE



HUDSON FLOOD ZONE



LANDER FLOOD ZONE



POTENTIAL HAZARDS DESCRIPTIONS (CONT.)

Hazardous

Material Spills: The spilling or release of hazardous or toxic materials on the ground, into surface or ground water, or into the atmosphere. This is usually not related to natural hazards, and as such is not addressed in any more detail in the plan.

The Fremont County Local Emergency Planning Committee (LEPC) does have an emergency action plan addressing hazardous materials and how they will be handled in Fremont County. This plan was reviewed and updated in January 2008. This plan is accepted and authorized annually as the current hazardous materials emergency operations plan through the LEPC in an open meeting, the most recent being March 2, 2011. However, in support of local response to a hazardous materials situation the Regional Emergency Response Team (region 5/Wyoming), composed of Fremont, Sublette and Teton counties (dispatched through the Wyoming Office of Homeland Security) would be requested. The team consists of members who have specialized training in hazardous materials response and are committed to working efficiently to minimize the adverse effects of oil and chemical incidents that affect safety, human health and the environment.

The Emergency Planning and Community Right to Know Act was instituted in 1986 to inform communities of chemicals and chemical hazards present in their communities. Companies reaching established thresholds are mandated to report to the LEPC, local fire department and State Emergency Response Commission (SERC). The SARA Tier II reporting facilities to the LEPC in 2000 numbered 42 as fixed facilities storing hazardous materials. In 2010, 27 facilities reported to the LEPC. These numbers would show a fluctuating level of hazardous materials being housed in Fremont County fixed facilities.

This office has researched and found no statistics on hazardous materials being transported into, or through, Fremont County.

Landslides: Landslides are one of the most common geologic hazards in Wyoming. Mountainous terrain, higher precipitation levels, higher levels of seismic activity and local geology combine to produce the greater number of landslides. Various landslides have closed roads and railways in the state, as well as damming rivers with subsequent ponding, later dam breakage and flooding.

Minimal data is available which has documented landslides in Fremont County. Visualization of the geological records of the area show us that landslides have occurred in the past and have been documented in this plan as historic events. Documentation has been included from the Wyoming State Geological Survey as to historic landslide events.

Mined-Out-Area: Early coal mines in Fremont County were not designed and/or constructed well, resulting in mined-out area collapse. As of January 2011, no mined out areas have been reported or subsidence documented. This is not to say that there are none in Fremont

County, but that none of the mined-out areas have been documented. The most likely areas for this to occur would be in the South Pass and Hudson due to early mining in these areas.

Severe Weather: Severe weather includes winter storms/blizzards, tornadoes, thunderstorms, hurricane-force winds and hail storms. All of these events occur with some regularity in Fremont County. Because of the isolation of some farms and ranches, and the overall distance between towns and populated areas, most people who reside in Wyoming have extra provisions and supplies on hand at all times to sustain them should they become isolated, as well as maintaining emergency equipment and supplies in their vehicle for travel during poor weather.

Drought : A prolonged period of reduced precipitation that results in depleted groundwater supplies, reduced surface water flow, or severe impacts on the agricultural community. The State of Wyoming has been in drought conditions since 1999, and impacts have been observed in Fremont County. As of March 2011, dry conditions remain across a majority of the state.

*Source: United States Department of Agriculture
National Agricultural Statistics Service;
Wyoming Crop Weather.*

Hailstorm: All areas within Wyoming are prone to storms that can cause significant damage and economic loss. Wyoming has experienced such storms, and has had documented historic hail damage of over \$674 million. Because of the turbulent weather sometimes affecting the county, a significant hailstorm resulting in a loss of over \$120.5 million with probable associated injuries or deaths could occur at least every 100 years in the state as an average.

High Winds: There are no regions of North America categorically immune to potentially destructive winds. Western peaks, valleys, plains and deserts are subjected to the most consistently high winds, except for occasional hurricanes and tornadoes. Wind gusts of 80 miles per hour are not uncommon in these areas.

The highest wind speeds recorded in the last fifty years in these high wind areas are:

- ▶ Colorado 130 mph (200 mph - once in 1997)
- ▶ Kansas 126 mph
- ▶ Nebraska 115 mph
- ▶ Wyoming 115 mph

These winds can tear off, or repeatedly lift and weaken the roof covering, eventually threatening its ability to protect the interior of the building from moisture.

Source: <http://www.endur-allroofing.com/wind.htm>.

Thunderstorms / Lightening: Although not as significant in relation to some of the other natural hazards, lightning remains a certain danger. Lightning has caused a number of deaths and injuries in Wyoming. Lightening threatens outdoor recreationists, especially those venturing to high and exposed areas. Lightning can also be responsible for wildland fires, which can result in the loss of property and life.

Winter Storms / Blizzards: Severe winter storms affect more people in Fremont County than their summer counterparts, even though they are inherently less violent. Severe snowstorms are generally extensive across the state and usually require a day or two to cross and completely exit the state. The largest snow storm recorded since 1891 was on April 21-24, 1999 when Lander received 52.7 inches of snow during one event.

Source: NOAA

The most significant blizzard in Wyoming's history occurred from January 2, 1949 to February 20, 1949. Snowfall in parts of eastern and southeastern Wyoming measured up to 30 inches, with drifts 20 to 30 feet high. Seventeen people perished, along with 55,000 head of cattle and over 105,000 sheep. Total economic loss was more than \$9 million dollars. In 2009 dollars, the loss would be over \$81 million.

Source: Consumer Price Index and Wyoming Multi-Hazard Mitigation Plan

Windblown Deposits: Wyoming has some of the most significant windblown deposits in the U.S. Although past problems with windblown deposits are not well documented, increasing development in rural areas across the state can be expected to result in destabilization of sand dunes.

Source: Wyoming State Geological Survey

Tornado: Tornadoes are a hazard in Fremont County and are especially prevalent in the eastern part of the state, but have been reported in all counties. Records indicate that there have been 523 recorded tornado events reported between 1907 and 2006 in Wyoming [Source: Wyoming Multi-Hazard Mitigation Plan Approved June 18th, 2008.] Of these, 186 tornados have been classified as damaging. Damage is defined by events resulting in loss of property, life and any events of F2 (damage rating of considerable on Fujita scale) or greater.

Urban Fire: Fire in an urban setting that includes homes, businesses or other infrastructure. There have been no catastrophic urban fires documented in Fremont County although large wildland fires enter the living space of man more each year as the population expands into the more rural and wild areas.

Wildland Fire: Fire that occurs in rural forested or grassland areas. There have been significant wildland fires in Fremont County, some of which resulted in the loss of life. At this time the office has been unable to obtain cost figures on values saved or lost in the county. This statement was obtained from the FireWise Coordinator in Fremont County, and is the best information available at this time:

"I spoke with you about a dollar value on wildland fire loss, or property saved. You had mentioned that you have not had any luck with getting dollar figures from any of the agencies, and I have found the same thing. I spoke with Cindy at the Fremont County Fire Dist. Office and she confirmed what I

thought. She said that the individual battalions do not provide the information to her, unless a house or structure of some sort is damaged. So very seldom does she get anything at all. I suppose with this in mind, it is hard to have figures at any other level when they do not originate from the start.

Ron L. Wempen
Fremont County Firewise Coordinator
305 South Smith Road
Riverton, Wy 82501
Office 307-857-3030
Cell 307-851-2919 or 307-850-7071"

Yellowstone
(Explosive
Volcanism):

Large-scale explosive events at Yellowstone occurred 640,000 years before present, 1,300,000 years before present, and 2,100,000 years before present. The recurrence intervals of these events range from 660,000 years (1,300,000 – 640,000) to 800,000 years (2,100,000 – 1,300,000). Only 640,000 years has elapsed since the last event, so 20,000 – 160,000 years may be left before a large event is expected. There are smaller events that occur more frequently. These include several lava flows that were emplaced at approximately 150,000 years before present, 110,000 years before present, and 70,000 years before present. These events were localized within the Yellowstone area, not having the widespread effect of the previously described explosive events. Because of the overly long expected occurrence of frequency (greater than 10,000 years) for explosive volcanism at Yellowstone, and the fact that a good response or mitigation plan is not possible for an event of this magnitude, it was not analyzed in this document.

Source: Wyoming State Geological Survey

Hazard Probability & Severity Expected

A summary of each hazard is presented below the table with **H** being for high, **M** being for medium and **L** being for low for the event of probability at the countywide level. The communities that would be affected, if the event occurred, are listed to the right with the expected magnitude or severity being given the same rating scale as to the chance of the event occurring in that community.

HAZARDS RANKINGS

Hazards	Probability or occurrence	Lander	Riverton	Dubois	Hudson	Pavillion	Shoshoni	Rural Areas
	Civil Disobedience	L	H	H	H	H	H	H
Dam Failure	L	H	H	L	H	L	L	H
Earthquake	M	M	M	M	M	M	M	M
Electrical Power Failure	H	H	H	H	H	H	H	H
Urban Fire	H	H	H	H	H	H	H	H
Wildland Fire	H	H	H	H	M	M	M	H
Flooding-Flash	M	H	H	H	H	H	H	H
Flooding-River	H	H	H	H	H	L	L	H
Hazardous Materials Spills								
Fixed facilities	M	L	M	L	L	L	M	M
In Transport	M	M	M	M	M	L	M	M
Landslides	M	M	L	M	L	L	L	M
Mined-Out-Areas	L	L	L	L	L	L	L	L
Severe Weather								
Drought	H	H	H	H	H	H	H	H
Hailstorm	H	H	H	H	H	H	H	H
Hurricane force winds	H	H	H	H	H	H	H	H
Thunderstorms / lightning	H	H	H	H	H	H	H	H
Winter Storm/Blizzards	H	H	H	H	H	H	H	H
Urban Fire	H	H	H	H	H	H	H	H
Wildland Fire	H	H	H	H	M	M	M	H
Windblown Deposits	L	L	L	L	L	L	L	L
Yellowstone Explosive Event	L	H	H	H	H	H	H	H

Due to the large geographic size of Fremont County being just under 10,000 square miles and the wide distribution of communities in the county, many factors contribute to the hazards from weather and man-made incidents that citizens face each day. The altitude of communities in the county range from South Pass City at 7,808 feet above sea level to Shoshoni with an altitude of 4,842 feet, the difference of altitude being 2,966 feet. Weather condition difference include wind and moisture events having a wide influence on how it will affect the area. Other communities altitudes across the county include Dubois at 6,904 feet, Riverton at 4,951 feet and Lander at 5,354 feet. The Altitude alone would influence weather conditions and events causing a wide variety of conditions to affect occurrence and severity issues in each community.

In the Lander valley and the foothills of the Wind River Mountains there is a condition which occurs referred to as an "up slope" condition. Wind blows from the east to west against the foothills causing the moisture to rise up the eastern slope of the mountain. This event usually shows the greatest results in a moisture driven event.

Although Fremont County is large in size the most populated areas would be considered relatively small to major populated areas in the country. Fremont County's more populated areas tend to have an

increase in chance of a hazardous materials events. This increase may be due to larger volumes of traffic in the area. More populated areas would also have an increase in the concerns due to a power outage affecting more homes having electric heat and more citizens or facilities providing concentrated oxygen to their populations as in hospitals and nursing homes. If that power outage were to occur in the cold months of December, January or February, citizens needing assistance for heating of homes would be greatly increased.

The eventual answer to hazard probability, severity and occurrences may lay in the hands of "Mother Nature". After all "she" holds the cards that will influence what citizens must mitigate, prepare for, respond to and recover from in all events.

"It's always been a possibility. We're helpless against Mother Nature, but we can try to minimize the damage". Jack Franzil.

Source: <http://thinkexist.com/search/searchquotation.asp>

Hazards Rankings

Over the last two years, the Fremont County hazards mitigation team, which includes the Fremont County Emergency Management Agency, the Local Emergency Planning Committee, the Fremont County Planning Office, the Fremont County Association of Governments, and local citizens, have reviewed the hazards listed above. The team determined that six of the hazards need to be profiled in greater detail for inclusion in the Hazard Mitigation Plan. The decision was based upon potential severity of the hazard and the probability of occurrence. The six hazards selected are flood, landslide, severe winter storm, drought, wildland fire and earthquake.

Fremont County Government and Fremont County Emergency Management Agency recognized that all rankings may be subject to change due to considerations and future events. These changes could be influenced by events in other parts of the region or world and the media bringing them to the attention of the general public in the county (i.e., California wild fires generate questions by locals as to the wildland/urban interface and mitigation and preparedness for such an event if it were to occur in Fremont County).

At the end of each hazard chapter, a summary of hazards effects and probabilities is presented. The effects are presented as high, medium or low. A high effect equates to significant damage or impact, a medium effect equates to moderate damage and a low effect equates to low damage.

The probability of an occurrence is listed for each hazard. A hazard that occurs or is expected to occur every 5 years or less is assigned a high probability. A hazard that occurs or is expected to occur every 5-50 years is assigned a medium probability. A hazard that occurs less frequently than every 50 years is assigned a low probability.

Unique Risks to Fremont County Communities by Jurisdictions

Lander, Riverton, Dubois, Hudson, Pavillion, Shoshoni, Rural Areas and Wind River Indian Reservation.

Civil Disobedience - Because of mixed races and periodic radical actions between families on the Wind River Reservation, sometimes the county has civil disturbance in the form of family-against-family wars, and gang wars. This tends to run in sections of time, however, the county has not had any for several years. This may, or may not, be contained on the reservation. Basically, one has to assume that most citizens in Fremont County carry a weapon; few do not. Therefore, violence can erupt in any community, neighborhood or area on a moment's notice involving all races and law enforcement in a common event. This can result in loss of life, as well as financial loss to business and residential areas.

Dam Failure - Several dams are located upstream from population centers in Fremont County (the communities affected by each dam is listed in parenthesis.) This includes Bull Lake (Kinnear, Riverton) Ray Lake (Ft. Washakie, Arapahoe, Riverton) Washakie Reservoir (Ft. Washakie, Arapahoe, Riverton). The dams are Bureau of Reclamation dams and have emergency operation plans in effect. Dams owned by municipalities are Wortham Meadows (Lander), Frye Lake (Enterprise Irrigation District) and OSW (Burlington) Lysite Reservoir which is owned by the Lysite Utilities Association. These dams have Emergency Action Plans written by the owners of each dam.

Earthquake - Earthquakes can affect all of Fremont County. A hot spring is located near Ft. Washakie (this is in conjunction with hot springs located in Washakie County in Thermopolis to the north of Fremont County.) There is hydrothermal and geothermal activity in this area of the State of Wyoming. Multiple earthquakes occur each year in the Beaver Rim or Jeffrey City area (see chapter 11.) They are generally minimal in effect, register on seismographs but are not usually felt by citizens in the area. the potential for severe loss of life and property is ever present, but unpredictable.

Electrical Power Failure - Due to the dependence on modern appliances, heating with electricity and all the "basic necessities" we now have in life, people are very dependent on electricity for daily operations. Outages can occur from weather conditions such as blizzards, ice storms and wind storms downing power lines.

Fire - Fire can affect any of the communities through an urban interface situation as in structures in heavy landscaping or with shrubs / trees planted close to the structure as well as wildfire in running in light fuels such as grass and low shrubs. Fire can also enter our communities through the burning of river bottom shrubs and moving into towns and populated areas. Fire can occur due to neglect of property or heavy loading of fuels in specific areas.

Flooding - Flooding may occur in any community in the form of flash flooding from a slow moving thunderstorm. Flooding may occur from heavy rainfall or combination of several cells into a large thunderstorm to cause flash flooding, i.e. basements flooded, water over roads, damage to bridges due to trash on them as well as rising rivers as in snow melt running off the mountains from snow pack. Sometimes a combination of rapid snow melt with warm winds can affect communities as well as rain falling on snow pack and causing rapid snow melt and water runoff coming up.

Hazardous Materials - In the modern world many products are made from synthetic chemicals or combinations of materials. Hazardous materials are part of our normal daily world today. When the hazardous materials occur in a large spill, under fire conditions or mixed with other chemicals then they become a hazard to the people around them. Life safety can be an immediate concern to all in the area.

Landslides- Landslides may occur in any area that has hills, mountains or slopes in the communities. The increase of landslides may be due to erosion of the stabilizing ground base such as a flooding event or a rain event causing the soil to be unstable as well as saturated. Slides may occur in small areas with cracking of the ground surface or in an entire mountain side sliding down into a creek to cause

damming of the creek into a small lake. These conditions are exceptionally unstable due to the saturation of the dirt causing the "dam" to easily eroded.

Mined-Out-Areas- Mined out areas may occur in any area that has had historic mining activity or below ground digging activities. This may be caused by tunnels collapsing or subsiding into the area mined. It may also be the dirt collapsing into earlier excavated water well. Any below ground excavation may cause an area susceptible to cave in or subsidence.

Severe Weather (Drought, Hailstrom, High Winds, Thunderstorms/ Lightning, Winter Storm/Blizzards, Windblown deposits) - Severe weather can happen in a multitude of different events or combination of events. Just as the flooding issues above may be caused by rain on snow, thunderstorms and high winds may arrive in combination with the windblown dirt covering or causing poor visibility in an area. Areas with drought concerns may be more susceptible to thunderstorm or lightening conditions causing wildland fires. Windblown deposits may occur in dirt blowing in the streets or onto a roadway causing a dirt "snow drift".

Wind River Indian Reservation

The Northern Arapaho and Eastern Shoshone Tribes have their own mitigation plan under development.

Infrastructure

What is "Infrastructure"?

The *American Heritage Dictionary*, defines the term "infrastructure" as "The basic facilities, services, and installations needed for the functioning of a community or society, such as transportation and communications systems, water and power lines, and public institutions including schools, post offices, and prisons."²

² *The American Heritage Dictionary of the English Language*, Fourth Edition. Houghton Mifflin Company. Boston, MA. 2000. (Definition 2).

The Homeland Security Presidential Directive – 7 (HSPD-7) issued in December 2003 established the policy of the United States to enhance the protection of national critical infrastructures against terrorist acts that would significantly diminish the responsibility of federal, state, and local governments to perform essential security missions and to ensure the general public health and safety. The USA PATRIOT Act of 2001 defines critical infrastructures as "those physical and cyber-based systems so vital to the operations of the United States that their incapacity or destruction would have a debilitating impact on national defense, economic security, or public safety." More specifically, critical infrastructures are those people, things or systems that must be intact and operational in order to make daily living and work possible.

Source: U.S. Fire Administration, 16825 S. Seton Ave.,
Emmitsburg, MD 21727 (301) 447-1000 Fax: (301) 447-1346
Admissions Fax: (301) 447-1441

Critical Infrastructure is the network of important systems that deliver essential services that people rely on. It includes water, sewage, electricity, gas, telephones and transportation.

Due to the fact that a value may be placed on a structure, the cost to replace or return to current operations level of service, if it is damaged or destroyed in a disaster, is only an educated guess regarding that value to return current operations to functioning level.

For infrastructure we have looked at government facilities owned by the municipalities and the county along with special districts. Value of the structure was obtained from the Fremont County Assessor's Office at 2010 values. The following table shows critical infrastructures and the values. These values reflect the market value of the physical structures identified. No values have been placed on the utilities or equipment in the facility that may be needed to make the facility functional for use. No value has been given to the trained personnel that may be needed to operate in each facility. Only the fair market value of the physical structure is documented here.

Maps noting the locations of the critical infrastructure are included following the table of values on the physical structures. Minimal critical infrastructures have been documented here. No value has been determined for utilities, buried water lines, phone communications or transmission routes that may be considered as infrastructure items.

There are 166 buildings and infrastructure listed in the following tables. They are essential to each municipality in day-to-day operations of meeting citizens needs. The updated valuation on each

Fremont County Government

Facility	Location	Valuation
Detention Center	460 Railroad, Lander	\$ 11,710,609+
Dubois Ambulance	702 Mechem, Dubois	\$ 175,580+
Dubois Shop	Mercantile & Hays, Dubois	\$ 334,210+
EMA Warehouse	4441 Skylane, Riverton	\$ 481,880+
Extension Office	130 Eugene Street, Lander	\$ 176,624+
Lander Ambulance	301 1st Street, Lander	\$ 1,054,015+
Lander Ambulance (old)	6th & Garfield, Lander	\$ 449,659+
Lander Courthouse	450 N. 2nd Street	\$ 17,427,309+
Lander Roads Shop	1578 Dubois Hwy, Lander	\$ 1,900,306+
Lysite R & B Shop		\$ 238,872+
Lysite Shop		\$ 321,552+
Pavillion R & B Shop	Main & Dallas, Pavillion	\$ 606,369+
Public Health Nurse Fremont Co. Corner Fremont Co. EMA	322 N. 8th West, Riverton	\$ 606,958+
Riverton Ambulance	1052 Petersdorf, Riverton	\$ 1,240,012+
Riverton Equip Bldg	4441 Skylane, Riverton	\$ 1,038,824+
Riverton Office Center	814 & 818 S. Federal, Riverton	\$ 2,699,209+
Riverton Roads Shop	4441 Skylane, Riverton	\$ 1,454,027+
Solid Waste Baling Station	542 North Smith Road	\$ 339,000**
Solid Waste Location	743 Sand Draw Road, Riverton	\$ 263,175**
Solid Waste Location	52 Beebe Road, Lander	\$ 893,042**
Youth Camp	Loop Road, Lander	\$ 602,705+

Lander

Facility	Location	Valuation
Balloon Storage Building	1570 Buena Vista Dr	\$ 53,000+
Chamber of Commerce	160 N 1st Street	\$ 126,000+
Child Development Center	100 Pushroot Court	\$ 549,000+
Chlorination Building	74 Deer Valley Road	\$ 19,781+
City Hall	240 Lincoln	\$ 2,914,995+
City Park	City Park	\$ 229,764+
Dillon Park	Leedy Drive	\$ 80,374+
Fire Station	430 Garfield	\$ 946,554
Foot Bridge	1st and Canyon	\$ 46,000+
Golf Course Equip Storage	Buena Vista & Wind River	\$ 156,000+
Golf Pro Shop / Storage	1 Golf Course Dr	\$ 437,000+
Hunt Field Airport	Hunt Field	\$ 1,020,594+
Lander City Cemetery	Cemetery	\$ 83,000+
Lander Community Center	950 Buena Vista Drive	\$ 1,336,375+
Maintenance Bldg	1430 S. 1st Street	\$ 256,969+
Maintenance Garage	130 Garfield	\$ 450,760+
Northside Park	Washington Street	\$ 89,000+
Public Works	125 Buena Vista Dr	\$ 393,470+
Pump House	Hillcrest Dr	\$ 26,262+
Pump House	1st & Fremont	\$ 26,262+
Restrooms	3rd & Fremont	\$ 8,868+
Restrooms & Concession Stand	Baldwin Creek Road	\$ 44,000+
Rodeo Grounds	Rodeo Grounds	\$ 618,511 +
Storage	420 Fremont	\$ 14,211+
Storage / Gazebo	405 Fremont	\$ 325,384 +
Sweetwater St	Sweetwater St	\$ 79,285+
Warming House	Shoshone National Forest	\$ 57,000+
Waste Water Treatment	N 2nd Street	\$ 135,765+
Water tank	2796 Sinks Canyon Rd	\$ 1,381,000+
Water Treatment Plant	Sinks Canyon Road	\$ 8,737,951+
Wortham Meadows Reservoir		

Riverton

Facility	Location	Valuation
Animal Shelter	2450 E. Monroe	\$ 320,035+
Babe Ruth Conc. Stand	1600 W. Sunset	\$ 44,758+
Booster Station/Tank Bldg	305 W. Main	\$ 6,110,768+
City Park Shop	100 N. 10th E.	\$ 158,824+
City Park Skate Park Restroom	104 N. 9th E.	\$ 271,931+
City Hall and Police Dept	816 North Federal	\$ 16,238,635+
City Park Band Shell	901 E. Fremont	\$ 76,863+
City Operations Shop/Bldgs	714 W. Monroe	\$ 2,004,036+
Electrical Vault	4820 Airport Rd.	\$ 494,726+
FCACC Office	223 W. Adams	\$ 635,022+
Fire Station	404 South Broadway	\$ 1,646,509+
Hockey Rink/Storage Bldg	325 N. Smith Rd.	\$ 311,769+
Honeycutt Softball Conc. Stand	205 N. Smith Rd.	\$ 108,259+
Jaycee Park Rests/Main Bldg/ Picnic Shelter	1750 W. Sunset	\$ 101,459+
Jr Football League Conc.	920 Major Ave.	\$ 21,003+
Lions Club Picnic Shelter	703 W. Sunset	\$ 37,546+
Main. Shop/Paint Storage Bldg	714 W. Monroe	\$ 1,680,889+
Pump House H.F. Well	805 Honor Farm Rd.	\$ 64,382+
Pump House #2	623 E. Madison	\$ 63,502+
Pump House #3	12740 U.S. Hwy 26	\$ 64,382+
Pump House #4	409 N. 7th St. E.	\$ 63,502+
Pump House #6	116 W. Lincoln	\$ 63,502+
Pump House #9	115 N. 8th W.	\$ 63,502+
Pump House #11	2815 W. Main	\$ 63,537+
Pump House #13	1606 Aspen	\$ 63,991+
Rein Park Restrooms	1105 W. Monroe	\$ 63,892+
Riverton Airport Facility	4850-4900 Airport Rd.	\$ 13,472,862+
Riverton Airport Tank	4445 US Hwy 26	\$ 1,250,605+
Saban Complex Conc. Stand	305 N. Smith Rd.	\$ 108,259+
Sunset Park Rest/Main Bldg	730 N. 2nd W.	\$ 63,235+
Storage Bldg	227 S. 3rd E.	\$ 27,138+
Storage Bldgs 1 & 2	419 S. 4th W.	\$ 56,595+
Teter Park Restrooms	1101 Elk Dr.	\$ 62,474+
Waste Water Treatment	2600 East Monroe	\$ 9,937,772+
Water Standpipe	810 Riverview Rd.	\$ 39,533+
Water Treatment Plan	1015 S. Hill St.	\$ 10,318,421+
Well House #12	1212 N. Broadway	\$ 63,885+
Well #14/CWC Water Tower	925 N. Hill St.	\$ 635,022+
Well House #15	701 1/2 E. Sunset	\$ 63,502+
Well House #16	920 W. Sunset	\$ 63,502+
Well (no number)	(no address given)	\$ 300,000+
West Main Reservoir	W. Main & Hill St.	\$ 1,258,936+

Shoshoni

Facility	Location	Valuation
Bus Station / Restrooms	516 E 1st - East Park	\$ 173,610 +
City Hall	102 E. 2nd	\$ 457,676+
Library	216 Idaho	\$ 233,063+
Low Income Housing	510 W. 3rd	\$ 1,026,248+
Maintenance Shop and yard	308 E. 3rd	\$ 164,800+
Police Department	214 Idaho	\$ 98,400+
Rifle Range & Storage	1.2 mile south of Shoshoni	\$ 45,471+
Senior Center	209 Main Street	\$ 2,232,924+
Sewer Lift Station	E 6th and Idaho	\$ 32,395+
Town House & Garage	Poison Creek Road	\$ 190,437+
Water Tank	1 mile west of Shoshoni	\$ 141,368+
Water Treatment	S Maple Street East	\$ 275,048+
Well #2	2 miles west of Shoshoni	\$ 68,888+
Well #4	1/2 mile west of Shoshoni	\$ 82,488+
Well #5	1.5 mile west of Shoshoni	\$ 76,685+
Well #6	2 miles west of Shoshoni	\$ 82,694+

Hudson

Facility	Location	Valuation
Town Hall	333 S. Main Street	\$ 239,068
Public Works	256 S. Main Street	\$ 105,509
Water Department	6 th & Oklahoma	\$ 55,025
Sewer Lagoon	Old Hwy 789	\$ 2,000,000
Water Treatment Plant	525 S. 6th	\$ 4,000,000

Dubois

Facility	Location	Valuation
Fire Department (old)	102 Horse Creek Road	\$ 153,229
Fire Department (new)	#8 3rd St.	\$ 1,067,697
Town Hall	712 Meckem	\$ 2,140,398
Town Shop	208 D. Street	\$ 172,580
Headwaters Art & Conference Center	20 Stalnaker	\$ 864,779
Public Restrooms	1st Street	\$ 182,283
Waste Water Treatment Facility		
Waste Water Lift Station		
Water Well and building		
Water Tank		

Pavillion

Facility	Location	Valuation
Town Hall	203 ½ North Main	\$ 90,439+
Water Storage facilities	314 N. Pine 2 tanks located on North Pavillion Road near S & S Wood Products	\$ 28,498+
Maintenance Shop/2 Bldgs		\$ 121,000+
Booster Station		\$ 20,000+

Fire Districts

Facility	Location	Valuation
Atlantic City	46 Dexter Ave, Atlantic City	\$ 290,367
Crowheart	8531 Hwy 26, Crowheart	\$ 255,076
FCFPD Shop	E. Monroe	\$ 299,557
Fremont County Fire Protection District	305 South Smith Road, Riverton	\$ 841,456
Ft. Washakie	385 Old Wind River Hwy	Unknown
Hudson	33 South Main, Hudson	\$ 119,534****
Lander Rural – Station #1	280 Tulip Street, Lander	\$ 233,664
Lander Rural – Station #2	14 Lower North Fork Road, Lander	\$ 172,926
Lysite	30 Wyoming Street, Lysite	\$ 351,242
Midvale – Station #2	10 Lost Wells Circle	\$ 58,493
Midvale- Station #1	1554 Missouri Valley Road	\$ 211,064
Missouri Valley	300 Missouri Valley Road	\$ 1,544,400
Morton/Kinnear	11521 Hwy 26, Kinnear	\$ 1,196,000
North Portal Cottonwood	653 North Portal Road	\$ 121,903
Pavillion	390 West Center Ave, Pavillion	\$ 368,580
Shoshoni	104 2nd Street	\$ 622,859 +

College

Facility	Location	Valuation
Central Wyoming College	2660 Peck, Riverton	\$ 38,879,210
CWC Field Station, Lander	50 Field Station Road, Lander	\$ 112,272

Schools

Facility	Location	Valuation
Ashgrove Elementary	510 N. 1 st Street, Riverton	\$ 882,050
Aspen Park Elementary	1620 E. Sunset Drive, Riverton	\$ 7,911,292
Crowheart School	8434 Hwy 26, Crowheart	\$ 310,495
Dubois Elementary – Middle School	700 N 1 st , Dubois	Incomplete data
Dubois High School	314 Helmer Street, Dubois	Incomplete data
Hudson Elementary	273 S. Ohio, Hudson, Hudson	\$ 1,329,911
Jackson Elementary	720 W. Jackson, Riverton	\$ 4,884,417
Jeffrey City Elementary	375 Bob Adams Ave, Lander	Incomplete data
Lander Valley High School	350 Baldwin Creek Road, Lander	\$ 22,827,369
North Elementary (currently for storage)	626 Washington Street, Lander	\$ 2,439,978
Pathfinder High School	8204 Hwy 789, Lander	Included in Training School
Rendezvous Elementary	413 N. 4 th Street West, Riverton	Included with Jackson School
Riverton High School	2001 W. Sunset Drive, Riverton	\$ 25,897,854
Riverton Middle School	840 Major Ave, Riverton	\$ 1,494,947
Shoshoni Elementary & High School	112 W. 3 rd Street, Shoshoni	\$ 3,357,486
Gannett Peak (South Elementary)	863 Sweetwater, Lander	\$ 2,552,115
Lander Middle School	755 Jefferson, Lander	\$ 7,131,636
Baldwin (West Elementary)	350 Smith Court, Lander	\$ 5,290,542
Wind River Middle – High School & Elementary	1994 Cougar Drive, Pavillion	\$ 12,842,767
School District	112 W. 3 rd Street	\$ 3,357,486

* Construction cost plus land value

** Land value only

*** Combined value of water treatment and public works shop

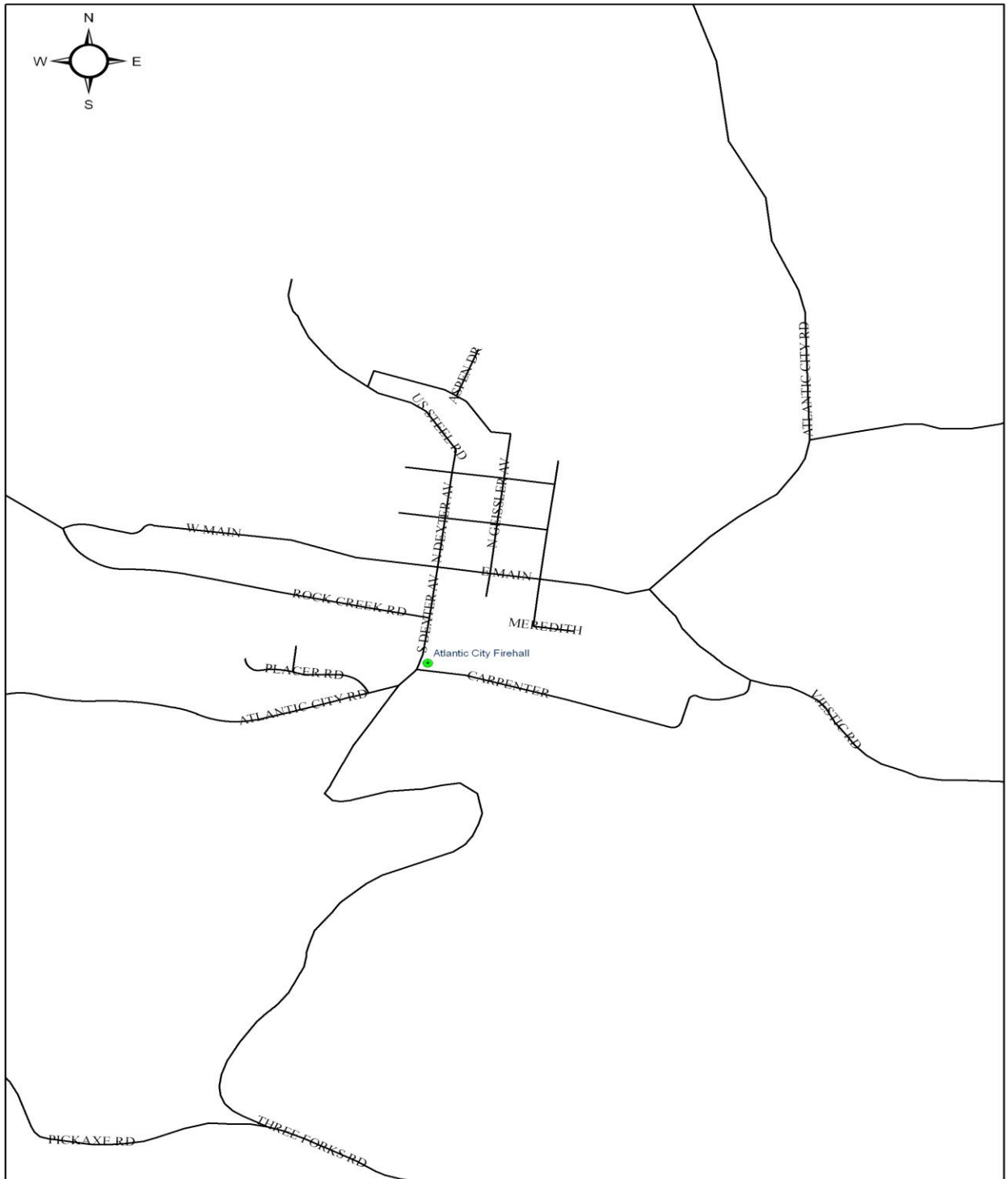
**** Includes City Hall value

+ Value listed on insurance purchased by municipalities

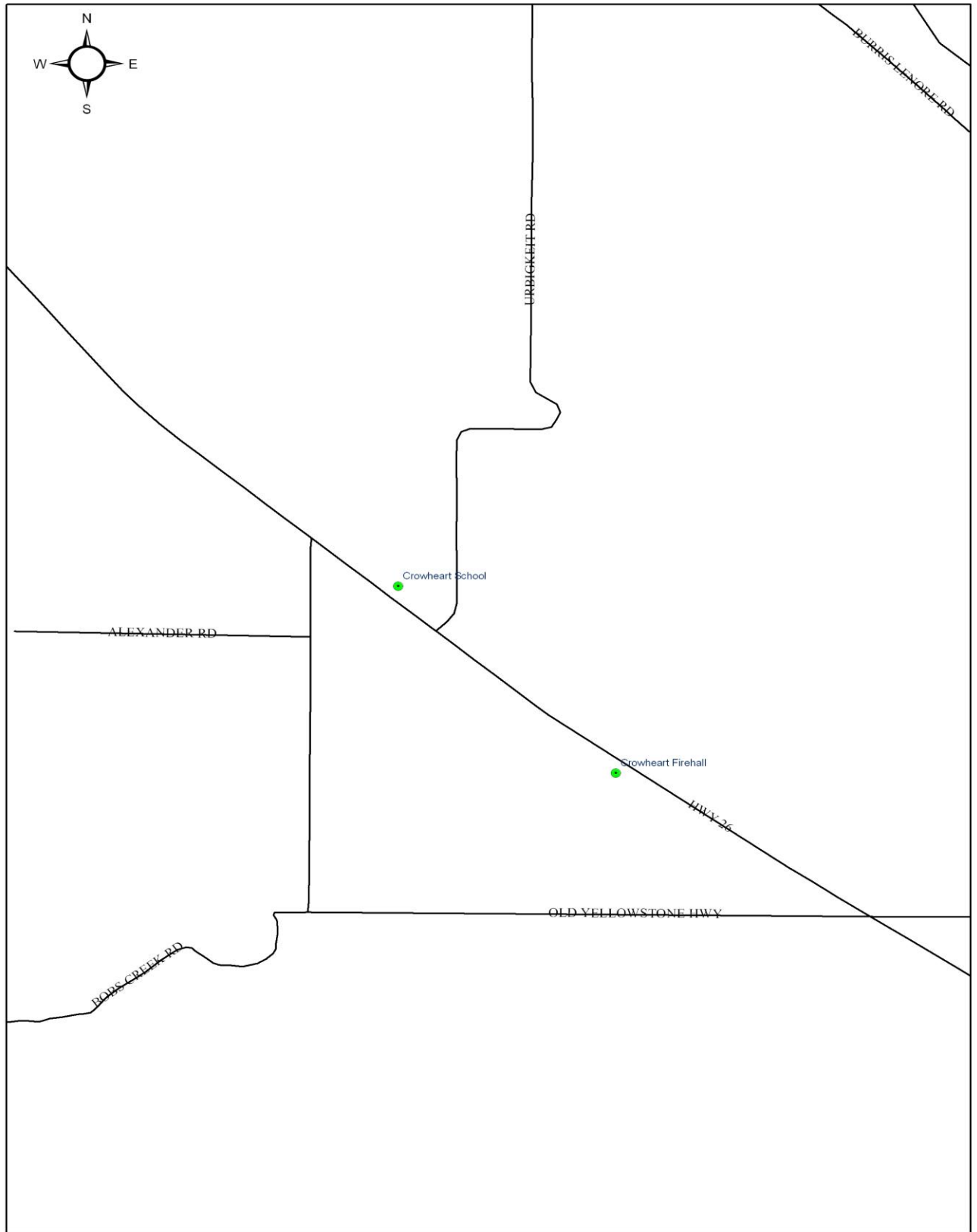
Note: All values are for structural replacement costs, at fair market values, provided by the Fremont County Assessor's Office and Insurance values and does not reflect content and equipment replacement costs.

(Critical Infrastructure will continue to change as the municipalities and elected officials change. Any municipality's governing body may change their definition and considerations of what is "critical infrastructure".)

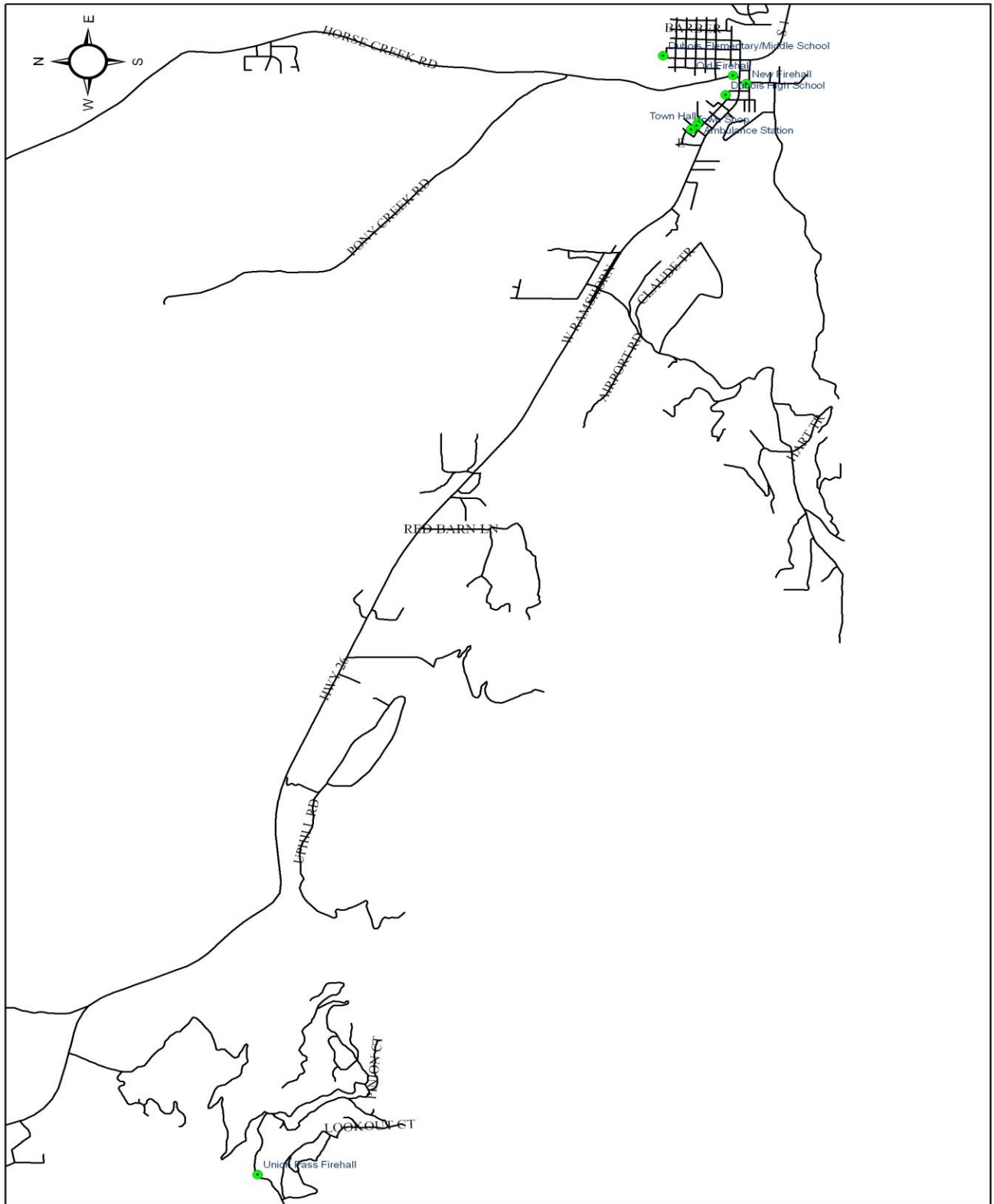
ATLANTIC CITY INFRASTRUCTURE



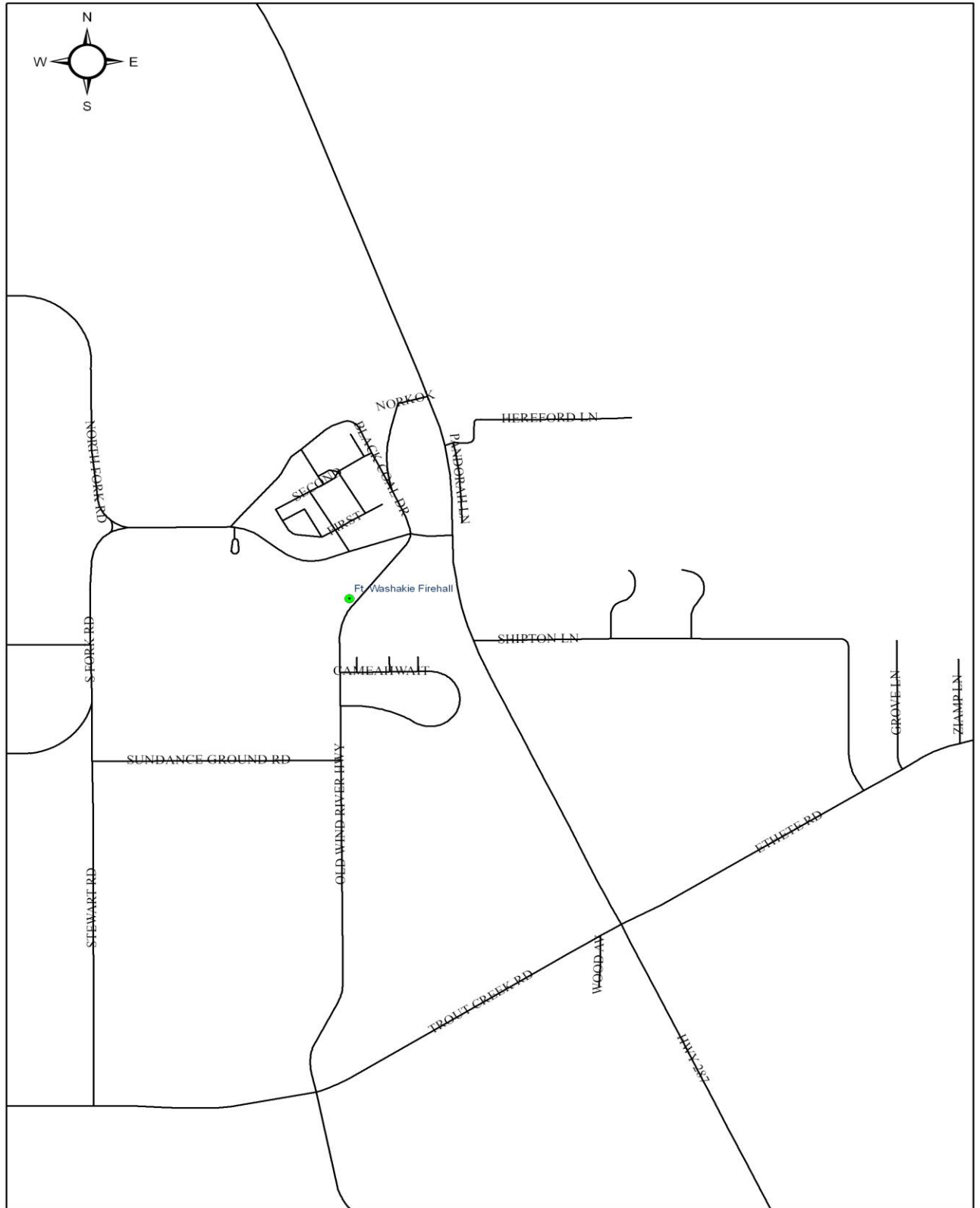
CROWHEART INFRASTRUCTURE



DUBOIS INFRASTRUCTURE



FT. WASHAKIE INFRASTRUCTURE



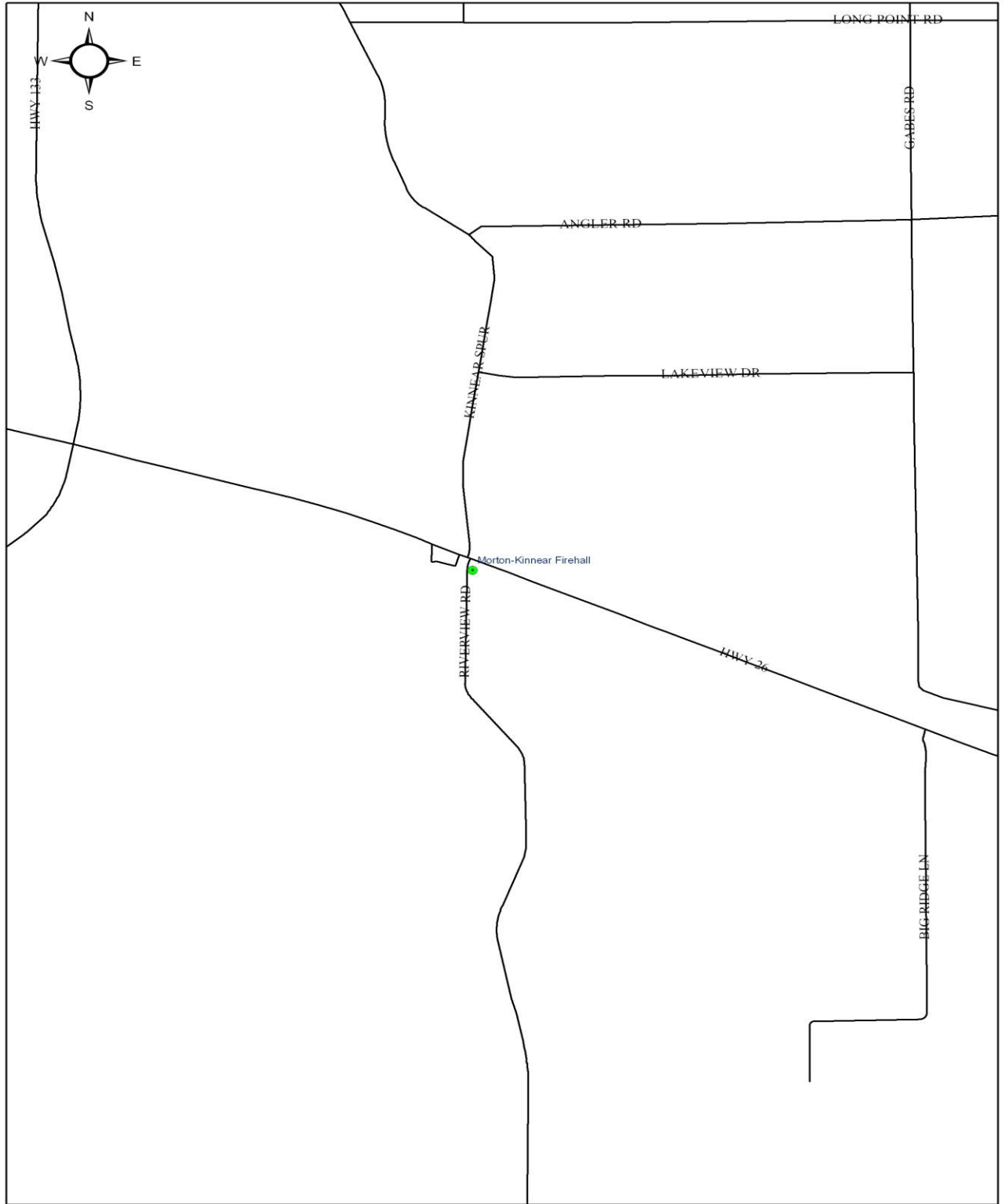
HUDSON INFRASTRUCTURE



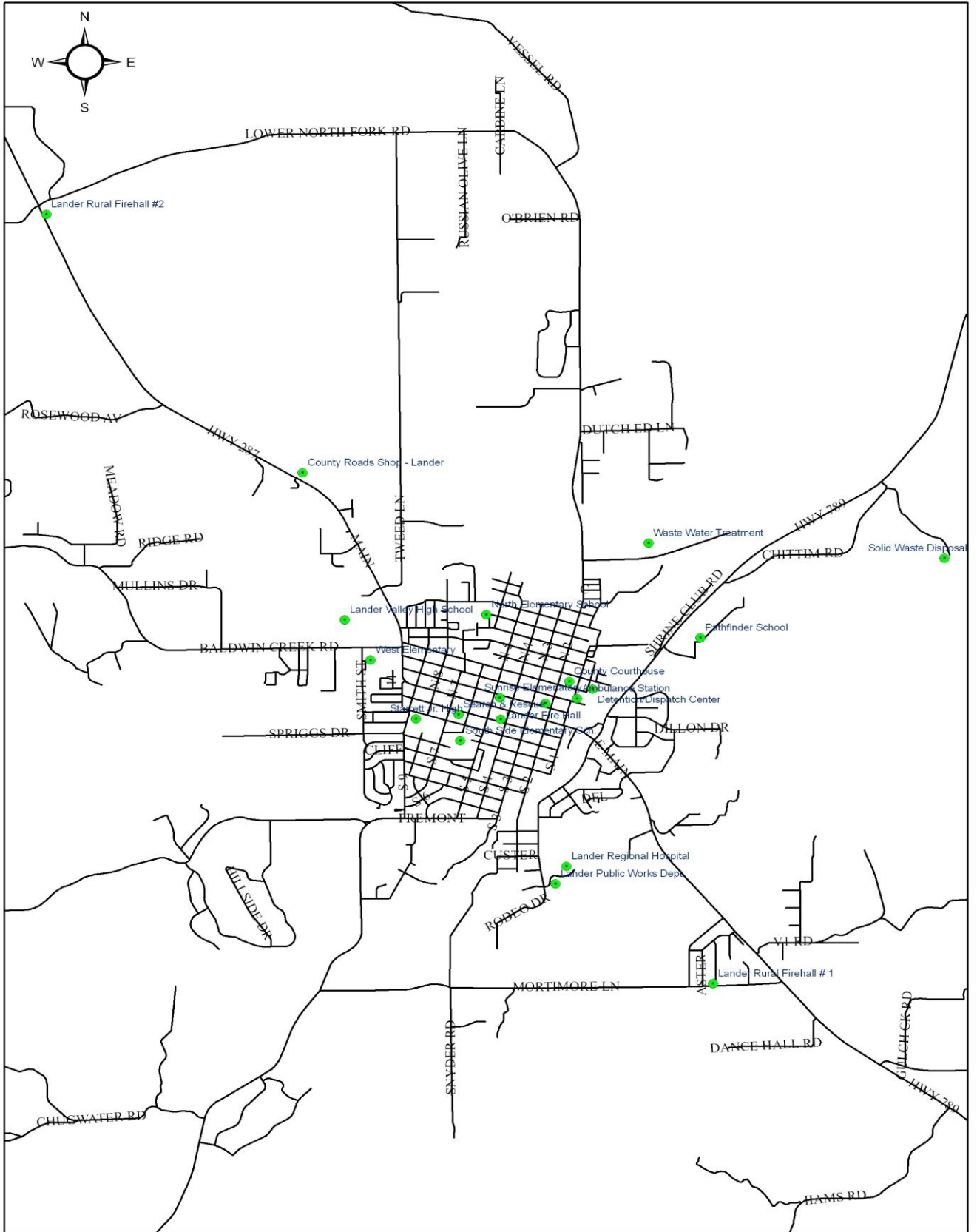
JEFFREY CITY INFRASTRUCTURE



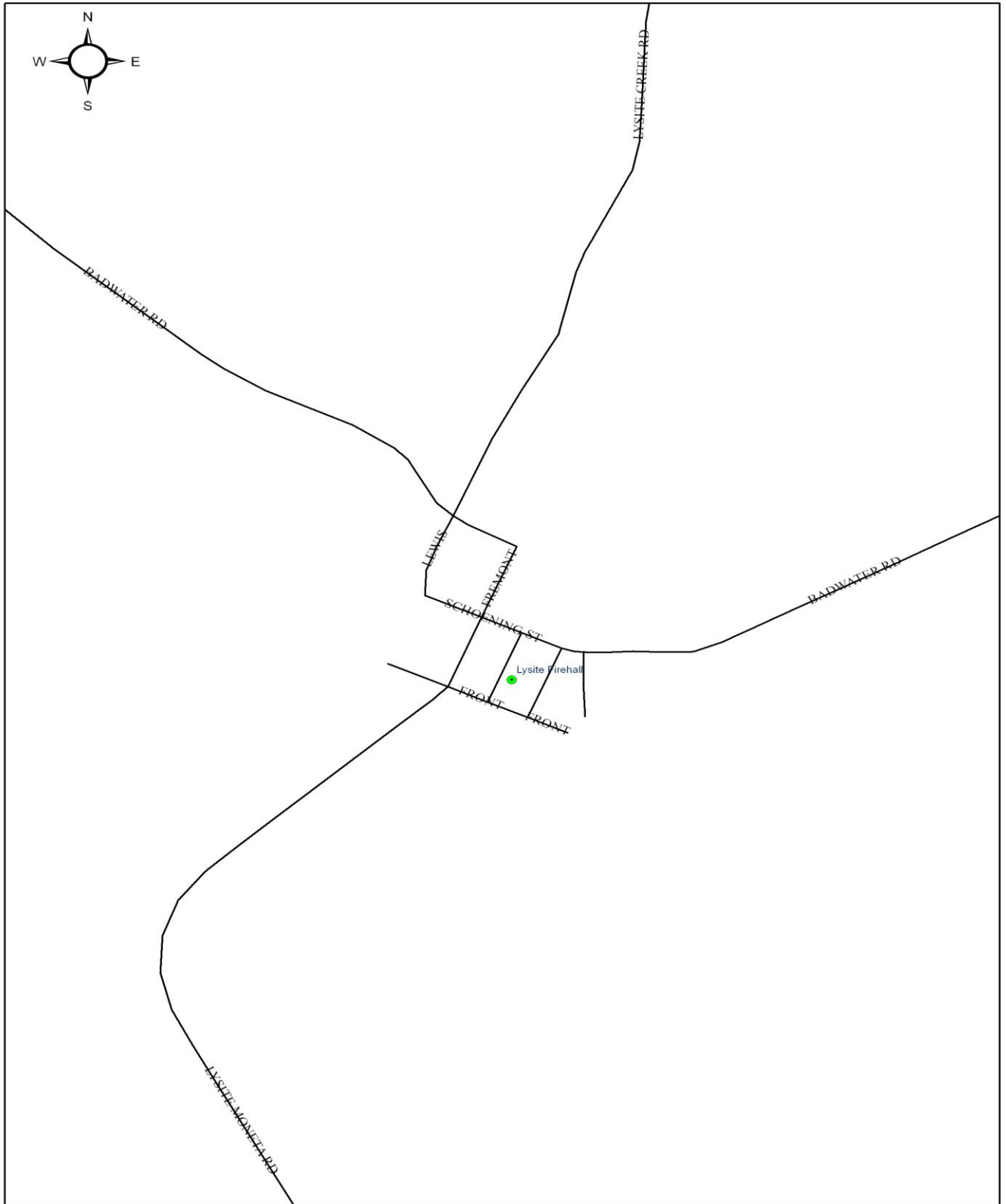
KINNEAR INFRASTRUCTURE



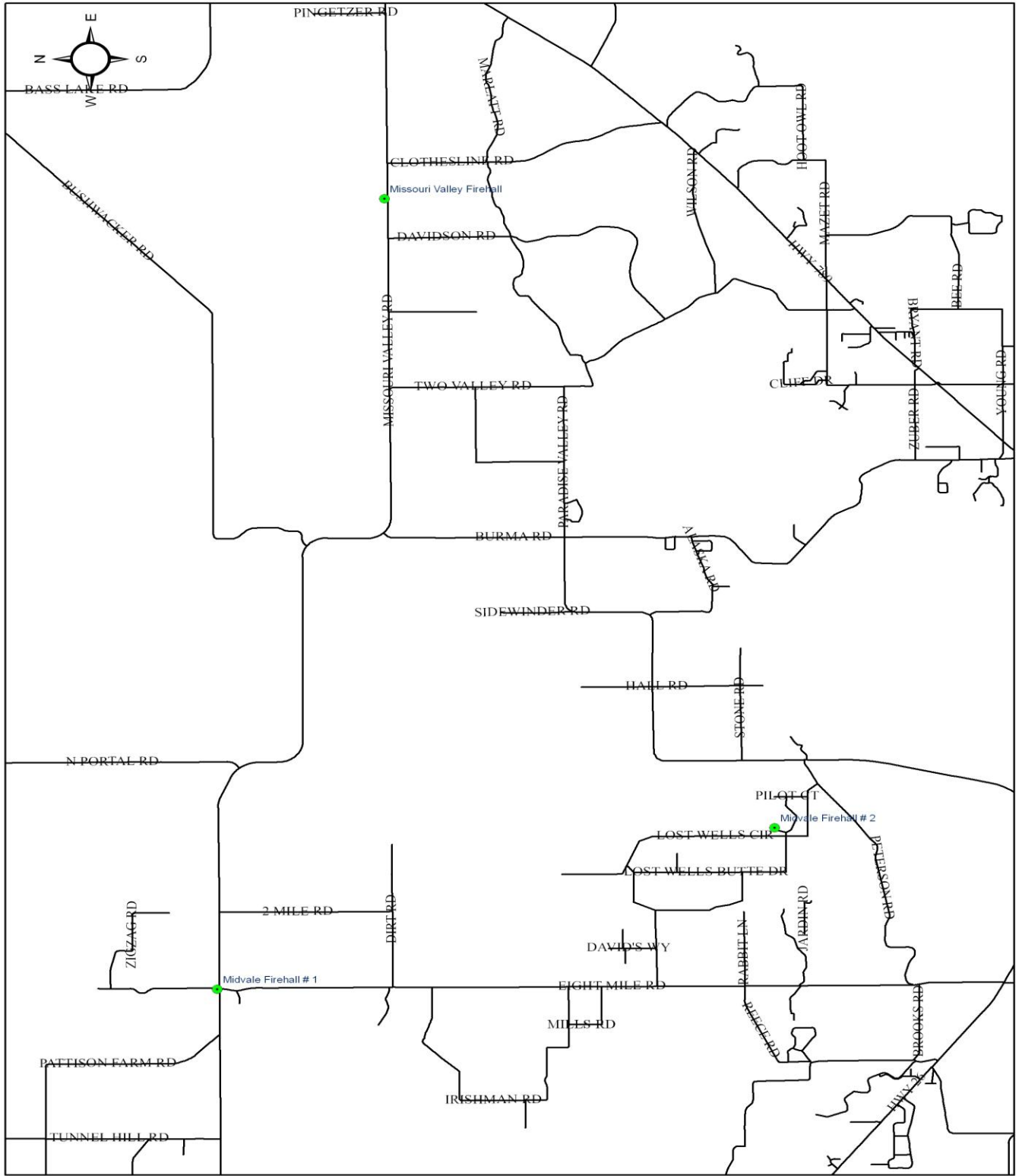
LANDER INFRASTRUCTURE



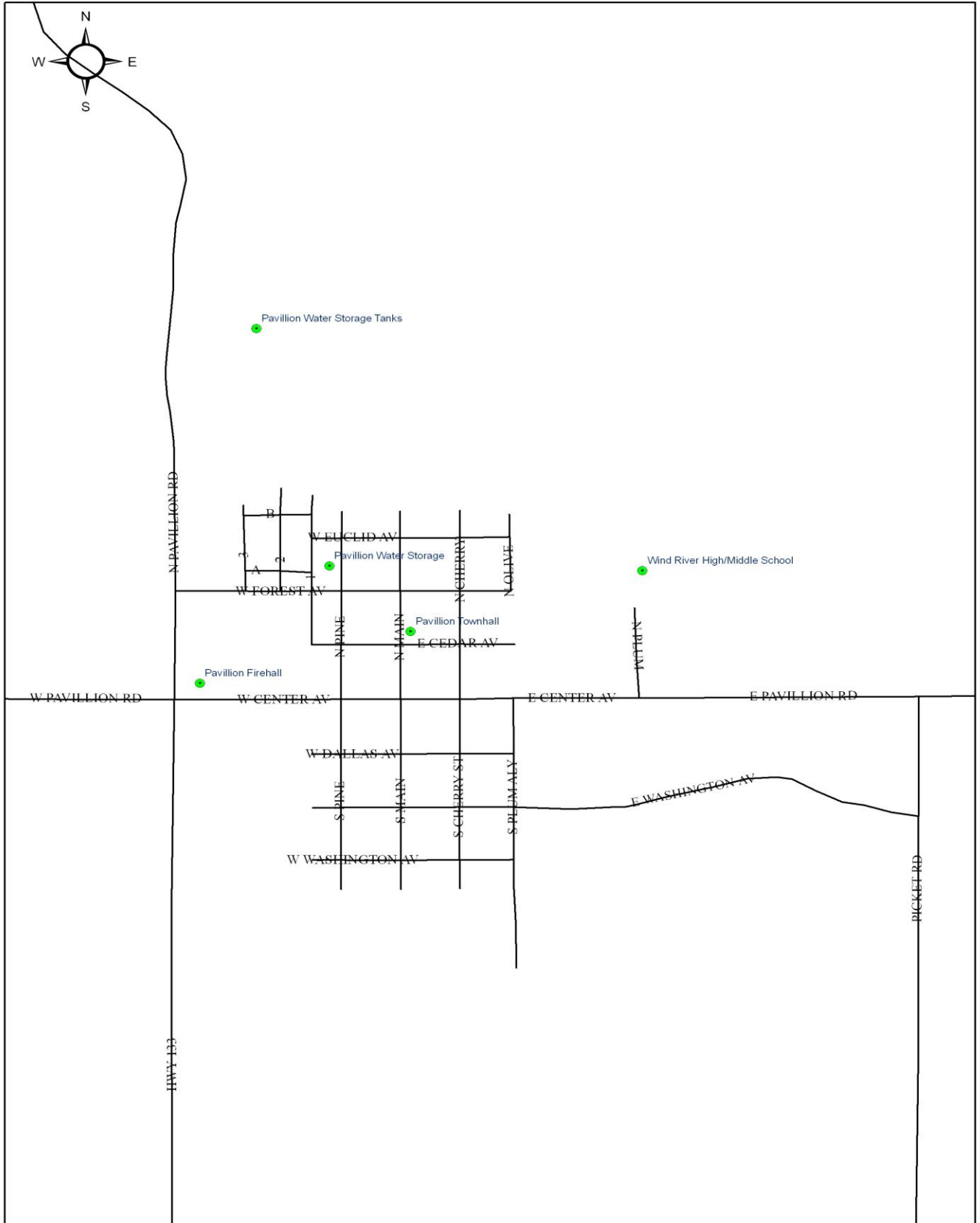
LYSITE INFRASTRUCTURE



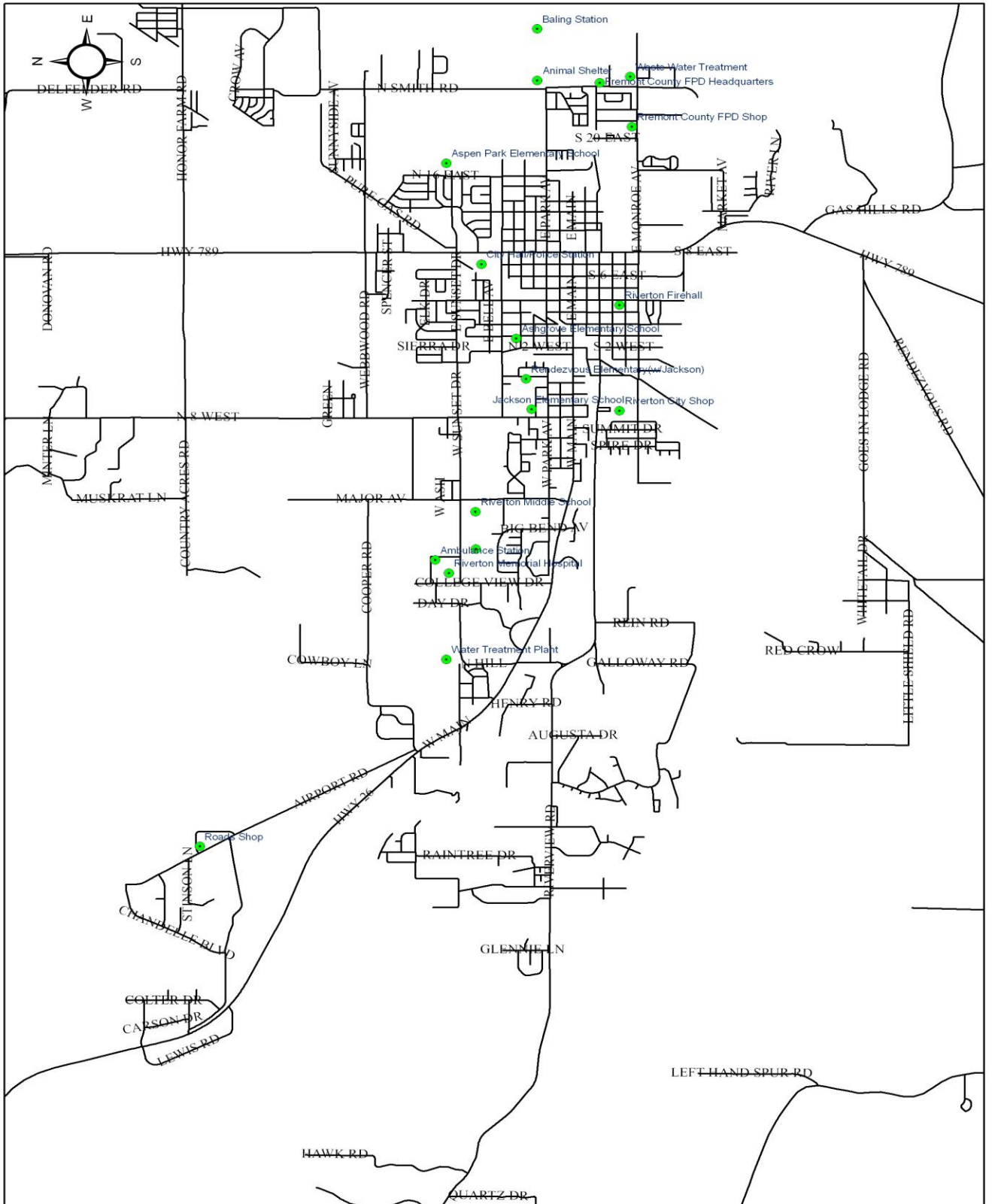
MIDVALE/MISSOURI VALLEY INFRASTRUCTURE



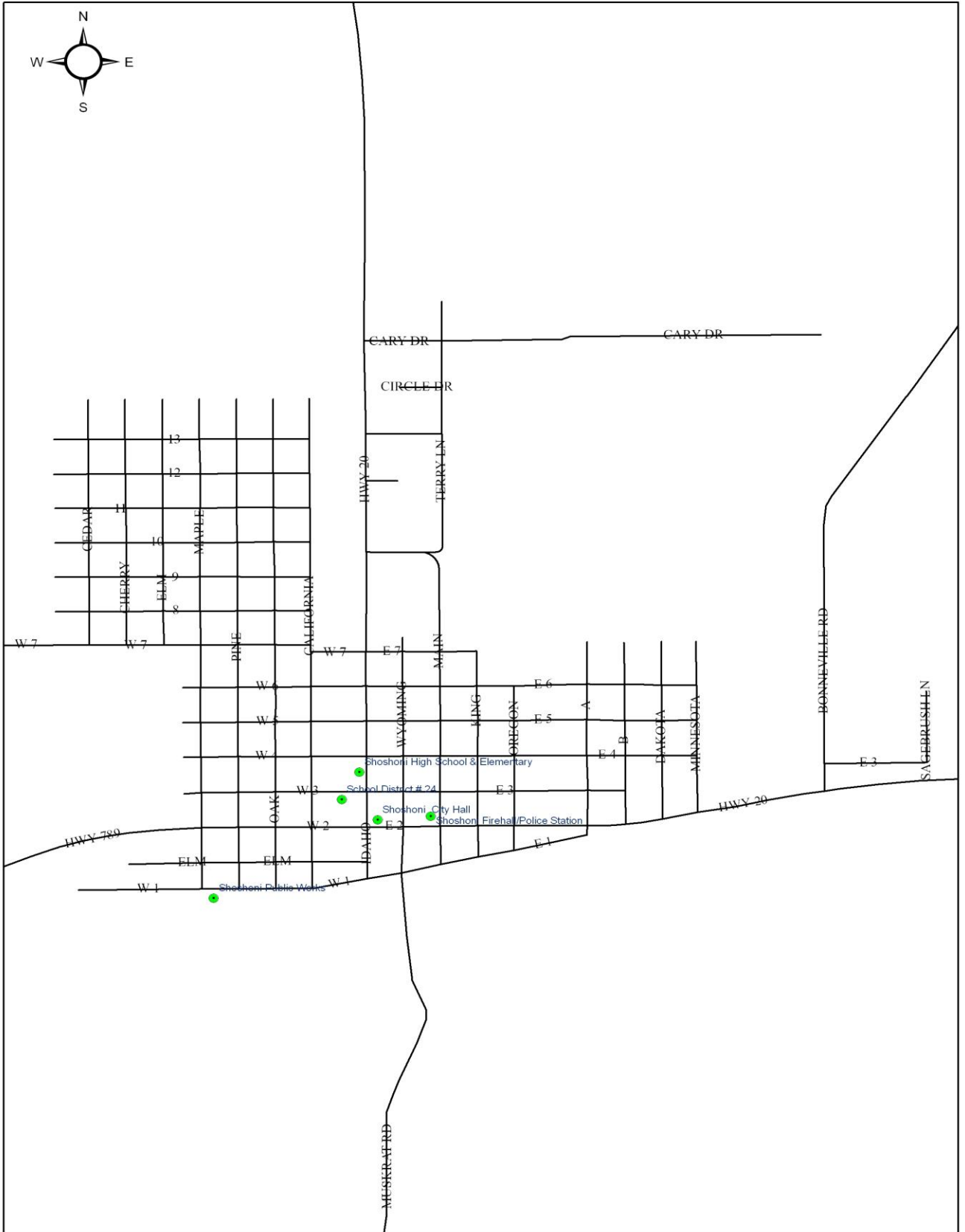
PAVILLION INFRASTRUCTURE



RIVERTON INFRASTRUCTURE



SHOSHONI INFRASTRUCTURE



Values are determined as fair market value of the improvements as determined by Fremont County Assessor's Office. Fair Market Value is the amount of money a well-informed buyer would pay and a well-informed seller would accept for property that has been on the open market for a reasonable amount of time, assuming neither buyer nor seller is acting under pressure.

Because no value is available through Fremont County records for facilities located on the Wind River Indian Reservation that information is noted in the above chart.

Building Trends in Fremont County

Due to the fact that Fremont County, in the unincorporated areas, has no zoning or building codes enforced, use of the information obtained through documentation on subdivisions applications, septic tank applications, and requests for rural addresses processed through the Fremont County Planning Department to show trends of continuing development in the county. Increases in the subdivision applications, septic tank applications and rural addresses show that citizens continue to establish residence in areas not used before. These items (subdivision, septic tank and address applications) are only used in the un-incorporated areas outside the municipalities.

Lander has established building codes, zoning codes, zoning maps and a subdivision checklist, as well as a Board of Adjustment to handle concerns. Riverton is covered by International Building Codes (2006 Edition). Hudson and Pavillion follow county policies. Dubois has zoning in effect for the flood zone areas. Shoshoni building codes are addressed in the Shoshoni Municipal Town Code which was adopted in its entirety on August 12, 1997. The code been update in various sections since its adoption.

The State of Wyoming requires counties to review “subdivisions” to ensure that proposed building sites are adequate for the purpose intended, will not harm adjoining properties and are beneficial additions to the community at large. To achieve these objectives, counties require subdivisions to undergo a public review and meet certain standards, such as for road construction, sewage disposal, water supply, etc.

The Planning Department of Fremont County also administers septic system permits for unincorporated areas of the county and properties inside city limits without access to public sewer services. This is another means of tracking growth. Additionally the Planning Department assigns rural addresses to properties for the unincorporated areas of the county and administers the Flood Plain Program for the county.

Fremont County, Wyoming does not have a county-wide zoning ordinance that applies outside of any incorporated boundary. Fremont County has not adopted any form of building code (except for septic systems, see below). There are certain types of zoning and or building codes that may apply to specific areas within Fremont County. They are:

1. The Wind River Reservation is zoned Residential/Agricultural. Any other use must obtain a variance from the Joint Tribal Council. Administered by the Shoshone and Arapahoe Joint Tribal.
2. South Pass City is subject to a historical zoning resolution. The exterior appearance of all buildings must comply with the standards of the zoning regulations - administered by the Fremont County Planning and Rural Addressing Department.

3. Areas near Hudson and Lander are designated as official flood zones by the Federal Emergency Management Agency and are subject to the Fremont County Flood Plain Zoning Resolution - administered by the Fremont County Planning and Rural Addressing Department.
4. All new small wastewater (septic) systems that generate less than 2,000 gallons per day of sewage must be approved and permitted by the Fremont County Planning and Rural Addressing Department.
5. All cities and towns have joint subdivision review with the county within one mile of Municipal boundaries.
6. Wyoming Statutes require that the State Fire Marshal review and approve any new plans or plans for remodeling prior to beginning any work for:
 - Buildings and structures owned/leased by governmental entities.
 - Buildings for general public access which exceed one story and/or 5,000 sq ft.
 - Buildings used for child care centers for more than 11 children.
 - Buildings used as public bars, public lounges, restaurants, night clubs, lodge halls theaters, churches or public meeting places regardless of size.

Source: <http://fremontcountywy.org/planning/>

Future Building Trends in County

At this time no method has been determined to estimate types and numbers of future buildings, infrastructure or critical facilities. None of these items could be assessed using the subdivision, septic tank applications or the requests for new rural address applications available at this time. Wyoming, Fremont County especially, is slow growing when it comes to new construction. This may be reflective of the fact Fremont County is a "boom-and-bust" county and the transient population and lack of tax payer backing may prevent developers from investing here.

The following figures show the requests for septic tank permits, rural address requests and subdivision applications in the Fremont County Planning Department. At this time, this is the best method available to this agency for tracking of future building trends (this reflects more residential construction than critical infrastructure building.) This report is given to the Fremont County Commissioners and Fremont County Planning Commission on a monthly basis, and addresses the permit requests which came into the Planning Department for the period of January 1, 2011 through January 31, 2011.

This will give an overview from the period between January 1999 to December 2010 in the requests made to the Planning Department for permits. The number of applications will vary with the month during the year due to weather conditions and the ability of citizens to begin property development or replace septic system concerns.

All areas of Fremont County face one or more hazards defined in the Hazards Rankings chart on page 5.17. Future construction on infrastructure will likely place the building in the flood plain, earthquake zone (the whole of Fremont County) and wildland urban interface areas. New construction in Riverton and Lander would place buildings in the dam failure zone as well. Any such construction will have to be added to this mitigation plan for the next update.

This information shows earlier trends in construction in Fremont County beginning in 1999.

Applications for Permits 1999-2006

<u>Subdivision Admin:</u>	1999	2000	2001	2002	2003	2004	2005	2006
Land Sale Consultations	65	95	128	77	59	53	104	91
Plat Review	7	10	3	33	23	27	32	67
Sub. Consultations	20	23	20	46	59	46	126	167
Pre-review Inspections	7	2	2	26	59	21	18	55
Subdivision Violations	3	1	1	0	0	1	1	0

Septic Admin.

Permits Issued	119	128	111	110	127	141	153	198
Inspections	111	94	105	86	75	80	178	165
Office Consults.	136	134	308	457	563	601	1,021	1,049
On-Site Consults.	71	78	83	121	139	164	291	220
App. Searches	35	39	81	112	107	107	93	81
Violations	11	12	14	22	45	20	37	37

Rural Addressing

Address Verifications	71	428	236	375	359	358	159	119
New Address Req.	191	206	152	135	132	169	235	338
Addresses Posted or Mailed	128	224	153	147	157	169	602	113
Map Requests	25	54	44	231	69	163	41	88

Other Projects and Requests through the Planning Department:

Review and update county regulations as needed: Subdivision Regulations, Small Wastewater Regulations and Floodplain Regulations.

Prepared by the Fremont County Planning Department

January 1, 2011 through January 31, 2011

<u>SUBDIVISION REVIEW</u>	<u>2005</u>	<u>2006</u>	<u>2007</u>	<u>2008</u>	<u>2009</u>	<u>2010</u>	<u>This Period</u>	<u>2011 Totals</u>
Land Sale Consultations	104	91	86	55	257	1772	123	123
Subdivision Consultations	126	167	164	93	103	45	5	5
New Subdivision Files	32	67	56	42	38	24	2	2
Pending Subdivision Files				3	3	6		
Planning Commission Review	24	64	57	44	34	32	4	4
County Commissioner Review	17	46	40	22	22	17	0	0
Plat Vacations	0	0	0	1	2	3	0	0
On-Site Inspections	18	55	60	42	22	17	4	4
Subdivision Violations	1	0	0	2	2	1		
<u>SEPTIC ADMINISTRATION</u>	<u>2005</u>	<u>2006</u>	<u>2007</u>	<u>2008</u>	<u>2009</u>	<u>2010</u>	<u>This Period</u>	<u>2011 Totals</u>
Permit Applications	153	198	204	136	82	129	0	0
Inspections	178	165	196	139	105	130	0	0
Office Consultations	1,021	1,049	650	793	547	733	4	4
On-Site consultations	291	220	164	87	65	115	2	2
Application Searches	93	81	56	83	133	153	3	3
<u>RURAL ADDRESSING</u>								
Address Verifications	159	119	346	312	51	307	3	3
New Address Requests	235	338	209	147	188	125	5	5
New Addresses Posted or Mailed	602	113	134	99	45	65	4	4
Map & CD Requests maps 4, cd's 0	41	88	113	179	56	194	4	4
Address Updates				61	61	30	1	1

Prepared January 31, 2011 by Planning Department Staff

Property Assessment

The following information is gathered from the Fremont County Assessor's office to show mandates placed on the Assessor's office, terms, explanations and definitions and statements to assist the citizen in understanding the taxation in Fremont County, and allows us to understand how values are determined.

"As the Assessor of Fremont County, it is my responsibility to discover, list and determine fair market value all taxable property (real property and personal property) within the county as required by the Wyoming Constitution and the legislature.

Wyoming Statute 39-13-103 states *"All taxable property shall be annually listed, valued and assessed for taxation in the county in which it is located and in the name of the owner of the property on January 1"*

To accomplish this, we use industry accepted mass appraisal procedures and methodologies. Each year property characteristics and sales information is gathered and analyzed to determine the estimated fair market value of all property.

The County Assessor does not establish the dollar amount of taxes nor does the Assessor bill or collect taxes. The voting taxpayers, county commissioners, state limitations and assessed values determine the tax rate for each of the tax districts in Fremont County. The County Treasurer is responsible for billing and collecting taxes.

The Assessor strives to value properties accurately, fairly, and uniformly according to guidelines from Wyoming Statutes and the Wyoming Department of Revenue.

The goal of the Assessor's Office is to assist the taxpayer in an efficient, knowledgeable and friendly manner. We strive to provide accurate information and will always make the service we provide to the citizens of Fremont County our top priority."

Source: Tara Berg, Assessor from <http://fremontcountywy.org/county-assessor/>

Property Assessment Terms

Property assessment and taxation is a complex subject. Knowing the terminology will help you understand the assessment process. The Fremont County Assessor's office is dedicated to educating the public about procedures and methods used to be in compliance with State of Wyoming statutes, rules and regulations.

1) **Fair Market Value** is the amount of money a well-informed buyer would pay and a well-informed seller would accept for property that has been on the open market for a reasonable.

2) **Assessed Value** is the taxable value of each property. This value is calculated by multiplying the fair market value by the level of assessment.

3) Level of Assessment is the percentage of the fair market value that determines assessed value. The current level of assessment for industrial use properties is 11.5%; all other properties are at 9.5%. The level of assessment is set by the legislature and is subject to change.

4) Mill literally, one thousandth. For tax purposes: \$1 of taxes for every \$1,000 of assessed value.

5) Mill Levy is the number of dollars in taxes that a property owner must pay for every \$1,000 of assessed value. This amount is based on budget requests from various taxing entities.

6) Assessment Date under Wyoming Statute is January 1st of each tax year. All properties are valued, assessed and taxed to the owner of record on this date.

7) Mass Appraisal is the process of valuing a universe of properties as of a given date, utilizing standard methodology, employing common data, and allowing for statistical testing. The goal of mass appraisal is the same as fee appraisal: to develop a reasonable estimate of fair market value.

8) CAMA (Computer Assisted Mass Appraisal) is a computer system developed by the State of Wyoming to perform three functions:

1. Warehouse information collected by the assessor's office staff. Information such as ownership, location, size, use, physical characteristics, condition, and information must be continually updated.

2. CAMA is like a complex calculator. It contains equations, cost and depreciation tables which automate standard appraisal methods to estimate fair market value.

3. Quality control features such as reports generated using various parameters.

9) Real Property is defined as land and improvements (buildings and structures) permanently fixed to the land.

10) Personal Property includes material assets that are not fixed to the land: furniture, machinery or equipment, transportable homes.

11) Statement of Consideration is a document, which provides sales information that must be used in addition to other information to determine current market value. The seller, buyer or agent completes the document at the time of a property transfer. Information is confidential and not public record. Property owners may review the sales information used to determine the value of their property. The SOC review period is only during the 30-day appeal period and the property owner may not further disclose the sales information to other persons or property owners. Sales information may be introduced to the County Board of Equalization during a formal appeal, but actions must be taken to prevent its indiscriminate disclosure.

12) Neighborhood Boundaries are developed by the assessor based on physical, economical, governmental, or social factors. These neighborhood boundaries are used when sales studies are done.

13) Tax Districts are the geographic area on which a taxing entity has the right to levy taxes. These entities include school districts, counties, cities, water or sewer districts, fire districts or other specially formed districts as designated by state statute.

14) Tax Base is the total value of property against which the property tax is levied.

15) Property Tax Appraiser is the designation given to those persons who have completed the education and training mandated by the State of Wyoming for anyone making a valuation judgment used as a basis for property taxation.

Source: <http://fremontcountywy.org/county-assessor/>

Property Value Assessments as of 2010 Values

Fremont County has 5,901 census blocks located in the county borders. Of those census blocks 1,946 census blocks have improvements on the property. Improvements may be any development or construction from a small pump shed to a primary residential structure. The county yields the information that 33% of the census blocks in Fremont County have citizens living in the area. The value listed in the property addresses value of the improvements alone. No value is assessed to the land.

Total value for all structures as of 2010 in Fremont County are \$1,953,224,631.61. Individual census blocks property value is shown in the following tables. No reference map of census blocks have been included for reference and location of each census block due to the size of the county and the inability to print the reference map in a readable size. Further information is available on each census block location in the county through Fremont County Assessor's Office. Values presented are as of 2010 assessments.

Percentage of Values of Property Loss

Potential dollar losses to an area could be determined by the percentage of damage to the area, i.e. 10%, 50% or 100% loss and taking that percentage of loss against the structural value in the specific census block to determine structural loss value.

Census Block	560130001001085
Value of	\$ 1,118,503

10% damage in this census block would equal \$ 111,850.30 value loss to structures.

50% damage in this census block would equal \$ 559,251.50 value loss to structures.

100% damage in this census block would equal \$1,118,503 value loss to structures.

This concept of figuring damage would at least give an approximate value in dollars to the structures lost.

**FREMONT COUNTY ASSESSOR
CENSUS BLOCKS 2010**

Census Block	Exposure Value (Structure)		
560130001001000	204120	560130001001081	180733
560130001001001	4113836	560130001001082	615913
560130001001002	1944915	560130001001083	253486
560130001001010	1369771	560130001001084	1285299
560130001001011	430765	560130001001085	1118503
560130001001015	1074822	560130001001086	468819
560130001001016	1938718	560130001001087	788190
560130001001029	3043390	560130001001088	957573
560130001001030	101230	560130001001089	353530
560130001001034	1124606	560130001001090	642472
560130001001036	519875	560130001001091	465172
560130001001037	487624	560130001001092	792549
560130001001039	213938	560130001001093	605734
560130001001042	6777321	560130001001094	779458
560130001001043	3752562	560130001001095	221372
560130001001044	6993112	560130001001096	415417
560130001001045	5456982	560130001001097	955846
560130001001046	2382693	560130001001098	537358
560130001001048	1015344	560130001001099	1177515
560130001001049	1471394	560130001001100	1152788
560130001001051	2175607	560130001001101	468019
560130001001052	3180660	560130001001102	1653391
560130001001053	1587470	560130001001103	1094865
560130001001054	603434	560130001001104	557500
560130001001055	26073	560130001001105	2034187
560130001001056	81595	560130001001106	2501599
560130001001058	1689178	560130001001110	153063
560130001001059	1030016	560130001001111	299862
560130001001060	660409	560130001001112	387649
560130001001061	1094560	560130001002000	3915423
560130001001062	711744	560130001002001	494079
560130001001063	702105	560130001002002	3499825
560130001001066	123	560130001002003	141471
560130001001068	254590	560130001002005	9172950
560130001001070	121326	560130001002006	1291929
560130001001071	807862	560130001002007	1412220
560130001001072	714601	560130001002010	1451163
560130001001073	1003803	560130001002011	12219
560130001001074	1004044	560130001002015	94582
560130001001075	331217	560130001002016	1538098
560130001001076	630465	560130001002017	15919462
560130001001077	379561	560130001002018	333900
560130001001078	323343	560130001002019	150885
560130001001079	285388	560130001002020	5178302
560130001001080	369035	560130001002021	1353247
		560130001002022	43589

Census Block	Exposure Value (Structure)		
560130001002023	977451	560130002001002	577729
560130001002025	112411	560130002001003	648102
560130001002026	339089	560130002001004	526850
560130001002028	219274	560130002001005	761330
560130001002029	417820	560130002001006	757761
560130001002030	301782	560130002001007	1976229
560130001002031	1353834	560130002001008	2052951
560130001002032	856556	560130002001009	798219
560130001002033	292372	560130002001010	4148295
560130001002034	192185	560130002001011	1879632
560130001002035	65052	560130002001012	1276161
560130001002036	538942	560130002001013	3053333
560130001002037	688877	560130002001014	3481961
560130001002038	440324	560130002001015	1960672
560130001002039	849886	560130002001016	1640009
560130001002040	1354265	560130002001017	681358
560130001002041	3577672	560130002001018	896882
560130001002042	1422249	560130002001019	1312716
560130001002043	1538396	560130002001020	1389763
560130001002044	2713930	560130002001021	1324199
560130001002045	2494242	560130002001022	1594930
560130001002046	455869	560130002001023	2664613
560130001002047	3304685	560130002001024	297379
560130001002050	172258	560130002001025	688236
560130001002051	817753	560130002001026	1752175
560130001002052	1439066	560130002001027	828237
560130001002053	1696398	560130002001028	992388
560130001002054	735640	560130002001029	721473
560130001002055	407500	560130002001030	825072
560130001002056	1486317	560130002001031	4598333
560130001002057	1589494	560130002001032	2006681
560130001002058	181576	560130002001033	1068043
560130001002059	3919923	560130002001034	1725058
560130001002060	1151617	560130002001035	1222094
560130001002061	2765405	560130002001036	947983
560130001002062	1051665	560130002001037	1736641
560130001002063	1639226	560130002001038	3758745
560130001002064	1901864	560130002001039	418328
560130001002065	1192952	560130002001040	1166226
560130001002066	1413840	560130002001041	2186968
560130001002067	460936	560130002001042	1896700
560130001002068	1574519	560130002001043	1911634
560130001002069	1767306	560130002001044	2450122
560130001002070	2496159	560130002001045	1568953
560130001002071	2225820	560130002001046	252782
560130001002072	418003	560130002001047	3278229
560130001002073	497407	560130002001048	1602122
560130001002074	1859486	560130002001049	1974024
560130002001000	1833801	560130002001050	968924
560130002001001	425142	560130002001051	2800573
		560130002001052	1911127

Census Block	Exposure Value (Structure)		
560130002001053	2999869	560130002002034	7552233
560130002001054	251741	560130002002035	596642
560130002001056	432169	560130002002036	3741274
560130002001057	1980761	560130002002037	4886723
560130002001058	664565	560130002002038	4139915
560130002001059	1654673	560130002002039	4638516
560130002001060	543325	560130002002040	8304351
560130002001061	2437341	560130002002042	378983
560130002001062	1332647	560130002002043	4823805
560130002001063	2404027	560130002002044	3902055
560130002001064	4759111	560130002002045	3528852
560130002001065	866187	560130002002046	4248020
560130002001066	953482	560130002002047	4450932
560130002001067	2015282	560130002002049	415642
560130002001068	830398	560130002002050	191926
560130002001069	1327077	560130002002053	4118517
560130002001070	605254	560130002002055	256145
560130002001071	3570096	560130002002057	244246
560130002001072	2445837	560130002002058	737480
560130002001073	1833462	560130002002059	323231
560130002002000	1063140	560130002002060	342961
560130002002001	666859	560130002002062	302426
560130002002002	986473	560130002002063	1322420
560130002002003	1774192	560130002002064	1122328
560130002002004	1343741	560130002002065	1186788
560130002002005	10228383	560130003001000	156489
560130002002009	2550623	560130003001002	263432
560130002002010	284704	560130003001003	165760
560130002002011	22822614	560130003001005	1205312
560130002002012	638566	560130003001010	793192
560130002002013	211762	560130003001016	55354
560130002002014	3257156	560130003001022	102153
560130002002015	1406758	560130003001025	148330
560130002002016	2984120	560130003001026	49550
560130002002017	3040102	560130003001027	209635
560130002002018	909334	560130003001028	156489
560130002002019	3103710	560130003001032	102338
560130002002020	1744198	560130003001035	78794
560130002002021	543160	560130003001036	197485
560130002002022	2037645	560130003001038	277811
560130002002023	646714	560130003001041	156489
560130002002024	1584369	560130003001042	309392
560130002002025	2012810	560130003001045	627047
560130002002026	2264631	560130003001054	1024650
560130002002027	2985346	560130003001056	179896
560130002002028	3350126	560130003001057	174244
560130002002029	1753892	560130003001058	64086
560130002002030	1502100	560130003001059	558018
560130002002031	745018	560130003001063	627619
560130002002032	713655	560130003001064	309392
		560130003001066	108708

Census Block	Exposure Value (Structure)		
560130003001068	229783	560130003001183	696803
560130003001069	248200	560130003001184	318527
560130003001070	128373	560130003001185	309440
560130003001071	295301	560130003001186	246583
560130003001073	120811	560130003001187	104430
560130003001076	320008	560130003001188	411824
560130003001078	229208	560130003001189	221570
560130003001080	230329	560130003001190	393422
560130003001082	229208	560130003001193	166259
560130003001084	229208	560130003001194	39808
560130003001085	229208	560130003001195	212615
560130003001088	48354	560130003001196	288892
560130003001091	48354	560130003001198	375481
560130003001095	106753	560130003001200	985430
560130003001097	106753	560130003001201	482806
560130003001098	282374	560130003001202	469257
560130003001100	229208	560130003001203	149749
560130003001101	936598	560130003001204	70476
560130003001103	1145	560130003001205	476291
560130003001104	12933	560130003001206	230206
560130003001105	35596	560130003001207	1598
560130003001106	509	560130003001208	119063
560130003001111	67908	560130003001209	182555
560130003001112	836629	560130003001210	146358
560130003001113	26888	560130003001212	30267
560130003001114	392940	560130003001213	766961
560130003001115	2727427	560130003001214	113800
560130003001120	156023	560130003001216	109467
560130003001152	252100	560130003001218	14426
560130003001153	116729	560130003001222	16647
560130003001154	424445	560130003001227	14426
560130003001155	940190	560130003001228	3027
560130003001156	680815	560130003001231	3027
560130003001157	698726	560130003001235	62205
560130003001158	764678	560130003001248	62205
560130003001165	731740	560130003001250	5231
560130003001168	26277	560130003001252	14426
560130003001169	265044	560130003001253	14426
560130003001170	342355	560130003001259	106753
560130003001172	30940	560130003001261	106753
560130003001173	162866	560130003001262	168958
560130003001174	671495	560130003001266	106753
560130003001175	605183	560130003001271	5231
560130003001176	774344	560130003001275	468006
560130003001177	17438	560130003001286	17500
560130003001178	191739	560130003001293	5231
560130003001179	295728	560130003001295	62205
560130003001180	32031	560130003001298	106753
560130003001181	135790	560130003001302	106753
560130003001182	281241	560130003001303	335961
		560130003001305	48354

Census Block	Exposure Value (Structure)		
560130003001307	106753	560130003001536	10500
560130003001308	106753	560130003001537	1400
560130003001314	127027	560130003001540	6601
560130003001316	139019	560130003001541	2700
560130003001319	372799	560130003001543	38600
560130003001326	106753	560130003001544	1500
560130003001327	106753	560130003001545	39604
560130003001329	168958	560130003001546	2700
560130003001332	106753	560130003001547	4530
560130003001336	2099	560130003001548	32856
560130003001337	2099	560130003001550	41800
560130003001340	2099	560130003001551	21127
560130003001342	2099	560130003001557	1366
560130003001346	1201	560130003001558	26501
560130003001347	2099	560130003001559	600
560130003001348	2099	560130003001560	332658
560130003001351	65000	560130003001561	405652
560130003001362	2579	560130003001564	28700
560130003001364	2579	560130003001567	86800
560130003001372	62205	560130003001570	75952
560130003001374	317986	560130003001575	35800
560130003001380	39552	560130003001578	220210
560130003001395	33600	560130003001580	124899
560130003001397	33600	560130003001581	147199
560130003001417	65000	560130003001584	414200
560130003001431	987229	560130003001590	46500
560130003001455	76700	560130003001593	22300
560130003001461	202499	560130003001594	2500
560130003001464	420501	560130003001609	112
560130003001466	105400	560130003001610	235983
560130003001470	240299	560130003001617	7500
560130003001480	261384	560130003001621	169399
560130003001494	240299	560130003001622	7300
560130003001495	180202	560130003001625	590699
560130003001499	105400	560130003001626	1203175
560130003001502	125001	560130003001627	4703256
560130003001507	23300	560130003001630	272252
560130003001514	457399	560130003001631	12556100
560130003001515	24700	560130003001632	2697516
560130003001516	794	560130003001633	5055837
560130003001517	214501	560130003001634	5524499
560130003001525	123401	560130003001635	1858340
560130003001526	123401	560130003001636	23133981
560130003001527	606501	560130003001638	2352447
560130003001528	16300	560130003001639	188924
560130003001529	2700	560130003001640	623179
560130003001531	77680	560130003001641	321242
560130003001532	108025	560130003001642	780552
560130003001533	35400	560130003001644	231269
560130003001534	62201	560130003001648	720218

Census Block	Exposure Value (Structure)		
560130003001649	24615671	560130003001794	565574
560130003001650	705918	560130003001795	205338
560130003001651	767083	560130003001796	16215
560130003001652	4617253	560130003001799	139808
560130003001653	395519	560130003001800	139808
560130003001654	3161598	560130003001802	5175
560130003001658	2184989	560130003001805	47526
560130003001659	400161	560130003001806	47610
560130003001660	123679	560130003001807	11040
560130003001662	1438553	560130003001808	11040
560130003001663	1079696	560130003001867	268147
560130003001670	1335190	560130003001874	17918
560130003001673	1599683	560130003001875	139808
560130003001674	269314	560130003001876	98148
560130003001675	3350760	560130003001877	98148
560130003001676	945093	560130003001882	98148
560130003001677	841940	560130003001885	98148
560130003001678	184750	560130003001894	141733
560130003001679	179000	560130003001923	169399
560130003001681	179000	560130003001926	179000
560130003001689	164225	560130003001928	10618
560130003001690	967910	560130003001929	43125
560130003001693	406111	560130003001933	200100
560130003001694	430299	560130003001946	423501
560130003001695	62309	560130003001947	110801
560130003001696	406111	560130003001997	14426
560130003001697	406111	560130003002012	118600
560130003001707	120865	560130003002020	92800
560130003001714	3105	560130003002022	1180269
560130003001716	32775	560130003002023	195326
560130003001728	22300	560130003002024	418854
560130003001756	379633	560130003002025	271706
560130003001757	2040891	560130003002026	368375
560130003001758	28280	560130003002027	274752
560130003001760	198206	560130003002028	254129
560130003001761	41278	560130003002029	429526
560130003001762	167911	560130003002030	229914
560130003001763	64508	560130003002031	346663
560130003001764	141999	560130003002032	218504
560130003001765	1690310	560130003002033	273137
560130003001766	545283	560130003002034	358266
560130003001767	632624	560130003002035	439053
560130003001769	27025	560130003002036	822535
560130003001770	14260	560130003002037	500772
560130003001772	349891	560130003002038	186486
560130003001773	286245	560130003002039	2681175
560130003001775	520382	560130003002040	70851
560130003001776	571448	560130003002041	223799
560130003001789	609373	560130003002042	182792
560130003001793	17476	560130003002043	43139
		560130003002044	228630

Census Block	Exposure Value (Structure)		
560130003002047	162972	560130003002127	3528724
560130003002048	529964	560130003002128	1703871
560130003002049	84902	560130003002129	1327263
560130003002050	205530	560130003002130	414745
560130003002051	333160	560130003002131	10584563
560130003002052	102969	560130003002132	3106348
560130003002053	1711747	560130003002138	909658
560130003002058	1190457	560130003002139	818784
560130003002060	406741	560130003002140	1279752
560130003002061	420501	560130003002144	179300
560130003002064	167126	560130003002155	226200
560130003002066	317649	560130003002161	67581
560130003002068	345036	560130003002163	16011
560130003002069	4926171	560130003002191	52800
560130003002071	295921	560130003002196	22700
560130003002072	1907865	560130003002222	22700
560130003002074	1172131	560130003002245	43100
560130003002077	142100	560130003002258	25800
560130003002078	195402	560130003002263	240299
560130003002080	186600	560130003002264	7968
560130003002082	598027	560130003002285	22700
560130003002087	2121654	560130003002295	986437
560130003002091	143611	560130003002300	221875
560130003002093	94400	560130003002302	253365
560130003002094	10720	560130003002303	578547
560130003002095	5588031	560130003002305	26600
560130003002096	2840089	560130003002306	408676
560130003002098	699010	560130003002315	722797
560130003002101	193753	560130003002316	766678
560130003002104	14530398	560130004001000	4659440
560130003002105	14537322	560130004001004	3256
560130003002106	1501880	560130004001009	272488
560130003002107	1834812	560130004001020	140036
560130003002108	6284004	560130004001026	269331
560130003002111	6865267	560130004001030	457517
560130003002112	2742756	560130004001032	90544
560130003002113	2747088	560130004001034	377023
560130003002114	1104008	560130004001039	1232500
560130003002115	2352545	560130004001046	2536494
560130003002116	1359122	560130004001047	3181146
560130003002117	1820393	560130004001048	254504
560130003002118	350772	560130004001066	1953414
560130003002119	3396105	560130004001080	115418
560130003002120	843488	560130004001100	16824352
560130003002121	1040228	560130004001137	166502
560130003002122	119414	560130004001139	2986188
560130003002123	54652	560130004001140	599368
560130003002124	1374970	560130004001141	514267
560130003002125	2261155	560130004001142	3956089
560130003002126	2192870	560130004001143	2115938
		560130004001146	119790

Census Block	Exposure Value (Structure)		
560130004001147	662405	560130004001307	246242
560130004001148	497234	560130004001308	1227982
560130004001150	1672012	560130004001309	273026
560130004001153	126437	560130004001310	509867
560130004001156	56613	560130004001311	263453
560130004001157	181483	560130004001312	754146
560130004001159	90544	560130004001313	534115
560130004001162	576263	560130004001314	33106
560130004001166	2449789	560130004001315	196307
560130004001170	1411589	560130004001316	123692
560130004001173	802369	560130004001317	258934
560130004001178	3693	560130004001318	365460
560130004001179	440267	560130004001319	1723054
560130004001181	313231	560130004001320	647976
560130004001198	2121723	560130004001321	1335856
560130004001235	244855	560130004001322	1060386
560130004001239	289911	560130004001323	595947
560130004001242	47700	560130004001326	29647
560130004001244	47700	560130004001327	1949616
560130004001245	47700	560130004001328	963000
560130004001247	4598	560130004001329	686400
560130004001250	52298	560130004001330	258418
560130004001254	228752	560130004001331	3184378
560130004001255	443256	560130004001332	933590
560130004001256	285971	560130004001333	302617
560130004001263	15695	560130004001335	2514037
560130004001268	12562414	560130004001337	2567003
560130004001270	386835	560130004001338	1510420
560130004001273	118485	560130004001340	3124510
560130004001276	293762	560130004001341	571563
560130004001277	347622	560130004001342	1737655
560130004001284	927658	560130004001343	2034478
560130004001285	524123	560130004001344	352900
560130004001286	123663	560130004001345	332077
560130004001287	616117	560130004001348	35427
560130004001288	778428	560130004001349	659336
560130004001292	407732	560130004001350	4450597
560130004001293	696590	560130004001351	784581
560130004001294	743874	560130004001352	957893
560130004001295	721022	560130004001353	633697
560130004001296	558627	560130004001354	9341289
560130004001297	509714	560130004001355	218660
560130004001298	175235	560130004001357	2523399
560130004001299	388267	560130004001360	128027
560130004001300	515120	560130004001361	707079
560130004001301	683805	560130004001362	5613016
560130004001302	213165	560130004001365	1500167
560130004001303	316297	560130004001366	3191752
560130004001304	555016	560130004001368	347112
560130004001306	490406	560130004001416	2242340

Census Block	Exposure Value (Structure)		
560130004001417	4708	560130004001510	291504
560130004001419	468858	560130004001511	829948
560130004001420	2309634	560130004001513	2318570
560130004001422	81834	560130004001518	359783
560130004001423	307766	560130004001519	1803274
560130004001426	374651	560130004001520	1063283
560130004001429	1168568	560130004001521	524922
560130004001433	2617398	560130004001522	723151
560130004001434	460186	560130004001523	2057072
560130004001439	3482107	560130004001524	133743
560130004001441	130168	560130004001525	2231033
560130004001442	177047	560130004001526	901696
560130004001443	154115	560130004001527	187024
560130004001444	296653	560130004001528	379969
560130004001447	583791	560130004001529	2766261
560130004001448	470208	560130004001530	2222442
560130004001449	993822	560130004001532	438420
560130004001450	5286489	560130004001533	1834070
560130004001451	1793149	560130004001536	280796
560130004001452	104165	560130004001537	751033
560130004001454	5169937	560130004001539	589123
560130004001458	3679417	560130004001540	755788
560130004001459	232100	560130004001541	808490
560130004001460	1783925	560130004001542	177519
560130004001461	2715559	560130004001544	804811
560130004001463	18571	560130004001545	258457
560130004001468	105908	560130004001546	126141
560130004001471	136412	560130004001547	403462
560130004001472	55738	560130004001548	104495
560130004001473	245251	560130004001549	187160
560130004001474	208711	560130004001550	311105
560130004001477	223093	560130004001551	1026301
560130004001478	873360.1	560130004001557	311006
560130004001479	644082	560130004001559	218308
560130004001480	847076	560130004001566	2672699
560130004001481	46600	560130004001567	686923
560130004001482	401200	560130004001570	686923
560130004001483	234917	560130004001574	220989
560130004001484	649818	560130004001575	3072851
560130004001486	1487593	560130004001577	129153
560130004001487	342152	560130004001582	105256
560130004001488	570047	560130004001583	1148736
560130004001489	1064316	560130004001601	112400
560130004001491	2593615	560130004001609	469823
560130004001492	1194669	560130004001612	727990
560130004001494	175940	560130004001613	219829
560130004001497	196777	560130004001628	279896
560130004001498	1320134	560130004001634	500603
560130004001499	642090	560130004001995	237043
560130004001507	47700	560130004001997	112400
		560139401001032	168614

Census Block	Exposure Value (Structure)		
560139401001063	4949	560139401002194	229095
560139401001069	1436032	560139401002199	263946
560139401001160	184477	560139401002200	457225
560139401001194	2636	560139401002201	143589
560139401001229	42150	560139401002202	47763
560139401001232	129413	560139401002204	261018
560139401001233	521064	560139401002205	109581
560139401001243	169098	560139401002211	230842
560139401001249	1312584	560139401002213	147586
560139401001252	1017660	560139401002216	334678
560139401001257	71727	560139401002217	218053
560139401001262	165078	560139401002226	380064
560139401001263	71039	560139401002227	199236
560139401001264	25197	560139401002228	338626
560139401001268	484002	560139401002229	4966
560139401001269	42150	560139401002232	126542
560139401001273	161294	560139401002235	85363
560139401001274	270918	560139401002236	158599
560139401001275	42150	560139401002237	84153
560139401001279	464585	560139401002240	201207
560139401001283	787	560139401002241	109016
560139401001284	184	560139401002243	57782
560139401001286	539	560139401002244	5193
560139401001287	367518	560139401002245	1010102
560139401001320	4949	560139401002249	196023
560139401002017	70798	560139401002250	157031
560139401002019	520325	560139401002274	290927
560139401002020	110589	560139401002281	257813
560139401002025	135247	560139401002282	381450
560139401002035	626853	560139401002288	465303
560139401002038	206435	560139401002292	192441
560139401002040	429026	560139401002299	87248
560139401002041	180213	560139401002302	443243
560139401002042	815263	560139401003014	18270
560139401002043	802287	560139401003030	106260
560139401002045	4855	560139401003046	337565
560139401002054	562029	560139401003213	87319
560139401002059	122326	560139401003219	87319
560139401002061	1293641	560139401003222	390639
560139401002081	528580	560139401003223	1708
560139401002083	237683	560139401003272	334678
560139401002096	302192	560139401003279	309936
560139401002098	128619	560139401003283	144544
560139401002099	1391887	560139401004003	24360
560139401002103	58148	560139401004006	693
560139401002104	124720	560139401004007	10164
560139401002107	553247	560139401004012	138080
560139401002123	44445	560139401004023	77617
560139401002191	120338	560139401004034	81197
560139401002193	342964	560139401004035	146799
		560139401004036	275235

Census Block	Exposure Value (Structure)		
560139401004038	77617	560139402001368	156749
560139401004039	370762	560139402001384	518075
560139401004041	167567	560139402001386	323058
560139401004047	91014	560139402001388	89906
560139401004049	109726	560139402001390	273560
560139401004050	756555	560139402001396	66906
560139401005000	54516	560139402001398	604657
560139401005001	237700	560139402001407	182876
560139401005004	599190	560139402001409	280901
560139401005006	139403	560139402001410	736722
560139401005007	121622	560139402001413	53678
560139401005010	87319	560139402001416	64988
560139401005014	101172	560139402001417	4186
560139401005015	244399	560139402001424	83022
560139401005017	8547	560139402001428	266638
560139401005018	135241	560139402001429	1365446
560139401005020	90668	560139402001430	133313
560139401005022	205591	560139402001434	45293
560139401005023	491275	560139402001435	102627
560139401005045	116193	560139402001440	12948
560139401005057	181942	560139402001441	342279
560139401005065	300879	560139402001449	58697
560139401005066	43544	560139402001453	611841
560139401005077	191888	560139402001454	24348
560139401005078	295251	560139402001466	70787
560139401005084	140679	560139402001474	220703
560139401005085	105221	560139402001476	195214
560139401005093	417885	560139402001477	354830
560139401005094	197717	560139402001478	246096
560139401005135	87319	560139402001479	566006
560139401005144	1044857	560139402001480	748920
560139402001189	92759	560139402001481	244063
560139402001251	101352	560139402001482	937934
560139402001293	209945	560139402001483	282240
560139402001294	209945	560139402001487	432220
560139402001298	557941	560139402001489	1570223
560139402001300	102051	560139402001490	462042
560139402001302	341430	560139402001491	777264
560139402001303	264183	560139402001494	399152
560139402001306	55869	560139402001495	1771
560139402001309	288342	560139402001498	34845
560139402001316	174257	560139402001500	384866
560139402001339	195137	560139402001501	92813
560139402001345	234421	560139402001502	1058832
560139402001346	282593	560139402001503	9157
560139402001348	42488	560139402001504	1342403
560139402001360	58180	560139402001505	241949
560139402001361	242192	560139402001506	578731
560139402001363	153538	560139402001507	892100
560139402001367	711	560139402001508	207690
		560139402001509	551168

Census Block	Exposure Value (Structure)		
560139402001511	129267	560139402002007	730457
560139402001512	383378	560139402002008	201172
560139402001513	57305	560139402002009	453513
560139402001514	8225	560139402002010	286613
560139402001518	364388	560139402002011	1169907
560139402001519	824233	560139402002012	211913
560139402001520	135975	560139402002013	2441842
560139402001521	141401	560139402002014	169078
560139402001522	149769	560139402002016	1093
560139402001523	131672	560139402002017	72257
560139402001524	234108	560139402002018	456530
560139402001525	54477	560139402002021	278713
560139402001526	223111	560139402002022	334961
560139402001527	242799	560139402002023	234144
560139402001528	397791	560139402002024	353465
560139402001529	226912	560139402002026	168757
560139402001530	1037	560139402002027	1472194
560139402001531	120432	560139402002028	547726
560139402001532	36507	560139402002031	2135
560139402001533	199224	560139402002032	125744
560139402001534	314693	560139402002033	17827
560139402001535	223458	560139402002035	390780
560139402001536	80580	560139402002036	325678
560139402001537	651	560139402002038	1667413
560139402001538	409	560139402002039	1849594
560139402001539	413128	560139402002040	307856
560139402001540	479916	560139402002042	821451
560139402001541	1260896	560139402002043	285679
560139402001542	96788	560139402002044	432142
560139402001545	764638	560139402002046	190549
560139402001547	207875	560139402002047	689024
560139402001548	104664	560139402002049	1213984
560139402001592	203359	560139402002052	774013
560139402001594	1331677	560139402002053	248436
560139402001626	581161	560139402002056	23077
560139402001627	1202082	560139402002057	96677
560139402001628	838719	560139402002063	787042
560139402001629	681257	560139402002064	935984
560139402001630	163607	560139402002065	459536
560139402001633	204926	560139402002066	212219
560139402001634	867641	560139402002067	143794
560139402001657	498852	560139402002068	1659373
560139402001683	645650	560139402002069	1273634
560139402001684	55702	560139402002071	339321
560139402002000	1853342	560139402002072	2158840
560139402002002	771486	560139402002074	188802
560139402002003	740350	560139402002075	2405810
560139402002004	1025735	560139402002076	13239
560139402002005	43540	560139402002078	456913
560139402002006	1111561	560139402002080	1317719
		560139402002085	903

Census Block	Exposure Value (Structure)		
560139402002086	70744	560139402002215	187690
560139402002088	178064	560139402002218	554613
560139402002089	403281	560139402002220	178905
560139402002090	63598	560139402002221	890828
560139402002091	317417	560139402002222	3671820
560139402002093	196855	560139402002223	144342
560139402002094	155804	560139402002224	328951
560139402002095	196731	560139402002225	191677
560139402002096	53076	560139402002226	1221097
560139402002098	178189	560139402002227	24440
560139402002099	54582	560139402002228	1467490
560139402002100	3434	560139402002229	635524
560139402002101	294277	560139402002230	1124062
560139402002102	474698	560139402002231	627341
560139402002103	722215	560139402002234	124021
560139402002113	585344	560139402002236	279766
560139402002120	1254473	560139402002237	387101
560139402002121	61642	560139402002238	114005
560139402002122	549107	560139402002240	2224389
560139402002123	150934	560139402002241	2075456
560139402002124	302840	560139402002242	1058
560139402002126	1130400	560139402002243	341434
560139402002128	270080	560139402002244	464300
560139402002131	111260	560139402002245	314610
560139402002132	403160	560139402002246	1829156
560139402002134	300179	560139402002247	922889
560139402002141	150074	560139402002248	724509
560139402002142	964699	560139402002249	1610626
560139402002143	1432322	560139402002250	165387
560139402002146	15328	560139402002251	511427
560139402002147	316514	560139402002252	831348
560139402002149	3906752	560139402002253	145758
560139402002152	2847	560139402002254	149327
560139402002153	136941	560139402002255	79941
560139402002156	820607	560139402002256	79941
560139402002157	1145077	560139402002257	1430011
560139402002159	517145	560139402002258	477954
560139402002163	324351	560139402002260	110259
560139402002171	157098	560139402002261	298036
560139402002177	282241	560139402002263	883985
560139402002184	33482	560139402002264	286813
560139402002185	416445	560139402002265	184352
560139402002194	69267	560139402002267	86910
560139402002198	135376	560139402002268	1272607
560139402002200	496293	560139402002269	391755
560139402002204	1347725	560139402002271	411384
560139402002205	342153	560139402002272	1556548
560139402002209	155789	560139402002273	222491
560139402002210	2778544	560139402002274	1150294
560139402002211	2461936	560139402002276	1391511
		560139402002277	184948

Census Block	Exposure Value (Structure)		
560139402002278	316791	560139402003068	3887729
560139402002280	450169	560139402003069	438924
560139402002283	814526	560139402003070	2569737
560139402002285	135249	560139402003071	923423
560139402002287	166465	560139402003072	5842008
560139402002290	54262	560139402003073	1685367
560139402002321	1848	560139402003075	2642759
560139402002331	219971	560139402003076	373182
560139402002348	73220	560139402003077	86047
560139402002349	322663	560139402003079	1037892
560139402002998	434533	560139402003081	1855298
560139402003001	483021	560139402003083	1223737
560139402003002	538952	560139402003084	384409
560139402003005	1677011	560139402003086	77013
560139402003006	207243	560139402003087	1150879
560139402003007	288828	560139402003090	4575787
560139402003008	96249	560139402003093	2600321
560139402003009	278672	560139402003094	319302
560139402003010	373958	560139402003095	173637
560139402003011	164292	560139402003097	105523
560139402003012	1653005	560139402003099	387802
560139402003014	877620	560139402003106	756490
560139402003015	46916	560139402003114	4300848
560139402003016	159073	560139402003116	912260
560139402003017	492851	560139402003117	128575
560139402003019	888918	560139402003120	1156510
560139402003021	144923	560139402003121	799308
560139402003022	437670	560139402003123	5668979
560139402003023	3174	560139402003124	156913
560139402003024	1131017	560139402003125	1060876
560139402003025	16286	560139402003126	515129
560139402003026	1119570	560139402003128	98463
560139402003027	68088	560139402003132	4658876
560139402003028	1435236	560139402003135	1553216
560139402003035	79941	560139402003136	696487
560139402003037	499147	560139402003138	2597358
560139402003038	704705	560139402003139	1096579
560139402003039	253052	560139402003144	1090948
560139402003040	80408	560139402003145	1892482
560139402003042	44153	560139402003146	1369400
560139402003048	221512	560139402003152	1328369
560139402003050	543224	560139402003153	972696
560139402003055	2401285	560139402003154	549238
560139402003056	187901	560139402003159	540745
560139402003057	2936119	560139402003160	48000
560139402003058	3464522	560139402003161	1079912
560139402003060	66612	560139402003166	1674
560139402003065	278694	560139402003171	76646
560139402003066	1833642	560139402003178	111082
560139402003067	1126758	560139402003180	1087544
		560139402003181	642885

Census Block	Exposure Value (Structure)		
560139402003182	463277	560139402005005	7231
560139402003187	585767	560139402005021	175017
560139402003188	277106	560139402005024	351369
560139402003189	2284498	560139402005025	763032
560139402003190	3443978	560139402005027	612973
560139402004000	300135	560139402005030	129610
560139402004002	376289	560139402005031	52031
560139402004003	285172	560139402005032	64240
560139402004004	1040	560139402005034	21891
560139402004005	456875	560139402005035	12760
560139402004007	72073	560139402005041	67370
560139402004008	190620	560139402005042	571169
560139402004009	89049	560139402005043	440501
560139402004011	270647	560139402005075	3621
560139402004012	89396	560139402005076	95810
560139402004024	148837	560139402005078	472561
560139402004025	69646	560139402005079	166802
560139402004028	81660	560139402005085	98417
560139402004029	132599	560139402005086	102788
560139402004030	137214	560139402006022	55932
560139402004032	197737	560139402006028	75901
560139402004034	175905	560139402006120	62260
560139402004049	296983	560139402006122	318243
560139402004091	196118	560139402006123	177928
560139402004098	274366	560139402006128	2301909
560139402004099	1260663	560139402006131	9900
560139402004113	347	560139402006136	197382
560139402004122	380100	560139402006156	300135
560139402004145	115039	560139402006178	402923
560139402004154	569317	560139402006180	300135
560139402004162	254301	560139402006263	300135
560139402004163	258957	560139402006279	274492
560139402004164	793883	560139402006280	158134
560139402004165	66481	560139402006301	67135
560139402004167	514212	560139402006302	228536
560139402004169	486794	560139402006303	182931
560139402004175	10100	560139402006306	166980
560139402004177	800	560139403001000	216204
560139402004178	972974	560139403001002	118808
560139402004179	77351	560139403001003	967412
560139402004180	90701	560139403001004	2028884
560139402004181	353617	560139403001005	58688
560139402004182	483215	560139403001006	5739133
560139402004183	39989	560139403001007	696495
560139402004186	2151	560139403001008	639333
560139402004187	117380	560139403001009	141356
560139402004188	73785	560139403001010	278080
560139402004190	97119	560139403001011	376043
560139402005000	209389	560139403001012	1301868
560139402005004	1210	560139403001016	2020106
		560139403001017	8805

Census Block	Exposure Value (Structure)		
		560139403002072	3047
		560139403002073	1123410
		560139403002074	617939
		560139403002075	415580
		560139403003000	4396915
		560139403003001	5749181
		560139403003002	2479394
		560139403003003	1820110
		560139403003004	970588
		560139403003005	3496998
		560139403003006	1268755
		560139403003007	140727
		560139403003008	4227814
		560139403003009	3404157
		560139403003010	1113406
		560139403003011	2019481
		560139403003012	1615989
		560139403003013	1851662
		560139403003014	732125
		560139403003015	115166
		560139403003016	311517
		560139403004000	1389553
		560139403004001	752729
		560139403004002	720601
		560139403004003	870237
		560139403004004	1000172
		560139403004005	1440115
		560139403004006	1653522
		560139403004007	767724
		560139403004008	441610
		560139403004009	682348
		560139403004010	777580
		560139403004011	1587670
		560139403004012	1439641
		560139403004013	627010
		560139403004014	504023
		560139403004015	900362
		560139403004016	672383
		560139403004018	738308
		560139403004019	699557
		560139403004020	569067
		560139403004021	607946
		560139403004022	871923
		560139403004023	502799
		560139403004024	526885
		560139403004025	516548
		560139403004026	537500
		560139403004027	389541
		560139403004028	403876
		560139403004029	888472
		560139403004030	133428
560139403001018	2397		
560139403001019	45658		
560139403001020	77885		
560139403001021	135578		
560139403001022	159203		
560139403001024	1169		
560139403001025	15359		
560139403001026	479056		
560139403002000	122271		
560139403002001	3226401		
560139403002003	1008		
560139403002004	168824		
560139403002006	58800		
560139403002007	995		
560139403002008	33531		
560139403002009	97506		
560139403002010	16382		
560139403002012	800		
560139403002015	30963		
560139403002016	21700		
560139403002021	9876084		
560139403002022	613305		
560139403002023	278319		
560139403002025	81628		
560139403002026	37086		
560139403002027	60400		
560139403002029	149941		
560139403002030	166500		
560139403002031	299596		
560139403002032	1031823		
560139403002033	160924		
560139403002038	16513420		
560139403002040	414025		
560139403002041	623326		
560139403002042	985335		
560139403002043	682900		
560139403002044	285931		
560139403002045	6195924		
560139403002046	1754533		
560139403002047	2526907		
560139403002048	4062954		
560139403002049	966881		
560139403002050	118558		
560139403002051	237833		
560139403002052	3173814		
560139403002053	500458		
560139403002059	1029855		
560139403002069	269600		
560139403002070	2508507		

Census Block	Exposure Value (Structure)		
		560139403006070	611124
		560139403006071	1110809
560139403005006	25136	560139403006072	1359969
560139403005009	1648512	560139403006073	235129
560139403005013	1829828	560139403006076	25713
560139403005014	1965256	560139403006078	46700
560139403005015	771627	560139403006080	503359
560139403005016	271051	560139403006081	55706
560139403005020	859545	560139403006083	8744.51
560139403005021	284754	560139404001002	2952351
560139403005023	1775633	560139404001003	800327
560139403005025	242412	560139404001005	415666
560139403005026	56127	560139404001006	5908139
560139403005027	64800	560139404001007	426102
560139403005029	68200	560139404001008	392401
560139403005032	152737	560139404001009	2098733
560139403005035	418970	560139404001010	1087665
560139403005040	2647	560139404001011	125565
560139403005042	2647	560139404001012	596680
560139403006000	874169	560139404001013	676775
560139403006003	1053360	560139404001014	384542
560139403006004	46821	560139404001016	1521
560139403006005	414720	560139404001019	465831
560139403006006	104583	560139404001024	7383946
560139403006010	115	560139404001025	191207
560139403006011	447503	560139404001026	582661
560139403006015	4586595	560139404001027	45133
560139403006018	37100	560139404001029	253250
560139403006022	12881	560139404001030	2359720
560139403006024	1147027	560139404001036	3281059
560139403006025	339888	560139404001037	6982318
560139403006028	228503	560139404001040	73669
560139403006030	73717	560139404001041	1083073
560139403006032	648200	560139404002000	4985405
560139403006033	239083	560139404002002	65109
560139403006034	624854	560139404002004	292053
560139403006035	539275	560139404002007	5070233
560139403006036	537567	560139404002015	13183810
560139403006037	40370	560139404002016	592315
560139403006038	1053453	560139404002017	2498517
560139403006039	1045541	560139404002019	112190
560139403006040	1700110	560139404002020	586400
560139403006041	1427948	560139404002021	706172
560139403006042	950842	560139404002022	25997
560139403006046	110124	560139404002023	95568
560139403006047	110124	560139404003000	1340400
560139403006058	169903	560139404003001	184292
560139403006061	41844	560139404003002	285419
560139403006063	45716	560139404003003	4553171
560139403006066	760015	560139404003004	476185
560139403006067	169600	560139404003005	626357

Census Block	Exposure Value (Structure)		
560139404003006	145049	560139404005011	126390
560139404003007	8682724	560139404005012	1864392
560139404003008	3435230	560139404005013	849370
560139404003009	3643687	560139404005014	3902167
560139404003010	1014789	560139404005015	84787
560139404003011	1092083	560139404005016	909296
560139404003012	3283013	560139404005017	1264450
560139404003013	3155240	560139404005018	775676
560139404003014	1051608	560139404005021	959225
560139404003015	232425	560139404005022	4540985
560139404003016	2010536	560139404005023	434445
560139404003017	3737274	560139404005024	1101685
560139404003018	11099311	560139404005027	5478622
560139404003019	2274238	560139404005028	2053461
560139404003020	1653342	560139404005029	1464143
560139404003021	1607714	560139404005030	3959399
560139404003022	563600	560139404005031	2846271
560139404004000	32522140	560139404005032	3673769
560139404004001	1426189	560139404005033	2024511
560139404004002	860757	560139404005034	1145569
560139404004003	787306	560139404005037	349030
560139404004004	1851344	560139404005040	468149
560139404004005	2420208	560139404005042	154300
560139404004006	641956	560139404005046	319127
560139404004007	5905535	560139404005047	1472893
560139404004008	550629	560139404005048	1117597
560139404004009	303916	560139404005050	3443247
560139404004010	3268734	560139404005054	5925950
560139404004011	4571988	560139404005055	2194661
560139404004012	1138672	560139404005056	242747
560139404004013	4336358	560139404005059	237366
560139404004014	4154563	560139404005060	377160
560139404004016	18185285	560139404005062	617477
560139404004020	897121	560139404005063	244886
560139404004021	369835	560139404005065	4770914
560139404004022	2462843	560139404005066	272462
560139404004023	1702716	560139404006000	3736380
560139404004024	2005036	560139404006001	328299
560139404004025	659400	560139404006003	84610
560139404004026	36281	560139404006004	363445
560139404005000	621806	560139404006006	3813075
560139404005001	2016861	560139404006008	1530074
560139404005002	166992	560139404006011	4966657
560139404005003	231293	560139404006013	543227
560139404005004	256821	560139404006014	890813
560139404005005	52910	560139404006015	1546389
560139404005006	919574	560139404006018	3744187
560139404005007	450853	560139404006019	377737
560139404005008	54422	560139404006020	4001
560139404005009	122740	560139404006021	138681
		560139404006022	1557598

Census Block	Exposure Value (Structure)		
560139404006023	1339320	560139405002000	1609097
560139404006026	594218	560139405002001	1962424
560139404006027	3170678	560139405002003	6918167
560139404006028	239115	560139405002004	2840646
560139404006030	7372178	560139405002005	3869281
560139404006031	865415	560139405002007	1850671
560139404006036	1024810	560139405002008	855508
560139404006037	168127	560139405002009	885681
560139404006038	2086997	560139405002010	395871
560139404006041	415057	560139405002011	539345
560139404006042	2252089	560139405002012	660328
560139404006045	587154	560139405002013	674761
560139404006047	1369701	560139405002014	629602
560139404006048	2711627	560139405002015	305100
560139404006050	220254	560139405002016	1130502
560139404006051	519570	560139405002017	1335942
560139404006052	357139	560139405002018	952162
560139404006053	63400	560139405002019	1536542
560139404006054	255055	560139405002020	1066453
560139404006055	450163	560139405002021	442970
560139404006056	135837	560139405002022	1505242
560139404006057	1290208	560139405002023	1015940
560139404006058	1272469	560139405002025	249240
560139404006059	1366312	560139405002026	305428
560139404006060	449150	560139405003000	2993300
560139404006061	426737	560139405003001	367812
560139404006062	2779998	560139405003003	1841845
560139404006063	1175716	560139405003004	74875
560139404006064	6782023	560139405003005	2892913
560139404006065	4292766	560139405003006	973260
560139404006066	4714589	560139405003007	1030171
560139404006067	544701	560139405003008	991211
560139404006068	745076	560139405003009	522061
560139404006069	456083	560139405003010	1358000
560139404006073	78279	560139405003011	295750
560139405001000	3330119	560139405003012	553693
560139405001001	1349226	560139405003013	507546
560139405001002	3545630	560139405003014	1183730
560139405001003	3473153	560139405004000	1099780
560139405001004	3990777	560139405004001	207279
560139405001005	4877809	560139405004002	993331
560139405001007	1307250	560139405004003	643000
560139405001008	1277525	560139405004004	818751
560139405001009	1707580	560139405004005	641425
560139405001010	1874044	560139405004006	1024200
560139405001011	1149321	560139405004008	1095000
560139405001012	156081	560139405004009	1130900
560139405001013	1768559	560139405004010	1546578
560139405001014	87335	560139405004011	1578503
560139405001015	756185	560139405004012	1200737
		560139405004013	1106320

Census Block	Exposure Value (Structure)
560139405004014	487119
560139405004015	903477
560139405004016	729801
560139405004017	1702535
560139405004018	2935189
560139405004019	1329733
560139405004020	716292
560139405004021	656521
560139405004022	707454
560139405004023	992590
560139405004024	858053
560139405004025	675295
560139405004026	871084
560139405004027	911250
560139405004028	586476
560139405005000	462049
560139405005001	935622
560139405005002	1092908
560139405005003	903178
560139405005004	949849
560139405005005	989870
560139405005006	1097988
560139405005007	662399
560139405005008	1354446
560139405005009	841498
560139405005010	417601
560139405005011	971579
560139405005012	792741
560139405005014	1029087
560139405005015	1068113
560139405005016	618190
560139405005017	864781
560139405005018	476000
560139405005019	499038
560139405005020	836260
560139405005021	585825
560139405005022	696522
560139405005023	942084
560139405005024	941350
560139405005025	474865
560139405005026	737936