

**ORDINANCE NO. 2017-01  
CITY OF FAYETTEVILLE, TENNESSEE**

**AN ORDINANCE AMENDING THE ZONING ORDINANCE OF FAYETTEVILLE  
TENNESSEE TO PROVIDE FOR THE INCLUSION OF REQUIRED REGULATORY  
CHANGES TO THE OFFICIAL ZONING MAP**

**WHEREAS**, the Fayetteville Regional Planning Commission has recommended to the Board of Mayor and Alderman that the “Zoning Map of Fayetteville, Tennessee”, be amended as hereafter described; and,

**WHEREAS**, on January 24, 2017, the Fayetteville Municipal/Regional Planning Commission did review and recommend for adoption, the following rezoning request; and,

**NOW, THEREFORE, BE IT ORDAINED** BY THE Board of Mayor and Alderman of the City of Fayetteville that the “Zoning Ordinance of Fayetteville, Tennessee” be amended as follows:

**Section 1.** Change the zoning classification of a portion of the following described parcel of real estate from R-3, High-Density Residential District, to C-3, General Commercial District, here described as:

**Section 2.** Map and Parcel as follows, to wit:

	<u>Map</u>	<u>Group</u>	<u>Parcel</u>	<u>Deed Book</u>	<u>Page</u>
Parolini Properties LLC	079L	G	020.00	I15	799

**Section 3.** The attached map, labeled “Exhibit A”, depicting the above listed rezoning area shall be incorporated herein by reference.

**BE IT FURTHER ORDAINED** that this Ordinance shall take effect from and after its passage, the public welfare requiring it.

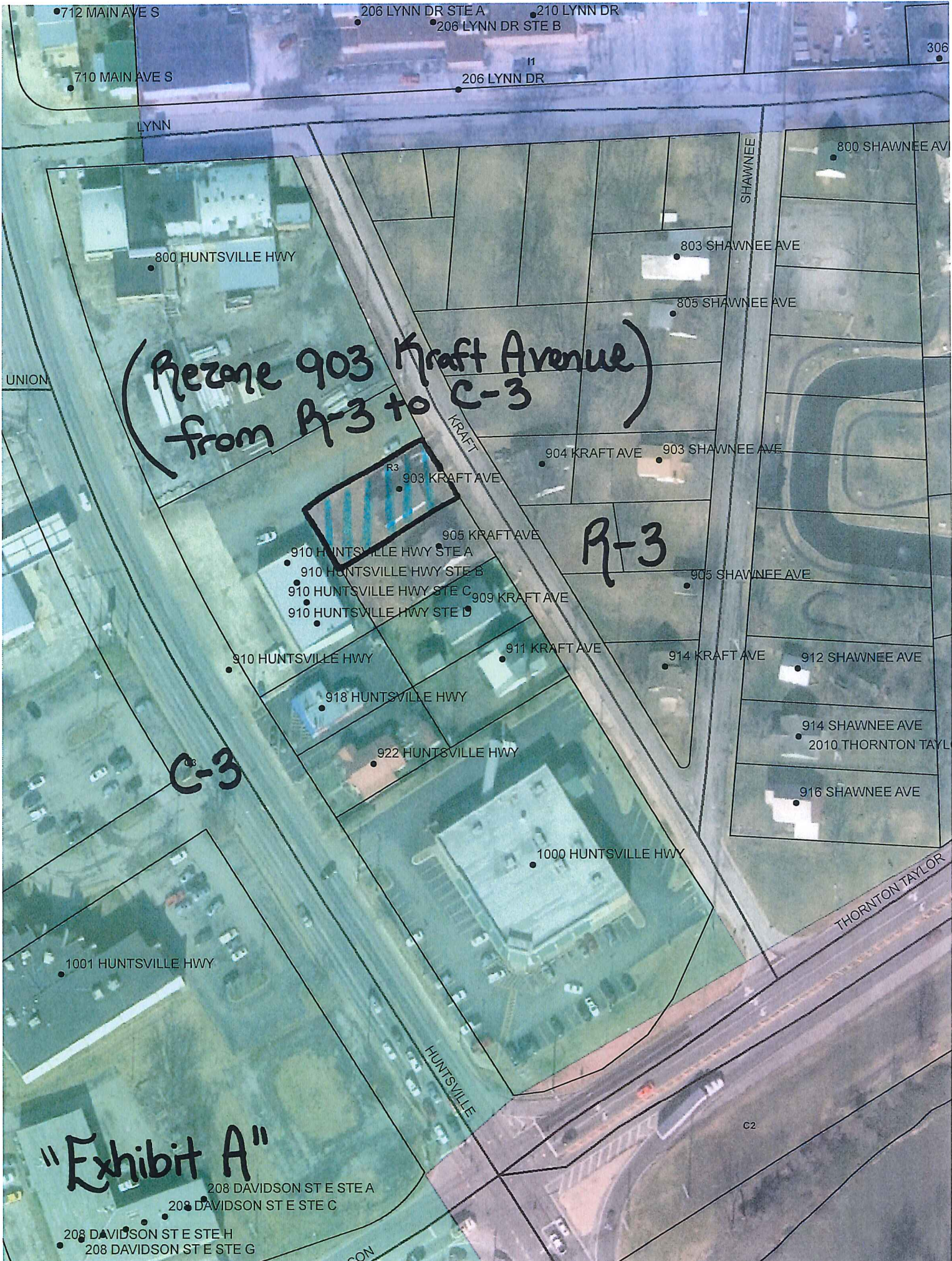
ADOPTED THIS \_\_\_\_\_ DAY OF \_\_\_\_\_, 2017.

---

Jon Law, Mayor

---

Scott Collins, City Clerk



(Rezone 903 Kraft Avenue)  
from R-3 to C-3



R-3

C-3

"Exhibit A"

712 MAIN AVE S  
 206 LYNN DR STE A  
 210 LYNN DR  
 206 LYNN DR STE B  
 11  
 206 LYNN DR  
 306  
 710 MAIN AVE S  
 LYNN  
 800 HUNTSVILLE HWY  
 803 SHAWNEE AVE  
 805 SHAWNEE AVE  
 800 SHAWNEE AV  
 UNION  
 904 KRAFT AVE  
 903 SHAWNEE AVE  
 903 KRAFT AVE  
 905 KRAFT AVE  
 910 HUNTSVILLE HWY STE A  
 910 HUNTSVILLE HWY STE B  
 910 HUNTSVILLE HWY STE C  
 910 HUNTSVILLE HWY STE D  
 909 KRAFT AVE  
 905 SHAWNEE AVE  
 910 HUNTSVILLE HWY  
 911 KRAFT AVE  
 914 KRAFT AVE  
 912 SHAWNEE AVE  
 918 HUNTSVILLE HWY  
 922 HUNTSVILLE HWY  
 914 SHAWNEE AVE  
 2010 THORNTON TAYL  
 916 SHAWNEE AVE  
 1000 HUNTSVILLE HWY  
 THORNTON TAYLOR  
 1001 HUNTSVILLE HWY  
 HUNTSVILLE  
 208 DAVIDSON ST E STE A  
 208 DAVIDSON ST E STE C  
 208 DAVIDSON ST E STE H  
 208 DAVIDSON ST E STE G  
 SON  
 C2