

ORDINANCE NO. 2021-12
CITY OF FAYETTEVILLE, TENNESSEE

**AN ORDINANCE AMENDING THE ZONING ORDINANCE OF FAYETTEVILLE
TENNESSEE TO PROVIDE FOR THE INCLUSION OF REQUIRED REGULATORY
CHANGES TO THE OFFICIAL ZONING MAP**

WHEREAS, the Fayetteville Regional Planning Commission has recommended to the Board of Mayor and Alderman that the zoning Map of Fayetteville, Tennessee", be amended as hereafter described; and,

WHEREAS, on June 22, 2021, the Fayetteville Municipal/Regional Planning Commission did review and recommend for adoption, the following rezoning request; and,

NOW, THEREFORE, BE IT ORDAINED by The Board of Mayor and Alderman of the City of Fayetteville that the zoning Ordinance of Fayetteville, Tennessee" be amended as follows:

Section 1. Change the zoning classification of a portion of the following described parcel of real estate from R-2, Medium-Density Residential District, to C-3, General Commercial District, here described as:

Section 2. Map and Parcel as follows, to wit:

	Map	<u>Group</u>	Parcel	<u>Deed Book</u>	Page
Craig Carmichael	079F	F	031.00	L16	96
	079F	F	033.00	L16	96

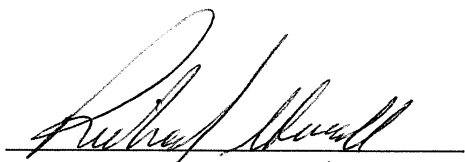
Section 3. The attached map, labeled "Exhibit A", depicting the above listed rezoning area shall be incorporated herein by reference.

BE IT FURTHER ORDAINED that this Ordinance shall take effect from and after its passage, the public welfare requiring it.

Adopted this 14th day of September, 2021.



Michael Whisenant, Mayor



City Clerk

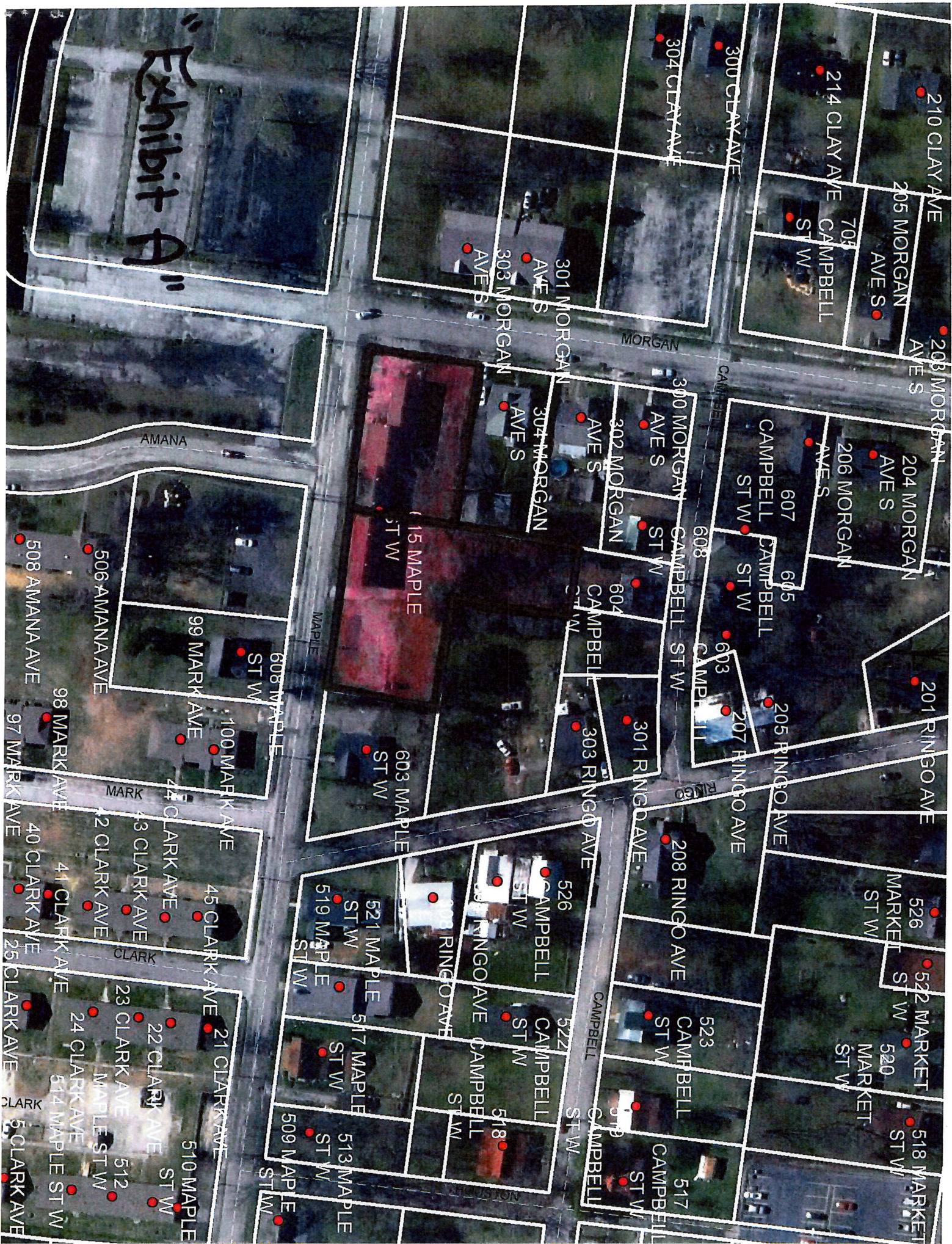


Exhibit A

210 CLAY AVE

205 MORGAN AVE S

214 CLAY AVE CAMPBELL ST W

300 CLAY AVE

304 CLAY AVE

301 MORGAN AVE S

303 MORGAN AVE S

203 MORGAN AVE S

204 MORGAN AVE S

206 MORGAN AVE S

607 CAMPBELL ST W

605 CAMPBELL ST W

603 CAMPBELL ST W

300 MORGAN CAMPBELL ST W

302 MORGAN AVE S

304 MORGAN AVE S

604 CAMPBELL ST W

301 RINGO AVE

303 RINGO AVE

201 RINGO AVE

205 RINGO AVE

207 RINGO AVE

208 RINGO AVE

526 MARKET ST W

522 MARKET ST W

520 MARKET ST W

518 MARKET ST W

523 CAMPBELL ST W

517 CAMPBELL ST W

519 CAMPBELL ST W

518 CAMPBELL ST W

517 CAMPBELL ST W

516 CAMPBELL ST W

515 CAMPBELL ST W

514 CAMPBELL ST W

513 CAMPBELL ST W

512 CAMPBELL ST W

511 CAMPBELL ST W

510 CAMPBELL ST W

509 CAMPBELL ST W

508 CAMPBELL ST W

507 CAMPBELL ST W

506 CAMPBELL ST W

505 CAMPBELL ST W

504 CAMPBELL ST W

503 CAMPBELL ST W

502 CAMPBELL ST W

501 CAMPBELL ST W

500 CAMPBELL ST W

499 CAMPBELL ST W

608 MAPLE ST W

603 MAPLE ST W

604 CAMPBELL ST W

605 CAMPBELL ST W

606 CAMPBELL ST W

607 CAMPBELL ST W

608 CAMPBELL ST W

609 CAMPBELL ST W

610 CAMPBELL ST W

611 CAMPBELL ST W

612 CAMPBELL ST W

613 CAMPBELL ST W

614 CAMPBELL ST W

615 CAMPBELL ST W

616 CAMPBELL ST W

617 CAMPBELL ST W

618 CAMPBELL ST W

619 CAMPBELL ST W

620 CAMPBELL ST W

621 CAMPBELL ST W

622 CAMPBELL ST W

623 CAMPBELL ST W

624 CAMPBELL ST W

625 CAMPBELL ST W

626 CAMPBELL ST W

627 CAMPBELL ST W

628 CAMPBELL ST W

629 CAMPBELL ST W

630 CAMPBELL ST W

631 CAMPBELL ST W

632 CAMPBELL ST W

633 CAMPBELL ST W

634 CAMPBELL ST W

AMANA

MAPLE

MARK

CLARK

CLARK

CLARK