



Your Port of Everett Marina newsletter contains valuable information. Three account numbers are hidden in the newsletter. If you find your account number call the Marina Office at 425.259.6001 or e-mail beths@portofeverett.com to claim your gift certificate!



Bayside is the **ONLY** Place to Get Complete Sales, Service and Storage

www.baysidemarine.com

800.781.9917
607 11TH STREET
PORT OF EVERETT
NORTH MARINA
EVERETT, WA 98201
PORTGARDNERYACHTS.NET

port gardner
yacht brokerage
sail and power

Martin Gehl
Roger Newby
partners / brokers

(M) 206.769.6142 (R) 206.261.3790
staff@portgardneryachts.net

Everett's Professional and Friendliest Yacht Brokerage offering the highest level of customer service possible to boat owners and soon to be boat owners.

Located in one of the largest marinas on the West Coast, Port of Everett, South Marina.

www.crosswateryachtsales.com

O:425.903.3883 M:425.422.3149 | 1720 West Marine Drive Everett, WA 98201

Listings Needed!

FULL-SERVICE YACHT CARE

EVERETT YACHT SERVICE

425-212-9923
EverettYachtService@outlook.com

where RELATIONSHIPS matter
cravenINSURANCE.com

Kathleen Craven
Boat Specialist
kcraven@craveninsurance.com

Clinton Office: (360) 341-7200, ext 223
Lake Stevens Office: (425) 334-7200, ext 223
Toll Free: 1-800-494-7200, ext 223

HARBOR MARINE

(425) 259-3285 • harbormarine.net • Everett, WA

ACCESSORIES • PARTS •
SERVICE • ENGINES • TRANSMISSIONS

BELLINGHAM YACHTS
SALES AND SERVICE

425.609.1100 | BellinghamYachts.com
Located in the Port of Everett off Craftsman Way

MARINE UPHOLSTERY
HEADLINERS HULL-LINERS
CUSTOM INTERIORS
WINDOW BLINDS & TREATMENT
MARINE FLOORING
CANVAS ENCLOSURES & REPAIRS

QUALITY CRAFTSMANSHIP
SINCE 1964

425-353-4227
6323 EVERGREEN WAY EVERETT, WA. HOGLUNDS.COM

WLB WATERLINE BOATS
HOMEPORT FOR HELMSMAN TRAWLERS®

WLB Brokerage -
BOATSHEDSEATTLE • BOATSHEDTACOMA
BOATSHEDEVERETT • BOATSHEDPORTTOWNSEND
WATERLINEBOATS.COM

North Puget Sound Yacht Broker - GRETCHEN MILES CPYB
Successfully assisting buyers and sellers from Edmonds to Blaine. *DISPLAY MOORAGE IN EVERETT

Let me go to work for you - Life's better on a boat!
gretchen@waterlineboats.com 425.231.0344

IN THIS ISSUE

- Central Marina Dredging Opportunity
- Take Boater Access & Facilities Survey
- Jetty Landing Playset Now Open
- Fisherman Jack's Now Open
- Kathy Smith Retires After 15 Years
- New Owner of Your Boat Shop
- EarthCorps Hosts Union Slough Cleanup

EVENTS CALENDAR

- **Sept. 6, 12:** Port Commission Mtgs
- **Sept. 8-10:** Mukilteo Lighthouse Festival
- **Sept. 13:** MSA General Mtg
- **Sept. 23-24:** Everett Coho Derby; MSA Autumn Race
- **Sept. 28:** MYC General Mtg
- **Sept. 30:** Out of the Darkness Walk
- **Oct. 3/10:** Port Commission Mtgs
- **Oct. 4:** EYC General Meeting
- **Oct. 7:** Walk to End Alzheimer's; MSA Autumn Race; Union Slough Cleanup
- **Oct. 11:** MSA General Mtg
- **Oct. 21:** MSA Autumn Race
- **Oct. 26:** MYC General Meeting

FUEL DOCK HOURS

Thru Sept. 4, open 7 a.m. to 7 p.m.; from Sept. 5-30 open 8 a.m. to 4:30 p.m. daily; starting Oct. 1 open 8 a.m. to 4:30 p.m. Tuesday-Saturday.

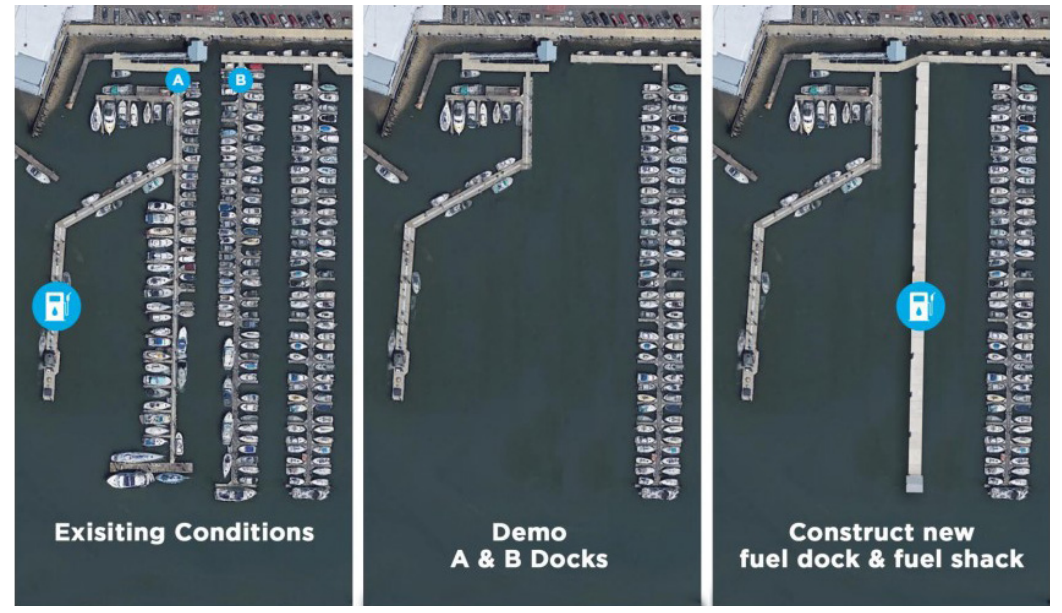
Reminder: On TANKful Tuesdays, all boaters may fill up at 10 cents off per gallon at the Fuel Dock.

BOAT QUOTE

"To have a huge, friendly whale willingly approach your boat and look you straight in the eye is without a doubt one of the most extraordinary experiences on the planet."

— Mark Carwardine, "Last Chance to See"

LET'S GET SOCIAL!



PORT AWARDS \$7.8M CONTRACT TO RECONSTRUCT MARINA FUEL DOCK IN SECOND PHASE OF UPGRADES

The Port of Everett Commission has awarded a \$7.8 million contract to American Construction Co. to relocate and reconstruct the Marina Fuel Dock.

The work, to kick off next summer, represents the second phase of a two-part project to upgrade the aging fuel dock facility that not only supports Everett's thriving boating community, but also fuels national defense.

The first phase of the project is nearing completion now, as two new 30,000-gallon underground tanks have been placed at the west end of the Central Marina parking lot. The diesel tank was installed in July; the gasoline tank followed in August. The existing gas and diesel tanks will be removed next.

Our U.S. Navy partners next door rely on the Port's facilities to refuel smaller naval assets.

The fuel dock also fuels recreational and commercial boating.

The Port of Everett is the largest public marina on the West Coast with 2,300 slips and 5,000 linear feet of guest moorage. Thousands of slipholders, visiting boaters, a range of recreational and commercial fishermen, tourism operators, and commercial vessels like the Hat Island Ferry also fuel up here.

The U.S. Coast Guard, City of Everett Police and Fire Departments, Snohomish County Sheriff's and tribal partners will also benefit from an upgraded fuel dock as they, too, refuel their vessels at the Marina to support critical emergency response in the area.

This next phase of the project includes dock relocation and reconfiguration to enhance

PORT BREAKS GROUND ON MILLWRIGHT LOOP ROAD IN MILLWRIGHT DISTRICT AT WATERFRONT PLACE

On Aug. 2, the Port of Everett kicked off a \$13 million construction project to build infrastructure in the Millwright District — the second and largest phase of the Port's Waterfront Place mixed-use development.

The Millwright Loop Road project includes the construction of roadways, utilities, parking lots, trails, sidewalks and more in the 10-acre district.

First up, Port contractor Interwest Construction Inc. (ICI) will be relocating existing



Continued on page 3



New Jetty Landing Playset Honors Equator

A new ship-themed children's playset in honor of the historic *Equator* was installed at Jetty Landing Park near the boat launch and opened for play on Aug. 18.

The playset, which offers ADA accessible features, includes slides, deck-to-deck climbers, a porthole panel, a nautical bow, a stern climber, a pipe wall and a tower. Pacific octopus and baby orca whale climbers will be installed in the fall.

The dismantling of the deteriorating *Equator* is now underway. Some of the vessel's materials will be salvaged so that she can live on in artwork.

More @ www.portofeverett.com/equator.

Port Inks Deal with Maritime Institute

Maritime Institute has signed a new 10-year lease to site its newest mariner training facility at the Port of Everett's Waterfront Place.

The new satellite at the Port will be the company's first in Washington state. It currently hosts main campuses in Norfolk, Virginia and San Diego, California, plus satellite locations in Alameda, California, and Honolulu, Hawaii.

The Everett site will fill a growing need, providing closer training opportunities for existing and aspiring mariners throughout the Pacific Northwest.

Both classroom and on-the-water instruction for certifications in the maritime industry will take place in Everett. Courses are anticipated to begin in 2024.

Marina Maintenance Relocates Shop

The Marina Maintenance shop has been without a consolidated and permanent home since its location was demolished in 2006 to make room for the Craftsman District Boatyard.

The shop will soon be housed at Waterfront Center. The Port of Everett Commission awarded a \$1.7 million contract to Trico Companies to build out a 5,300-square-

foot shop in the western third of the existing canopy area. #22475

Construction is slated for this fall, with project completion expected next spring.

EarthCorps Hosts Union Slough Cleanup

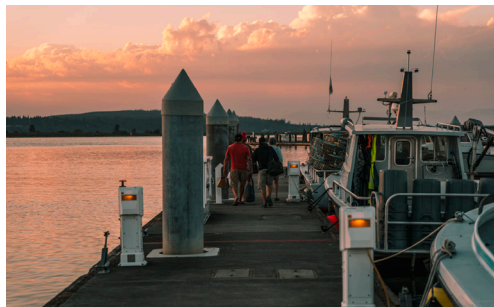
Join EarthCorps to help clean up Union Slough on Oct. 7 from 10 a.m. to 1 p.m.

Volunteers are needed to remove invasive English ivy and Himalayan blackberry at the Port of Everett's Union Slough salt marsh restoration site.

The 24-acre site off Highway 529 and 40th Place NE is a habitat and restoration project that has provided mitigation for several Port projects, including construction of the North Marina in 2007.

The Port partners with EarthCorps to monitor and maintain the health of Union Slough, including hosting work parties to control invasive plants.

Registration is required. Learn more @ earthcorps.org/volunteer.



Take Boater Access & Facilities Survey

The Port of Everett has launched a survey that asks boaters' opinions on the Port's guest boating access and public facilities.

The Port is updating its Boating Access & Public Facilities Plan — which serves as a policy framework and aids in the pursuit of grant funding opportunities.

This survey will help identify priorities and preferences for projects that either improve or add to visiting boater facilities and access. It asks about the boat launch, guest docks, Jetty Island, public restrooms, laundry and shower facilities and more.

Visit @ portofeverett.com/boatersurvey.

Your Boat Shop Gets New Owner

Your Boat Shop at the Port of Everett has a new owner. Dirk Sigurdson has taken over the yacht repair and maintenance shop from Nancy Livingston, who established Your Boat Shop in 2019. The Port Commission approved the new 6¼-year lease on July 11.

An avid boater, Sigurdson is a seasonal slipholder at the Port of Everett Marina and owner of Helm Boatworks. Your Boat Shop is located in Suite 111 of the Waterfront Center.



Port's Kathy Smith Retires after 15 Years

Many congratulations go to Kathy Smith on her retirement from the Port of Everett after 15 years of public service. She retired on Aug. 9.

Smith was hired in 2007 as a Marina Maintenance Helper. She was promoted to Fuel Dock Attendant in 2015 and to Harbor Attendant/Customer Service Representative in 2022.

Kathy's roles over the years have made her one of the Port's most familiar faces on the docks. We have received many compliments about Kathy's friendly demeanor and excellent customer service.

Congrats, Kathy! Thank you for all your hard work. Happy retirement!

Fisherman Jack's Restaurant Now Open

The Asian-inspired Fisherman Jack's restaurant is now open at Waterfront Place.

The restaurant, featuring Chinese favorites made with Pacific Northwest seafood, including dim sum, rice bowls and noodle dishes, is located in a new 6,000-square foot building on Fisherman Harbor's "restaurant row" just south of Hotel Indigo.

Fisherman Jack's is owned by the NGMA Group's Jack Ng and Jin Ma, which also owns and operates The Muse Whiskey & Coffee that recently opened at the Port. The restaurant officially opened on Aug. 31.

Fall Boater Reminders

- ✓ **No vacation rentals allowed.** Slipholders are not permitted to rent out their vessels/slips thru vacation rental booking platforms like Airbnb or VRBO.
- ✓ **Give advanced notice.** If you're a seasonal slipholder, you'll need to notify the Marina Office by the 15th of the month in which you plan to terminate your agreement. #42204
- ✓ **Keep LAZ Parking Informed.** If you have a new license plate, a long trip planned or you've switched marina basins, please notify LAZ Parking of your account changes to avoid a citation.

FALL HOURS

MARINA OFFICE

Monday-Friday: Open 9 a.m. to 4 p.m.

Saturday: Open 9 a.m. to 4 p.m.; closed for lunch noon to 12:30 p.m.

BOAT LAUNCH

Thru Sept. 30, open 4 a.m. to 11 p.m. daily; starting Oct. 1 open 6 a.m. to 7 p.m.

FUEL DOCK

Thru Sept. 4, open 7 a.m. to 7 p.m.; from Sept. 5-30 open 8 a.m. to 4:30 p.m. daily; starting Oct. 1 open 8 a.m. to 4:30 p.m. Tuesday-Saturday.

BOATYARD OFFICE

Open 8 a.m. to 4 p.m.; closed for lunch noon to 12:30 p.m. daily

RESTROOMS

North: FOB Access only

Central & South: Open 6 a.m. to 9 p.m.; 24/7 FOB access; Central to close Sept. 5

Boat Launch & Boxcar Park:

Open 4 a.m. to 9 p.m. daily

BOATING SAFETY | A Message From:



Some of the best boating can be done in the autumn. Fall boating means launch ramps and marinas are less crowded and the scenery puts on a show of color.

The following are some boating safety tips for the fall to help you minimize risks on the water.

Go over navigation tools. Ensure your electronics and paper charts are in good working order.

Assure your lights work. Since the sun sets sooner, you may find yourself cruising after dark.

Make sure your VHF radio is working. Fewer boaters means less available help if there is an emergency.

Check your fuel levels. Some fuel docks in the area close in the autumn.

Watch the weather. Fall storms can appear quickly. If you notice storm clouds, a temperature drop or wind speed increases, get off the water.

Wear your life jacket. Put the vest on over your fall layers.

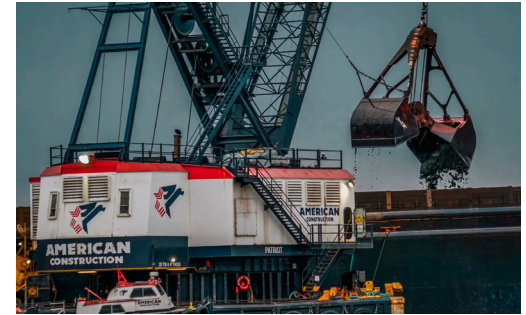
Being a skilled boater requires maintaining your boat and refreshing your knowledge. You can take classes or seminars with Everett Sail and Power Squadron America's Boating Club of Snohomish County. More @ boatclubsnoco.org.

EXPLORING CENTRAL MARINA MAINTENANCE DREDGING

With the Port of Everett Marina situated near the Snohomish River, regular maintenance dredging is necessary to counteract sediment buildup within our facilities. This ensures smooth operations and safe navigation for our boating community. We consistently focus on high-priority areas, addressing them as opportunities arise.

Although Marina maintenance dredging was not originally programmed for this year, we recognize sedimentation in portions of the Central Docks continue to cause challenges at low tide. Our team plans to take advantage of an upcoming window of opportunity to dredge before our existing permit for this area expires next year.

On Aug. 1, the Port put out a solicitation for dredging bids, with bids due Aug. 29. If this process is favorable, we expect to bring a recommendation for contract award to the Port Commission in September. If a contract



is awarded, we anticipate dredging will start in November 2023 and continue through mid-February 2024, with a goal of dredging up to 20,000 cubic yards — equivalent to about 1,250 dump truck loads — of material by clamshell dredge.

Temporary relocation of select moorages and boathouses will be necessary to complete the work. Boaters that could be impacted will be notified and kept informed on next steps.

Fuel Dock: Continued from page 1

the layout for vessels fueling up. In its current location at Central A-Dock, strong currents create challenges when refueling at low tide.

Dock fabrication will begin later this summer with on-site work anticipated to begin in summer 2024.

The scope of work includes the demolition of Central A- and B-Docks, construction of a new 500-foot dock east of the current location, and installation of two additional on-dock fuel dispensers.

A new attendant building with a point-of-

sale system and a new kiosk building with vending machines and a public restroom will also be constructed. The fuel dock will offer commercial and recreational pump-outs which is key to keeping our waters clean. #31430

The existing fuel dock will remain open for the duration of the project. It will be demolished and removed once the new facility is operational.

The Marina Fuel Dock project was awarded a \$5.3 million Department of Defense's Office of Local Defense Community Cooperation grant. This funding will offset the project's nearly \$10 million price tag.

Millwright: Continued from page 1

preload material from the roadway footprint to future construction locations in the Millwright District.

Then ICI will install utilities, pave roadways and temporary trails, expand the Central Marina esplanade (including build-out of two new vistas overlooking the Marina) and construct two gated Central Marina slipholder parking lots, as well as the addition of new sidewalks, lighting and landscape features. This work is expected to run through fall 2024.

Previous work to prepare for this construction was performed by Port contractor Strider Construction and included the import of about 33,000 cubic yards — or about 2,000 dump truck loads — of clean fill dirt known as "preload" to compact the site. The preload prevents settlement after

construction and provides additional material needed to raise the site.

While this project is underway, the Port's private development partner LPC West is preparing to break ground on the mixed-use development, starting with residential next year.

The Millwright District, situated in the uplands between the Central and South Marinas, will feature 60,000+ square feet of new retail/restaurants, 200,000+ sq. ft. of commercial/office space, and 300+ residential units. Private development is slated for the 2024-2027 timeframe.

Please note: After Labor Day, the Central Marina restrooms across from Central F-Dock will no longer be accessible. The new Central Marina restrooms and showers near Hotel Indigo are open for use.