

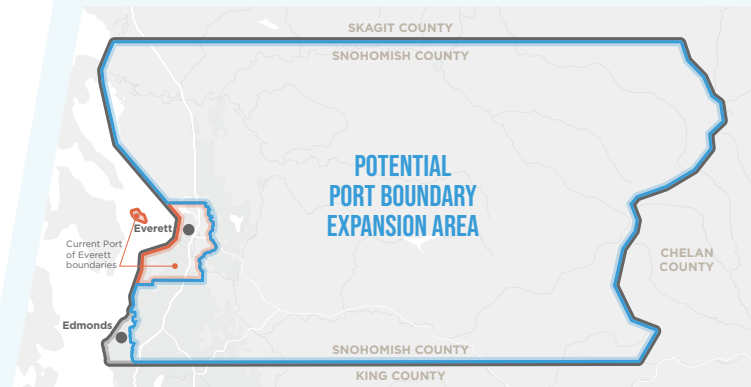
PORT COMMISSION TAKES ACTION TO PLACE BOUNDARY ENLARGEMENT ON BALLOT

VOTERS TO CONSIDER OPENING UP ACCESS TO PORT RESOURCES, INVESTMENT OPPORTUNITY TO MOST OF SNOHOMISH COUNTY

In a historic action on Dec. 19, 2023, the Port of Everett Commission unanimously passed Resolution No. 1220, directing Port staff to submit a proposition to enlarge the limits of the existing Port District to the Snohomish County Council for voter consideration — a first since the citizens voted to create the Port more than a century ago.

The measure, slated for the August 2024 primary, will consider enlarging the Port District to include most of Snohomish County (see map top right).

This decision follows years of discussion on the topic and a recent exploratory effort by the Port to conduct an economic value study and legal assessment of expanding boundaries beyond its current footprint to be better positioned to bring value and economic opportunities to more of the County.



Above: A map showing current Port District boundaries in orange and the proposed enlargement area in blue; the ballot measure will consider enlarging the Port District to all of Snohomish County, excluding Edmonds.

“At this time, only about 15% of the Snohomish County population has access to port economic development tools and resources. The Port of Everett is one of the largest ports in the state that doesn’t serve a county-wide district. This measure, if passed, would allow the Port to make more investment in economic and community priorities across the County – from transportation and supply chain improvements to public access, environmental enhancements and more.”

— **Lisa Lefeber, Port of Everett Executive Director/CEO**

In response to the Port Commission’s petition by resolution to put boundary enlargement up for a vote, Port staff filed the petition with the Snohomish County Auditor in January. On March 12, the petition was unanimously passed by the Snohomish County Council to officially move the measure to the ballot.

WHY PUT IT OUT FOR A VOTE NOW?

As an economic driver and job creator in the region, the Port of Everett is always looking at how it can use the tools and resources unique to ports to create new opportunity and add value to the communities it serves.

The caveat? Ports are limited in their ability to operate or invest in projects outside their district boundary lines.

While many large port districts in Washington state are county-wide — including all other ports in the state that operate international seaports — the Port of Everett is not. Currently, Port boundaries cover most of Everett, portions of Mukilteo, and small parts of Marysville and unincorporated Snohomish County — a total of about 110,000 residents. To put this into perspective, with nearly 830,000 residents and growing, only about 15% of the County has access to port tools and investments.

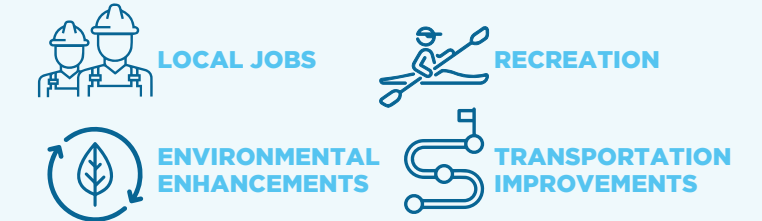
Being located in one of the fastest growing counties in the state, this significantly restricts how the Port of Everett can help advance economic and community priorities across Snohomish County.

The topic of boundary expansion has come up many times in the Port’s more than a century of service, yet there has never been a formal opportunity for residents to weigh in. Given the Port’s limitations, the challenges and opportunities before us, and the general interest heard during recent outreach on the topic, the Port Commission believes it is time to send it to the ballot.

WHAT IS THE COMMUNITY INVESTMENT?

As special purpose districts, ports collect a property tax. Ports are the lowest taxing entities in the County. In 2024, the Port collects 18.8 cents per \$1,000 — or about \$100/year on a \$500K property value. The Port ONLY uses tax dollars for reinvestment back into its Port District community via capital projects, public access and environmental cleanups. Port taxes are not collected on tribal trust lands.

WHAT’S IN IT FOR ME? FUNDING TO INVEST IN...



IF THE MEASURE PASSES, WHAT’S NEXT?

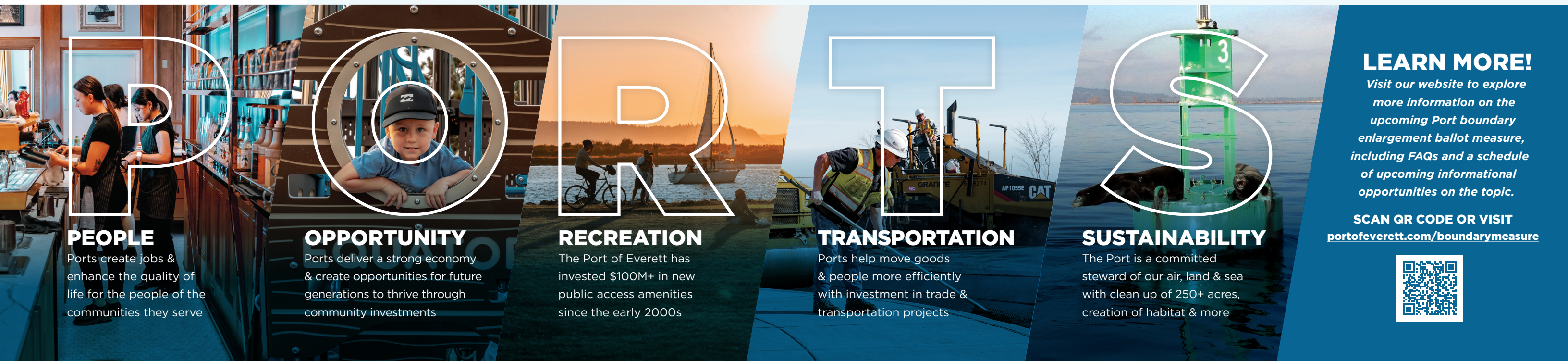
If voters of the proposed enlarged area approve the measure (50.01% or more), the Port would be required to address governance by submitting to the voters the proposition of whether to increase the number of Port Commissioners from three to five to govern the expanded district.

The Port would also reopen its Strategic Plan — a guiding document of strategic priorities and future investments — to ensure the economic and community needs of the enlarged area and feedback of constituents is considered in the Port’s vision and capital investment plan moving forward.

HOW CAN I LEARN MORE & STAY INFORMED?

The Port continues to engage with community members to share information and answer questions. Various public information opportunities will be available through August.

- EAST COUNTY**
May 16, 2024 | 4:30-6:30 p.m.
Monroe Community Senior Center
- SOUTHEAST COUNTY**
June 3, 2024 | 4:30-6:30 p.m.
Willis Tucker Activity Center
- CENTRAL EAST COUNTY**
May 23, 2024 | 4:30-6:30 p.m.
Hartford Hall at The Mill Lake Stevens
- NORTH COUNTY**
June 13, 2024 | 5-7 p.m.
Stilly Valley Center
- SOUTH COUNTY**
May 30, 2024 | 4:30-6:30 p.m.
Lynnwood Convention Center
- CENTRAL COUNTY**
June 20, 2024 | 4:30-6:30 p.m.
Marysville Opera House



PEOPLE

Ports create jobs & enhance the quality of life for the people of the communities they serve

OPPORTUNITY

Ports deliver a strong economy & create opportunities for future generations to thrive through community investments

RECREATION

The Port of Everett has invested \$100M+ in new public access amenities since the early 2000s

TRANSPORTATION

Ports help move goods & people more efficiently with investment in trade & transportation projects

SUSTAINABILITY

The Port is a committed steward of our air, land & sea with clean up of 250+ acres, creation of habitat & more

LEARN MORE!

Visit our website to explore more information on the upcoming Port boundary enlargement ballot measure, including FAQs and a schedule of upcoming informational opportunities on the topic.

SCAN QR CODE OR VISIT

portofeverett.com/boundarymeasure

