

RETAIL DEVELOPMENT

18 MONTH TIMELINE FROM
BREAKING GROUND



LINCOLN
PROPERTY
COMPANY

Retail with a waterfront view

WHY EVERETT?



LARGEST CITY IN
SNOHOMISH COUNTY



DIVERSE
ECONOMY



QUALITY
HOUSING



AMPLE CHILDCARE
FACILITIES



WORKFORCE DEV.
PROGRAMS



VIBRANT
ECONOMY
& CULTURE



LARGEST PUBLIC
MARINA ON
WEST COAST



COMMITTED
FEDERAL/PORT/CITY/
COUNTY LEADERSHIP



NATURAL
DEEP-WATER
PORT



STRATEGIC
SEAPORT



LONGSTANDING
HISTORY OF
COMMERCIAL FISHING



OPERATIONAL
EFFICIENCIES WITH
PORT OF EVERETT



MOST TRADE
DEPENDENT
COUNTY



NAVAL STATION
EVERETT
HOMEPORT



WATERFRONT PLACE



100+

ACRES AT THE
EVERETT WATERFRONT



65

ACRES OF MIXED-USE
DEVELOPMENT UNDERWAY



1.8M

VISITORS PER YEAR
(BASED ON CELLPHONE TRAFFIC)



1.5M

SQUARE FEET OF RETAIL,
RESTAURANT, OFFICE & HOUSING



\$1B+

PUBLIC/PRIVATE
DEVELOPMENT



\$300M

INVESTED TO DATE



2,075

FAMILY-WAGE JOBS
SUPPORTED ONCE COMPLETED



\$8.6M

IN STATE & LOCAL TAXES
GENERATED ONCE COMPLETED

**SPECTACULAR VIEWS, WATERFRONT ACCESS,
RECREATIONAL AMENITIES AND
A WORLD-CLASS MARINA**



RETAIL OPPORTUNITY

As part of the Millwright District, Lincoln is currently developing 38,000 square feet of waterfront retail space situated directly to the north of the residential building. This retail space will be seamlessly integrated with approximately 45,000 square feet of publicly accessible open space, offering a direct connection to the Port Esplanade and the expansive 2+ acre Boxcar Park. Notably, the Port has recently finalized the construction of approximately 20,000 square feet of retail area, all of which was fully preleased upon completion. The retail area has proven attractive to a dynamic range of lifestyle-oriented businesses, including The Muse Whiskey Bar & Coffee Shop, Jetty Bar & Grille, Fisherman Jacks, Sound 2 Summit Brewing, Woods Coffee, and South Fork Bakery.



Coming Soon:

- *Rustic Cork Winebar*
- *Lazyboy*
- *Brewing & Fish Markets*
- *Menchie's*







Features to come soon:

- *Water feature*
- *Fire pits*
- *Outdoor festive lighting*

CURRENT TENANT MIX

RESTAURANTS:

Anthony's Homeport
Anthony's Woodfire Grill
Bluewater Distilling
Covington Cellars | Two Vintners*
Fisherman Jack's
Lazy Boy Brewing Co.*
Lombardi's Italian
Menchie's @ the Marina*
Rustic Cork Wine Bar*
Scuttlebutt Brewing Co
Seas the Day Café
Sound2Summit Brewing
South Fork Baking Co.
The Muse Whiskey & Coffee Bar
Wood's Coffee

MARINE RELATED:

Bayside Marine
Bellingham Yachts Sales
Crosswater Yacht Sales
DeckFX
Everett Yacht Club
Everett Yacht Service & Repair
Freedom Boat Club
Harbor Marine
Heritage Marine Electrical
KayakShare.com
Little House of Canvas
Mariner Marine Services
Marine Power Service
Milltown Sailing Association
OceanGate
Port Gardner Yacht Brokerage

Propulsion Controls Engineering
Puget Sound Composites
Riptide Marine
Waterline Boats
West Coast Yacht Sales
West Marine
Your Boat Shop

RETAIL & OFFICE:

- A+ Hearing Aids
- Anisoptera Spa
- Bay Psychiatric
- Dunlap Industrial Supply
- Engineered Sports Therapy
- Everett Clinic
- Behavioral Health
- Evergreen Moneysource

- Mortgage
- Hotel Indigo
- Inn at Port Gardner
- Laura Lou Massage
- MonkeyFist Market
- Northwest Retina
- Off Planet Research
- Precious Medical Spa
- Water's Edge Salon
- Walters & Wolf
- Western Washington Medical Group





OTHER:

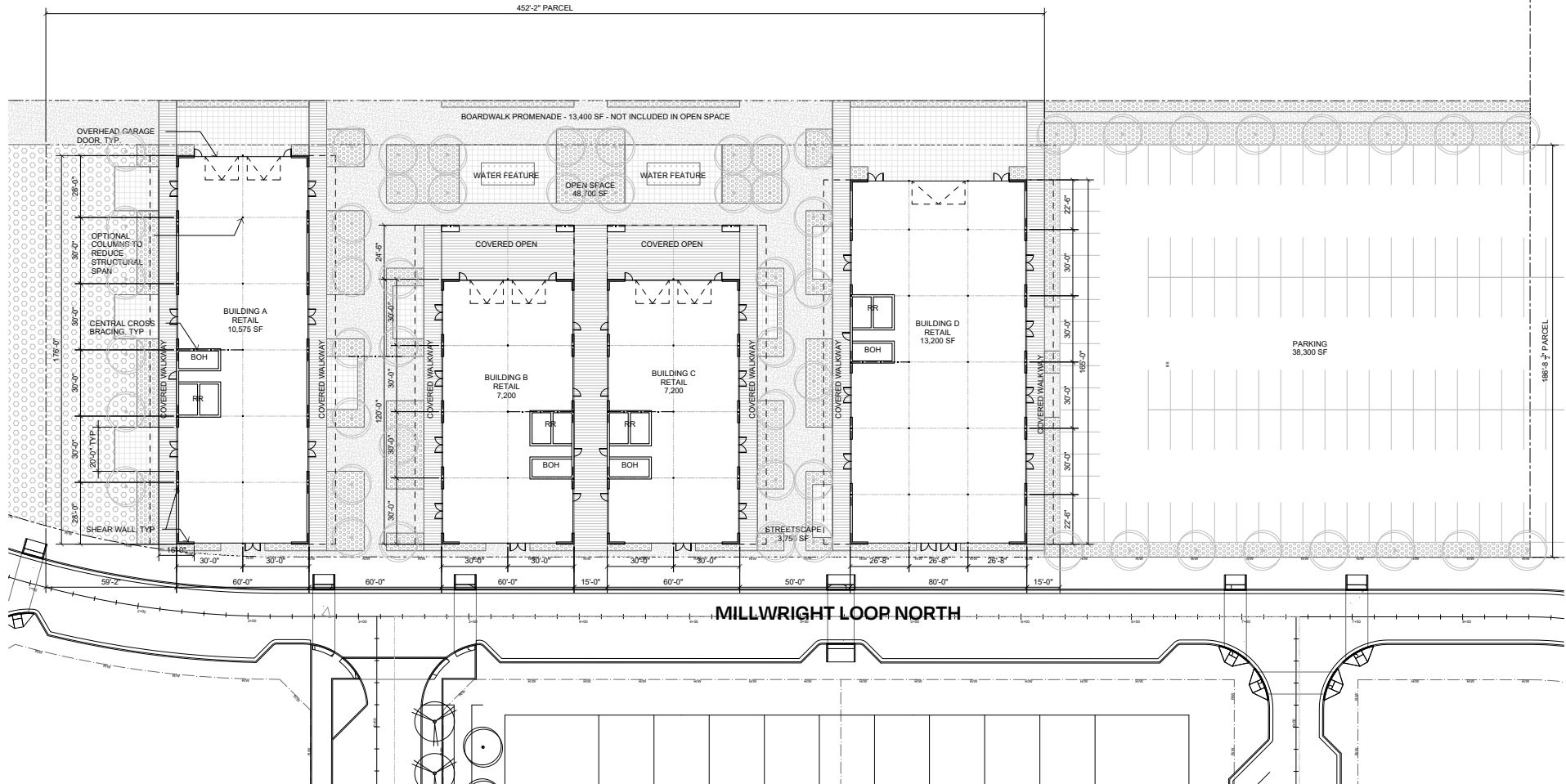
- Everett Community College
- ORCA

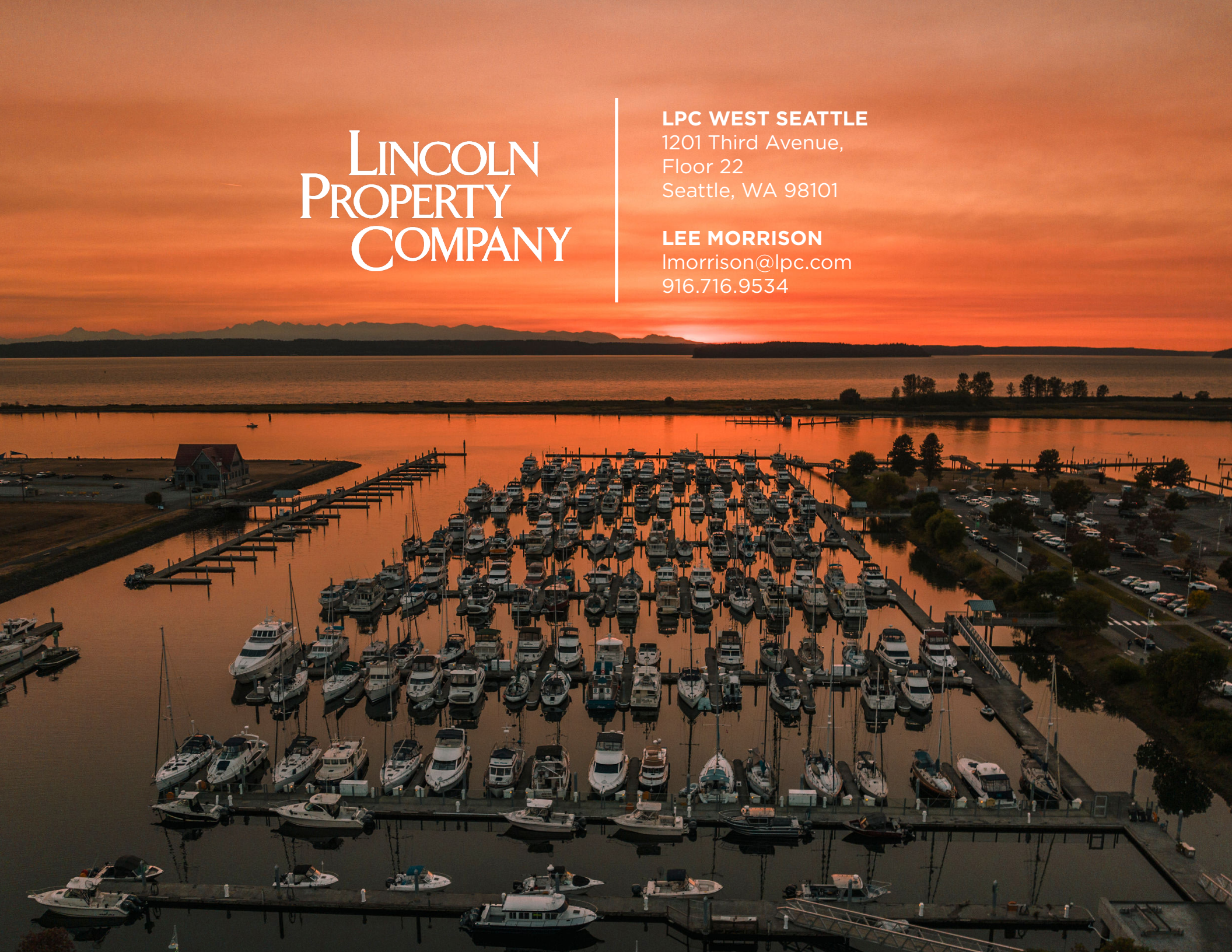


CONCEPT PLAN

LEGEND

- SLAB ON GRADE 
- PAVER 1 
- PAVER 2 
- PLANTING 



An aerial photograph of a large marina filled with numerous boats docked at piers. The scene is captured during a vibrant sunset, with the sky transitioning from deep orange to a lighter, hazy glow. The water reflects the warm colors of the sky. In the background, a range of mountains is visible under the twilight sky. The marina is well-organized with long piers extending into the water, and a parking lot with several cars is visible on the right side.

LINCOLN PROPERTY COMPANY

LPC WEST SEATTLE

1201 Third Avenue,
Floor 22
Seattle, WA 98101

LEE MORRISON

lmorrison@lpc.com
916.716.9534