



Port of EVERETT

WINTER 2025

PORTSIDE

NEW MARINA FUEL DOCK
NEARS COMPLETION P.5

PORT RECEIVES ELECTRIFICATION
GRANT FOR SEAPORT EQUIPMENT P.11

NEW MARITIME INSTITUTE
GRADUATES FIRST COHORT P.13



Two New “Restaurant Row” Buildings Go Vertical | p.6

Pre-leasing Now Available for New Class-A Office Space | p.7

IN THIS ISSUE

3 | ECONOMIC UPDATE
Port Commission approves 2025 budget, capital projects update

4 | PUBLIC ACCESS & RECREATION
2025 events calendar, new vista art at the waterfront, bulkhead rebuild coming soon

5 | MARINA
New Marina Fuel Dock nears completion, Everett Yacht Club celebrates new clubhouse

6,7 | WATERFRONT PLACE
Two "Restaurant Row" buildings vertical, Millwright Loop Roads project complete, Millwright District office now pre-leasing

8,9 | SEAPORT
Port named *2024 Heavy Lift Port/Terminal Operator of the Year*, Japan delegation visit

10,11 | ENVIRONMENT
Maritime-related air emissions see decrease, Port receives electrification grant, project briefs

12 | REAL ESTATE
Pier 3 upgrades, Mukilteo NOAA site update, Fincantieri office lease

13 | WORKFORCE DEVELOPMENT
New Maritime Institute opens and graduates first cohort, Everett at Sea connects students to the water

14, 15 | PORT BRIEFS, EMPLOYEE FOCUS
Employee updates, new hires and milestones, celebrating 150+ years of public service

COMMISSION MEETINGS

Port Commission meetings are held in hybrid format with an in-person and virtual option via the Zoom video conferencing platform. Meetings take place the first and second Tuesday of each month at noon at the Port of Everett's Waterfront Center, 1205 Craftsman Way, in the Blue Heron Room. The public is encouraged to participate.

PORTSIDE TEAM

This issue of Portside, printed in February 2025, was written and produced by the Port's Public Affairs Department and printed by DCG ONE.

Cover:
Longshoremen offload an energy component at the Port of Everett Seaport.

PORT OF EVERETT

1205 Craftsman Way, Suite 200
PO Box 538, Everett, WA 98206
Phone: (425) 259-3164
E-mail: publicaffairs@portofeverett.com
Web: www.portofeverett.com

CONNECT WITH US!



@portofeverett

PORT LEADERSHIP



David Simpson
District 1
Secretary



Tom Stiger
District 2
Vice President



Glen Bachman
District 3
President



Lisa Lefeber
Executive
Director/CEO

PORT REAFFIRMS COMMITMENT TO ECONOMIC VITALITY OF SNOHOMISH COUNTY AFTER VOTE

Despite the Port of Everett's boundary enlargement measure not making it over the finish line during the August 2024 primary election, the Port of Everett remains committed to its important work as an economic driver for Snohomish County and beyond. This was the first time in over 100 years that residents had the opportunity to vote on bringing the value and economic tools of the Port to the greater Snohomish County community. With this outcome, the Port still won't be able to invest outside of its limited boundaries, but will strive to ensure that its advocacy and economic value continue to stretch beyond the Port District.

Over the past 106 years, the Port has invested billions into the local economy and supports more than 40,000 jobs in the region today. The Port will continue to make strategic investments within its existing boundaries as resources allow, with a focus on creating quality jobs, supporting trade and transportation, adding public access amenities, restoring and protecting the environment, and more.

The Port looks forward to continuing to work with its Port District residents, tribal partners, the business community, and municipal partners to continue to add economic value and jobs throughout Snohomish County and the greater region.

2024 YEAR IN REVIEW

- ✓ Earned prestigious title of *2024 Heavy Lift Port/Terminal Operator of the Year* (see p. 8)
- ✓ Welcomed a large delegation from the Port of Nagoya, Japan (see p. 9)
- ✓ Earned *Real Estate Development & Reuse Silver Award* from the International Economic Development Council (see p. 11)
- ✓ Received \$4.3M Port Electrification Grant from Washington State DOT (see p. 11)
- ✓ Participated in the latest Puget Sound Maritime Air Forum (see p. 10)
- ✓ Completed \$3M in stormwater treatment enhancements at the Seaport
- ✓ Celebrated the opening of Everett Yacht Club's new clubhouse (see p. 5)
- ✓ Made significant progress on the new Marina Fuel Dock project (see p. 5)
- ✓ Received Clean Marina Recertification for the 18th year in a row!
- ✓ Broke ground on two new "Restaurant Row" buildings at Fisherman's Harbor (see p. 6)
- ✓ Welcomed four new lease tenants and renewed leases with 15 existing tenants
- ✓ Significant progress on the Millwright Loop Roads project (see p. 7)
- ✓ Granted \$35,000 to community events that drive tourism to the Port District
- ✓ Hosted 91 waterfront events from concerts and movies to fishing derbies, runs, festivals and more
- ✓ Cut the ribbon for the new Maritime Institute and graduated the first Maritime Bootcamp cohort (see p. 13)
- ✓ Established Tax Increment Financing as a tool to help expedite delivery of public access projects and economic growth at the destination waterfront
- ✓ Achieved 26th consecutive clean financial audit

\$73.2M BUDGET PROPELS ECONOMIC DEVELOPMENT, JOB GROWTH

On Nov. 13, 2024, the Port of Everett Commission adopted a \$73.2 million 2025 operating and capital budget that continues to implement the Port's Strategic Plan and overall vision of a vibrant and balanced working waterfront. The budget is funded by business line revenue and only a small percentage from property tax dedicated to projects.

The 2025 budget and financing plan considers anticipated financial implications resulting from current economic factors, including high interest rates and tariffs. It also positions the Port to address the significant opportunities before it to support economic development and jobs, while being mindful of the needs of current operations.

It includes a one-year operating and capital budget, and a five-year capital budget forecast and funding plan. It sets the financial framework for the Port to continue to deliver an economic portfolio that supports and enhances regional maritime assets and commerce at the urban deep-water Seaport and brings new mixed-use amenities to the destination waterfront.

The capital plan includes 31 projects — 29 of which are included in 2025 to advance the Port's Strategic Initiatives. The capital plan places high emphasis on greening the Seaport, continuing to build out destination retail and restaurants at Waterfront Place, recapitalizing and upgrading Marina facilities, exploring economic development opportunities in the Port District, including redevelopment efforts at the Mukilteo waterfront, and continuing to address legacy contamination at the waterfront through environmental cleanup (see below).



2025 CAPITAL PROJECTS

In 2025, the Port of Everett is implementing a capital plan totaling \$27.6 million consisting of work on 29 projects across all Port business lines.

Each of these efforts requires significant investment from the Port, proposing \$98.6 million in capital investment through 2029. This builds on the \$37 million budgeted for capital investment by the Port in 2024, which funded key projects from Pier 3 electrification planning at the Seaport, to breaking ground on two retail buildings at Fisherman's Harbor "Restaurant Row" to advancing the Millwright Loop Roads project.

The totals shown in each category (at right) represent the cumulative planned investments through 2029 in each of the Port Commission adopted strategic initiatives.



SEAPORT MODERNIZATION

Modernize and cleanup Port of Everett Seaport to meet 21st century infrastructure needs and support maritime opportunities

- Mill A Cleanup
- Master Planning
- Electrification, Utility & Modernization Upgrades
- Stormwater Treatment

Total: \$16.7M
2025 Expenditures: \$3.8M



SUSTAINABLE MARINA OPERATIONS

Develop and implement a comprehensive marina services plan to ensure success of marina operations and funding for recapitalization

- Deliver Fuel Dock Reconstruction & Configuration
- Reconstruct Central A-Dock & Guest Docks 1 & 3

Total: \$16.1M
2025 Expenditures: \$3.6M



WATERFRONT PLACE

Continue investment in waterfront community, including primary infrastructure and commercial mixed-use developments

- Public Infrastructure Improvements
- New Retail & Restaurant Buildings
- Millwright District Infrastructure Improvements
- Public Open Space & Art Projects

Total: \$46M
2025 Expenditures: \$14.6M



MAINTENANCE & PRESERVATION OF FACILITIES

Provide for asset replacement, maintenance and preservation in Seaport, Marina and Real Estate divisions

- Seaport Pile & Bulkhead Restoration
- Refresh Buildings, Facilities & Equipment
- SR 529 Bulkhead Improvements along W. Marine View Drive
- Programmatic Dredging

Total: \$18.8M
2025 Expenditures: \$5.1M



ECONOMIC DEVELOPMENT & OTHER PROJECTS

Expand the Port's lease portfolio and enhance under-utilized real estate

- Mukilteo Property Master Planning
- Puget Sound Initiative Environmental Cleanup Program
- North Beach restoration in tidal flats north of 10th Street

Total: \$1.0M
2025 Expenditures: \$0.5M

2025 EVENTS CALENDAR ✂️

MAR. 27
COMMUNITY BUS TOURS

APR. 13
MILLTOWN MARATHON

APR. 19 ●
MARINA & JETTY ISLAND
CLEANUP DAY

APR. 23
AEROSPACE LOGISTICS HARBOR TOURS

MAY 26
MEMORIAL DAY CEREMONY

JUNE 26
WATERFRONT PLACE OPEN HOUSE

JULY 5 - AUG. 31 ●
JETTY ISLAND DAYS (FERRY RUNS WED.-SUN.)

JULY 10, 24 & AUG. 7, 21, 28
THROWBACK THURSDAY HARBOR TOURS

JULY 16, 30 & AUG. 13, 27
WORKING WATERFRONT HARBOR TOURS

JULY 10 - AUG. 28 ●
MUSIC AT THE MARINA CONCERTS (THURSDAYS)

JULY 25 - AUG. 22
SAIL-IN CINEMA OUTDOOR MOVIES (FRIDAYS)

JULY 18+19
ROCK THE BOAT CONCERTS

JULY/AUG. (TBD)
TALL SHIPS

AUG. 1 - 29
PUGET SOUNDS STEEL DRUMS (FRIDAYS)

AUG. 23
WHEELS ON THE WATERFRONT CAR SHOW

SEPT. 5-7
MUKILTEO LIGHTHOUSE FESTIVAL

SEPT. 13
SALMON FOR SOLDIERS DAY OF HONOR

SEPT. 20 + 21
EVERETT COHO DERBY

OCT. 11
WALK TO END ALZHEIMER'S

OCT. 24 ●
HAUNTED HARBOR

OCT. 25
MAKING STRIDES AGAINST BREAST CANCER WALK

DEC. 6
HOLIDAY ON THE BAY

DEC. 7
HOLIDAY ON THE BAY 5K

**VIEW THE FULL LINEUP & EVENT DETAILS
@ PORTOFEVERETT.COM/EVENTS**



MARINA VISTAS GET ARTISTIC TOUCH

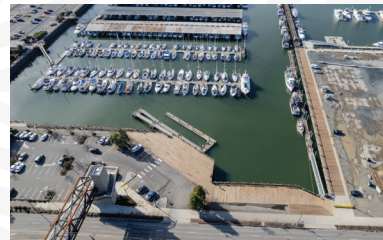
The Port of Everett's waterfront trail system recently got a new look. As part of the Millwright Loop Roads and infrastructure project (see p. 7), the Central Marina esplanade was expanded, including



upgrades to two vistas for public enjoyment. The vistas along the Central Docks have new artwork incorporated that tie together the districts at Waterfront Place. Saw blade art icons pay homage to the site that was the epicenter of Everett's mill town roots in its early days, while anchor art icons embody the historic boat building and commercial fishing industries that have been part of the Everett waterfront since the early 1900s. These longstanding industries and jobs have helped shape the Everett waterfront into what it is today.

Later this year, the Port will add a new bronze statue by Sultan-based artist Kevin Pettelle to the boating-themed vista, inspired by a 1940s photograph of a young girl looking out into the Everett boat harbor. The harbor was located between Piers 1 and 2 at the Port's international Seaport at that time. The bronze statue signifies the evolution of boating at the Everett waterfront while looking ahead to the future of what's to come.

SEGMENT E BULKHEAD, PUBLIC ACCESS EXPANSION PROJECT COMING SOON



The Port of Everett is striving to begin replacement of the Segment E Bulkhead at Port Gardner Landing near the Grand Avenue Park Bridge. The project will replace approximately 165

lineal feet of bulkhead and reconstruct the wharf. Segment E is the last section of bulkhead to be replaced along the Marina as part of an effort that began in 2005 in the Central Marina. Improvements will help protect and reinforce Highway 529, a critical freight and military route. The project will also enhance and expand public access in the high-use space. The Port received a \$2.2 million Federal Highway Administration grant for the project and had originally hoped to complete work in 2025, but bids came in significantly over budget due to federal requirements. While the Port seeks additional funding, the Port completed the required environmental mitigation tied to the project, removing an abandoned 60-foot by 60-foot derelict barge along W. Marine View Drive in early February.

Stay in the loop on the latest Port of Everett news and events! Sign up for our e-mail updates. Visit portofeverett.com/signup or scan the QR code to join the list.





NEW \$8.1M MARINA FUEL DOCK SET TO OPEN MID-2025

The Port of Everett's Marina Fuel Dock replacement and reconfiguration is nearing completion, with the updated facility expected to be open and operational this spring — just in time for another busy boating season.

The \$8.1 million marina capital project is well into its second phase. The Port's contractor for the rebuild, Tacoma-based American Construction Company, has completed in-water demolition at Central A & B-Docks to make way for the new 500-foot dock configuration. New dock floats and pilings were delivered, assembled and installed late last year, to the east of the existing facility.

Remaining work includes installation of on dock infrastructure, including fueling and pumpout equipment. The new dock will feature an additional fuel dispenser with two nozzles and an ultra-high flow fuel station at the south end to support facility demand. In addition to standard pumpouts, a commercial pumpout will be added, becoming one of the only publicly accessible

commercial pumpouts on the Puget Sound — an extension of the Port's efforts to keep our waterways clean. A fuel attendant building and a building for ice and concessions vending, along with signage, will also be added.

This work represents the second phase of the two-part project to upgrade this essential, yet aging, facility. The first phase was completed in 2023 with fuel tank replacement that installed two new 30,000-gallon underground tanks — one for gas and one for diesel.

The Port of Everett Marina Fuel Dock is a critical marine asset that not only fuels Everett's thriving boating community, but supports national defense and local emergency response. Our U.S. Navy partners next door at Naval Station Everett rely on this Port facility to refuel smaller naval assets. The U.S. Coast Guard, City of Everett Police and Fire Departments, Snohomish County Sheriff, and tribal partners also refuel vessels here to support critical emergency response as well.

Due to the fuel dock's regional importance in support of Department of Defense (DoD) assets, the project was awarded a \$5.3 million federal grant from DoD's Office of Local Defense Community Cooperation to help offset costs of the project. The existing fuel dock will remain in operation until the new one is completed.



EVERETT YACHT CLUB CELEBRATES NEW CLUBHOUSE IN SOUTH MARINA

In March 2024, the Everett Yacht Club (EYC) celebrated the grand opening of its new clubhouse near Anthony's Woodfire Grill at the Port of Everett's Waterfront Place.

The new clubhouse was three years in the making. In 2021, EYC leased the Port's former Marina Office building in Marina Village and invested over \$1 million to renovate it. The club's reciprocal moorage moved to South E Dock near the building that same year.

The new multi-story clubhouse at 1720 West Marine View Drive has indoor and outdoor spaces for member meetings, classes and events. It features a kitchen, bar and elevator, plus convenient access to the Port's nearby Commodore Plaza and South Marina facilities.

This site represents the fourth clubhouse for Everett Yacht Club, which formed in 1907. The club was originally located on an offshore float at Camp No. 1 south of Weyerhaeuser Mill A (now the Port's South Terminal). That float was moved between Piers 1 and 2 at the Port of Everett Seaport in 1927, when recreational boating was



sited there. A second clubhouse was built in 1931 west of the Great Northern Railway Depot on Bond Street. Then, in 1968, the club relocated to a new two-story building on 14th Street that also served as a conference center.

This third location housed EYC's clubhouse and other uses for many years before their recent move. This previous site has aged and sustained weather damage, and will be demolished this year. The waterfront development parcel, situated at Wharf's Edge near the Port's Boxcar Park, is slated for future redevelopment in hospitality and tourism.



Going Vertical: Two New “Restaurant Row” Buildings Take Shape at Waterfront Place

Two new buildings within the Port of Everett’s “Restaurant Row” at Fisherman’s Harbor are now vertical — a visual sign that six new dining experiences will soon be welcomed to the waterfront for community enjoyment.

The \$15.2 million construction project that broke ground last summer marks the next phase of retail/restaurant investment at the Port’s Waterfront Place mixed-use development.

One of the two new buildings (A12) is being constructed next door to the Asian-fusion Fisherman Jack’s restaurant and South Fork Baking Co., both of which opened in 2023 along Seiner Drive in Fisherman’s Harbor. The new 12,000 sq. ft. building will soon be home to Rustic Cork Wine Bar, Menchie’s @ the Marina, Alexa’s Cafe and Tapped Public House.

The second building under construction to the south (A6) is adding another 6,000 sq. ft. at the corner of Seiner and West Marine View drives near the Grand Avenue Park Bridge. This site will house The Net Shed, a new fish and chips bar and fresh fish market, with the balance of the building still available. The Port is seeking a Mexican-flavor dining experience or local tasting room with lite bites to occupy this space.

Port contractor for the builds, Lynden-based Faber Construction, is expected to reach substantial completion on both buildings in summer 2025, with tenant improvements to follow. Businesses are expected to start rolling openings as their improvements wrap up through late 2025 and into early 2026.

Bayside Marine Wins Gold from Seattle Times



Congratulations to Bayside Marine for winning Gold in The Seattle Times’ 2024 Best of the PNW Awards for “Best Motor Service/Repair Shop”! This family-owned business has been a fixture on the Port of Everett waterfront for 57 years, offering full-service repairs, parts, indoor boat storage, and both used and new motor sales.

Anthony’s HomePort Wins Multiple Restaurant Awards



Congratulations to Anthony’s HomePort Everett for winning multiple honors in The Seattle Times’ 2024 Best of the PNW Awards!

The beloved waterfront restaurant earned Gold for “Best Waterfront Dining” and “Best View,” and Bronze for “Best Seafood Restaurant” and “Best Outdoor Dining.”

NGMA Group Honored at Family Business Awards



The NGMA Group was recognized as a 2024 Family Business Award Honoree by the Puget Sound Business Journal. In 2023, the NGMA Group opened not one, but two restaurants at the Port’s Waterfront Place: the Asian-fusion restaurant Fisherman Jack’s and The Muse Whiskey & Coffee, inside the restored historic Weyerhaeuser Building.

Port Completes \$13M Millwright Loop Roads Project, Prepares for Next Wave of Private Development

The Port of Everett has wrapped up final work on the construction of its Millwright Loop Roads project. The \$13 million project constructed roadways, installed utilities, expanded the Central Marina esplanade and public vistas (see pg. 4), built two Central Marina parking lots, and added new sidewalks, lighting, and landscaping.

This work, made possible through bond financing from the Snohomish County Treasurer's Office, was essential in moving the Port's \$1 billion public/private Waterfront Place mixed-use project into its second and largest phase at the 10-acre Millwright District.

The Port's private development partner, Lincoln Property Company, is preparing to break ground later this year, starting with a 313 residential unit building with ground



floor retail spaces. Larger Class-A office and retail site design is also underway, with office pre-leasing out to market for up to 120,000 sq. ft. (see below). The Millwright District represents the main job center at Waterfront Place, and the site's long and cherished history will be infused into District architecture, street names and more.

Port, Lincoln Property Company Launch Office Pre-leasing at Waterfront Place



The Port of Everett and private development partner, Lincoln Property Company (Lincoln), are excited to launch pre-leasing for up to 120,000 sq. ft. of commercial office space in the new Millwright District at Waterfront Place.

Located at the heart of the Port of Everett's \$1 billion Waterfront Place mixed-use development in the City of Everett, the 10-acre Millwright District offers a unique waterfront setting at the largest public marina on the West Coast.

Companies can now secure their spot for custom Class-A suites ranging from 5,000 to 120,000 sq. ft. in up to three interconnected buildings. The office complex offers on-site structured parking, rooftop terraces, community conference rooms, a fitness center, and a wide array of surrounding employee amenities, including dining, retail, entertainment, recreation, and housing.

"For companies looking to expand or stand-up satellite campuses closer to their workforce, now is the time to get in on the ground floor in the fastest growing county in the state," Port of Everett Executive Director/CEO Lisa Lefebvre said. "With back-to-office mandates on the rise and quality employees tired of long commutes, Everett offers an alternative downtown experience between the Seattle and Vancouver, B.C. markets, with everything a big city has to offer."

Everett is the largest city in Snohomish County, and has a skilled workforce, diverse economy, and vibrant culture. It is regarded as one of the key cities in the greater Seattle metro area, with continued expansion expected over the next 20+ years and a growing population to help attract quality new employers to Waterfront Place.

"The new campus development at the Port offers companies a rare opportunity for Class-A, waterfront office space in business-friendly Everett, with its robust economy fueled by aerospace, maritime, military, advanced manufacturing, energy and green tech," said Alex Aigner, Executive Vice President with Lincoln's Pacific Northwest division. "The Project offers a truly unique experience in the Puget Sound Region, with flexible space for companies of all sizes, a prime location along the shoreline, complete with stunning views of Port Gardner Bay and direct access to popular retail, restaurants, and outdoor recreation."

Office development needs to be 80% pre-leased prior to construction. Once underway, it will take two years to build.

Learn more & get on the Millwright District Office Pre-leasing List at portofeverett.com/office



PORT OF EVERETT NAMED HEAVY LIFT PORT/TERMINAL OPERATOR OF THE YEAR

The Port of Everett Seaport has been honored with the prestigious title of 2024 Port/Terminal Operator of the Year by Heavy Lift and Project Forwarding International.

Recent maritime investments, quality customer service, high environmental standards, and a strong commitment to handling heavy lift and project cargoes safely and efficiently were among key factors in the Port of Everett earning this top honor.

“Congratulations are in order for the Port of Everett, which scooped the 2024 Port/Terminal Operator of the Year award,” said David Kershaw, Editor of Heavy Lift and Project Forwarding International. “The Heavy Lift Awards recognizes the very best that the project logistics and specialized transport sector has to offer and in this hotly contested category, our judges acknowledged the Port of Everett for its diversified operations and strong investment in project and breakbulk facilities. With more than \$150 million invested to modernize seaport facilities and expand capabilities over the past decade, the gateway is well positioned to play a vital role in the heavy lift and project cargo supply chain, both now and in the future. This recognition is well deserved.”

The Port of Everett Seaport is the third largest container port in Washington state, and is the region’s premier breakbulk cargo facility for its niche in handling high-value, conventional and overdimensional cargoes in support of the



Above: Port of Everett Executive Director/CEO Lisa Lefeber (center) accepts Port/Terminal Operator of the Year award on behalf of the Port team.

aerospace, manufacturing, military, construction, agriculture and energy industries. Most notably, the Port serves as an extension of the regional aerospace manufacturing process, handling all oversized aerospace parts for the 767, 777, 777X and K-C Tanker programs.

Over the past decade, the Port has invested more than \$150 million to modernize and green its facilities to further support local aerospace logistics, expand cargo opportunities and provide flexible infrastructure to support industry and emerging project cargo.

Most recently, the Port opened its new 40-acre Norton Terminal in 2022. This marked the first all-new cargo terminal to open on the West Coast in more than a decade, adding critical cargo capacity to the national freight network to enhance movement of commerce throughout the global supply chain.

GO BIG.
GO EVERETT.



\$21B
WORTH OF EXPORTS
ANNUALLY



#2
EXPORT CUSTOMS
DISTRICT IN
WASHINGTON STATE



PORT COMMISSION REACTION

THIS AWARD HIGHLIGHTS THE PORT OF EVERETT'S COMMITMENT TO OUR CUSTOMERS AND OUR REGION, AS WELL AS OUR LONG-TIME DEDICATION TO PROVIDING SUPERIOR CUSTOMER SERVICE AND HANDLING CARGO WITH CARE. THE PORT SUPPORTS UPWARDS OF \$21 BILLION IN ANNUAL EXPORTS AND MORE THAN 40,000 JOBS, FURTHER CEMENTING THE SIGNIFICANCE OF OUR SEAPORT AS SNOHOMISH COUNTY'S ONLY GLOBAL GATEWAY.

Tom Stiger, Port Commission Vice President

THIS LEVEL OF INDUSTRY RECOGNITION IS A HUGE ACHIEVEMENT FOR THE PORT OF EVERETT. THIS AWARD IS A TESTAMENT OF OUR TEAM'S HARD WORK AND DEDICATION IN DELIVERING OUR MISSION OF BRINGING NEW ECONOMIC OPPORTUNITY AND JOBS TO THE REGION THROUGH MARITIME INVESTMENTS THAT NOT ONLY ENHANCE THE GLOBAL MOVEMENT OF GOODS, BUT ALSO, DOES SO IN A WAY THAT PROTECTS OUR ENVIRONMENT INTO THE FUTURE.

David Simpson, Port Commission Secretary

IN MY TIME SERVING THE PORT INDUSTRY, I'M BLOWN AWAY SEEING AND EXPERIENCING THE BREADTH OF WHAT THE PORT OF EVERETT IS CAPABLE OF, SPECIFICALLY IN ITS HIGH AND HEAVY PROJECT CARGO HANDLING FOR MAJOR INDUSTRIES — FROM AEROSPACE AND MILITARY TO CONSTRUCTION, ENERGY AND BEYOND. IT'S AN INCREDIBLE HONOR TO RECEIVE THIS INTERNATIONAL RECOGNITION AND BE CELEBRATED AMONG OUR PEERS.

Glen Bachman, Port Commission President

The \$40 million investment in Norton Terminal completed environmental cleanup and redevelopment of the former Kimberly-Clark mill site into a maritime hub that supports 950 jobs and doubled the Port's cargo-handling footprint.

It also fully realized the Port's \$57 million investment in its South Terminal modernization that added another full-service berth in Everett in 2021. That project strengthened an underutilized wharf, added infrastructure for shore power and two, 100-foot-gauge gantry cranes to support aerospace logistics, handle heavier cargoes and facilitate cargo diversification.

"Earning this title is an honor," said Carl Wollebek, Chief Operating Officer at the Seaport. "This award is a true testament of the collective effort our team puts in every day to better serve our customers, tenants and the greater community. With more than 60% of jobs tied to trade in Snohomish County, we continuously look for ways to expand our cargo handling capabilities and keep freight moving efficiently."

The Port of Everett has been a shortlist candidate in the *Port/Terminal Operator of the Year* award for the past five years, earning "highly commended" in the category in 2022.

The Heavy Lift Awards took place October 23, 2024. More than 350 industry professionals gathered to connect on maritime business and celebrate the major achievements of the award winners among 10 award categories.



PORT OF EVERETT HOSTS NAGOYA DELEGATION ON INTERNATIONAL TOUR

On Aug. 26, 2024, the Port of Everett hosted a delegation from Port of Nagoya, Japan during an international tour that also included stops in Panama and Los Angeles.

The Everett visit featured meetings and tours with local aerospace partners, discussions with Port and City officials, and a harbor tour highlighting the more than \$150 million in infrastructure upgrades at the Port of Everett Seaport since the last delegation visit in 2013. The group was pleased to see the significant seaport infrastructure upgrades that have been completed at the Port since that time.

The ports have a longstanding trade partnership supporting weekly shipments between Nagoya and Everett for nearly three decades in support of aerospace manufacturing in the Pacific Northwest. The Port of Nagoya is Japan's largest port and a key logistics hub, while the Port of Everett specializes in handling oversized cargoes, including aerospace. This partnership supports thousands of local jobs and billions in economic impact, as the Port of Everett Seaport handles all of oversized parts for the 767, 777, 777X and KC-46 military aircraft.



#5

**EXPORT CUSTOMS
DISTRICT ON THE
WEST COAST**



3RD

**LARGEST CONTAINER
PORT IN WA STATE**



NEW REPORT SHOWS MARITIME-RELATED AIR EMISSIONS CONTINUE TO DECREASE IN THE PUGET SOUND REGION



A new report released by the Puget Sound Maritime Air Forum highlights a continued decrease in maritime-related air pollutant emissions across the Puget Sound region, through 2021. The Puget Sound Emissions Inventory (PSEI) report, compiled through a collaborative effort involving seven ports, six government agencies, and three industrial partners, reveals reductions in emissions across various maritime sectors when compared to data from 2016 and 2005.

Key findings from the PSEI reveal an 82% reduction in diesel particulate matter and a 10% decrease in greenhouse gas emissions from port and maritime sources throughout the greater Puget Sound area since 2005. These positive trends reflect the collective commitment to environmental stewardship demonstrated by Puget Sound ports, government entities, and the maritime industry at large.

The decline in emissions is attributed to strategic investments in electrification, cleaner engine technologies, operational efficiencies, and the implementation of the North American Emissions Control Area regulation, which requires vessels to burn lower sulfur fuels while within 200 miles of shore.

EMISSIONS REDUCTION THROUGHOUT THE YEARS

The PSEI is conducted every five years, and the most recent inventory in 2021 came during an unusual year for the maritime industry in the wake of the COVID-19 pandemic. Supply chain disruptions worldwide impacted shipping at Puget Sound ports, leading to changes in cargo throughput, and increased the amount of time ships spent in port and at anchor than in previous years. 2021 also saw a smaller cruise season after shutdown in 2020.

The PSEI was established in 2005 to set a baseline understanding of maritime and port related emissions that would inform the development of emission reduction programs. Subsequent inventories every five years are critical for tracking progress and redirecting emission reduction efforts as necessary. The inventory assesses

a range of pollutants that impact air quality and climate change, including nitrogen oxides (NOx), volatile organic compounds (VOC), sulfur dioxide (SO₂), diesel particulate matter (DPM), black carbon (BC), and greenhouse gases (CO₂e), associated with ships, harbor vessels, cargo-handling equipment, rail, heavy-duty trucks, and other fleet vehicles engaged in maritime activities.

While participation is voluntary, the Port of Everett has opted to take part in the reports since the start to better understand and support the collective efforts to reduce airshed impact.

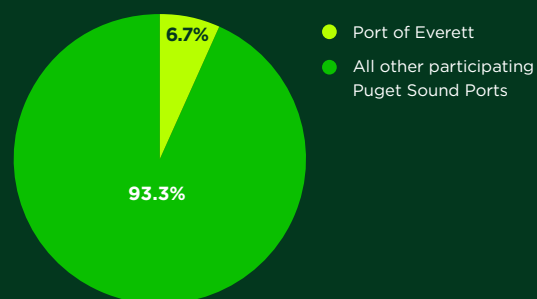
“The Port of Everett is committed to greening the supply chain and reducing our carbon footprint,” Port of Everett Executive Director/CEO Lisa Lefebvre said. “With over \$150 million invested in Seaport modernization in recent years, we’ve achieved diverse environmental benefits and advanced our climate change strategy. During the pandemic supply chain crisis, we handled excess cargo with lower emissions per unit — delivering cargo with a lower carbon footprint than any past inventories. We look forward to continuing this important work.”

LEARN MORE & SEE FULL REPORT @
[PUGETSOUNDMARITIMEAIRFORUM.ORG](https://pugetsoundmaritimeairforum.org)

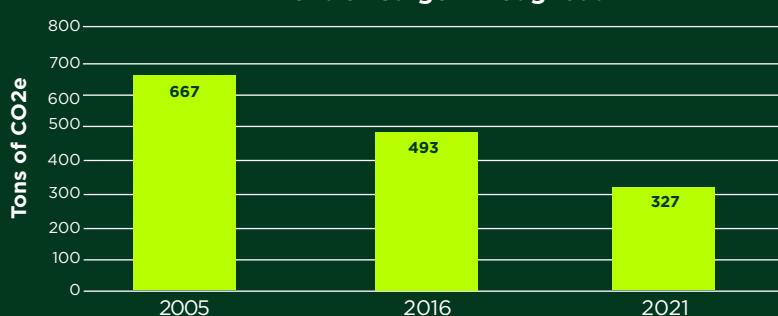
Port of Everett Seaport Sees Emissions Reduction Per Cargo Unit ↓

In response to the West Coast supply chain congestion associated with the COVID-19 pandemic, the Port of Everett handled a dramatic increase in cargo levels. Between 2016 and 2021, the Port saw a nearly 300% increase in metric tons of cargo. Despite this increase, the Port of Everett demonstrated emissions reductions across all emission parameters on a per cargo unit metric. In 2021, per 10,000 metric tons of cargo, CO₂e emissions reduced by 34% since the 2016 inventory, and 51% since the baseline study performed in 2005. Since the 2005 inventory, the Port also reduced its total emissions of SO₂, CO, VOC, PM₁₀, PM_{2.5}, and DPM.

CO₂e Emissions by Participating Ports



Port of Everett CO₂e Emissions per 10,000 Metric Tons of Cargo Throughput



PORT OF EVERETT RECEIVES \$4.3M PORT ELECTRIFICATION GRANT FROM WASHINGTON STATE DEPARTMENT OF TRANSPORTATION



The Port of Everett has received a \$4.3 million grant from the Washington State Department of Transportation (WSDOT) to support the electrification of its international Seaport.

This grant money will be used to help fund a \$5.8 million project to construct charging infrastructure at the Port's South Terminal, procure its first zero-emissions electric yard trucks and

fund cleaner diesel-powered equipment that will allow Port tenant Everett Ship Repair the ability to use electric shore power for their operations.

"This investment by Washington State into the Port of Everett's seaport will reduce

carbon emissions from maritime operations and build a foundation to continue to green our supply chain," Port of Everett Executive Director/CEO Lisa Lefeber said. "A special thanks to our partners at WSDOT for their support and confidence in the Port of Everett's efforts to reduce air emissions from our operations."

The Washington Port Electrification Program was created by the Washington State Legislature in 2023 and is supported with funding from Washington's Climate Commitment Act. The CCA supports Washington's climate action efforts by putting cap-and-invest dollars to work reducing climate pollution, creating jobs, and improving public health. Information about the CCA is available at www.climate.wa.gov.

Everett's legislative delegation supported the creation of the grant program. The award announcement was immediately celebrated for its contributions to greenhouse gas reductions, infrastructure investment, and increase of family-wage jobs.

WEYERHAEUSER MILL A CLEANUP UPDATE



The Weyerhaeuser Company's former Mill A site, located at the south end of today's Port of Everett Seaport, is at the top of Washington state's environmental cleanup list. For more than a decade, the Port has been participating in an agreed order process with the Washington State Department of Ecology to conduct studies needed to determine cleanup options for the site that encompasses the Port's South and Pacific Terminal berths. In November 2024, and following a public review and comment period, Ecology issued its final Cleanup Action Plan for the marine area portion of the site. The contamination that will be cleaned up stems from the former on-site mill operations. To support this effort, the Port has been working under the first-ever extended grant agreement from the state, which gives project funding requests the highest priority of all state funded cleanup sites. Additionally, the Port is in active litigation to recover past and future cleanup costs from the Weyerhaeuser Company for this site.

PORT EARNS TWO INTERNATIONAL ENVIRONMENTAL ACHIEVEMENT AWARDS

The Port of Everett received two Excellence in Economic Development Awards from the International Economic Development Council last year.

Real Estate Development & Reuse Silver Award *Norton Terminal Development & MTCA 3rd Interim Action Cleanup*

Norton Terminal opened in 2022 and marked the first all-new cargo terminal to open on the U.S. West Coast in more than a decade. The \$40 million investment involved the environmental cleanup and redevelopment of the former Kimberly-Clark mill site. The once-contaminated property nearly doubles the Port's cargo-handling capacity and supports more than 950 jobs, while also supporting sustainability. The work involved the final upland cleanup of legacy contamination at the site and the installation of a 9-inch-thick pavement environmental cap. It incorporated environmental controls and state-of-the-art stormwater treatment for the first time in the property's history.

Innovative Economic Development Bronze Award *Blue Heron Slough Habitat Restoration*

In 2022, the Port returned 353 acres of former farmland to its natural condition as estuarine habitat to aid in Chinook salmon and bull trout recovery and support food supply for Southern Resident orcas. This work reconnected the former estuary to the Snohomish River sloughs. The \$20 million investment improves water quality, provides flood protection in the area, increases bird habitat and offsets greenhouse gas emissions. It also acts as a mitigation bank, balancing economic development with a healthier environment.



PORT OF EVERETT'S PIER 3 UPGRADES LOOK TO ELECTRIFY SHIPYARD, REDUCE EMISSIONS

The Port of Everett's Pier 3, which serves Port tenants Everett Ship Repair (ESR) and Heidelberg Materials (formerly Lehigh Cement), is in need of structural repairs to extend the life of the critical maritime facility. This spring, the Port will be applying for a federal Port infrastructure grant to strengthen the dock. In addition to the dock upgrades, the Port will be embarking on a \$5 million companion project to electrify the pier to reduce carbon footprint, funded in part through a program supported by Washington's Climate Commitment Act (read more on the CCA on pg. 11).

ESR is a full-service shipyard with a Master Ship Repair Agreement and can work on both military and commercial vessels. Diesel generators are currently the main power source at the shipyard. Electrifying Pier 3 will minimize the need for their use — further reducing the Port's carbon footprint and improving power resiliency. It is estimated that over 630 tons of carbon dioxide will be eliminated in the first year alone once Pier 3 is electrified. The exact Pier 3 electrification completion date will be determined by the long-lead electrical components. The Port expects to bid this project in April.

This project is funded, in part, from community project funds from the Washington State Legislature in 2023 to expedite plans to electrify Pier 3 and modernize the Seaport. Over the last few years, the Port has installed similar infrastructure to support the future of shore power as part of its Seaport Modernization efforts at its South and Norton Terminals. Both terminals are fully equipped with the infrastructure to support the future electric plug-in capabilities to serve an emerging market of all-electric harbor craft.

EVERETT SHIP REPAIR AND SISTER COMPANY ONLY WASHINGTON STATE SHIPYARDS THAT SUBMITTED TO BUILD NEW WASHINGTON STATE FERRIES

Everett Ship Repair, and its sister company Nichols Brothers Boat Builders, are the only Washington state-based bidder in the running to build Washington State Ferries' future hybrid-electric fleet. If awarded the work, ESR would construct ferry hulls, assemble vessels, and conduct testing and sea trials at the Port of Everett, creating thousands of local job opportunities. The other two bidders are in the Gulf and Philadelphia.

OFFICE WITH A VIEW!

PORT OF EVERETT SEAPORT TENANT, EVERETT SHIP REPAIR, RECENTLY PURCHASED DECOMMISSIONED WASHINGTON STATE FERRY, THE *ELWHA*. THE SHIPBUILDER PLANS TO RETROFIT THE FAMED VESSEL INTO A FLOATING WAREHOUSE AND OFFICE SPACE AT ITS HEADQUARTERS AT THE PORT'S PIER 3.



FINCANTIERI MARINE REPAIR INKS LEASE TO SUPPORT NAVY



Fincantieri Marine Repair (FMR) expanded its presence to the Port last year, marking its first location in Washington state to support U.S. Navy assets. The Navy plans to homeport up to 12 new Constellation-class frigates at Naval Station Everett. Fincantieri was awarded a \$795 million contract in 2020 to build a Constellation-class frigate with options for up to nine additional vessels. Delivery of Fincantieri's first frigate, the future *USS Constellation*, is expected in 2028. FMR's Port office will provide post-delivery support and training.

MUKILTEO NOAA SITE RETURNING TO PORT



Land along the Mukilteo waterfront formerly slated for a NOAA research facility will soon be transferred back into Port ownership. The site, which was part of the Mukilteo Tank Farm transfer from the U.S. Air Force to the Port of Everett back in 2013, was conveyed to NOAA to support one component of revitalization at the waterfront with investment in a research facility. With NOAA's 2021 decision to not proceed, per the existing agreement, the Port and NOAA have been working through the process to transfer the property back to the Port to support redevelopment. The transfer is expected to be finalized this spring, and Port and City partnership discussions continue. With this parcel added back into Port landholdings in Mukilteo, and waterfront redevelopment still in early planning stages, the Port continues to explore ways to add amenities for community enjoyment.

What activations do you want to see? E-mail ideas to publicaffairs@portofeverett.com



Above: Representatives from the Maritime Institute, Port of Everett and City of Everett celebrate the grand opening of Maritime Institute in May 2024.

MARITIME INSTITUTE EVERETT OFFICIALLY LAUNCHES, CELEBRATES INAUGURAL GRADUATING CLASS

Last spring, the Maritime Institute opened its doors at the Port of Everett's Waterfront Place — marking its first-ever mariner training facility to set up shop in Washington State. Maritime Institute Everett, at 1130 W. Marine View Drive, is located within the Port's Maritime, Exploration and Innovation Complex in the Craftsman District. The facility includes a 6,000-square-foot space for classroom instruction and adjacent outdoor space with water access for active training.

The new location at the Port of Everett marks Maritime Institute's fifth campus in the United States. The company also has main campuses in Norfolk, Virginia and San Diego, California, plus satellite locations in Alameda, California, and Honolulu, Hawaii.

The Everett facility fills a growing need, providing closer-to-home training opportunities for existing and aspiring mariners located in Washington and throughout the Pacific Northwest.

"We chose Everett as our latest expansion market because of the rich maritime heritage of the Pacific Northwest," Maritime Institute CEO Dave Abrams said. "Washington's maritime sector includes about 2,300 companies employing over 62,000 workers. Additionally, nearly 700 fishing and seafood operations are located in Washington; Washington

has the highest per capita boat usage in the nation with over 250,000 registered vessels; Washington State Ferries is the largest public ferry operation in the United States; of the 117 shipyards in the U.S., nearly a quarter are located in Washington state. That means there is a big demand for training — and that is what we do."

The Maritime Institute trains more than 10,000 mariners across its sites annually. They offer 150+ courses, authorized by the U.S. Coast Guard and U.S. Navy, including all aspects of vessel operations including deck, engineering, life safety and small arms. The company is also a certified Global Wind Organization training provider for the offshore wind market and offers courses through its BoaterU program for recreational mariners.

Classroom and field instruction at Everett leads to 25 recognized certifications for the maritime industry. One of the key programs that is offered in Everett is the Mariner Bootcamp — a four-week training program that puts students with little to no experience on a career pathway in maritime.

FIRST MARINER COHORT GRADUATES FROM MARITIME INSTITUTE AT PORT OF EVERETT

In late October 2024, Maritime Institute Everett graduated its first Mariner Bootcamp cohort at its new Port of Everett location.

The four-week program is designed to produce fully credentialed and professionally trained mariners qualified to join any U.S. Merchant Vessel at entry level. Congratulations to the six mariners who graduated in October as part of the inaugural cohort, all of which received their U.S. Coast Guard Merchant Mariner Credential along with a job offer at graduation — their first step in entering the maritime workforce.

Learn More & Register for Upcoming Training Courses at maritimeinstitute.com



EVERETT AT SEA: FORGING THE NEXT GENERATION OF SAILORS

Youth living in Everett's Casino Road neighborhood are about a 15-minute drive from the Port of Everett waterfront, yet many have never seen or touched the water. Sound Experience and Connect Casino Road teamed up a couple years back to change that, launching the Everett at Sea program that takes youth from the area on a weeklong voyage aboard the tall ship *Adventuress* from the Port of Everett Marina each August.

Everett at Sea is designed to inspire teens to explore environmental science and maritime-related career opportunities while learning how to sail a tall ship. As crewmembers-in-training, they get hands-on experience with marine debris, ocean acidification, sail theory, navigation and tying knots. For six days they get to live, eat and sleep on the 133-foot sailing ship, make new friends, and gain community, teamwork and self-confidence. The Port is proud to partner on this important maritime education program to connect our future leaders with the water and maritime jobs.





PORT STAFF RECEIVE MARITIME CERTIFICATIONS

Last fall, six Port of Everett team members earned their Maritime Port Executive (MPE) Certification through the International Association of Maritime & Port Executives. The program covers all aspects of port executive management, from the day-to-day functions and logistics to the near and long-range planning required to run a successful seaport — all with a focus on the critical role ports play in the global transportation system and within their respective communities. Way to go (left to right, above) Adam LeMieux, David Schmidt, Catherine Soper, Elise Gronewald, Monique Liard and Cara Craig!



PORT EMPLOYEES RECEIVE PROJECT MANAGEMENT CERTIFICATIONS

Congratulations Port staff members Ashley Bisset, project coordinator (left), and JoDina Mueller, marina customer service representative (right), who earned their Project Management certifications through Everett Community College's Corporate and Continuing Education Center last spring.

NEW CHIEF ADMINISTRATIVE & FINANCIAL OFFICER JOINS PORT TEAM



The Port hired Monique Liard as its new Chief Administrative & Financial Officer in May 2024, replacing Eric Russell after his retirement in early spring. This role manages the Port's \$73.2 million operating and capital budget, while also overseeing all financial, risk management, purchasing, HR and information technology functions of the Port. The CAFO position works to advance Port priorities across all business lines and directs staff implementation of services, policies, procedures and programs. In her position, Liard also now serves as the Port Commission-appointed Auditor and Treasurer. Liard, who joined the Port of Everett team on May 31, 2024 brings 18 years of experience as a Chief Financial Officer. Prior to joining the Port, she served as the CFO for the Spokane Transit Authority.

THE FUTURE IS BRIGHT: PORT INTERNS & SEASONALS LEARN ON THE JOB



In 2024, the Port of Everett hired 20 seasonal employees and two interns to gain experience across various departments, including Marine Terminals and Marina Maintenance, the Marina Office, and Communications departments. The Port's internship and seasonal programs have consistently recruited top students in fields like communications, business, environmental studies, engineering, IT, and more. The Port typically hires two or three interns each summer alongside its seasonal staff. These interns and seasonal staff handle daily duties, gaining real-world experience, with many using this as a stepping stone for local jobs. Some return to the Port for full-time positions, bringing their skills back to the team.

REP. RICK LARSEN NAMED 2024 'PORT PERSON OF THE YEAR'



Congratulations to U.S. Rep. Rick Larsen who was named 2024 *Port Person of the Year* by the American Association of Port Authorities (AAPA). Larsen is a reliable partner to the nation's ports, including the Port of Everett, as we work to modernize to meet the needs of our communities. His advocacy in Congress helps public ports diversify our economy, invest in infrastructure to promote job creation, and make our communities more resilient. Port Commissioner David Simpson and Port Executive Director/CEO Lisa Lefeber joined Direct ChassisLink Inc.'s Senior Vice President, Government and Public Relations and Human Resources, Mike O'Malley, and AAPA's President and CEO, Cary Davis, as they presented the award on March 19, 2024 at the Legislative Summit in Washington, D.C. This award recognizes and celebrates an individual who has made a significant contribution to advance the priorities of public ports.

DID YOU KNOW? Representative Larsen started his career as a Port of Everett seasonal employee in the Marina!

CONGRATULATIONS TO OUR PORT OF EVERETT TEAM MEMBERS!

WANT TO WORK FOR THE PORT OF EVERETT?
EXPLORE JOB OPPORTUNITIES @ [PORTOFEVERETT.COM/JOBS](https://portofeverett.com/jobs)

CAREER MILESTONES

| | |
|--------------------------|-------------------------|
| KEN COLE, 35 YEARS | GARY EISENMAN, 10 YEARS |
| ERIC SWANSON, 35 YEARS | CRAIG HOOKS, 10 YEARS |
| KEVIN WALDROP, 30 YEARS | EMILY MONTS, 10 YEARS |
| MATT FRISINGER, 20 YEARS | ASHLEY BISSET, 5 YEARS |
| BOB MARION, 20 YEARS | JEFF COGGINS, 5 YEARS |
| ERIK GERKING, 15 YEARS | JANIE ENEY, 5 YEARS |
| LAURIE JALLO, 15 YEARS | ELISHA GIDLEY, 5 YEARS |
| JASON BROWN, 10 YEARS | TONY PARRY, 5 YEARS |
| JASON DUBUQUE, 10 YEARS | BRENT SALL, 5 YEARS |

PROMOTIONS

WILL ARMSTRONG
MAINTENANCE APPRENTICE
TATE CAMPBELL
APPRENTICE 2
MAURICIO GARCIA LUNA
MAINTENANCE HELPER
TARAN HOLTZCLAW
MAINTENANCE APPRENTICE
WYATT NIMMER
APPRENTICE 2

NEW HIRES

KARL BIELSER
HARBOR ATTENDANT
GLEN BIRKVOED
SECURITY
ALEX BRANT
MAINTENANCE
JOURNEYMAN
KRIS BRONEMANN
ACCOUNTING TECHNICIAN
RODNEY DAVISSON
CONSTRUCTION MANAGER

CASSIDY FOLLINS
GRANTS COMPLIANCE
ADMINISTRATOR
CONRAD FORDE
MARINA CUSTOMER
SERVICE
JEFFREY FOSS
MAINTENANCE
JOURNEYMAN
EMILY GILBERT
COMMUNICATIONS
SPECIALIST

BARB HACKMANN
HUMAN RESOURCES
MANAGER
SHAYNE
HOEKENDORF
SEASONAL MAINTENANCE
AUSTIN JOYNER
FUEL DOCK ATTENDANT
LOGAN LAMORE
MAINTENANCE
APPRENTICE

MONIQUE LIARD
CHIEF ADMINISTRATIVE &
FINANCIAL OFFICER
ELI LOVERINK
MAINTENANCE HELPER
DAVID SCHMIDT
DOCK SUPERINTENDENT
ALEX SESSO
SEASONAL MAINTENANCE
LUIZA ZABRODINA
SECURITY

SAILING INTO RETIREMENT: CELEBRATING 150+ YEARS OF COMBINED PUBLIC SERVICE

MAKING IT COUNT: LEAD ACCOUNTANT CAROLYN DIEDRICH RETIRES AFTER 44 YEARS



Assistant Controller & Records Officer Carolyn Diedrich retired on May 1, 2024 from the Port of Everett after nearly 44 years of public service — making her one of the longest-tenured full time employees in Port history.

After taking accounting and payroll classes at Everett Community College, Diedrich was hired as the Receptionist/Accounts Receivable Technician in 1980.

It didn't take long for her to move onto the finance team. Diedrich held many accounting and administrative roles over the years, specializing in accounts payable, human resources, payroll, liabilities, assets, records management and more. She finished her career as the Assistant Controller, a position she held since 2019.

As part of the finance team, she was an integral part of the Port of Everett marking 26 consecutive years of clean financial audits with no findings as of 2024.

Diedrich said she will miss her Port family, of which she has been a member for over four decades. She has fond memories of playing cards after hours and competing on the Port's softball and bowling teams. Happy retirement!

END OF AN ERA: MARINA JOURNEYMAN CHRIS KADET HANGS IT UP AFTER 44 YEARS



Longtime Marina Journeyman Chris Kadet retired in June 2024 after being with the Port of Everett Marina for nearly 44 years. Chris started as a seasonal fuel dock attendant in high school after seeing the job posted on a bulletin board at Everett High School.

After graduation, Kadet started working full-time for the Port as a Marina Maintenance Apprentice and worked his way up to Marina Maintenance Journeyman. Kadet was known at the Marina for his hard work, kind spirit, and willingness to help. He credits former Port staff Don Hamilton and Eddie Oldenburg for hiring him and teaching him so much when he started his career at the Port.

Chris loved working with his teammates and is thankful for the Port as he was able to learn more and do more than he could have imagined. He remembers painting the old wood railing along the old North Marina Promenade, present day Central Marina, as one of his first jobs on the Marina Maintenance team. Congratulations on your retirement!

BRIAN FRANKLIN RETIRES AFTER 34 YEARS



Congratulations to Brian Franklin on his retirement from the Port after 34 years of public service.

He retired on March 15, 2024. Franklin started at the Port of Everett in 1990 — he had impressed the Port team with his work on the Seaport's Pier 3 upgrades as a contractor. Franklin worked his way up in the Marine Terminals division from Maintenance Apprentice to Crane Foreman, a position he held since 2020. During his career at the Port, Franklin's value at the 3rd largest container port in Washington state was immeasurable. He was an integral part of purchasing and maintaining all of the cranes that we have at the Port today. He has a great work ethic, is a jack-of-all-trades and thrives in challenges. Congrats, Brian! Happy retirement!

NANCY OVERTON RETIRES AFTER 17 YEARS



We wish Nancy Overton a happy retirement after working for the Port of Everett for 17 years.

Overton was hired at the Port in 2007 as the Grant Administrator & Project Accountant. She retired on March 1, 2024. Her job was to ensure compliance with grant and loan requirements and review construction in progress for various projects. During her time at the Port, she worked with 34 granting agencies to obtain \$163.7 million for capital investments — most recently the \$57 million South Terminal modernization and \$40 million Norton Terminal cleanup and development. Her ability to translate complex agreements into processes, her attention to detail and can-do attitude will be missed. Congratulations, Nancy!

ERIC RUSSELL RETIRES AFTER 16 YEARS



Many congratulations go to Eric Russell on his retirement from the Port of Everett after 16 years, retiring on March

1, 2024. Russell joined the Port in 1996, spending 11 years here, first as the Senior Accountant & Information Services Manager, and later as the Director of Properties and Development. During this time, Russell was influential in setting the framework for the Waterfront Place development, securing the deal that converted the former Biringer Farm into Blue Heron Slough to aid in salmon recovery and preparing the Riverside Business Park for development. After 10 years in finance at Vulcan Inc., he returned to the Port as Chief Financial Officer in 2019. Thank you, Eric! Enjoy retirement!

BUS TOURS ARE BACK!

All aboard! The Port of Everett's community bus tour are back in 2025. Reserve your spot to take a ride around the Port of Everett waterfront to hear about Port operations aboard a guided tour bus. Two tours are being offered this spring, exploring the Port's upland properties, including a ride through shipping facilities for a chance to see cargo operations in action and learn about international trade. The tour will also feature the latest information on the Port's marina facilities and waterfront developments, including the mixed-use Waterfront Place development.



FREE!

COMMUNITY BUS TOURS

**Government-issued photo ID
required for riders 16 years and older*

REGISTRATION NOW OPEN!

MARCH 27
4:30-5:30 P.M.
6-7 P.M.

**GROUP AND SCHOOL
TOURS AVAILABLE BY
REQUEST!**



\$10/PERSON

SPRING HARBOR TOURS

If you're looking for a fun and educational waterfront experience, consider booking a space on our "Aerospace Logistics" Harbor Tour. The Port of Everett is offering guided tours aboard the Hat Island Ferry, focusing on its international seaport and its critical role in supporting aerospace logistics and global trade.

REGISTRATION OPENS MARCH 15

APRIL 23
3:30-5 P.M.
5:30-7 P.M.



\$10/PERSON
(2 & UNDER FREE)

SUMMER HARBOR TOURS

This summer, the Port of Everett is offering nine waterfront harbor tours aboard the 60-passenger Jetty Island Ferry. "Throwback Thursday" tours explore Everett's milltown past, while "Working Waterfront" tours highlight the Port's modern seaport, marina, real estate, and environmental operations.

REGISTRATION OPENS MAY 1

"THROWBACK THURSDAY"
JULY 10, 24 | 6-7 P.M.

AUGUST 7, 21, 28 | 6-7 P.M.

"WORKING WATERFRONT"
JULY 16, 30 | 6-7 P.M.

AUGUST 13, 27 | 6-7 P.M.



LEARN MORE & SIGN UP @
PORTOFEVERETT.COM/PORTTOURS