



NOTICE of MITIGATED DETERMINATION OF NON-SIGNIFICANCE (MDNS)

Port SEPA File No. 2021-01

The Port of Everett has issued a mitigated determination of non-significance (MDNS) under the State Environmental Policy Act Rules (Chapter 197-11) for the following project:

DESCRIPTION OF PROPOSAL: Model Toxics Control Act (MTCA) Interim Action and Maritime Industrial Expansion (at Norton Terminal). The Project includes two interrelated proposed actions at the Port of Everett (Port) – owned site referred to by the Washington State Department of Ecology (Ecology) as the Kimberly-Clark Worldwide (K-C) Site (Facility/Site ID 9). These primary actions are: 1) A Model Toxics Control Act (MTCA) Interim Action (3rd Interim Action) which will be implemented pursuant to an amendment to the existing Agreed Order (Order DE 9476), and 2) the development of the Port’s Maritime Industrial Expansion (MIE) Action. These two actions are complementary and interrelated.

The Port proposes the MIE Action at the K-C MTCA Site, while at the same time conducting a third MTCA interim action cleanup that integrates with the MIE Action plans (collectively “the Project”). The MIE Action includes development of the Site (named the Norton Terminal) into a secure marine cargo terminal on approximately 34 acres of the Site.

As currently envisioned, the 3rd Interim Action will include, but is not limited to:

1. Construction of a low-permeability cap over approximately 32 acres consisting primarily of low-permeability pavement materials to further reduce surface water infiltration and to prevent exposure of terrestrial ecological receptors.
2. Fill importation, grading and compaction associated with areas required to have a low-permeability cap to: 1) increase elevation of the Site to be protective of anticipated sea level rise, 2) provide stormwater drainage, 3) reduce surface water infiltration, and 4) support construction of the low-permeability cap on those areas that have residual soil contamination above cleanup standards.
3. Installation of subgrade and interim above-grade utilities (power, water, stormwater, sanitary sewer, etc.) to support stormwater treatment and conveyance, minimize future disturbance of the cap.
4. Installation of new perimeter security fence.
5. Reconstruct two existing outfalls A and M for discharge from the new stormwater system.
6. Management of contaminated soil and groundwater during construction of subgrade utilities in accordance with an Ecology-approved Soil and Groundwater Management Plan (SGMP), and other soil and groundwater characterization testing as required by Ecology.

The MIE Action at the future Norton Terminal includes:

1. *Site Grading and Paving*—Suitable clean fill material will be imported, placed, and compacted to build up the Site elevations followed by significant portions of the Site being covered with a pavement section designed for the anticipated heavy industrial cargo that will also prevent surface water infiltration as part of the 3rd Interim Action. It is anticipated that some areas may remain as gravel until the entire Project area can be paved and the final MTCA cleanup action is selected by Ecology. Certain areas may be built up to near final grade elevations with thinner pavement sections or other low-permeability system, as needed, to meet the requirements of the 3rd Interim Action or the final cleanup action selected for the MTCA Site by Ecology.

2. *Longshoreman Facility* – Two portable trailers to serve as a longshoreman restroom, shower, lunchroom, and office facility. Total square footage of these trailers is approximately 800 square feet.
3. *Washpad* – An approximately 60-ft-wide by 120-ft-long concrete pad will be constructed for the purpose of washing cargo items and Port equipment.
4. *Cargo Container Containment Area* – An approximately 41-ft-wide by 141-ft-long asphalt pad will be constructed for cargo container containment for use containing any leaks from a container.
5. *Utilities*—Anticipated individual utility systems include the following:
 - A. Stormwater collection and treatment system, including improvements to two existing outfalls. Stormwater system will provide treatment to meet anticipated Industrial Stormwater General Permit (ISGP) requirements. Installation of Outfall A will occur over 120 square feet of shoreline below the high-tide line (HTL). Installation of Outfall M will occur over 420 square feet of the shoreline below the HTL. Stormwater management is an integral part of the Project including areas requiring a low-permeability cap to contain contaminated soil as part of the 3rd Interim Action.
 - i. Water Quality Treatment – The majority of the water quality treatment of stormwater runoff will be provided by an aboveground Chitosan-Enhanced Sand Filtration (CESF) system. CESF systems consist of above grade storage tanks, pumps, and filtration vessels. The aboveground system dimensions are approximately 4,500 square feet with components up to approximately 9 ft tall. A small area to the south will utilize a cartridge stormwater treatment system to absorb and retain pollutants from stormwater runoff. The Site’s runoff will discharge directly to the East Waterway following the required treatment.
 - B. Water – Water distribution and fire protection will include a new looped water system to support both fire protection and domestic water service. An existing 6-inch water main in Federal Avenue will be replaced with a 12-inch main.
 - C. Sanitary Sewer – Sanitary sewer service will be supported by two to three sanitary sewer lift stations at various locations on the Site. Sanitary sewer force main pipes will connect to existing City of Everett manholes to the south at Federal Avenue (or potentially to the north at Norton Avenue).
 - D. Electrical and Communications – Electrical service will be provided by the PUD. New service will be installed at the north end of the Site near the entrance gate off Norton Avenue. Power distribution will be via an underground conduit duct bank system. Temporary power may also be provided to the barge dock if interim use of the barge dock is deemed usable. Communication conduit will be installed from the communications vaults to the various Site security camera locations, gate locations, and other structures. Fiber optic cable will be installed to serve the Site security cameras and other communication needs.
6. *Lighting* – Lighting will be provided by Light-Emitting Diode (LED) light clusters mounted on high-mast poles set on concrete protective foundations. It is anticipated that there would be approximately 13 proposed light poles that will be up to 75 ft tall and comprised of metal poles with concrete bases, one 46-ft tall light pole, and eight 30-ft tall light poles.
7. *Security*— Approximately 4,500 lineal feet of 8-ft-high chain-link fence with a top guard of three strands of barbed wire will be erected along the Site boundaries to maintain terminal security. A guard shack (approximately 240 square feet) will be provided at the entrance at Federal Avenue and will be served by utilities such as water, sewer, power, and communications. Site security will consist of

closed-circuit television (CCTV) cameras mounted on approximately ten 30-foot tall utility poles located throughout the site.

8. *Cargo Gateway* – Cargo movements between the existing terminal to the south and the proposed Norton Terminal to the north will occur on or adjacent to Federal Avenue. Several options for the cargo gateway are under consideration including the following: a) a secure gateway that utilizes Federal Avenue through an agreement with the City of Everett that allows the Port control of the Federal Avenue right-of-way; b) a non-secure gateway that utilizes Federal Avenue and may involve an agreement with the City of Everett, or; c) a secure gateway on Port property, adjacent to the west side of Federal Avenue.
9. *Landscaping* - Landscaping specifics remain under consideration, which include integration of City of Everett requirements with Project operations requirement and the Interim and Final MTCA CAP.
10. *Optional or Future Terminal Operations Support Elements* – Installation of truck scales and other elements that support the operations of a shipping terminal.

Work is expected to begin in May 2021 and in-water work will adhere to the work window that allows in-water construction work (typically July 15th – February 15th). The project is expected to be completed in 2023.

PROPONENT AND LEAD AGENCY: Port of Everett

LOCATION OF PROPOSAL: The property is located at 2600 Federal Avenue, Everett, Washington, 98201, in Snohomish County. The Project is located in Section 19, in Township 29 North, Range 5 East, Willamette Meridian. The Snohomish County Tax Parcel Numbers include 29051900201500, 29051900200900, 29051900201000, 29051900300100, 29051900300200, 29051900300201, 29051900201100, 00597761803000, 00597761801000, 00597761800600, 00437461700200, 00597761800102, and 00597761803901.

After review of a completed checklist and other information on file with the agency, the Port of Everett has determined that this proposal will not have a probable adverse impact on the environment.

Copies of the MDNS and other file information are available at the Port of Everett Administrative Office located at 1205 Craftsman Way, Suite 200, Everett, WA 98201, or contact Laura Gurley by phone at (425) 388-0720 or via email at LauraG@portofeverett.com.

The public is invited to comment on the MDNS by submitting written comments no later than March 26, 2021 to John Klekotka, P.E., Chief of Engineering & Planning/SEPA Responsible Official, at P.O. Box 538, Everett, WA 98206, or via email at SEPAComments@portofeverett.com, subject line: “MTCA Interim Action and Maritime Industrial Expansion”

Phone number (425) 259-3164.



Signed with OnTask.io — 0242AC120002

John Klekotka, P.E., Chief of Engineering & Planning
SEPA Responsible Official
Published: March 11, 2021

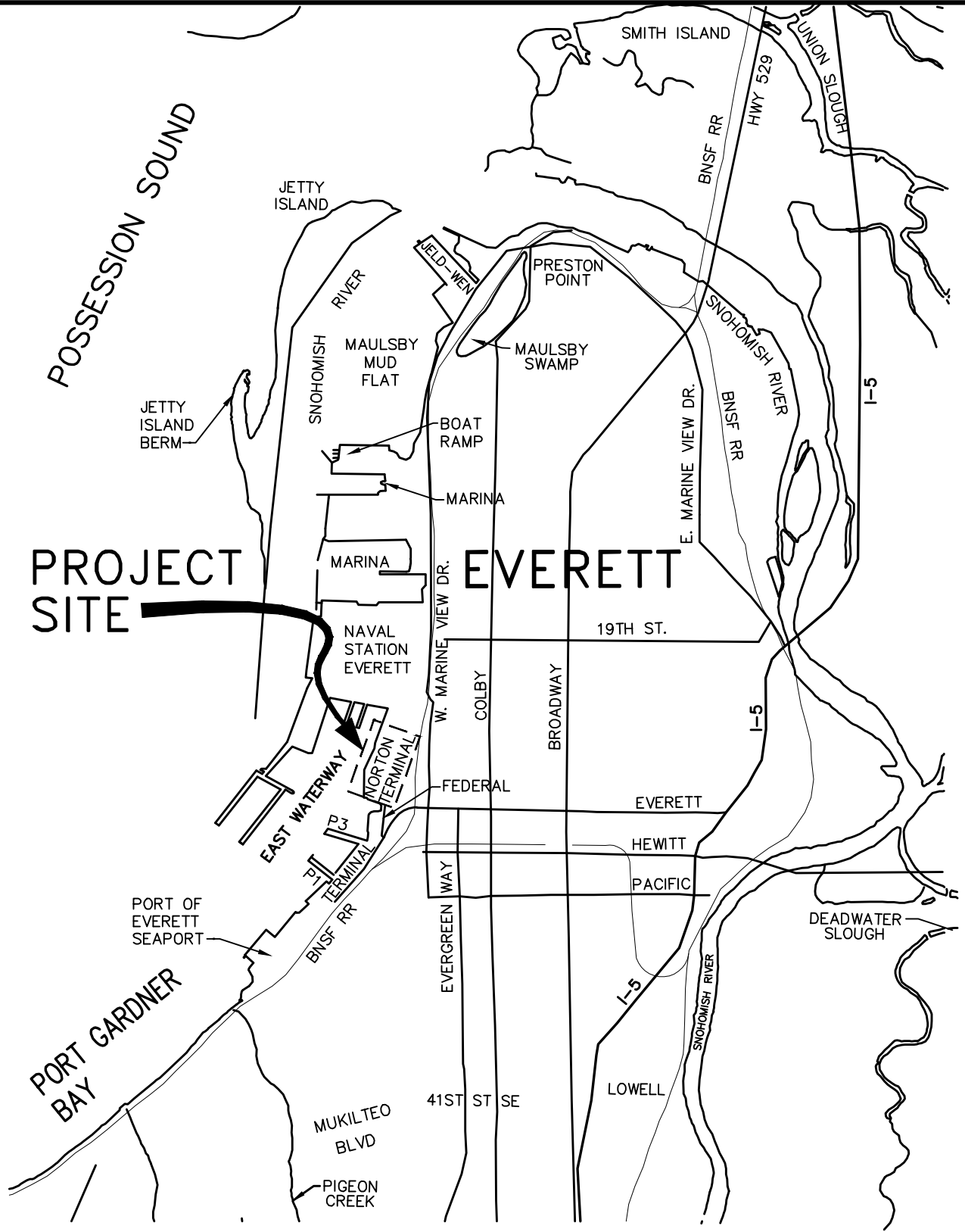
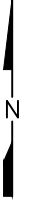


FIGURE 1
VICINITY MAP
 SCALE: NTS



ONTASK

SIGNATURE CERTIFICATE

Workflow Reference: 0c6d739a-805f-11eb-b525-0242ac120002

SIGNED BY

AUDIT TRAIL

Johnk@portofeverett.com
IP Address: 24.16.92.137,
10.200.2.123

08-Mar-2021 6:35 PM EST Document accepted & signed
Reference ID: 4ceab2d9-805f-11eb-aaba-0242ac120002
