

MILLWRIGHT LOOP CONSTRUCTION SEQUENCING

PHASE 2 | TIMELINE: JULY 2023 – APRIL 2024



PHASE 2 SCOPE

- ✓ Regrading preload piles
- ✓ Installing all new utilities
- ✓ Building Millwright Loop North and South, as well as Chamfer Street

PROJECT KEY

TEMPORARY ROAD

SHUTTLE LOT
(THROUGH SEPTEMBER)

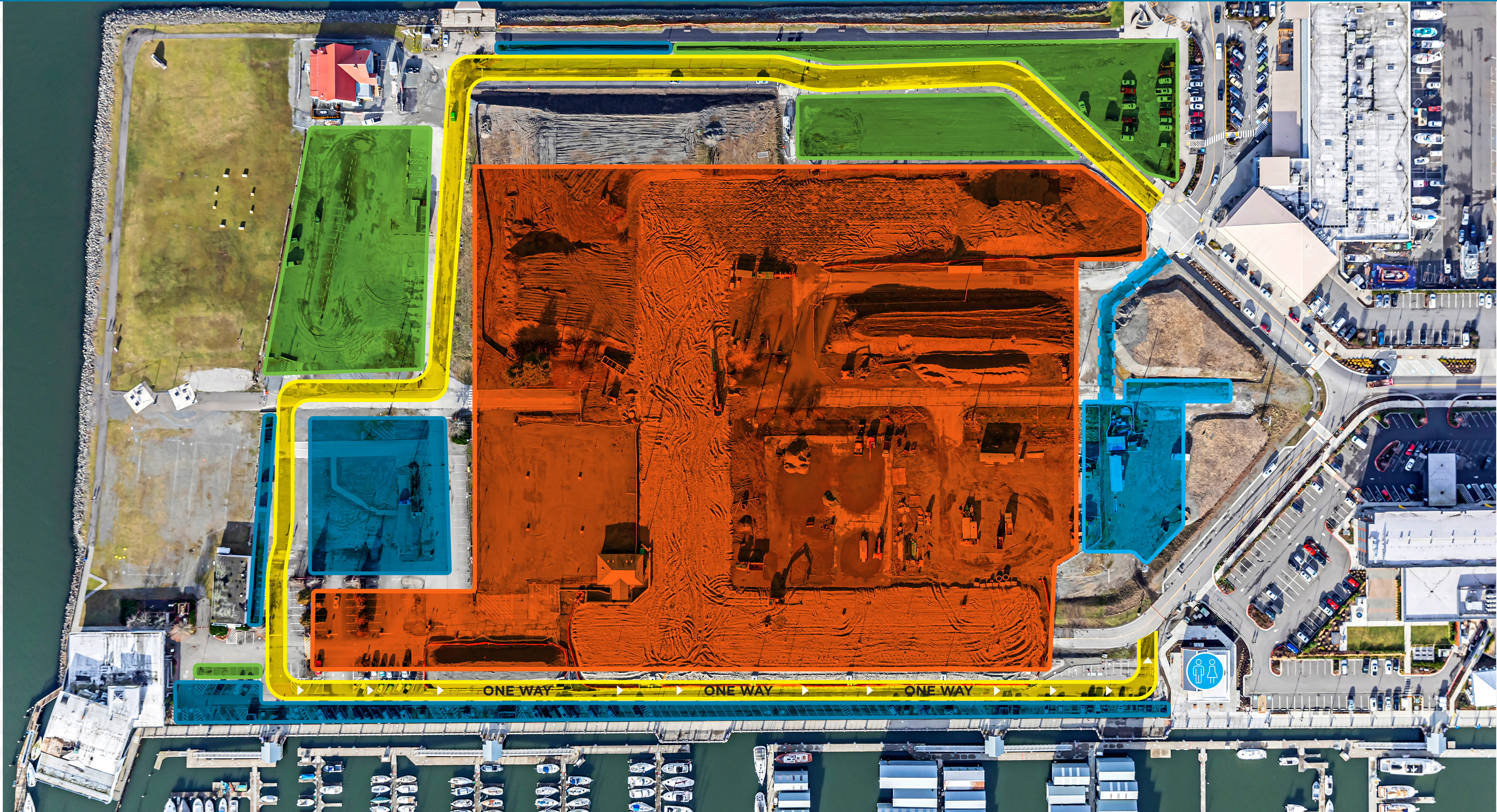
SLIPHOLDER PARKING

VISITOR PARKING

CONSTRUCTION ZONE



MARINA SLIPHOLDER
SHUTTLE LOT & DROPOFF
LOCATIONS



Port to continue shuttle service for boaters due to increased parking impacts; more information to follow



Closure of the Central Marina restroom; laundry/facilities available at South Marina



Restroom and showers open at new Central Marina restroom near Hotel Indigo

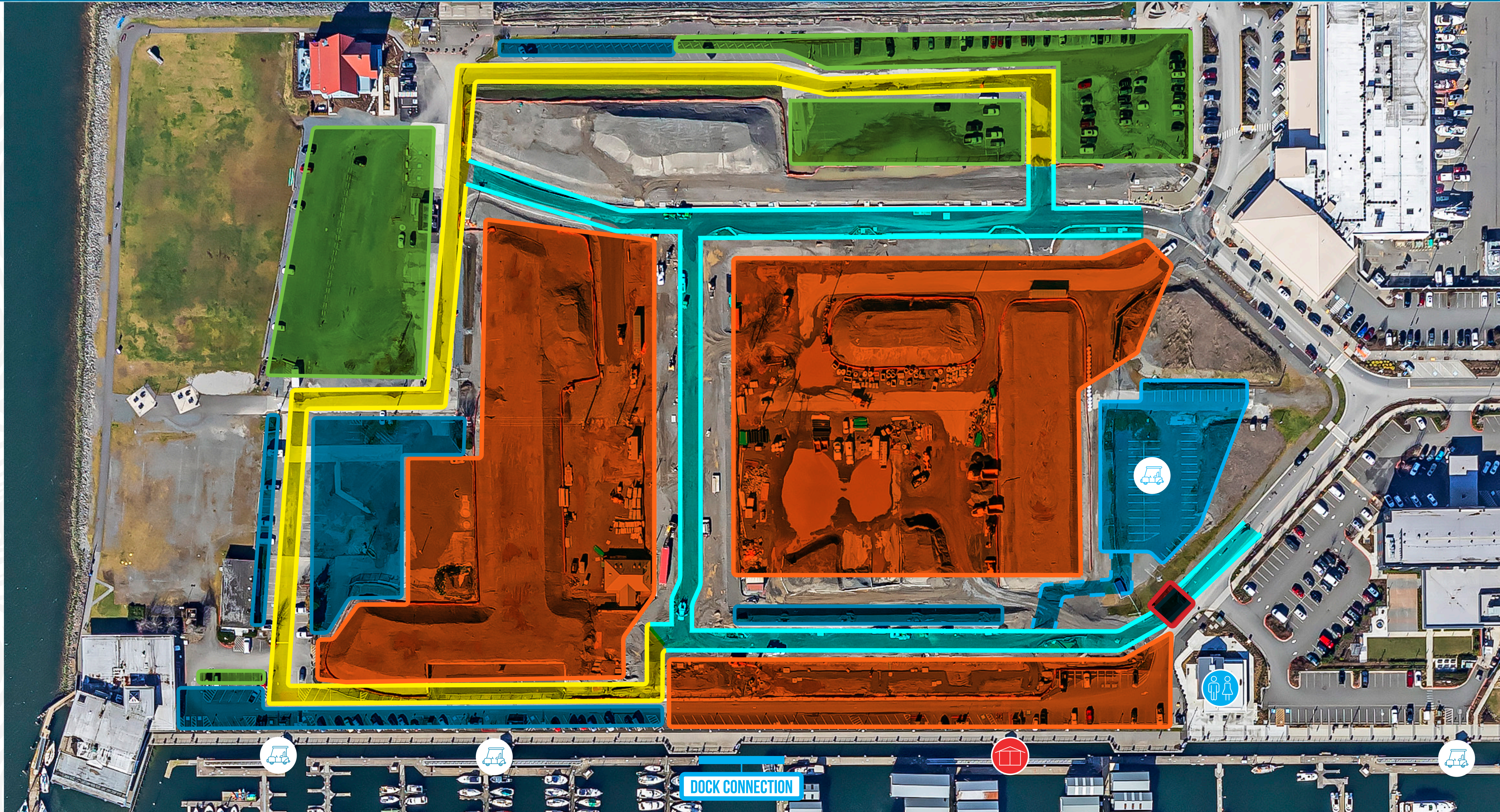


Temporary utility impacts to be expected; slipholders to receive AlertSense notifications

QUESTIONS?

Contact publicaffairs@portofeverett.com or visit portofeverett.com/MillwrightConstruction for more information.

PHASE 3 | TIMELINE: APRIL 2024 – JUNE 2024



Contact publicaffairs@portofeverett.com
or visit portofeverett.com/MillwrightConstruction
for more information.

MILLWRIGHT LOOP CONSTRUCTION SEQUENCING

PHASE 4 | TIMELINE: JUNE 2024 – SEPTEMBER 2024



PHASE 4 SCOPE

- ✓ Construct final segment of Millwright Loop (roadways, utilities)
- ✓ Construct new Marina Slipholder parking lot adjacent to western gatehouse
- ✓ Construct western esplanade expansion and vista

PROJECT KEY

TEMPORARY ROAD

COMPLETED ROAD

SHUTTLE LOT (IF NEEDED)

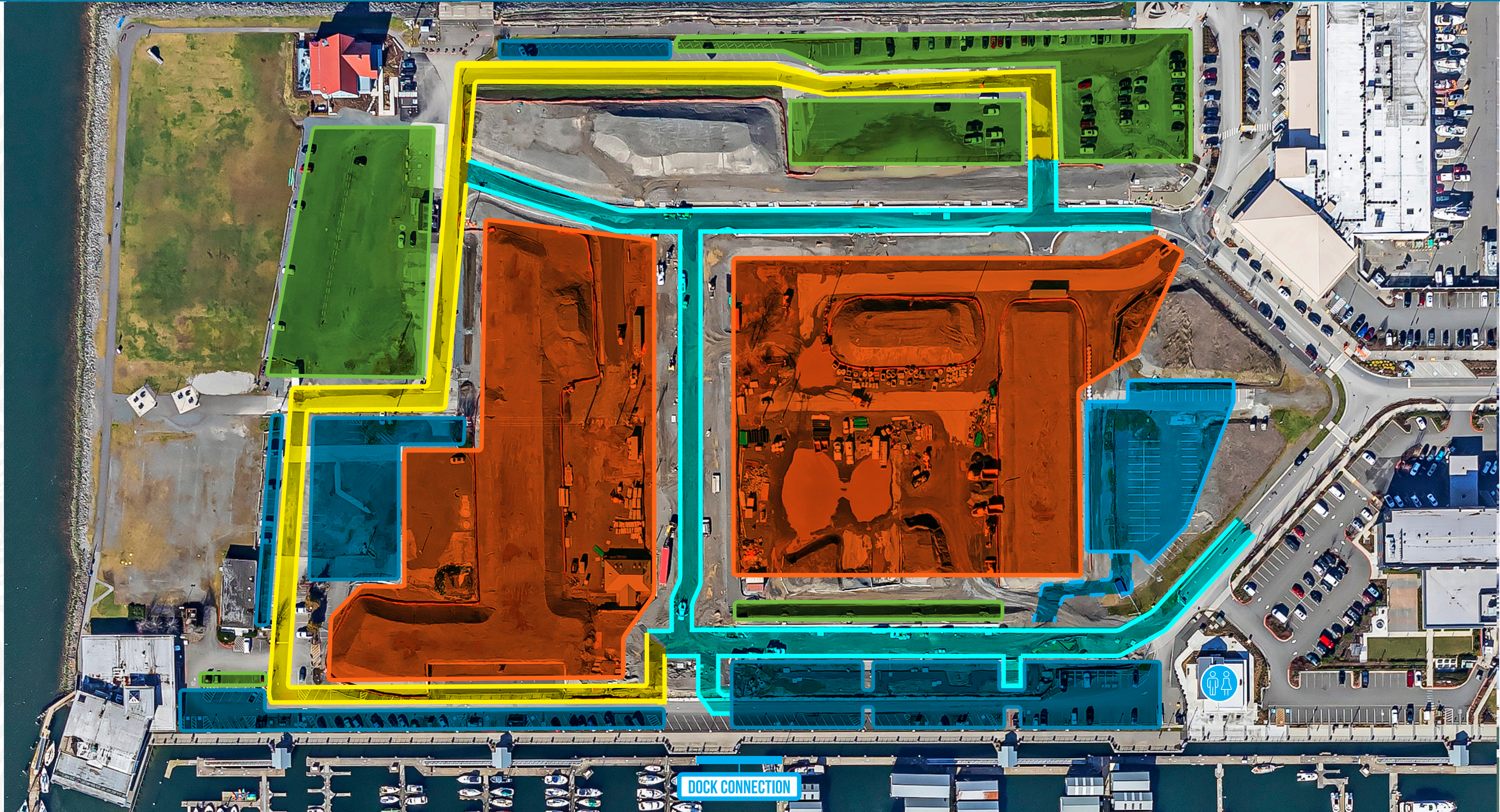
SLIPHOLDER PARKING

VISITOR PARKING

CONSTRUCTION ZONE



MARINA SLIPHOLDER
SHUTTLE LOT & DROPOFF
LOCATIONS



New eastern gated
Marina Slipholder
Parking Lot open



Two-way travel restored



Temporary utility impacts to be
expected; slipholders to receive
AlertSense notifications

QUESTIONS?

Contact publicaffairs@portofeverett.com
or visit portofeverett.com/MillwrightConstruction
for more information.

MILLWRIGHT LOOP CONSTRUCTION SEQUENCING

PHASE 5 | TIMELINE: SEPTEMBER 2024 - NOVEMBER 2024



PHASE 5 SCOPE

- ✓ Construct final segment of Millwright Loop South (roadways, utilities)
- ✓ Build western Marina Slipholder parking lot
- ✓ Construct western esplanade expansion and vista

PROJECT KEY

TEMPORARY ROAD

COMPLETED ROAD

SHUTTLE LOT (IF NEEDED)

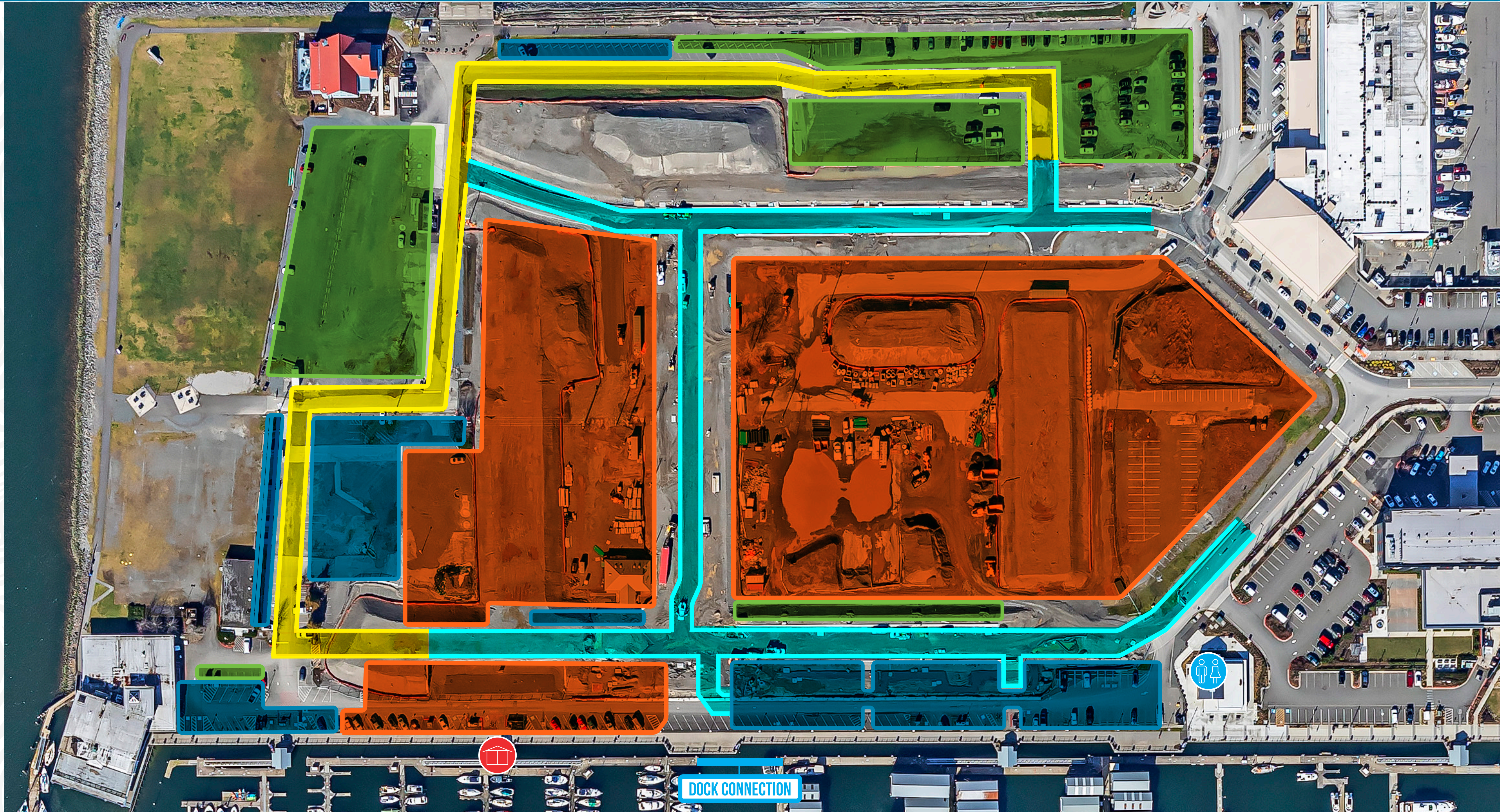
SLIPHOLDER PARKING

VISITOR PARKING

CONSTRUCTION ZONE



SHUTTLE PARKING &
DROPOFF LOCATIONS



New eastern Marina
Slipholder Parking Lot open



Anticipate temporary 10-day
closure of Central B - F Docks
Gatehouse; advanced notice and
alternate access provided



Two-way travel restored

QUESTIONS?

Contact publicaffairs@portofeverett.com
or visit portofeverett.com/MillwrightConstruction
for more information.

MILLWRIGHT LOOP CONSTRUCTION SEQUENCING

FINAL SITE | TIMELINE: END OF 2024



FINAL PROJECT OUTCOME

- ✓ Two brand new gated marina tenant parking lots
- ✓ Complete roadway system and necessary utility connections for Millwright District private development
- ✓ Completed Esplanade expansion and two new vistas down to B/C Docks
- ✓ Marina visitor parking restored
- ✓ New garbage enclosures

PROJECT KEY

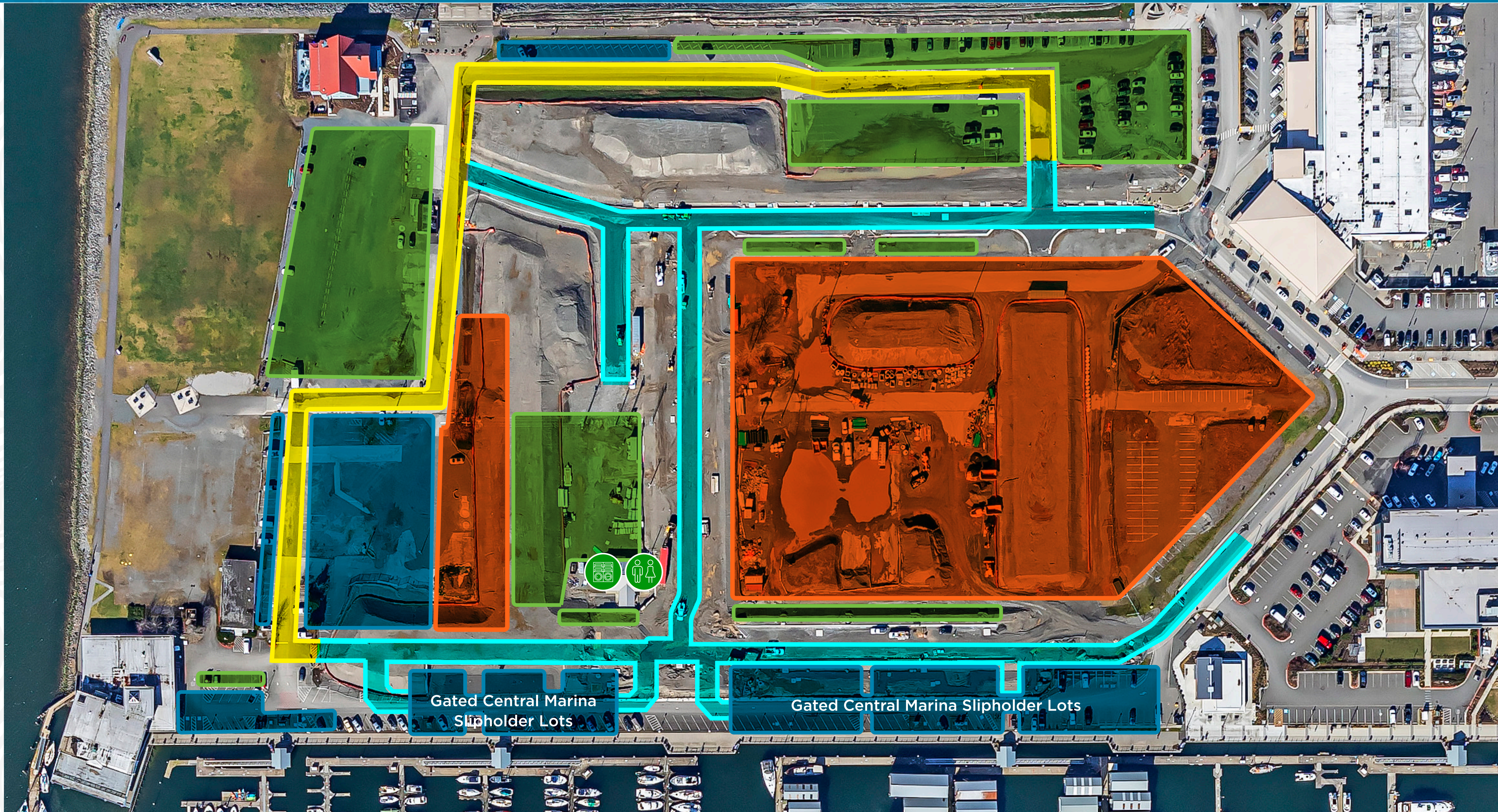
MILLWRIGHT LOOP ROAD

COMPLETED ROAD

SLIPHOLDER PARKING

VISITOR PARKING

DEVELOPER LOT
(POTENTIALLY UNDER
CONSTRUCTION)



Central Marina laundry
reopens



Central Marina restrooms and
showers reopen



Two brand new gated
marina tenant parking lots

QUESTIONS?

Contact publicaffairs@portofeverett.com
or visit portofeverett.com/MillwrightConstruction
for more information.