

MILLWRIGHT LOOP CONSTRUCTION SEQUENCING

PHASE 1 | ANTICIPATED TIMELINE: MARCH – JULY 2023



PHASE 1 SCOPE

- ✓ First phase of preload placed and settling
- ✓ Marina Fuel Tank preload placed and settling
- ✓ Construction Zone Traffic Route Modifications
- ✓ Construction of Temporary Access Roads
- ✓ Temporary realignment of Marina & Visitor Parking

PROJECT KEY

TEMPORARY ROAD

SHUTTLE LOT

SLIPHOLDER PARKING

VISITOR PARKING

CONSTRUCTION ZONE



MARINA SLIPHOLDER
SHUTTLE LOT & DROPOFF
LOCATIONS



Port to implement shuttle service for boaters due to increased parking impacts during peak season; more information to follow



Temporary utility impacts to be expected; slipholders to receive AlertSense notifications

QUESTIONS?

Contact publicaffairs@portofeverett.com
or visit portofeverett.com/MillwrightConstruction
for more information.

MILLWRIGHT LOOP CONSTRUCTION SEQUENCING

PHASE 2 | TIMELINE: JULY 2023 – FEBRUARY 2024



PHASE 2 SCOPE

- ✓ Regrading preload piles
- ✓ Installing all new utilities
- ✓ Building Millwright Loop North and South, as well as Chamfer Street

PROJECT KEY

TEMPORARY ROAD

SHUTTLE LOT
(THROUGH SEPTEMBER)

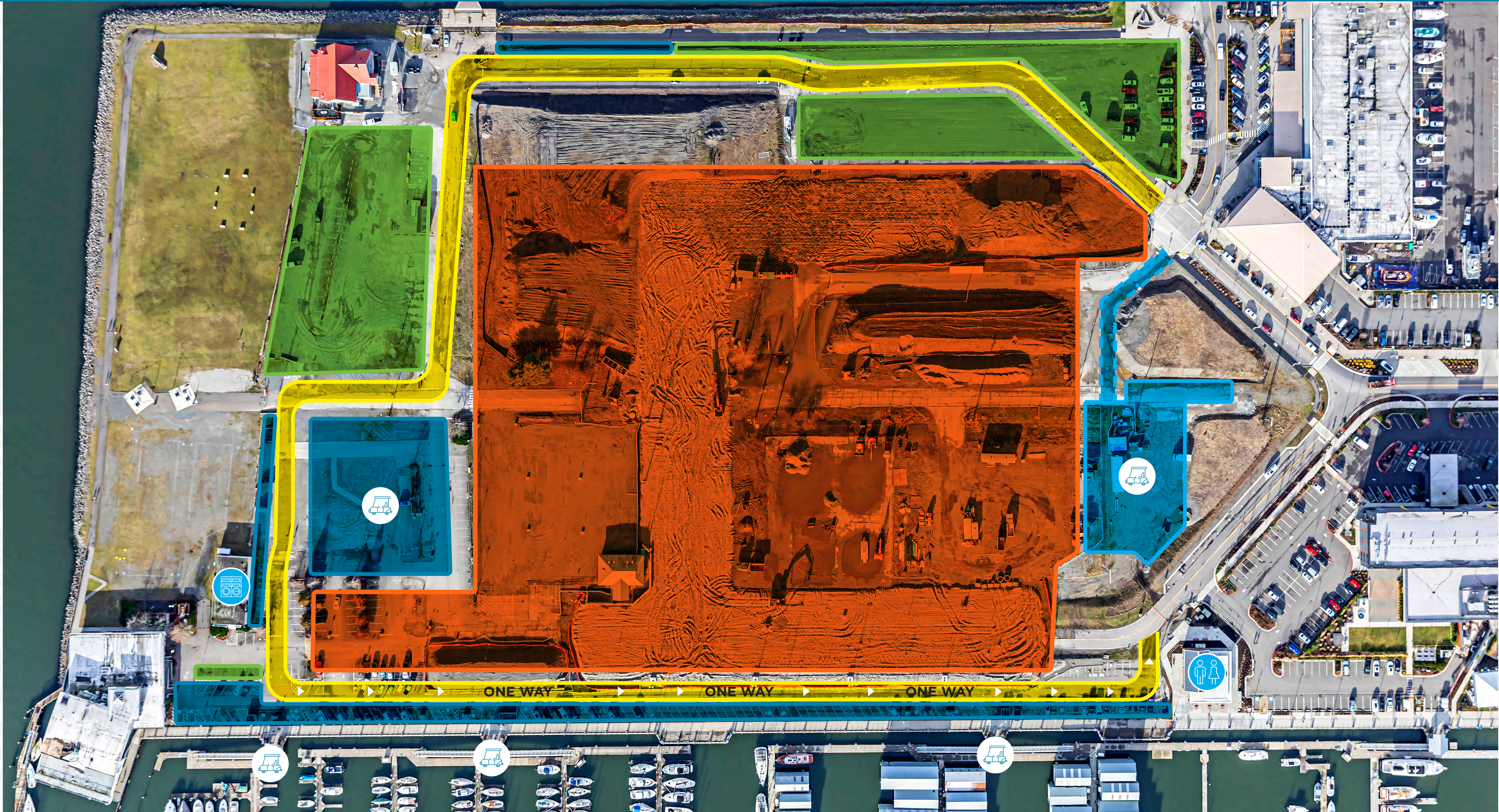
SLIPHOLDER PARKING

VISITOR PARKING

CONSTRUCTION ZONE



MARINA SLIPHOLDER
SHUTTLE LOT & DROPOFF
LOCATIONS



Port to continue shuttle service for boaters due to increased parking impacts; more information to follow



Closure of the Central Marina restroom; repurpose former Milltown Sailing building with restrooms and free laundry for slipholders



Restroom and showers open at new Central Marina restroom near Hotel Indigo

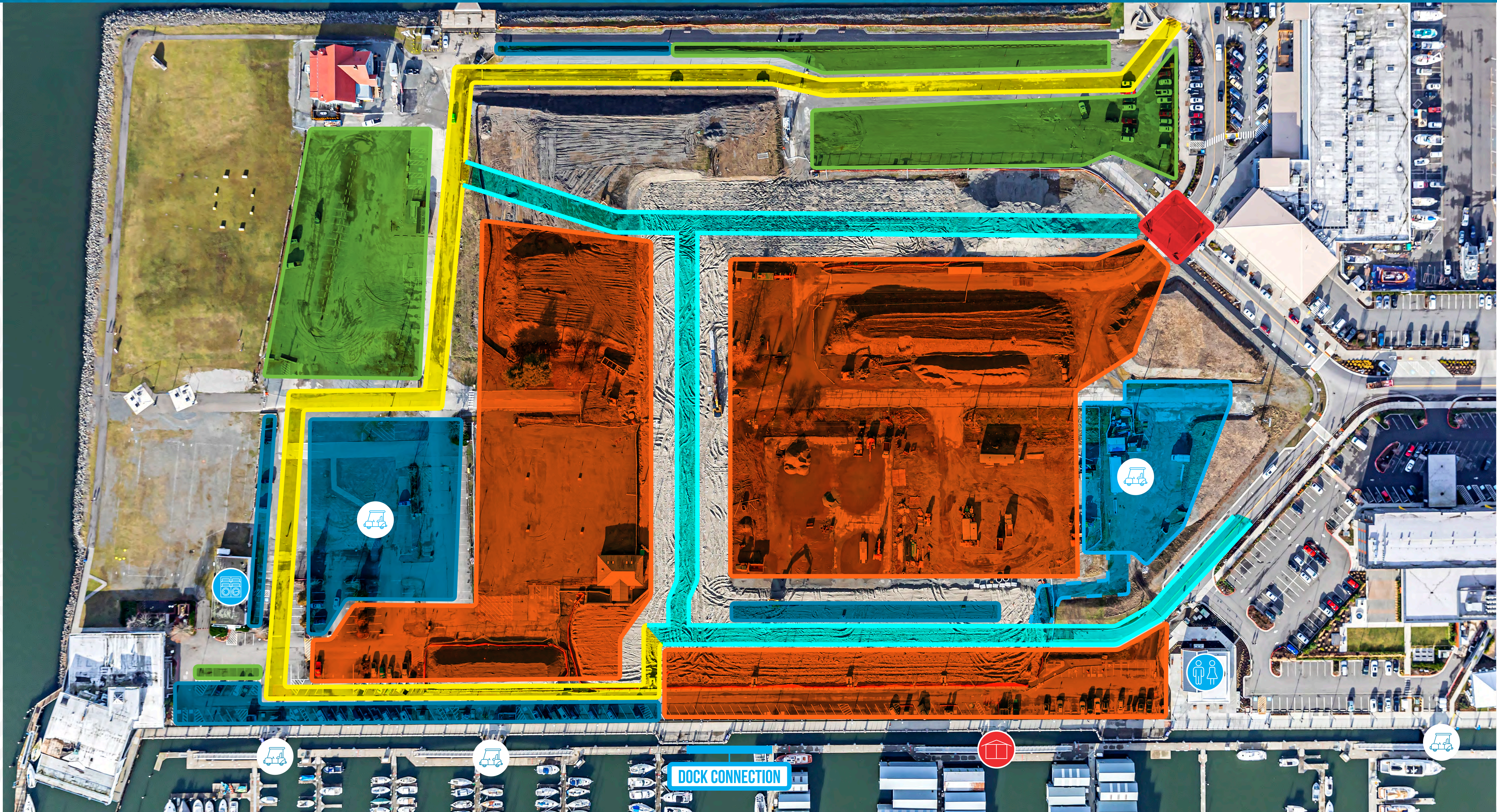


Temporary utility impacts to be expected; slipholders to receive AlertSense notifications

QUESTIONS?

Contact publicaffairs@portofeverett.com or visit portofeverett.com/MillwrightConstruction for more information.

PHASE 3 | TIMELINE: FEBRUARY 2024 – MAY 2024



Contact publicaffairs@portofeverett.com
or visit portofeverett.com/MillwrightConstruction
for more information.

MILLWRIGHT LOOP CONSTRUCTION SEQUENCING

PHASE 4 | TIMELINE: MAY 2024 – JULY 2024



PHASE 4 SCOPE

- ✓ Construct final segment of Millwright Loop (roadways, utilities)
- ✓ Construct new Marina Slipholder parking lot adjacent to western gatehouse
- ✓ Construct western esplanade expansion and vista

PROJECT KEY

TEMPORARY ROAD

COMPLETED ROAD

SHUTTLE LOT (IF NEEDED)

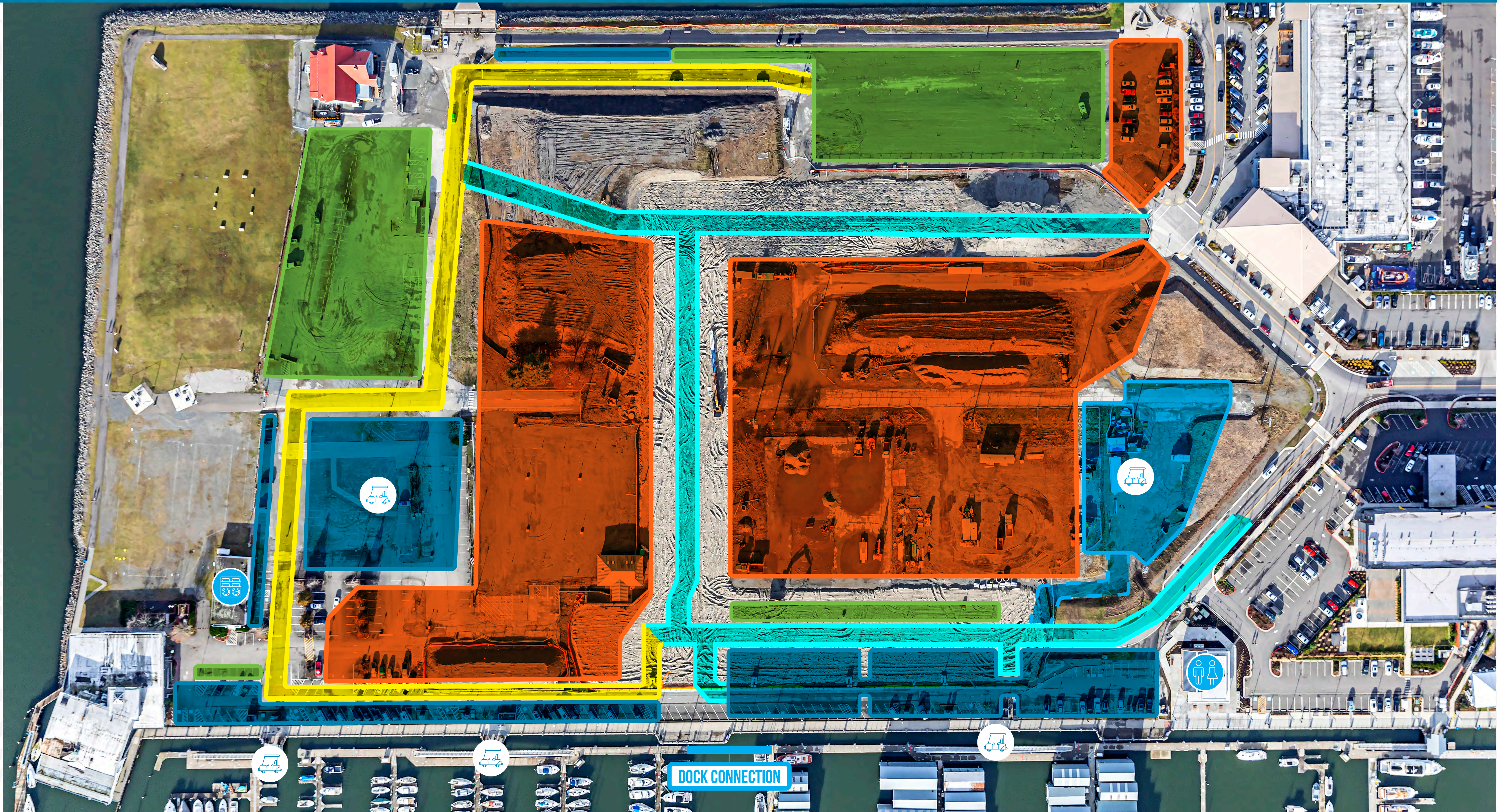
SLIPHOLDER PARKING

VISITOR PARKING

CONSTRUCTION ZONE



MARINA SLIPHOLDER
SHUTTLE LOT & DROPOFF
LOCATIONS



Port to continue shuttle service for boaters due to increased parking impacts; service will continue until it is no longer in demand; more information to follow



New eastern gated Marina Slipholder Parking Lot open



Two-way travel restored



Temporary utility impacts to be expected; slipholders to receive AlertSense notifications

QUESTIONS?

Contact publicaffairs@portofeverett.com
or visit portofeverett.com/MillwrightConstruction
for more information.

MILLWRIGHT LOOP CONSTRUCTION SEQUENCING

PHASE 5 | TIMELINE: JULY 2024 - NOVEMBER 2024



PHASE 5 SCOPE

- ✓ Construct final segment of Millwright Loop South (roadways, utilities)
- ✓ Build western Marina Slipholder parking lot
- ✓ Construct western esplanade expansion and vista

PROJECT KEY

TEMPORARY ROAD

COMPLETED ROAD

SHUTTLE LOT (IF NEEDED)

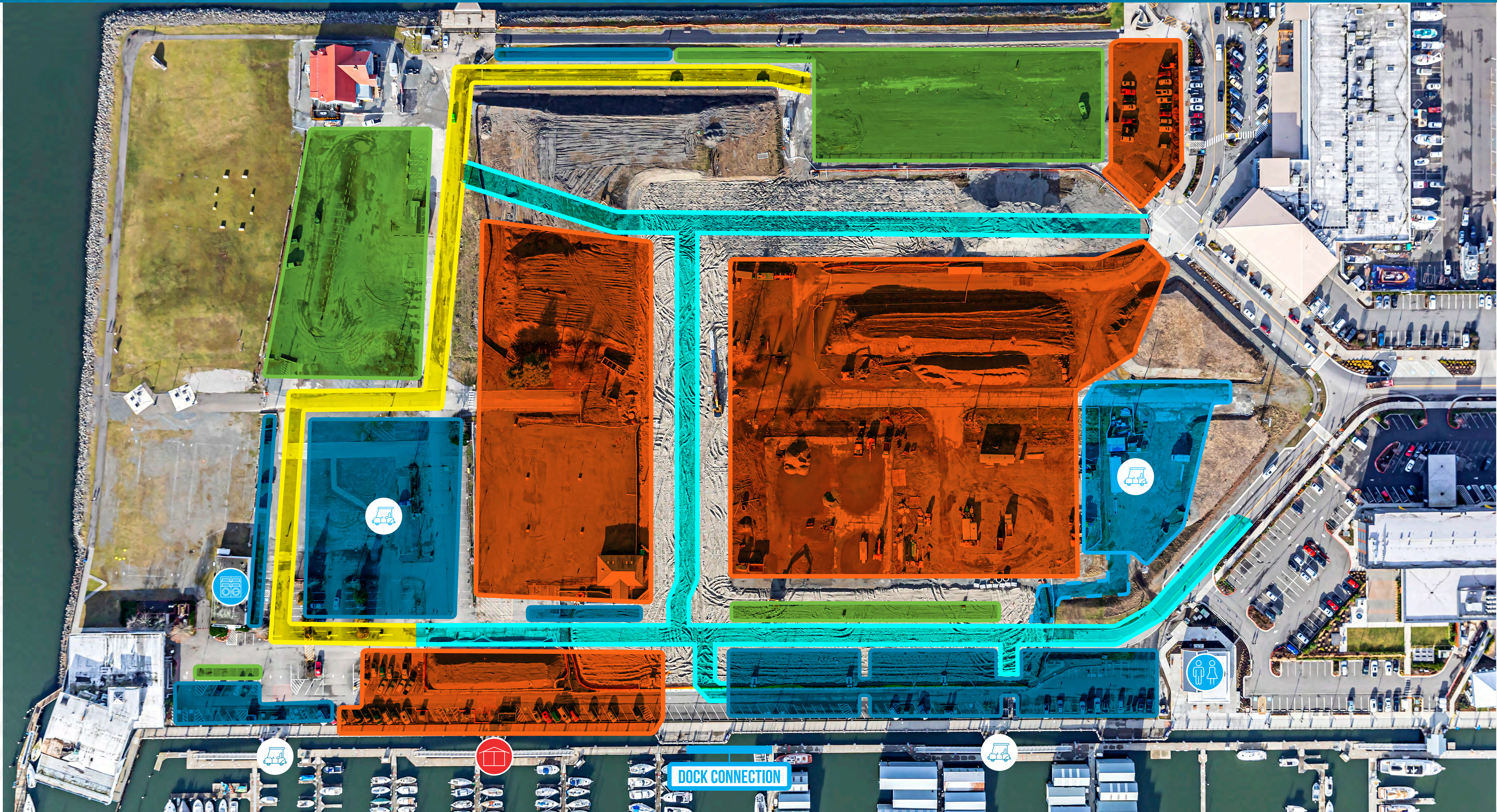
SLIPHOLDER PARKING

VISITOR PARKING

CONSTRUCTION ZONE



SHUTTLE PARKING &
DROPOFF LOCATIONS



Port to continue shuttle service for boaters due to increased parking impacts. Service will continue until it is no longer in demand; more information to follow



New eastern Marina
Slipholder Parking Lot open



Anticipate temporary 10-day
closure of Central B - F Docks
Gatehouse; advanced notice and
alternate access provided



Two-way travel restored

QUESTIONS?

Contact publicaffairs@portofeverett.com
or visit portofeverett.com/MillwrightConstruction
for more information.

MILLWRIGHT LOOP CONSTRUCTION SEQUENCING

FINAL SITE | TIMELINE: END OF 2024



FINAL PROJECT OUTCOME

- ✓ Two brand new gated marina tenant parking lots
- ✓ Complete roadway system and necessary utility connections for Millwright District private development
- ✓ Completed Esplanade expansion and two new vistas down to B/C Docks
- ✓ Marina visitor parking restored
- ✓ New garbage enclosures

PROJECT KEY

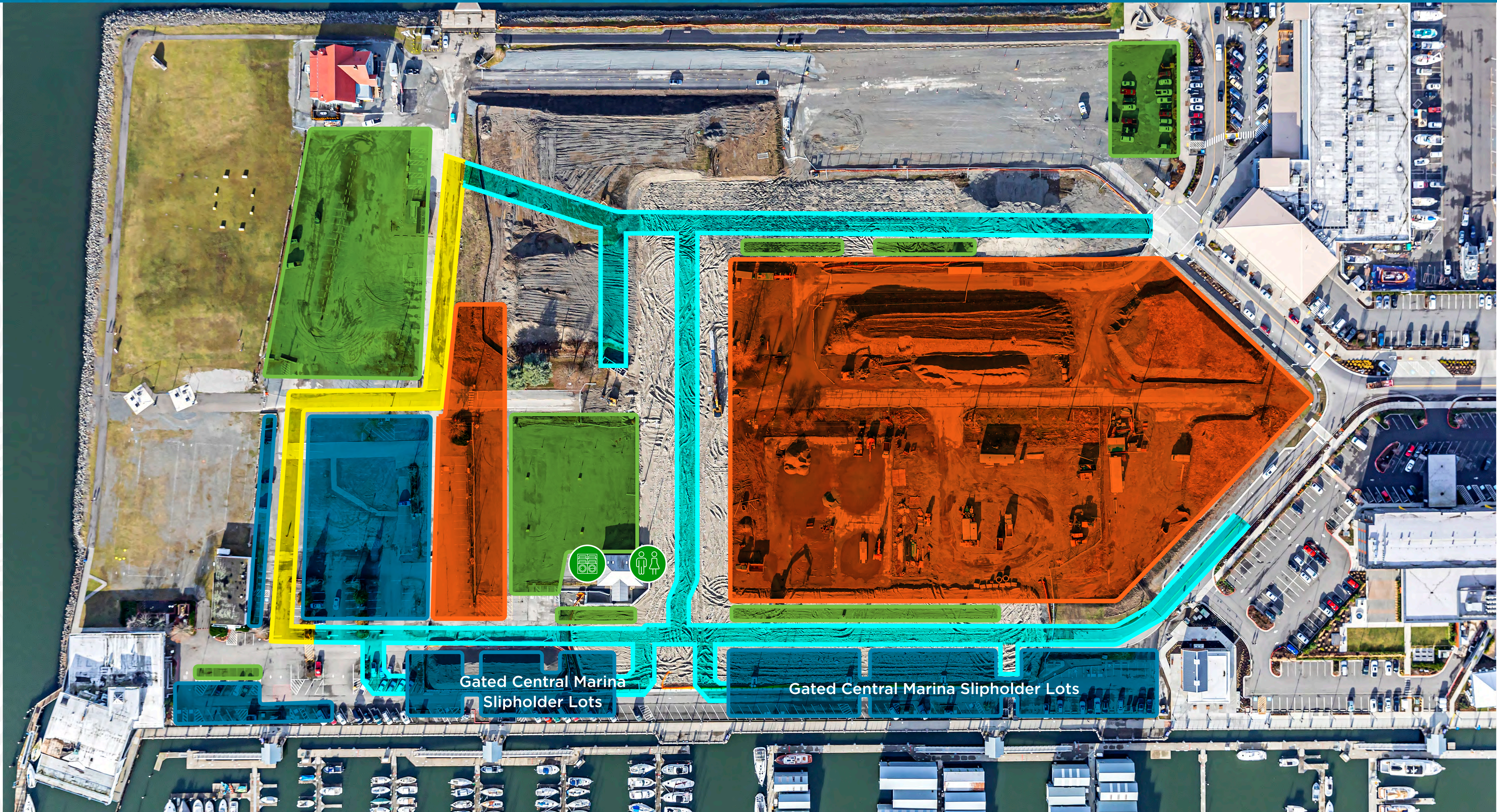
MILLWRIGHT LOOP ROAD

COMPLETED ROAD

SLIPHOLDER PARKING

VISITOR PARKING

DEVELOPER LOT
(POTENTIALLY UNDER
CONSTRUCTION)



Central Marina laundry
reopens



Central Marina restrooms and
showers reopen



Two brand new gated
marina tenant parking lots

QUESTIONS?

Contact publicaffairs@portofeverett.com
or visit portofeverett.com/MillwrightConstruction
for more information.