



WATERFRONT PLACE

@ PORT OF EVERETT

Waterfront Place Construction Update

April 21, 2023



Millwright District Preloaded for Road Construction

Next Phase of Work to Kick Off this Summer

Have you seen the large mounds of dirt in the uplands at Waterfront Place and wondered what is all that dirt for? We break it down for you below and provide a peek at what's to come next for construction.

The Port of Everett's Millwright District has been preloaded for future roadway construction. Port contractor Strider Construction finished importing about 33,000 cubic yards — or approximately 2,000 dump truck loads — of clean structural fill known as "preload" in February 2023.

The preload is placed where future Millwright Loop Roads will be built on the 10-acre plot. The fill compacts the site to prevent settlement after construction, and it also provides the additional material needed to mitigate for rising sea level.

Strider Construction's work to this point has also included hardscape demolition, widening a trail, building temporary roads, and realignment of traffic flow and parking lots to support construction.

As preload settles the Port will be seeking bids for the next phase of work, including construction of new roadways, preload reuse along future roadway alignments, the new Central Marina parking lots and Central Marina esplanade expansion, including build-out of two vistas along the walkway. Work will also include utility and stormwater improvements. Stay up to date on the Millwright Loop Roadway project at www.portofeverett.com/MillwrightConstruction.

[CLICK HERE FOR PROJECT PHASING MAPS](#)

MILLWRIGHT LOOP ROADS CONSTRUCTION BY THE NUMBERS



33,000

CUBIC YARDS

OFF PRELOAD MATERIAL HAS BEEN BROUGHT ON SITE



2,000

DUMP TRUCK LOADS

MADE BY 16 TRUCKS IN MULTIPLE RUNS EACH DAY TO BRING IN THE CLEAN FILL DIRT



5-8

MONTHS

FOR PRELOAD TO SETTLE; MATERIAL WILL THEN BE MOVED TO COMPACT OTHER PORTIONS OF THE SITE AND TO BUILD SITE UP TO FINAL ELEVATION



6,000

WICK DRAINS

INSTALLED TO EXPEDITE SETTLEMENT MARKED BY COLORFUL STAKES

[Click here to watch a quick video showing work to date](#)



FIVE NEW RESTAURANTS OPENING AT WATERFRONT PLACE THIS SPRING

Five new restaurants are getting closer to their opening dates at the Port of Everett's Waterfront Place with announcements expected late-May through June, including [The Muse Whiskey & Coffee](#), which is transforming the historic Weyerhaeuser building into a 1920s speakeasy-style gathering space offering coffee by day and a bar experience by evening. The new Asian-inspired [Fisherman Jack's](#) and [South Fork Baking Co.](#) will be opening at Fisherman's Harbor's "restaurant row," and [Woods Coffee](#) (featuring the added convenience of a drive-thru) and [Sound 2 Summit Brewing Co.](#) are opening at Port Gardner Landing south of Lombardi's. All building contractors have turned keys over for tenant improvements. Watch for open dates at the Port's website and on social media.



The Muse, set to open in early June, will bring patrons back to the 1920s, offering a coffee house by day and a speakeasy-style whiskey bar by night. The new concept reopens the iconic piece of history for public enjoyment, offering museum elements to explore the building's storied past, and also provide a new home for some of Everett's boating clubs.



Fisherman Jack's and South Fork Baking Co. are also set to open this June as the first building to open in the Port's "restaurant row" to line the esplanade at Fisherman's Harbor. Enjoy Chinese dishes infused with Pacific Northwest seafood at Fisherman Jack's and get your sweet tooth fix at South Fork Baking Co. who will offer a selection of baked goods, espresso and sandwiches.



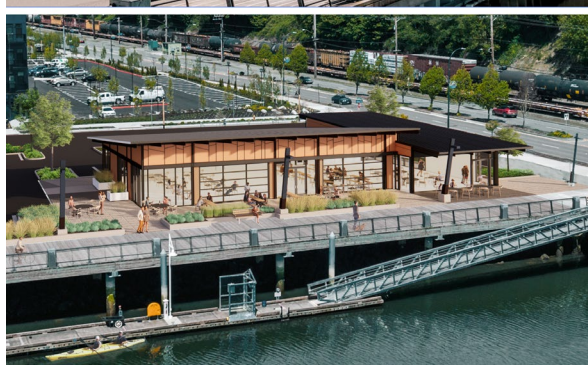
Beans and brews! Two PNW based businesses — Woods Coffee and Sound 2 Summit Brewing Co. are expanding their presence to Waterfront Place in two new buildings situated at the corner of 17th and West Marine View Drive. Beginning in late-May, you can sit back to enjoy a brew and pizza at the brewery and in June, you can swing in for a coffee and a snack at Woods.

PORT AWARDS DESIGN CONTRACT FOR NEW RESTAURANT/RETAIL BUILDINGS AT WATERFRONT PLACE

In February 2023, the Port of Everett Commission awarded a \$1.5 million contract to Seattle-based BCRA to complete design of two new buildings bringing more retail and restaurants to the Port's 65-acre Waterfront Place development.

One building will be constructed next door to the soon-to-open Fisherman Jack's and South Fork Baking Co. This building will house [Anisoptera Spa](#), [Rustic Cork Wine Bar](#) and [Menchie's @ the Marina](#). The Port is actively recruiting a complementary restaurant such as a breakfast spot or pizza place.

The other building, at the corner of Seiner and West Marine View drives will feature [Lazy Boy Brewing Co.](#) The Port is also targeting a year-round fish market here.



Port development partner The Shuster Group will be breaking ground on the new buildings in "restaurant row" early next year. Businesses are expected to open in the 2024/2025 timeframe.

SAVE THE DATE! Waterfront Place Open House Set For June 29



You're Invited!

WATERFRONT PLACE COMMUNITY OPEN HOUSE

JUNE 29, 2023 | 4 - 7 P.M.

PACIFIC RIM PLAZA AT WATERFRONT PLACE
1028 13TH STREET, EVERETT, WA 98201
(Pacific Rim Plaza is located on the south side of Hotel Indigo)

Join us at the annual Waterfront Place Community Open House to explore the latest happenings with the Port of Everett's mixed-use development. Chat with project developers, explore recent construction milestones and hear about what's coming next.

Interested in retail/restaurant opportunities at Waterfront Place?

[Contact Us!](#)