



Fuel Dock Reconstruction
Contract Modification Request
May 9, 2023

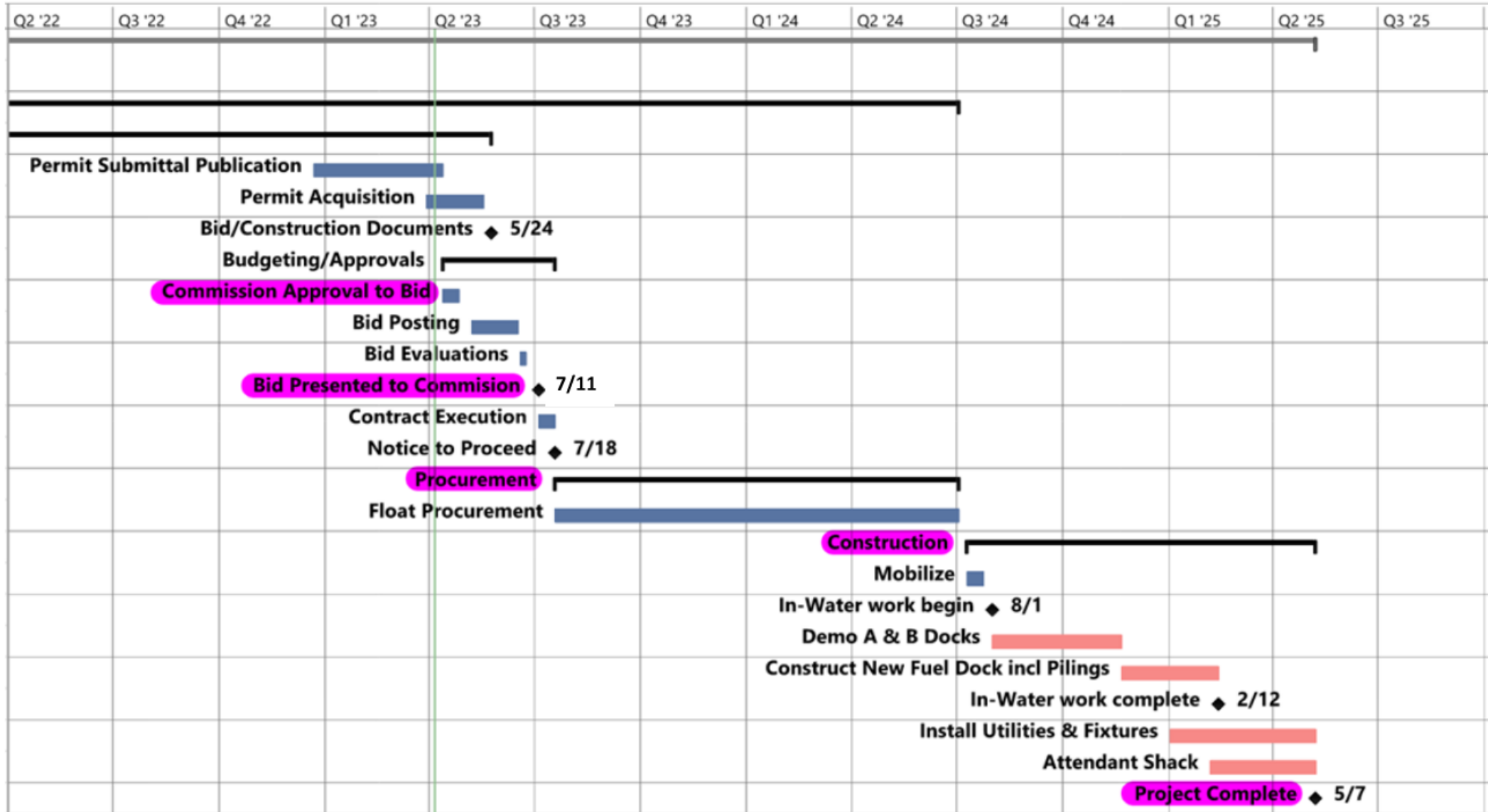
Joe Eagle
PROJECT MANAGER
PORT OF EVERETT



PROJECT ELEMENTS

- ✓ Demolition of Existing Floats “A” and “B”
- ✓ New 500-ft post-tensioned concrete Dock assembly
- ✓ 6 Dispensers, 12 Nozzles; including ultra-high flow Diesel dispensers
- ✓ Fuel Attendant Building
- ✓ Upland utility work at point of connection near fuel tanks. *(Additional Scope)*
- ✓ Vending Shelter (utility room, digital info board, restroom) *(Additional Scope)*
- ✓ Security Gate at Marginal Float 2 *(Additional Scope)*
- ✓ Commercial Capacity sewage pump-out system *(Additional Scope)*
- ✓ *Selective demo and retrofit of Fuel Dock to serve as a Guest Dock (Addtnl)*

PROJECT TIMELINE



Budget Elements



- ✓ Budget: CIP# 2-0-073-01
- ✓ Construction Budget: \$7,900,000
- ✓ Engineer's Estimate: \$7,775,645
- ✓ Approved OLDCC Grant Construction value: \$4.05MM

REQUESTED COMMISSION ACTION

Port Staff requests the Commission authorize an additional \$500,000 for additional design and construction phase services for the Fuel Dock Reconstruction project.