



Mukilteo Waterfront Project Update

March 8, 2023

Lisa Lefeber
CEO/Executive Director
Port of Everett



Mukilteo Waterfront – What we’ve been up to...

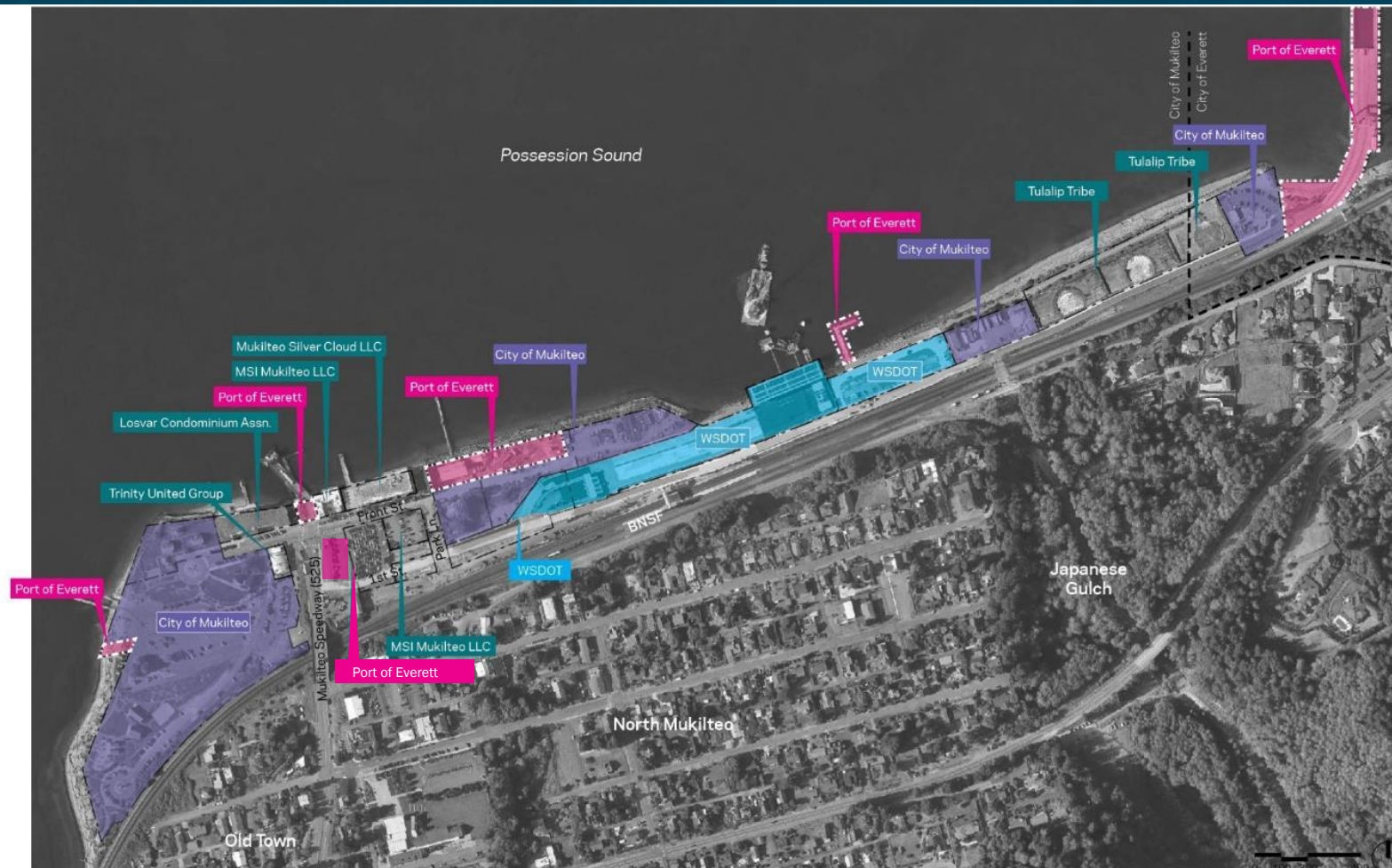
Revisioning

- ✓ *The Port hired NBBJ, a Seattle architecture, planning and design firm, to help with this process and visioning planning through 2022.*
- ✓ *Formed a diverse stakeholder workgroup that represents the varied interests and attractions at the waterfront; this group was intentionally a small group representing the broad interests of the waterfront.*
- ✓ *Held workgroup sessions to discuss current waterfront opportunities and constraints, vision for it’s future, and important principles for which future planning and discussions should be centered.*
- ✓ *Opportunity for individual interviews with City Council members and others to gather feedback.*
- ✓ *Developed draft vision statement and draft set of guiding principles.*
- ✓ *Extensive public outreach and feedback via open house and survey.*
- ✓ *Finalized and adopted community informed vision statement and set of guiding principles for future redevelopment.*
- ✓ *Working on artist renderings to be able to communicate visually what is possible.*



Mukilteo Waterfront – 10 Owners, 26 Acres

- Port of Everett
- Municipal
- State of Washington
- Private Owners





MY *Mukilteo*
WATERFRONT

OPEN HOUSE

175

ATTENDEE
SIGN-IN

225+

ESTIMATED ATTENDEES

284

COMMENTS

PUBLIC SURVEY

559

UNIQUE RESPONDERS

88%

RESPONSE RATE OF
OPEN ENDED QUESTIONS



MY *Mukilteo*
WATERFRONT

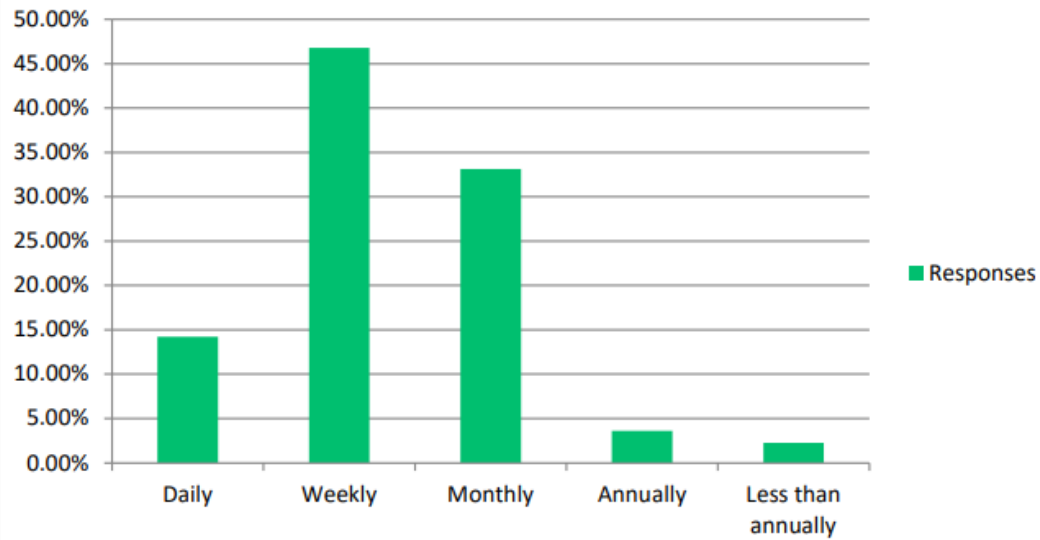
WORD CLOUD - ALL OPEN HOUSE COMMENTS



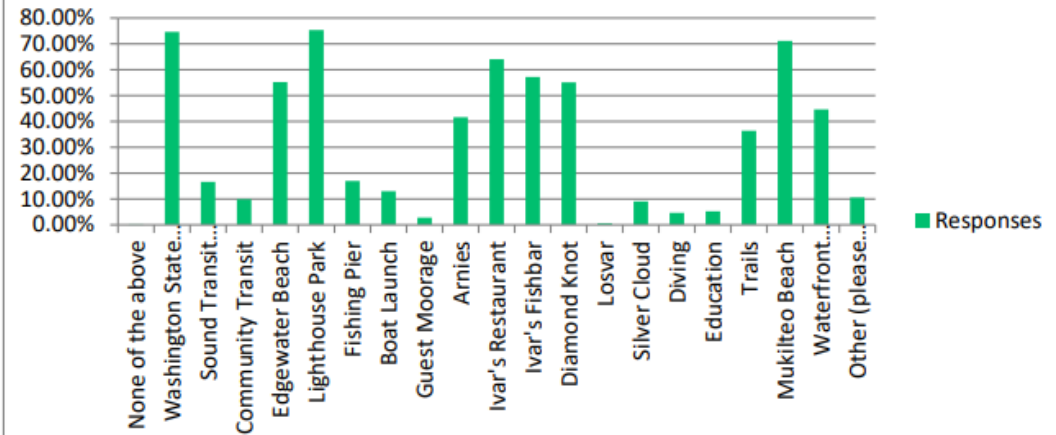


SURVEY DATA

How often do you visit the waterfront?



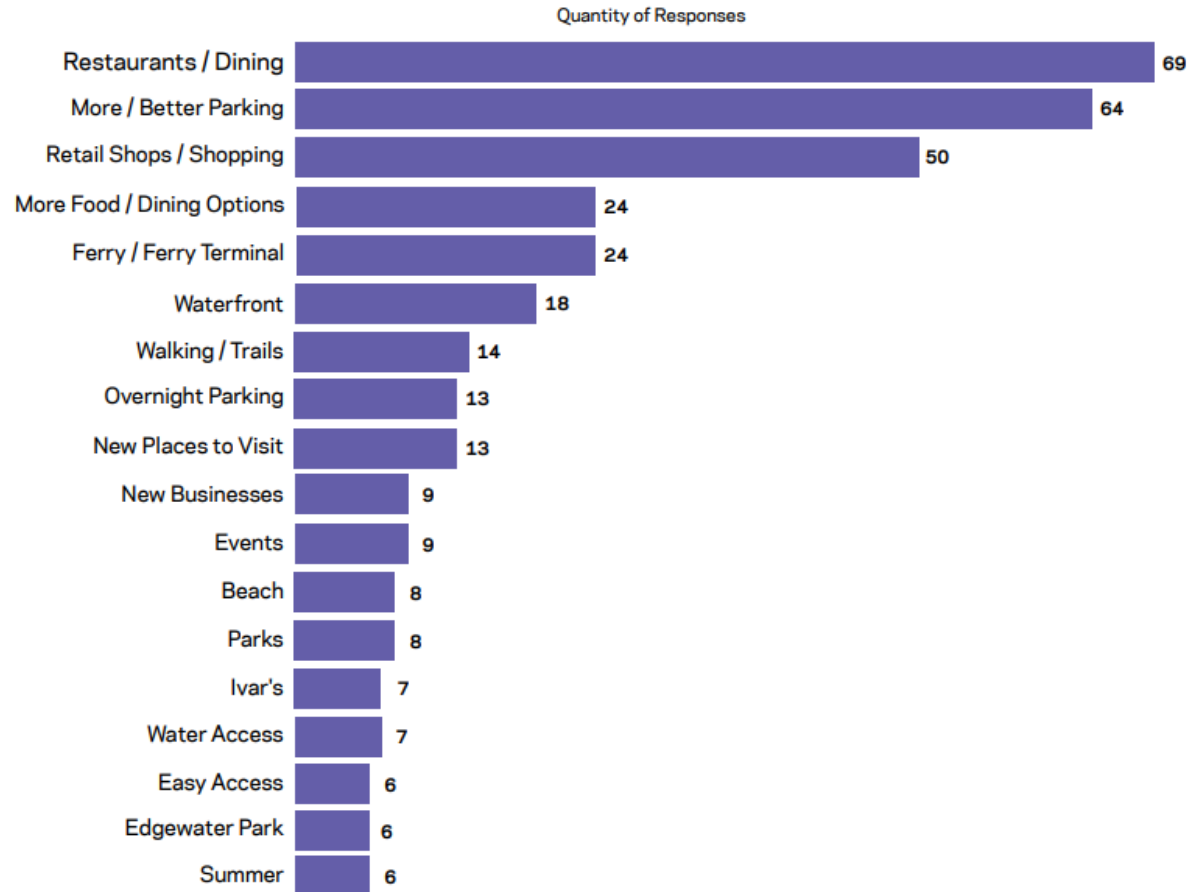
What amenities do you make use of when visiting the waterfront? (select all that apply)





SURVEY DATA

WHAT WOULD ENCOURAGE YOU TO VISIT THE WATERFRONT MORE OFTEN OR RECOMMEND A VISIT TO OTHERS?





MY *Mukilteo*
WATERFRONT

Vision Statement

Mukilteo's waterfront is a welcoming and convenient gathering place. It provides a year-round mix of uses that promotes culture, recreation and entertainment. It offers easy access to the beach, businesses and wonders of the Salish Sea.

The approved Guiding Principles are:

- ✓ *Authentically Mukilteo*
- ✓ *Pedestrian Friendly*
- ✓ *Year-Round Destination*
- ✓ *Environmentally Responsible & Sustainably Minded*
- ✓ *Celebrates Culture*
- ✓ *Thoughtful Parking*
- ✓ *Education Focused*
- ✓ *Transportation & Maritime Hub*
- ✓ *Boating & Shoreline Access*

Adopted unanimously by Port Commission & Mukilteo City Council

NOAA Acquisition



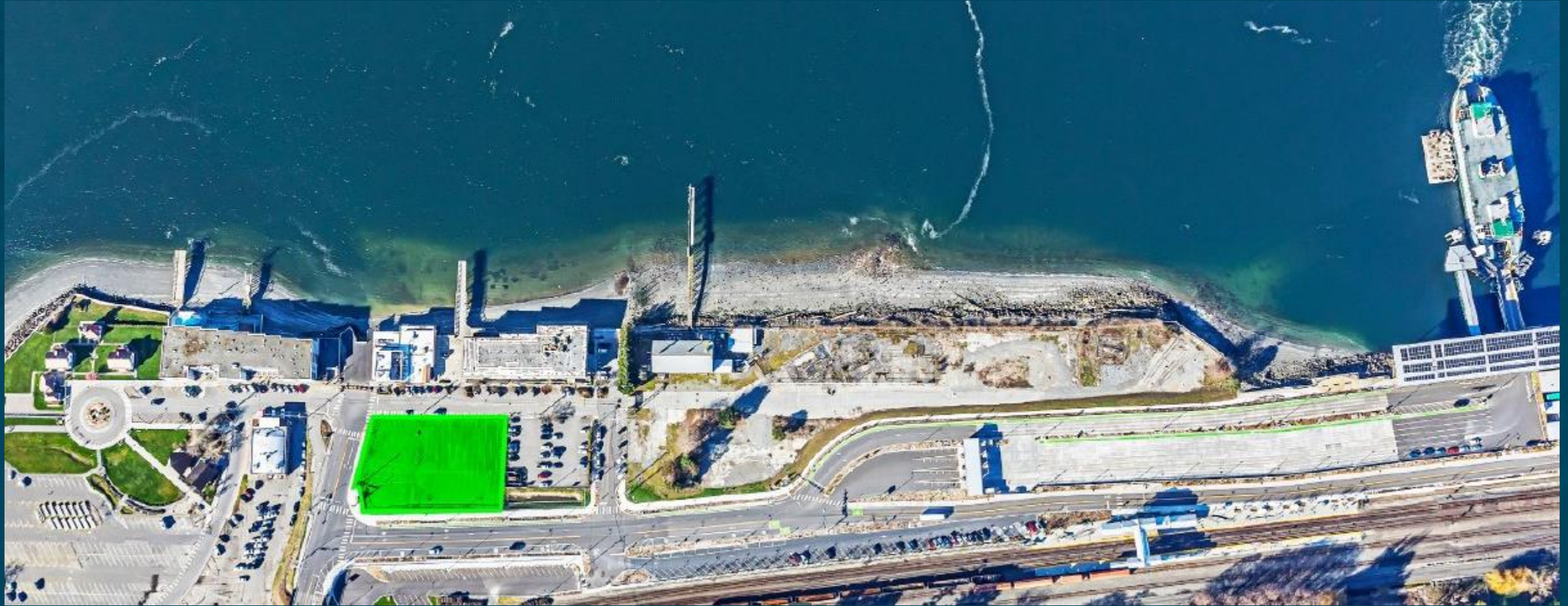
Port of
EVERETT

nbbj



CITY OF
MUKILTEO

Port Acquired Former Ferry Holding Lanes



Port of
EVERETT

nbbj

CITY OF
MUKILTEO

Activating Parklet



Fisherman's Harbor Example



RMC Architects | Stephanie Bower, Architectural Illustration



Port of
EVERETT

nbbj



CITY OF
MUKILTEO

Mukilteo Waterfront Now



Preliminary Artist Renderings



Front Street Now



Preliminary Artist Rendering – Front Street



NOAA + City Site Now



Preliminary Artist Renderings - NOAA + City Site



Tulalip Tribes Site Now (Former Tank Farm)



Preliminary Artist Rendering - Tulalip Tribes Property



2022 Recap & Next Steps

All dates are tentative and subject to change.

Q1 2022

- Hired NBBJ for planning
- Mukilteo Waterfront Stakeholder Focus Group Meetings
- Port/City Updates

Q2 2022

- Launch public survey
- Summarize feedback and provide recommendation on path forward
- Held public open house

Q3 2022

- Port/City adopt Vision and Guiding Principles for the Mukilteo Waterfront Development
- Port opens new Parklet/Outdoor dining
- Port acquires key parcel for unified waterfront development

Q4 2022

- Contracts with artist for renderings
- NOAA site cleared/preparing transfer documents


Q1/Q2 2023

- Commission Retreat to present artist renderings
- Recommended roles and responsibilities of partnership
- Open interim parking lot

Q3 2023

- Decision point to determine if a partnership agreement can be reached and/or the parties develop their parcels individually


Recommended Partnership Structure

 City of Mukilteo Lead

 Washington State Lead

 Port of Everett Lead

 Port/City Partner

 Tulalip Tribes Lead





Port of
EVERETT

nbbj



CITY OF
MUKILTEO

Q&A

