



# South Marina Destination Retail Progress Update: 30% Design

Jan. 10, 2023

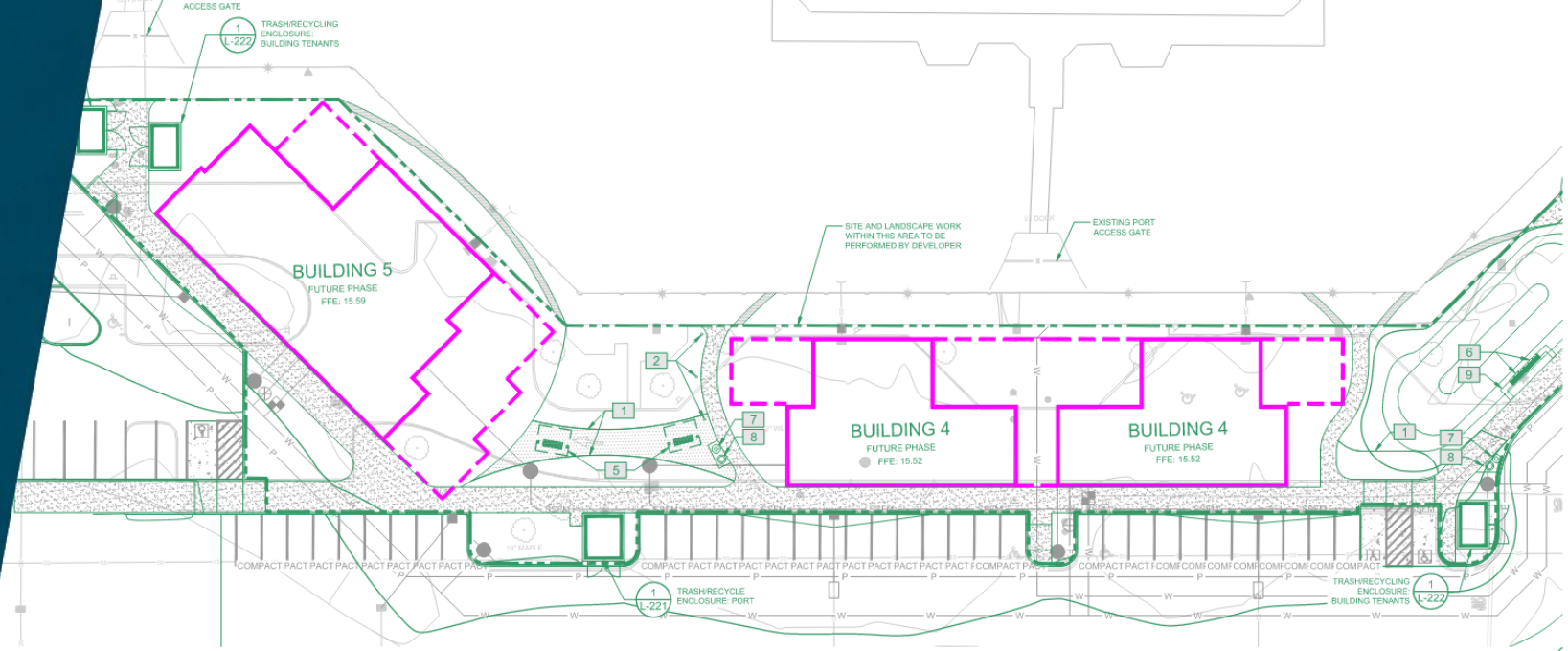
---





**Joe Eagle**

PROJECT MANAGER  
PORT OF EVERETT




# 30% Design Development




-  Project Overview: Construction of (3) multi-tenant retail buildings, complimented with landscape and hardscape improvements, along the central esplanade of South Marina
-  Provides approximately 15,000sf of prime retail space for multiple tenants.
-  Combined effort with Developer – Port scope consists of Site & Soil improvements
-  On track for opening Spring 2025

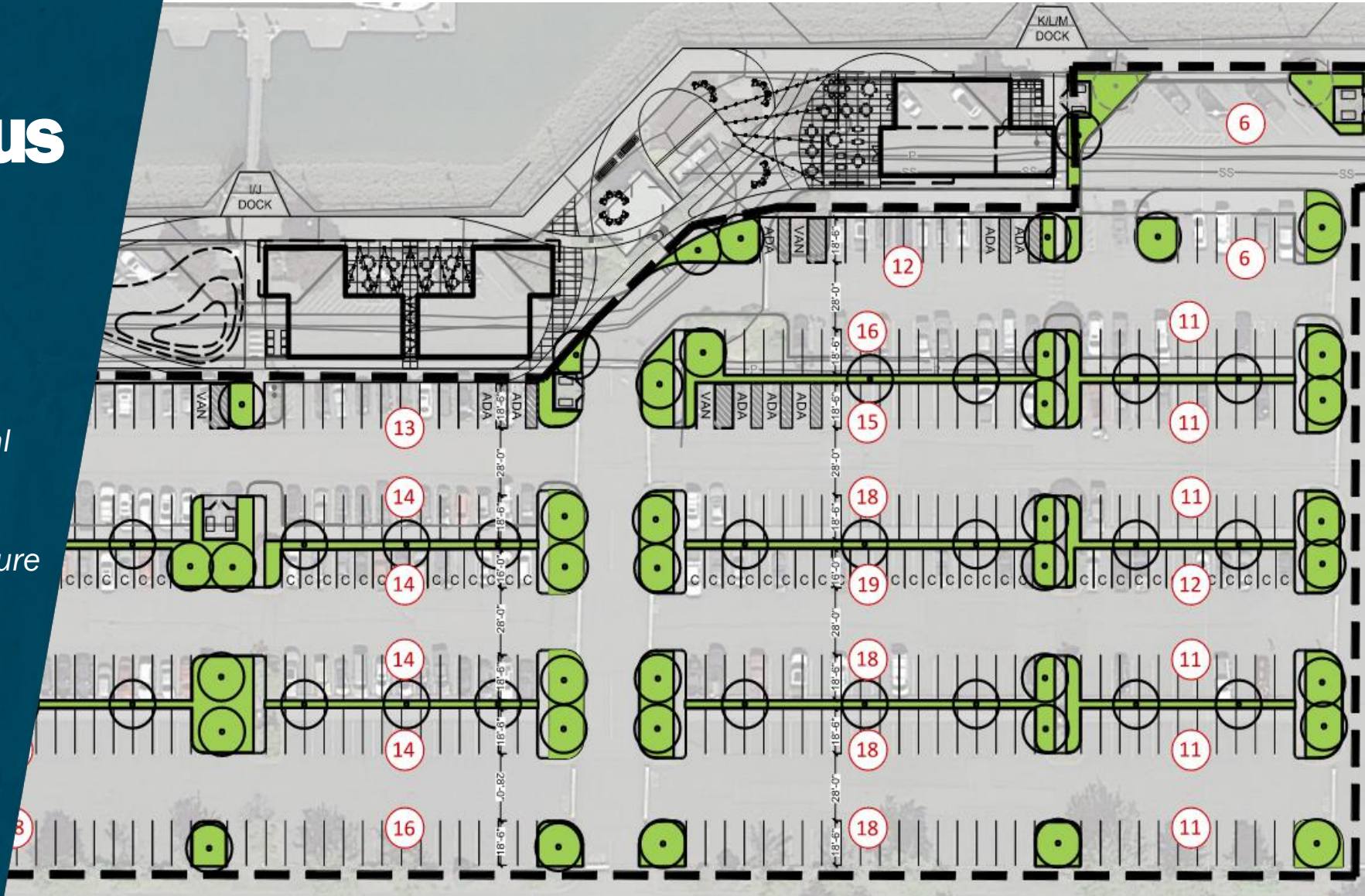


# Elements of Focus

 Maximize accessibility – parking, pedestrian & dock access

 Align Site/Civil efforts with Architectural building design

 Pre-planning with City of Everett to ensure smooth permit process



# **INFORMATIONAL UPDATE**

---

NO ACTION REQUIRED

**COMMENTS OR QUESTIONS?**