



Fuel Dock Reconstruction
Request Authorization to Bid
April 13, 2023

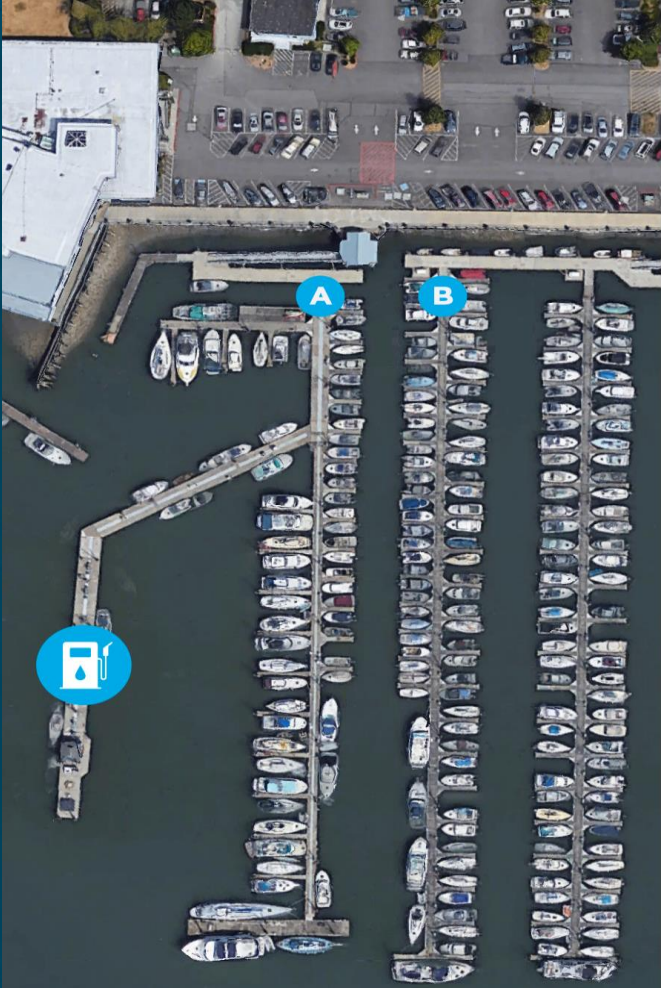
Joe Eagle
PROJECT MANAGER
PORT OF EVERETT



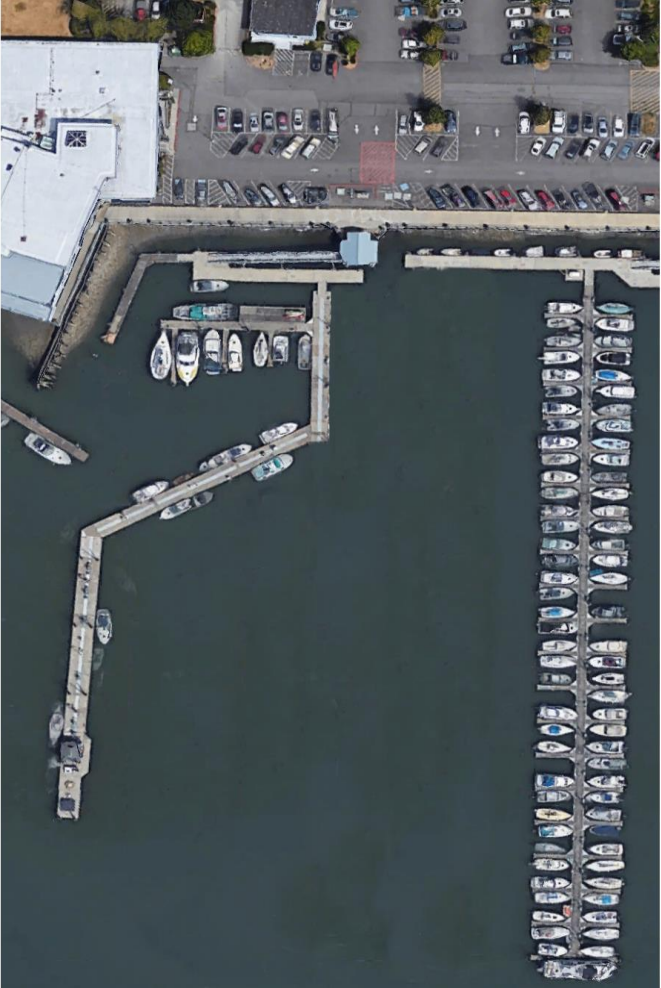
PROJECT ELEMENTS

- ✓ Demolition of Existing Floats “A” and “B”
- ✓ New 500-ft post-tensioned concrete Dock assembly
 - ↑ North 200-ft for short-term service w/commercial grade pump out
 - ↓ South 300-ft segment dedicated to Fueling operations
- ✓ 6 Dispensers, 12 Nozzles; including ultra-high flow Diesel dispensers
- ✓ Fuel Attendant Building
- ✓ Vending Shelter (ice, snacks, digital info board, restroom)
- ✓ New Fuel lines from upland point of connection near gate house.

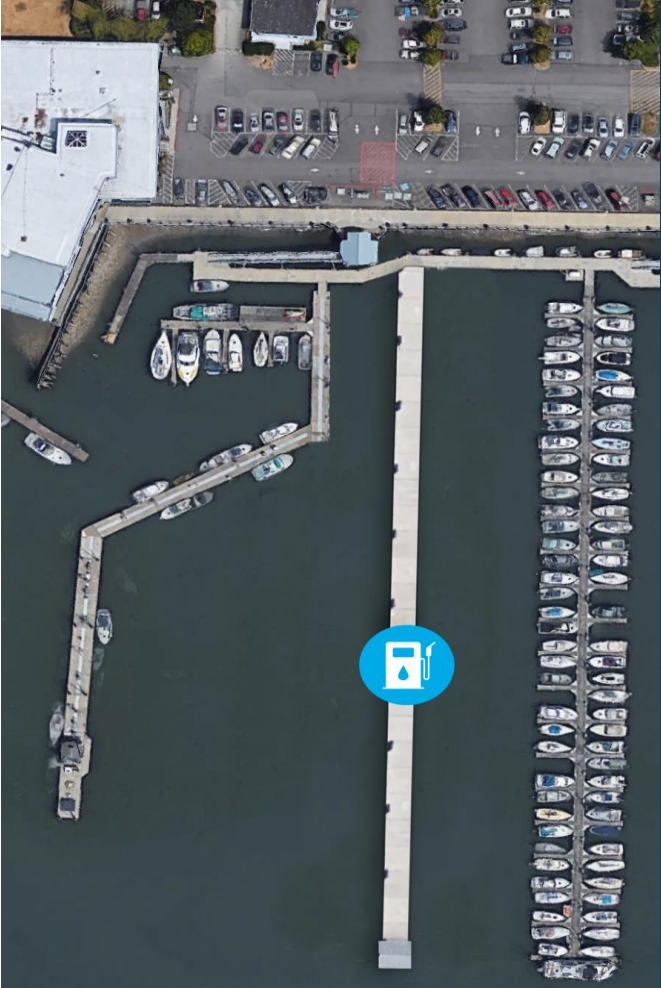
PROJECT SITE & SEQUENCE



Existing Conditions

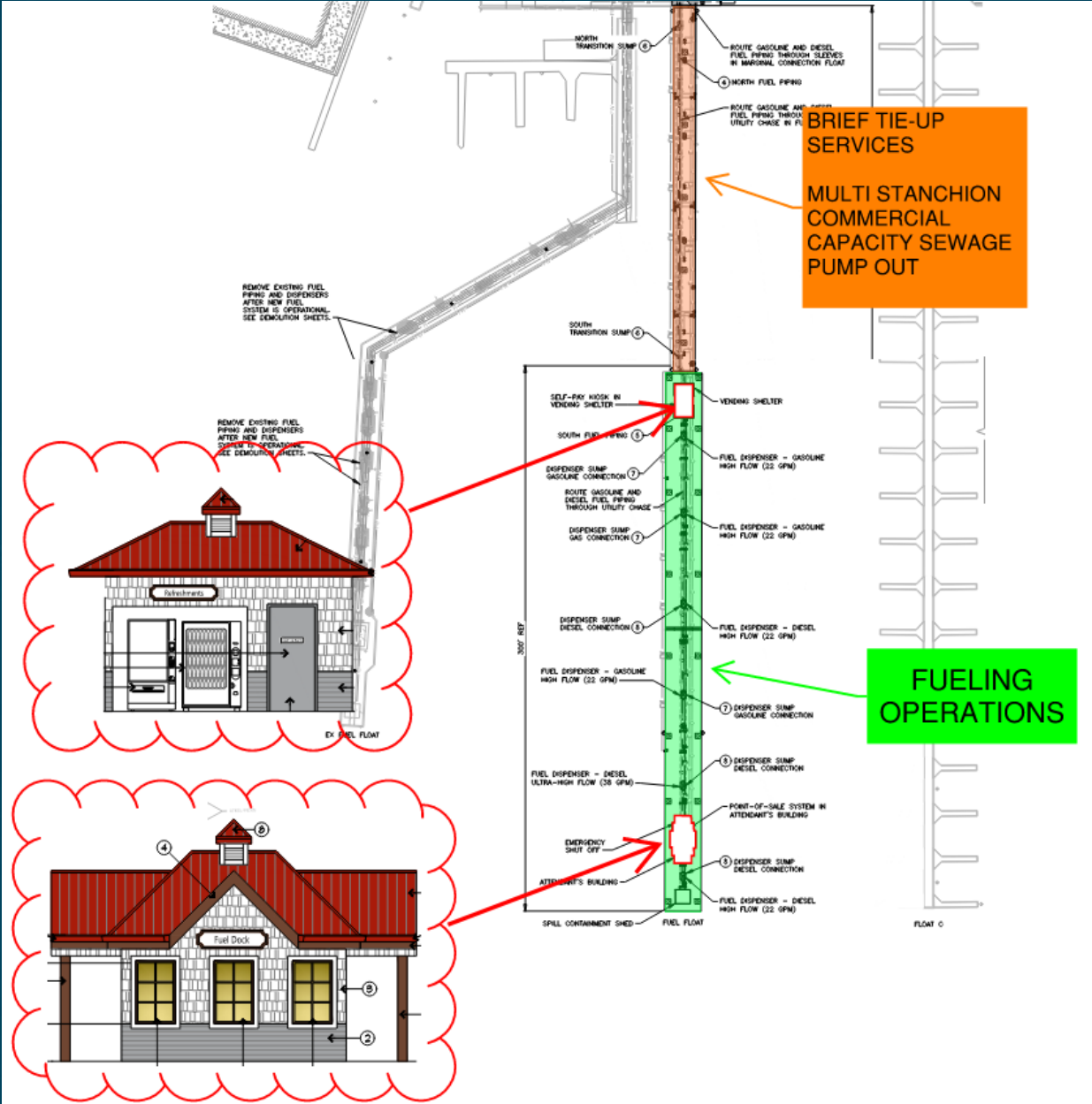


**Demo
A & B Docks**

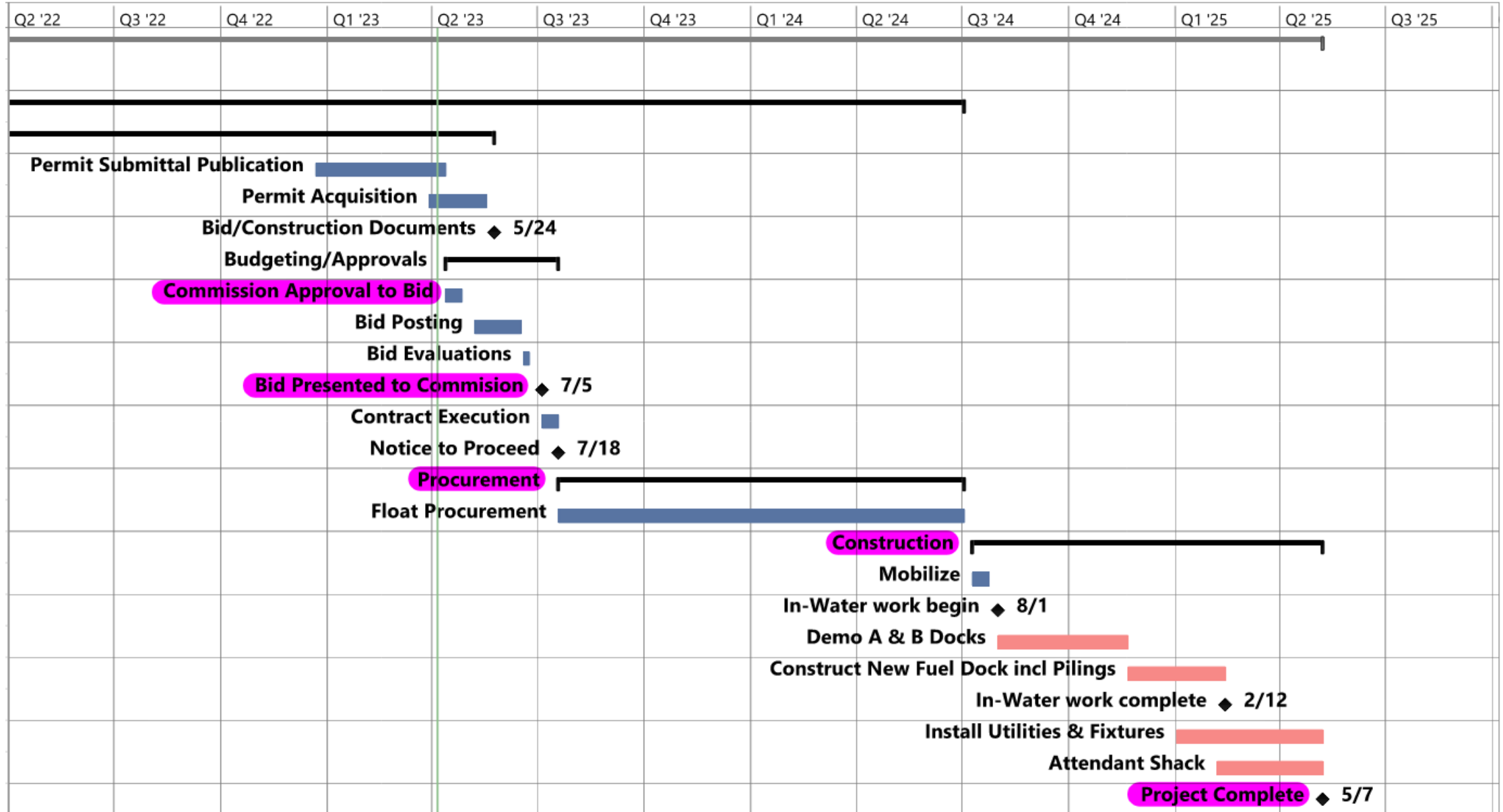


**Construct new
fuel dock & fuel shack**

LAYOUT & AMMENITIES



PROJECT TIMELINE



Budget Elements



- ✓ Budget: CIP# 2-0-073-01
- ✓ Construction Budget: \$7,900,000
- ✓ Engineer's Estimate: \$7,775,645
- ✓ Approved OLDCC Grant Construction value: \$4.05mm

REQUESTED COMMISSION ACTION

Port Staff Requests Commission authorization to solicit bids for the Fuel Dock Reconstruction project.