



**SEA THE
FUTURE
WITH US**

Waterfront Place Central – Millwright Loop Roads Phase 2 Infrastructure & Roadways

Elise Gronewald, P.E., PMP
Port of Everett
April 5, 2023



@portofeverett | #portofeverett



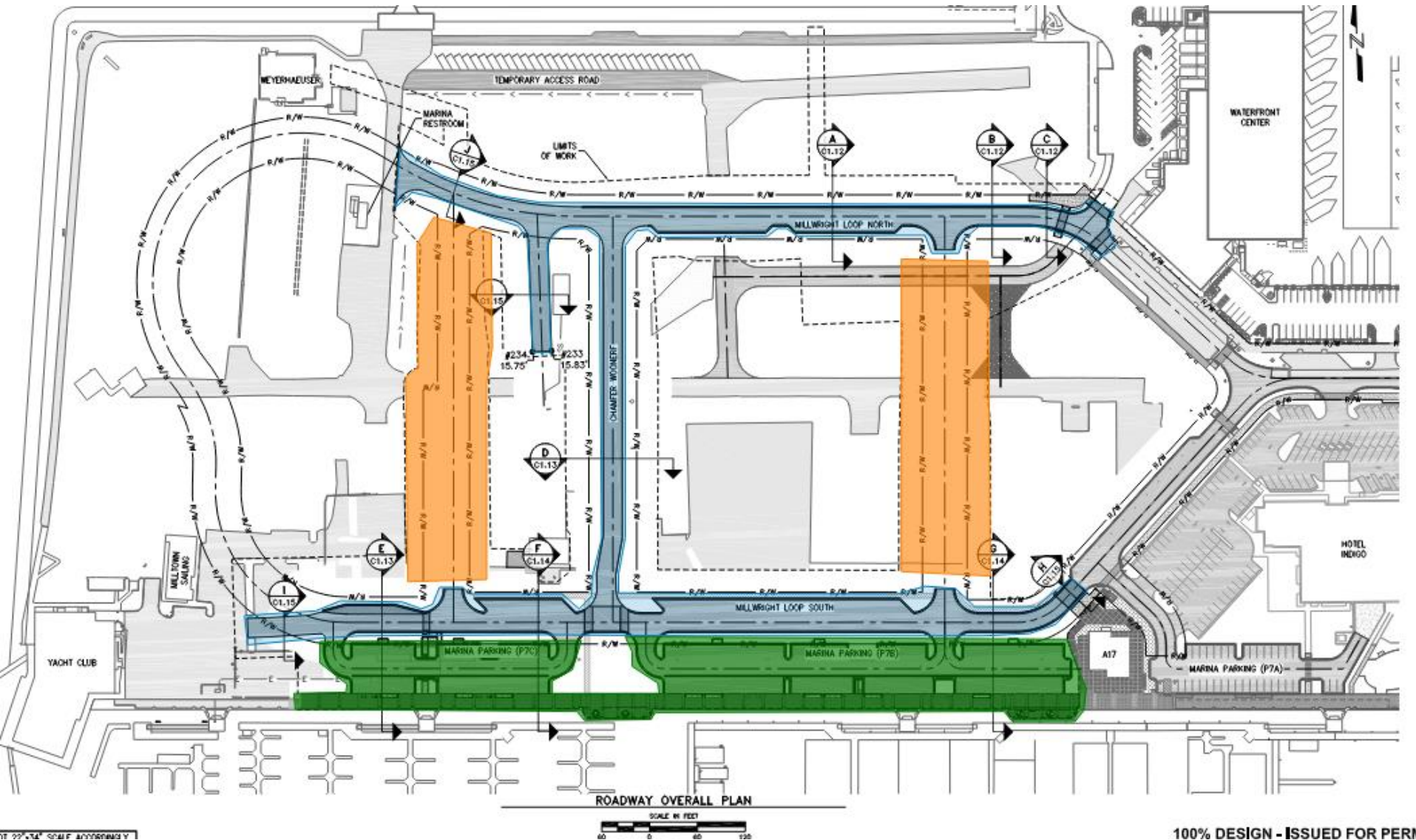
**WATERFRONT
PLACE**
@ PORT OF EVERETT

TODAY'S PRESENTATION

- Request Authorization to Bid: Millwright Loop Roads Phase 2 – Infrastructure & Roadways



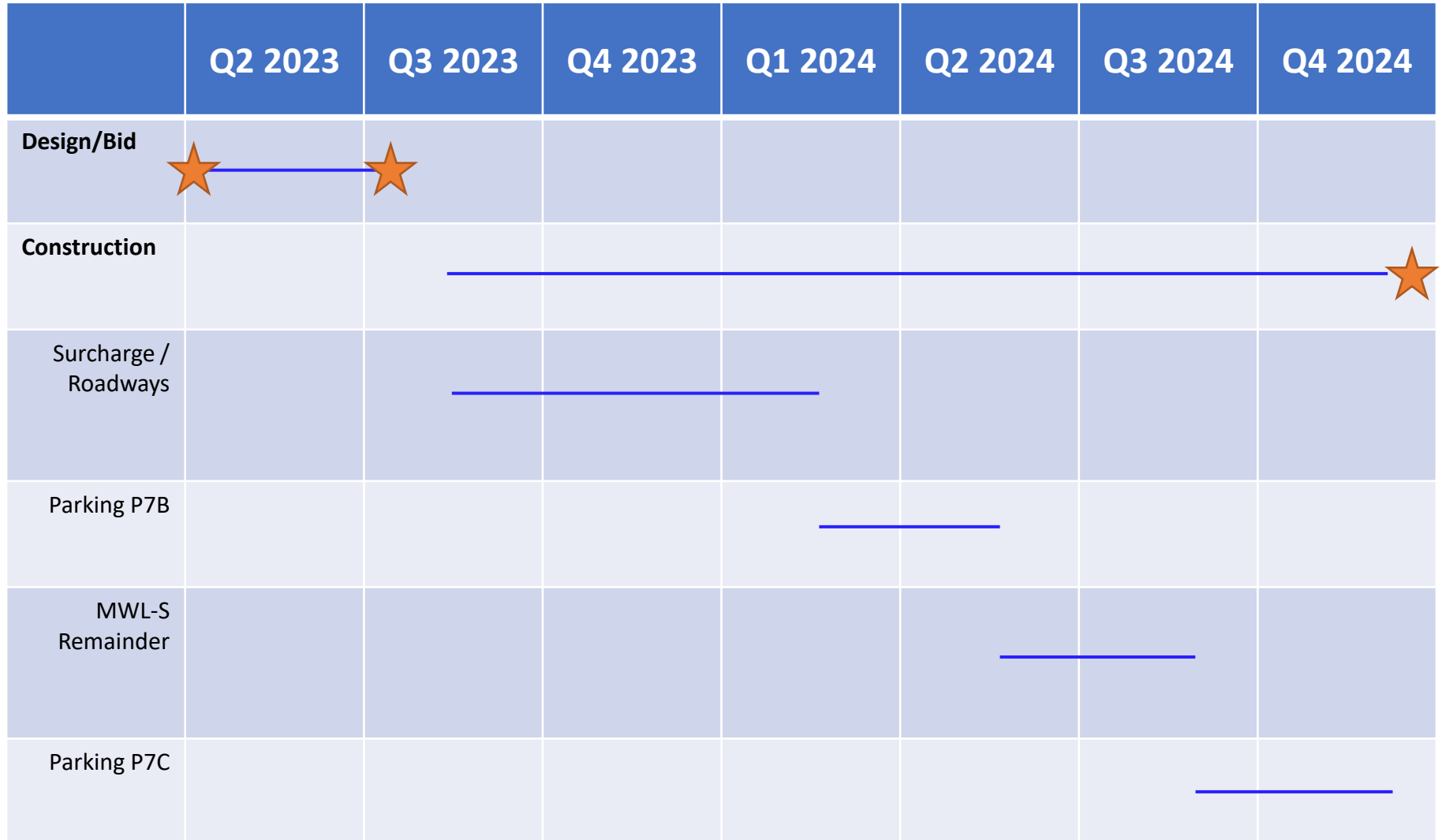
PROJECT SITE WORK



PROJECT DETAILS

- All new utilities:
 - Sewer force main and lift stations
 - Storm lines and treatment
 - Natural gas
 - Water main & irrigation lines
 - Electrical & communication lines, all new lighting
- New roadways (MWL-N, MWL-S, Chamfer)
- Two new Marina Tenant parking lots (gated)
- Completed Esplanade along bulkhead
- Budget: CIP 2023-2024 Construction Budget = \$13,200,000
- Current ROM exceeds Construction Budget, depending on Bids, the CIP budget may need to be adjusted. Value Engineering is underway.

PROJECT TIMELINE



Commission Action Req'd

WORK PHASING CONT'D

MILLWRIGHT LOOP CONSTRUCTION SEQUENCING

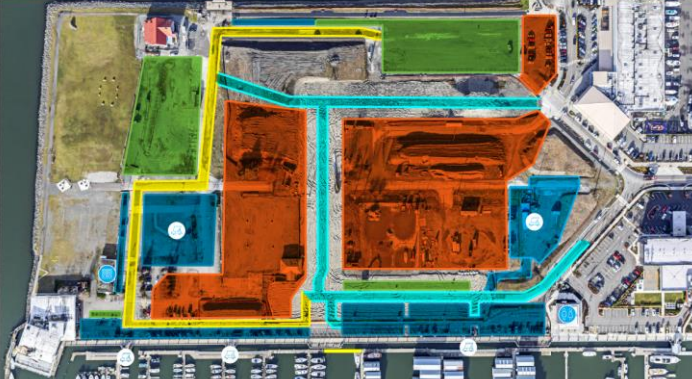
PHASE 4 | TIMELINE: MAY 2024 - JULY 2024

PHASE 4 SCOPE

- Construct final segment of Millwright Loop (roadways, utilities)
- Construct new Marina Slipholder parking lot adjacent to western gatehouse
- Construct western esplanade expansion and vista

PROJECT KEY

- TEMPORARY ROAD
- COMPLETED ROAD
- SHUTTLE LOT (IF NEEDED)
- SLIPHOLDER PARKING
- VISITOR PARKING
- CONSTRUCTION ZONE
- MARINA SLIPHOLDER SHUTTLE LOT & DROPOFF LOCATIONS



Port to continue shuttle service for boaters due to increased parking impacts; service will continue until it is no longer in demand, more information to follow

New eastern gated Marina Slipholder Parking Lot open

Two-way travel restored

Temporary utility impacts to be expected; stakeholders to receive AlertSense notifications

QUESTIONS?

Contact publicaffairs@portseattlewa.gov or visit seattle.gov/port/publicaffairs for more information.

MILLWRIGHT LOOP CONSTRUCTION SEQUENCING

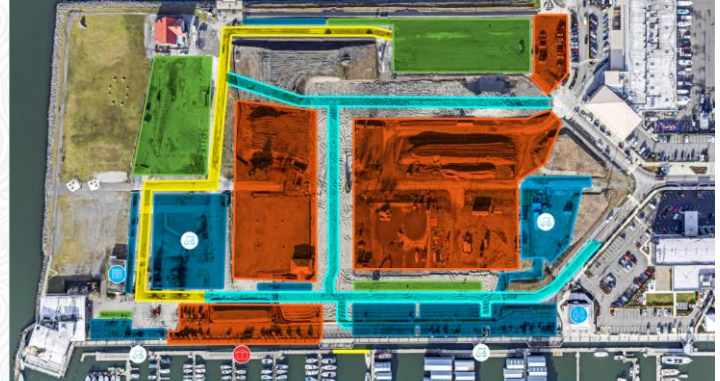
PHASE 5 | TIMELINE: JULY 2024 - NOVEMBER 2024

PHASE 5 SCOPE

- Construct final segment of Millwright Loop South (roadways, utilities)
- Build western Marina Slipholder parking lot
- Construct western esplanade expansion and vista

PROJECT KEY

- TEMPORARY ROAD
- COMPLETED ROAD
- SHUTTLE LOT (IF NEEDED)
- SLIPHOLDER PARKING
- VISITOR PARKING
- CONSTRUCTION ZONE
- SHUTTLE PARKING & DROPOFF LOCATIONS



Port to continue shuttle service for boaters due to increased parking impacts; service will continue until it is no longer in demand, more information to follow

New eastern Marina Slipholder Parking Lot open

Anticipate temporary 10-day closure of Central B + F Docks Gatehouse; advanced notice and alternate access provided

Two-way travel restored

QUESTIONS?

Contact publicaffairs@portseattlewa.gov or visit seattle.gov/port/publicaffairs for more information.

MILLWRIGHT LOOP CONSTRUCTION SEQUENCING

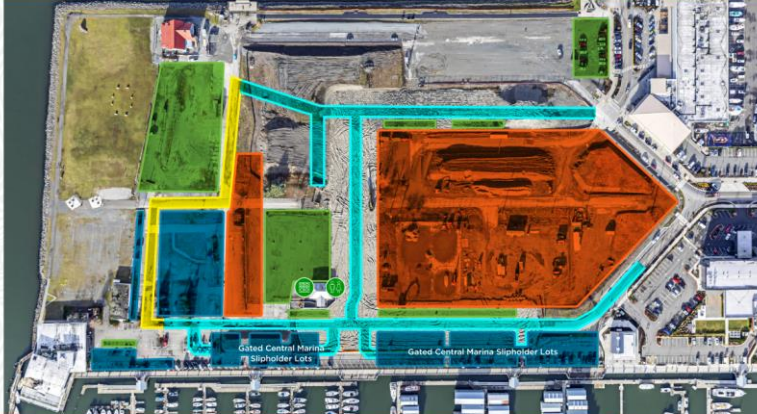
FINAL SITE | TIMELINE: END OF 2024

FINAL PROJECT OUTCOME

- Two brand new gated marina tenant parking lots
- Complete roadway system and necessary utility connections for Millwright District private development
- Completed Esplanade expansion and two new vistas down to B/C Docks
- Marina visitor parking restored
- New garbage enclosures

PROJECT KEY

- MILLWRIGHT LOOP ROAD
- COMPLETED ROAD
- SLIPHOLDER PARKING
- VISITOR PARKING
- DEVELOPER LOT (POTENTIALLY UNDER CONSTRUCTION)



Central Marina laundry reopens

Central Marina restrooms and showers reopen

Two brand new gated marina tenant parking lots

QUESTIONS?

Contact publicaffairs@portseattlewa.gov or visit seattle.gov/port/publicaffairs for more information.

BOATER COORDINATION

- Informational Phasing boards up at CM gatehouses
- Boater meeting April 12th
- Project website up and running with contact info
- Shuttle service to begin May/June 2023
 - M-Sun 7AM to 7PM
 - Marina Office hiring seasonals to drive cart

REQUESTED COMMISSION ACTION

Request Commission authorization for Port Staff to solicit bids for the Millwright Loop Roads Phase 2 – Infrastructure & Roadways project.

A large container ship is docked at a pier. A crane is visible on the left side of the ship, and a forklift is on the pier to the right. The ship has "Westwood Shipping Lines" written on its side. The image is dark and has a blue tint.

**COMMENTS OR
QUESTIONS?**



NEXT 100

WE PROVIDE VALUE: WE CREATE ECONOMIC OPPORTUNITIES

THANK YOU!



@portofeverett | #portofeverett