



**SEA THE
FUTURE
WITH US**

Comprehensive Scheme of Harbor Improvements Update

Garrett Jensen
Associate Port Planner
September 20, 2022



@portofeverett | #portofeverett



PRESENTATION OUTLINE

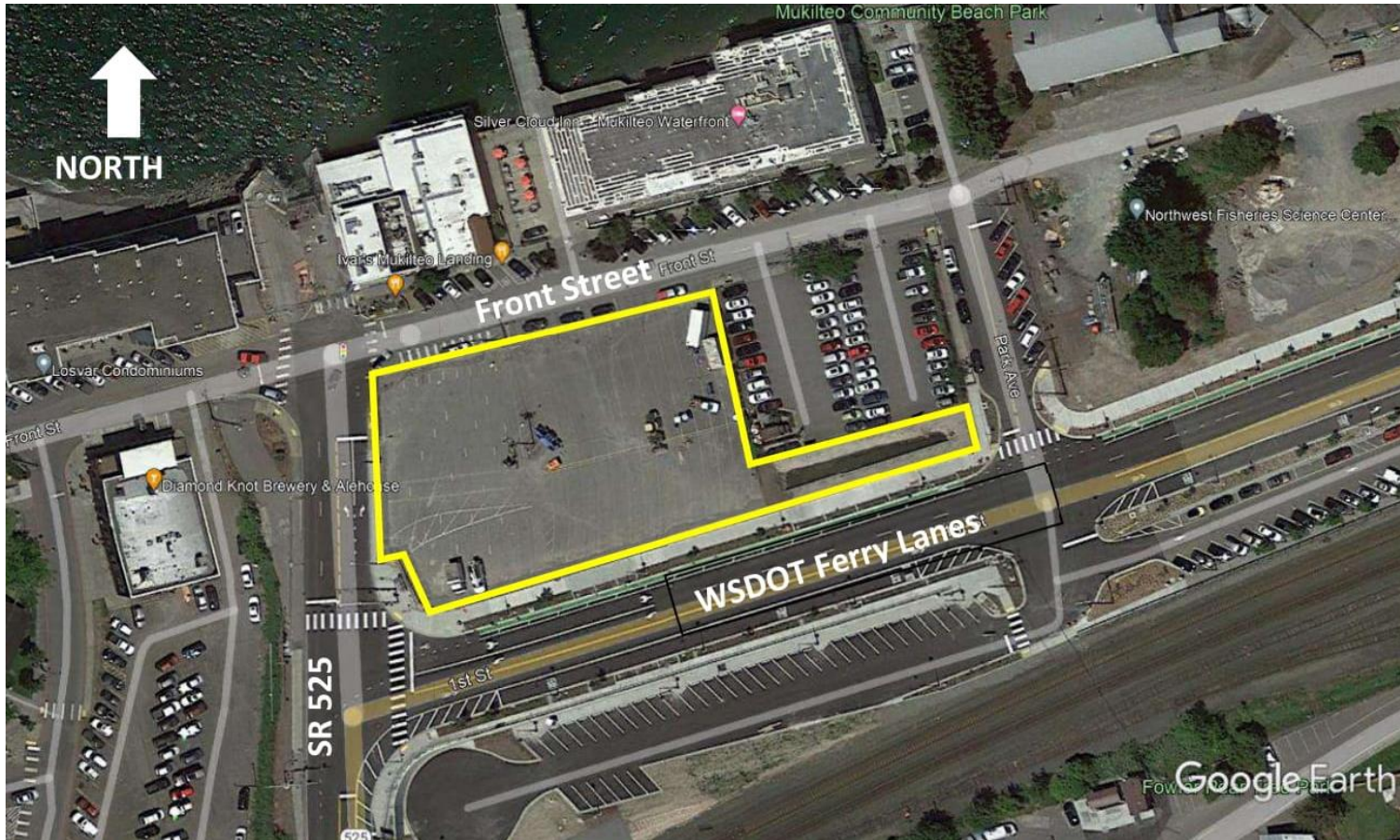
- Comprehensive Scheme of Harbor Improvements
 - Overview and Purpose
 - 2022 Update – Resolution No. 1194 (2022)
- Recommended Commission Action (after Public Hearing)

COMP SCHEME OVERVIEW AND PURPOSE

- RCW Ch. 53.20 requires ports to amend their Comp Scheme as necessary, after or before the following:
 - Purchase of new property;
 - Surplus of property;
 - Adoption of plans, programs
- Amendments are authorized via Commission Resolutions after a Public Hearing is held
- Comprehensive Scheme serves to:
 - Inventory and describe future port uses of land.

2022 COMP SCHEME UPDATE

Resolution No. 1194 (2022): Purchase of Mukilteo Landing Property



0.89 acres of uplands, 707 Front Street

RECOMMENDED COMMISSION ACTION

Upon close of the open public hearing, Staff recommends the Port Commission approve Resolution No. 1194 (2022), incorporating the Mukilteo Landing property into the Port's Comprehensive Scheme of Harbor Improvements.



NEXT 100

WE PROVIDE VALUE. WE CREATE ECONOMIC OPPORTUNITIES

THANK YOU!



@portofeverett | #portofeverett