



Mukilteo Waterfront Project Update

May 3, 2022

Lisa Lefeber
CEO/Executive Director
Port of Everett



Mukilteo Waterfront – What we've been up to...

Revisioning

- ✓ *The Port hired NBBJ, a Seattle architecture, planning and design firm, to help with this process and visioning planning through 2022.*
- ✓ *Formed a diverse stakeholder workgroup that represents the varied interests and attractions at the waterfront; this group was intentionally a small group representing the broad interests of the waterfront.*
- ✓ *Held three workgroup sessions to discuss current waterfront opportunities and constraints, vision for it's future, and important principles for which future planning and discussions should be centered.*
- ✓ *Opportunity for individual interviews with City Council members and others to gather feedback.*
- ✓ *Developed draft vision statement and draft set of guiding principles.*
- ✓ *Open house is planned for May 5, 4-7 p.m. at Rosehill Community Center Christiansen Room to provide opportunity for feedback and discussion with larger community.*
- ✓ *Online Survey available for those who cannot join in person; survey will be open through May 26.*

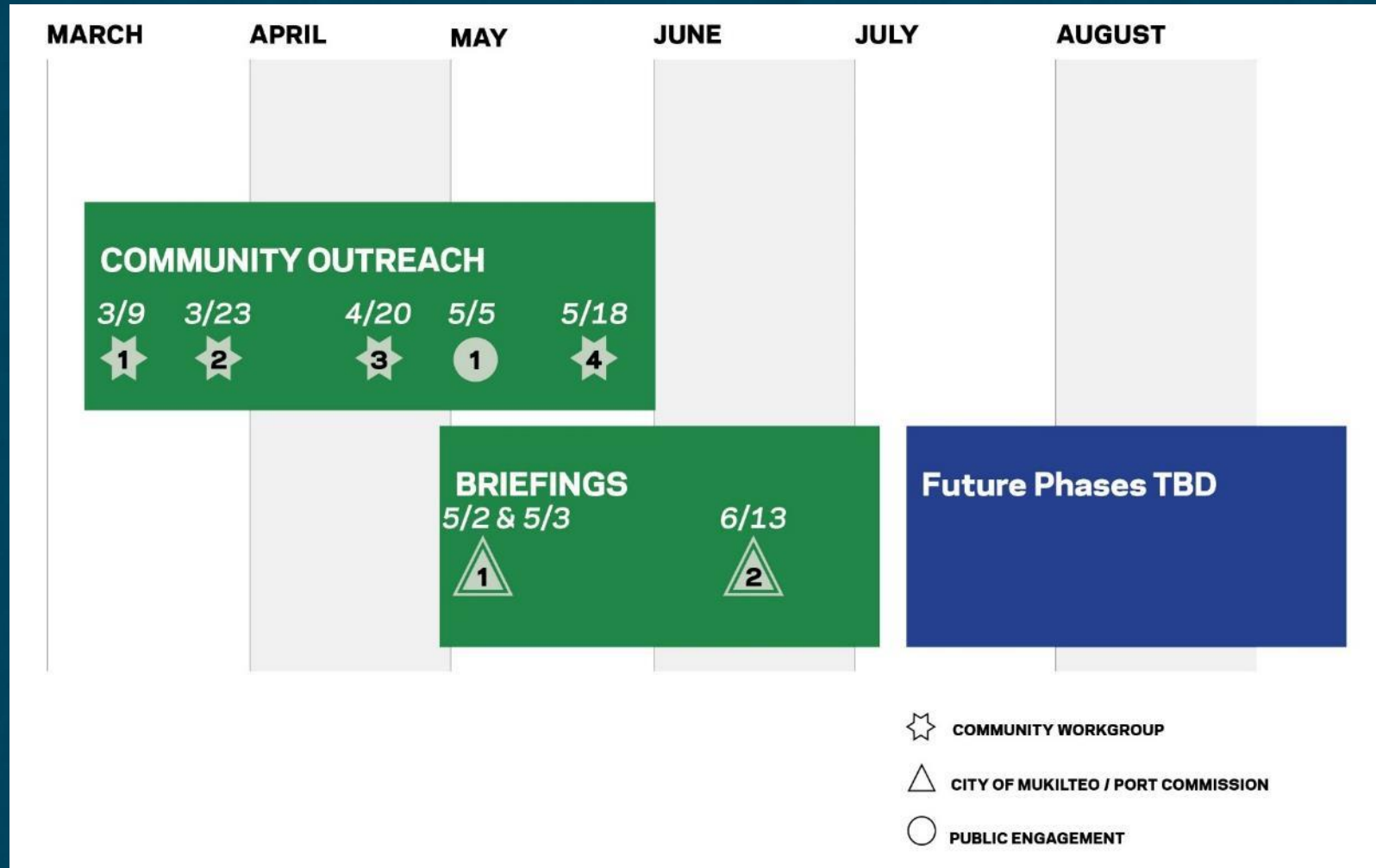


Mukilteo Waterfront – 11 Owners, 26 Acres

- Port of Everett
- Municipal
- State of Washington
- Private Owners

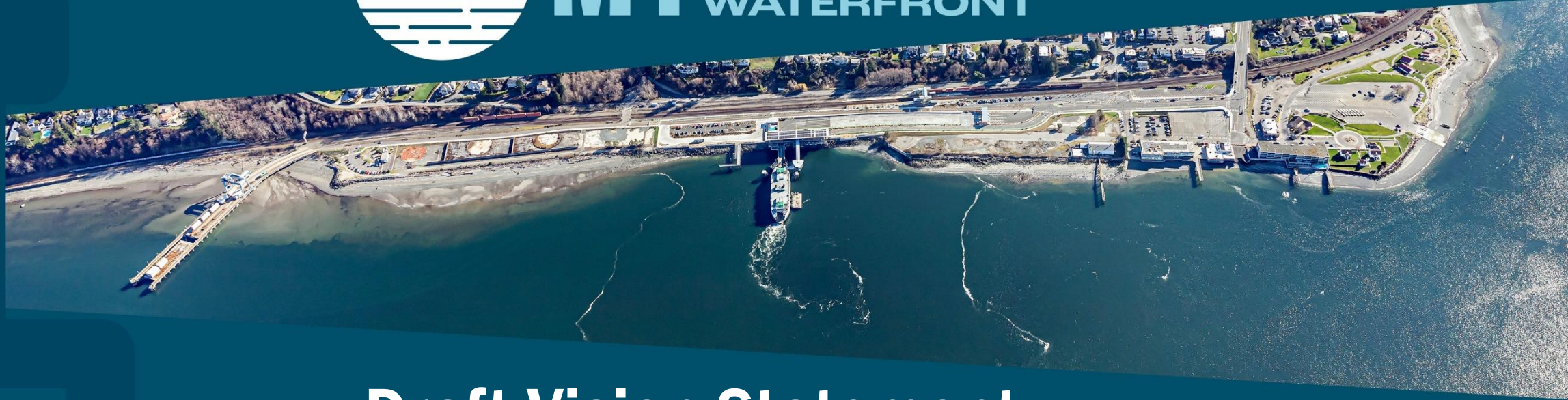


Timeline





MY *Mukilteo*
WATERFRONT



Draft Vision Statement

The Mukilteo waterfront is filled with adventure, culture and economic opportunities for the community and region. It is an equitable and convenient gathering place, which offers a sustainable mix of uses for year-round enjoyment and promotes access to the beach and wonders of the Salish Sea.



nbbj





MY *Mukilteo*
WATERFRONT

Draft Guiding Principles

Authentically Mukilteo.

Celebrate the unique attributes of the local community, emphasizing the views and direct connections to the Salish Sea while improving the public environment, to enhance the waterfront experience.



nbbj





MY *Mukilteo*
WATERFRONT

Draft Guiding Principles

Thoughtful Parking.

Develop a comprehensive and flexible parking strategy with a park once approach that accommodates all users, integrates technology and utilizes people moving transportation.



nbbj





MY *Mukilteo*
WATERFRONT

Draft Guiding Principles

Pedestrian Friendly.

Construct a safe and accessible environment for pedestrians that provides the ‘front door’ to the shoreline and new development. Waterfront development should reinforce the pedestrian scale through it’s physical design and multi-modal access.



nbbj





MY *Mukilteo*
WATERFRONT

Draft Guiding Principles

*Environmentally Responsible
& Sustainably Minded.*

Integrate innovation into new waterfront development to support environmental enhancement, resilient infrastructure, and sustainable building practices to help curb the effects of climate change and allow the unique Mukilteo environment to thrive for future generations.



nbbj





MY *Mukilteo*
WATERFRONT

Draft Guiding Principles

Celebrates Culture.

Tell the important and historically significant stories of our past and present. Honor our diversity and the Snohomish Peoples through integration of art and signage to acknowledge all who have lived, worked and thrived here in Mukilteo.



nbbj





MY *Mukilteo*
WATERFRONT

Draft Guiding Principles

Education Focused.

Provide multi-generational education opportunities for teaching the cultural, environmental and historical significance of the Salish Sea, incorporating waterfront assets seen and not seen.



nbbj





MY *Mukilteo*
WATERFRONT

Draft Guiding Principles

A Transportation & Maritime Hub.

Recognize the waterfront as a regional connection, including ferries, trains, buses, maritime facilities and other industry contributions to the economy. Balance community, tourism and operational needs for a seamless, shared use of the Mukilteo waterfront.



nbbj





MY *Mukilteo*
WATERFRONT

Draft Guiding Principles

Boating & Shoreline Access.

Support a recreational waterfront that enhances shoreline, boating and fishing access.



nbbj





MY *Mukilteo*
WATERFRONT

Draft Guiding Principles

A Year-Round Destination.

The Mukilteo waterfront is a unique regional asset. Create an attractive, vibrant district that meets the needs of residents and visitors which allows businesses to prosper. Promote a mix of uses that draw patrons both day and night, and throughout the year.



nbbj



Next Steps

- ✓ *Public open house May 5, Rosehill Community Center. 4-7pm*
- ✓ *Online survey open through May 26;
www.portofeverett.com/mukilteosurvey*
- ✓ *Workgroup session #4 to review community input, modify and refine vision statement and guiding principles as needed*
- ✓ *Present vision statement and guiding principles to Mukilteo City Council and Port Commission in June.*

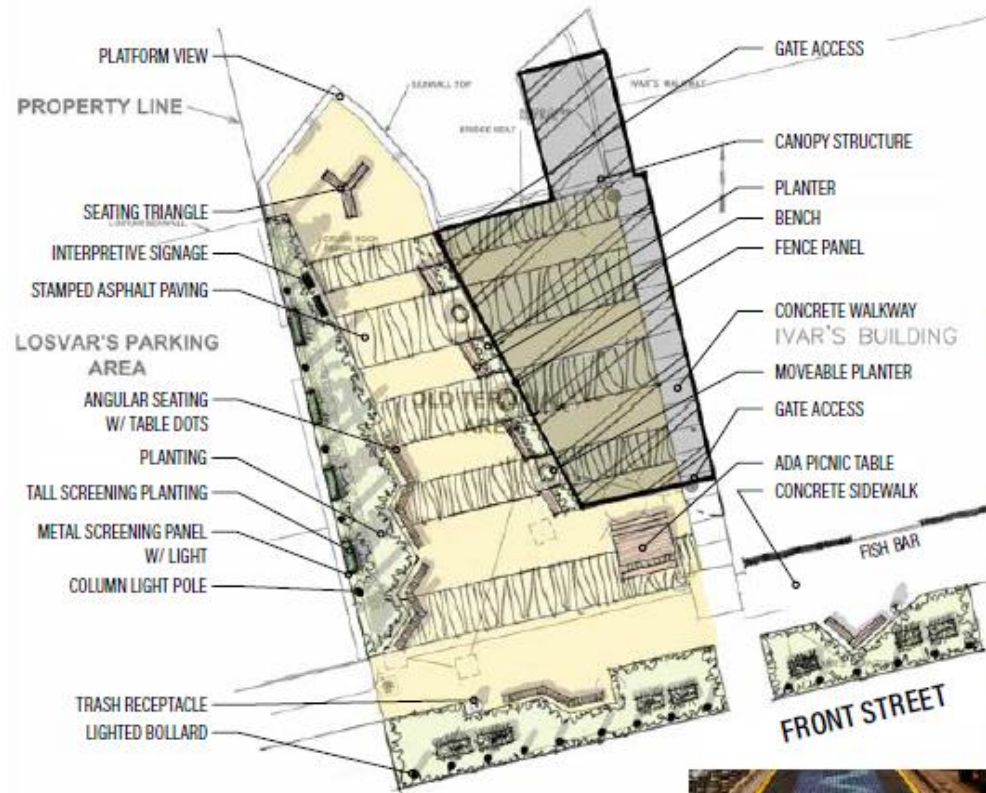


Interim Public Access Improvements 2022-2023

- ✓ **Parklet:** Renovating and revitalizing the former ferry landing next to Ivar's to provide visitors an outdoor dining area and enhanced public access at the waterfront.
- ✓ **NOAA site demolition:** As part of the transfer back to the Port, NOAA will be demolishing all of the structures which should provide an opportunity for interim access to the waterfront.



Mukilteo Parklet



COLUMN LIGHT POLE



METAL SCREEN / FENCE PANEL



LIGHTED BOLLARD



ANGULAR SEATING W/ TABLE DOT



SEATING TRIANGLE



ADA PICNIC TABLE



CHAMPAGNE COCKTAIL | PLAN



STAMPED ASPHALT PAVING



PLANTER + BENCH



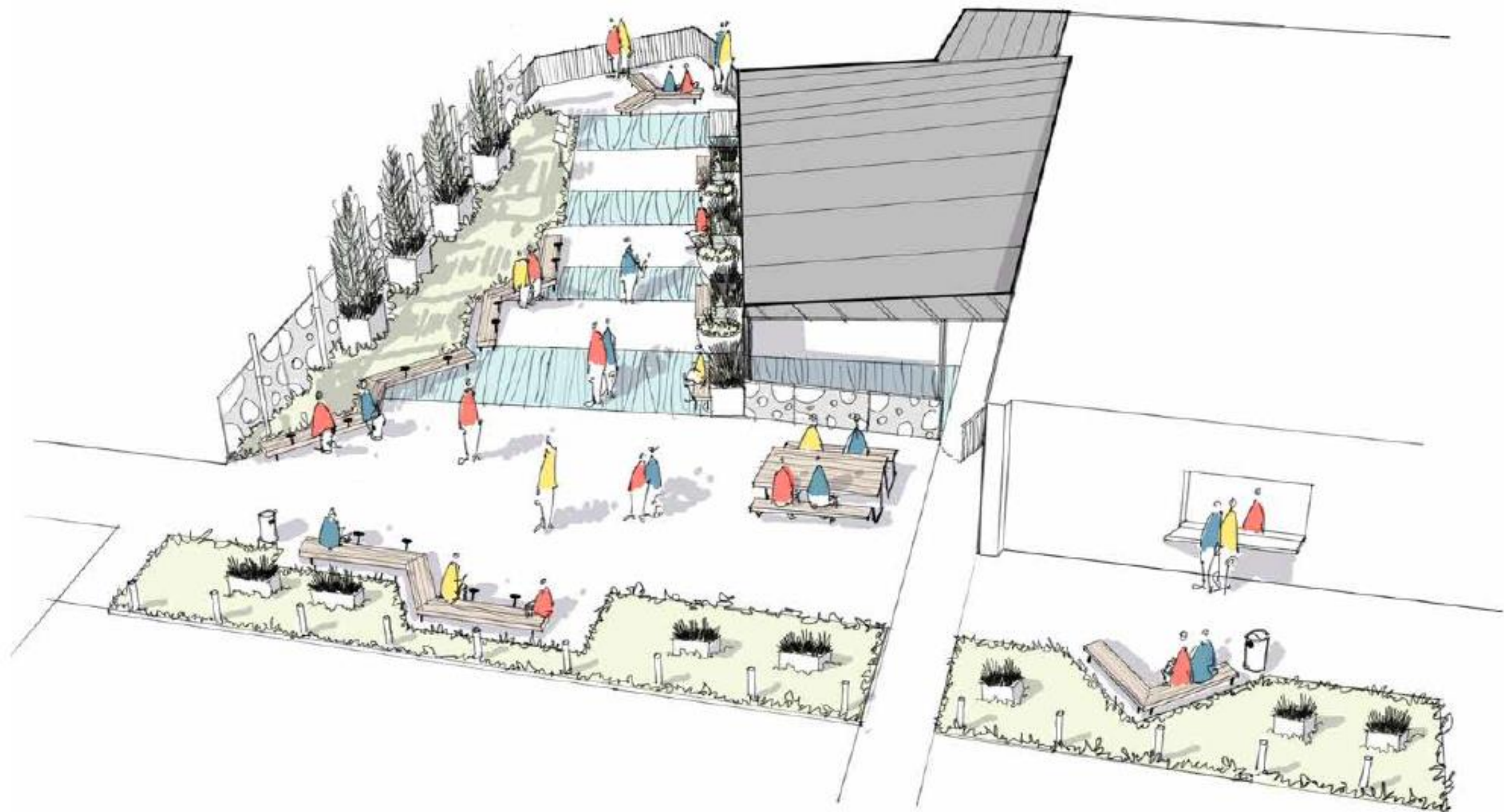
MOVEABLE PLANTER



CANOPY STRUCTURE

MUKILTEO PARKLET

HBB





MY *Mukilteo*
WATERFRONT



You're Invited!

MUKILTEO WATERFRONT REDEVELOPMENT COMMUNITY OPEN HOUSE
MAY 5 | 4 – 7 P.M. | ROSEHILL COMMUNITY CENTER



nbbj