



**SEA THE
FUTURE
WITH US**

**Maritime Industrial Expansion /
Norton Terminal
PSA 1-2020-02
Contract Modification No. 2
with KPFF Engineers**

John Klekotka
Port of Everett
January 11, 2022



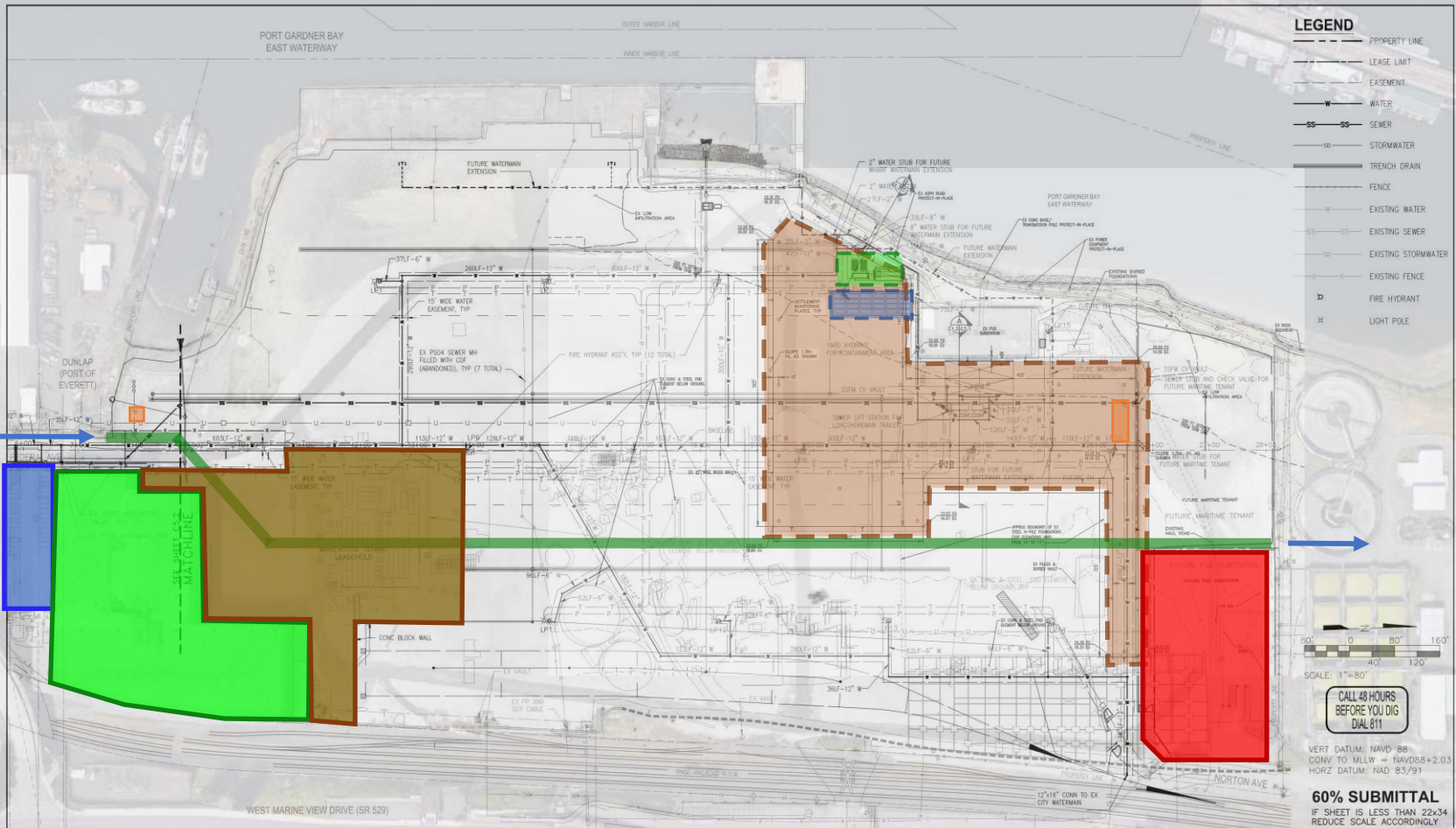
@portofeverett | #portofeverett



BACKGROUND

- Commission Strategic Goal and Capital Initiative to redevelop the former K-C site and place into productive use as a maritime industrial facility
- Public solicitation for services (RFQ) for Qualifications for consultant services issued in November and ratified by Commission in December 2019
- Received four SOQs, Interviewed three teams, and Staff recommended KPFF Consulting Engineers
- Commission authorized a Task Order based contract with KPFF in February 2020 with maximum NTE amount of \$2,600,000
- In July Commission authorized a Contract Modification No. 1 to increase contract maximum to \$3,400,000
- Today seeking approval of Contract Mod No. 2 in the amount of \$500,000

PROJECT SITE DEVELOPMENT



kpff
 1601 5th Avenue, Suite 1300
 Seattle, Washington 98101
 (206) 382-0500 Fax (206) 382-0500
 PROJECT NO. 1600120

NO.	DATE	BY	REVISION	NO.	DATE	BY	REVISION

PROJECT ENGINEER
 N. WATSON
 SCALE: 1" = 80'
 DATE: 12/04/2020
 DESIGNED BY
 J. REICHER
 DRAWN BY
 K. EDWARDS, D. YU
 CHECKED BY
 N. WATSON
 APPROVED BY

PORT OF EVERETT
 MARITIME INDUSTRIAL EXPANSION
 NORTON TERMINAL – 60% DESIGN
 WATER AND SEWER PLAN

DWG. NO. **C5.1**
 CIP NO. 1-8-900-05
 PROJECT NO. TBD
 SHEET NO. XX OF XX

CONTRACT TASK ORDER STATUS

BILLED THRU JULY 2021

TASK NO.	DESCRIPTION	BUDGET (in thousands)	% SPENT
001	Scoping	\$ 21.3	100%
002	K-C Post Closing	\$ 220.6	95%
003	Land Use and Permitting	\$ 149.0	85%
004	Design Support Services	\$ 252.6	97%
005	Conceptual Site Design / 30% Design	\$ 298.8	100%
006	PUD Substation	\$ 16.6	15%
007	60% Design	\$ 400.0	94%
008	Barge Dock Assessment	\$ 139.2	93%
009	Warehouse Assessment	\$ 70.9	87%
010	Wharf Evaluation	\$ 33.6	100%
	(continued on next slide)		

CONTRACT TASK ORDER STATUS

BILLED THRU NOV. 2021

TASK NO.	DESCRIPTION	BUDGET (in thousands)	% SPENT
	(continued from previous slide)		
011	90% Site Design	\$ 493.0	100%
012	RR Siding Track Preliminary Design	\$ 32.0	36%
013	Additional Geotechnical Analysis	\$ 83.3	81%
014	Final Design	\$ 224.5	100%
015	Construction Support for Preload	\$ 99.8	57%
016	Construction Support for MTCA Related Work	\$ 506.8	22%
017	Construction Support for Non-MTCA Related Work	\$ 246.3	39%
	TOTAL	\$3,287.7	78%

REQUESTED COMMISSION ACTION

Staff recommends the Commission approve Contract Modification No. 2 to KPFF's professional services contract, PSA 1-2020-02, in the amount of \$500,000.



NEXT 100

WE PROVIDE VALUE. WE CREATE ECONOMIC OPPORTUNITIES

THANK YOU!



@portofeverett | #portofeverett