



**SEA THE
FUTURE
WITH US**

Boat Launch Maintenance Dredge & Connector Channel Request for Contract Close-Out

Laura Gurley
Port of Everett
April 05, 2022



@portofeverett | #portofeverett





PROJECT SITE



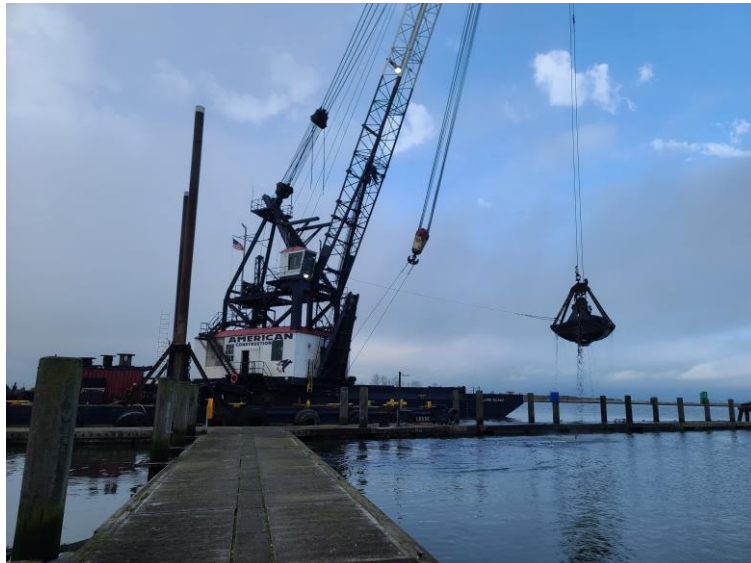
Federal Navigation Channel

BACKGROUND

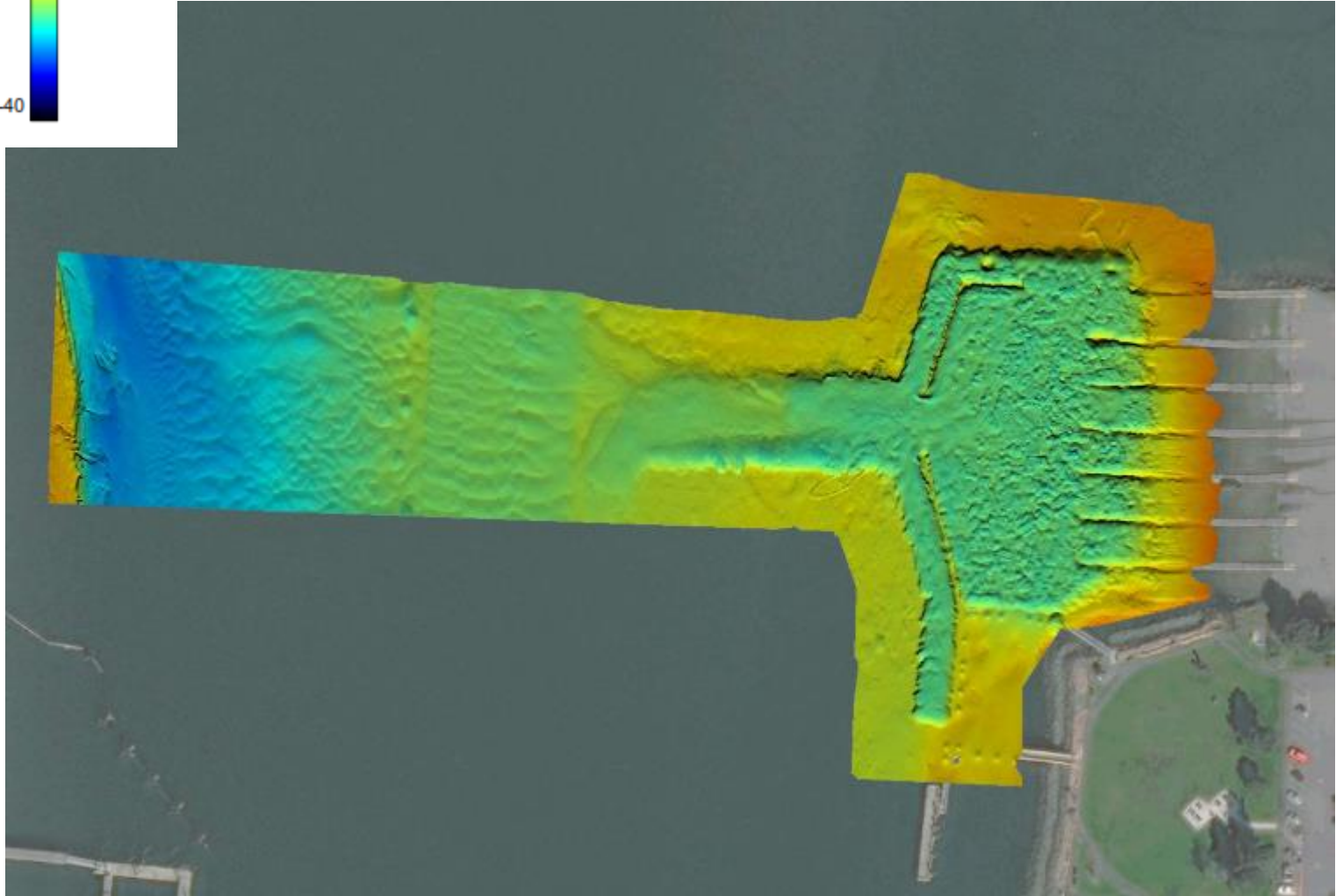
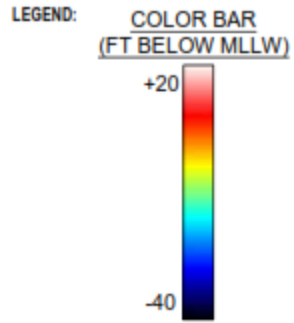
- Port obtained Boat Launch Maintenance dredging permits in 2017
- Additional sediment characterization and open water disposal authorization completed in early 2021
- Mid-2021 the Port pursued emergency authorization to also dredge a connector channel between the boat launch basin and the federal navigation channel to mitigate access impacts on emergency services from a sandbar in the river
- Commission authorized bidding of the dredging contract in August 2021 and the award in October 2021
- Commission authorized Schedule A with provisional award of Schedule B upon receipt of permits
- Two bid schedules:
 - Bid Schedule A – Boat Launch Dredge Area
 - Bid Schedule B – Emergency Connector Channel

CONSTRUCTION

- Port authorized the Connector Channel work in December 2021 after permit authorization was received.
- American Construction began work in January 2022 and completed work on February 15th, 2022
- Total volume dredged:
 - Boat Launch Area: 27,636 CY
 - Connector Channel: 5,619 CY



FINAL SURVEY



FINAL COSTS

	Original Bid	Final Amount
Original Bid (Bid Schedule A Only)	\$ 752,000.00	\$ 752,000.00
Change Orders (Addition of Bid Schedule B)	-	\$ 120,000.00
Over Runs / (Under Runs)	-	\$ (265,096.00)*
Subtotal		\$ 606,904.00
WSST	\$ 85,456.00	\$ 59,476.59
Total	\$ 957,456.00	\$ 666,380.59

* Final contract reconciliation change order amount

REQUESTED COMMISSION ACTION



NEXT 100

WE PROVIDE VALUE. WE CREATE ECONOMIC OPPORTUNITIES

THANK YOU!



@portofeverett | #portofeverett