



**SEA THE  
FUTURE  
WITH US**

# Mukilteo Public Access & Fishing Pier Project Update

John Klekotka  
Port of Everett  
May 11, 2021



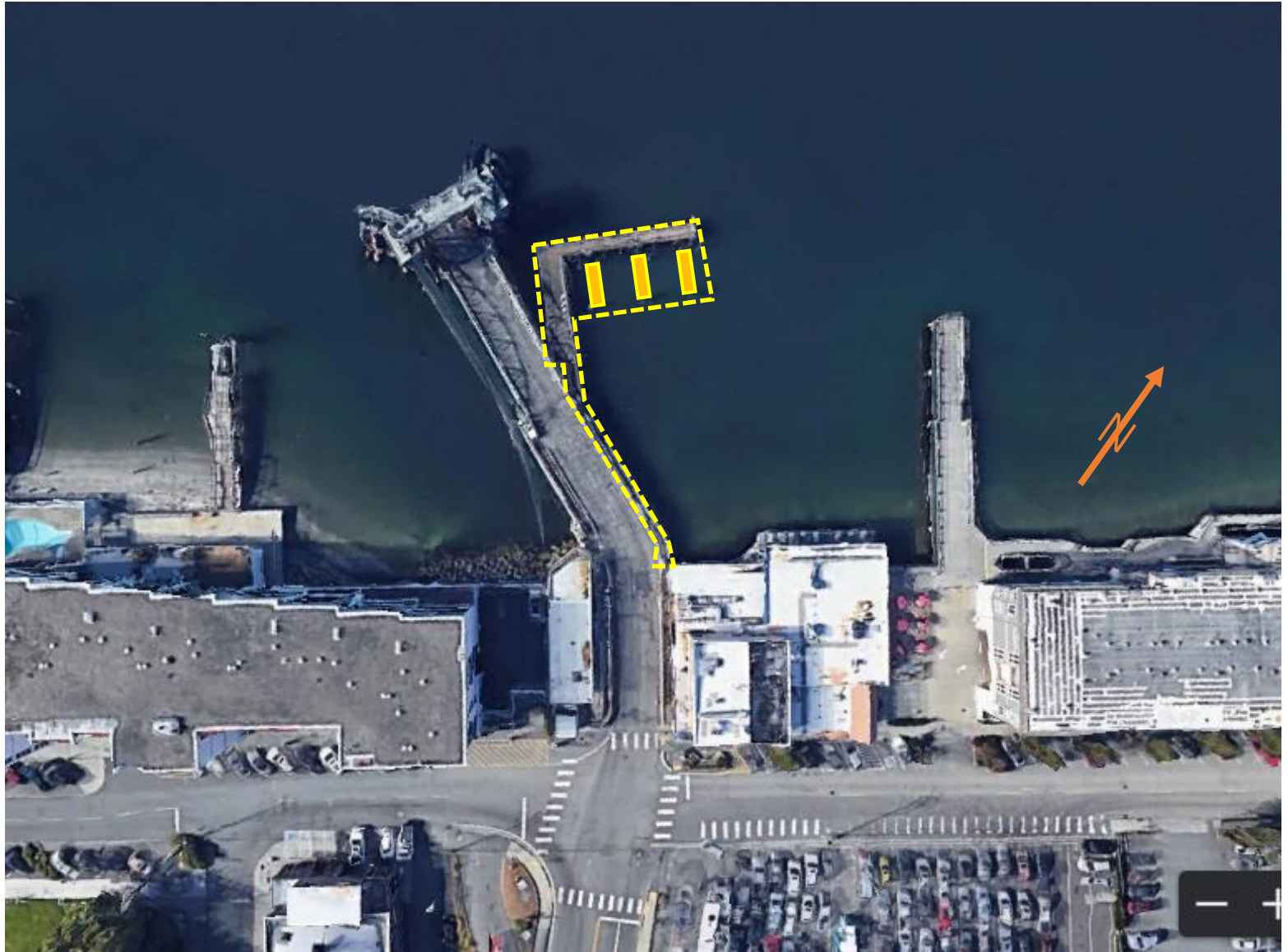
@portofeverett | #portofeverett



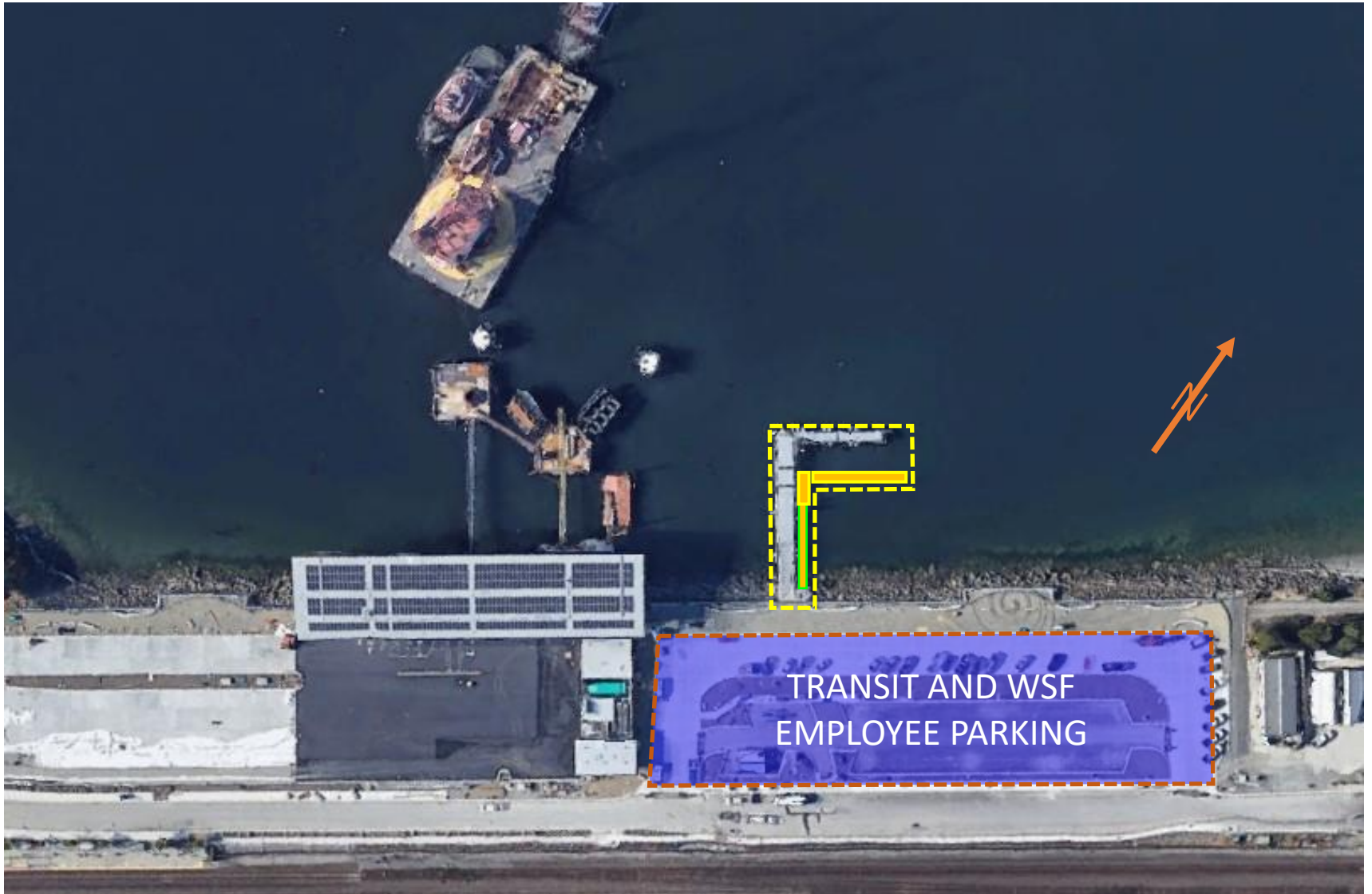
# BACKGROUND

- Port owns the “street end” for SR 525 which was the ferry loading slip for the old Terminal
- Adjacent to the ferry slip, the Port had constructed and maintained a public fishing dock
- As part of the permitting for the new Mukilteo Terminal, WSF needed to remove all of the old in-water structures, and offered to construct a new Public Pier adjacent to the new Terminal, in essentially the same configuration

# FORMER TERMINAL SITE



# NEW TERMINAL SITE





# PHOTOS

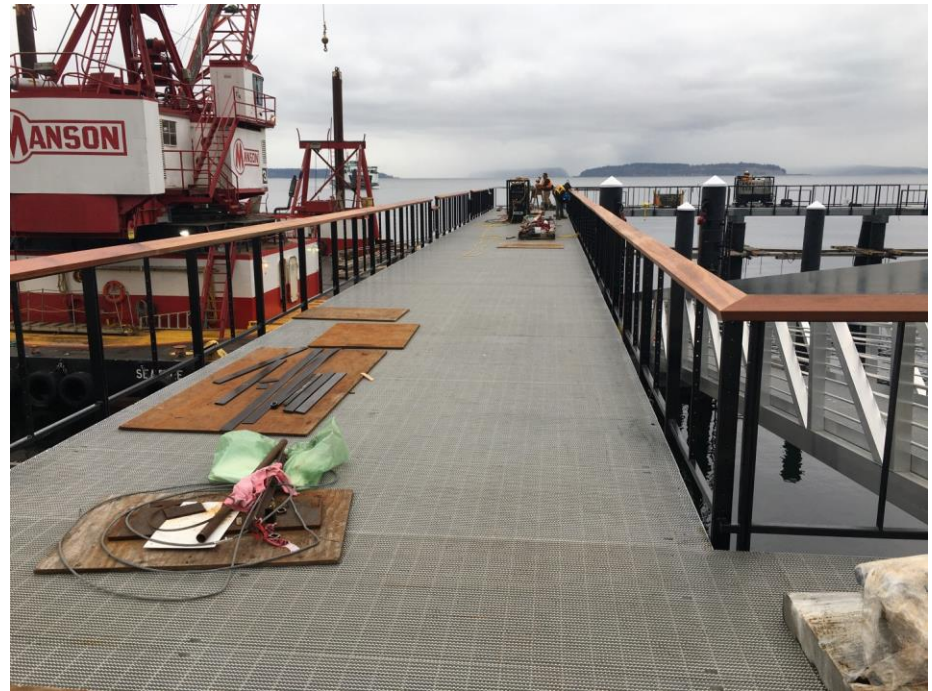


# PHOTOS





# PHOTOS





# NEXT 100

WE PROVIDE VALUE: WE CREATE ECONOMIC OPPORTUNITIES

## THANK YOU!

---



@portofeverett | #portofeverett