



**SEA THE  
FUTURE  
WITH US**

## **Maritime Industrial Expansion / Norton Terminal Authorization to Bid Early Action Pre-Load**

John Klekotka  
Port of Everett  
March 2, 2021



@portofeverett | #portofeverett



# PROJECT SITE



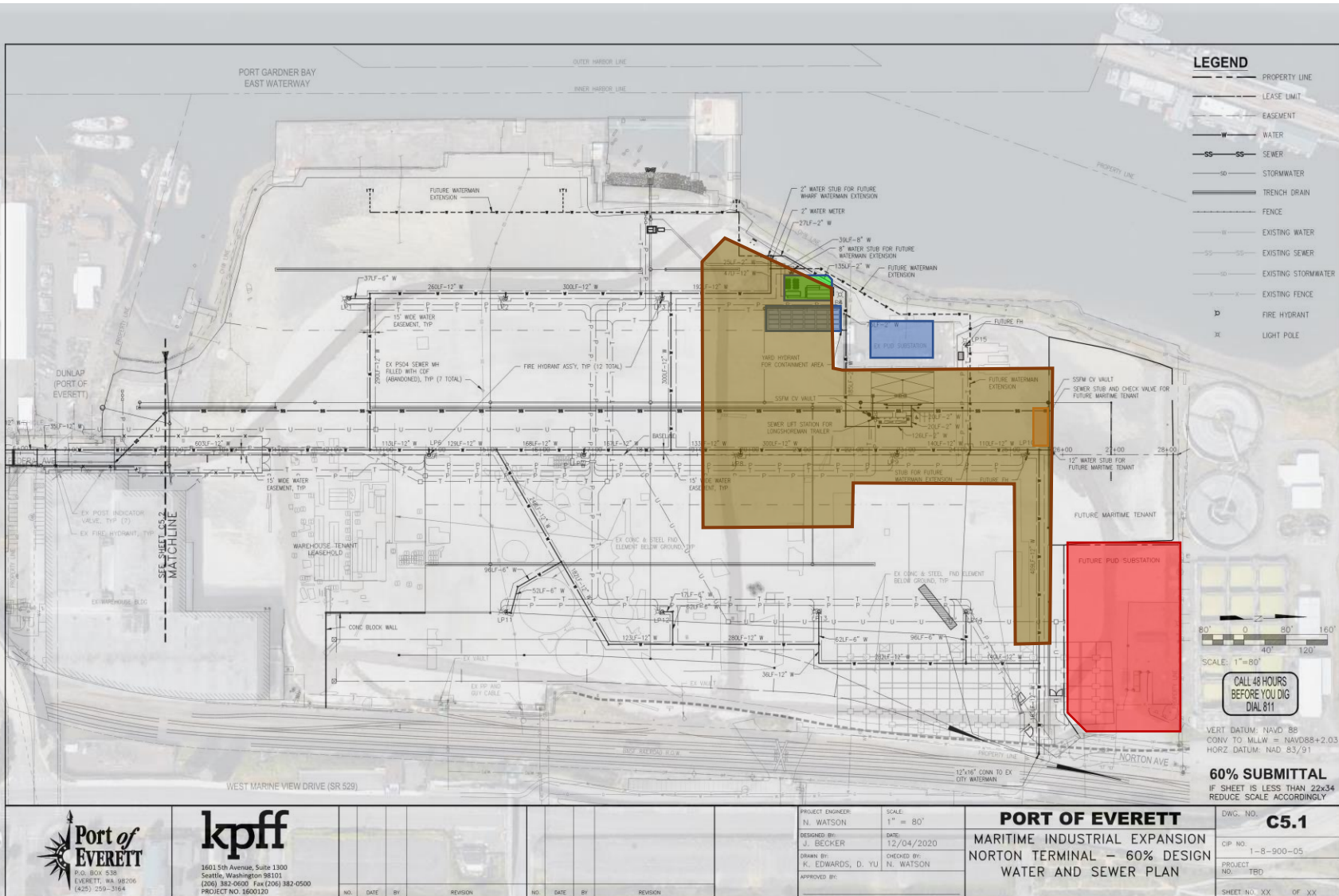
# BACKGROUND

- Woody subsurface soils are present throughout the northeast area of the Site
- Engineers are recommending “pre-loading” the area to compress the soils and eliminate future settlement
- Settlement could adversely affect our pavement cap, underground utilities, and our ability to utilize the area to its fullest extent
- Recommending utilizing crushed gravel material for preload then reusing this material on site as pavement base
- Install approximately 50,000 CY over 5 acres, approximately 6-ft high
- Tentative Award in May but not until BUILD Grant agreement in place





# PROJECT SITE WITH PRE-LOAD



# **REQUESTED COMMISSION ACTION**

Request that the Commission authorize Staff to solicit public works bids for the Early Action Pre-Load contract for the Maritime Industrial Expansion / Norton Terminal project.





# NEXT 100

WE PROVIDE VALUE: WE CREATE ECONOMIC OPPORTUNITIES

THANK YOU!

---



@portofeverett | #portofeverett