



**MILLS to
MARITIME**
RESTORING JOBS. STRENGTHENING ECONOMY.

Boat Launch Maintenance Dredge Authorization to Bid

Laura Gurley
Port of Everett Planner

August 10, 2021



@portofeverett | #portofeverett



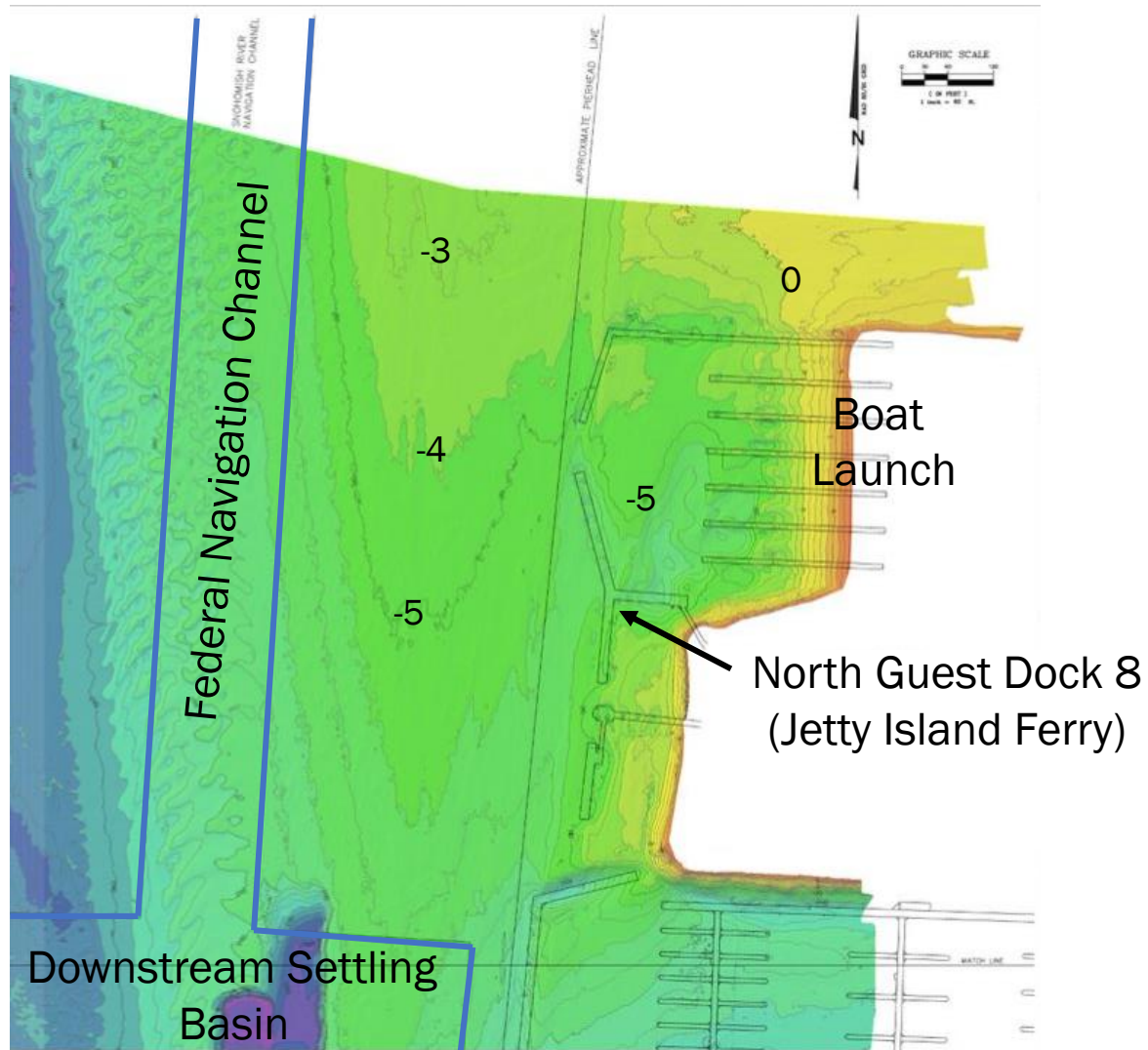
Boat Launch Maintenance Dredge



Boat Launch Issues



Boat Launch Bathymetry (2016)



Boat Launch Maintenance Dredge

CIP: 5-0-016-02

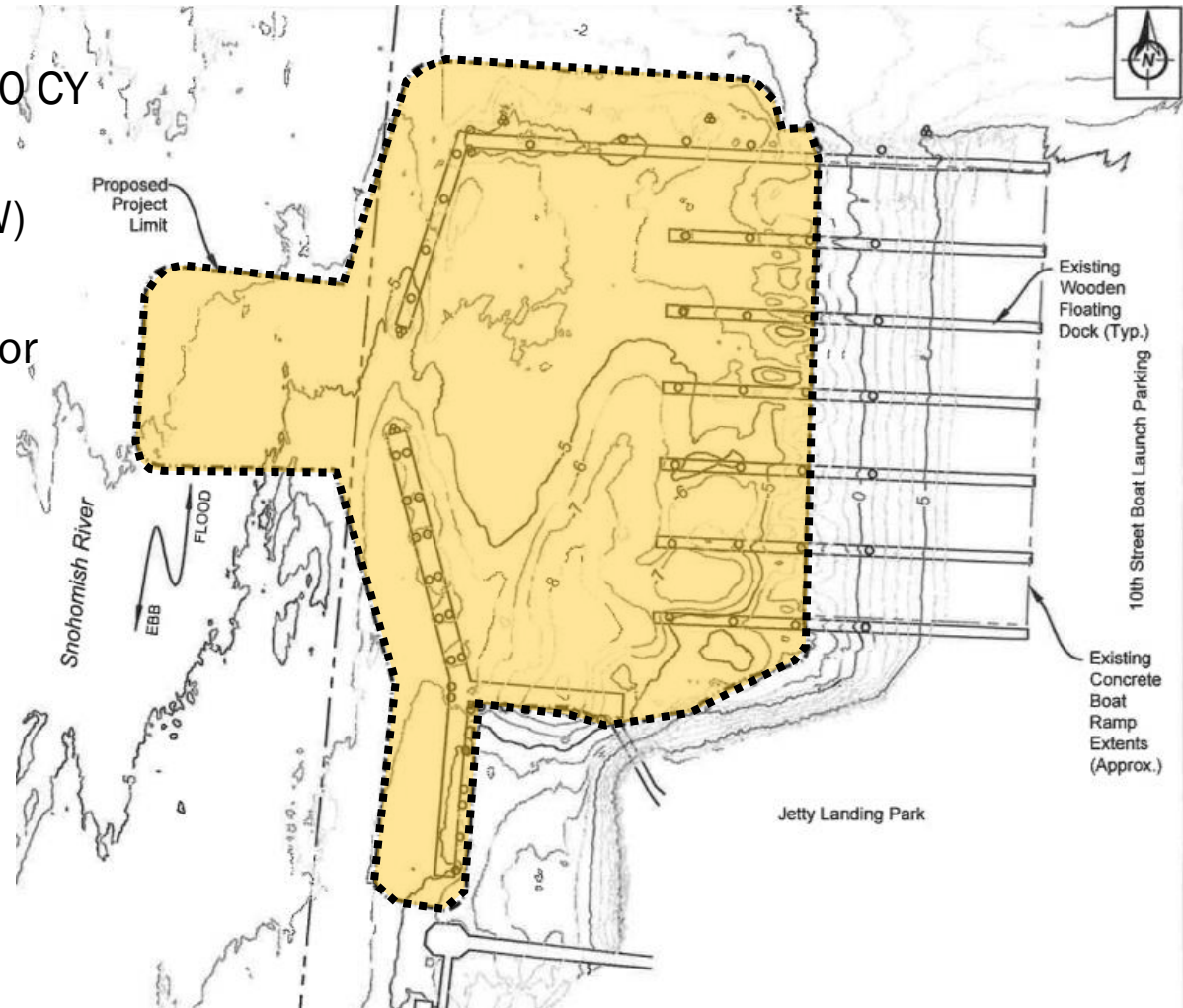
Dredge Approx. 41,000 CY

Area: 3.04 acres

Depth: to -10 ft (MLLW)

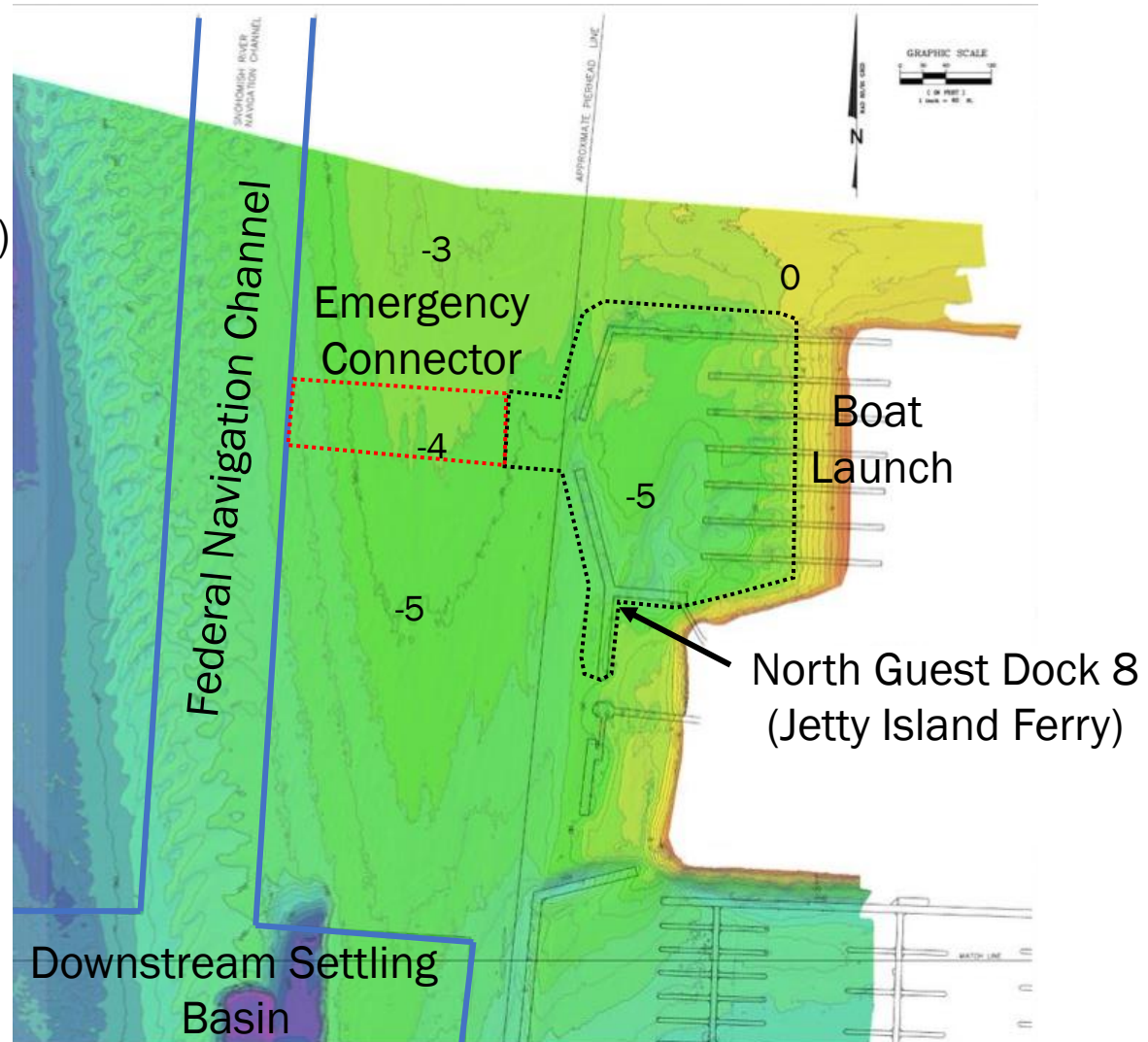
+ 2 ft overdredge

Disposal: Open water or
Jetty Island



Optional Emergency Connector

CIP: 5-0-020-01
Additional 8,000 CY
Area: 0.68 acres
Depth: to -10 ft (MLLW)
+ 2 ft overdredge
Disposal: Open water



Proposed Schedule

2021

August/September

Prepare Bid Documents

September/October

Solicit Bids

October/November

Award and Contract

December

Contractor Mobilization

2022

January/February

Dredge

Complete by February 15, 2022, close of in-water work window

Summary

	Boat Launch	Optional Emergency Connector	Totals
CIP	5-0-016-02	5-0-020-01	
Volume (cy)	41,000	8,000	49,000
Area (ac.)	3.04	0.68	3.72
Depth (ft MLLW)	-10 + 2	-10 + 2	

Action Requested

The Commission authorizes staff to solicit public works bids for the Boat Launch Maintenance Dredging project.



**MILLS to
MARITIME**
RESTORING JOBS. STRENGTHENING ECONOMY.

**Questions?
Thank you!**



@portofeverett | #portofeverett