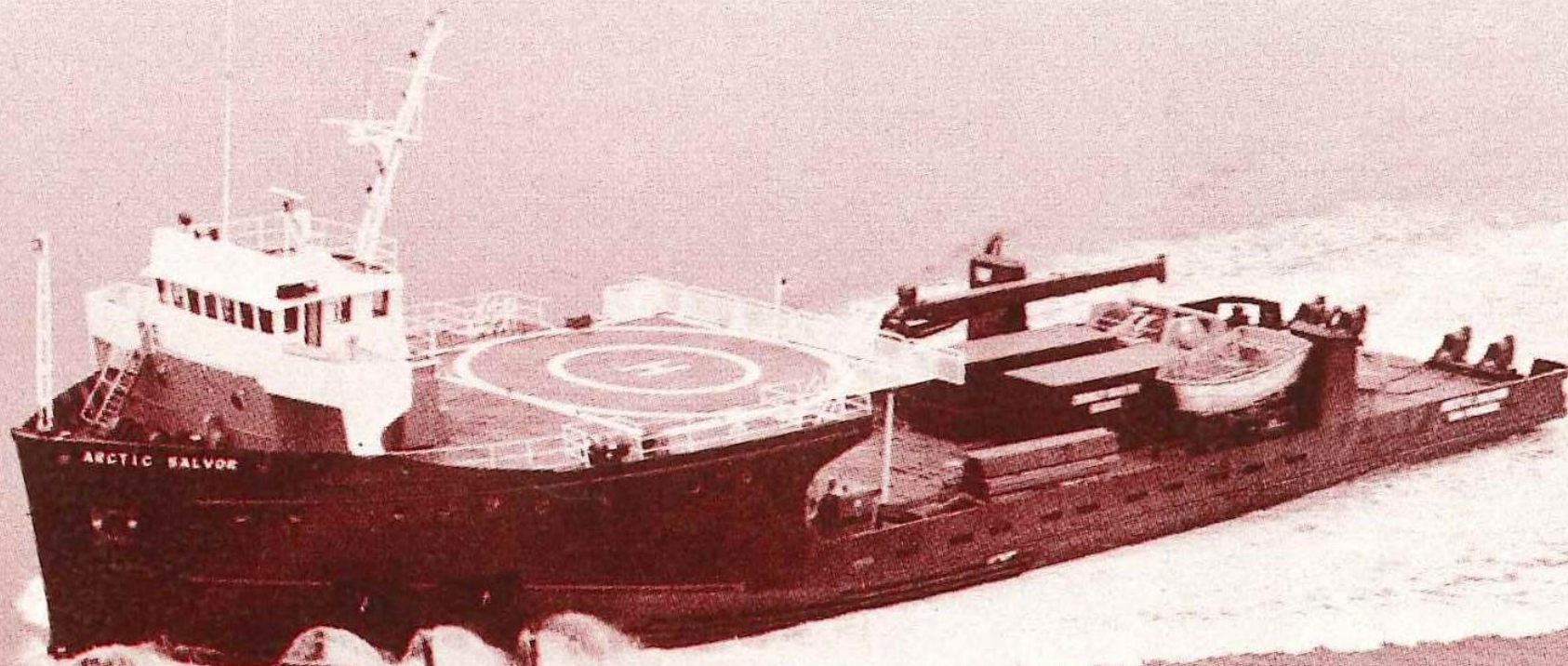


Puget Sound Pilots Overview



1977





Crowley's "Arctic Salvor" provides more line pull than any other salvage vessel in the world.

1980



1990



1990



1990



PUGET SOUND PILOTS

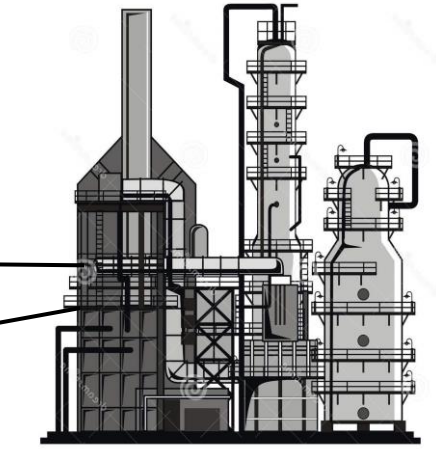
Protecting Puget Sound Since 1935



and now...

Area of Operation

San Juan Islands



Oil Refineries



Cruise Ship

Containers



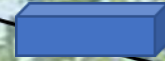
Grain

Port Townsend

Seattle, WA

Tacoma

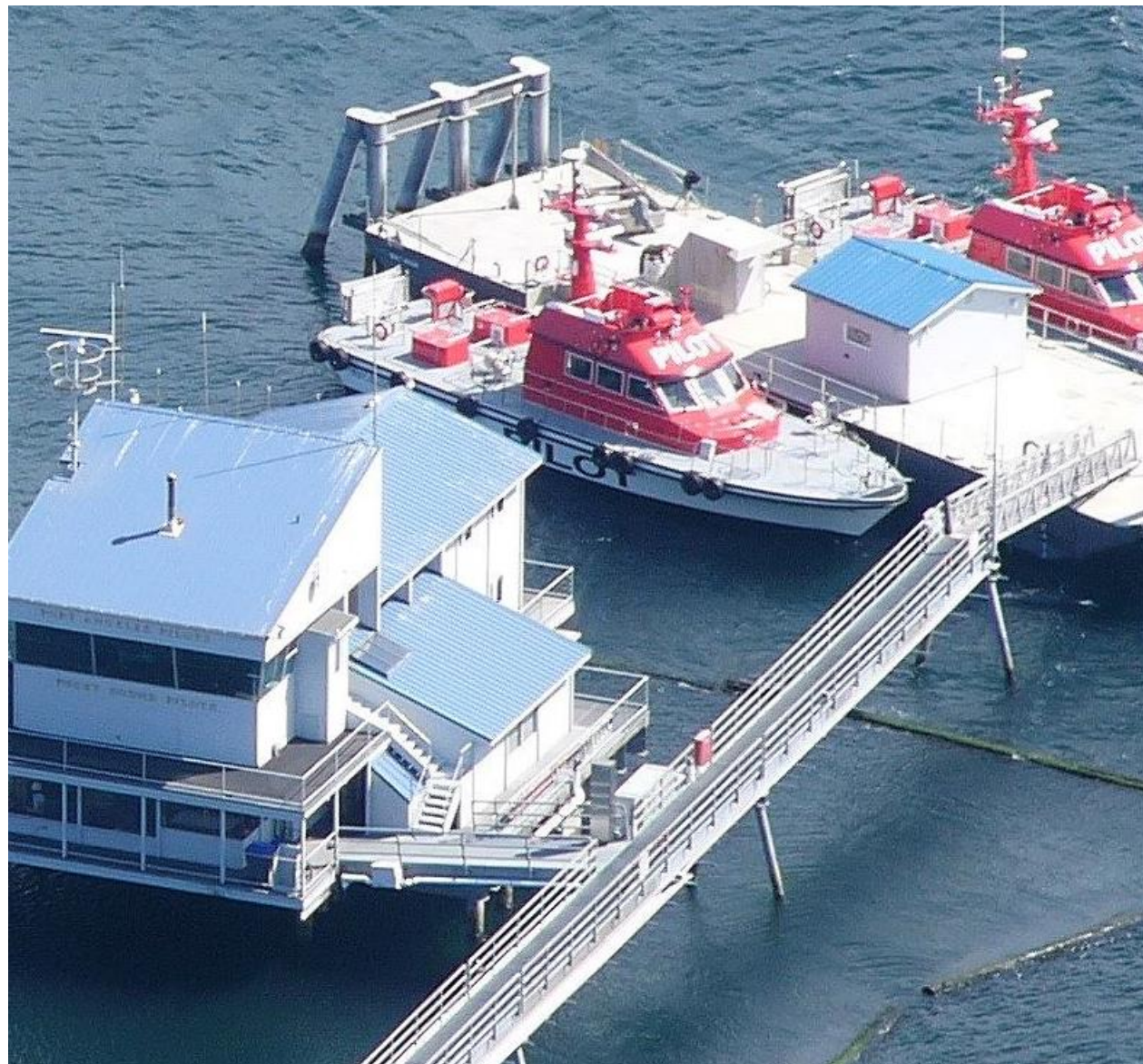
Olympia



Auto Imports

Port Angeles
Station











Climbing the Ladder









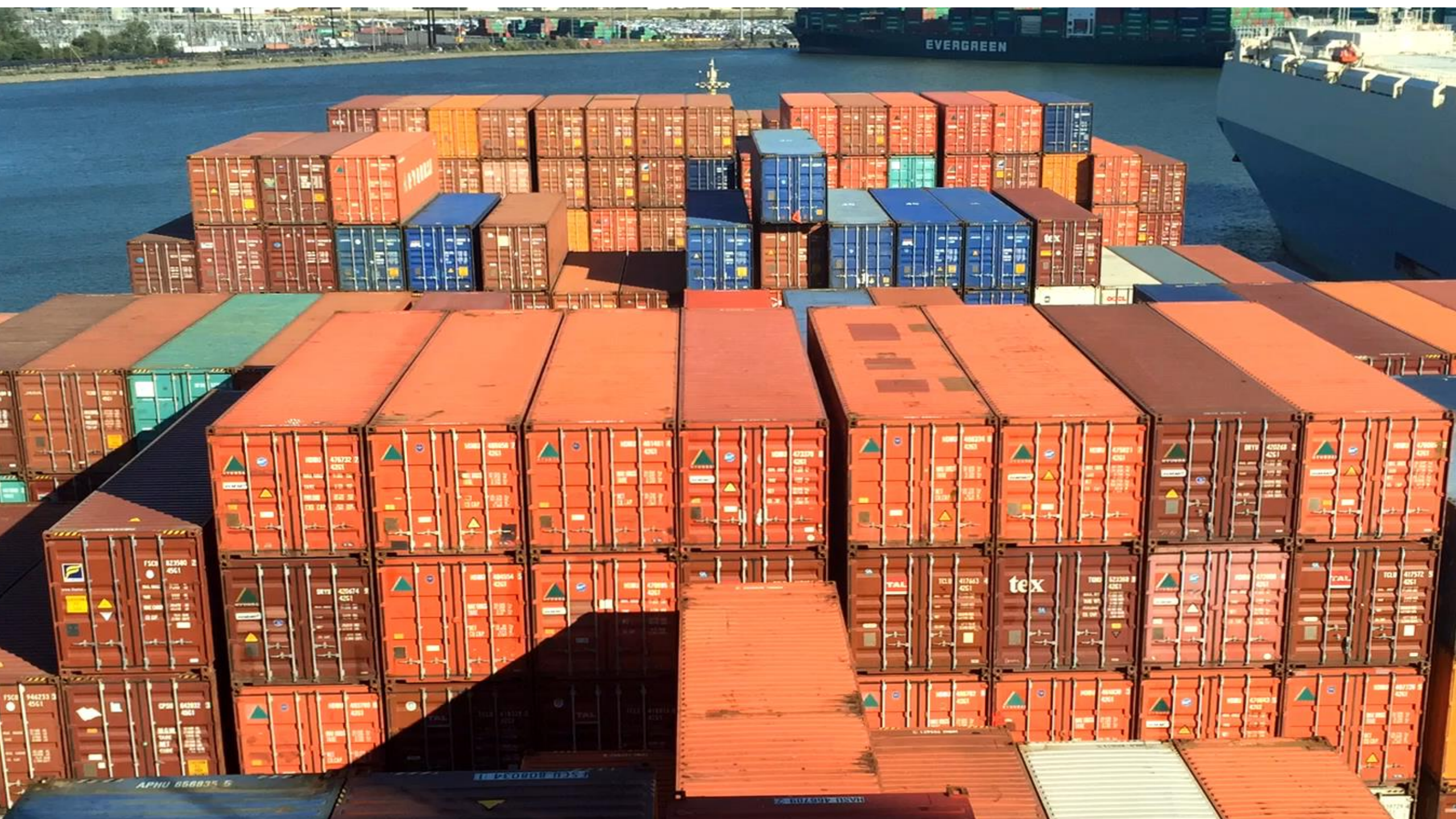












View from the wheelhouse!



CMA CGM BENJAMIN FRANKLIN

1300 FEET LONG

















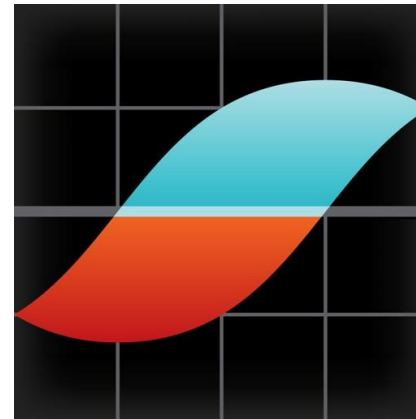
Ship Locating and Tide/WX Apps



Marine Traffic



Ship Finder



Aye Tides



StationWX

Rule 10 - Traffic Separation Schemes

- (d)(i) A vessel shall not use an inshore traffic zone when she can safely use the appropriate traffic lane within the adjacent traffic separation scheme. However, vessels of less than 20 meters in length, [sailing vessels](#) and vessels engaged in fishing may use the inshore traffic zone.
 - (ii) Notwithstanding Rule 10(d)(i), a vessel may use an inshore traffic zone when en route to or from a port, offshore installation or structure, pilot station or any other place situated within the inshore traffic zone, or to avoid immediate danger.
- (e) A vessel, other than a crossing vessel or a vessel joining or leaving a lane shall not normally enter a separation zone or cross a separation line except:
 - (i) in cases of emergency to avoid immediate danger;
 - (ii) to engage in fishing within a separation zone.
- (f) A vessel navigating in areas near the terminations of traffic separation schemes shall do so with particular caution.
- (g) A vessel shall so far as practicable avoid anchoring in a traffic separation scheme or in areas near its terminations.
- (h) A vessel not using a traffic separating scheme shall avoid it by as wide a margin as is practicable.

(USCG Seattle Traffic) North of Bush Pt. VHF 05a South VHF 14

- Pilots always on VHF channel 13!
- 7,350 assignments
- 361,000 highway miles to and from assignments travelled
- 29,554 hours in ground transportation to and from assignments
- Repositioning for board on arrival 115,412 miles
- **Smart phone Apps**
- **Marine Traffic**
- **Ship Finder**

Thank you for listening!