



**MILLS to
MARITIME**
RESTORING JOBS. STRENGTHENING ECONOMY.

Commission Retreat Seaport Report

Carl Wollebek

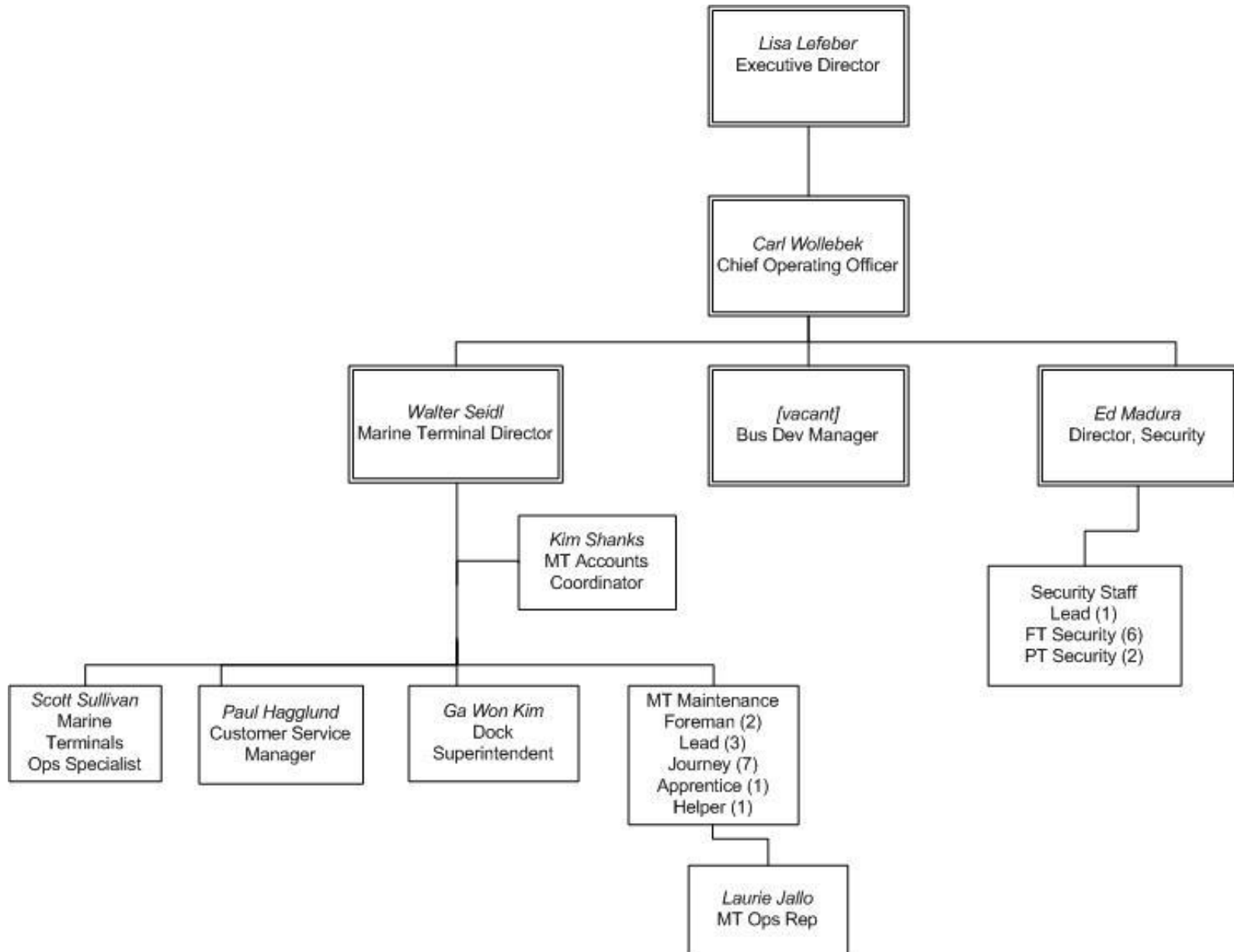
Chief Operating Officer

April 12, 2021



@portofeverett | #portofeverett

Organizational Chart



Seaport Lines of Business

General Cargo

Aerospace, Project
Cargo, Forest Products,
Energy, Steel,
Agriculture

Cement

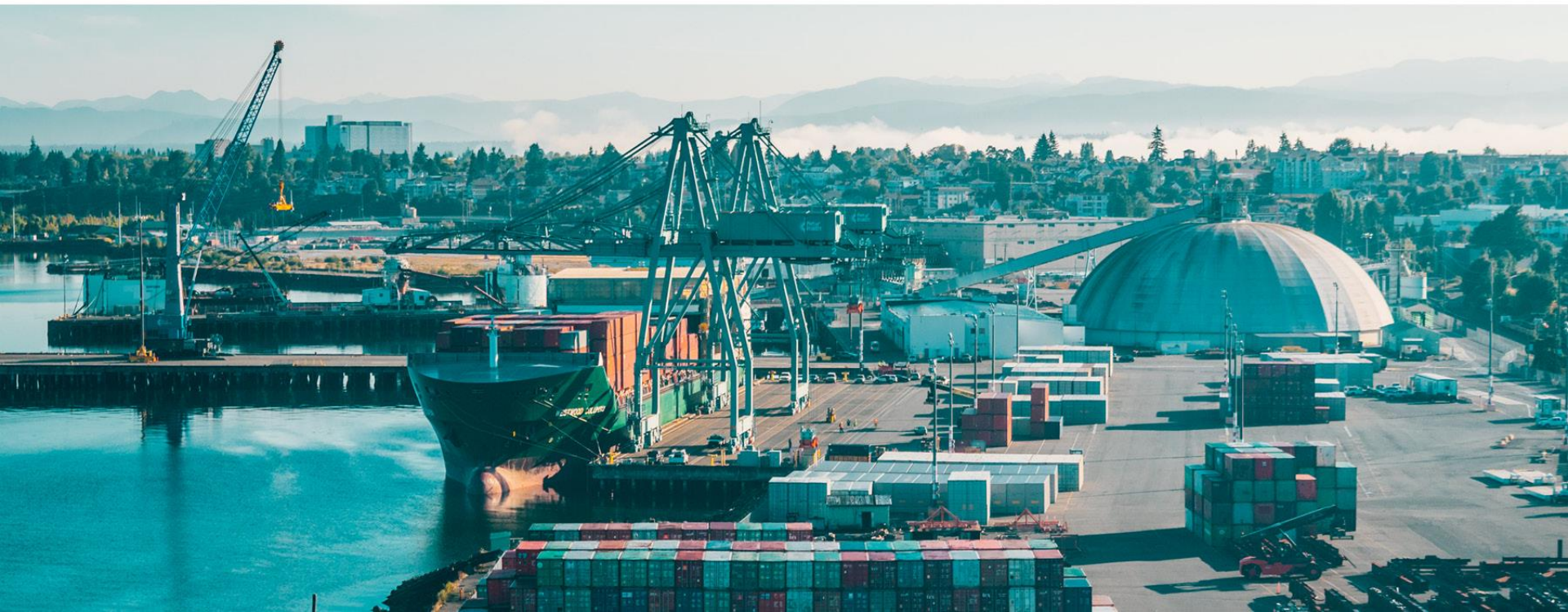
Lehigh

Marine Industrial

Everett Ship Repair,
vessel maintenance,
layberth, non cargo
related opportunities

Seaport Operating Strategy

- Operating Port
- Agent for The Boeing Company
 - SSA/Brusco



Seaport Marketing Strategy

Customers

Boeing, Westwood, Lehigh, Everett Ship Repair, Eastern Car Liner, Kinross, Weatherford, Shipowners, Engineering , Forwarders

Industry Partners

Jones/SSA, Truckers, BNSF Railroad

Targets

Agriculture, Seafood, Wind Energy, Project, Mining, Containers



Seaport Marketing Snapshot




Port of Everett Seaport: Ready to Serve the Fishing Fleet
Unlabeled


Port of Everett: Ready to Serve the Fishing Fleet



Port of Everett Seaport: Pulp Logistics 2020

Port of Everett: Pulp Logistics 2020





Let us handle the BULK of your work!
The Port of Everett Seaport, located just 25 miles north of Seattle in Washington state, offers several bulk loading benefits.

Rail > Container > Ship

Our facilities are prepared to support your rail-to-ship bulk needs. One option offered is to rail hopper cars to the Port, transfer from hopper cars to shipping containers and export via scheduled service to Asia or the South Pacific. Another option is to rail hopper cars to the Port, transfer the product to storage containers and use a revolving spreader to load product onto a bulk vessel in bulk format.

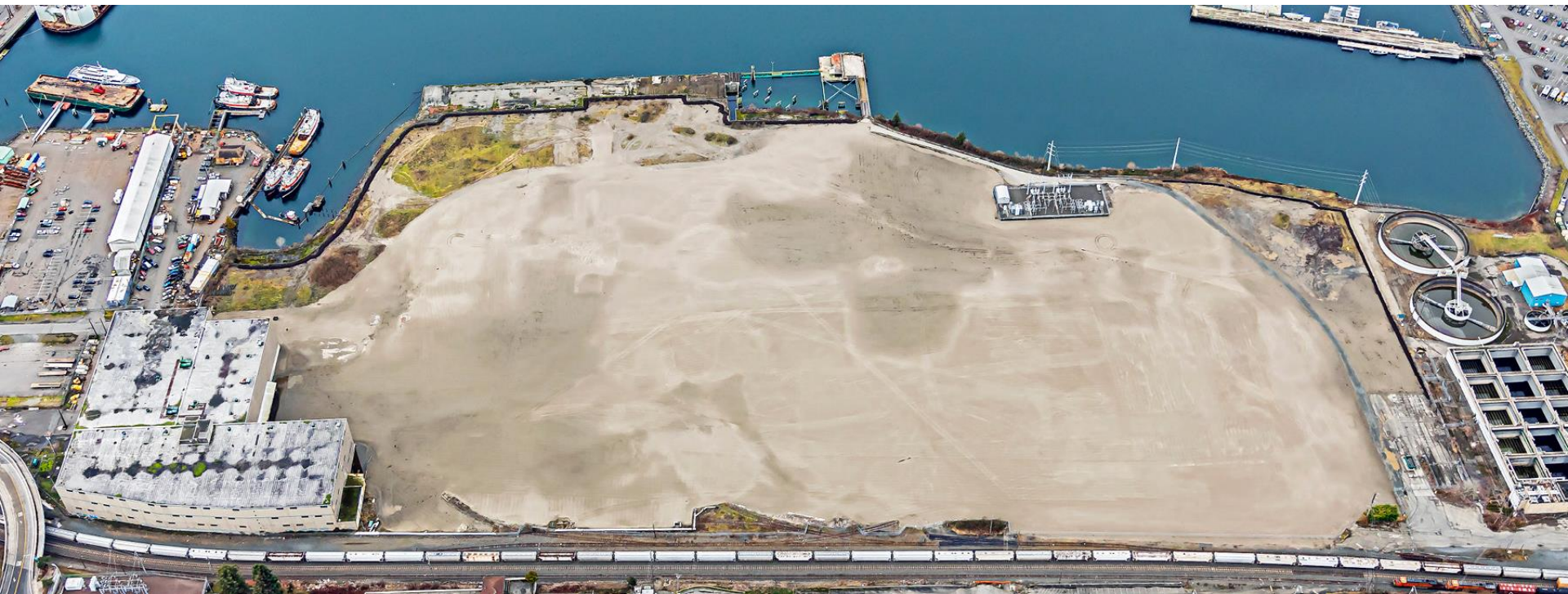
[Learn More](#)

Why Choose the Port of Everett?

Seaport Agriculture Email Blast

Seaport Norton Terminal

- Assessing Equipment and Labor requirements
- Customs and Border Protection
- Assist Engineering and Planning in design
- Actively marketing



Questions/Comments?

