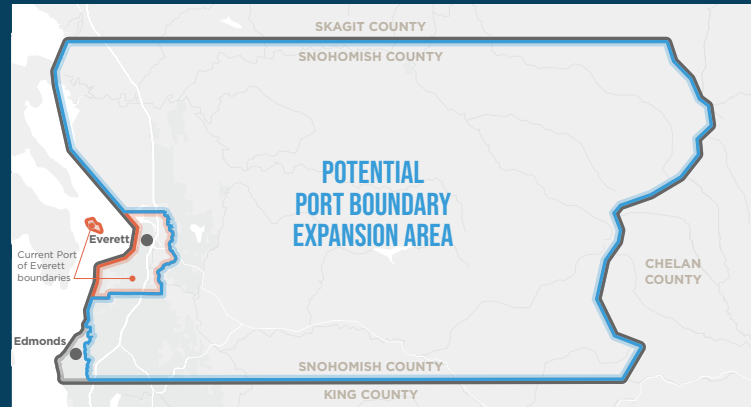




BOUNDARY ENLARGEMENT BALLOT MEASURE

VOTERS TO CONSIDER OPENING UP ACCESS TO PORT RESOURCES, INVESTMENT OPPORTUNITY TO MOST OF SNOHOMISH COUNTY

In a historic action on Dec. 19, 2023, the Port of Everett Commission unanimously passed Resolution No. 1220, directing Port staff to submit a proposition to enlarge the limits of the existing Port District to the Snohomish County Council for voter consideration — a first since the citizens voted to create the Port more than a century ago. On March 12, 2024, the motion was unanimously passed by the County Council, officially moving the measure to the ballot. The measure, slated for the August 2024 primary, will consider enlarging the Port District to include most of Snohomish County excluding Port of Edmonds, City of Edmonds, Town of Woodway, Point Wells, and Esperance (see map).



Above: A map showing current Port District boundaries in orange and the proposed enlargement area in blue; the ballot measure will consider enlarging the Port District to include most of Snohomish County. The district would not include Port of Edmonds, City of Edmonds, Town of Woodway, Point Wells and Esperance.

WHY NOW?

As an economic driver and job creator in the region, the Port of Everett is always looking at how it can use the tools and resources unique to ports to create new opportunity and add value to the communities it serves. The caveat? Ports are limited in their ability to operate or invest in projects outside their district boundary lines.

While many large port districts in Washington state are county-wide — including all other ports in the state that operate international seaports — the Port of Everett is not. Currently, Port boundaries cover most of Everett, portions of Mukilteo, and small parts of Marysville and unincorporated Snohomish County — a total of about 110,000 residents. To put this into perspective, with nearly 830,000 residents and growing, only about 15% of the County has access to port tools and investments. This significantly restricts how the Port of Everett can help advance economic and community priorities across Snohomish County, which is one of the fastest growing counties in the state.

WHAT'S IN IT FOR ME? FUNDING TO INVEST IN...



LOCAL JOBS



RECREATION



ENVIRONMENTAL
ENHANCEMENTS



TRANSPORTATION
IMPROVEMENTS



PEOPLE | OPPORTUNITY | RECREATION | TRANSPORTATION | SUSTAINABILITY

LEARN MORE AND VIEW FAQs AT
[PORTOFEVERETT.COM/BOUNDARIES](https://portofeverett.com/boundaries)



IF IT PASSES, WHAT'S NEXT?

If the voters approve the measure by a simple majority (50.01% or more), the following steps would take place:



REDISTRICTING

Shortly after the August 2024 boundary enlargement vote, the Port would redraw its three districts, ensuring that each resident in the newly enlarged Port District is encompassed in one of the Port's districts.



GOVERNANCE STRUCTURE

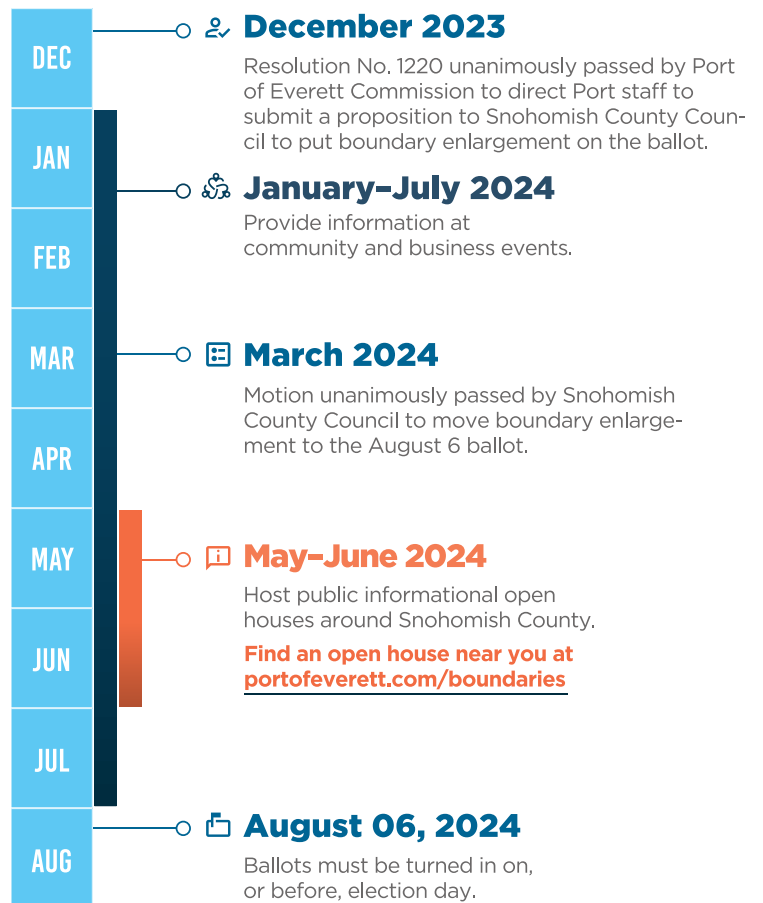
Per RCW 53.12.120, at a subsequent election the voters would determine whether to increase the number of Port Commissioners from three to five to govern the expanded Port District.



STRATEGIC PLAN

The Port would also reopen its Strategic Plan — a guiding document of strategic priorities and future investments — to ensure the economic and community needs of the enlarged area and feedback of constituents is considered in the Port's vision and capital investment plan moving forward.

KEY MILESTONES & NEXT STEPS



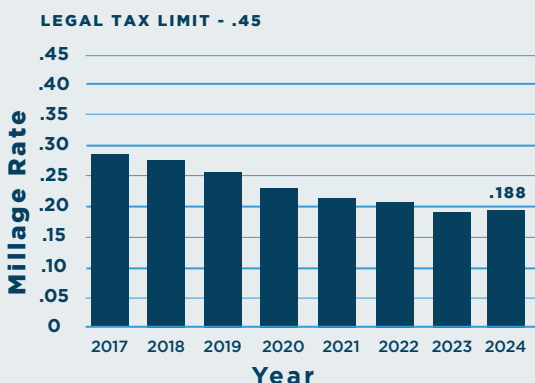
PORT TAXES & COMMUNITY REINVESTMENT

As special purpose districts, ports collect a property tax. Ports are one of the lowest taxing entities in the County. In 2024, the Port of Everett collects 18.8 cents per \$1,000 — or about \$100/year on a \$500,000 property value (see chart to the right). NOTE: Port taxes are not collected on tribal trust lands.

Port of Everett operations, including all staff salaries and benefits, are self-funded. All public investment collected via property tax is ONLY reinvested back into the Port District community to fund capital projects, public access and environmental cleanups.

2024 PORT OF EVERETT PROPERTY TAX	
Assessed Value	Current District
\$550,000	\$103.40
\$700,000	\$131.60
\$850,000	\$159.80

Tax Rate Trends



Snohomish County Distribution of Taxes 2023

